

Orange Drive, Oakes Road, and the New River Greenway. The design emphasized connectivity, safety, and accessibility, aligning with FDOT and local Complete Streets goals for sustainable corridor redevelopment.



SR 7 / NW 7th Ave Safety Improvements | Florida Department of Transportation (FDOT) District 6

HBC Engineering Company provided design and post-design support for FDOT District 6 along a one-mile segment of SR-7/NW 7th Avenue from south of NW 118th Street to NW 131st Street. The project enhanced safety and visibility through Signing and Pavement Marking, roadway lighting, and signalization upgrades coordinated with Miami-Dade County Parks. HBC prepared

complete construction plans, including lighting calculations, mast-arm layouts, and power coordination. Post-design tasks covered RFI responses, shop drawing reviews, and field verification to ensure construction compliance. All work followed FDOT standards under professional engineering supervision, improving operational efficiency and multimodal safety along this major urban corridor.



SR 7 / NW 7th Ave Safety Improvements | Florida Department of Transportation (FDOT) District 6

As prime consultant to Miami-Dade County Parks and Recreation, HBC provided roadway design and construction documents for the reconstruction and widening of SW 147th Avenue from SW 17th Street to SW 26th Street. The project expanded the corridor from one to two lanes per direction, including milling, resurfacing, ADA ramp upgrades, drainage

design, sidewalk construction, and new pavement markings. HBC optimized roadway geometry to preserve a hardwood tree island while minimizing environmental impacts. The design required coordination with DERM, SFWMD, USACE, FDEP, and WASD, meeting all federal, state, and county standards under the leadership of Project Manager Adebayo Coker, PE.



Corridor Improvements at SR-817/University Drive from Nova Drive to SR-84 | Florida Department of Transportation (FDOT) District 4

This project improves traffic operations and safety along SR-817/University Drive from Nova Drive to SR-84. The scope includes widening the existing pavement to add an auxiliary lane from NW 23rd Street to the westbound I-595 ramp, easing congestion and improving traffic flow. HBC's design includes drainage structure relocation, mast arm and utility pole adjustments,

and updated signing to meet FDOT standards. The project also reconfigures a bus stop bay at Nova Drive for improved transit access and modifies right-turn lanes serving the Royal Grand community and nearby businesses to enhance mobility, accessibility, and overall corridor efficiency.



Widening of SW 30th Avenue from Griffin Road to SW 45th Street | Florida Department of Transportation (FDOT) District 4

HBC provided design services for the widening of SW 30th Avenue from two to four lanes between Griffin Road and SW 45th Street, including new signing and pavement markings north to SW 42nd Street. The project enhanced safety, capacity, and multimodal access through new bike lanes, ADA-compliant sidewalks, upgraded lighting, and improved drainage

infrastructure. HBC's scope encompassed roadway design, geotechnical coordination, environmental permitting, utility adjustments, and structural, signalization, and lighting plans. The team also prepared 60%, 90%, and 100% submittals, ensuring full compliance with FDOT and Broward County standards.



Lighting Design for SR-820/Pines Boulevard from West of SW 136th Avenue to East of NW 118th Avenue | Florida Department of Transportation (FDOT) District 4

HBC is providing Lighting Design and Post-Design Services for SR-820/Pines Boulevard from west of SW 136th Avenue to east of NW 118th Avenue. The project enhances roadway and pedestrian safety through innovative, FDOT-compliant lighting solutions. Scope elements include lighting analysis, plan sheet preparation, and photometric design to meet required illumination levels. Improvements feature pedestrian-scale lighting along a new 10-foot sidewalk and upgraded intersection lighting at NW 142nd, NW 136th, SW 129th, Flamingo Road, and NW 118th Avenue. HBC's deliverables include design reports, load center layouts, voltage drop calculations, and full digital documentation coordinated with utility providers.



Design-Build Services for The Underline - Phase II | Miami-Dade County Department of Transportation and Public Works

HBC serves as Project Manager for Phase II of The Underline, a 2.4-mile multimodal corridor extending from SW 13th Street to SW 19th Avenue beneath Miami's Metrorail. The project transforms underutilized land into a safe, sustainable urban trail with pedestrian and bicycle pathways, enhanced lighting, landscaping, and public amenities. HBC's scope includes civil, landscape, electrical, and geotechnical design, permitting, surveying, and public involvement. The firm oversees environmental and archaeological compliance, stakeholder coordination, and design integration. This phase supports Miami-Dade County's Parks and Open Space Master Plan, promoting connectivity, cultural activation, and community engagement through innovative urban design.



CEI Services for Belvedere Heights Phase 1 & 2 Sidewalks and Streetlight | Palm Beach County

HBC provided Construction Engineering and Inspection (CEI) services for a comprehensive infrastructure improvement project involving sidewalks, drainage, and lighting installations. Responsibilities included daily inspection, documentation, quality assurance, and coordination among contractors, subcontractors, and utility agencies. The scope covered 6-foot-wide sidewalk reconstruction, driveway restoration, drainage structure installation, streetlight foundations, and electrical work including conduits and pull boxes. HBC oversaw directional boring, site restoration, and MOT implementation to ensure safety and minimize disruption. Coordination with Verizon, FPL, Florida Public Utilities, and county water utilities ensured conflict-free construction. HBC's field oversight maintained quality, schedule adherence, and regulatory compliance throughout delivery.



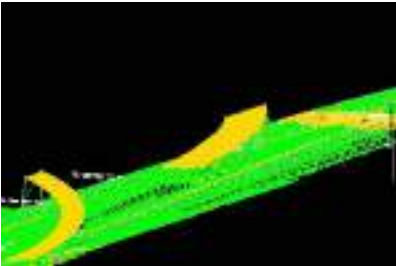
CEI Services for Roadway, Sidewalk, & Pedestrian Lighting Improvements Project at Cherry Road from Military Trail to Quail Drive | Palm Beach County

HBC provides Construction Engineering and Inspection (CEI) services for Palm Beach County's Cherry Road Complete Streets improvements under a task work order contract. The project constructs new 8-foot and 6-foot sidewalks along both sides of Cherry Road between N. Military Trail and Quail Road, with additional roadway widening, milling, resurfacing, and updated signing and pavement markings. Enhancements include pedestrian lighting and landscaping. HBC's CEI team manages inspections, documentation, progress meetings, and contractor coordination, ensuring compliance with FDOT and county standards. Responsibilities also include funding documentation, reimbursement package.



3D-Design Survey for SR-9 / I-95 from South of Linton Road to 6th Ave South | Florida Department of Transportation (FDOT) District 4

Under FDOT District 4's continuing services contract, GPI GEO served as Prime Geomatics Consultant for a 12-mile PD&E project along SR-9/I-95. The firm completed a full right-of-way 3D Design Survey using Terrestrial Mobile LiDAR to support roadway, drainage, and utility design. Scope included establishing Primary Control Points, setting LiDAR targets, calibrating point clouds, and extracting above-ground features across pavement and adjacent areas. GPI GEO integrated ground and drainage surveys and recovered the historical baseline of survey for both the I-95 and FEC corridors. The survey delivered high-accuracy data supporting FDOT's design, modeling, and planning objectives.



3D-Design Survey for SR 826 / Palmetto Expressway from NW 25th Street to NW 67th Avenue | Florida Department of Transportation (FDOT) District 6

GPI GEO served as Prime Geomatics Consultant for FDOT District 6, providing a comprehensive 3D survey to support the re-alignment of travel lanes following express lane construction on SR-826. Conducted under a districtwide services contract, the survey utilized Aerial LiDAR and imagery to capture high-resolution data of the Palmetto Expressway deck. FDOT furnished control points, while GPI GEO extracted all above-ground 3D features along the corridor, extending to side streets and ramps. The firm also scanned overpasses and mast arms to document vertical clearances, delivering precise digital data to support roadway design and lane configuration.



Andrews Avenue Extension - Segment 5 | Florida Department of Transportation (FDOT) District 4

This project provided design and permitting services for a new four-lane divided roadway between Racetrack Road/NW 3rd Street and Atlantic Boulevard/SR-814. Following Alignment Alternative 1-B approved in the 1996 PD&E Report, the 110-foot right-of-way section accommodates future expansion to six lanes. The design includes 12-foot lanes, four-foot bike lanes, six-foot sidewalks, and a 33-foot landscaped median. HBC developed construction documents for a closed drainage system with wet detention ponds discharging to the Pompano Canal (C-14), along with lighting, signalized intersections, and signing and marking. Coordination with Broward County and the City of Pompano Beach ensured maintenance agreements.



SR 907/Alton Road from 5th Street to N Michigan Avenue | Florida Department of Transportation (FDOT) District 6

This 1.5-mile section of Alton Road in Miami Beach was revitalized to enhance safety, aesthetics, and pedestrian comfort along a busy commercial corridor. HBC's design introduced shade trees in curbed bulb-outs and adjacent to parking areas, creating an inviting, ADA-compliant streetscape that encourages walkability and supports local businesses. The project included design and permitting for 3,370 linear feet of sidewalk with integrated drainage improvements, irrigation systems tailored to City requirements, and hardscape treatments providing root space for trees. The redesigned, tree-lined corridor softens the urban environment while improving stormwater management and delivering lasting community value.



SR A1A Fort Lauderdale Beach Streetscape | Florida Department of Transportation (FDOT) District 4

KCI provided design and post-design services for the reconstruction of SR A1A from Sunrise Boulevard to NE 18th Street under contract with FDOT District Four. The project focused on enhancing the corridor’s visual character and pedestrian experience through landscape, irrigation, and hardscape improvements. KCI’s design featured closely spaced stately

palms in landscaped medians and coastal-appropriate plantings along wide beachfront sidewalks to create an inviting, resilient streetscape. Post-design responsibilities included plant layout reviews, quality inspections, and continued monitoring during the establishment period to ensure proper growth, durability, and aesthetic consistency along this iconic coastal corridor.



Las Olas Boulevard Beach Streetscape | Florida Department of Transportation (FDOT) District 4

The City of Fort Lauderdale selected KCI to design the Las Olas Boulevard Gateway from east of the Intracoastal Waterway to SR-A1A. The project included roadway realignment, drainage upgrades, ADA improvements, signage, striping, new mast arm signal structures, and comprehensive landscape, irrigation, and lighting design. KCI incorporated decorative

palms, uplighting, and coastal plantings to enhance aesthetics and pedestrian comfort while softening views of adjacent parking areas. Additional services included tree relocation plans, bidding assistance, and construction management. The resulting streetscape blends functionality and visual appeal, creating a distinctive coastal gateway that reflects Fort Lauderdale’s vibrant character.

Avant Garde Academy “Safe Routes to School” Sidewalk Project | City of Hollywood

RES supported the City of Hollywood under the FDOT Local Agency Program by conducting a NEPA evaluation for sidewalk improvements serving Avant Garde Academy. The project addressed 13,225 linear feet of missing sidewalks across 26 blocks within 0.71 miles of the school to enhance pedestrian safety and accessibility. RES assessed sociocultural, contamination, and natural resource impacts, including a Florida bonneted bat survey as part of the environmental review. Deliverables included a Categorical Exclusion (CatEx 2) document with supporting resource memos, ensuring federal compliance and facilitating the City’s pursuit of Safe Routes to School funding.



Jose Marti Park Adaptive Re-Design | Curtis + Rogers Design Studio

RES is providing civil and environmental engineering services for the adaptive redesign of Jose Marti Park, a 13-acre waterfront site on the Miami River in Downtown Miami. The project addresses tidal flooding, stormwater management, and sea-level rise through green infrastructure, living shorelines, and low-impact development (LID) features. RES is leading stormwater design, environmental permitting, and resiliency planning,

including tidal valves, bioretention systems, and smart stormwater infrastructure. The project integrates public education, ecological restoration, and art-based stormwater features, supported by the City of Miami Forever Bond and a \$18 million CDBG grant, establishing a model for resilient urban waterfronts.



Miami River Greenway Curtis Park | A&P Consulting Transportation Engineers, a CHA Company

RES is providing environmental services for the City of Miami's greenway project along NW North River Drive under FDOT District Six's LAP program. Partnering with A&P Consulting Transportation Engineers, RES supports NEPA compliance, permitting, and environmental documentation for federally funded improvements that include roadway reconstruction, resurfacing, sidewalk upgrades, and a new multi-use path connecting to the Miami Riverwalk. Services include contamination screenings, bat surveys, Section 4(f) coordination, public involvement, and Class VI DERM and SFWMD permit support. The project enhances pedestrian and bicycle safety while extending the Miami River Greenway, promoting connectivity and multimodal access.



Lyons Road from Atlantic to South of Flavor Pict Road | PBC Roadway Production/ Scalar Consulting Group

PACIFICA provided geotechnical engineering services for the widening and reconstruction of Lyons Road, a 1.5-mile corridor from W. Atlantic Avenue to south of Flavor Pict Road. The project expanded the existing two-lane roadway into a four-lane divided highway, including bridge replacement and widening. PACIFICA's scope included subsurface exploration, exfiltration testing, laboratory analysis, and geotechnical evaluations addressing soil conditions, compaction, and muck delineation. The final report provided recommendations for site preparation, foundation design, and pile capacity for driven, drilled shaft, and augercast piles. Services also included construction monitoring guidance to ensure structural stability and long-term roadway performance.



Australian Avenue, Banyan Boulevard to 45th Street | PBC Roadway Production/ HSQ Group Inc.

PACIFICA performed geotechnical engineering services for the Australian Avenue Reconstruction and Drainage Improvements project, covering approximately three miles from Banyan Boulevard to 45th Street and including two bridge widenings. The firm's scope comprised subsurface investigations, laboratory testing, and geotechnical analysis to support roadway and bridge design. PACIFICA provided recommendations for soil compaction, site preparation, and muck delineation to address unsuitable materials. The geotechnical report also evaluated axial capacities for driven concrete piles, drilled shafts, and augercast piles, along with construction considerations and structural monitoring guidelines to ensure foundation integrity, safety, and long-term performance throughout the reconstructed corridor.

City of Lake Worth Beach ADA Improvements Local Agency Program (LAP) Project | WGI, Inc.

Janus Research provided cultural resources services for the City of Lake Worth Beach LAP project in compliance with Section 106 of the National Historic Preservation Act and the FDOT Section 106 Programmatic Agreement. The project involved reconstructing curb ramps at 523 locations citywide. Janus conducted cultural resource analyses to identify and protect properties listed or eligible for the National Register of Historic Places. The study focused on the project's area of potential effect, confirming no archaeological sites or historic materials within the footprint. While the Old Lucerne Historic District was noted, no adverse effects to historic resources were identified.

Oakland Park Sidewalks Local Agency Program (LAP) Project | Florida Department of Transportation (FDOT) District 4

Janus Research conducted cultural resources investigations for FDOT District Four to support a LAP-funded pedestrian improvement project. All work complied with Section 106 of the National Historic Preservation Act, Chapter 267, Florida Statutes, and the FDOT Section 106 Programmatic Agreement. The study evaluated the area of potential effect within the existing roadway right-of-way to identify historic or archaeological resources eligible for the National Register of Historic Places. The survey determined no previously recorded archaeological sites or historic resources within the project footprint, confirming that proposed pedestrian improvements would have no adverse effects on cultural or historic properties.

SE Walton Road Local Agency Program (LAP) Project from SE Lennard Road to SE Green River | Kimley Horn

Janus Research conducted cultural resources investigations for a St. Lucie County pedestrian improvement project under FDOT's Section 106 Programmatic Agreement. All work complied with the National Historic Preservation Act and Chapter 267, Florida Statutes. The study evaluated the area of potential effect within the existing roadway right-of-way to identify archaeological and historic resources eligible for the National Register of Historic Places. Field surveys and archival research confirmed no archaeological sites or historic properties would be affected. Although SE Walton Road is considered historic, it was determined ineligible for listing, allowing project improvements to proceed without cultural resource impacts.



Broward MPO Quick Build Program – Complete Streets Initiative | Broward MPO

MRG provides professional technical services in support of developing the Broward MPO's inaugural Tactical Urbanism/Quick Build Program, which included attending or assisting with the Let's Go Walking!, Let's Go Biking!, and Ciclovía project unveiling events.



Tab D

Organizational Profile and Project Team Qualifications

D. ORGANIZATIONAL PROFILE AND PROJECT TEAM QUALIFICATIONS

This section presents HBC Engineering Company's organizational profile and the qualifications of the proposed project team assembled to support the City of Hollywood under the Gracewood Neighborhood LAP Project. The following pages outline the firm's structure, key personnel, and subconsultant partners, accompanied by an organizational chart illustrating lines of communication and responsibility. Resumes of all proposed staff are included to demonstrate technical competence, FDOT LAP experience, and familiarity with local agency coordination. Each team member's role, level of participation, and specialized expertise are described to illustrate how their contributions will collectively ensure the successful completion of design, permitting, and coordination activities. A comprehensive summary of the Project Manager's experience and qualifications is also provided, emphasizing the individual's ability to lead all project phases in accordance with FDOT LAP and City of Hollywood standards.



DBE/SBE/MBE

Founded in 2006, HBC Engineering Company (HBC) is a Florida-based multidisciplinary consulting firm providing comprehensive planning, design, and construction inspection services across the civil, structural, transportation, and water resources sectors. With more than 80 engineers, designers, and technicians, HBC combines technical expertise and responsiveness to meet the requirements of FDOT and municipal infrastructure programs. The firm is FDOT prequalified in 3.1 Minor Highway Design and 7.1 Signing, Pavement Marking, and Channelization, as well as multiple supporting work groups, enabling full-service roadway, drainage, ADA, and traffic design in accordance with FDOT Design Manual (FDM), Manual on Uniform Traffic Control Devices (MUTCD), and LAP Manual standards.

HBC's performance record includes successful delivery of neighborhood improvement and multimodal safety projects for FDOT Districts 4 and 6, Florida's Turnpike Enterprise (FTE), Miami-Dade County (DTPW and WASD), Broward County, PortMiami, Palm Beach County Water Utilities Department (PBCWUD), GMX, and the Puerto Rico Aqueduct and Sewer Authority (PRASA). Of particular relevance, HBC recently completed a LAP-funded project for the City of Hollywood involving the design

of approximately 7.5 miles of new sidewalk and ADA-compliant pedestrian facilities, demonstrating the firm's capability to deliver federally funded projects from concept through bid-ready design in full compliance with LAP documentation, QA/QC, and reporting requirements.

Subconsultant Team

To deliver the Gracewood Neighborhood LAP Project in accordance with the City of Hollywood's objectives and FDOT LAP requirements, HBC Engineering Company has assembled a team of six specialized subconsultants whose technical capabilities and past performance directly align with the project's scope. Each firm was selected for its proven expertise in federally funded infrastructure projects, its familiarity with FDOT and municipal standards, and its capacity to provide immediate, high-quality support. Together, this team brings the full range of professional disciplines required to develop a constructible, cost-effective, and community-responsive sidewalk and neighborhood improvement project that advances the City's safety and mobility goals.



GPI Geospatial, Inc. (GPI) will provide all surveying and mapping services required to support design development for the Gracewood Neighborhood LAP Project. As an FDOT-prequalified firm in Work Group 8.2, GPI brings extensive experience performing control surveys,

right-of-way mapping, topographic data collection, and construction staking in compliance with FDOT Surveying and Mapping Procedure No. 550-030-101. GPI's field teams and licensed survey professionals have supported multiple FDOT LAP and municipal infrastructure projects throughout Broward and Palm Beach Counties, ensuring accurate and complete base mapping for roadway, drainage, and sidewalk improvement plans. Their familiarity with City of Hollywood standards, FDOT District 4 survey requirements, and LAP documentation protocols ensures all survey deliverables meet federal funding compliance, facilitate efficient design coordination, and support timely project delivery.



**Janus Research, Inc.
(JAN) | Cultural
Resource Assessment**

Janus will perform
the Cultural Resource

Assessment Survey (CRAS) and related cultural documentation required under the FDOT LAP Manual and Section 106 of the National Historic Preservation Act. JAN's professional archaeologists, historians, and architectural historians have extensive experience conducting CRAS studies throughout Florida in compliance with FDOT's Project Development & Environment (PD&E) Manual and State Historic Preservation Office (SHPO) coordination procedures. Their team brings decades of experience evaluating historic structures and archaeological resources within active municipal rights-of-way, ensuring cultural compliance and supporting environmental documentation for federally funded projects. JAN's established working relationships with FDOT District 4 and the Florida Division of Historical Resources will help streamline the review and clearance process for the Gracewood Neighborhood LAP Project, maintaining adherence to all federal and state cultural resource requirements.



**KCI Technologies, Inc.
(KCI) | Landscaping**

KCI will provide landscape
architecture and aesthetic
enhancement services

to support the Gracewood Neighborhood LAP Project. With over 2,400 employee-owners operating from 70 offices nationwide, KCI brings extensive multidisciplinary expertise in civil, transportation,

environmental, and landscape design. The firm's Florida office, located in Fort Lauderdale, has led numerous FDOT and municipal projects that integrate functional roadway design with sustainable and context-sensitive landscape solutions.

KCI registered landscape architects specialize in corridor beautification, planting design, and irrigation systems that enhance safety, accessibility, and neighborhood appeal. Their designs comply with FDOT Standard Plans, Section 580, and City of Hollywood landscape requirements, ensuring all improvements complement the City's Complete Streets goals. KCI will coordinate closely with HBC's roadway and drainage teams to align grading, utility, and irrigation layouts while promoting long-term maintainability and LAP compliance.



**Media Relations
Group, LLC (MRG) |
Public Involvement
and Outreach**

MBE/WBE

A woman-owned firm with over 20 years of public involvement experience, MRG specializes in strategic communications and community outreach tailored for transportation projects. Their team—led by Priscila Clawges and Paulette Summers—offers deep expertise in managing multilingual campaigns, facilitating stakeholder meetings, and executing grassroots outreach programs. MRG's familiarity with Broward County and LAP projects makes them a key asset in delivering inclusive and transparent engagement for this project.



**Pacifica Engineering
Services, LLC (PES)
– Geotechnical
Engineering**

DBE/SBE/MBE

Pacifica Engineering Services, LLC (PE) will provide geotechnical engineering, field testing, and subsurface exploration services in direct support of design development for the Gracewood Neighborhood LAP Project. As a certified DBE/SBE/MBE firm, Pacifica brings extensive experience conducting soil borings, pavement evaluations, and foundation analyses for FDOT, county, and municipal clients across South Florida. The firm's engineers and certified technicians specialize in evaluating

subsurface conditions, determining soil bearing capacities, and providing material recommendations essential for sidewalk, drainage, and utility design.

Pacifica's geotechnical investigations and laboratory testing will be performed in accordance with FDOT Specifications, AASHTO, and ASTM standards, ensuring reliable and defensible results that meet LAP documentation requirements. Their local knowledge of Broward County soil conditions and groundwater behavior supports the development of practical, constructible design recommendations that minimize risk and optimize long-term performance.



**Resource Environmental
Solutions, LLC (RES) |
Environmental
Engineering & Permitting**

RES will provide environmental assessment, permitting, and compliance services in accordance with the FDOT LAP Manual, NEPA, and applicable state and federal regulations. With a strong local presence in Fort Lauderdale and extensive experience supporting FDOT District 4 and municipal clients, RES delivers technical expertise in environmental documentation, wetland delineation, wildlife surveys, and contamination assessments to ensure full regulatory compliance for federally funded projects.

Each of these firms has committed experienced personnel to this contract and confirmed availability aligned with project milestones. Their combined capabilities strengthen the team's overall capacity to deliver a successful, community-focused, and LAP-compliant project for the City of Hollywood.



Technical Capacities of the Team

TABLE 04: FDOT Technical Qualifications Matrix below outlines the FDOT Technical Certification categories held by HBC and its subconsultant team. While the required services for this contract — **3.1 Minor Highway Design (HBC); 7.1 Signing, Pavement Marking and Channelization; and 8.2 Design, Right of Way & Construction Surveying (GPI)**—are fully covered, this chart also demonstrates the depth and versatility of our team. Our firms maintain prequalifications across a wide range of categories, reflecting our capacity to support additional tasks and deliver comprehensive solutions throughout the life of the contract.

TABLE 04: FDOT Technical Qualifications Matrix

TC	Description	HBC	GPI	JAN	KCI	MRG	PES	RES
2.0	Project Development and Environmental (PD&E) Studies	●			●			
3.1	Minor Highway Design	●			●			
3.2	Major Highway Design	●			●			
3.3	Controlled Access Highway Design	●			●			
4.1.1	Miscellaneous Structures	●			●			
4.1.2	Minor Bridge Design	●			●			
4.2.1	Major Bridge Design - Concrete				●			
4.2.2	Major Bridge Design - Steel				●			
5.1	Conventional Bridge Inspection				●			
5.3	Complex Bridge Inspection				●			
5.4	Bridge Load Rating	●			●			
6.1	Traffic Engineering Studies	●			●			
6.2	Traffic Signal Timing	●			●			
6.3.1	Intelligent Transportation Systems Analysis and Design	●			●			
6.3.2	Intelligent Transportation Systems Implementation	●			●			
6.3.3	Intelligent Transportation Traffic Engineering Systems Communications	●			●			
6.3.4	Intelligent Transportation Systems Software Development	●						
7.1	Traffic Operations Design - Signing, Pavement Marking and Channelization	●			●			
7.2	Traffic Operations Design - Lighting	●			●			
7.3	Traffic Operations Design - Signalization	●			●			
8.1	Control Surveying		●		●			
8.2	Design, Right of Way & Construction Surveying		●		●			
8.3	Photogrammetric Mapping		●					
8.4	Right of Way Mapping		●		●			
9.1	Soil Exploration						●	

● FDOT's Technical Certification Required

● Other FDOT's Technical Certification

TABLE 04: FDOT Technical Qualifications Matrix

TC	Description	HBC	GPI	JAN	KCI	MRG	PES	RES
9.2	Geotechnical Classification Laboratory Testing						●	
9.4.1	Standard Foundation Studies				●			
10.1	Roadway Construction Engineering Inspection	●			●		●	
10.3	Construction Materials Inspection	●			●		●	
10.4	Minor Bridge & Miscellaneous Structures CEI	●			●			
10.5.1	Major Bridge CEI - Concrete				●			
11.0	Engineering Contract Administration and Management				●			
13.3	Policy Planning	●			●			
13.4	Systems Planning	●			●			
13.5	Subarea/Corridor Planning	●			●			
13.6	Land Planning/Engineering	●			●			
13.7	Transportation Statistics	●			●			
15.0	Landscape Architect				●			
N/A	Non-Professional Service Firm			●		●		●

- FDOT's Technical Certification Required
- Other FDOT's Technical Certification



Project Manager Hernan Lugo, MS, PE, CFM

HBC Engineering Company (HBC) is proud to designate **Hernan Lugo, MS, PE, CFM**, as the Lead Engineer for the City of Hollywood's Gracewood Neighborhood LAP Project. Hernan is a seasoned Project Manager with 27 years of civil engineering experience, including eight years with HBC, and extensive expertise in roadway, drainage, stormwater, and utility coordination design. He has managed and served as Engineer of Record on numerous FDOT- and LAP-funded infrastructure projects, including sidewalk, drainage, and mobility improvements that advance ADA compliance, neighborhood connectivity, and resilience—**core priorities of this contract**.

Hernan's technical leadership spans the full project lifecycle—from concept development and permitting through design and construction support—consistent with LAP and FDOT procedural requirements. He brings extensive experience coordinating across agencies and disciplines to deliver neighborhood infrastructure improvements involving ADA-compliant sidewalks, multimodal transportation corridors, and sustainable stormwater systems. His in-depth understanding of South Florida's regulatory and permitting framework, combined with a strong record managing projects funded through municipal, state, and federal programs, ensures the Gracewood Neighborhood LAP project will advance the City's goals for safety, mobility, and resilient community design.

Hernan holds active licensure as a Professional Engineer in the State of Florida & Texas and meets and exceeds the qualification requirements outlined in this RFQ. As a Certified Floodplain Manager and Florida Certified Building Contractor, he offers a comprehensive, multidisciplinary approach to resilient and efficient infrastructure design. **His resume is in Appendix A. Copies of professional credentials are provided in Appendix B of this package.**

Below are some of his representative project experience:

- Hollywood Gardens Sidewalk Complete Streets LAP Project.
- Boca Rio Road Widening from Palmetto Park Rd to Glades Rd.
- SR-7/US-441 Transit Corridor Improvements LAP Project Tasks 1 & 2
- SR-817/University Drive from Nova Drive to SR-84
- Homewood Boulevard from Old Germantown Road to Lowson Boulevard.
- I-75/Alligator Alley Rest Area and Education Center Master Plan Project

Hernan's leadership ensures the City of Hollywood will receive responsive, qualified, and technically sound support throughout the life of this contract.



Project Team

Adebayo Coker, PE |

Principal-in-Charge | PD&E Studies Lead



Adebayo brings more than **33 years** of experience in civil and transportation engineering, specializing in Project Development & Environment (PD&E)

studies, multimodal planning, and complete streets corridor design. As Principal-in-Charge, he provides executive oversight and technical direction for HBC's FDOT- and LAP-funded assignments, ensuring regulatory compliance, quality assurance, and stakeholder coordination. His experience spans corridor studies, traffic operations, signalization, drainage integration, and lighting design for agencies including FDOT Districts 4 and 6, Miami-Dade County, and the City of Hollywood. Adebayo's leadership includes managing the **PD&E study for Johnson Street in Hollywood and the SR-7/US-441 Transit Corridor Improvements**, as well as serving as Project Manager for **NE 2nd Avenue Reconstruction**. Licensed as a Professional Engineer in Florida, he maintains FDOT certifications in QA/QC, Advanced MOT, and Asphalt Paving, supporting consistent delivery of resilient, community-focused infrastructure solutions.

Edgar Diaz, MS, PE, PSM |

QA/QC Manager



Edgar brings **37 years** of experience in civil engineering, project management, and quality assurance, including 19 years with HBC. He provides QA/QC oversight across multidisciplinary roadway, drainage, and utility projects to ensure that all design phases from concept through final plans, meet FDOT and LAP compliance standards. His expertise encompasses constructability reviews, cost estimating, scheduling, and team coordination for transportation, water, and public works infrastructure. Edgar's leadership includes **QA/QC management for SR-80/Southern Boulevard, SR-713/Kings Highway, and multiple roadway and lighting projects for FDOT District 4, as well as cost and quality oversight for the NE 2nd Avenue Reconstruction for Miami-Dade County**.

Licensed as a Professional Engineer and Professional Surveyor and Mapper in Florida, Edgar upholds HBC's commitment to precision, constructability, and long-term value in every design package.

Jose A. Lopez, PE |

3.2 | Minor Highway Design Lead



Jose brings over **20 years** of experience in roadway design, traffic operations, and infrastructure improvements for FDOT, Miami-Dade County, and municipal

clients. He leads roadway and geometric design tasks under FDOT Work Group 3.1, with a focus on plan production, cross-section development, and design consistency with FDM and LAP requirements. His portfolio includes corridor widening, resurfacing, and safety enhancement projects incorporating ADA upgrades, drainage coordination, and intersection improvements. Jose has contributed to major assignments such as the **SR-7/US-441 Transit Corridor Improvements, NW 84th Avenue Reconstruction, and Johnson Street Complete Streets projects**. Licensed as a Professional Engineer in Florida and IMSA-certified, Jose ensures technical accuracy, compliance, and coordination across all design disciplines, supporting efficient delivery of constructible and cost-effective roadway solutions.

Claudia Bustamante, MS, PE |

7.1 | Signing, Pavement Marking and Channelization Lead



Claudia has 21 years of experience in transportation engineering and planning, specializing in roadway design, signing and pavement marking (S&PM),

channelization, signalization, and temporary traffic control plans (TTCPs). She has delivered numerous FDOT- and LAP-funded projects across Florida, integrating safety, mobility, and ADA compliance within complete streets and multimodal corridors. Her expertise includes preparing construction documents, developing maintenance of traffic strategies, and ensuring consistency with FDOT, MUTCD, and ADA standards. Claudia has served as project engineer and task lead for corridor enhancement projects such as **Johnson Street Complete Streets, Barwick Road LAP Improvements, and the SR-7/US-441 Transit Corridor**. A licensed Professional Engineer in Florida, she applies her technical depth and coordination skills to produce accurate, compliant, and context-sensitive transportation design solutions. safety, efficiency, and community needs.

Juan J. Flores Jr., PhD, AICP | Transit and Transportation Planning Lead



Juan has **24 years** of professional experience in multimodal transportation planning, transit operations analysis, and project development for federal, state, and local agencies. He specializes in integrating planning, engineering, and policy to advance corridor studies, transit feasibility assessments, and PD&E documentation consistent with FDOT and FTA guidelines. His expertise includes travel demand modeling, ridership forecasting, land use evaluation, and cost-effective implementation strategies supporting sustainable mobility initiatives. Juan has managed major assignments including the Comprehensive **Development Master Plan for Miami-Dade County, the SR-953/Le Jeune Road Intersection Improvement Study, and the Districtwide Systems Planning for Port and Freight Services**. A certified planner (AICP) and PhD in Business Operations, he combines technical rigor and data analytics to deliver planning solutions aligned with federal, state, and local transportation objectives.

Gonzalo Barrera, PE | Signalization Engineering Lead



Gonzalo has **7 years** of experience in traffic signalization, roadway lighting, and temporary traffic control (TTC) design for FDOT Districts 4 and 6, Florida's Turnpike Enterprise, and Miami-Dade County. He specializes in preparing signalization plans, interconnect layouts, and cabinet details, as well as developing 3D modeling for roadway and intersection improvements consistent with FDOT standards and ADA requirements. His representative projects include the **SR-7/US-441 Transit Corridor Improvements, SR-817/University Drive Widening and Signalization, and multiple design-build corridor improvements for Miami-Dade DTPW**. Gonzalo also contributed to the Wrong-Way Vehicle Detection System Implementation for Florida's Turnpike Enterprise. A licensed Professional Engineer in Florida and certified in TTC Advanced, Gonzalo applies technical precision and coordination to deliver efficient, compliant, and safety-focused signalization designs.

Orlando Penate, PE, EE, IMSA III | Lighting & Electrical Lead



Orlando brings **19 years** of experience in electrical engineering, roadway lighting, and ITS infrastructure, with extensive involvement in FDOT and municipal improvement programs throughout South Florida. He serves as Engineer of Record for intersection and corridor lighting systems, overseeing voltage drop calculations, lighting design analyses, and circuiting layouts in compliance with FDOT, NEC, and IMSA standards. His representative work includes the **SR-7/US-441 Transit Corridor Improvements, Hollywood Gardens Sidewalk Improvement Project, and the City of Pembroke Pines Street Lighting Inventory and Illumination Levels Study**. Orlando has also led lighting retrofits and power distribution system assessments for Miami-Dade County's facility recertification program and City of West Park safety enhancements. A licensed Electrical Engineer and IMSA Level III Certified Traffic Signal Field Technician, Orlando provides reliable technical direction ensuring safety, efficiency, and long-term maintainability of all lighting and electrical systems.

Moatz Saad, PhD, PE, PTOE, IMSA II | Traffic Engineering & Safety Studies Lead | Transit and Transportation Planning



Moatz brings **13 years** of experience specializing in traffic safety, transportation systems management, and intelligent mobility planning for FDOT and municipal clients. He leads corridor safety and operational analyses using advanced modeling tools such as VISSIM, Synchro, and the Surrogate Safety Assessment Model (SSAM), ensuring data-driven recommendations for roadway and intersection improvements. His experience includes leading the **Johnson Street Complete Streets PD&E Study for the City of Hollywood, the SR-817/University Drive Widening and Signalization Study, and Districtwide Traffic Operations and Scoping Reports for FDOT Districts 4 and 6**. Dr. Saad's background also includes Smart Work Zone design, traffic simulation for managed toll lanes, and integration of connected and autonomous vehicle technologies. A licensed Professional Engineer and Professional Traffic

Operations Engineer, he applies a rigorous analytical approach to enhance safety, efficiency, and mobility across multimodal transportation networks.

Sreelatha Nandivada, MS, PE | Miscellaneous Structures Lead



Sreelatha has **22 years** of structural engineering experience specializing in bridge design, load rating, and structural evaluations for transportation

infrastructure. Her expertise spans steel and concrete bridge design, pedestrian structures, retaining walls, and seismic analysis, applying AASHTO, AISC, and DOT-specific standards. She has supported agencies including FDOT, TXDOT, MODOT, and NYDOT in the design and analysis of highway and pedestrian bridges using software such as STAAD.Pro, LEAP Bridge, and AASHTOWare BrR. Her representative work includes bridge design for **MODOT's Route J Over Big Creek, load rating for NCDOT and ALDOT bridge programs, and structural design for the Brooklyn Bridge Rehabilitation**. Licensed in multiple states including Florida, Sreelatha applies rigorous analytical methods and quality control to ensure safe, resilient, and code-compliant structural solutions for complex transportation projects.

Teodoro Tefel, PE | Maintenance of Traffic (MOT) Lead | Cost Estimator



Teodoro brings **38 years** of civil engineering experience specializing in roadway design, traffic control, and constructability planning for FDOT and municipal infrastructure projects. He has served as Engineer of Record and Senior Engineer for numerous roadway, resurfacing, and widening projects, integrating Signing and Pavement Marking (S&PM) and Maintenance of **Traffic (MOT) plans consistent with FDOT and MUTCD standards. His experience includes leading MOT design for Miami-Dade WASD** utility improvements, districtwide scoping and resurfacing reports for FDOT District 6, and roadway widening projects in Palm Beach and Collier counties. Teodoro's expertise in cost estimating, drainage analysis, and temporary traffic control ensures constructible, safe, and cost-effective solutions for complex corridor and utility coordination projects. A licensed Professional Engineer in Florida and FDOT Advanced MOT certified, he provides reliable

engineering judgment and quality oversight from concept development through final design.

Christopher Soto, PE, RSO | LAP Compliance Specialist; Constructability Reviews



Christopher has **13 years** of experience specializing in Local Agency Program (LAP) compliance, construction engineering and inspection (CEI), and contract administration for FDOT- and federally funded infrastructure projects. He ensures adherence to FDOT and FHWA standards across all design and construction phases, with expertise in permitting, funding documentation, quality assurance, and constructability reviews. Christopher has managed and supported **LAP projects for the City of Doral, City of Hollywood, and Palm Beach County, including the Federally Funded Citywide Pedestrian, Drainage & Roadway Improvements LAP Project and the CEI Services for the Seminole Boulevard Multi-Use Trail and Pedestrian Lighting LAP Project**. His responsibilities include oversight of ADA compliance, MOT, drainage, and utility coordination to ensure regulatory alignment and constructible design packages. A licensed Professional Engineer and Radiation Safety Officer (RSO), Christopher brings field-proven experience and regulatory knowledge to ensure projects are delivered safely, efficiently, and in full compliance with LAP and FDOT requirements.

Eugene Hunter, IMSA I | Construction Administration



Eugene brings **35 years** of experience in construction engineering and inspection (CEI), specializing in roadway, bridge, and LAP-funded infrastructure projects for FDOT Districts 4 and 6. He has served as Project Administrator and Senior Inspector on major resurfacing, drainage, signalization, and lighting contracts, ensuring compliance with FDOT specifications, LAP procedures, and federal funding requirements. His expertise includes contract administration, field inspection, documentation control, MOT coordination, and SWPPP monitoring, supporting efficient construction oversight from mobilization through final acceptance. Eugene's representative work includes the **Seminole Boulevard Multi-Use Trail and Pedestrian Lighting LAP Project, SR-834/Sample Road and SR-835/Powerline Road**

Reconstruction, and SR-20 & SR-26 Concrete and Earthwork Improvements. Certified in FDOT CTQP, MOT, ACI, and IMSA programs, Eugene provides hands-on leadership, technical rigor, and regulatory expertise to ensure safe, compliant, and high-quality project delivery.

Sonny Abia, PhD, PE | Utility Coordination



Dr. Abia has **35 years** of civil engineering experience specializing in utility coordination, quality assurance, and roadway design for FDOT, Miami-Dade County, and other public agencies. He manages coordination with Utility Agency/Owners (UAOs), oversees conflict analysis, prepares Final Utility Certification packages, and ensures compliance with FDOT's Utility Accommodation Manual and LAP procedures. His representative work includes serving as **Utility Coordinator and QA/QC Reviewer for the SR-817/University Drive Widening, SR-7/US-441 Transit Corridor Improvements, and NW 84th Avenue Reconstruction Design-Build projects.** Dr. Abia's technical expertise extends to permitting, drainage, and bridge coordination, supported by his PhD in Civil Engineering from the University of Miami and multiple FDOT certifications, including TTC Advanced. His leadership ensures effective communication among agencies and contractors, minimizing conflicts and maintaining schedule and budget performance across complex transportation infrastructure projects..

Julia Beliz, EI | GIS Analyst



Julia brings **3 years** of professional experience in civil engineering and geospatial data management, supporting FDOT- and LAP-funded infrastructure programs. She specializes in GIS analysis, mapping, and database development to support roadway, drainage, and utility coordination tasks. Her expertise includes spatial data processing, field data collection, and integration of survey and design datasets into GIS platforms to enhance visualization and project coordination. Julia has assisted in developing GIS deliverables for projects such as the **SR-7/US-441 Transit Corridor Improvements, Johnson Street Complete Streets, and multiple City of Hollywood LAP projects. As an Engineer Intern with training in**

ArcGIS, AutoCAD Civil 3D, and MicroStation, Julia contributes to HBC's multidisciplinary design efforts by ensuring that geospatial information is accurate, consistent, and accessible for decision-making and compliance reporting.

Frank Paruas, PSM | 8.2 | Design, Pavement Marking and Channelization Lead



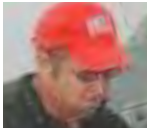
Frank specializes in surveying and mapping with expertise in 3D design surveys, subsurface utility engineering (SUE), and right-of-way mapping. With 24 years of experience across South Florida, he leads GPI Geospatial's survey operations as Project Surveyor and Manager. Frank has managed over 80 task work orders for FDOT District 4, overseeing large-scale survey efforts for highway corridors, intersection signal upgrades, and drainage assessments. His technical strengths include terrestrial and aerial lidar integration, static and mobile scanning, and high-accuracy control networks. Notable projects include **3D surveys along SR 9/I-95, SR 710, and Alligator Alley,** and **right-of-way mapping for Lantana Road.** A licensed Professional Surveyor and Mapper in Florida, Frank is also a member of FSMS and NSPS. He is known for leveraging advanced survey technology to support accurate, efficient, and regulation-compliant infrastructure design.

Mark Clark, MS, CEP | Environmental & Permitting Lead

Mark brings 35 years of experience in environmental permitting, ecological assessments, and NEPA compliance for transportation and infrastructure projects throughout Florida. He specializes in wetland delineation, environmental resource permitting, protected species coordination, and construction compliance for FDOT and local agencies. His work includes mitigation design, permitting oversight, and environmental documentation for roadway, bridge, and drainage improvements. Mark has managed permitting and environmental monitoring for projects such as the Districtwide Environmental Compliance Program for FDOT District 6, SR 9/I-95 Express Lanes in Broward County, and seawall replacements for the City of Miami Beach. A Certified Environmental Professional (CEP) and Qualified Stormwater Management Inspector, he ensures full regulatory adherence and technical

precision in all phases of project development and construction, supporting environmentally responsible and compliant project delivery.

Kenneth Hardin, MA | Cultural Resource Assessment Surveys (CRAS) Lead



Kenneth specializes in cultural resource management, Section 106 compliance, and historic preservation, with over **45 years** of experience supporting environmental reviews for transportation infrastructure. As **Cultural Assessment Lead and President of Janus Research, he oversees CRAS and Section 4(f) documentation for FDOT and LAP-funded projects across Districts 4 and 6. Kenneth is a court-certified expert witness and a nationally recognized authority in NEPA cultural compliance.** He has conducted and led cultural assessments for I-95 PD&E studies across Broward, Palm Beach, and Miami-Dade Counties, evaluating archaeological and historic resources for National Register eligibility. His extensive relationships with SHPO, FHWA, FTA, and federal agencies facilitate streamlined regulatory coordination and creative mitigation strategies. A Registered Professional Archaeologist, Kenneth meets the Secretary of the Interior's Standards and is a founding member of the American Cultural Resource Association. He is known for balancing preservation goals with project timelines to ensure cultural compliance without compromising delivery.

Wesley C. Foster, PE, SI, MBA | Geotechnical Engineering Lead



Wesley specializes in geotechnical engineering, threshold inspections, and construction materials testing, with over a decade of experience supporting public and private infrastructure projects across Florida. As Principal Engineer at Pacifica Engineering Services, he leads quality control programs, subsurface investigations, and structural inspections for large-scale vertical and transportation developments. His qualifications include Florida licensure as a PE and Special Inspector, with certifications from ACI, ICC, and PTI. Wesley has overseen private provider services on projects such as the **FAU Schmidt Family Complex, Wynwood Square, and Icon Marina Village conducting plan reviews**, threshold inspections, and

foundation testing. He ensures compliance with FDOT and local codes while delivering precise, schedule-driven field engineering solutions.

Todd Mohler, RLA, ISA, IA | Landscaping Architecture Lead



Todd specializes in landscape architecture, irrigation design, and streetscape planning, with **31 years** of experience delivering context-sensitive improvements for transportation corridors, parks, and urban environments. Licensed in Florida, Georgia, and South Carolina, he offers expertise in native plant design, tree inventories, and irrigation water management using advanced technologies. His portfolio includes **FDOT- and LAP-funded projects such as the SR-5/US-1 Overseas Highway beautification, the SR-75 Urban Swamp concept, and the SR-426 Complete Streets project.** Todd has supported multiple municipalities including Coconut Creek, Boca Raton, and Miami Beach from concept through permitting, combining aesthetics, sustainability, and performance in every design.

Paulette Summers | Public Involvement Lead



Paulette specializes in public involvement, community engagement, and strategic communications for infrastructure and municipal projects, with **26 years** of experience supporting transportation, utility, and urban improvement initiatives across Florida. As the Public Involvement and Communications Lead at MRG, she develops and implements outreach campaigns, public meeting strategies, and stakeholder coordination plans for clients including FDOT Districts 4 and 6, the City of Fort Lauderdale, and the Broward MPO. Paulette's recent work includes public involvement for the Melrose Manors and Riverland Neighborhood Stormwater Improvements, the FDOT Key West Pedestrian Hybrid Beacon (PHB) campaigns, and the Broward MPO's Quick Build Complete Streets Initiative. She creates multilingual materials, manages media coordination, and facilitates communication between project teams and the public. With a background in international business and marketing, Paulette is known for her relationship-building skills, problem-solving under tight deadlines, and ability to foster trust among diverse communities and agencies.

ORGANIZATIONAL CHART



Project Manager: **Victoria Ulysse**

LEGEND

- HBC Engineering Company¹ (DBE/SBE/MBE) | 3.1 | 7.1
- GPI Geospatial, Inc.² | 8.2
- Janus Research, Inc.³
- KCI Technologies, Inc.⁴
- Media Relations Group, LLC⁵ (MBE/WBE)
- Pacifica Engineering Services, LLC⁶ (DBE/SBE/MBE)
- RES Florida Consulting, LLC⁷



Principal-in-Charge

Adebayo Coker, PE¹
33 | 80%



Project Manager

Hernan Lugo, MS, PE¹
27 | 100%



Quality Assurance/Quality Control

Edgar Diaz, MS, PE, PSM¹
Exp. 37 | 80%

Engineering Services

3.1 | Minor Highway Design

Jose Lopez, PE, IMSA I¹ | 20 | 80%
Alexander Tzenkov, EI¹ | 3 | 90%
Osmin Ocon, EI¹ | 3 | 90%

7.1 | Signing, Pavement Marking and Channelization

Claudia Bustamante, MS, PE¹ | 21 | 80%
Ynaja Juste, EI¹ | 9 | 90%

8.2 | Design, Right of Way & Construction Surveying

Frank Paruas, PSM² | 24 | 90%
Saul Brand, PSM² | 24 | 80%

Transit and Transportation Planning

Juan J. Flores, PhD, AICP¹ | 24 | 80%
Moatz Saad, PhD, PE, PTOE, IMSA II¹ | 13 | 80%

Signalization Engineering

Gonzalo Barrera, PE¹ | 7 | 80%
Osmin Ocon, EI¹ | 3 | 90%

Lighting & Electrical Engineering

Orlando Penate, PE, IMSA III¹ | 19 | 90%
Maikel Fiallo Nunez, PE¹ | 24 | 90%

Traffic Engineering & Safety Studies

Moatz Saad, PhD, PE, PTOE, IMSA II¹ | 13 | 80%
Jeremy Braithwaite, IMSA II¹ | 8 | 90%

Miscellaneous Structures

Sreelatha Nandivada, MS, PE¹ | 22 | 80%
Roberto Rubio, MS, PE¹ | 35 | 90%
Bunrith Heng, MS, PE¹ | 31 | 90%

Drainage Engineering

Hernan Lugo, MS, PE, CFM¹ | 27 | 100%
Joseph Maceo, EI¹ | 7 | 90%
Derrek Okosun, EI¹ | 6 | 90%
Yissell Navarro Sanchez, EI¹ | 1 | 90%

Maintenance of Traffic (MOT)

Teodoro Tefel, PE¹ | 38 | 80%
David Coker, EI, IMSA I¹ | 7 | 90%

Environmental and Permitting

Mark Clark, MS, CEP⁷ | 36 | 80%
Mechelle L. Kerns, Ph.D., PMP, RPA⁷ | 25 | 90%

Cultural Resource Assessment Surveys (CRAS)

Kenneth Hardin³ | 45 | 60%
James Pepe³ | 33 | 80%
Amy Strelman³ | 27 | 90%

Geotechnical Engineering

Wesley C. Foster, PE, SI, MBA⁶ | 12 | 75%
Reinaldo Villa, MS, PE⁶ | 19 | 90%

Project Development & Environmental (PD&E) Studies

Adebayo Coker, PE¹ | 33 | 80%
Hernan Lugo, MS, PE, CFM¹ | 27 | 100%

Support & Integration Services

ADA Compliance

Hernan Lugo, MS, PE, CFM¹ | 27 | 100%

LAP Compliance

Christopher Soto, PE, RSO¹ | 13 | 100%

Construction Administration

Eugene Hunter, IMSA I¹ | 35 | 100%
Claudia Rodriguez, PE, IMSA I¹ | 9 | 100%
Rodolfo Caceres, PE, IMSA I¹ | 21 | 100%
John Snyder III¹ | 33 | 100%

Utility Coordination

Sonny Abia, PhD, PE¹ | 35 | 80%
Leandro Vazquez¹ | 4 | 90%

GIS Analyst

Julia Beliz, EI¹ | 3 | 80%

Constructability Review

Christopher Soto, PE, RSO¹ | 13 | 100%

Cost Estimator

Teodoro Tefel, PE¹ | 38 | 80%
Joseph Williams¹ | 38 | 90%

Landscape Architecture

Todd Mohler, RLA, ISA, IA⁴ | 31 | 75%
Kirk Hoosac, RLA⁴ | 20 | 75%

Public Involvement

Paulette Summers⁵ | 28 | 80%
Melannie Gomez¹ | 3 | 90%



Tab E

Approach to Scope of Work

E. APPROACH TO SCOPE OF WORK

Provide in concise narrative form your understanding of the City's needs, goals and objectives as they relate to the project as described in the scope of services, and your overall approach to accomplishing the project. Give an overview on your proposed vision, ideas and methodology. Describe your proposed approach to the scope of work. Also provide information on your firm's current workload and how this contract will fit into your workload. Describe available facilities, technological capabilities and other available resources you offer for the project.

Understanding of the City's Needs, Goals, and Objectives and Overall Approach

HBC Engineering Company (HBC) fully understands the City of Hollywood's vision to enhance pedestrian/bicyclist safety, ADA accessibility, and multimodal connectivity within the Gracewood neighborhood while maintaining sensitivity to existing urban infrastructure and community input. This initiative, bounded by Sheridan Street, Taft Street, SR 7/US 441, and N 56 Avenue, is a priority under the Broward MPO's CSLIP program and funded through the FDOT Local Agency Program (LAP). The City's goals extend beyond regulatory compliance. They emphasize context sensitive design, integration with existing infrastructure, and responsiveness to community input. HBC's approach is rooted in a phased, field-informed methodology that prioritizes constructability, stakeholder coordination, and regulatory clarity. Our team is committed to delivering a sidewalk network that is not only ADA compliant but also enhances the character and functionality of the neighborhood

HBC fully understands that the City's objectives go beyond compliance. They encompass a commitment to context sensitive design and conformance with FDOT LAP, Florida Greenbook, and Broward County standards. Our approach embraces these goals with a field informed, phased methodology that ensures community alignment, regulatory clarity, and constructability throughout design development.

The City's goals include:

- Improving walkability and ADA access near schools, churches and residential corridors.
- Construct a continuous and compliant sidewalk network that fills existing gaps, replaces deteriorated sections, and mitigates recurring access and drainage issues.
- Complying with LAP design, documentation, and permitting requirements.
- Integrating public feedback and minimizing community disruption.
- Coordinating proactively with utility agencies and permitting authorities.

