

HARRISON ST. PROJECT UPDATE PRESENTATION

PRESENTED BY BURKHARDT CONSTRUCTION, INC.

PROJECT PHASING



PROJECT PHASING OVERVIEW AND SCHEDULE UPDATE

Phases 1–5 Complete

- Streetscape improvements through Phase 5 have been substantially completed and opened to the public.

Phase 6 Construction

- Scheduled to begin **July 6, 2026**.
- Construction duration is anticipated to be approximately **2.5 months**.
- Work will include completion of the final streetscape improvements between **20th Avenue and 21st Avenue** on the north side of Harrison Street.

Final Project Activities

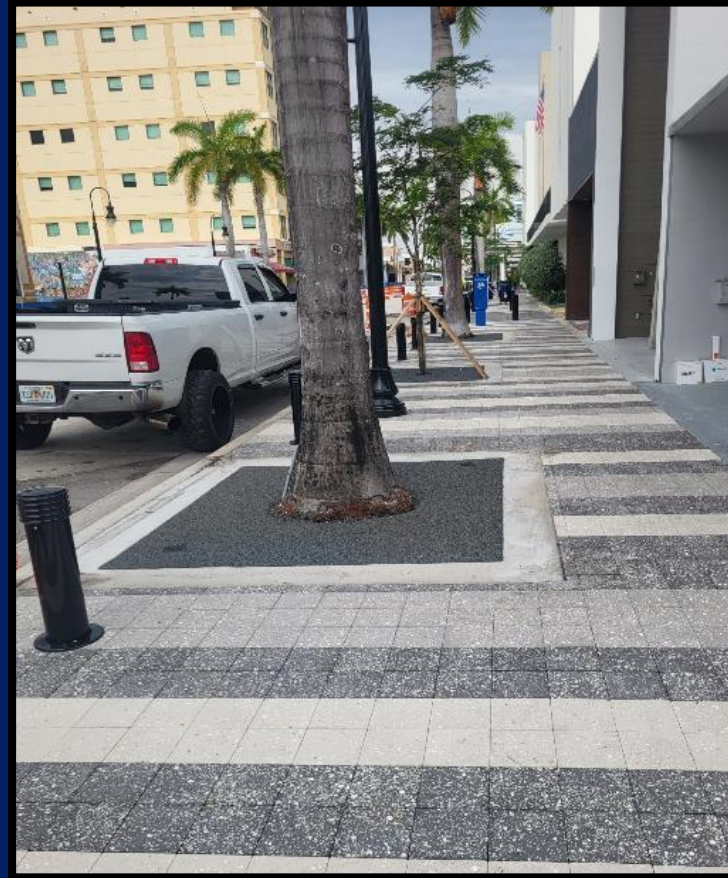
- As Phase 6 progresses, construction will transition into the project's final roadway improvements, including:
 - Crosswalk reconstruction and enhancements
 - Milling and resurfacing operations
 - Final pavement markings and striping
 - Project closeout activities

PROJECT PHASING OVERVIEW



Substantially Completed Streetscape at Phase 1, 2 & 3

NOTABLE STREETScape ENHANCEMENTS



New Flexi-Pave tree pits, decorative lighting, and Bridal Veil tree plantings contribute to the transformation of Harrison Street.

SIDEWALK EXTENSION – HOSHI & SUSHI THAI CUISINE

IMPROVEMENT OVERVIEW

- CONSTRUCTED AS PART OF PHASE 4 OF THE HARRISON STREET STREETScape PROJECT.
- SIDEWALK EXTENSIONS WERE DESIGNED TO EXPAND THE PEDESTRIAN REALM AND PROVIDE ADDITIONAL OUTDOOR SEATING AND GATHERING SPACE FOR ADJACENT BUSINESSES.

KEY FEATURES

- EXPANDED SIDEWALK AREAS EXTENDING BEYOND THE EXISTING CURB LINE.
- INCREASED SPACE FOR OUTDOOR DINING, SEATING, AND PEDESTRIAN ACTIVITY.
- DECORATIVE TRENCH DRAINS INCORPORATED TO MAINTAIN EXISTING DRAINAGE AND COMPLEMENT THE STREETScape DESIGN.
- SECURITY BOLLARDS INSTALLED ALONG THE PERIMETER TO PROVIDE PROTECTION FOR PATRONS AND PEDESTRIANS.
- DECORATIVE PAVER ENHANCEMENTS CONSISTENT WITH THE HARRISON STREET STREETScape AESTHETIC.

SIDEWALK EXTENSION – HOSHI & SUSHI THAI CUISINE



Existing conditions in front of Hoshi & Sushi Thai Cuisine



SIDEWALK EXTENSION – HOSHI & SUSHI THAI CUISINE



New sidewalk extension and outdoor seating area completed in front of Hoshi & Sushi Thai Cuisine as part of the Phase 4 improvements.



RESIDENT & BUSINESS OUTREACH DURING CONSTRUCTION

Proactive Communication

- Ongoing coordination between the Hollywood CRA and Burkhardt Construction to keep residents and businesses informed of upcoming construction activities.
- Advance notifications provided prior to major construction impacts and phase transitions.

Coffee with the Crew

- Monthly outreach events held throughout construction.
- Provides merchants an opportunity to meet directly with the project team, ask questions, and receive project updates.

Maintaining Business Access

- Continuous pedestrian access maintained to businesses throughout construction.
- Sidewalks and access routes phased to minimize impacts to merchants and patrons.
- Construction activities coordinated to keep businesses accessible and operational.

Responsive Coordination

- Ongoing coordination with merchants, property owners, and residents to address concerns and minimize construction impacts.

COFFEE WITH THE CREW



Coffee with the Crew at Social Room, Elixir Kava Bar & Sasa Italian Gourmet

QUESTIONS?