

Preliminary Schedule – Influent Pump Station Upgrade Project

Task Name	Year 1												Year 2												Year 3																
	1	2	3	4	5	6	7	8	9	10	11	12	1	2	3	4	5	6	7	8	9	10	11	12	1	2	3	4	5	6	7	8	9	10	11	12					
Notice to Proceed	◆																																								
Task 2: Pre-Design Report	■																																								
Item 2.1 Prepare Draft Pre-Design Report	■																																								
Item 2.2 City Review and Comment		■																																							
Item 2.3 Prepare Final Pre-Design Report			■																																						
Item 2.4 Review and Final Acceptance by City				■																																					
Task 3: Detailed Design				■																																					
Item 3.1 30% Submittal				■																																					
Item 3.1.1 Prepare Detailed Documents				■																																					
Item 3.1.2 Peer Review at 30% Completion							◆																																		
Item 3.1.3 Cost Estimate Update for City Review				■																																					
Item 3.1.4 City Review and Comment							■																																		
Item 3.1.5 Review and Incorporate City Comments								■																																	
Item 3.2 60% Submittal						■																																			
Item 3.2.1 Continue Detail Document Preparation						■																																			
Item 3.2.2 Peer Review at 60% Completion								◆																																	
Item 3.2.3 Cost Estimate Update for City Review								■																																	
Item 3.2.4 City Review and Comment									■																																
Item 3.2.5 Review and Incorporate City Comments										■																															
Item 3.3 100% Submittal								■																																	
Item 3.3.1 Continue Detail Document Preparation								■																																	
Item 3.3.2 QA/QC Review at 100% Completion										◆																															
Item 3.3.3 Cost Estimate Update for City Review									■																																
Item 3.3.4 City Review and Comments											■																														
Item 3.3.5 Review and Incorporate City Comments												■																													
Item 3.3.6 Final Contract Documents																								◆																	

1021-690

Preliminary Schedule – Influent Pump Station Upgrade Project

Task Name	2026												2027												2028												2029											
	6	7	8	9	10	11	12	1	2	3	4	5	6	7	8	9	10	11	12	1	2	3	4	5	6	7	8	9	10	11	12	1	2	3	4	5	6	7	8	9	10	11	12					
Task 4: Permitting	[Blue bar from 6/1 to 11/1]																																															
Item 4.1 Site Development Plan	[Green bar from 6/1 to 8/1]																																															
Item 4.2 FDEP	[Green bar from 7/1 to 10/1]																																															
Item 4.4 BORED	[Green bar from 8/1 to 10/1]																																															
Item 4.5 Hollywood Building Department	[Green bar from 8/1 to 10/1]																																															
Item 4.7 Miscellaneous	[Green bar from 8/1 to 10/1]																																															
Task 5: Bidding and Award													[Blue bar from 1/1 to 7/1]																																			
Item 5.1 Advertise													[Green bar from 1/1 to 4/1]																																			
Item 5.2 Bid													[Orange diamond at 3/1]																																			
Item 5.3 Award													[Green bar from 4/1 to 6/1]																																			
Task 6: Construction													[Blue bar from 6/1 to 12/1]																																			
Item 6.1 Construction Observation & Office Adminis.													[Green bar from 6/1 to 12/1]																																			
Item 6.2 Substantial Completion																									[Orange diamond at 1/1]																							
Item 6.3 Final Completion																																					[Orange diamond at 6/1]											
Item 6.4 Progress Meetings													[Green bar from 6/1 to 12/1]																																			
Task 7: Start-up																																					[Blue bar from 1/1 to 7/1]											
Item 7.1 O&M Manuals																																					[Green bar from 1/1 to 6/1]											
Item 7.2 Operator Training																																					[Green bar from 1/1 to 7/1]											
Item 7.3 Process Startup Assistance																																					[Green bar from 1/1 to 2/1]											
Item 7.4 Process Performance Testing																																					[Green bar from 1/1 to 6/1]											

1021-690

Current Workload and Staff Assigned

Should we be selected for this contract, **we commit that the individuals identified on our organizational chart will be available to the City.**

Hazen strives to maintain a well-balanced workload, which allows our staff to be appropriately allocated to projects, but not overly committed, so they have the ability to provide first-class service to our existing clients and the flexibility to take on new assignments and opportunities with our clients. To achieve these goals, Hazen has a conservative approach of only undertaking new assignments when workload permits and adequate staff is available to provide the complete range of services required, and for the expected duration of the project.

Our proposed Project Manager, **J. Philip Cooke, PE**, will maintain regular communications with the City. Through this communication, we will anticipate required resources and proactively plan staff assignments. Should unforeseen circumstances occur and project acceleration is required, our team has the support and backup staff at all levels with experience in all disciplines required. If additional resources are necessary to support our team, Hazen maintains sufficient staff in our nine Florida offices and has the capacity to draw upon our firm-wide staff members. We foresee adequate staff availability to work on these projects, and we are confident that all projects will be completed on schedule.

	2024	2025											
	Dec	Jan	Feb	Mar	Apr	May	Jun	Jul	Aug	Sep	Oct	Nov	Dec
City of Hollywood Wastewater Master Plan	█												
City of Hollywood Hydraulic Modeling Phase 2	█												
City of Hollywood Temporary Hypochlorite System	█												
City of Hollywood Reuse Master Plan Update	█												
City of Miramar Wastewater Master Plan	█	█											
City of Hollywood IW-2 Repair	█	█											
City of Hollywood Oxygen Generation System Evaluation	█	█											
City of Hollywood Lift Station W-27 (Design)	█	█	█										
City of Hollywood Bar Screen Bypass	█	█	█										
City of Sunrise Sawgrass WWTP DAF Thickening	█	█	█										
City of Hollywood RAS PS No. 1 Replacement	█	█	█										
City of Hallandale Beach RO Skid Addition	█	█	█	█									
Fort Lauderdale Tranche 2 Stormwater Phase 1	█	█	█	█									
City of Hollywood Clarifier No. 3 Repair CMS	█	█	█	█	█	█							
City of Deerfield Beach NF and RO Strainer Modifications	█	█	█	█	█	█	█						
City of Plantation East WTP Electrical Modifications	█	█	█	█	█	█	█	█					
City of Fort Lauderdale Owner's Representative Services	█	█	█	█	█	█	█	█	█	█	█	█	█
City of Hollywood SRWWTP Grit Removal Project	█	█	█	█	█	█	█	█	█	█	█	█	█
Broward County 9195 NRWWTP Phase III (5) Biological	█	█	█	█	█	█	█	█	█	█	█	█	█
Fort Lauderdale SE Isles Stormwater Improvements	█	█	█	█	█	█	█	█	█	█	█	█	█
City of Hollywood OFDB Odor Control System	█	█	█	█	█	█	█	█	█	█	█	█	█

1021-690

Firm’s Demonstrated Ability to Solve Complex Project Issues

The Hazen team has successfully assisted multiple local and national clients with resolving some of their most challenging issues, through projects for the Cities of Hollywood, Plantation, Fort Lauderdale, Miramar, and Boca Raton; and Broward, Miami-Dade, and Palm Beach Counties.

Our competence to achieve successful project completion is rooted in the wealth of our firm resources and expertise, especially those in Broward, Miami-Dade, and Southern Palm Beach Counties. We have 100+ employees in these three offices, and most of these employees are specialists in planning, design, and construction of water, wastewater, water supply, and infrastructure projects. Because of our local depth of talented professionals and specialists right here in your backyard, we will be able to help resolve your most complex project issues.

The following project spotlights provide examples of Hazen’s recent project successes where we have delivered value-added services to our clients (which were, in many cases, a cost savings).

Project Spotlight

City of Fort Lauderdale North and South Redundant Force Main Emergency Pipeline Procurement Projects

Fort Lauderdale, FL

The City of Fort Lauderdale Sewer Design and Implementation Program includes projects that were included in the Florida DEP Consent Order. These projects have strict deadlines with severe penalties for failure to meet those deadlines. A perfect example of a critical fast-track/expedited project under this contract is the design and construction of the North and South Redundant Force Main Emergency Pipeline Procurement Projects. These force mains, with a total length of approximately 36,900 feet, convey 75% of the City’s wastewater flow from the City’s largest re-pump station to the wastewater treatment plant crossing through the busiest portion of the City.

In December 2019, the City’s sewer transmission system experienced a series of pipe breaks that resulted in large volume sewer overflows. These breaks corroborated the results of the Force Main Condition Assessment previously submitted by Hazen to FDEP and evidenced the need to take urgent actions to replace the main pipes in the City. **The project’s original schedule was 49 months. The EPP approach reduced this time to 19 months.** During this emergency project, Hazen assembled a team of pipeline designers, hydraulic modelers, and construction managers to assist the City of Fort Lauderdale with the evaluation of potential alternatives, including the different routes for the new force main, construction technology, and the type of contract required to complete the project in record time. **Hazen also assisted the City in the expedited procedure to select the appropriate contractor for each project.**



Project Spotlight

SRWWTP Emergency Outfall Repair

City of Hollywood, FL

When a developer's geotechnical subcontractor punctured the ocean outfall for the SRWWTP, Hazen quickly responded on the City's behalf to the regulatory authorities and the emergency contractor. Hazen's team of engineers assisted the City by designing a comprehensive repair strategy, negotiating an emergency environmental response plan with both FDEP and Broward County, and developing a protective sampling plan to allow direct discharge of effluent to the Intracoastal Waterway, facilitating diver safety during the repair. Upon completion of the repairs, Hazen successfully dye tested the outfall to confirm the pipe's integrity and allow it to be placed back into service.



Project Spotlight

McKinley Street Interceptor

City of Hollywood, FL

The City of Hollywood's McKinley Street gravity interceptor involved installation of 7,000 linear feet of 66-inch pipe, which successfully kept line and grade through established neighborhoods, numerous underground utilities, and under both the FEC railroad and US 1/Federal Highway. Tie-in structures to existing large-diameter gravity interceptors, as shown in this photo, were a key component of this project and required extensive coordination with underground utilities. Hazen appreciates the complexities of pipeline corridor analysis, permitting activities, and community sensitivities. **The project successfully culminated with a tie-in at the plant while under full flow.**



Available Facilities, Technological Capabilities and Other Available Resources

Hazen has the personnel, resources, facilities, and equipment to perform and successfully complete this project. We have over 200 staff members located in our nine Florida offices and in-house expertise in all of the major disciplines noted in the RFQ. We also have the capacity to draw upon our 2,000+ firm-wide staff members, if necessary.

The Hazen team will leverage our experience **with a variety of technologies** to adapt to the City's preferences and project needs.



- Advanced Flow Technology (AFT) Fathom is “a fluid dynamic simulation software for engineers, used to calculate pressure drop and pipe flow distribution in liquid and low-velocity gas piping and ducting systems.”
- AFT provides a simple interface able to hide detailed design simply in select nodes.
- InfoWater Pro provides computer models for large flow network analysis.
- Hand calculations are best for simple systems and recommended for calculation spot checking.
- Advanced/Standard Spreadsheets provides easy QA/QC of formulas and can generate pre-developed graphics.



AUTODESK
BIM 360

Hazen CM Embraces the use of the BIM model.

- Facilitate coordination between the various project trades, i.e. electrical, piping, HVAC, equipment.
- Simulate critical and dangerous work activities. Can run various scenarios through the model to identify clashes, risks, and develop remedies.
- Creates a final as-built project record.



BLUEBEAM
REVU

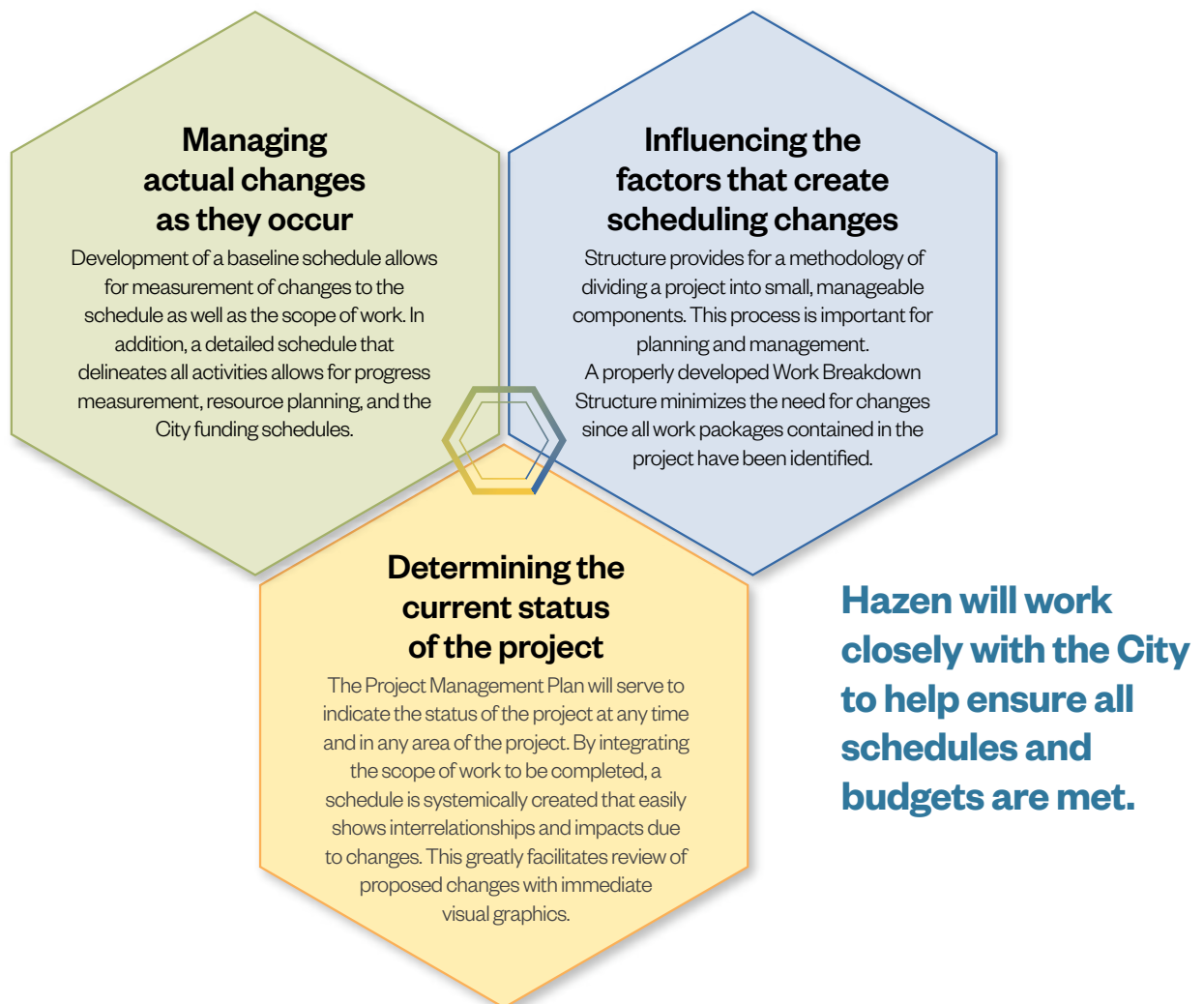
At Hazen, we run Bluebeam software on all devices (phones, tablets, and laptops).

- Provides instant access to details, shop drawings, RFIs, etc. through hyperlinks on the contract drawings. No need to open additional windows or carry extra documents.
- Invite all team members, at no additional cost, to collaborate concurrently on project issues using the same drawing.
- Creates redline drawings as work is installed, initiating close-out as the project progresses.

Scheduling Methodology (Timeline) for Effectively Managing and Executing Work in the Optimum Time

To ensure that schedules are met in accordance with the City’s time frame, schedules are developed immediately following the issuance of a notice to proceed for each assignment.

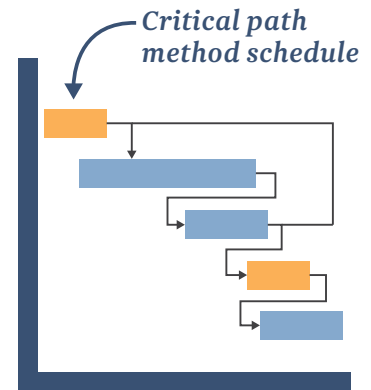
Hazen subscribes to the Project Management Institute’s approach for project management including areas such as planning, executing, monitoring and controlling, and close-out. For lengthy and complex projects, a detailed project schedule will be developed in Primavera or Microsoft Project. The project schedule details the steps required to complete the project utilizing a critical path methodology. Using scheduling software provides a time management tool to better track progress of the project in real time. These types of scheduling techniques are tailored to the complexity of the project and reporting preferences of our clients. **Our Project Manager, J. Philip Cooke, PE, will be responsible for ensuring that the overall schedule for each assignment is met.** We know that task assignments come in various shapes and sizes, and we adapt our delivery approach accordingly. All City of Hollywood projects will get the same focus and attention to detail. Hazen subscribes to a strong project manager approach where all lines of communication are via the project manager. **Mr. Cooke will be responsible for maintaining full knowledge of all aspects of the project.**



The key to successful projects is to develop a Project Management Plan (PMP), monitor the progress of the project in accordance with that plan, and adjust resources proactively before problems occur.

The PMP identifies all team members and their contact information, defines each team member’s responsibilities and budget assignments, includes a copy of the scope of work to define expectations, and provides a date-specific timeline for milestones and deliverable deadlines. Hazen project managers are trained to use the firm’s computerized, web-based tool (Deltek Vantagepoint) for project planning, monitoring, and reporting. By constantly monitoring progress, schedule, and budget, our project manager will proactively make any necessary adjustments to keep the work moving forward effectively and efficiently.

Hazen uses commonly available progress reporting/scheduling systems utilizing the critical path methodology to ensure up-to-date schedule techniques. The schedule details every element of the project, determines relationships between the various elements and their optimum sequence, and identifies and resolves coordination and acquisition problems before labor, materials, and facilities are committed. This unified project schedule and resource analysis is effectively maintained to ensure the projects progress on schedule and with minimal conflict.



Proactive management and working the critical path of a project **will ensure projects are delivered on time.**

Approach to Team Scalability to Support Various Projects Simultaneously

Project management time on projects that will be under way concurrently with the City’s project will vary depending on the size and complexity of the project. Typically, project management is emphasized throughout the project and especially at the beginning of the project when planning is critical.

Depending on the nature of the assignment, Mr. Cooke will appoint a Task Manager who will report directly to him. This division of labor will ensure that the Project Manager focuses on meeting the City’s schedule, budget, and quality expectations, while the Task Manager focuses on the day-to-day details of designing the project and coordinating the work of the design discipline and production teams. This will ensure that the City’s projects are prioritized at all times. Hazen has successfully used this approach in managing the design of other projects.

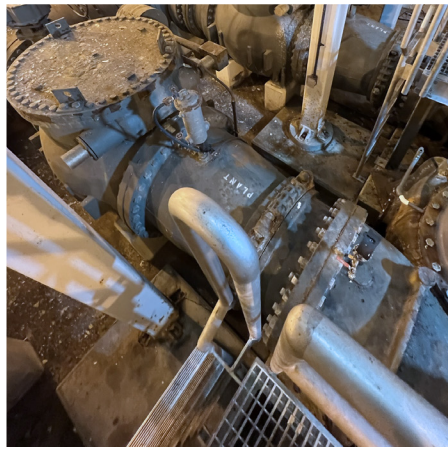
If a project requires additional personnel, Hazen offers an unparalleled depth of resources and an overlapping of technical disciplines so that personnel and resources will be available as required.

Hazen does not anticipate any challenges for City projects that will be managed concurrently with any other project. We offer a large experienced South Florida staff of technical and support personnel—many of whom are located in our Southeast regional headquarters in Hollywood—which provides a significant advantage to Hollywood in ensuring that resources are available to undertake any assignment.

TAB

F

Knowledge of the Site and Local Conditions



F Knowledge of the Site and Local Conditions

Hazen delivers complex projects in compliance with State, County, and City codes. Our expertise in low-elevation and hurricane-prone areas, and knowledge of permitting and safety protocols ensure resilient and high-quality results, even in challenging environments.

Knowledge of the site, State, County, and City requirements, codes, and ordinances

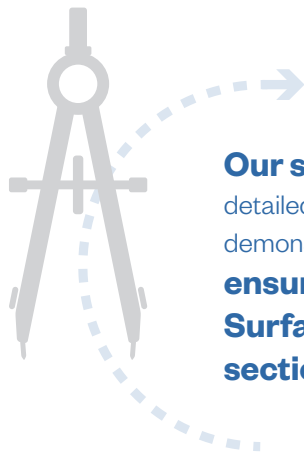
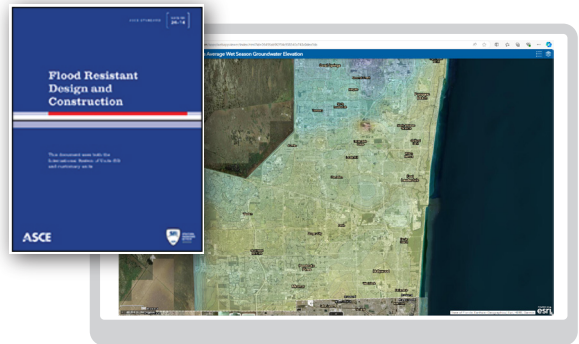
Hazen is an integral part of the economic and social fabric of Hollywood. Our Southeastern Regional Headquarters has been located here since 1968. Having partnered with Hollywood on many projects continuously since 1984, Hazen brings a profound understanding of the myriad issues facing the utility, as well as the historical context surrounding each issue.

Beyond the engineering cost savings, there are several benefits of continuing the Hazen-Hollywood partnership. Together, we have successfully anticipated and managed many of the most pressing regulatory issues of the times.

Our in-depth knowledge of the challenges facing the City of Hollywood allows us to bypass the learning curve, enabling us to **deliver efficient engineering solutions that save the City time and resources.**

Hazen designs all facilities based on ASCE 24-14 to be protected from flooding.

We design all facilities to comply with Broward County's Year 2060 Future Conditions Flood Map.

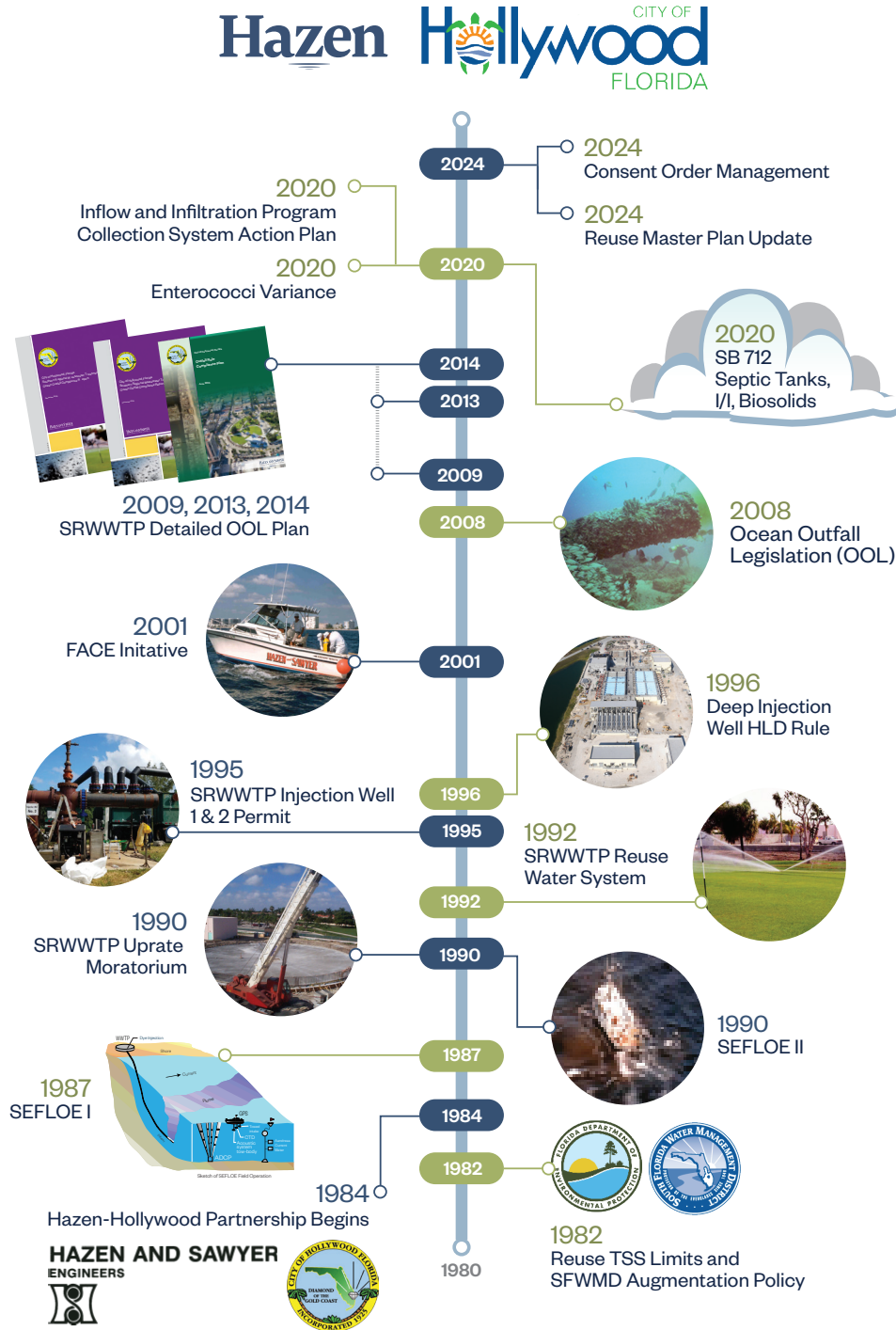


Our standard design approach includes a detailed table on the drawings documenting our calculations demonstrating compliance with ASCE 24-14. This approach **ensures rapid approval by Broward County Surface Water Management License section and the Building Department.**



Our structural design team uses ASCE 7-22 and the High-Velocity Hurricane Zones section of the Florida Building Code to account for minimum design wind loads in hurricane-prone regions.

Ensuring regulatory compliance for the City of Hollywood for five decades



Hazen's familiarity with regulatory changes over the past five decades has **helped the City maintain regulatory compliance over the years.**

Experience working in local areas impacted by low elevation lines and flooding, as well as areas prone to hurricanes force winds

Hazen has extensive experience delivering projects in coastal and low-lying areas that face unique challenges from low elevations and hurricane-prone conditions. Our team is skilled at designing resilient infrastructure that addresses storm surge, flooding, and high wind forces to protect critical assets and ensure long-term functionality. With a deep understanding of local topography and environmental risks, we develop tailored solutions that enhance community resilience and meet stringent regulatory requirements.

Hazen has influenced and managed sustainable, resilient infrastructure development in Florida and around the globe for over six decades.

Our approach demonstrates our expertise in evaluating and preparing for the possible effects of climate uncertainty. Our climate adaptation strategies concentrate on maintaining the highest level of protection for our communities at a sustainable investment rate.

Climate Resilience Toolkit

Steps to Resilience

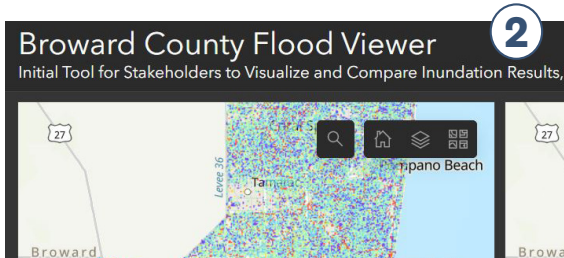


Vulnerability considers what assets are most susceptible to threats.
Risk considers the consequences of threats to assets most likely to be affected.



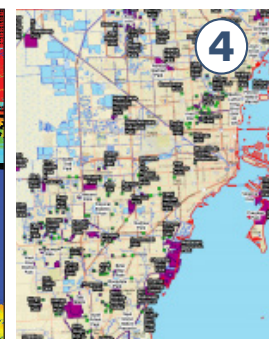
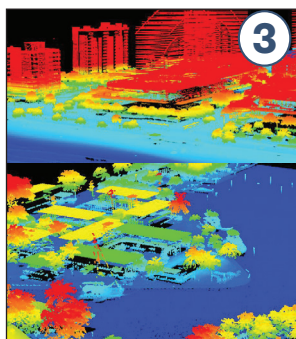
1. City of Hollywood Citywide Vulnerability Assessment and Adaptation Plan

Hazen conducted a citywide climate change vulnerability assessment, prioritizing vulnerabilities, developing adaptation strategies, creating an adaptation plan, informing the public about risks and adaptation opportunities and building the capacity of the City to include climate change data in decision making.



2. Broward County Countywide Risk Assessment and Resilience Plan

Hazen is providing an actionable resilience plan that consists of a detailed hydrologic (stormwater) model, robust economic model, visualization platform (to aid regional planning and project tracking), and a written plan to provide the foundation for collective mitigation of future flooding throughout the County.



3. City of Fort Lauderdale Stormwater Master Plan Modeling and Design Implementation Services

Hazen is Program Manager for a new stormwater master plan and implementation of designs to address chronic flooding & other stormwater management issues.

4. Miami-Dade WASD Rapid Action Plan

Hazen developed methodology to establish criticality and vulnerability rankings of Broward County facilities based on flood potential under current and future conditions.

1021-690

Knowledge of local subcontractors and suppliers, capable of supplying quality workmanship and materials

In reference to the City's response to questions posted online, knowledge of local subcontractors and suppliers is not applicable to this project.

Knowledge of local permitting agencies, procedures, and testing protocols

Hazen has in-depth familiarity with the regulatory and permitting agencies (and their procedures) that regulate wastewater treatment and disposal in South Florida. We maintain excellent relationships with policy makers and many of the state, county, and local permitting agencies (which includes adjacent utility permitting agencies and municipalities) and understand the requirements associated for each permit application for facilitation of a smooth process. These relationships are built from years working almost exclusively in the water and wastewater industry, and the long tenures of our team's professionals working in South Florida.

Regulatory compliance is a critical part of what we do in this industry, and part of that compliance involves proper documentation and reporting. Hazen has been integrally involved in the development of regulatory compliance reports, data gathering, and keeping processes which inform and help streamline reporting. **Hazen has experience permitting projects through agencies with jurisdiction over the SRWWTP.** We have years of experience working with the Florida Department of Environmental Protection (FDEP), Broward County Resilient Environment Department (BCRED), and the City of Hollywood Development Services Building Division.

Our Permitting Lead, **Monique Durand, PE**, has experience providing design through permitting services for the City of Hollywood and served as an in-house consultant for the City of Hollywood's Utilities Department. In addition, our Project Manager, **J. Philip Cooke, PE**, has facilitated numerous environmental resource, industrial wastewater, domestic wastewater, and construction permits for federal, state, and local regulatory agencies including the US Army Corps of Engineers, US Coast Guard, FDEP, South Florida Water Management District, Florida Department of Health, Miami-Dade County, Broward County, and others. His extensive experience comprises the development and approval of various plans of study for wastewater treatment, facility permit renewals, wastewater treatment plant expansion permits (major modification), paper updates, industrial pretreatment permitting, discharge variances, mixing zones, environmental resource permitting, and injection well permits (construction and mechanical integrity testing).

Our experience encompasses Federal, State, County, and municipal permitting requirements through projects in the water, wastewater, conveyance, and reuse realms.

We have prepared permit applications for new facilities and pipelines, as well as renewals and modifications. In addition to permitting, Hazen has worked closely with many of our clients to develop operational tools that can be used to track monitoring and permit requirements, which can be added to computerized maintenance management systems.



Having already worked on many City of Hollywood projects, **Hazen understands the importance of scheduling and sequencing permit reviews in order to obtain all comments in a timely fashion.** This allows the City to bid projects with confidence that regulatory driven change orders will not be an issue.

Experience working on projects with complex logistical challenges, including occupied facilities, public safety, and other safety considerations

For the Influent Pump Station Upgrades project, major considerations during design include maintaining full operability of the SRWWTP and ensuring the safety of City staff, including operations personnel, throughout the entire duration of construction and startup. Hazen has a cost-effective approach for maintaining plant operations at all times while considering the critical role that City staff play in continued permit compliance. Hazen has faced numerous similar challenges at treatment plants and master pump stations all around the South Florida area.

Currently, Hazen and its team of subconsultants are working on the North Regional Wastewater Treatment Plant Facilities Improvements Program for Broward County Water and Wastewater Services. This Program includes numerous renewal and replacement projects for a number of unit processes, including the grit removal system, influent screening, injection well pump station, ocean outfall pump station, dissolved air flotation, digesters, centrifuges and belt filter presses, sludge feed pumps, WAS pumps, RAS pumps, and scum pumps. **These projects are designed with maintenance of plant operations in mind—no interruption of service or plant treatment capacity is required, no matter how complicated the required upgrades.** Construction areas are clearly designated with restricted access to members of the construction team only. Full access is provided to plant operations personnel where required. Strict safety procedures are followed at all times, including requirements for personal protection equipment in designated areas.

Hazen has implemented similar detailed planning and coordination strategies at other construction sites around South Florida. This early attention to detail minimizes service disruption, ensuring smooth operations and maximizing safe working environments for all.

Other recent projects where we have leveraged our proven approach to risk management and safety protocols included the City of Miramar Wastewater Reclamation Facility Phase I Expansion, the City of Hollywood SRWWTP RAS Pump Station No. 2 Replacement, and the City of Fort Lauderdale Southeast Isles Seawall Replacements on Las Olas Boulevard.



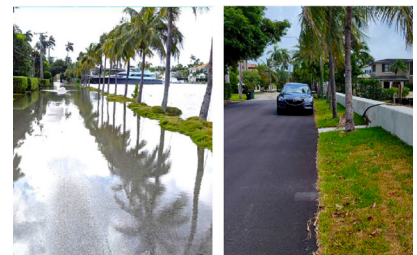
City of Miramar Wastewater Reclamation Facility

- Active wastewater reclamation facility – no interruption of service to existing facilities
- Designated construction area with continued, safe access of plant operations personnel



City of Hollywood SRWWTP RAS Pump Station No. 2 Replacement

- Active wastewater treatment plant – no interruption to plant treatment capacity
- Designated construction area with continued, safe access to plant operations personnel



City of Fort Lauderdale SE Isles Seawall Replacement

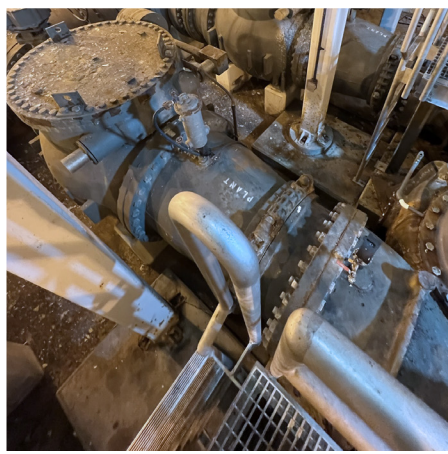
- Construction of new seawalls while maintaining existing seawalls in service
- Construction in high-traffic, public corridor while maintaining high safety standards for residents and visitors

Hazen's attention to detail minimizes service disruption, **ensuring smooth operations and maximizing safe working environments for all.**

TAB



References - Vendor Reference Forms



References - Vendor Reference Forms

The Hazen team is proud of its proven success at meeting the goals and objectives of its clients. Our past record of similar accomplishments is extensive.

The references below may be contacted by the City of Hollywood during the evaluation phase as validation of our excellent performance record on projects of similar size, scope, and complexity that have been completed by Hazen within the last five years. Completed Vendor Reference Forms are included at the end of this section, and detailed project descriptions are included in Section C – Firm Qualifications and Experience.

Reference 1			
Project Name/Status	Client Name/ Address	Contact Person	Project Details
City of Homestead - Influent Pump Station and Gravity Interceptor Project Status: The influent pump station was successfully completed in 2019.	City of Homestead 551 SE 8th Street Homestead, FL 33030	Eduardo Gonzalez Assistant Director of Operations 305.224.4786 egonzalez@homesteadfl.gov	Project Amount (construction): \$8 million

Description of Work

Hazen proposed the elimination of PS 1, which would allow the transfer of flow from the western portion of the city to the WWTP via gravity. To support this, a new influent pump station (IPS) was constructed at the WWTP. Hazen designed a new influent pump station (IPS) which featured a divided wet well, housing three pumps for delivering wastewater to the WWTP and three pumps for transferring peak flow to the WASD force main system. The pumps were equipped with variable frequency drives (VFDs) and a standby generator capable of operating the station for a minimum of 72 hours under full load. Instrumentation elements allowed direct monitoring and control of the IPS from the WWTP HMI. Hazen also installed a 36-inch gravity main with a stub out to eliminate PS 21. Two wet wells were converted to manholes to allow wastewater to pass through into the gravity interceptor leading to the IPS. Hazen managed the entire project, from design to construction oversight, ensuring compliance with permits and coordinating with regulatory agencies. The IPS was successfully completed in 2019, delivering a steady flow of 5.0 mgd to the WWTP and resolving the moratorium and runtime issues. The project improved wastewater management and enabled the City to overcome development restrictions in the western portion of the City.

Reference 2

Project Name/Status	Client Name/ Address	Contact Person	Project Details
<p>Broward County – North Regional Wastewater Treatment Plant (NRWWTP) Facility Improvements</p> <p>Project Status:</p> <p>2014-Present. Some parts of this project have been completed. See below:</p> <p>Fast Track (Phase III (1)): Design complete, currently in construction.</p> <p>Effluent (Phase III (6) and Phase IV (6)): Design and Construction complete.</p> <p>Solids (Phase III (3)): Design complete, currently in construction.</p> <p>Biological (Phase III (5)): Design complete, Preparing for Bid.</p>	<p>Broward County Water and Wastewater Services 2555 W. Copans Road Pompano Beach, FL 33069</p>	<p>Mark Darmanin Director, Water and Wastewater Operations Division 954.831.0960 mdarmanin@broward.org</p>	<p>Project Amount (construction):</p> <p>Effluent: \$10.8 million</p> <p>Solids: \$56 million</p> <p>Biological/Ancillary: \$32 million (est.)</p> <p>Grit: \$29 million</p>

Description of Work

Hazen conducted risk and condition assessments, process evaluation, capital improvement planning, and design-to-construction services for Broward County’s North Regional WWTP. The project included upgrades to grit removal (Eutek Headcell, boilers, blowers, fuel tanks, 54” influent pipe), effluent systems (liquid rheostats, VFDs, chillers), biological systems (RAS/WAS pumps, flow meters), solids handling (centrifuges, belt filter presses, DAF thickeners, digester cover), and ancillary systems (lighting, paging, site improvements). It was phased to address immediate needs while planning for long-term improvements. See below for more information on specific elements relevant to this contract.

Phase III (6) and Phase IV (6) – Effluent: The Phase III(6) and Phase IV(6) – Effluent project included upgrades to the aging outfall pump station and injection well pump station at the 95-mgd NRWWTP. Hazen provided design, permitting, construction management, and construction engineering services. This multifaceted project was divided into several phases, including risk and security assessment, condition assessment, facilities planning, facilities design, engineering services during construction, and regulatory assistance.

Phase III (3) – Solids (>50 mgd): The project includes replacing dissolved air flotation pumps, four floating digester covers, one gas holding cover, and installing five digester gas mixing systems. Two centrifuges and two belt filter presses, each with grinders, sludge feed pumps, variable frequency drives, polymer units, and ancillary equipment, will be installed, while three existing belt filter presses will be removed. Electrical and instrumentation systems, including MCCs and PLCs, will also be replaced.

Phase III (5) Biological/Ancillary: The project included replacement of twelve (12) RAS pumps, sixteen (16) WAS pumps, eight (8) scum pumps, the associated piping, and sixteen (16) RAS flow control valves for each clarifier. The project also includes replacement or addition of a RAS pump station discharge flow meter and vault; replacement of facility influent flow meters; RAS pump station HVAC units; Modifications to Module C aeration basin drain line; and renovations to the Secondary Treatment Observation Building (STOB) at Module B. A new paging system is also planned.

Reference 3			
Project Name/Status	Client Name/Address	Contact Person	Project Details
City Fort Lauderdale Stormwater Improvements - River Oaks Pump Stations Project Status: 2016-Present (design complete, substantial construction completion scheduled for 12/2024).	City of Fort Lauderdale Public Works I Engineering 100 N. Andrews Avenue Fort Lauderdale, FL 33301	Rares Petrica, PE Senior Project Manager 954.828.7150 RPetrica@fortlauderdale.gov	Project Amount (Construction) : \$10.3 million

Description of Work

Hazen developed a \$200 million Capital Improvements Plan for urgent resilience infrastructure as part of the City of Fort Lauderdale’s 2016 Stormwater Master Plan update. The Capital Improvement Plan included eight stormwater pump stations throughout the City. The River Oaks Neighborhood was identified as a high priority for project implementation. This project includes an inlet pump station (13 mgd), an outfall pump station (82 mgd), an electrical building, and an emergency generator and includes considerations for future sea level rise and incorporates Broward County 2060 100-year flood elevations. This project includes much of the same team proposed for the Influent Pump Station Upgrades, including Craven Thompson Associates and the geotechnical engineering team.

Reference 4			
Project Name/Status	Client Name/Address	Contact Person	Project Details
Miami-Dade Water and Sewer Department (WASD) - North District Wastewater Treatment Plant (NDWWTP) Electrical Distribution Building No. 3 Project Status: Design and permitting 01/2022 - 10/2024. Currently in Bidding Phase	Miami-Dade Water and Sewer Department 3575 S Le Jeune Rd. Miami, FL 33133	Nelson Perez-Jacome, PE Assistant Director, Utility Engineering 786.552.4420 nelson.perez-jacome@miamidade.gov	Project Amount (Construction): \$157 million (est.)

Description of Work

Hazen is currently providing design and engineering services for the construction of Electrical Distribution Building No. 3 (EDB 3). This state-of-the-art facility will replace the existing Electrical Distribution Building No. 1 and provide WASD a more resilient and hardened facility. This new facility will be designed to be more resilient to storm surge and sea level rise, and have an Incident Command Center (ICC) to provide a safe area for WASD staff to operate the NDWWTP during hurricanes. One of the first tasks Hazen completed was the preparation of the Power Distribution Plan (PDP). This plan presented a conceptual overall site power distribution and included an updated list of electrical loads that will be connected to EDB 3. Hazen also evaluated this project via the Pre-Assessment Envision® Checklist and recommended to WASD the Envision® components that could be incorporated into the EDB 3 design.

Reference 5

Project Name/Status	Client Name/Address	Contact Person	Project Details
City of Miramar - Wastewater Reclamation Facility Reuse Phase I Expansion to 7.5 mgd Project Status: Design and construction completed (2021).	City of Miramar Utilities Department 13900 Pembroke Road Miramar, FL 33027	Francois Domond, PE Director of Utilities Department 954.883.6813 fdomond@miramarfl.gov	Project Amount (Construction): \$5.5 million

Description of Work

Hazen assisted the City in obtaining a paper uprating of existing facilities from 4 mgd to 5 mgd in late 2017. The Reclaimed Water Expansion Phase I project included expansion of the existing 5-mgd reclaimed water treatment and distribution system to 7.5 mgd.

New facilities included two filter feed pumps, sand filters, expansion of the existing sodium hypochlorite disinfection system, a ground storage tank, and upgrades to the high service pumping system. This project included detailed design, permitting, bidding, construction administration and inspection services. This project includes many of the same team members that are proposed for the Influent Pump Station Upgrades, including Craven Thompson and Associates.

FORM 4

VENDOR REFERENCE FORM

City of Hollywood

Solicitation #:

RFQ-238-24-JJ

Reference for:

Hazen and Sawyer

Organization/Firm Name providing reference:

City of Homestead, Florida

Organization/Firm Contact

Title:

Name:

Eduardo Gonzalez

Asst. Director - Operations

Email:

egonzalez@homesteadfl.gov

Phone: 305.224.4786

Name of Referenced Project:

IPS and Gravity Interceptor

Contract No:

2015-05

Date Services were provided:

2014-2019

Project

Amount: \$8 million

Referenced Vendor's role in Project:

Prime Vendor

**Subcontractor/
Subconsultant**

Would you use the Vendor again?

Yes

No. Please specify in additional comments

Description of services provided by Vendor (provide additional sheet if necessary):

The City of Homestead undertook a project to address wastewater collection challenges by eliminating a key pump station and implementing a gravity-based solution. The project involved installing a 36-inch gravity main from PS 1 to the WWTP and providing a stub-out to PS 21, allowing its elimination. Construction of the gravity system occurred in 2014-2015, with the IPS awarded in 2016. The IPS features multiple submersible pumps, screening channels, and a divided wet well with emergency isolation capabilities.

Please rate your experience with the Vendor	Need Improvement	Satisfactory	Excellent	Not Applicable
Vendor's Quality of Service				
a. Responsive	<input type="checkbox"/>	<input type="checkbox"/>	<input checked="" type="checkbox"/>	<input type="checkbox"/>
b. Accuracy	<input type="checkbox"/>	<input type="checkbox"/>	<input checked="" type="checkbox"/>	<input type="checkbox"/>
c. Deliverables	<input type="checkbox"/>	<input type="checkbox"/>	<input checked="" type="checkbox"/>	<input type="checkbox"/>
Vendor's Organization:				
a. Staff expertise	<input type="checkbox"/>	<input type="checkbox"/>	<input checked="" type="checkbox"/>	<input type="checkbox"/>
b. Professionalism	<input type="checkbox"/>	<input type="checkbox"/>	<input checked="" type="checkbox"/>	<input type="checkbox"/>
c. Staff turnover	<input type="checkbox"/>	<input type="checkbox"/>	<input type="checkbox"/>	<input checked="" type="checkbox"/>
Timeliness/Cost Control of:				
a. Project	<input type="checkbox"/>	<input type="checkbox"/>	<input checked="" type="checkbox"/>	<input type="checkbox"/>
b. Deliverables	<input type="checkbox"/>	<input type="checkbox"/>	<input checked="" type="checkbox"/>	<input type="checkbox"/>

Additional Comments (provide additional sheet if necessary):

--

******THIS SECTION FOR CITY USE ONLY******

Verified via:	Email:	<input type="checkbox"/>	Verbal:	<input type="checkbox"/>	Mail:	<input type="checkbox"/>
Verified by:	Name:				Title:	
	Department:				Date:	

FORM 4

VENDOR REFERENCE FORM

City of Hollywood

Solicitation #:

RFQ-238-24-JJ

Reference for:

Hazen and Sawyer

Organization/Firm Name providing reference:

Broward County, Florida

Organization/Firm Contact Name:

Mark Darmanin

Title: Director, Water and Wastewater Operations Division

Email:

mdarmanin@broward.org

Phone: 954-831-0960

Name of Referenced Project:

North Regional WWTP Facility Improvements

Contract No: RLI R1007402R1

Date Services were provided:

2014-Ongoing

Project Amount: Grit: \$29 million; Effluent: \$10.8 million; Solids: \$56 million; Biological: \$30 million (est.) Ancillary/Civil: \$5 million (est)

Referenced Vendor's role in Project:

Prime Vendor

Subcontractor/ Subconsultant

Would you use the Vendor again?

Yes

No. Please specify in additional comments

Description of services provided by Vendor (provide additional sheet if necessary):

Hazen performed risk assessment, condition assessment, process evaluation, capital improvement planning and design through construction services for: Fast Track Grit (grit removal via Eutek Headcell, boilers, blowers, fuel tanks, 54" influent pipe replacement), Effluent (liquid rheostats, variable frequency drives, chillers), Biological (RAS pumps, WAS pumps, 54" influent flow meters), Solids (centrifuges, belt filter presses, odor control, dissolved air flotation thickeners rehabilitation, digester cover replacement), and Ancillary (lighting and paging system, site improvements) at Broward County's North Regional WWTP. The project was phased to plan for long term improvements while designing and constructing the immediate need improvements. See additional sheet for more information on specific elements relevant to this contract.

Please rate your experience with the Vendor	Need Improvement	Satisfactory	Excellent	Not Applicable
Vendor's Quality of Service				
a. Responsive	<input type="checkbox"/>	<input type="checkbox"/>	<input checked="" type="checkbox"/>	<input type="checkbox"/>
b. Accuracy	<input type="checkbox"/>	<input type="checkbox"/>	<input checked="" type="checkbox"/>	<input type="checkbox"/>
c. Deliverables	<input type="checkbox"/>	<input type="checkbox"/>	<input checked="" type="checkbox"/>	<input type="checkbox"/>
Vendor's Organization:				
a. Staff expertise	<input type="checkbox"/>	<input type="checkbox"/>	<input checked="" type="checkbox"/>	<input type="checkbox"/>
b. Professionalism	<input type="checkbox"/>	<input type="checkbox"/>	<input checked="" type="checkbox"/>	<input type="checkbox"/>
c. Staff turnover	<input type="checkbox"/>	<input type="checkbox"/>	<input type="checkbox"/>	<input checked="" type="checkbox"/>
Timeliness/Cost Control of:				
a. Project	<input type="checkbox"/>	<input type="checkbox"/>	<input type="checkbox"/>	<input checked="" type="checkbox"/>
b. Deliverables	<input type="checkbox"/>	<input type="checkbox"/>	<input type="checkbox"/>	<input checked="" type="checkbox"/>

Additional Comments (provide additional sheet if necessary):

There are a number of projects listed in this evaluation many of which are ongoing.

******THIS SECTION FOR CITY USE ONLY******

Verified via:	Email:	<input type="checkbox"/>	Verbal:	<input type="checkbox"/>	Mail:	<input type="checkbox"/>
Verified by:	Name:				Title:	
	Department:				Date:	

Description of Services Provided by Vendor:

Phase III (6) and Phase IV (6) – Effluent: The Phase III(6) and Phase IV(6) – Effluent project included upgrades to the aging outfall pump station and injection well pump station at the 95-mgd NRWTP. Hazen provided design, permitting, construction management, and construction engineering services. This multifaceted project was divided into several phases, including risk and security assessment, condition assessment, facilities planning, facilities design, engineering services during construction, and regulatory assistance.

Phase III (3) – Solids (>50 mgd): The existing solids treatment facilities at the NRWTP— comprising biosolids thickening, stabilization, and dewatering — require upgrades to ensure continuous operations. The project includes replacing dissolved air flotation pumps, four floating digester covers, one gas holding cover, and installing five digester gas mixing systems. Two centrifuges and two belt filter presses, each with grinders, sludge feed pumps, variable frequency drives, polymer units, and ancillary equipment, will be installed, while three existing belt filter presses will be removed. The County will evaluate belt filter press and centrifuge performance before making long-term decisions. Electrical and instrumentation systems, including MCCs and PLCs, will also be replaced.

Phase III (5) Biological: The project included replacement of twelve (12) RAS pumps, sixteen (16) WAS pumps, eight (8) scum pumps, the associated piping, and sixteen (16) RAS flow control valves for each clarifier.

The project also includes replacement or addition of a RAS pump station discharge flow meter and vault; replacement of facility influent flow meters; RAS pump station HVAC units; Modifications to Module C aeration basin drain line; and renovations to the Secondary Treatment Observation Building (STOB) at Module B.

FORM 4

VENDOR REFERENCE FORM

City of Hollywood

Solicitation #:

RFQ-238-24-JJ

Reference for:

Hazen and Sawyer

Organization/Firm Name providing reference:

City of Fort Lauderdale, Florida

Organization/Firm Contact Name:

Rares Petrica, PE

Title:

Senior Project Manager

Email:

RPetrica@fortlauderdale.gov

Phone:

954.828.7150

Name of Referenced Project:

City Fort Lauderdale Stormwater Improvements - River Oaks Pump Stations

Contract No:

256-11660

Date Services were provided:

2016 - Ongoing (In Construction)

Project Amount:

\$10.3 million

Referenced Vendor's role in Project:

Prime Vendor

**Subcontractor/
Subconsultant**

Would you use the Vendor again?

Yes

No. Please specify in additional comments

Description of services provided by Vendor (provide additional sheet if necessary):

Hazen developed a \$200 million Capital Improvements Plan for urgent resilience infrastructure as part of the City of Fort Lauderdale's 2016 Stormwater Master Plan update. The Capital Improvement Plan included eight stormwater pump stations throughout the City. The River Oaks Neighborhood was identified as a high priority for project implementation. This project includes an inlet pump station (13 mgd), an outfall pump station (82 mgd), an electrical building, and an emergency generator. The project includes considerations for future sea level rise and incorporates Broward County 2060 100-year flood elevations. This project includes much of the same team proposed for the Influent Pump Station Upgrades, including Craven Thompson Associates and the geotechnical engineering team.

Please rate your experience with the Vendor	Need Improvement	Satisfactory	Excellent	Not Applicable
Vendor's Quality of Service				
a. Responsive	<input type="checkbox"/>	<input type="checkbox"/>	<input checked="" type="checkbox"/>	<input type="checkbox"/>
b. Accuracy	<input type="checkbox"/>	<input type="checkbox"/>	<input checked="" type="checkbox"/>	<input type="checkbox"/>
c. Deliverables	<input type="checkbox"/>	<input type="checkbox"/>	<input checked="" type="checkbox"/>	<input type="checkbox"/>
Vendor's Organization:				
a. Staff expertise	<input type="checkbox"/>	<input type="checkbox"/>	<input checked="" type="checkbox"/>	<input type="checkbox"/>
b. Professionalism	<input type="checkbox"/>	<input type="checkbox"/>	<input checked="" type="checkbox"/>	<input type="checkbox"/>
c. Staff turnover	<input type="checkbox"/>	<input type="checkbox"/>	<input checked="" type="checkbox"/>	<input type="checkbox"/>
Timeliness/Cost Control of:				
a. Project	<input type="checkbox"/>	<input type="checkbox"/>	<input checked="" type="checkbox"/>	<input type="checkbox"/>
b. Deliverables	<input type="checkbox"/>	<input type="checkbox"/>	<input checked="" type="checkbox"/>	<input type="checkbox"/>

Additional Comments (provide additional sheet if necessary):

The team is highly professional and skilled, with excellent expertise and timely delivery of results.

******THIS SECTION FOR CITY USE ONLY******

Verified via:	Email:	<input type="checkbox"/>	Verbal:	<input type="checkbox"/>	Mail:	<input type="checkbox"/>
Verified by:	Name:				Title:	
	Department:				Date:	

FORM 4

VENDOR REFERENCE FORM

City of Hollywood

Solicitation #: RFQ-238-24-JJ


Reference for: Hazen and Sawyer

Organization/Firm Name providing reference:

City of Miramar, Florida

Organization/Firm Contact

Name:

Francois Domond, PE ^{DS} 

Title:

Director of Utilities Department

Email:

fdomond@miramarfl.gov

Phone:

954.883.6813

Name of Referenced Project:

Wastewater Reclamation Facility Reuse Phase I Expansion to 7.5 mgd

Contract No:

1241

Date Services were provided:

2017-2021

Project

Amount:

\$5.5 million

Referenced Vendor's role in Project:

Prime Vendor

**Subcontractor/
Subconsultant**

Would you use the Vendor again?

Yes

No. Please specify in additional comments

Description of services provided by Vendor (provide additional sheet if necessary):

Hazen assisted the City in obtaining a paper uprating of existing facilities from 4 mgd to 5 mgd in late 2017. The Reclaimed Water Expansion Phase I project included expansion of the existing 5-mgd reclaimed water treatment and distribution system to 7.5 mgd. New facilities included two filter feed pumps, sand filters, expansion of the existing sodium hypochlorite disinfection system, a ground storage tank, and upgrades to the high service pumping system. This project included detailed design, permitting, bidding, construction administration and inspection services. This project includes many of the same team members that are proposed for the Influent Pump Station Upgrades, including Craven Thompson and Associates.

Please rate your experience with the Vendor	Need Improvement	Satisfactory	Excellent	Not Applicable
Vendor's Quality of Service				
a. Responsive	<input type="checkbox"/>	<input type="checkbox"/>	<input checked="" type="checkbox"/>	<input type="checkbox"/>
b. Accuracy	<input type="checkbox"/>	<input type="checkbox"/>	<input checked="" type="checkbox"/>	<input type="checkbox"/>
c. Deliverables	<input type="checkbox"/>	<input type="checkbox"/>	<input checked="" type="checkbox"/>	<input type="checkbox"/>
Vendor's Organization:				
a. Staff expertise	<input type="checkbox"/>	<input type="checkbox"/>	<input checked="" type="checkbox"/>	<input type="checkbox"/>
b. Professionalism	<input type="checkbox"/>	<input type="checkbox"/>	<input checked="" type="checkbox"/>	<input type="checkbox"/>
c. Staff turnover	<input type="checkbox"/>	<input type="checkbox"/>	<input checked="" type="checkbox"/>	<input type="checkbox"/>
Timeliness/Cost Control of:				
a. Project	<input type="checkbox"/>	<input type="checkbox"/>	<input checked="" type="checkbox"/>	<input type="checkbox"/>
b. Deliverables	<input type="checkbox"/>	<input type="checkbox"/>	<input checked="" type="checkbox"/>	<input type="checkbox"/>

Additional Comments (provide additional sheet if necessary):

--

******THIS SECTION FOR CITY USE ONLY******

Verified via:	Email:	<input type="checkbox"/>	Verbal:	<input type="checkbox"/>	Mail:	<input type="checkbox"/>
Verified by:	Name:				Title:	
	Department:				Date:	

FORM 4

VENDOR REFERENCE FORM

City of Hollywood

Solicitation #: RFQ-238-24-JJ

Reference for: Hazen and Sawyer

Organization/Firm Name providing reference:

Miami-Dade County, Florida

Organization/Firm Contact

Name:

Nelson Perez-Jacome, PE

Title: Assistant Director,
Utility Engineering

Email:

nelson.perez-jacome@miamidade.gov

Phone: 786-552-4420

Name of Referenced Project:

Miami-Dade Water and Sewer
Department North District Wastewater
Treatment Plant Electrical
Distribution Building No. 3

Contract No: 20HASPC002

Date Services were provided:

Design and permitting 01/2022 - 10/2024. Currently in Bidding Phase

Project

Amount: \$157 million (est.)

Referenced Vendor's role in Project:

Prime Vendor

**Subcontractor/
Subconsultant**

Would you use the Vendor again?

Yes

No. Please specify in additional comments

Description of services provided by Vendor (provide additional sheet if necessary):

Hazen is currently providing design and engineering services for the construction of Electrical Distribution Building No. 3 (EDB 3). This state-of-the-art facility will replace the existing Electrical Distribution Building No. 1 and provide WASD a more resilient and hardened facility. This new facility will be designed to be more resilient to storm surge and sea level rise, and have an Incident Command Center (ICC) to provide a safe area for WASD staff to operate the NDWWTP during hurricanes. One of the first tasks Hazen completed was the preparation of the Power Distribution Plan (PDP). This plan presented a conceptual overall site power distribution and included an updated list of electrical loads that will be connected to EDB 3. Hazen also evaluated this project via the Pre-Assessment Envision@ Checklist and recommended to WASD the Envision@ components that could be incorporated into the EDB 3 design.

Please rate your experience with the Vendor	Need Improvement	Satisfactory	Excellent	Not Applicable
Vendor's Quality of Service				
a. Responsive	<input type="checkbox"/>	<input type="checkbox"/>	<input checked="" type="checkbox"/>	<input type="checkbox"/>
b. Accuracy	<input type="checkbox"/>	<input type="checkbox"/>	<input checked="" type="checkbox"/>	<input type="checkbox"/>
c. Deliverables	<input type="checkbox"/>	<input type="checkbox"/>	<input checked="" type="checkbox"/>	<input type="checkbox"/>
Vendor's Organization:				
a. Staff expertise	<input type="checkbox"/>	<input type="checkbox"/>	<input checked="" type="checkbox"/>	<input type="checkbox"/>
b. Professionalism	<input type="checkbox"/>	<input type="checkbox"/>	<input checked="" type="checkbox"/>	<input type="checkbox"/>
c. Staff turnover	<input type="checkbox"/>	<input type="checkbox"/>	<input checked="" type="checkbox"/>	<input type="checkbox"/>
Timeliness/Cost Control of:				
a. Project	<input type="checkbox"/>	<input type="checkbox"/>	<input checked="" type="checkbox"/>	<input type="checkbox"/>
b. Deliverables	<input type="checkbox"/>	<input type="checkbox"/>	<input checked="" type="checkbox"/>	<input type="checkbox"/>

Additional Comments (provide additional sheet if necessary):

Performed work that exceeded the Department's expectations. Highly responsive to the Department's needs. Adapted to owner requested changes in scope without impact to engineering budget.

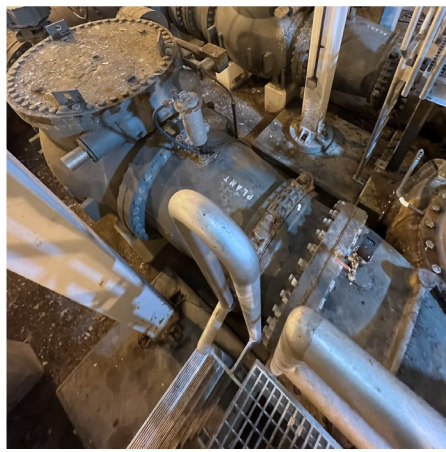
******THIS SECTION FOR CITY USE ONLY******

Verified via:	Email:	<input type="checkbox"/>	Verbal:	<input type="checkbox"/>	Mail:	<input type="checkbox"/>
Verified by:	Name:				Title:	
	Department:				Date:	

TAB



Subconsultant Information



H Subconsultant Information

Hazen has formed a dedicated team of subconsultants with whom we have built strong working relationships.



Role: Topographic Survey (if required)

Craven Thompson & Associates (CTA) is a multi-disciplinary consulting firm that combines their expertise in surveying, civil engineering, land planning, and landscape architecture to creatively solve the challenges of their public and private clients. CTA has been providing surveying services to the City of Hollywood since 1995, with continuous support since 2009. Additionally, CTA has partnered with Hazen for the past 25 years.



Role: Geotechnical Services (if required)

Wirx Engineering, LLC (WIRX) formerly known as WIRX Engineering & Construction, LLC, is a Professional Geotechnical Engineering Firm with offices in Broward and Palm Beach Counties. WIRX and its owners have worked with Hazen for over 15 years on various pursuits throughout Broward County and its associated cities. The firm's senior geotechnical and materials engineering staff have been closely involved with dozens of projects with Hazen and have supported their team on numerous City and Broward County Continuing Service Contracts. WIRX Engineering is a certified SBE, DBE, CBE, and MBE Professional Engineering Firm.



Role: Lead Paint & Asbestos Survey (required for permitting)

Gallagher Bassett Technical Services (GBTS) provides professional risk management, loss control, and site safety services including lead paint and asbestos survey. The firm has worked with Hazen since 1990 on many different types of facilities testing, and has completed several projects in the City of Hollywood.



Role: HVAC Design

METCO Southeast, LLC, has established a well-earned reputation for delivering complex design engineering solutions that address the needs of the most challenging engineering projects, including heating and ventilation systems. The firm has worked with Hazen for over 10 years on several Broward County wastewater treatment plant projects, and is currently providing HVAC Design services for a Fine Bubble project at the North Regional Wastewater Treatment Plant and Regional and Central Water Treatment Plant project. METCO Southeast is a certified SBE and MBE Professional Engineering Firm.

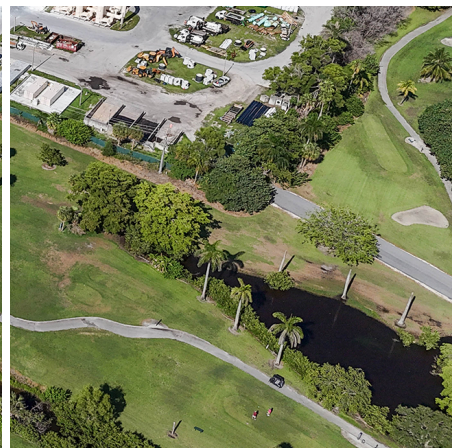
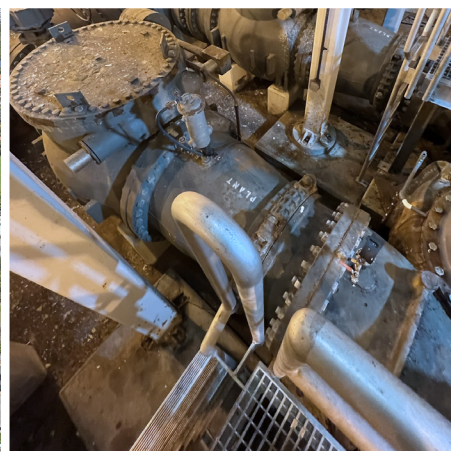
1021-690

The Hazen team consists of firms who have experience on multiple projects throughout Broward County—
we have a proven understanding of working through the City's system.

TAB



Financial Resources



Financial Resources

During Hazen’s 73 years of existence, we have consistently operated profitably. Hazen is a professional corporation wholly-owned by employees of the firm who are licensed professional engineers.

Management has always followed a conservative philosophy. In this way, the firm’s growth has been sustained and supported by a strong financial base. We are in a strong financial position in the industry, and there are no unique risks which would affect our continued existence. To demonstrate our stability, a letter from our bank is provided below.

Regarding bonding capacity, Hazen does not have a bonding facility. However, Hazen carries all required insurance policies.

Hazen has maintained a relationship with its bank since 1952.

Balances during the past 12 months have averaged in the low eight figures.

Hazen has not been involved in any prior or current bankruptcy proceedings.



Gordon L. Smith
Executive Director

October 7, 2024

City of Hollywood
Office of Procurement Services
2600 Hollywood Boulevard
Hollywood, FL 33020

Reference: RFQ-238-24-JJ; Design, Construction management and Inspection Services for the Influent Pump Station Upgrade

Ladies and Gentlemen:

We are pleased to provide the following information regarding our client, Hazen and Sawyer, D.P.C. Hazen and Sawyer, D.P.C. was formed as an engineering firm specializing in the design and construction supervision of water supply, sewerage and industrial waste systems.

Hazen and Sawyer has maintained a relationship with our bank since 1952. Balances during the past twelve months have averaged in the low eight figures. We extend to the company a line of credit in the low eight figures. Additionally, the company has standby letter of credit facilities outstanding with JPMorgan Chase Bank. The account has been handled in a fully satisfactory manner.

The information in this letter is provided as an accommodation to you. This letter and any information provided in connection therewith are furnished on the condition that they are strictly confidential, that no liability or responsibility whatsoever in connection therewith shall attach to **Chase** or any of its officers, employees, or agents, that this letter makes no representations regarding the general condition of the account holder named herein, their management, or their future ability to meet their obligations.

If you have any questions please do not hesitate to contact me: **212-270-1810**.

Sincerely,

Gordon Smith

J.P. Morgan Securities, LLC. | 383 Madison Avenue, 22nd Floor, New York, NY 10179

T: 212 270 1810 | gordon.l.smith@chase.com | chase.com/commercialbanking

TAB

J

Legal Proceedings and Performance



J Legal Proceedings and Performance

In the last 10 years, Hazen’s Southeast Region has been responsible for over \$8 billion worth of public works construction.

Our litigation record (or lack of) is excellent. The table on page 85 identifies claims brought against Hazen within the last five years, and includes professional liability as well as personal injury claims. Our claims history clearly indicates a lack of litigation, reflective of quality design work and cooperative attitudes. Please note that none of the listed cases will affect the performance of services to be rendered or our commitment to the City.

RFQ Requirements:

Hazen and Sawyer has not paid liquidated damages and has not been terminated for default. A letter on our firm’s letterhead is provided on the next page.

Provide a list of legal proceedings against your firm in the last five years. This shall include legal proceedings for the entire company. **Answer:** Please see page 83

1. Arbitrations; List all construction arbitration demands filed by or against your firm in the last five years, and identify the nature of the claim, the amount in dispute, the parties, and the ultimate resolution of the proceeding. **Answer:** Not applicable. Hazen has not had any arbitrations in the last 5 years.
2. Lawsuits: List all construction-related lawsuits (other than labor or personal injury litigation) filed by or against your firm in the last five years, and identify the nature of the claim, the amount in dispute, the parties, and the ultimate resolution of the lawsuit. **Answer:** Please see page 83
3. Other Proceedings: Identify any lawsuits, administrative proceedings, or hearings initiated by the National Labor Relations Board or similar state agency in the past five years concerning any labor practices by your firm. Identify the nature of any proceeding and its ultimate resolution. Identify any lawsuits, administrative proceedings, or hearings initiated by the Occupational Safety and Health Administration concerning the project safety practices of your company in the last five years. Identify the nature of any proceeding and its ultimate resolution. **Answer:** Please see the below description of a Maryland OSHA violation:

In 2020, Hazen received a Maryland Occupational Safety and Health (MOSH) violation of 1910.23(b)(8) classified as “Other” for incorrect use of a ladder. MOSH oversees public and private employers in the state of Maryland. This was a result of an inspection of our client in western Maryland. We happened to be on site during this interaction for an annual dam safety inspection. In addition to our client who operates the Dam, Maryland Department of the Environment Dam Safety inspectors were also present. We were cited for the 1 violation listed above while our client and Maryland DOE were both cited for 14 violations each.

4. Bankruptcies: Has your firm or its parents or any subsidiaries ever had a Bankruptcy Petition filed in its name, voluntarily or involuntarily? (If yes, specify date, circumstances, and resolution). **Answer:** Hazen has never had a bankruptcy petition.
5. Has a contract to which you were a party ever been terminated by the other party? **Answer:** No contracts have ever been terminated by the other party.
6. Have you ever had to use bonding moneys to complete a project or to pay a subconsultant or supplier? **Answer:** Hazen has never used bonded money to complete a project or to pay a subcontractor or supplier.



October 24, 2024

City of Hollywood
Office of Procurement Services
2600 Hollywood Boulevard
Hollywood, FL 33020

Subject: Response to Tab J – Legal Proceedings and Performance

RFQ Requirement:

Provide a letter on your firm’s letterhead indicating if your firm has paid liquidated damages and/or if your firm has been terminated for default. Provide details of these occurrences and the associated projects. If your firm has not paid liquidated damages or been terminated for default, include this on a letter with your firm’s letterhead.

Response:

Hazen and Sawyer has not paid liquidated damages and it has not been terminated for default.

Very Truly Yours,

William Crayon
Chief Financial Officer
Hazen and Sawyer

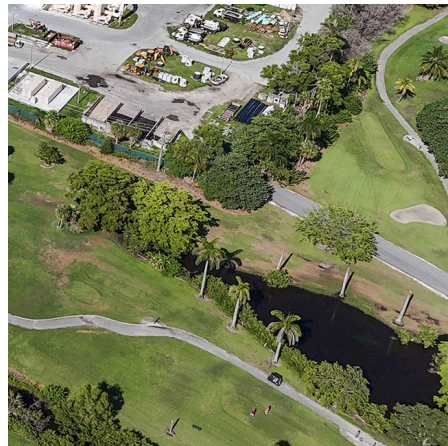
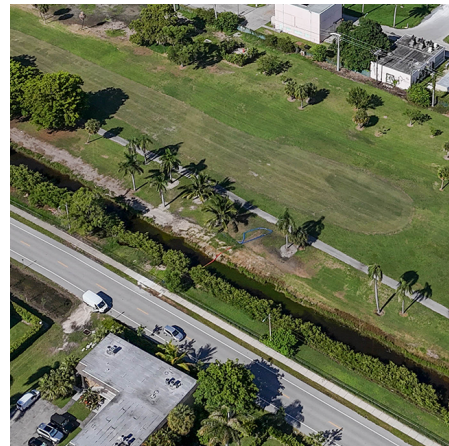
Professional Liability and Personal Injury Claims	Description	Date of Action	Date Closed/ Status	ID Number	Court
Close Construction, LLC v. City of Riviera Beach Utility Special District, C Solutions, Mark Drummond v Hazen and Sawyer.	C Solutions, engineer for the City of Riviera Beach seeks indemnity from Hazen as its subcontractor.	11/9/20	09/20/21/ Settled	Case No. 16 CA 013117 MB-AF	Circuit Court of the Fifteenth Judicial Circuit in and for Palm Beach Cty, FL
Gregory Bowman against City of New York, Skanska-Picone, J.V. and Hazen and Sawyer.	Gregory Bowman an employee of Ward Electric alleges he was struck by a cabinet unit at the 26th Ward WWTP.	11/13/19	Open	Index no: 159692/2019	Supreme Court of the State of New York, County of New York
Michael and Josephine D’Amato vs. WDF Development, LLC, WDF, Inc., American Insurance Group, American Insurance Corporation, American International Group, Inc., Insurance Co. of the State of PA, “John Doe,” Lasalle LaSalle & Dwyer, PC, Sean P. Dwyer, Leo Dudin, Anthony Colaizzi, and Hazen and Sawyer.	Michael D’Amato an employee of the City of New York alleges he was caused to trip and fall as a result of the negligence of WDF Development, LLC.	9/30/20	03/08/21/ Settled	Index No.: 157484/2020	Supreme Court of the State of New York, County of New York

TAB

K

Required Forms

Hazen has completed the required forms accordingly. We are formally acknowledging that Forms 1 and 3 are not applicable and therefore not included.



FORM 2

ACKNOWLEDGMENT AND SIGNATURE PAGE

This form must be completed and submitted by the date and the time of bid opening.

Legal Company Name (include d/b/a if applicable): Hazen and Sawyer, P.C. d/b/a Hazen and Sawyer

If Corporation - Date Incorporated/Organized: June 16, 1977 Federal Tax Identification Number: 13-2904652

State Incorporated/Organized: New York

Company Operating Address: 4000 Hollywood Boulevard, Suite 750N

City: Hollywood State: FL Zip Code: 33021

Remittance Address (if different from ordering address):

City: N/A State: _____ Zip Code: _____

Company Contact Person: J. Philip Cooke, PE
Vice President

Email Address: pcooke@hazenandsawyer.com

Phone Number (include area code): (954) 987-0066

Fax Number (include area code): (800) 304-8791
(corporate central fax number)

Company's Internet Web Address: www.hazenandsawyer.com

IT IS HEREBY CERTIFIED AND AFFIRMED THAT THE BIDDER/PROPOSER CERTIFIES ACCEPTANCE OF THE TERMS, CONDITIONS, SPECIFICATIONS, ATTACHMENTS AND ANY ADDENDA. THE BIDDER/PROPOSER SHALL ACCEPT ANY AWARDS MADE AS A RESULT OF THIS SOLICITATION. BIDDER/PROPOSER FURTHER AGREES THAT PRICES QUOTED WILL REMAIN FIXED FOR THE PERIOD OF TIME STATED IN THE SOLICITATION.

Bidder/Proposer's Authorized Representative's Signature:  Date: 10/21/2024

Type or Print Name: J. Philip Cooke, PE, Vice President

THE EXECUTION OF THIS FORM CONSTITUTES THE UNEQUIVOCAL OFFER OF BIDDER/PROPOSER TO BE BOUND BY THE TERMS OF ITS PROPOSAL. FAILURE TO SIGN THIS SOLICITATION WHERE INDICATED BY AN AUTHORIZED REPRESENTATIVE SHALL RENDER THE BID/PROPOSAL NON-RESPONSIVE. THE CITY MAY, HOWEVER, IN ITS SOLE DISCRETION, ACCEPT ANY BID/PROPOSAL THAT INCLUDES AN EXECUTED DOCUMENT WHICH UNEQUIVOCALLY BINDS THE BIDDER/PROPOSER TO THE TERMS OF ITS OFFER.

SUBMISSION

How to submit bids/proposals: Vendor's solicitation response may be submitted electronically through BidSync, the City's designated electronic bidding system, or by mail or hand delivery to the address noted above. It is the Vendor's sole responsibility to assure its response is submitted and received by the date and time specified in the solicitation. Any timeframe references are in Eastern Standard Time. The official time for electronic submittals is BidSync's servers, as synchronized with the atomic clock. All parties without reservation will accept the official time.

Important Notice:

The Procurement Services Division shall distribute all official changes, modifications, responses to questions or notices relating to the requirements of this document. Any other information of any kind from any other source shall not be considered official, and bidders relying on other information do so at their own risk.

The responsibility for submitting a bid/proposal on or before the time and date is solely and strictly the responsibility of the bidder/proposer, the City will in no way be responsible for delays caused by technical difficulty or caused by any other occurrence. No part of a bid/proposal can be submitted via FAX or via direct Email to the City. No variation in price or conditions shall be permitted based upon a claim of ignorance.