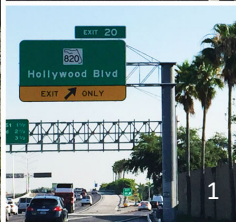
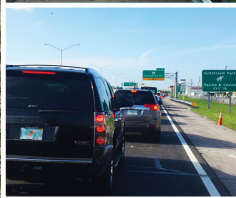
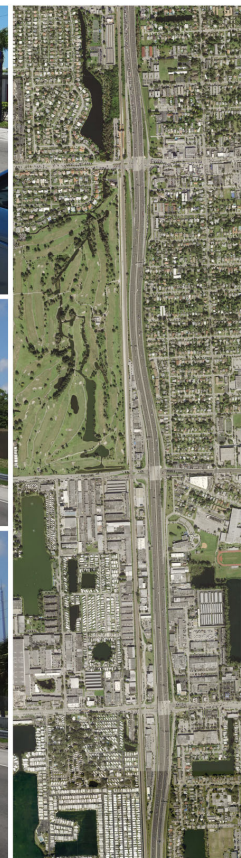




## PROJECT DEVELOPMENT & ENVIRONMENT (PD&E) STUDY

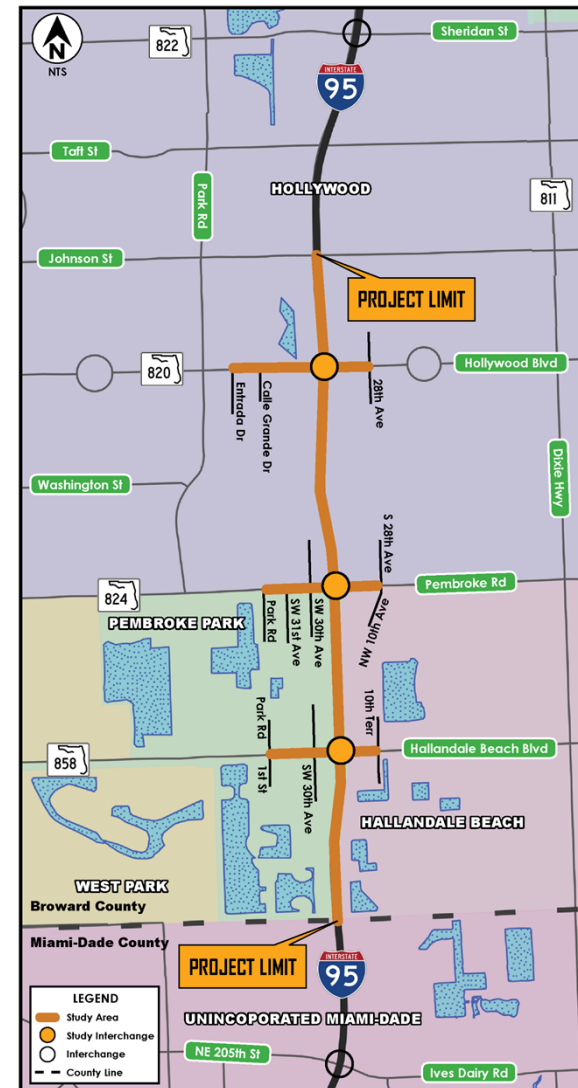
Interstate 95 (I-95/SR 9) • From South of Hallandale Beach Boulevard (SR 858) to North of Hollywood Boulevard (SR 820)  
Broward County, FL • FPID No.: 436903-I-22-02 • ETDM No.: 14254





## PD&E Study - Project Limits and Study Area

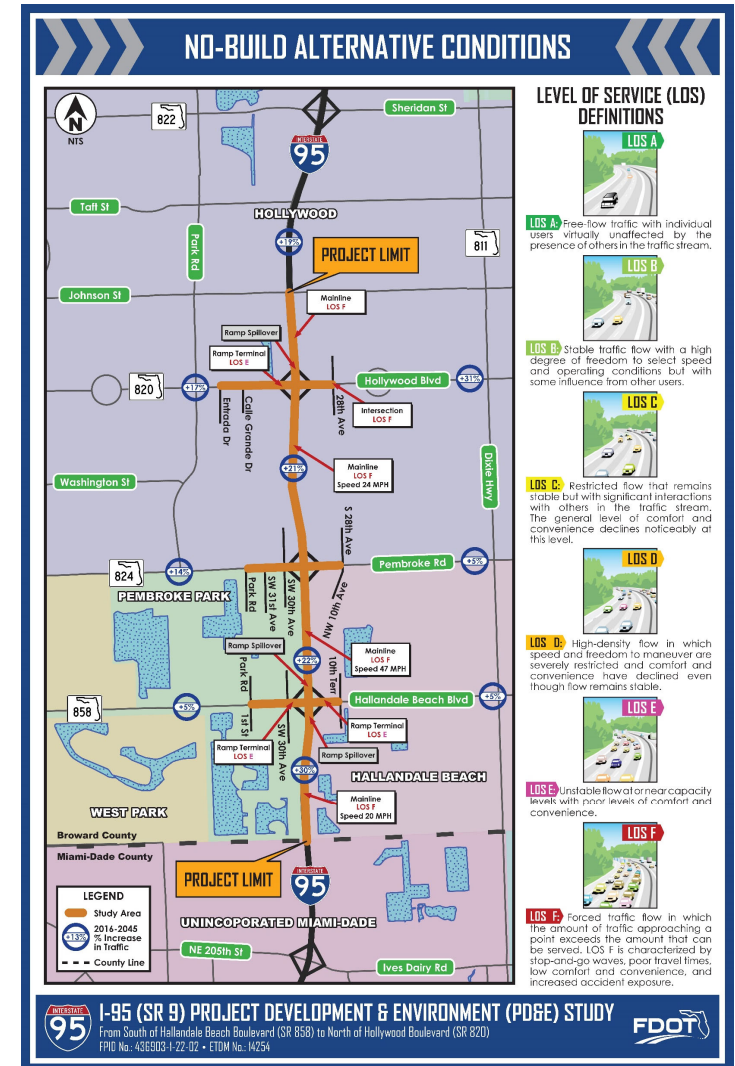
- ❑ From: South of Hallandale Beach Boulevard  
(Miami-Dade/Broward Countyline)
- ❑ To: North of Hollywood Boulevard  
(Johnson Street)
- ❑ 3 Miles
- ❑ 3 Interchanges
- ❑ Broward County, Florida
- ❑ Municipalities:
  - Hallandale Beach
  - Pembroke Park
  - Hollywood





# PD&E Study - Scope of Project

- ❑ Evaluate Interchange Improvements
- ❑ Identify Ramp Terminal Intersection Improvements
- ❑ Evaluate the social, economic, physical and environmental impacts associated with the potential improvements
- ❑ Evaluate Traffic Operations
  - Opening Year 2030
  - Design Year 2045
- ❑ Identify a Preferred Alternative





## Corridor Traffic Demand

13-23% increase in traffic from year 2016 to 2045

- Interstate 95: 23% Average Increase
- Hallandale Beach Boulevard, Pembroke Road and Hollywood Boulevard: 13% Average Increase



Collisions due to heavy congestion and constant stop-and-go

## Safety

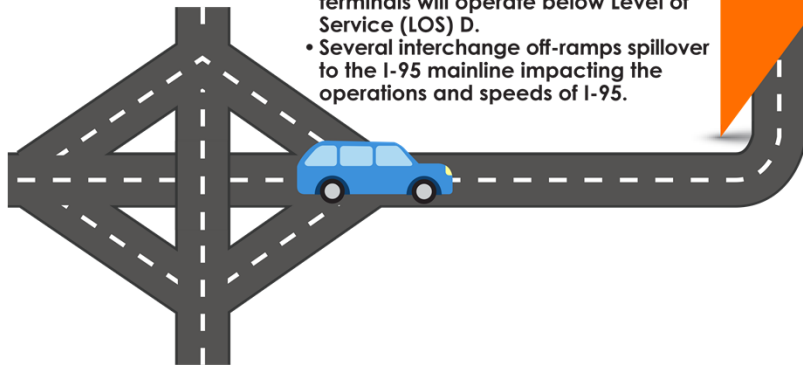
- Over 2,800 crashes on I-95 between 2008-2015.
- Congestion and additional future traffic will increase accidents within the area.



## Interchange Capacity Needs

- I-95 freeway segments between interchanges and interchange ramp terminals will operate below Level of Service (LOS) D.
- Several interchange off-ramps spillover to the I-95 mainline impacting the operations and speeds of I-95.

Additional capacity is needed now



Part of emergency evacuation route



## Emergency Evacuation

- The I-95 corridor is vital during emergency evacuation periods.
- Hallandale Beach Boulevard, Pembroke Road, and Hollywood Boulevard are also part of the emergency evacuation routes network.



# Preferred Alternative – Collector Distributor Roadway System

EXISTING  
CONDITIONS

Hallandale Beach Blvd

Pembroke Rd

Hollywood Blvd

INTERSTATE  
95

PROPOSED  
CONDITIONS

Hallandale Beach Blvd

Pembroke Rd

Hollywood Blvd

INTERSTATE  
95

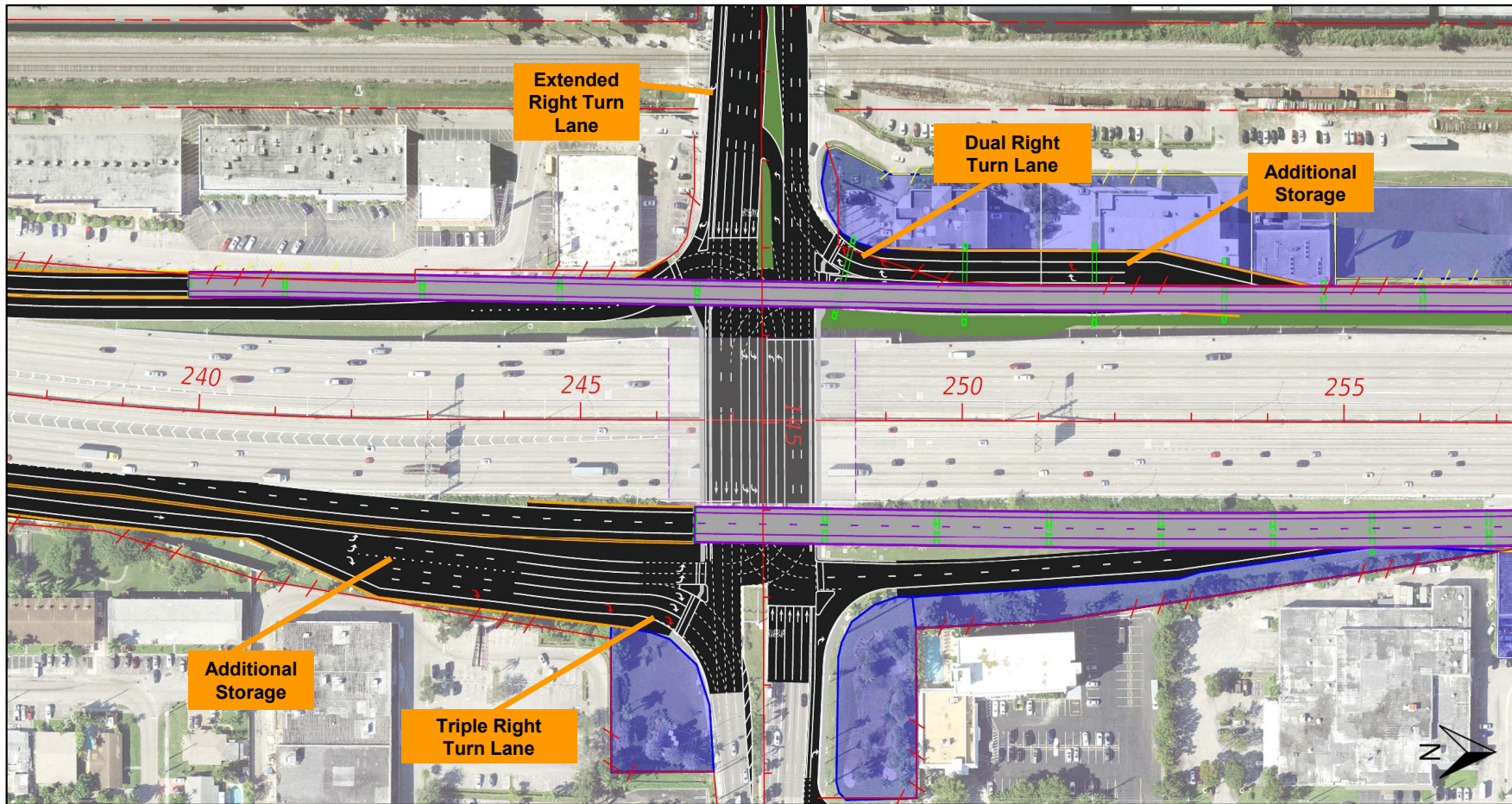
From Pembroke Rd

To Hollywood Blvd  
and Pembroke Rd

To Pembroke Rd and  
Hollywood Blvd

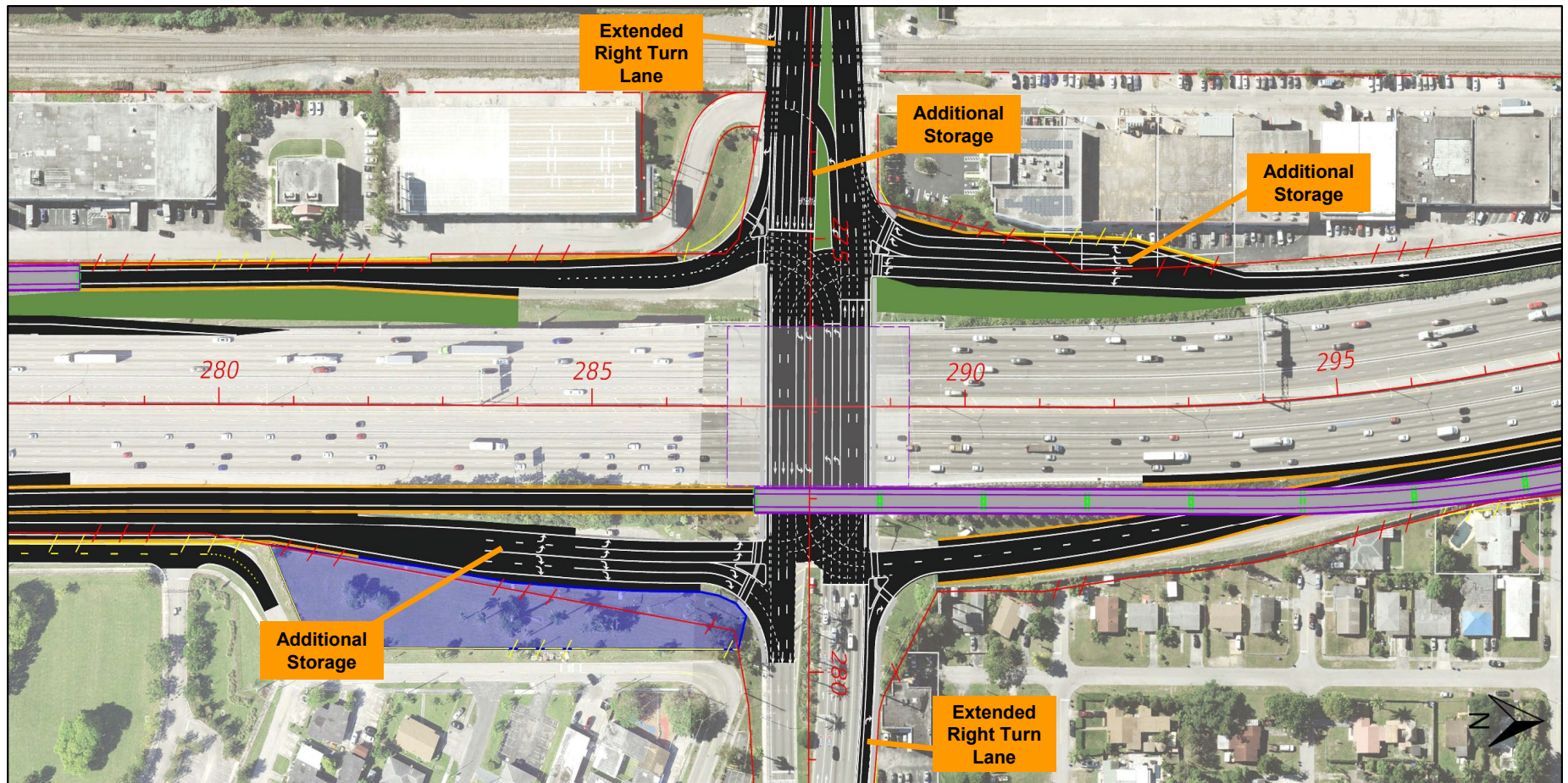


# Preferred Alternative – Hallandale Beach Boulevard Interchange



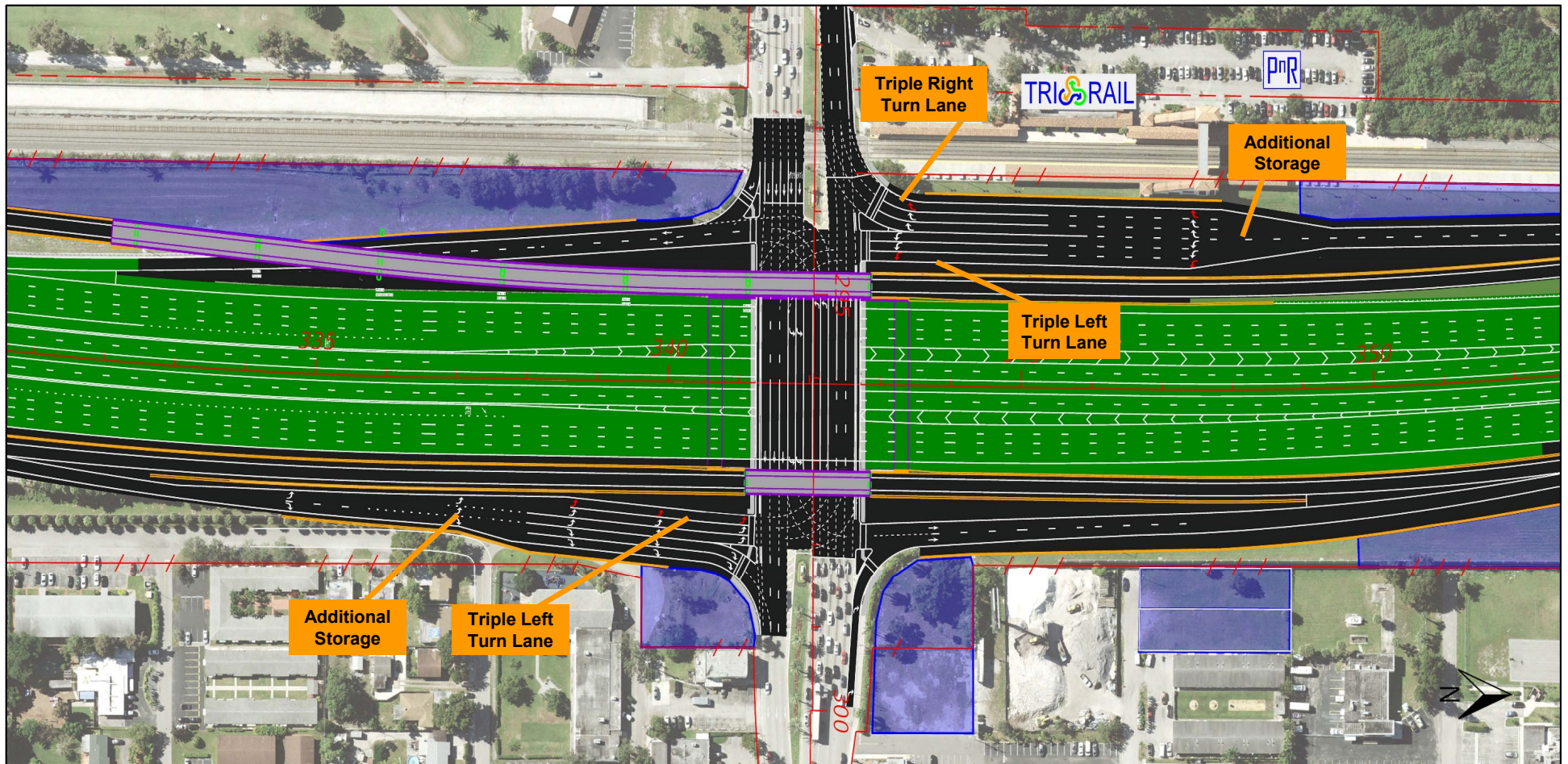


# Preferred Alternative – Pembroke Road Interchange





# Preferred Alternative – Hollywood Boulevard Interchange





1

## OPEN HOUSE



2

## PRESENTATION



3

## COMMENT PERIOD

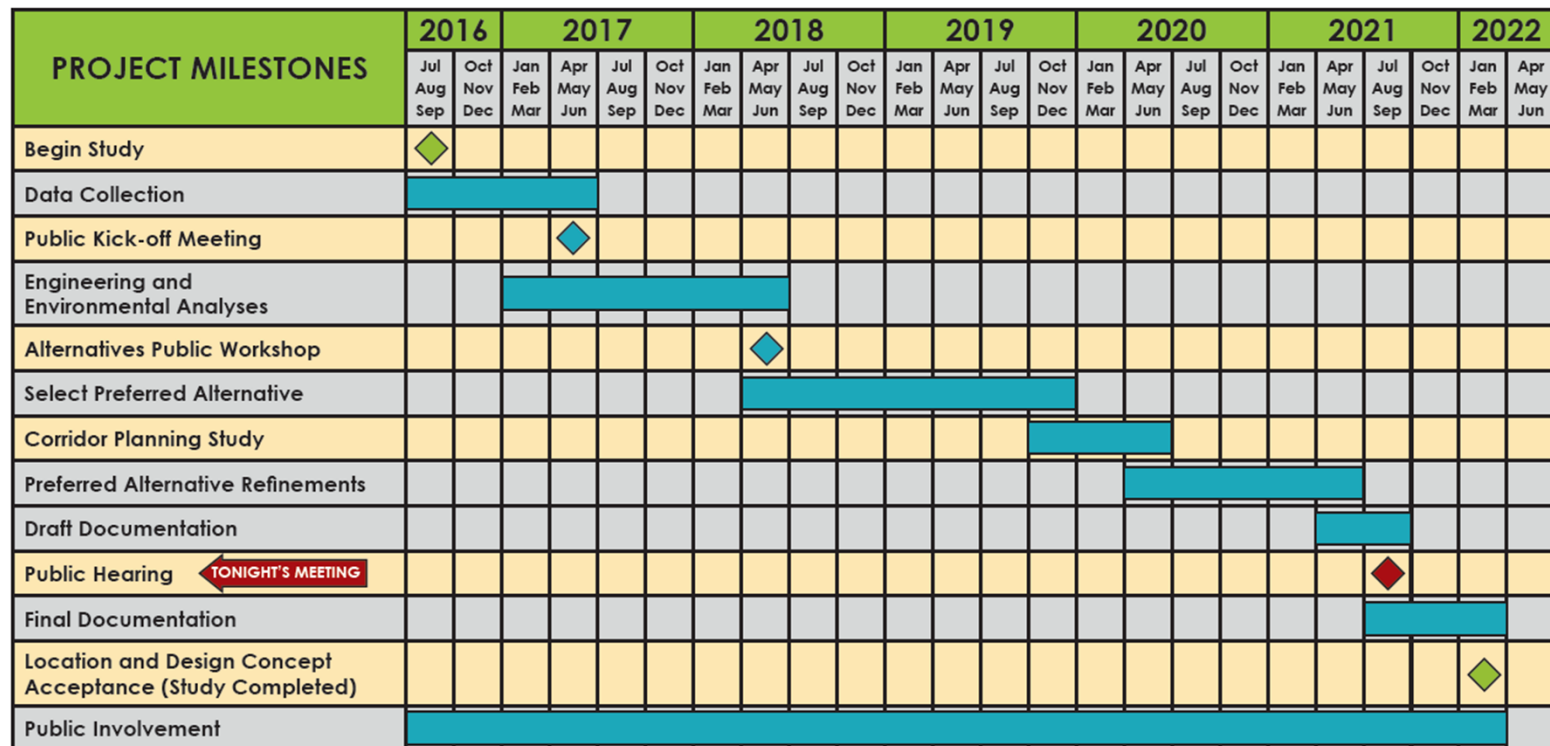


### Public Hearing Dates:

- Virtual – August 26<sup>th</sup> at 6:00 pm
  - In-Person – September 2<sup>nd</sup> at 6:00 pm
- Holiday Inn Fort Lauderdale-Airport Hotel**  
**2905 Sheridan Street, Hollywood, FL 33020**



# PD&E Study – Milestone Schedule



• Design Phase - Scheduled for Fiscal Year 2022

• Construction Phase - Unfunded at this time

Schedule Subject to Change

- ❑ PD&E Study to be completed by January 2022
- ❑ The Design phase is funded in the FDOT Work Program in Fiscal Year 2022
- ❑ Construction is currently unfunded



