

Trespassing Pilot Grant Program Operation Fast Track

Hollywood Florida
Hollywood Police Department
\$70,144.00

Point of contact:

Lieutenant Perry Beckford
Hollywood Police Department
Neighborhood Services
3250 Hollywood Blvd
Hollywood FL, 33021
PBeckford@hollywoodfl.org
office: 954-967-4505
cell: 954-410-1238

Congressional Districts 23 & 24

Eligibility Criteria

The City of Hollywood Police Department meets the eligibility criteria for grant application. The City of Hollywood Police Department is a local police department in Broward County, State of Florida. The City of Hollywood has approximately 6.2 combined miles of railroad mainline track within its boundaries. The City of Hollywood has had a demonstrated problem as outlined further in this document.

Summary

Trespassing on a railroad's private property and along the railroad right of way is the leading cause of rail-related fatalities in America. Broward County has seen a 350% increase in railroad trespassing fatalities rising from a low of two (2) in 2016 to a high of nine (9) in both 2017 and 2018. In 2018, 27% of the State's Trespassing Fatalities took place in Broward County. The trend has continued into 2019 as Hollywood Officers have already responded to the scene of four (4) fatal railroad incidents. Three (3) of which were pedestrians getting struck by a passing train while the fourth involved a vehicle leaving the street and crashing into a railroad safety barrier on a contiguous roadway.

Not only has Broward County led the state in railroad related casualties, the Federal Railroad Administration identified Broward County as a top five (5) county in the nation in regards to railroad trespasser casualties in the "National Strategy to Prevent Trespassing on Railroad Property" report provided to congress earlier this year. As a disproportionate number of these fatalities continue to take place within the City of Hollywood it is imperative a plan of action not only be developed but implemented.

In an effort to reduce these tragic statistics, the Hollywood Police Department is seeking an award of \$70,144 to participate in the Trespassing Pilot program and provide directed overtime enforcement and education along the City of Hollywood's two rail corridors.

The goal of this six (6) month enforcement and educational campaign will be to; maintain such a visible presence, underscored with constant repeated safety messaging, that it influences the behavior of the community, creates a long lasting reduction in the amount of trespassing along the rail-line, and reduces rail-related deaths.

Project Description

The Federal Railroad Administration (FRA) is initiating a six (6) month “Pilot Grant Program” to assist communities at risk for rail trespassing related incidents and fatalities. The funded agencies will perform rail trespassing enforcement related activities and report those activities and associated benefits to the FRA.

The total amount of discretionary funding available under this grant is \$150,000. There are no predetermined minimum or maximum dollar thresholds for awards. This money is for enforcement related activities based on an officer’s overtime rate. Neither cost sharing nor matching is a requirement for this grant program.

The Hollywood Police Department is seeking an award of \$70,144 to participate in the Trespassing Pilot program. This award will be used to provide directed overtime enforcement and education along the City of Hollywood’s two rail corridors.

A Historical Perspective:

The City of Hollywood is a coastal city in Broward County, Florida, with an approximate population of 154,823 residents. (2018 Hollywood Police Department Annual Report) This number swells during the winter months by approximately 500,000 (A November 13, 2011| Sun Sentinel article by Tonya Alanez, reported 500,000 snowbirds visited Broward County).

The City is transected north to south in its Eastern District by the Florida East Coast Railway (FEC) line and in the Western District by the Amtrak/Tri Rail lines. (ATK/SFRV)

In a typical year, the Police Department averages over 200,000 calls for service. In 2017, the Police department had a record breaking 237,844 calls for service. (2017 Hollywood Police Department Annual Report)

In 2018, 5,227 calls for service originated along the FEC line, with an additional 1,429 calls for service originating along the ATK/SFRV line. This is a total of 6,656 calls along and adjacent to the City’s two rail line corridors.

The Eastern District:

The FEC corridor is made up of 2.5 miles of double track, running north and south between Hollywood’s 21st Avenue to the east and Dixie Highway to the west. Currently, this line is used by the FEC to move freight. This line is also used as a high speed passenger line by the Brightline Train. There are an average 34 high speed Brightline commuter trains transiting through the City of Hollywood on a daily basis, all traveling at approximately 70 mph. There have been 40 fatalities involving Brightline trains since they began test runs in July 2017, making the line the deadliest of the nation’s 821 railroads.

None of the crashes have been a result of train operator error and have been caused by combination of trespassers on the tracks and impatient pedestrians and motorist attempting to beat the speeding train while crossing the tracks.

The railroad property between roadways is an open grass swale area, with no barriers or obstruction to prevent the crossing of the rail line by pedestrians. The rail lines run through this mixed use, residential, and commercial area. Along the corridor, there are several notable businesses or structures. There are four (4) neighborhood convenience stores, five (5) bars, one supermarket, several “strip mall” style store fronts, one elementary school, one university satellite campus, a drug treatment center, a 75 person homeless shelter, a “soup kitchen”, and two City parks.

The rail line has 10 crossings. Nine are controlled by traffic lights and one is controlled by stop signs.

The approximate middle of the 2.5 miles of rail creates the western boundary of the City’s Downtown area. This is a destination area with shopping, restaurants, bars and night clubs.

To the south of the Downtown area, from Hollywood Blvd to Pembroke Road, the area is bordered by neighborhoods of a lower economic demographic.

The residents in these neighborhoods have historically traveled back and forth across the tracks to access local businesses such as a neighborhood convenience store or a coin operated laundry.

The area north of the Downtown Business District, from Hollywood Blvd to Sheridan Street, contains the Avant Guard Academy and a Barry University satellite campus. The Avant Guard Academy is a K-8 school with a student population of approximately 1,500 children. This area also contains the Broward Outreach, a 75 bed homeless shelter, and the Jubilee Center, a “soup kitchen” which provides lunch to 150 clients, Monday through Friday. Both of these social service locations cater to a pedestrian homeless population that regularly cross the tracks to access the services.

As children and the homeless population are most at risk for accidental death along the rail line, specific educational outreach will primarily take place at the Broward Outreach, the Jubilee Center, Avant Guard Elementary School, and the drug treatment center (Methadone clinic), all of which directly abut the rail line. Additional education and outreach will be provided to the Broward County Multi Agency Homeless Task Force.

Initial contact with Leanna Vasquez, the Director of the Jubilee Center, was extremely positive and well received. This location provides lunch to about 150 clients, Monday through Friday.

Ms. Vasquez stated, “Many of these clients are homeless/transient and whom admit to crossing the tracks on a daily basis.”

The Western District:

The Amtrak/Tri-Rail (ATK/SFRV) line is made up of 3.6 miles of double track, branching into four (4) lines of track along the northern end of the line in Hollywood.

This line is bordered on the east by I-95 and to the west by businesses, residential neighborhoods and City parks. The area along the line is primarily unpaved grass, trees and other vegetation. The semi-concealed nature of this line creates the perfect conditions that allow for trespassing and homeless “camping”.

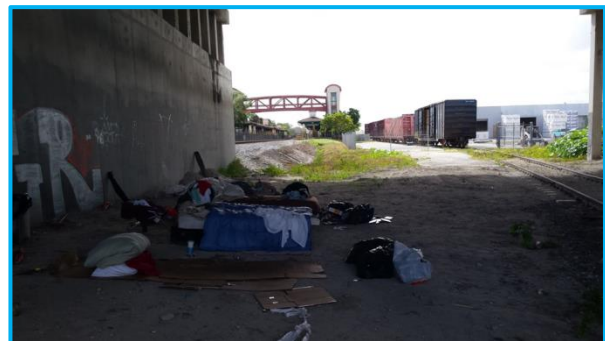
There has been a historical problem along this line with such activity.

In an October 15, 2015 email from Officer Carol Solowsky to Nikeisha Thomas, Maintenance of Way Project Manager, South Florida Regional Transportation Authority, Officer Solowsky reported;

“I wanted to make you aware of a situation we have encountered over the past few months under the bridge that runs parallel to Sheridan Street (just north of the TriRail station at 2900 Sheridan Street) along the TriRail tracks. We have received several complaints from TY Park campers (3301 N Park Road) and visitors as this area can be seen from the southeast portion of the campground.

We have been dealing with homeless subjects who camp out under the bridge adjacent to the tracks from time to time. Several months back, we were able to relocate some who were sleeping there into a drug rehab program. Since that time, another set of subjects have taken up residence and have furnished it with several mattresses etc. I attached two photos that I took last week while I was out there.

To my knowledge, the subject who had been sleeping there is in jail and I am requesting the debris be removed. Also, the graffiti has increased and has never been addressed.”



Photos taken during the October 2015 cleanup operation coordinated by the Hollywood Police Department's Neighborhood Services Unit, under the direction of Officer Carol Solowsky.

In an email from March 19, 2018, Officer Carol Solowsky reported;

"I've recently followed up on a resident complaint involving homeless individuals congregating underneath the RR tracks between Stirling Road and Sheridan Street. I was out there with another Officer last week and located two people living underneath the tracks along the canal. It appears as though this has been an active encampment for some time, as there is a large amount of debris (mattresses, bicycles, suitcases, etc.) collected there. I have relocated the subjects, but am hoping one of your crews can come out for a debris removal."

In an April 13th follow-up email, Officer Solowsky reported;

"The debris cleanup was completed yesterday along the RR tracks west of I-95. Approximately 20 construction style bags of debris were removed to include suitcases, bbq grills, beer cans, empty food containers, and general garbage were removed by VTMI. A crew of 10 men and 2 large trucks were deployed and coordinated by HNTB who climbed down under the bridge, bagged all the debris and stacked them alongside the tracks for removal. Aside from the bagged material were several large sheets of plywood, wood pallets and an actual floating wood dock that was being used as an easy crossing over the canal."

I wanted to give special thanks to Jason Antolini from HNTB who works closely with SFRTA (South Florida Railway Transit Authority) and the roadmaster from VTMI, Gary Shipley. Jason coordinated the cleanup effort for me and Gary the actual removal. Without the prompt response and efforts of these two gentlemen, a very active homeless camp and potential fire hazard would still be problematic."



Photos taken during the April 2018 cleanup operation coordinated by Officer Carol Solowsky.

There are two Tri Rail Stations along the line, the Hollywood Station and the Sheridan Street Station. The Hollywood Station is also a stop used by Amtrak.

According to Tri Rail, they have an average weekday ridership of 15,000 accounting for over four million passenger rides annually. Their current weekday schedule has a total of fifty (50) trains traveling through the City of Hollywood. Amtrak statistics show that in 2017, 24,621 persons either boarded or alighted at the Hollywood Station. In 2018, they reported 22,592 riders.

There are 6 vehicular/pedestrian crossings intersections along the line. The Hollywood Station directly abuts the intersection crossing at Hollywood Blvd. This crossing is used heavily by passengers arriving and departing on foot or bicycle.

Enforcement:

Generally, warning, enforcing, and documentation will take place when Officers encounter subjects walking along either of the City's rail lines, loitering along the railroad property right of way, or crossing the rail line at other than controlled crossings. Motorists and pedestrians who attempt to go around the lowering railroad arms or beat oncoming trains placing themselves in danger will be stopped and subject to being either cited or arrested.

All stops will be documented and the subject's information will be captured. Less serious first time offenders, absent other criminal charges (ex. a warrant, drug or alcohol use or possession, camping, etc.), will receive a printed information card (such as provided by Amtrak or Brightline) and be advised of the trespass violation and the safety risks associated with trespassing along the line. Officers will be encouraged to take the appropriate enforcement action for any dangerous or egregious offenses they observe.

Persons with additional infractions or criminal charges will be cited or arrested. Repeat offenders with one or more prior stops and/or warnings will be cited or arrested.

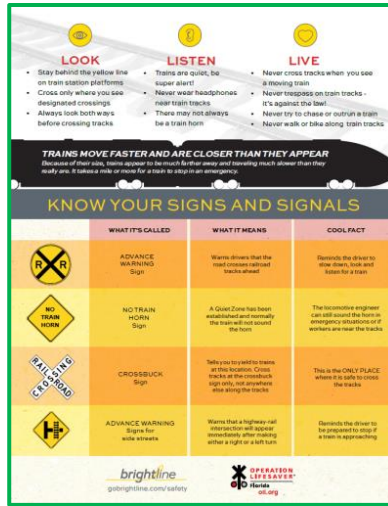
Officers will patrol the ATK/SFRV line by accessing the easement on foot, on Police bicycle, ATV or UTV, or other suitable Police vehicle. If camps are located, the Officers will notify the Department's Neighborhood Services Unit, who will coordinate with Public Works to effect removal and cleanup of the site. This cleanup will not be coordinated or reimbursed by this project, but the data collected will be used in the final performance reporting in accordance with Grant requirements.

Education:

Education will occur during every encounter as described above.

Although not funded by the grant, Officers will also conduct an educational campaign about track safety. Officers will conduct specific targeted educational campaigns at the area homeless shelter, The Broward Outreach, the area "soup kitchen", the Jubilee Center, and work in partnership with the Broward County Multi Agency Homeless Task Force. Rail safety education will also take place at area schools.

The use of available printed materials will aid in bringing forward our safety messaging. Currently, Brightline has partnered with Operation Lifesaver, a nationwide non-profit, dedicated to raising overall awareness around rail safety. They have developed safety materials that emphasize remaining safe through increased awareness and by staying off all railroad tracks.



Examples of available printed materials. These materials are available in English, Spanish, Creole, and Portuguese.

Additional educational opportunities will occur at the pedestrian crossings, such as the one at the Hollywood Station. Officers will be required to make contact with citizens using the crossings during their patrols and provide the safety material and reemphasize the train awareness safety messaging. To prepare our Officers we will work with our railroad community partners to provide training to Officers at upcoming lineups.

In addition the department will utilize our Public Information Officer and Social Media Platforms to highlight our enforcement and education efforts.

Geospatial data

Federal Railroad Administration (FRA) data indicates that Broward County has consistently been the most dangerous Counties in the United States, as it relates to Railroad related casualties.

TRESPASSER DEATHS (EXCLUDES HIGHWAY-RAIL INCIDENTS)

Selections: Railroad - All Railroads
State - FLORIDA County - All Counties
All Regions
All Job Types / All Locations / Fatalities Only
CALENDAR YEAR (January-December) 2018

Last Database Reported Month/Year=9/2019

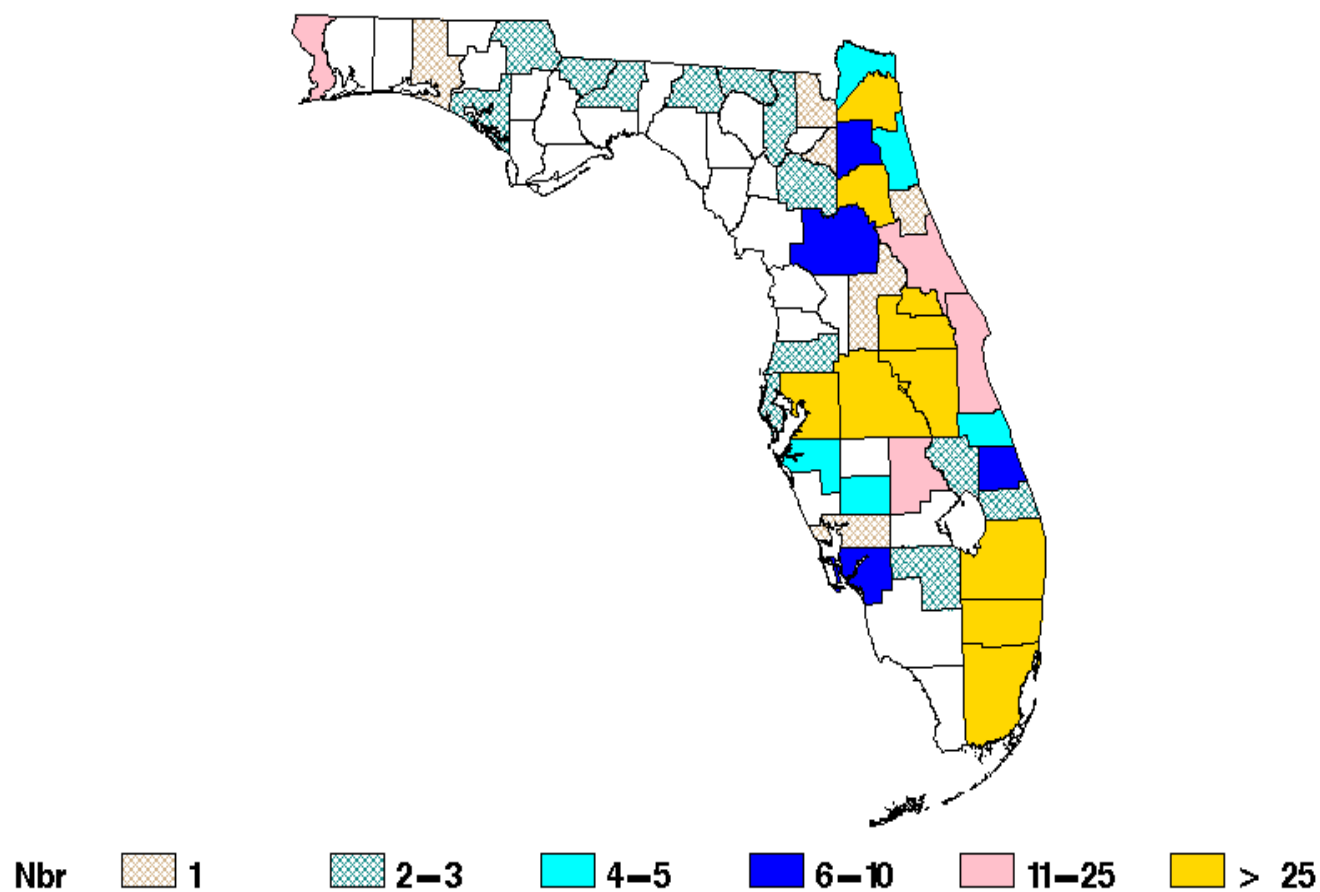
Counties	Total		Total CY Counts			Month To Month Counts Jan - Dec		% Change Over Time		
	Cases	Pct of Total	CY 2015	CY 2016	CY 2017	CY 2017	CY 2018	CY 2015 to CY 2017	CY 2016 to CY 2017	Month To Month % Change CY 2017 to CY 2018
GRAND TOTAL....	132	100.0	32	29	38	38	33	18.8	31.0	-13.2
BROWARD	26	19.7	6	2	9	9	9	50.0	350.0	.
PALM BEACH	26	19.7	7	5	8	8	6	14.3	60.0	-25.0
MIAMI DADE	11	8.3	4	1	3	3	3	-25.0	200.0	.
BREVARD	9	6.8	2	3	1	1	3	-50.0	-66.7	200.0
POLK	9	6.8	3	1	3	3	2	.	200.0	-33.3
ORANGE	8	6.1	1	1	4	4	2	300.0	300.0	-50.0
VOLUSIA	7	5.3	.	4	2	2	1	.	-50.0	-50.0
SEMINOLE	6	4.5	1	.	4	4	1	300.0	.	-75.0
HILLSBOROUGH	5	3.8	2	1	2	2	.	.	100.0	.
MARION	4	3.0	.	4
CLAY	3	2.3	.	.	1	1	2	.	.	100.0
ESCAMBIA	3	2.3	2	1
DUVAL	2	1.5	1	.	.	.	1	.	.	.
LEON	2	1.5	.	.	1	1	1	.	.	.
MARTIN	2	1.5	1	1
PASCO	2	1.5	1	1
ST JOHNS	2	1.5	.	2
COLUMBIA	1	0.8	1	.	.	.
JACKSON	1	0.8	1
MADISON	1	0.8	.	1
NASSAU	1	0.8	.	1
OSCEOLA	1	0.8	1	.	.	.

The annual reporting from all counties in Florida shows Broward County with a dramatic increase in fatalities since 2016. The County accounted for more than a quarter of the trespasser fatalities in the state in 2018.

FLORIDA, January 2017 TO September 2019

RAILROAD: ALL

ALL CASUALTIES / All Records



FLORIDA, By County

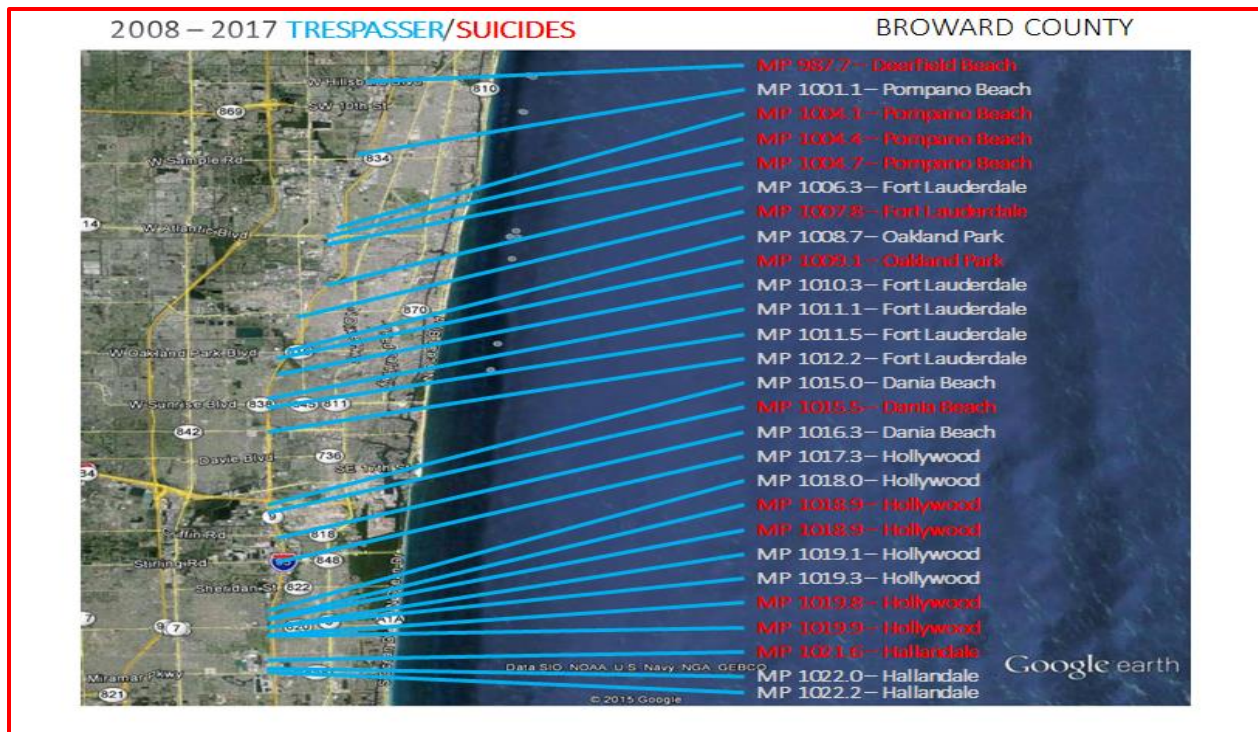
County	CASUALTIES		Total
	Fatal	Nonfatal	
ALACHUA	1	2	3
BAKER	-	1	1
BAY	-	2	2
BRADFORD	-	1	1
BREVARD	6	7	13
BROWARD	40	150	190
CHARLOTTE	-	1	1
CLAY	6	3	9
COLUMBIA	1	1	2
DADE	-	3	3
DE SOTO	-	4	4
DUVAL	4	74	78
ESCAMBIA	-	15	15
FLAGLER	-	1	1
GADSDEN	-	2	2
HAMILTON	-	2	2
HENDRY	-	2	2
HIGHLANDS	2	12	14
HILLSBOROUGH	5	41	46
INDIAN RIVER	-	4	4
JACKSON	-	2	2
LAKE	-	1	1
LEE	-	9	9
LEON	2	-	2
MADISON	-	2	2
MANATEE	1	4	5
MARION	1	6	7
MARTIN	1	1	2
MIAMI-DADE	14	115	129
NASSAU	-	5	5
OKEECHOBEE	-	2	2
ORANGE	10	45	55
OSCEOLA	1	39	40
PALM BEACH	36	140	176
PASCO	-	3	3
PINELLAS	-	2	2
POLK	10	46	56
PUTNAM	-	26	26
SEMINOLE	6	56	62
ST JOHN	2	2	4
ST LUCIE	4	5	9
VOLUSIA	4	15	19
WALTON	-	1	1
Total...	157	855	1,012

**Table 1: U.S. Counties with the Most Railroad Trespasser Casualties, Not Including Suicides
November 2013 to October 2017**

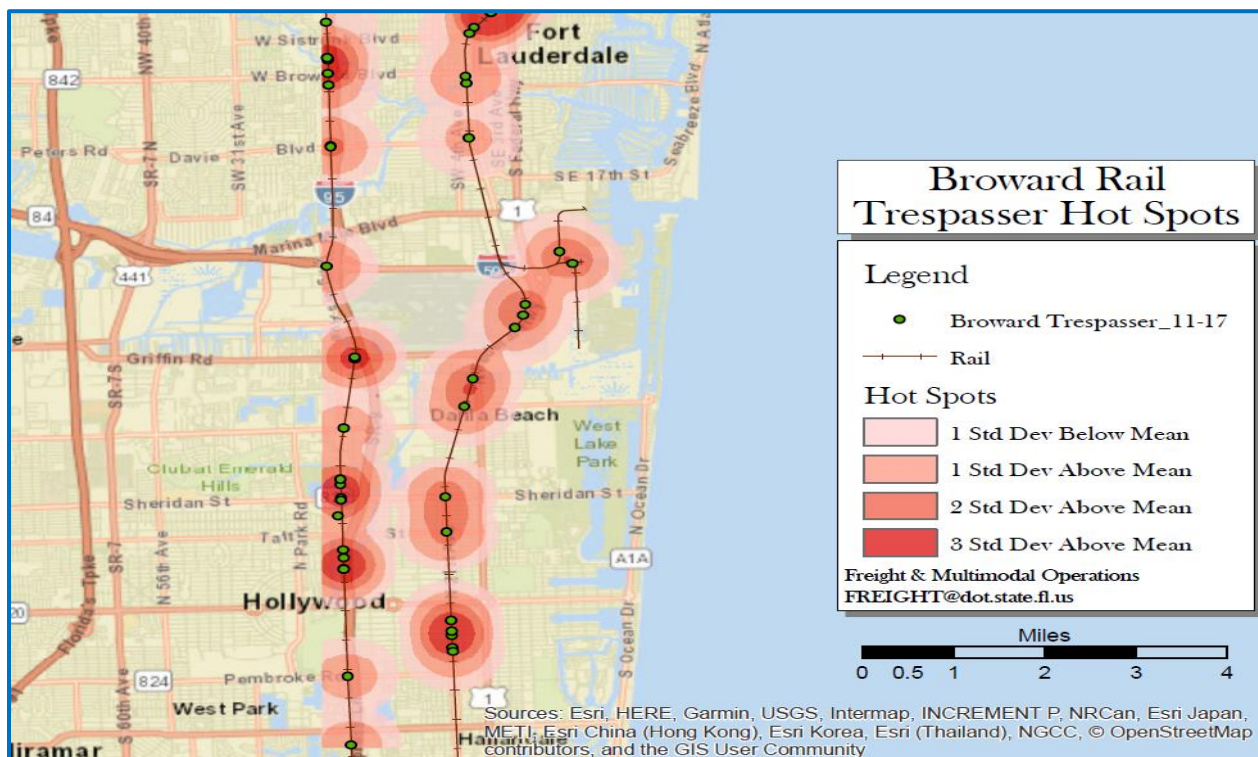
Rank	County	Casualties	Rank	County	Casualties
1	Los Angeles, California	110	6	Palm Beach, Florida	47
2	Cook (Chicago), Illinois	109	7	Fresno, California	46
3	San Bernardino, California	59	7	Riverside, California	46
4	Harris (Houston), Texas	52	9	Contra Costa, California	44
5	Broward, Florida	51	9	San Diego, California	44

Source: FRA analysis

Since as far back as 2013 it has ranked in the top 5 in the nation for casualties and the trend has continued into 2019.



This map illustrates that when suicides are included Hollywood has twice as many Trespassing / Suicide deaths as any other City in Broward County.



Hollywood figures prominently in Broward Rail Trespasser Hotspots.

Many of the incidents involving the rail line have been reported in the news. A quick Google search for incidents reveals stories with headlines like:

“Man killed when train hits car on tracks in Hollywood, report says”

- Sun Sentinel, February 7, 2016



“Train hits, kills female crossing tracks in Hollywood”

- Sun Sentinel, September 5, 2016

“Fatal Tri-Rail crash in Hollywood likely a suicide, investigators say”

- Sun Sentinel, May 16, 2017



“Tri-Rail train barrels toward car, but driver escapes in nick of time”

- Sun Sentinel, October 19, 2017

“Brightline train kills person in Hollywood in suspected suicide”

- Sun Sentinel, Nov 24, 2018

“Pedestrian trying to ‘beat’ Brightline train was struck and killed authorities say”

- Miami Herald , March 7, 2019

“Pedestrian fatally struck by Brightline train in Hollywood”

- Sun Sentinel, July 29, 2019

“Woman Crashes into railroad safety barrier, dies”

- Sun Sentinel, November 18, 2019



Hollywood CAD calls for service:

Many of the Police calls for service along the rail lines go unreported to the rail authority. A simple key word search through CAD, in an attempt to locate incidents that were called in to the Police Department and were specific to the rail line, produced the following results:

A review of the Hollywood Police Departments Computer Aided Dispatch (CAD) calls for service along the FEC line, from January 2017 to October 2019, revealed 349 CAD events.

88 CAD events involved trespassing or a person(s) on the tracks who were not struck. This includes multiple suicide attempts which were prevented.

*Some CAD examples: "Caller adv that male is laying on train tracks unk if cons or breathing",
"2x juvs (1x fem & 1x male) near train, lying down on tracks",
"5-6 subj's living by the train tracks and urinating in the area"
"Comp adv he is going to throw himself ifo a train"
"37s (Juveniles) videoing themselves playing chicken w/ passing trains"
"Brightline train on emergency stop ref a B/M sitting on the tracks"
"Comp adv fem wrecked her veh and got and ran, comp adv fem veh is stuck on RR tracks"*

87 CAD events were related to a stuck vehicle(s) car parts or debris other debris causing a hazard by obstructing the tracks.

*Such as: "Male hit a pole and drove straight onto the train tracks"
"Ref giant pieces of cement blocks on the train tracks look like it poss fell from a truck"
"Comp adv fem wrecked her veh and got and ran, comp adv fem veh is stuck on RR tracks"*

174 CAD events involved some malfunction of the rail arms or signals.

A review of the Hollywood Police Departments Computer Aided Dispatch (CAD) calls for service along the ATK/SFRV line, from January 2017 to October 2019, revealed 689 CAD events.

93 CAD events involved trespassing or a person(s) on the tracks.

*Such as: "Naked man on the train tracks..almost got hit by a train"
"Homeless subj's on track 2"
"Clr adv there are kids on a megaphone going up and down the tracks between Johnson and Taft"*

35 CAD events related to a vehicle(s) on the tracks and/or an accident or incident involving a vehicle and rail equipment.

*Such as: "At the hw tri rail ref her toyt yaris is stuck on the tracks for 10 mins... "
"Veh flipped is next to the railroad tracks"*

99 CAD events involved some malfunction of the rail arms or signals.

189 CAD events involved some sort of police response to events with the most common being disturbances at one of our train stations and ranging from batteries in progress to late reported vehicle thefts.

In an effort to more proactively address the deadly trend, 238 CAD events were officer initiated activity, such as a “Park and Walks” or subject stops along the train tracks, or at train stations.

In addition, between October 2018- November 2019 Officers responded to six (6) fatal incidents, five (5) where a subject was struck by a passing train and a sixth involving a vehicle crashing into railroad safety equipment

Costs

The Hollywood Police Department will seek an award of \$70,144. This will be used to provide directed overtime with the sole focus of enforcement along the Dixie Highway, 21st Avenue FEC rail corridor and the ATK/SFRV corridor.

This educate, warn, enforce strategy will be implemented as follows:

On the FEC line, Two (2) officers per day, five (5) days a week, in staggered four (4) hour blocks, for six (6) months. \$64.00 per hour average OT rate = \$64,000. This will provide 1000 man hours to conduct encounters, enforcement, and data collection.

On the ATK/SFRV line, Two (2) officers will work in four (4) hour blocks, twice a month for the duration of the program. \$64.00 per hour average OT rate = \$6,144. This will provide an additional 96 man hours to conduct encounters, enforcement, and data collection.

This level of enforcement at varying times and days will give the impression of omnipresence to deter trespassing and reckless behavior. Although not funded by the grant; enforcement will be combined with educational efforts and a public information campaign to inform the public of our efforts and the importance of railroad safety.

Summation

Again, the purpose of this 6 months, 1,096 man hour enforcement and educational campaign will be to; maintain such a visible presence, underscored with constant repeated safety messaging, that it influences the behavior of the community and creates a long lasting reduction in the amount of trespassing along the rail-line, as well as to reduce rail-related deaths. As a city with a disproportionately high number of deaths in a county which is nationally ranked in railroad casualties, the pilot grant program being awarded to the City of Hollywood would have a positive influence in reducing future railroad casualties.

All data obtained from the activities performed in this Pilot Grant Program will be recorded and reported to the FRA as required. We seek to partner with those with a vested interest in railway safety and have received letters of support in reference to our grant application.

Letters of support



Michail Grizkewitsch,
Office of Railroad Safety
Federal Railroad Administration
1200 New Jersey
Avenue SE, Room W33-446,
Washington, DC 20590

12-1-19

Mr. Grizkewitsch,

I am writing this letter in support of Hollywood Police Department for their application to assist with enforcement of trespassing on the Tri-Rail Corridor. I believe that this grant will greatly impact the community and reduce trespassing incidents on the corridor.

HTSI would like to express our full cooperation and will participate in this project. HTSI has information, statistics, and knowledge which we can share, to assist law enforcement in identifying "hot spots" on the corridor. In addition, we would love to be part of a task force or team working together to reduce trespass incidents.

We fully support this noble initiative taken by the Hollywood Police Department. We are ready to work together and make this project successful. Your consideration and support towards this grant proposal will be appreciated.

As HTSI is the current Operator, Dispatch, and Maintenance of Equipment contractor for Tri-Rail, I offer my support to this project as the General Manager of HTSI. If you need my assistance, please feel free to contact me.

Edward Byers
General Manager
Herzog Transit Services Inc.
786-878-5851
9400 NW 37th AVE,
Miami, FL 33147



**SOUTH FLORIDA
REGIONAL
TRANSPORTATION
AUTHORITY**

801 NW 33rd Street | Pompano Beach, Florida 33064 | P 954-942-7245 | F 954-788-7961 | www.sfrta.fl.gov

December 1, 2019

Mr. Michail Grizkewitsch
Office of Railway Safety
Federal Railroad Administration
1200 New Jersey Avenue S.E.
Washington, D. C. 20590 - 0001

Dear Mr. Grizkewitsch:

This correspondence is to express support of the Hollywood Police Department for their application to assist with enforcement of trespass violators on the Tri-County Rail Corridor. The South Florida Regional Transportation Authority (SFRTA) and G4S Secure Solutions, USA are currently engaged in conjoint efforts to reduce the incidents of trespass violations; however, assistance from law enforcement is needed for the purpose of enforcement of trespass statutes. The SFRTA has experiencing an increased rate of trespasser casualties on the 71-mile rail corridor and it has become necessary to increase proactive measures to reduce problems created by trespassers.

G4S is a willing participant in this project and can be of invaluable assistance to law enforcement based on our knowledge of the rail corridor and critical trespass locations. In addition, we are eager to be a part of a task force or teams working conjointly to reduce trespass incidents, as well as ensuring the safety of our law enforcement associates while completing this task.

Lastly, we fully support this noble initiative taken by the Hollywood Police Department. Your favorable support towards this grant proposal will be appreciated.

Allen Yoder
Director of Safety and Security



G4S. Secure Solutions/USA
6499 Powerline Road Suite 300
Fort Lauderdale FL 33309-2044
Telephone: 954.771.5005
Fax: 954.771.5408

December 1, 2019

Mr. Michail Grizkewitsch
Office of Railway Safety Federal
Railroad Administration 1200 New
Jersey Avenue S.E. Washington,
D. C. 20590 — 0001

Dear Mr. Grizkewitsch:

This correspondence is to express support of the Hollywood, FL Police Department for their application to assist with enforcement of trespass violators on the Tri-County Rail Corridor. The South Florida Regional Transportation Authority (SFRTA) and G4S Secure Solutions, USA are currently engaged in conjoint efforts to reduce the incidents of trespass violations; however, assistance from law enforcement is needed for the purpose of enforcement of trespass statutes. The SFRTA has experiencing an increased rate of trespasser casualties on the 71 mile rail corridor and it has become necessary to increase proactive measures to reduce problems created by trespassers.

G4S is a willing participant in this project and can be of invaluable assistance to law enforcement based on our knowledge of the rail corridor and critical trespass locations. In addition, we are eager to be a part of a task force or teams working conjointly to reduce trespass incidents, as well as ensuring the safety of our law enforcement associates while completing this task.

Lastly, we fully support this noble initiative taken by the Hollywood, FL Police Department. Your favorable support towards this grant proposal will be appreciated.

Respectfully,

A handwritten signature in blue ink, appearing to read 'MPB', followed by a long horizontal flourish.

Mr. Michael P. Boss
General Manager, G4S Secure Solutions
Ft. Lauderdale, FL



More People & Growth • Create Jobs • Strengthen Communities

December 13, 2019

Mr. Michall Grizkewitsch
Office of Railway Safety
Federal Railroad Administration
1200 New Jersey Avenue S.E.
Washington, D.C. 20590-0001

**Subject: Support for the City of Hollywood's application for Railroad
Trespassing Enforcement Grant Program**

I am writing you to express the Broward Metropolitan Planning Organization's (MPO) support for the City of Hollywood's Railroad Trespassing Enforcement Grant Program application.

Broward County has the highest rate of trespasser fatalities in the state of Florida. The Broward MPO has adopted the state of Florida's Vision Zero goal for vehicle induced pedestrian fatalities. In order to achieve our goals and the State's goals, we are supportive of a program which aims to reduce fatalities.

In our effort to reduce fatalities, the Broward MPO works with our partners to apply the five E's of Safety: Education, Engineering, Environment, Emergency care of road accident victims, and Enforcement. The grant supports the Enforcement aspect by allowing the city to enhance monitoring activities along the rail corridor.

We fully support the City of Hollywood's application and look forward to meeting our collective of eliminating pedestrian fatalities.

Sincerely,

Greg Stuart
Executive Director
Broward MPO

Chair

Bryan Calabro

Vice Chair

Frank C. Griss

Deputy Vice Chair

Patricia Good

Members / Alternates

Margaret Barnes
Mikael Backstrom
Richard Blattner
Michael Carr
Howard P. Clark, Jr.
Yvette Colbourne
Beam Furr
Bill Ganz
Tom Green
Bill Harris
Dale V.G. Holmes
Christine Hunschofsky
Byron Jaffe
Sandy Johnson
Eric H. Jones, Jr.
Michele Lazarow
Irene Kirdany
Robert L. McKinza
Benny Moss
Debra Placko
Max Pulcini
Tim Ryan
Denise "Dee" Schroeder
Barbara Sharieff
Joshua Simmons
Joanne Simone
Erick Sokolow
Lawrence A. Soffel
Lynn Stoner
Dean J. Trantolis
Michael Udine
Beverly Williams
Ana M. Zaldivar

Executive Director

Gregory Stuart

General Counsel

Alan Gabriel

Trade Center South | 100 West Cypress Creek Road, Suite 650 | Fort Lauderdale, FL 33309-2181 | BrowardMPO.org

For complaints, questions or concerns about challenges or violations that ensure for equal housing under the Americans with Disabilities Act, please contact Elin Lydrak, Title V Coordinator at (954) 876-0959 or lydrak@browardmop.org