

[illegible]**GRIFFIN & 40TH
RACETRAC
MARKET****#1365**

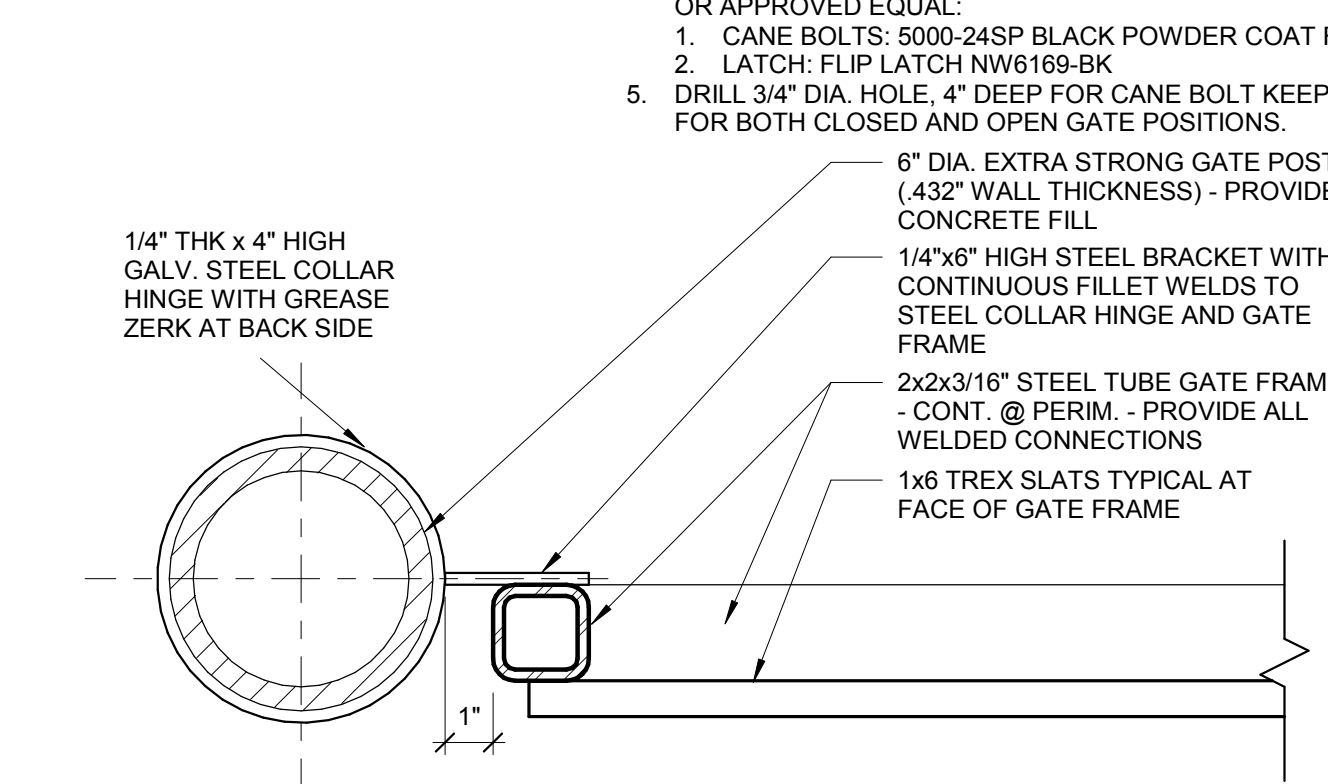
SPB NO. - DATE -

PROFESSIONAL SEAL



A011

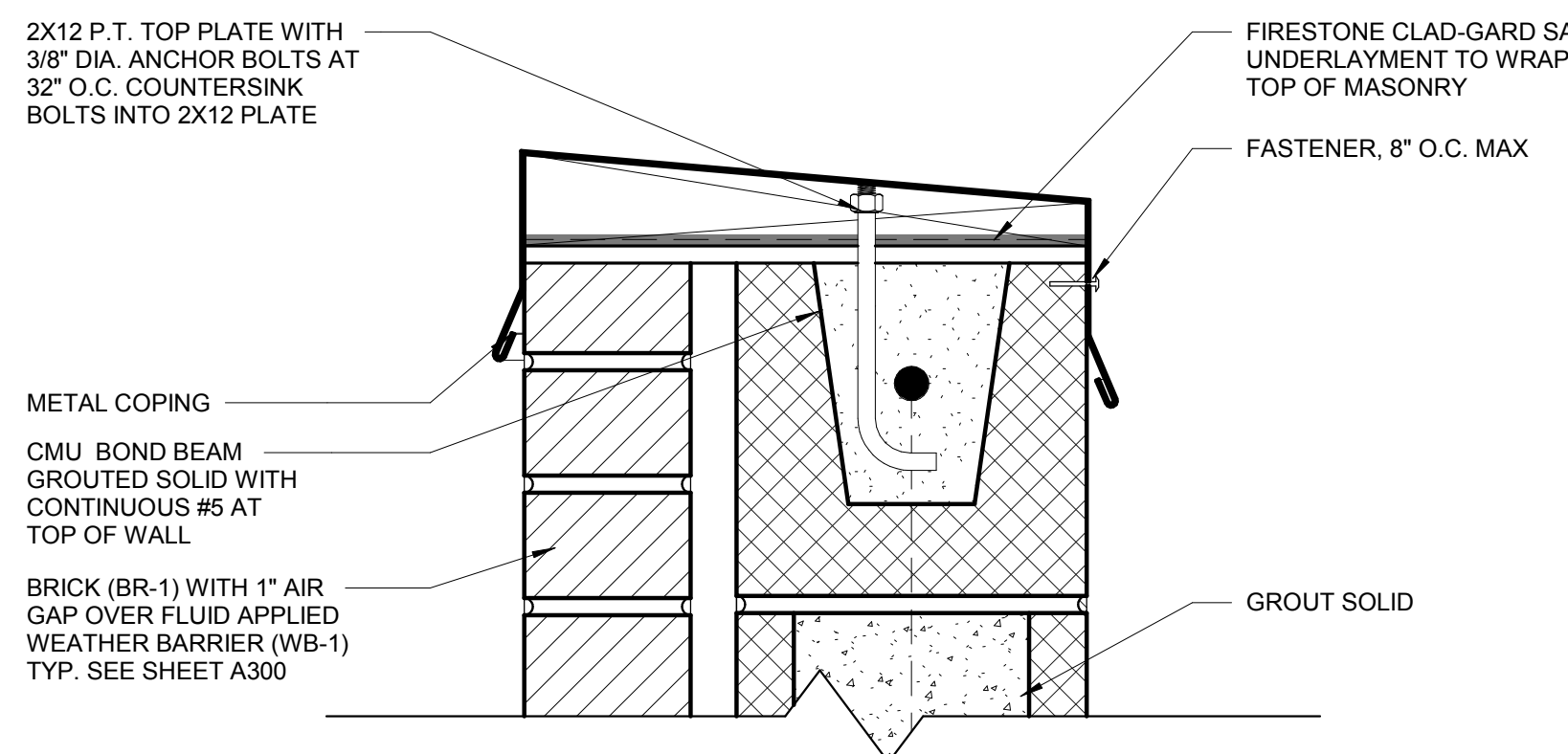
PRELIMINARY DRAWING



Technical drawing showing a cross-section of a wall and slab connection. The drawing includes the following details and dimensions:

- METAL COPING**: Indicated at the top of the wall.
- 8" - 0" A.F.F. T.O.M (CMU)**: Dimension for the top of the masonry unit.
- CMU BOND BEAM**: Indicated at the top of the wall.
- GROUTED SOLID WITH CONTINUOUS #5 AT TOP OF WALL**: Indicated at the top of the wall.
- CMU CORNER UNITS PAINTED EP-1**: Indicated at the corner of the wall.
- INTERIOR CMU FINISH OF DUMPSTER TO BE PAINTED (EP-1) TO MATCH BOLLARD AT DUMPSTER**: Indicated on the interior wall finish.
- BRICK SOLDIER COURSE**: Indicated on the exterior wall finish.
- 6" CONCRETE SLAB WITH 6X6 W2.9X2.9 WWF - TYP.**: Indicated for the concrete slab.
- #5 BARS AT 10" O.C.**: Indicated for the reinforcement bars.
- TOP OF GRADE - SEE CIVIL DRAWINGS**: Indicated for the ground level.
- 0" - 0" A.F.F. T.O. SLAB**: Dimension for the top of the slab.
- (4) #5 CONT.**: Indicated for the continuous reinforcement bars.
- 3" CLEAR**: Dimension for the clear height of the slab.
- 1'-4" F.O. CMU**: Dimension for the face of the concrete masonry unit.
- 2'-0"**: Dimension for the width of the slab.
- 10"**: Dimension for the width of the slab.
- TO F.O. SLAB**: Dimension for the face of the slab.
- 3'-4"**: Dimension for the total width of the slab.

PRELIMINARY DRAWING



5
A011

METAL COPING

PT WOOD BLOCKING

8'-0" A.F.F.
T.O.M. (CMU)

CMU BOND BEAM
GROUTED SOLID WITH
CONTINUOUS #5 AT
TOP OF WALL

INTERIOR CMU FINISH OF
DUMPSTER TO BE
PAINTED EP-1 TO MATCH
BOLLARD AT DUMPSTER

BRICK SOLDIER
COURSE

BRICK (BR-1) WITH 1" AIR
GAP OVER FLUID APPLIED
WEATHER BARRIER (WB-1)
TYP. SEE SHEET A300

1" THINK BY 10"
CAVITY DRAINAGE
MATERIAL

THROUGH WALL FLASHING.
AND CELLULAR WEEP
HOLES AT 24" O.C. MAX

6" CONCRETE SLAB
WITH 6X6 W2.9X2.9
WWF - TYP.

#5 BARS AT 10" O.C.

TOP OF GRADE - SEE
CIVIL DRAWINGS

0'-0" A.F.F.
T.O. SLAB

(4) #5 CONT.

3"
CLEAR

1'-4" F.O. CMU

2'-0"

10"

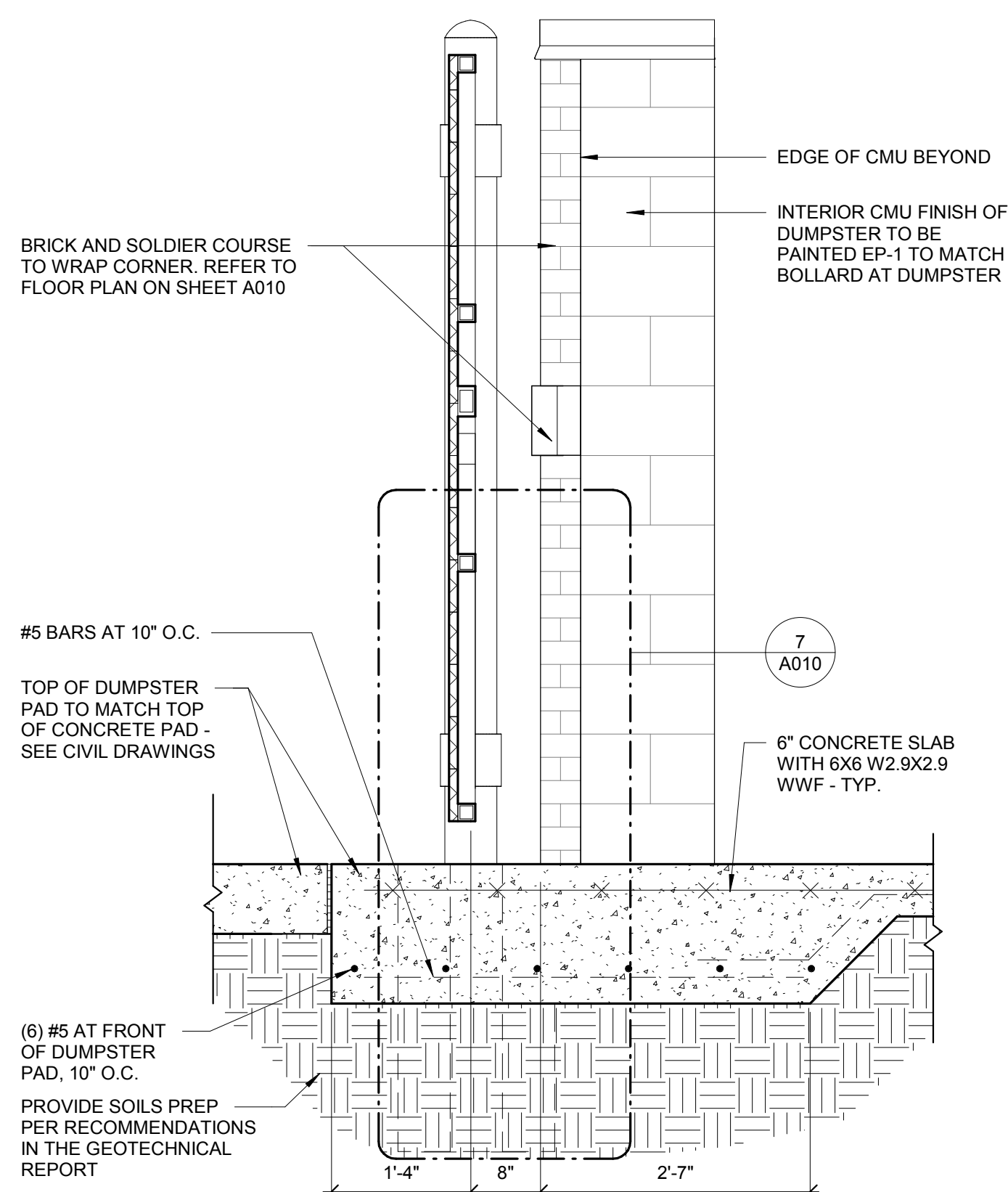
3'-4"

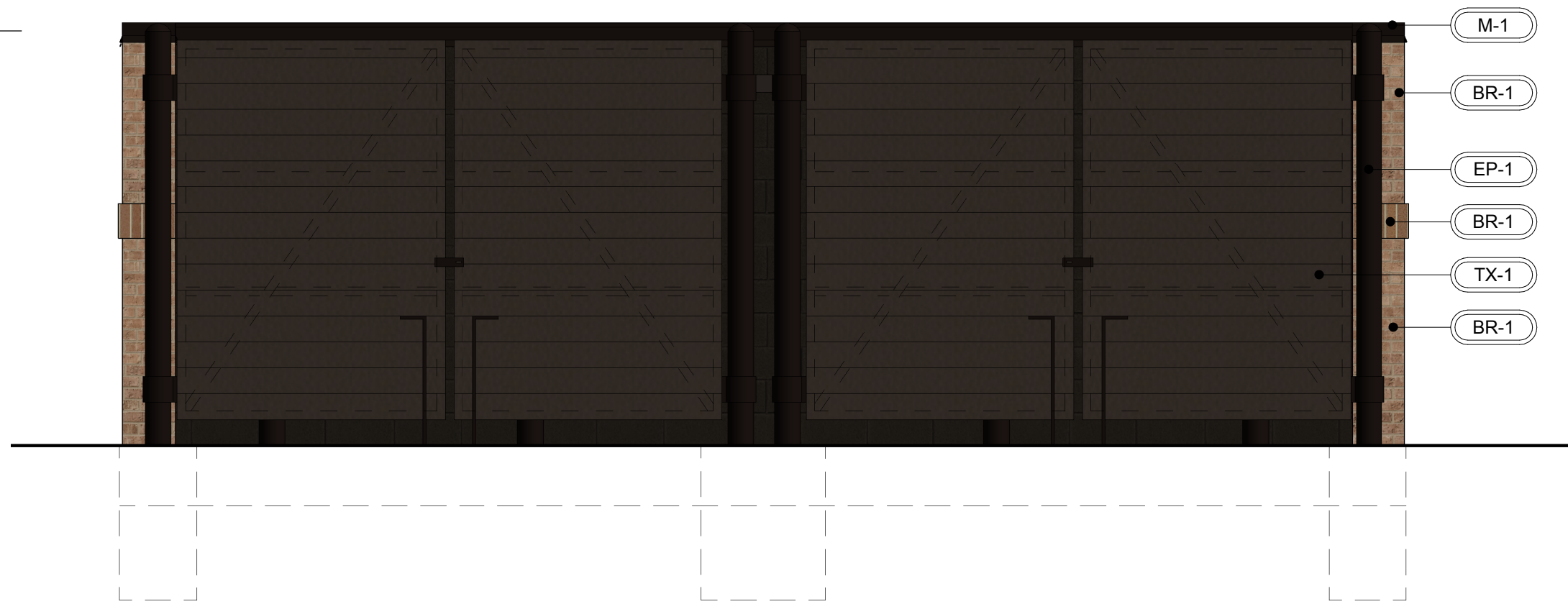
TO F.O. SLAB

9 GAUGE HOT DIPPED
GALVANIZED
HORIZONTAL JOINT
REINFORCING "LADDER"
TYPE @ 16" O.C.

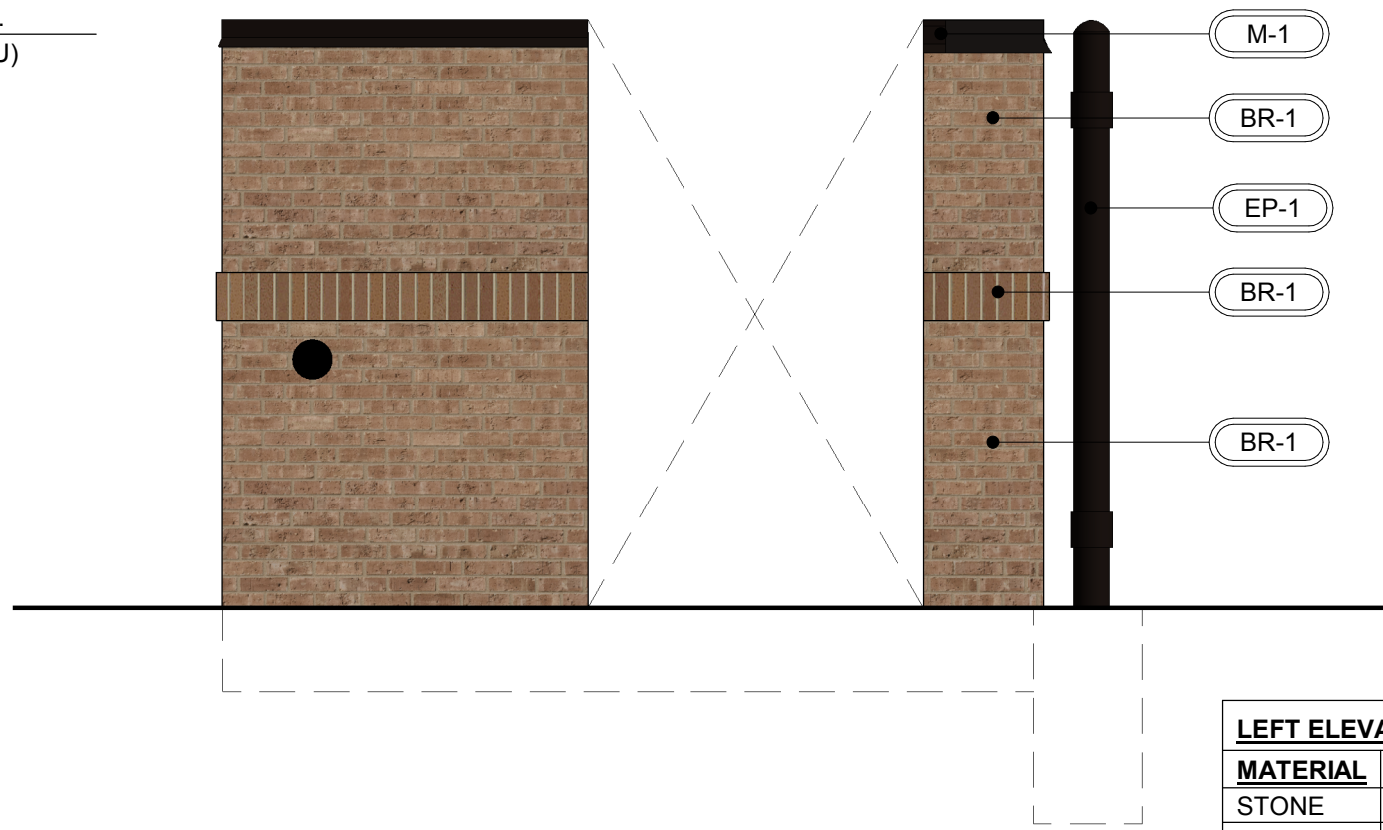
8" CMU WITH FILLED
CELLS WITH (1) #5 BAR
AT 32" O.C. CENTERED IN
WALL - 2500 PSI MIN.
COMPRESSIVE
STRENGTH GROUT - SEE
DUMPSTER PLANS FOR
ADDITIONAL
REINFORCEMENT NOTES

PRELIMINARY DRAWING

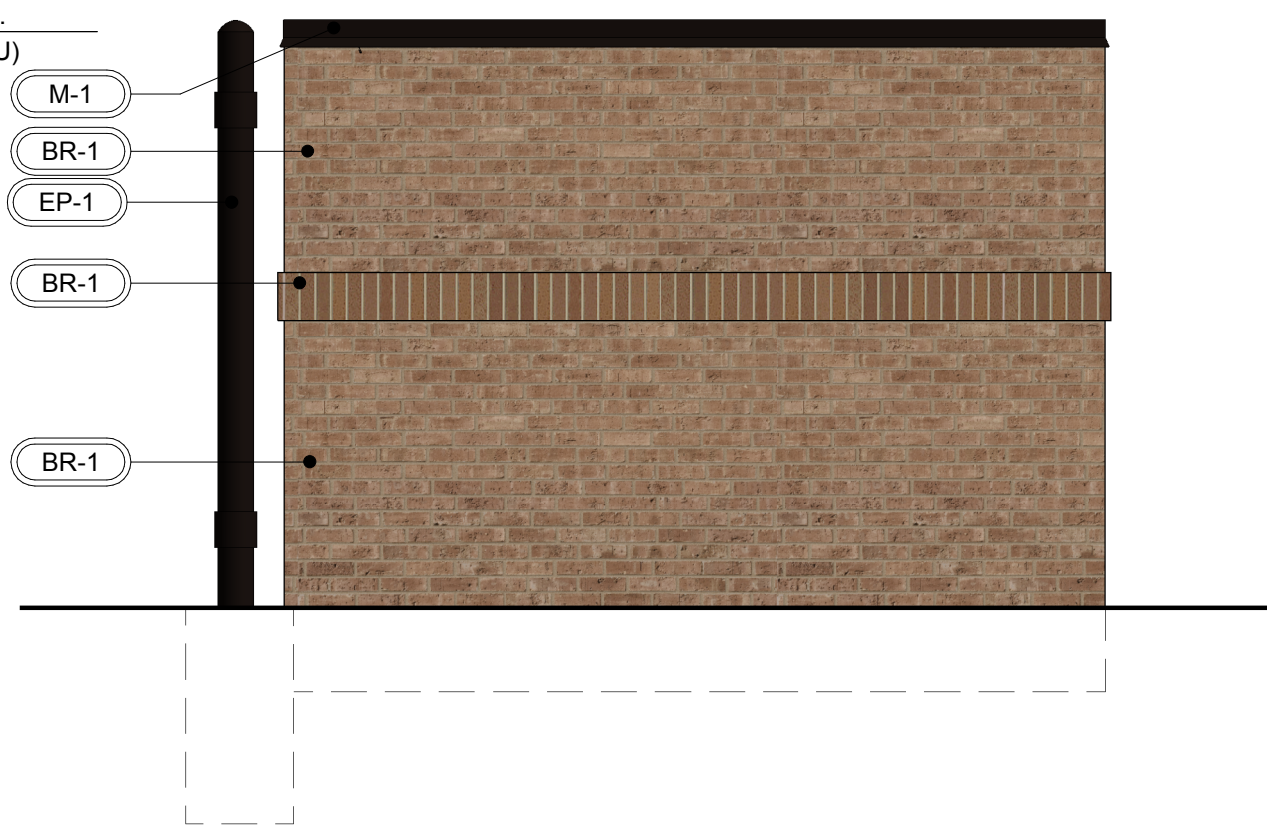




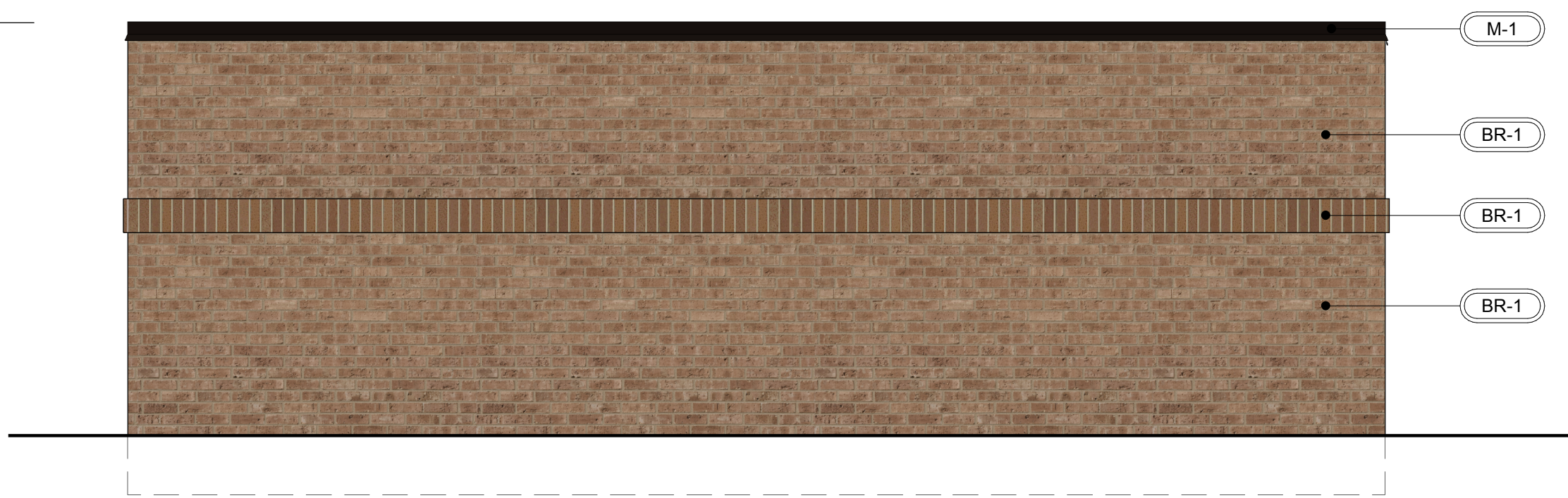
5 DUMPSTER ENCLOSURE FRONT ELEVATION
3/8" = 1'-0"



4 DUMPSTER ENCLOSURE LEFT ELEVATION
3/8" = 1'-0"



3 DUMPSTER ENCLOSURE RIGHT ELEVATION
3/8" = 1'-0"



2 DUMPSTER ENCLOSURE REAR ELEVATION
3/8" = 1'-0"

PRELIMINARY DRAWING