



Pinnacle 441 – Phases I and II Development Sites



PINNACLE
COMMITTED TO EXCELLENCE

Proposed "Pinnacle 441"



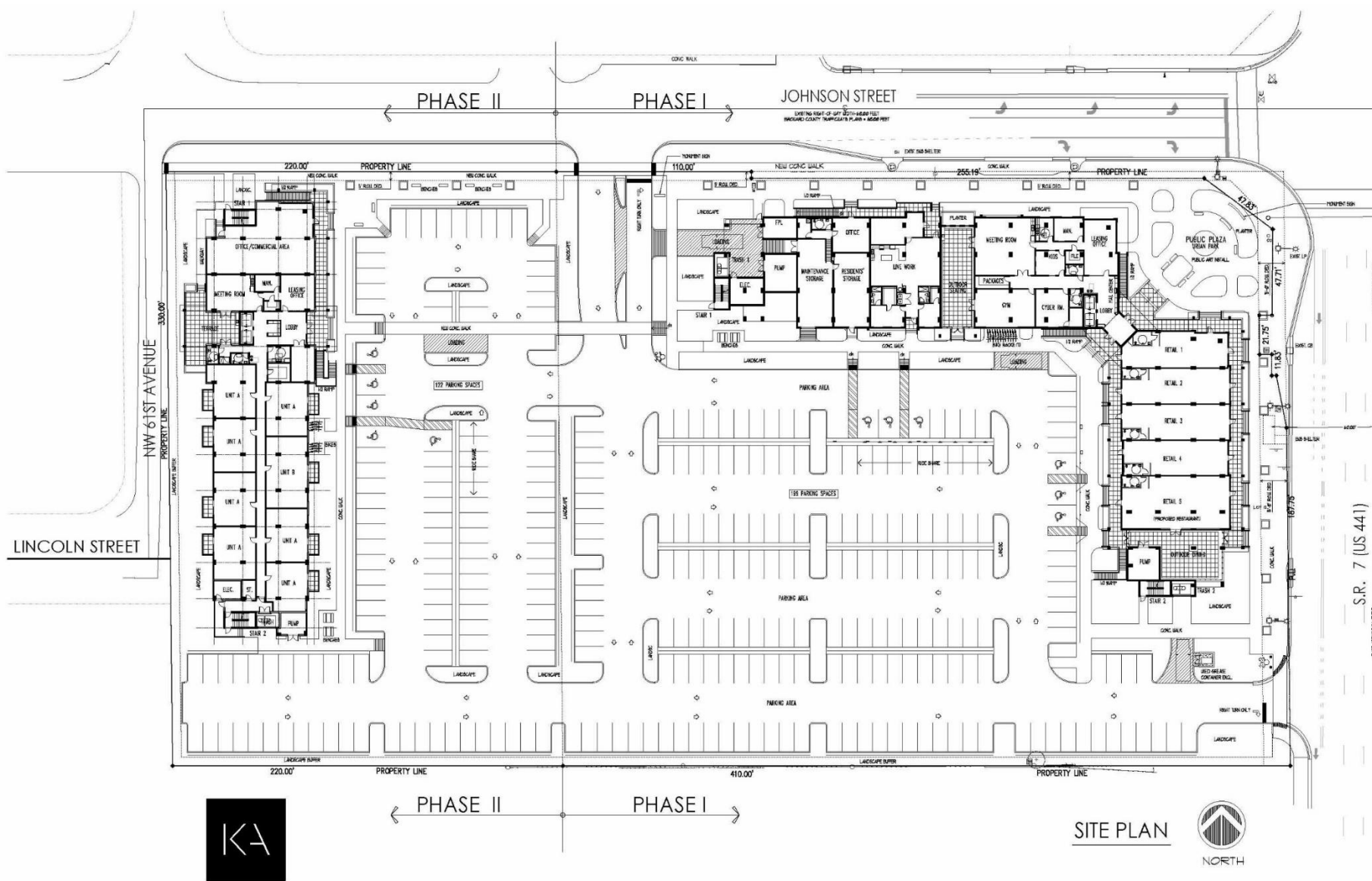


“Pinnacle 441” – A Mixed Use, Mixed Income Community

- Located at the southwest corner of SR 7/US 441 and Johnson Street
- Phase 1 of 113 units has been awarded 9% Housing Tax Credits by Florida Housing
- Blend of one, two and three bedroom options, including one unique “live/work” space
- 8 stories + 6,000 square feet of service retail fronting SR 7/US 441
- Amenities and features typical of market-rate rentals
- Energy efficient & “green” certified
- Homebuyer incentive program
- Expected groundbreaking in 1st quarter of 2022

Pinnacle 441, Phase 2

Our Integrated Approach



- Additional 100 units proposed, bringing the total number of units in both phases to 213 units
- Redevelopment of existing Royal Hawaiian mobile home park
- Critically-needed affordable housing to support deficit of same in western Hollywood, and to support the redevelopment of SR 7/US 441 corridor
- Additional 2,000 square feet of office/retail offered

