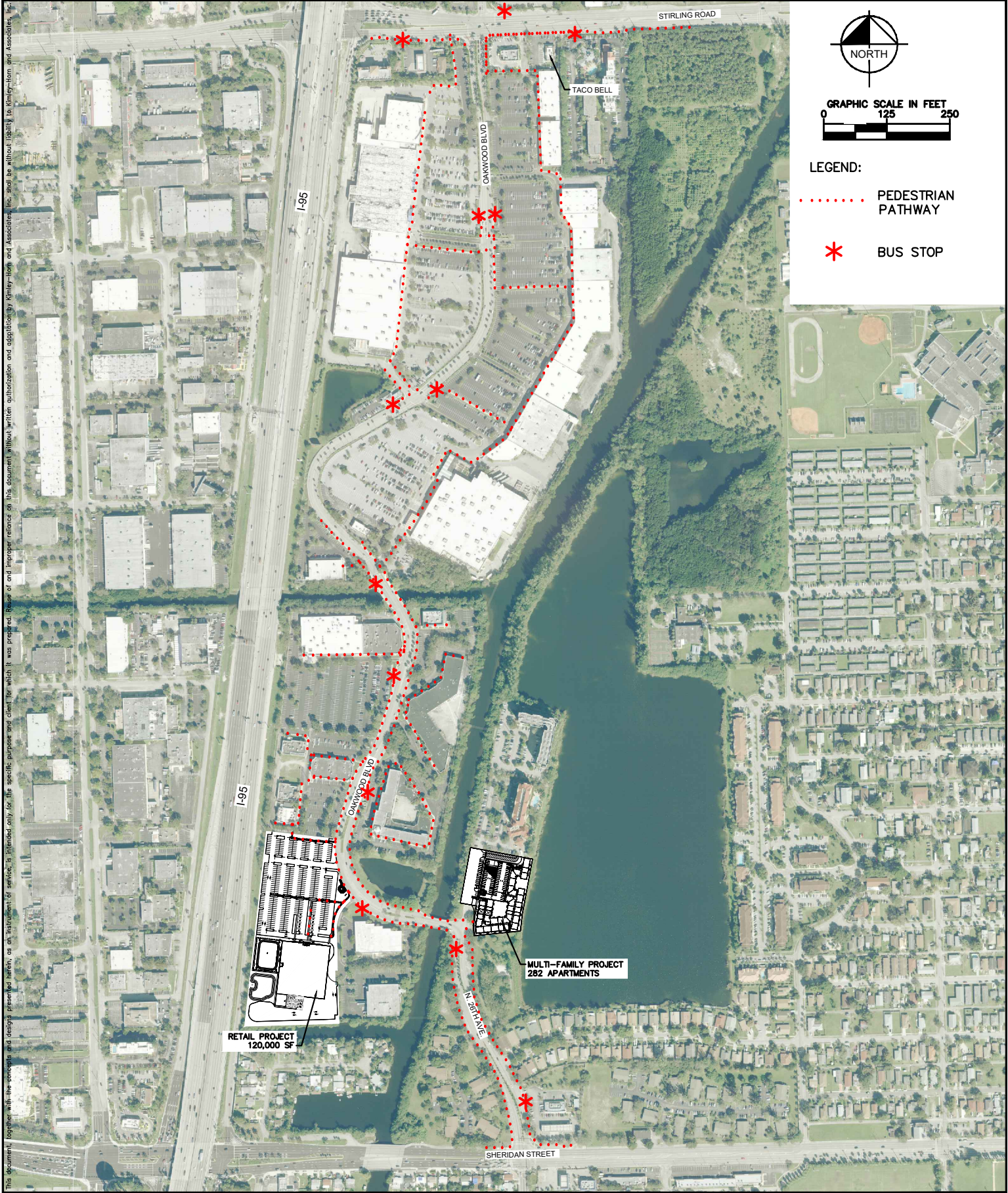


Plotted By: Schulz, Ryan Sheet Set: Kha Layout: 8.5x11 June 12, 2024 02:35:15pm K:\VRB_LDEV\147507039_Oakwood Plaza\CADD\Exhibits\Aerial Exhibits\PED ACCESS.dwg



Kimley»Horn

© 2024 KIMLEY-HORN AND ASSOCIATES, INC.
445 24TH STREET, SUITE 200, VERO BEACH, FL 32960
PHONE: 772-794-4100
WWW.KIMLEY-HORN.COM CA 00000696

OAKWOOD PLAZA SHOPPING CENTER

PEDESTRIAN ACCESS AND BUS
TRANSPORTATION EXHIBIT

SHEET NUMBER

EX-1

PROPOSED BUILDING

PARKING LOT

GRAPHIC SCALE IN FEET
0 20 40 80

SECTION A-A

NORTH

EXISTING BUILDING

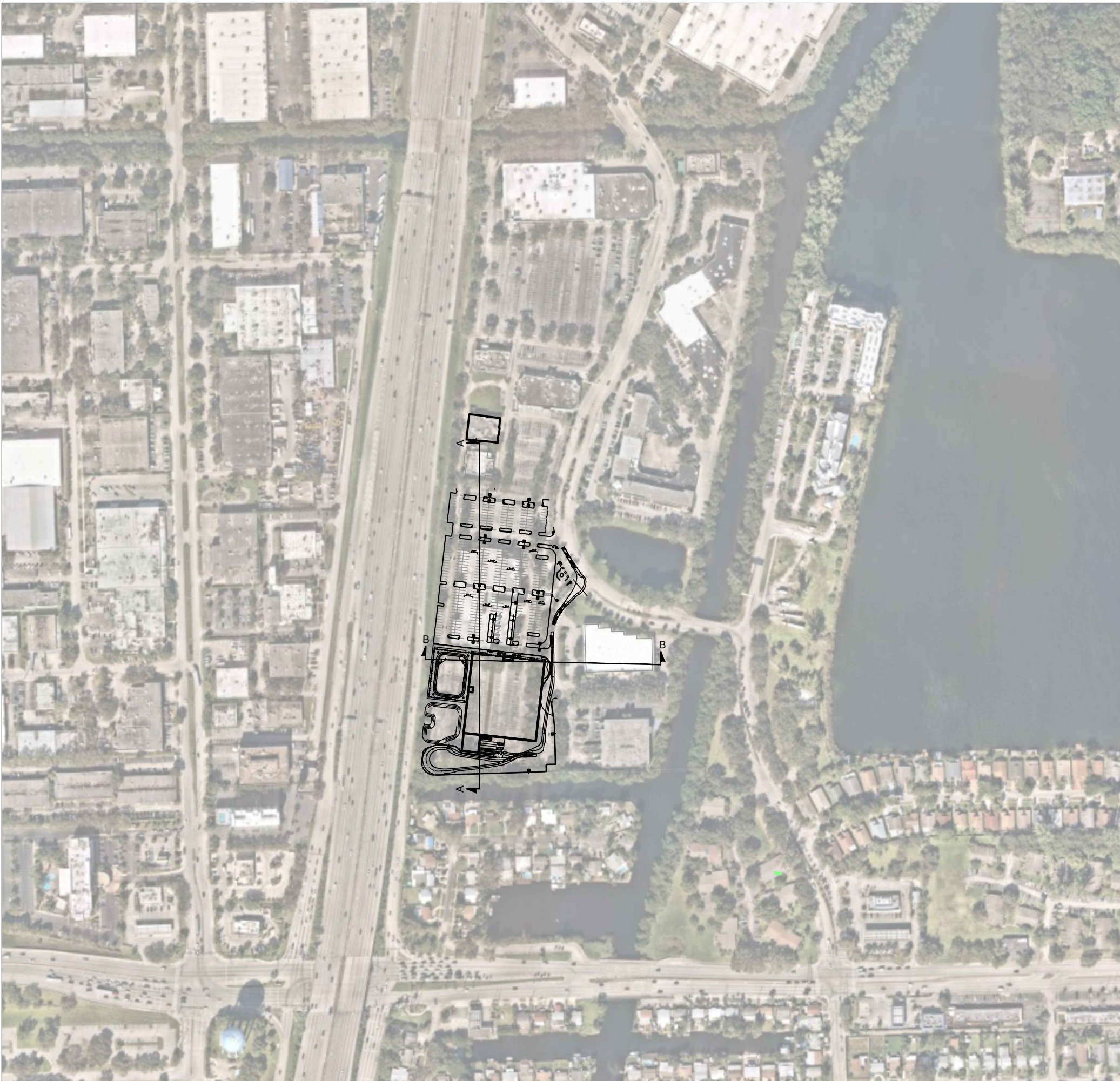
OAKWOOD LANE

PROPOSED BUILDING

GRAPHIC SCALE IN FEET
0 20 40 80

SECTION B-B

NORTH

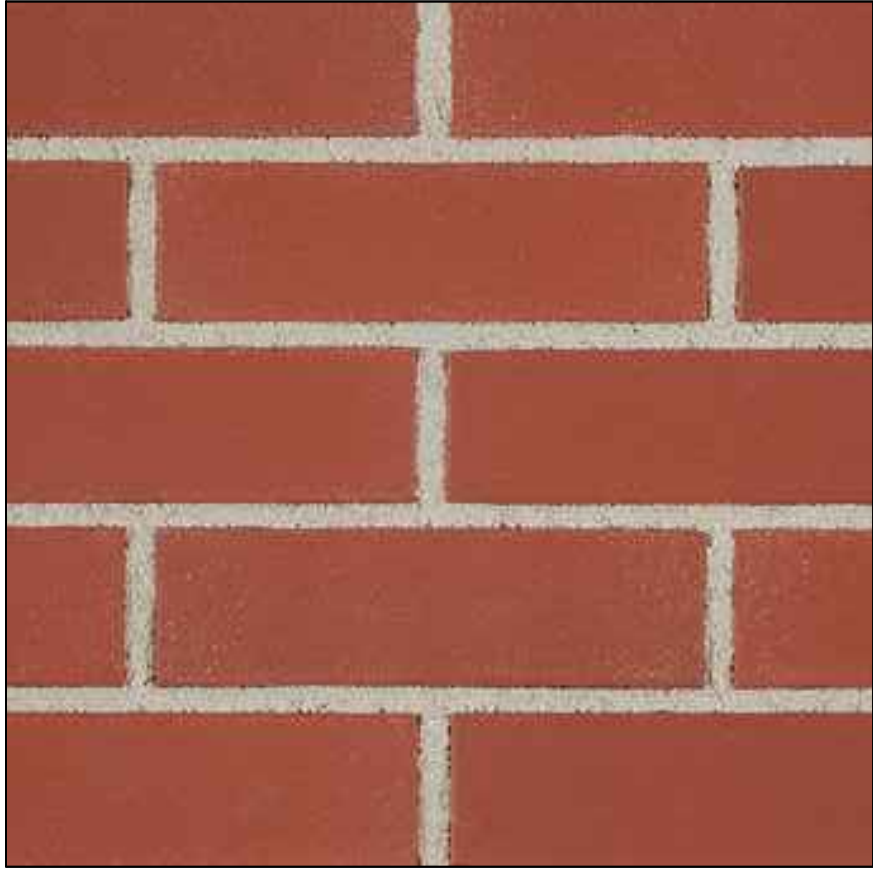


KEY MAP
N.T.S.

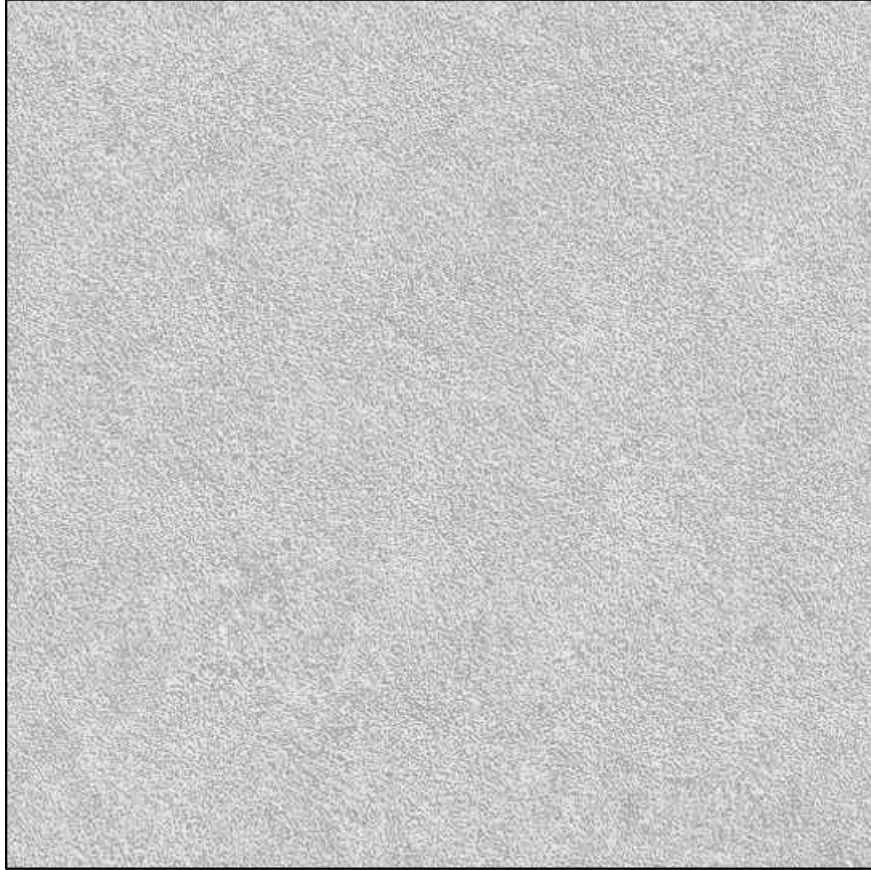
THIS ITEM HAS BEEN DIGITALLY SIGNED AND SEALED BY GREGORY D. WILFONG, P.E. ON THE DATE ADJACENT TO THE SEAL. PRINTED COPIES OF THIS DOCUMENT ARE NOT CONSIDERED SIGNED AND SEALED AND THE DIGITAL SIGNATURE MUST BE VERIFIED ON ANY ELECTRONIC COPIES.

[illegible]

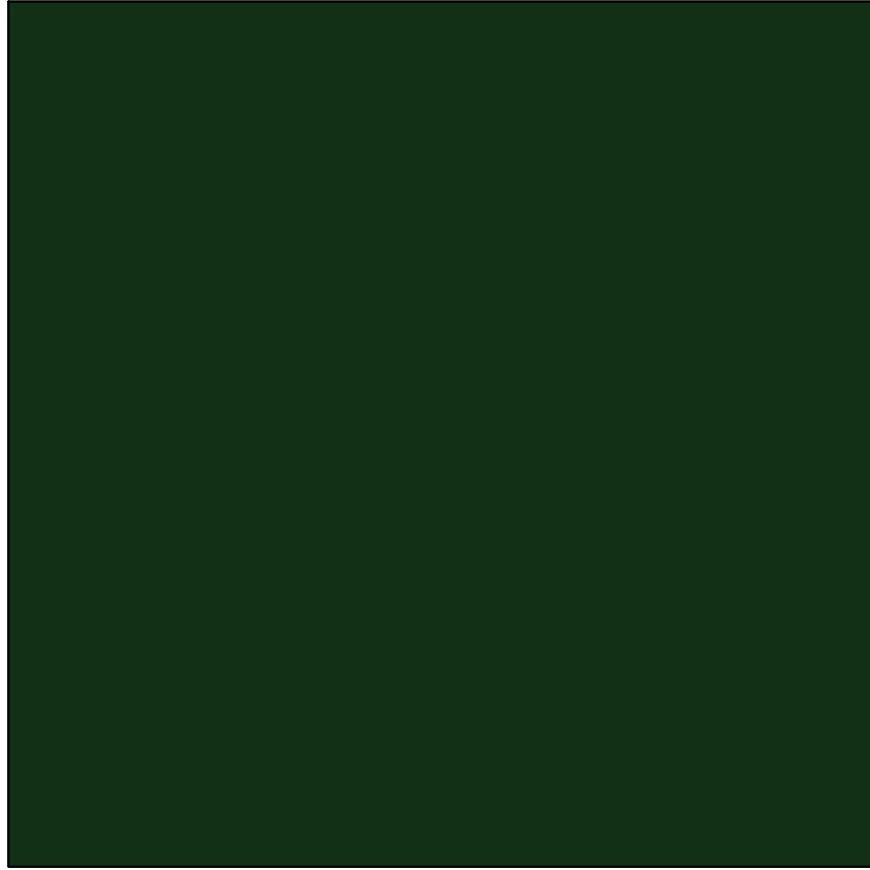
EXTERIOR MATERIALS	
ACM-1	RAINSCREEN METAL PANEL SYSTEM MANUF: OTADEL OR EQUAL PRODUCT: ENVELOPE 2000 RS OR EQUAL COLOR: MATCH KAWNEER HARTFORD GREEN
ACM-3	ACM PANELS - ALPOLIC COLOR: TO MATCH KAWNEER DARK BRONZE
BRK-1	1/2" MODULAR THIN BRICK REFER TO SPECIFICATION FOR ACCEPTABLE MANUFACTURERS MORTAR - SPEC MIX SM250 'ANTIQUE WHITE'
BRK-2	1/2" MODULAR THIN BRICK BELDEN BRICK COLOR: BLACK DIAMOND VELOUR MORTAR - SPEC MIX SM800 'BLACK'
CAP-1	COLUMN CAPITAL SUPPLIED BY VENDOR #24, INSTALLED BY G.C. COLOR: MATCH SW 0028 CAEN STONE
CONC	CAST IN PLACE CONCRETE WITH PARGED HAND RUBBED FINISH
CMU-3	SMOOTH-FACED, STANDARD GRAY DRYBLOCK, SEE SPEC. FINISH = POLYMER MODIFIED CEMENT PARGE, SEE SPEC.
CNPY-2	MAPES PREFABRICATED METAL CANOPY W/ TIE RODS OR APPROVED EQUAL COLOR = TO MATCH KAWNEER DARK BRONZE
CPNG-2	PREFINISHED METAL COPING, SEE SPECIFICATIONS COLOR = TO MATCH KAWNEER DARK BRONZE
DOOR-1	ALUMINUM SLIDING DOOR, SEE SPECIFICATIONS - COLOR= KAWNEER DARK BRONZE
DS-1	PRE-FINISHED METAL DOWNSPOUT - COLOR: TO MATCH KAWNEER DARK BRONZE
EIFS-1	1 1/2" EXTERIOR INSULATION FINISH SYSTEM, SEE SPECIFICATIONS COLOR = MATCH COLOR #449 BUCKSKIN, PEBBLE FINE FINISH
GLAZ-1	EXTERIOR CURTAINWALL COLOR= KAWNEER DARK BRONZE
LIGHT	EXTERIOR LIGHT FIXTURE - REFER TO REFLECTED CEILING AND ELECTRICAL PLANS, TYP.
PAINT-1	EXTERIOR PAINT, SEE SPECIFICATIONS COLOR = (P-78)
PAINT-2	EXTERIOR PAINT, SEE SPECIFICATIONS COLOR = MATCH RED BRICK (P-52) DSG BELDON
PAINT-3	EXTERIOR PAINT, SEE SPECIFICATIONS COLOR = TO MATCH (EIFS-2)
SIGN-1	INDIVIDUAL LETTER SIGNAGE w/ INTERNALLY ILLUMINATED LETTERS, SUPPLIED AND INSTALLED BY VENDOR #8
FILM	WINDOW SECURITY FILM; REFER TO A5.2



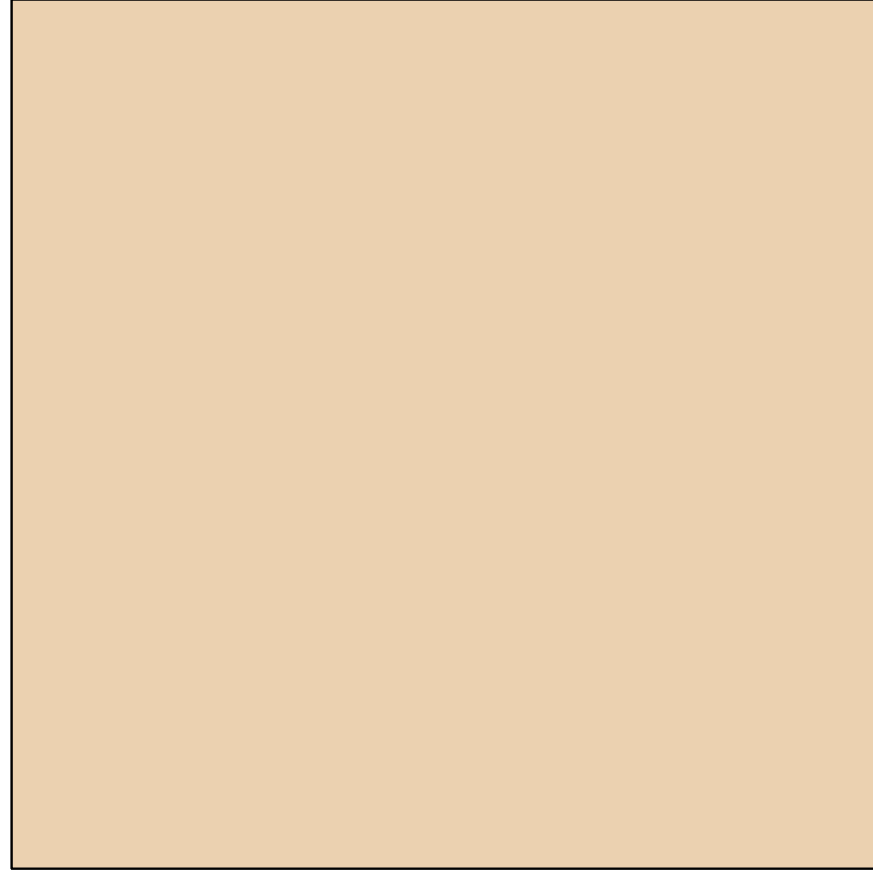
BRK-1



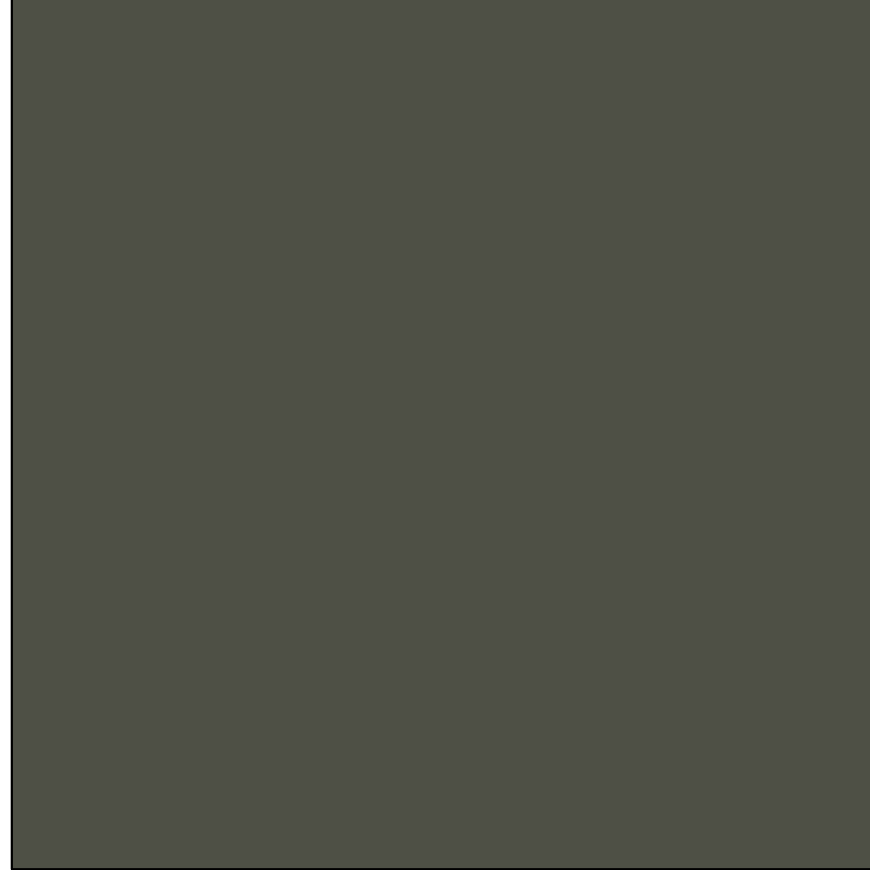
CONC



ACM-1



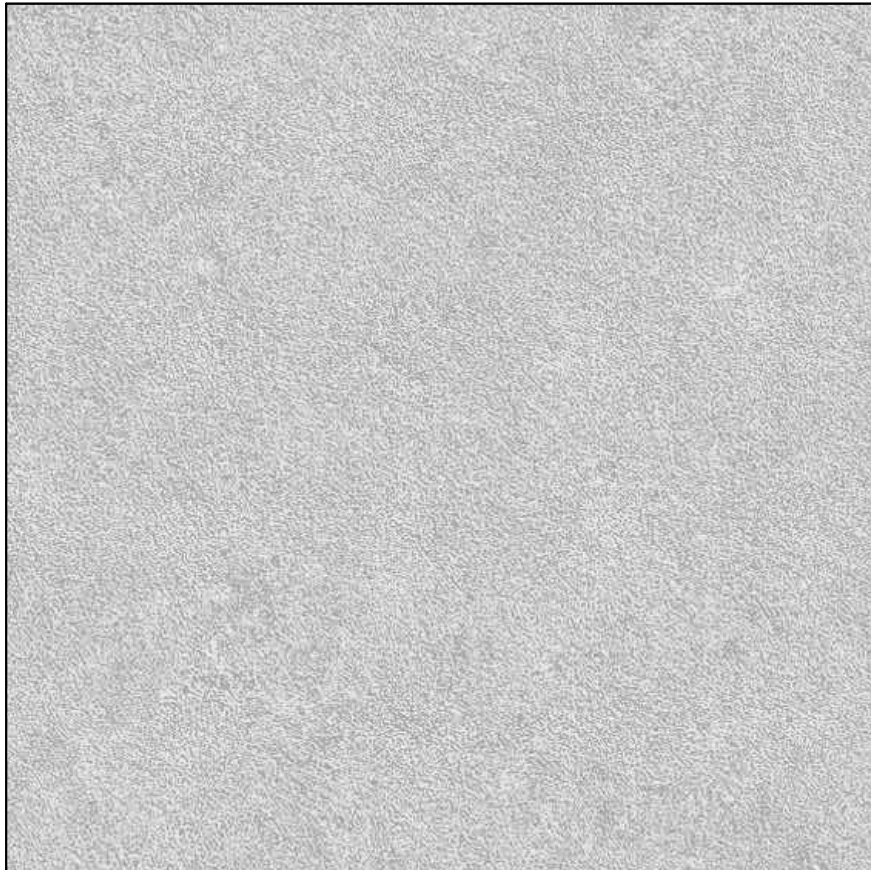
CAP-1



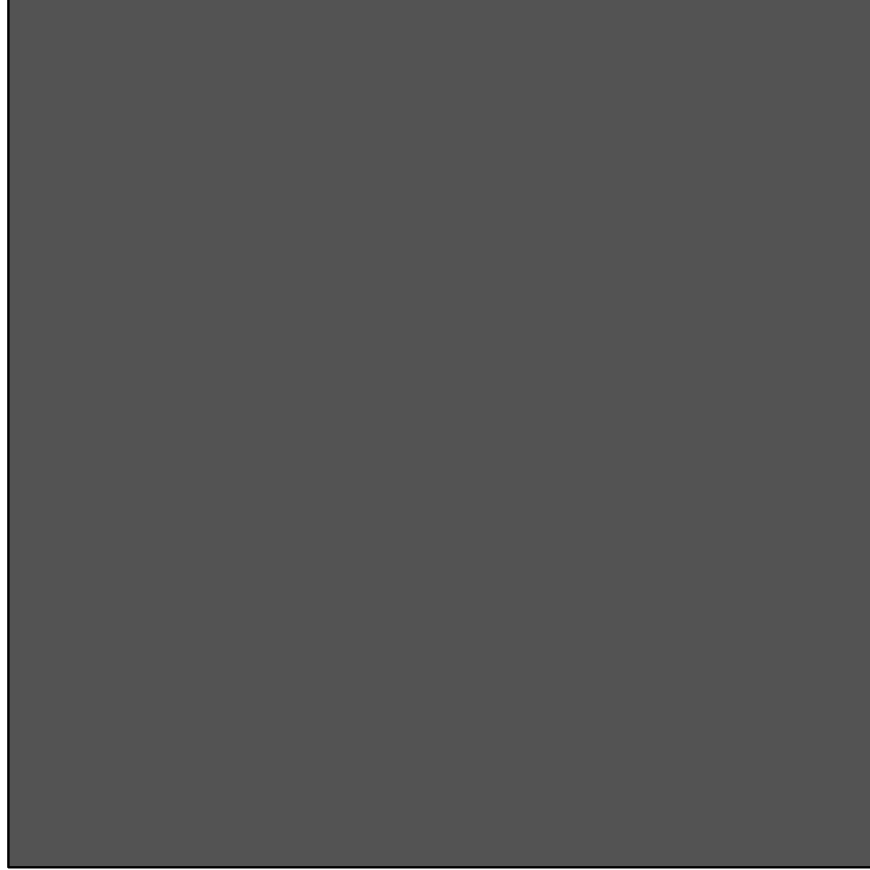
ACM-3 CNPY-2 CPNG-2 DOOR-1 DS-1 GLAZ-1



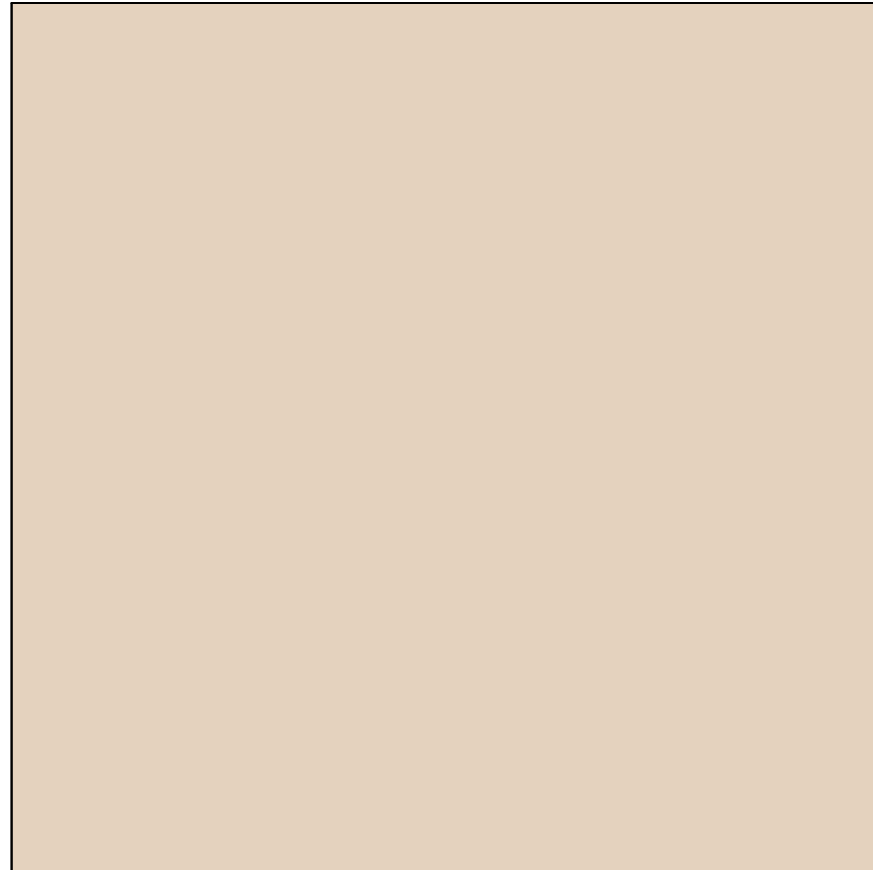
BRK-2



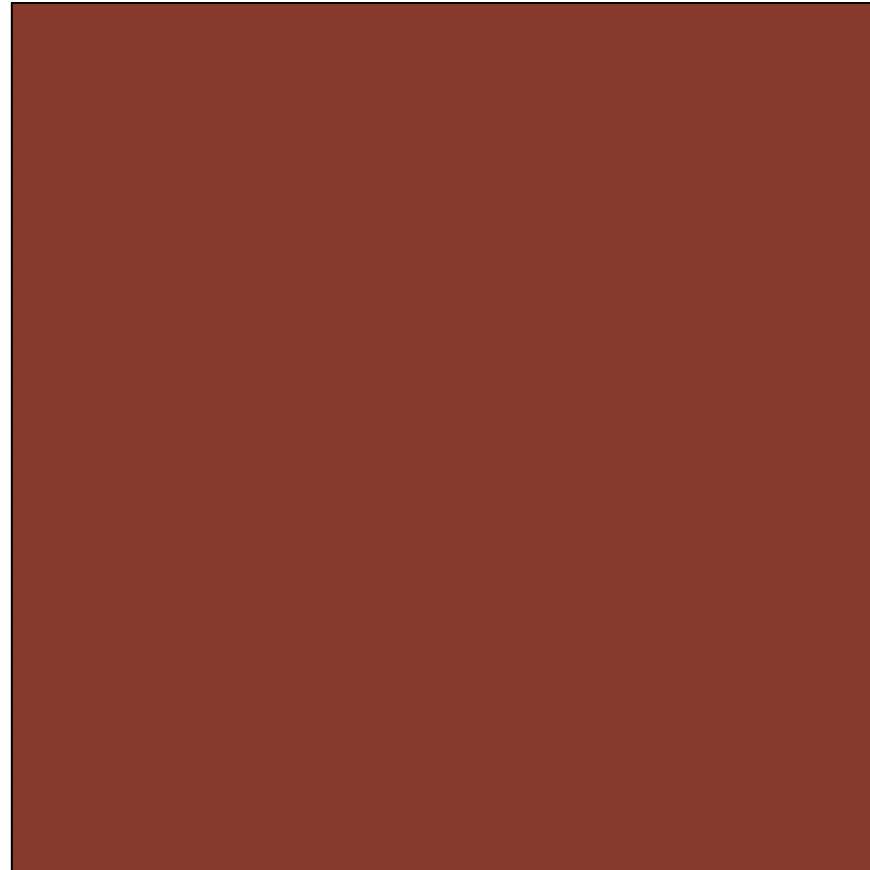
CMU-3



PAINT-1



EIFS-1 PAINT-3



PAINT-2

EXTERIOR MATERIAL LEGEND

SCALE	-
N.T.S.	

MATERIAL PALETTE

SCALE	-
DETAIL	N.T.S.



EXTERIOR ELEVATION
DETAIL

SCALE
1/8" = 1'-0"

NORTH

Seal:

A Project for:

RETAIL REDEVELOPMENT
OAKWOOD SOUTH RETAIL SHOPPING CENTER
2800 OAKWOOD BLVD.
HOLLYWOOD, FL 33020

Client:

KIMCO REALTY

1 OAKWOOD BOULEVARD, SUITE 70
HOLLYWOOD, FL 33020

Revisions:

CLIENT REVIEW 07-09-2024

No. Description Date

Project No.: 24.251.01

Drawn By: -

Reviewed By: -

Scale: AS NOTED

Date: 07-09-2024

Filename: -

Sheet Title:

PROPOSED
EXTERIOR
MATERIALS

Sheet #:

A301