

**Attachment II**  
Hollywood Diplomat Resort and Spa  
Parking Utilization Study



# **HOLLYWOOD DIPLOMAT RESORT AND SPA**

## Parking Utilization Study

December 3, 2015

**Kimley»»Horn**



## Contents

Overview .....	1
Existing Conditions .....	1
Existing Land Uses and Parking Requirements .....	1
Existing Parking Supply.....	2
Parking Occupancy Assessment.....	3
Off-Street Parking Code Review .....	6
Conclusion .....	6

## Tables

Table 1: Parking Ratios Approved in the Master Plan .....	2
Table 2: Existing Parking Supply Summary.....	2
Table 3: Parking Supply Allocation by Code.....	3
Table 4: Maximum Daily Peak Parking Occupancy Data by Month .....	4
Table 5: Parking Adequacy Summary (Excluding Condominium).....	6
Table 6: Off-Street Parking Code Review.....	6
Table 7: Proposed Amendment to Diplomat Planned Development Parking Ratios .....	7
Table 8: Percentage of Proposed Parking Supply by Land Use .....	7

## Appendices

Appendix A – Existing Requirements and Parking Supply

Appendix B – Parking Occupancy and Event Data



## OVERVIEW

Thayer Lodging Group, Inc., through THI VI Diplomat Holdings LLC (Owner), retained the services of Kimley-Horn and Associates, Inc. (Kimley-Horn) to perform a Parking Utilization Study at the Diplomat Resort and Spa (Diplomat), located at 3555 South Ocean Drive in Hollywood, Florida. The Parking Utilization Study evaluated the existing parking supply and demand conditions at the Diplomat to compare and redefine appropriate parking requirements by land use to meet parking demands of the existing and potential future development. The study was conducted in support of the Owner's application to amend the Alternative Parking Standards of the Planned Development Master Plan approved through Ordinance No. O-2000-31, Exhibit D.

Parking utilization data was obtained and reviewed for a four year period, between July 2011 and July 2015. Data was reviewed to identify parking adequacy patterns and verify the amount of parking currently required under normal operating conditions as well as during scheduled events occurring near and at the hotel. Results of this analysis concluded that the adopted parking requirements for the existing land uses associated with the Diplomat are higher than the actual demand generated for this site. The result is a large portion of the site designated for parking under the existing code is underutilized, even during peak times of the year with scheduled events occurring at the hotel.

Findings of this study recommend modifying the parking requirements for the 'Hotel Banquet Facilities' land use parking ratios adopted through Ordinance No. O-2000-31, Exhibit D. The proposed amendment reduces the existing 1 space per 60 square foot (SF), at a 65% accessory use reduction, to a proposed 1 space per 400 SF, with no accessory use reduction. The proposed change would reduce the total required number of parking spaces for the hotel banquet facilities land use from 1,394 spaces to 322 spaces, a difference of 1,072 parking spaces. The reallocation of the existing 1,072 underutilized parking spaces would be available to support future development under the existing code requirements.

The following sections detail the existing conditions evaluation, parking occupancy assessment, and land use code evaluation conducted for this study to support the proposed change.

## EXISTING CONDITIONS

### EXISTING LAND USES AND PARKING REQUIREMENTS

The existing parking supply for the Diplomat Resort and Spa is divided among multiple parking garages, including two levels of parking beneath the hotel, four levels of parking adjacent to the banquet hall/place of assembly, and eight levels of parking in two garages on the west side of Ocean Drive ("Landing Garages").

The parking beneath the hotel and banquet hall/place of assembly contains valet only parking spaces. The Landing Garages contains approximately 60,000 SF of retail area and provides only self-parking spaces. The resort contains 998 rooms and over 200,000 SF of banquet hall/place of assembly space.

The Diplomat Oceanfront residential tower, located north of the Diplomat Resort and Spa, at 3535 South Ocean Drive, is excluded from this parking study understanding the tower's parking garage is reserved for residents only.

Table 1 summarizes the existing land uses and parking requirements within the approved master plan, as part of Ordinance No. O-2000-31, Exhibit D.

**Table 1: Parking Ratios Approved in the Master Plan**

Use	Size	Standard per Adopted Master Plan	No. of Required Parking Spaces (1)
Hotel	1,000 rooms	0.68 spaces per room (2)	680 Spaces
Hotel Food/Beverage	14,616 SF	1 per 100 SF x 65% (3,4)	95 Spaces
Hotel Nightclub/Lobby Bar	6,593 SF	1 per 60 SF of floor area available for seating or dancing x 65% (4)	71 Spaces
Hotel Offices	15,582 SF	1 space per 250 SF x 65%	41 Spaces
Hotel Banquet Facilities	128,700 SF	1 space per 60 SF of area available for seating x 65%	1,394 Spaces
Retail (west of A1A)	60,639 SF	1 space per 220 SF	276 Spaces
Retail (east of A1A) At Hotel	1,508 SF	1 space per 220 SF x 65%	4 Spaces
Condominiums	135 Units	1.5 spaces per unit plus 1 space per 5 units (guest)	230 Spaces
<i>Total required parking of all uses</i>			2,791
<i>Total required parking excluding condominiums</i>			2,561

Notes to Parking Requirements:

- (1) All amounts rounded to nearest whole number.
- (2) Based upon ITE Parking Generation Manual.
- (3) Footage shown is gross including Kitchen/Circulation area.
- (4) These spaces are accessory uses within the Hotel and are charged at 65% of the normal Hollywood parking standards.
- (5) Includes 67,000 S.F. of leasable area.
- (6) 70% of this parking will be self-park. The ratio of valet to self-park may vary and is subject to Hotel Operations.

## EXISTING PARKING SUPPLY

Table 2 is a summary of the existing parking supply matrix provided on Sheet A4.00 Level P-1 Parking floor plans (parking level beneath hotel).

**Table 2: Existing Parking Supply Summary**

Location	No. of Spaces	No. of Spaces Excluding Condominium Parking
Hotel Parking	326	326
Condo Parking	230	-
Convention Center Parking	735	735
Landing Garages	1,505	1,505
Total	2,796	2,566

For the purposes of this study, the parking supply considered will be based on the existing parking plans excluding condominium parking (Table 2) at a total of 2,566 existing parking spaces, five parking spaces over the required amount. Reference Attachment A – Existing Requirements and Parking Supply for documents related to this section and provided by the Owner.

## EXISTING PARKING SUPPLY ALLOCATION BY LAND USE

The primary use at the Diplomat is the hotel and associated commercial/retail amenities. The hotel banquet hall use within the Diplomat is considered an accessory use of the hotel, used primary by event guest staying at the hotel. Per the existing parking requirements, outlined in Table 1 the required number of parking spaces for the hotel banquet hall accounts for over 54% of the total required parking supply for the site.

The percentage of the parking supply allocated specifically to the hotel banquet facility use is representative of a demand more consistent to what would be expected for a primary use rather than an accessory use. Table 3 outlines the percentages of the required parking supply allocated for each land use per the existing code.

**Table 3: Parking Supply Allocation by Code**

Use	Size	Unit	Adopted Master Plan Parking Rate		No. of Required Parking Spaces (1)	Percentage of Supply by Use
Hotel	1,000	Rooms	0.68 spaces per room (2)	680	Spaces	26.6%
Hotel Food/Beverage	14,616	SF	1 per 100 SF x 65% (3,4)	95	Spaces	3.7%
Hotel Nightclub/Lobby Bar	6,593	SF	1 per 60 SF of floor area available for seating or dancing x 65% (4)	71	Spaces	2.8%
Hotel Offices	15,582	SF	1 space per 250 SF x 65%	41	Spaces	1.6%
Hotel Banquet Facilities	128,700	SF	1 space per 60 SF of area available for seating x 65%	1,394	Spaces	54.4%
Retail (west of A1A)	60,639	SF	1 space per 220 SF	276	Spaces	10.8%
Retail (east of A1A) at Hotel	1,508	SF	1 space per 220 SF x 65%	4	Spaces	0.2%
<b>Total</b>				<b>2,561</b>	<b>Spaces</b>	<b>100.0%</b>

## PARKING OCCUPANCY ASSESSMENT

Parking management data associated with past hotel occupancy, parking validations, parking revenue, parking garage floor plans, parking supply, employee information, and City of Hollywood approved parking requirements were reviewed as part of the parking occupancy assessment. All daily peak occupancy totals provided by the client and presented within this section represent total parking entry information and do not represent a specific peak occupancy time during the day, only total number of cars parked throughout the entire day. Turnover and exit data for the parking facilities was not available.

Total daily parking occupancy data was provided by AAA Parking for the Landing Garages (self-park) and the hotel and banquet hall parking garages (valet parking) from July 1, 2011 to November 30, 2014. The data excluded employee parking. The current parking operator, Townepark, provided daily parking occupancy data for the Landing Garages and hotel and banquet hall parking garages, inclusive of visitor, employee, and monthly parking, from December 1, 2014 through July 19, 2015.



An employee parking ratio was calculated using the employee parking percentages from the occupancy data provided between December 1, 2014 and July 19, 2015. An employee parking ratio of 30% was applied to the parking data provided for July 1, 2011 through November 30, 2014 to account for the missing employee parking data.

Starting January 1, 2015, Townepark began leasing up to 200 parking spaces to an adjacent property, on a temporary basis, to accommodate displaced parking at the adjacent site. These monthly parking spaces were excluded from the daily peak parking occupancy values understanding they are not associated with resort demand and are provided on a temporary basis.

To determine the maximum daily parking occupancy totals for each month the total number of valet, self-parking and employee parking occupancy counts per day were combined. The highest maximum daily peak parking occupancy by month, recorded between July 2011 and July 2015 was in May 2015, with a total of 1,738 recorded vehicles parking throughout the day. An average maximum daily peak of 1,083 was calculated over the four year period. Table 4 provides a summary by month of the maximum daily peak parking occupancy between July 1, 2011 and July 19, 2015.

**Table 4: Maximum Daily Peak Parking Occupancy Data by Month**

Year	Month	Maximum Daily Peak Parking Demand by Month
2011	July	1,069
	August	941
	September	981
	October	941
	November	1,044
	December	1,066
2012	January	930
	February	1,064
	March	901
	April	866
	May	1,142
	June	970
	July	1,072
	August	1,049
	September	1,050
	October	849
	November	800
	December	832
2013	January	830
	February	940
	March	830
	April	1,065
	May	1,678
	June	1,198
	July	1,188
	August	1,416
	September	992
	October	909
	November	1,206

	December	1,048
2014	January	809
	February	873
	March	923
	April	887
	May	1,306
	June	1,139
	July	1,067
	August	1,336
	September	756
	October	982
	November	987
	December	1,417
2015	January	1,114
	February	1,233
	March	1,463
	April	1,431
	May	1,738
	June	1,572
	July	1,167
Average Maximum Daily Peak (July 2011-July 2015)		1,083

Days with significantly higher occupancy totals compared to the monthly average of 1,083 were evaluated individually to identify patterns in the demand. Not all recorded daily parking occupancy peaks occurred during known scheduled events at the hotel or during holidays as it would be assumed.

There are several examples within the four year period that demonstrate how the existing parking demand is lower than the required parking supply per code, specifically as it relates to the requirements for the hotel banquet facility. An example of how the parking demand onsite is less than what is required by code though a high attendance event was scheduled is demonstrated April 4-5, 2015. On April 4<sup>th</sup> and 5<sup>th</sup> there were two separate events held, one on each day. On April 4<sup>th</sup> a total of 5,735 people were recorded as using the hotel banquet facility and catering services and on April 5<sup>th</sup> a total of 1,925 people used the facilities. Both events parked the same number of vehicles, totaling 887 throughout the day, only 35% of the total parking supply.

One of the highest recorded hotel events that included the use of the banquet hall, catering services, and the hotel rooms were at full occupancy within the last four years occurred the week of January 26, 2015. A private conference for the Index group averaged 8,000 attendees over two days. During that week the total number of vehicles parked within one day peaked at 1,114. This assumes all vehicles that parked that day never left, as exit and turnover data was not recorded. This represents a worst case scenario. The total number of vehicles parked for the full day, during this event is lower than the 1,394 spaces required per code for the banquet facility land use, independent of the other uses for this site.

Both examples support the previous description of the banquet facility use on this site as not being the primary parking demand generator but an accessory use to the hotel, though it has the highest number of required parking spaces.

Table 5 provides a summary of parking adequacy comparing the existing parking supply to the required parking, maximum recorded daily peak, and average daily peak parking occupancy.

**Table 5: Parking Adequacy Summary (Excluding Condominium)**

	No. of Spaces	Parking Surplus
Required Parking	2,561	-
Existing Parking Supply	2,566	5
Maximum Recorded Peak Parking (May 2, 2015)	1,738	828
Average Daily Peak Parking (July 2011 – July 2015)	1,083	1,483

Under the existing parking requirements, even during peak season with the combination of scheduled events at the hotel, assuming all visitors, guests and employees who park stay the entire day there is still a parking supply surplus of 828 to 1,483 spaces minimum underutilized.

Reference [Appendix A – Existing Requirements and Parking Supply](#) and [Appendix B – Parking Occupancy and Event Data](#) for documents provided by the Owner related to this section.

## OFF-STREET PARKING CODE REVIEW

Off-street parking codes within Florida’s urban areas, with similar hotel and accessory use convention centers and banquet facility halls were reviewed to identify possible alternative parking generation rates to be applied to the Diplomat’s banquet facility land use. City codes reviewed during this assessment included, Fort Lauderdale, Orlando, Naples, Sarasota, Miami Beach, Marco Island, Palm Springs, and Fort Myers. Of the municipalities reviewed, the City of Fort Lauderdale’s off-street parking generation rate for the public assembly (Section 47.20) land use, inclusive of auditorium, civic and convention center uses, if applied to the Diplomat would accommodate the existing parking demands while providing flexibility for reallocation of the existing parking spaces for future development. Table 6 provides a comparison of both the City of Fort Lauderdale and City of Orlando off-street parking generation rates for comparable land use categories to the Diplomat’s banquet facility use.

**Table 6: Off-Street Parking Code Review**

City Code	Land Use	Existing SF	Parking Rate	Required number of Spaces
Existing (Hollywood)	Hotel Banquet Facilities	128,700 SF	1 space per 60 SF of area available for seating x 65%	1,394
Fort Lauderdale	Place of assembly	128,700 SF	1 space per 400 SF gfa	322
Orlando	Convention Hall	128,700 SF	3.5-7.5 spaces per 1,000 SF of gfa	450

## CONCLUSION

Results of this analysis concluded that the adopted parking requirements for the existing land uses associated with the Diplomat are higher than the actual demand generated for this site. The result is a large portion of the site designated for parking, under the existing code is underutilized, even during peak times of the year.

Findings of this study recommend modifying the parking requirements for the 'Hotel Banquet Facilities' land use parking ratios adopted through Ordinance No. O-2000-31, Exhibit D. The proposed amendment reduces the existing 1 space per 60 square foot (SF), at a 65% accessory use reduction, to a proposed 1 space per 400 SF, with no accessory use reduction. The proposed change would reduce the total required number of parking spaces for the hotel banquet facilities land use from 1,394 spaces to 322 spaces, a difference of 1,072 parking spaces. The reallocation of the existing 1,072 underutilized parking spaces would be available to support future development under the existing code requirements. Table 7 details the proposed amendment to the parking generation rate for the hotel banquet facility at the Diplomat.

**Table 7: Proposed Amendment to Diplomat Planned Development Parking Ratios**

Use	Size	Standard per Adopted Master Plan	No. of Required Parking Spaces (1)
Hotel	1,000 rooms	0.68 spaces per room	680 Spaces
Hotel Food/Beverage	14,616 SF	1 per 100 SF x 65%	95 Spaces
Hotel Nightclub/Lobby Bar	6,593 SF	1 per 60 SF of floor area available for seating or dancing x 65%	71 Spaces
Hotel Offices	15,582 SF	1 space per 250 SF x 65%	41 Spaces
Hotel Banquet Facilities	128,700 SF	1 space per 400 SF gross floor area	322 Spaces
Retail (west of A1A)	60,639 SF	1 space per 220 SF	276 Spaces
Retail (east of A1A) At Hotel	1,508 SF	1 space per 220 SF x 65%	4 Spaces
Condominiums	135 Units	1.5 spaces per unit plus 1 space per 5 units (guest)	230 Spaces
<i>Total required parking of all uses</i>			1,719
<i>Total required parking excluding condominiums</i>			1,489

With the proposed parking rate reduction the percentage of the parking supply allocated specifically to the hotel banquet facility use would be adjusted from 54% of the total parking supply to 22%. Table 8 outlines the percentages of the required parking supply allocated for each land use per the proposed parking code.

**Table 8: Percentage of Proposed Parking Supply by Land Use**

Use	Size	Unit	No. of Required Parking Spaces		Percentage of Supply by Use
Hotel	1,000	Rooms	680	Spaces	45.7%
Hotel Food/Beverage	14,616	SF	95	Spaces	6.4%
Hotel Nightclub/Lobby Bar	6,593	SF	71	Spaces	4.8%
Hotel Offices	15,582	SF	41	Spaces	2.8%
Hotel Banquet Facilities	128,700	SF	1,394	Spaces	21.6%
Retail (west of A1A)	60,639	SF	276	Spaces	18.5%
Retail (east of A1A) at Hotel	1,508	SF	4	Spaces	0.3%
<b>Total</b>			<b>2,561</b>	<b>Spaces</b>	<b>100.0%</b>

As additional uses are developed onsite, the existing parking supply will continue to be shared among all uses associated with the Diplomat master plan to provide flexibility in managing demands generated at different times of the year by each use.



# APPENDIX A

## Existing Requirements and Parking Supply



**EXCERPT OF EXHIBIT D OF ORDINANCE O-2000-31**

**PARKING RATIOS APPROVED IN THE MASTER PLAN**

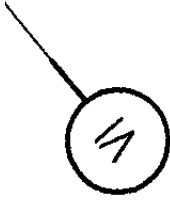
USE	STANDARD PER CITY CODE	PROPOSED ALTERNATIVE STANDARD	NUMBER OF REQUIRED PARKING SPACES (1)
Hotel (1000 Rooms)	1 space per room (key)	.68 spaces per room (2)	680 Spaces
Hotel Food/Beverage (14,616 SF) (3)	1 per 100 SF x 65% (3,4)	Same	95 Spaces
Hotel Nightclub/Lobby Bar (6,593 SF)	1 per 60 SF of floor area available for seating or dancing x 65% (4)	Same	71 Spaces
Hotel Offices (15,582 SF)	1 space per 250 SF X 65%	Same	41 Spaces
Hotel Banquet Facilities (128,700 SF)	1 space per 60 SF of area available for seating X 65%	Same	1,394 Spaces
Retail (west of A1A) (60,639 SF) Gross	1 space per 220 SF	Same	276 Spaces
Retail (east of A1A) At Hotel (1,508 SF)	1 space per 220 SF X 65%	Same	4 Spaces
Condominiums (135 Units)	1.5 spaces per unit plus 1 space per 5 unites (guest)	Same	230 Spaces
<b>Total of Revised Parking Required</b>			<b>2,791 Spaces</b>

**NOTES TO PARKING REQUIREMENTS:**

- (1) All amounts rounded to nearest whole number.
- (2) Based upon ITE Parking Generation Manual.
- (3) Footage shown is gross including Kitchen/Circulation area.
- (4) These spaces are accessory uses within the Hotel and are charge at 65% of the normal Hollywood parking standards.
- (5) Includes 67,000 S.F. of leasable area.
- (6) 70% of this parking will be self-park. The ratio of valet to self-park may vary and is subject to Hotel Operations.



Attachment "F"



DIPLOMAT PARKING MATRIX

LEVEL	HOTEL PARKING			CONDO PARKING			BANQUET PARKING			RETAIL PARKING						
	SELF	VALET	VARIANCE	HCP	SELF	VALET	VARIANCE	HCP	SELF	VALET	VARIANCE	HCP	SELF	VALET	VARIANCE	HCP
P1	0	144	44	2	42	40	53	3	42	181	38	1	0	0	0	4
P2	0	75	61	0	18	23	24	4	93	0	0	4	168	0	2	2
P3					7	0	16	0	133	0	7	1	211	0	3	2
P4									224	0	7	4	240	0	3	1
P5													245	0	3	4
P6													245	0	3	4
P7													250	0	3	2
P8													108	0	1	1
SUBTOTAL	0	219	105	2	67	63	93	7	492	181	52	10	1467	0	18	20
TOTALS		326			230				735				1505			

GRAND TOTAL ALL LEVELS : 2796

Debbie M. Orshesky  
Tel. (954) 768-8234  
Fax (954) 765-1477  
OrsheskyD@gtlaw.com

April 23, 2014

Via Email

Mr. Jaye Epstein  
Director of Community Planning  
City of Hollywood  
2600 Hollywood Boulevard, Room 315  
Hollywood, FL 33022-9045

**Re: Zoning Verification- Diplomat Hotel and Convention Center and Related Improvements (the "Diplomat")**

Dear Jaye:

We are in the process of confirming the current zoning requirements applicable to the property comprising the Diplomat. The Diplomat is comprised of the parcels platted at OR Plat Book 158 Page 16, public records of Broward County, Florida (the "Property"). We are writing this letter to confirm the applicable zoning requirements for the Diplomat, with a particular focus on the applicable parking requirements.

Based upon review of City of Hollywood Commission approvals for the Property (collectively the "Approvals"), please confirm, in writing, the following:

1. The Property is zoned PD, as amended by PD amendments listed on the attached list of Approvals (Exhibit "A");
2. That the PD Amendment adopted via Ordinance O-2000-31, which includes Exhibit D, the PD Master Development Plan (Amended), reflects the current parking ratios and related requirements for the permitted uses within the Diplomat.

If you should have any questions or comments, please do not hesitate to contact me. Thank you for your prompt attention to this matter.

Very truly yours,

  
Debbie M. Orshesky, Esq.

Attachment

cc: Andria Wingett

ALBANY
AMSTERDAM
ATLANTA
AUSTIN
BOSTON
CHICAGO
DALLAS
DELAWARE
DENVER
FORT LAUDERDALE
HOUSTON
LAS VEGAS
LONDON
LOS ANGELES
MEXICO CITY
MIAMI
MILAN
NEW JERSEY
NEW YORK
CHANGHAI
OSLANDO
PALM BEACH COUNTY
PHILADELPHIA
PHOENIX
ROME
SACRAMENTO
SAN FRANCISCO
SHANGHAI
SILICON VALLEY
TALLAHASSEE
TAMPA
TEL AVIV
TYSONS CORNER
WARSAW
WASHINGTON, D.C.
WHITE PLAINS
ARIZONA
CALIFORNIA
CONNECTICUT
FLORIDA
GEORGIA
ILLINOIS
INDIANA
KANSAS
MARYLAND
MASSACHUSETTS
MICHIGAN
MINNESOTA
MISSISSIPPI
MISSOURI
MONTANA
NEBRASKA
NEVADA
NEW HAMPSHIRE
NEW JERSEY
NEW YORK
NORTH CAROLINA
NORTH DAKOTA
OHIO
OKLAHOMA
OREGON
PENNSYLVANIA
RHODE ISLAND
SOUTH CAROLINA
TENNESSEE
TEXAS
UTAH
VIRGINIA
WASHINGTON
WEST VIRGINIA
WISCONSIN
WYOMING

## EXHIBIT A

### DIPLOMAT APPROVALS

Authorization/ Permit	Approval Date	Approval Number
PD Amendment	6/03/98	Ordinance No. 0-98-13
Commercial Flex.	6/03/98	Ordinance No. 0-98-13
Design Review Approval	6/25/98	Resolution No. DR-98-21
Design Review Approval (Retail)	12/08/98	Resolution No. DR-98-21A
Design Review Approval (Ped. Bridge/ Beach Access)	4/22/99	Resolution No. DR-98-21B
Plat Note Amendment	6/16/98	Recorded at BK 28589 PG 0995
NVAL Amendment	4/06/99	Agreement pending
Site Plan Approval	4/21/98	Resolution No. R-98-238
Concurrency/ Vested Rights	4/21/98.	by letter dated 4/22/98
Variance (Signage)	3/09/00	Resolution No. V 00-16 and letter approval
Variance (Parking Spaces)	1/06/99	Resolution No. R-99-15
Major Modification of the Site Plan	6/3/98	R-99-259
PD Amendment	6/99	Ord. PO-99-17.
PD Amendment	7/19/2000	Ord. O-2000-31 (PD-2000-26)



# CITY of HOLLYWOOD, FLORIDA

## Department of Planning

2600 Hollywood Blvd. • Room 315 • P.O. Box 229045 • Hollywood, Florida 33022-9045  
Phone (954) 921-3471 • Fax (954) 921-3347 • [www.hollywoodfl.org](http://www.hollywoodfl.org)

**Jaye Epstein**  
Director

May 19, 2014

LTR 14-035

GreenbergTraurig  
Debbie M. Orshefsky  
401 East Las Olas Boulevard  
Suite 2000  
Fort Lauderdale, FL 33301

Re: **Zoning Verification - Westin Diplomat Resort and Convention Center, 3555 South Ocean Drive.**

To whom it may concern:

The present zoning classification for the above referenced property is Planned Development (PD) District, with a Future Land Use designation of Medium-High Residential. The PD Zoning District is intended to permit larger tracts of land under the unified control to be planned and developed as a whole (as a single operation or an approved series of operations) with a greater amount of flexibility by removing some of the detailed restrictions of conventional zoning. Planned Development Districts are recognized as serving the public interest. All parcels are located within the Hollywood Beach Community Redevelopment Agency. The adjacent property to the north is zoned High Multiple Residential District (RM-25), and to the south are zoned Low Intensity Commercial (C-1) and High Multiple Residential (RM-25).

Enclosed is a copy of Ordinance No.O-2000-31, which includes Exhibit D, the PD Master Development Plan (Amended), reflects the current parking ratios and related requirements for the permitted uses within the Diplomat.

There appears to be no open violation for the subject property. Permit history and violation information may be viewed at [www.hollywoodfl.org](http://www.hollywoodfl.org) under "Online Services." For information regarding Certificates of Occupancy contact the Building Division at (954) 921-3311.

Any modifications to the existing structure will require the issuance of Building Permits. The City of Hollywood requires any new construction or change of use to comply with all applicable codes and ordinances including, but not limited to, building occupancy codes, fire department code regulations, applicable zoning and land use laws, landscaping, parking requirements, provisions for applicable sanitary sewer, water, storm drainage and other utilities. A Certificate of Use is required for a new business, relocation of existing business, new owner of business (Transfer of Ownership), and rental of apartment units.

**Our Mission:** We are dedicated to providing municipal services for our diverse community in an atmosphere of cooperation, courtesy and respect.  
We do this by ensuring all who live, work and play in the City of Hollywood enjoy a high quality of life.

**"An Equal Opportunity and Service Provider Agency"**



# CITY of HOLLYWOOD, FLORIDA

---

## Department of Planning

2600 Hollywood Blvd. • Room 315 • P.O. Box 229045 • Hollywood, Florida 33022-9045  
Phone (954) 921-3471 • Fax (954) 921-3347 • [www.hollywoodfl.org](http://www.hollywoodfl.org)

**Jaye Epstein**  
Director

This letter is informational in nature. It should not be interpreted as either support for or opposition to the referenced development. If you have any questions, please contact Karina da Luz at (954) 921-3471.

Sincerely,

Leslie A. Del Monte  
Planning Manager

Enclosures:

Article 4, Section 4.15

Ordinance No. O-2000-31

Copy of the tax roll from Broward County Property Appraiser

Aerial photo

Land Use and Zoning map

**Our Mission:** We are dedicated to providing municipal services for our diverse community in an atmosphere of cooperation, courtesy and respect.  
We do this by ensuring all who live, work and play in the City of Hollywood enjoy a high quality of life.

**“An Equal Opportunity and Service Provider Agency”**

Print

## City of Hollywood Zoning and Land Development Regulations

### **§ 4.15 PD Planned Development District.**

A. Purpose of (PD) Planned Development District. To permit larger tracts of land under unified control to be planned and developed as a whole (as a single operation or an approved series of operations) with a greater amount of flexibility by removing some of the detailed restrictions of conventional zoning. Planned Developments are recognized as serving the public interest and are encouraged because they:

1. Allow diversification of uses, structures and open spaces when not in conflict with existing and permitted land uses on abutting properties;
2. Allow mixed uses establishing compatible combinations of residential with commercial and/or office uses and supporting facilities;
3. Promote resort qualities of the City by encouraging planned resort communities;
4. Reduce improvement costs through a more efficient use of land and a smaller network of utilities and streets than is possible through application of standards contained in conventional land development regulations;
5. Conserve the natural amenities of the land by encouraging the preservation and improvement of scenic and functional open space;
6. Provide maximum opportunity for application of innovative site planning concepts to the creation of aesthetically pleasing environments for living on properties of adequate size, shape and location;
7. Insure that development will occur according to limitations of land use, site design, population density, building coverage, improvement standards and construction phasing authorized through the approval of a master development plan; and
8. Insure that development will occur within the guidelines and intent of the Hollywood Comprehensive Plan. Planned Developments are equally adaptable to new development, redevelopment and conservation of land, water and other City resources.

B. Definition. A Planned Development is land under unified control, planned and developed as a whole in a single development operation or an approved, programmed series of development operations. It may include principal and accessory uses and structures substantially related to the character of the development itself and the surrounding area of which it is a part. Planned Development Districts are not permitted in the Beach or Downtown Districts of the Community Redevelopment Agency. In the event that a Planned Development within the Beach or Downtown Districts was approved prior to 2012, such originally approved Planned Development may be expanded, subject to the following conditions:

1. An expansion of an approved Planned Development shall only be permitted if the proposed expansion is for property that abuts the existing Planned Development, which may include crossover rights-of-way;

2. The area of the expansion shall not exceed the area of the originally approved Planned Development; and

3. The maximum height (in feet) within the expanded Planned Development shall not exceed the maximum height of the originally approved Planned Development.

C. Unified control. All land included for the purpose of development within a Planned Development District shall be under the control of the applicant (an individual, partnership or corporation, or group of individuals, partnerships or corporations). The applicant shall present satisfactory legal documents to constitute evidence of the unified control of the entire area within the proposed Planned Development which shall be certified by the Department. The applicant shall agree in the application for rezoning to the following:

1. To proceed with the proposed development according to the provisions of these regulations, conditions attached to the rezoning of the land to Planned Development, and the approved master development plan;

2. To provide, subsequent to rezoning and prior to the issuance of a building permit, any agreements, contracts, covenants, deed restrictions or sureties as reasonably deemed necessary by the City, and in a form acceptable to the City, to assure that the development proceeds in accordance with prior approvals and to further provide for continuing operation and maintenance of such areas, functions and facilities which are not proposed to be provided, operated, or maintained at public expense;

3. To bind their successors in title to any commitments made as set forth above; and

4. If the developer elects to administer common open space through an association or nonprofit corporation, said organization shall conform to the applicable laws of the State of Florida.

D. Permitted uses. The uses permitted in a Planned Development, as set forth below, must be consistent with the provisions herein, as may be further restricted by the City of Hollywood Comprehensive Plan:

1. All residential uses permitted by the City of Hollywood Comprehensive Plan;

2. Business uses located in a Planned Development which is intended to be predominantly residential or intended to meet the neighborhood shopping and service needs of the Planned Development and not the general needs of the surrounding area. Such uses shall be grouped in convenient centers designed as integral, harmonious parts of the Planned Development appropriately buffered and screened from residential uses (whether within or outside the Planned Development) to protect them from unsightliness, noise, odors and other characteristics incompatible with residential uses. Businesses should be pedestrian oriented and accessible to walkways and bicycle paths. The center should consist of neighborhood shopping and personal services consistent with the daily needs of the Planned Development;

3. Business uses in a Planned Development which is intended to be predominantly commercial, office or resort to include all commercial uses consistent with Medium High/High Residential, General Business and Office categories of the City of Hollywood Comprehensive Plan;

4. Resort uses in a Planned Development may include entertainment and recreational uses permitted in the Central Beach and Recreational districts as well as those uses permitted by the City of Hollywood Comprehensive Plan;

5. Uses and structures which are customarily accessory and clearly incidental to principal uses and structures may be permitted, subject to regulations applying thereto; and

6. In connection with residential uses in waterfront property, wet dockage or moorage of private pleasure craft shall be permitted subject to regulations applying thereto.

E. Land use and design regulations.

1. Minimum size of planned development. All Planned Developments shall contain a minimum of ten acres of land under unified control. This minimum may be waived by the City Commission upon the recommendation of the Planning and Development Board.

2. Maximum density.

a. The total number of dwelling units permitted in a Planned Development shall not exceed the total number of units permitted by the City of Hollywood Comprehensive Plan.

b. For purposes of this section, a hotel unit shall equal one-half of 1 dwelling unit, and any residential unit shall be equal to 1 dwelling unit and shall be exempt from the provisions of Article 2, § 2.2 and Article 3, § 3.26 of the City of Hollywood Zoning and Land Development Regulations.

3. Minimum lot area, distance between structures, frontage and setbacks.

a. No minimum lot size shall be required within a Planned Development.

b. No minimum distance between structures shall be required within a Planned Development, except as required by the Florida Building Code. The appropriate distance between structures shall be evaluated on an individual development basis by the City Commission, upon recommendation of the Planning and Development Board, after considering the type and character of the building types within a development.

c. Each dwelling unit or other permitted use shall have access to a public street, either directly or indirectly, via an approach, private road, pedestrian way, court or other area dedicated to public or private use of a common easement guaranteeing access. Permitted uses are not required to front on a dedicated road. The City shall be allowed access on privately owned roads, easements and common open space to insure the police and fire protection of the area, to meet emergency needs, to conduct City services and to generally insure the health, safety and welfare of the residents of the Planned Development.

d. There are no required setbacks or yards except for the following:

1. Internal streets. There shall be a setback of not less than 25 feet in depth abutting all public road rights-of-way within a Planned Development District.

2. External streets. There shall be a peripheral landscaped setback from all external streets of the Planned Development of not less than 25 feet in depth.

4. Maximum height of structures. No maximum height of structures shall be required within a Planned Development. The City Commission upon recommendation of the Planning and



Development Board shall determine the appropriate height limitations on an individual development basis after considering the character of the surrounding area, the character of the proposed development, and the goals for community development as stated in the Hollywood Comprehensive Plan.

5. Total site coverage. The City Commission upon recommendation of the Planning and Development Board shall determine the appropriate total site coverage on an individual development basis after considering the character and intensity of the proposed development.

6. Off-street parking and loading requirements. Off-street parking and loading requirements shall meet all the requirements of Article 7 of the City of Hollywood Zoning and Land Development Regulations unless expressly modified by the City Commission.

7. Landscaping.

a. All landscaping shall meet the requirements of Article 9 of the City of Hollywood Zoning and Land Development Regulations unless expressly modified by the City Commission.

b. All undesirable exotic vegetation, including melaleuca, Brazilian pepper, Australian pine or other vegetation deemed undesirable by the Broward County Urban Forester, shall be removed by the applicant according to a schedule approved by the City. However, the City may allow certain undesirable exotic vegetation to remain at the request of the applicant for good cause.

8. Underground utilities. Within the Planned Development, all utilities including telephone, television cable and electrical systems shall be installed underground. Primary facilities providing service to the site may be exempted from this requirement. Large transformers shall be placed on the ground and contained within pad mounts, enclosures or vaults. The developer shall provide adequate landscaping with shrubs and plants to screen all utility facilities permitted above ground.

9. Internal circulation. A Planned Development shall provide an internal circulation system for use by both motorized and non-motorized transportation modes that is orderly, well oriented to the user, coherent with the structure of use and in balance with the intensity of activity. The circulation system should encourage the safe and convenient use of non-motorized transport modes and dissuade the inefficient or excessive use of the automobile.

10. Energy conservation. A Planned Development shall incorporate passive energy conservation measures in its site design in accordance with Chapter 52, South Florida Building Code. Such measures shall include, but need not be limited to, the directional orientation of buildings, the location of windows, minimization of radiant heat absorption and the inclusion of energy-efficient landscaping.

11. Use of reclaimed water. A Planned Development shall incorporate the use of reclaimed water in cases where it has been determined by the Utilities Director that the use of reclaimed water is feasible and in the best interest of the City of Hollywood.

12. Professional services required. Any plans submitted as a part of a petition for a Planned Development shall certify that the services of competent professionals were utilized in the designing or planning process and shall state their names, businesses and addresses. Plans submitted as part of a petition for a Planned Development must be prepared by either a planner who by reason of his or her education and experience, is qualified to become or is a full member of the American Institute of Certified Planners, or an architect licensed by the State of Florida,

together with a professional engineer registered by the State of Florida and trained in the field of civil engineering, and/or a land surveyor registered by the State of Florida.

F. Procedures and requirements for rezoning, design, site plans, modifications and variances for a Planned Development.

1. Application. An application for a rezoning to Planned Development shall be made only by the owner of the subject property or the owner's authorized agent and processed in the same manner as other applications for rezoning of land except as otherwise provided in these regulations.

2. Application and filing fees.

a. New applications or applications for major changes to a previously approved master development plan shall be submitted as provided in Article 5 of the City of Hollywood's Zoning and Land Development Regulations and shall be charged a fee amounting to one and one-half times the fee which is charged for an application for a change of zone as established by resolution in accordance with Article 5 of the Zoning and Land Development Regulations.

b. A filing, as specified in the City Land Development Fee Schedule, shall accompany each request for a minor intermediate revision to a previously approved master development plan. (See also § 4.15.G. herein.)

3. Contents of Master Development Plan.

a. Certified boundary survey;

b. General schematic representation of the land uses with densities, intensities, along with a table of computation which depicts parking, building height and site coverage;

c. Approximate delineation of internal circulation, with hierarchical classification of streets;

d. Points of connection of the local streets to the trafficways, including general indication of the necessary improvements to the trafficways to accommodate the local trips generated by the Planned Development;

e. General location and size of any community facility included within the Planned Development such as parks, schools, fire stations, community center, etc.;

f. Indication of existing vegetation and all other natural features within the Planned Development together with general plans for the conservation or mitigation thereof;

g. Schematic depiction of existing and proposed surface water management elements, including wetlands, retention facilities, drainage easement and swales; and

h. Schematic depiction of the water distribution and wastewater collection facilities and drainage system, including easements.

In addition, the Director may require additional material such as plans, maps and studies which are needed to make findings and determinations that the applicable standards and guidelines have been fully met.

4. Planned Development Site Plan, Design and Modifications. At the time of application for a rezoning to Planned Development which includes the Master Development Plan, the applicant

shall also submit a Design, Site Plan including any modifications and requests for variances, to the Department of Planning and Development Services. The Site Plan must meet the requirements set forth in Article 6 of the Zoning and Land Development Regulations.

5. Staff review. Prior to the public hearing before the Planning and Development Board, the staff of the various city departments concerned with Planned Development shall review the application for rezoning, design, site planning any proposed modifications and/or requests for variances for adherence to all applicable requirements. As a result of this review, the applicant may choose to revise the master development plan, design and/or site plan prior to the public hearing before the Planning and Development Board. A revision of this nature shall be permitted at no expense to the developer.

6. Consideration by the Planning and Development Board. After the public hearing for rezoning to Planned Development, review of the Design, Site Plan including any modifications or requests for variances, the Board shall make its recommendations to the City Commission. In making its recommendation, the Planning and Development Board shall evaluate whether the plans, maps and documents submitted by the applicant and presented at the public hearing, do or do not meet the intent of this Article 5 and 6 of the Zoning and Land Development Regulations and all other applicable city ordinances. The Board shall also evaluate the suitability of the proposed development in terms of its relationship to the City of Hollywood's Comprehensive Plan and the area surrounding the proposed development and to what extent the development is consistent with adopted goals and objectives for growth and development.

7. Consideration by the City Commission. Upon the receipt of the recommendations of the Planning and Development Board, the City Commission shall schedule and conduct a public hearing to consider the petition for rezoning, design, site plan including any modifications and variances, if applicable in accordance with the city's rezoning, design, site plan, modification and variance procedures. The City Commission shall evaluate the proposed development in the same manner as required of the Planning and Development Board.

8. Conditions and stipulations. In granting approval for a Planned Development, the Planning and Development Board may recommend, and the City Commission may attach, reasonable conditions, safeguards and stipulations made at the time of approval, which shall be binding upon the applicant or any successors in interest.

G. Conformance to approved Master Development Plan and Site Plan.

1. Permits. After rezoning to Planned Development District, no permits shall be issued by the city and no development shall commence unless in conformance with the approved Master Development Plan and site plan. The applicant may develop the Planned Development in phases.

2. Minor changes. The Director, after receiving staff recommendations, may approve "minor" changes and deviations from the approved master development plan which are in compliance with the provisions and intent of this Article, and which do not depart from the principal concept of the approved master development plan. All other requested changes and deviations shall be referred to the City Commission.

3. Substantial changes. The Director may determine that the requested changes and deviations from an approved master development plan constitute a substantial alteration to the character of the development and thus require that the requested changes be reviewed and approved by the City Commission. Substantial changes would include:

- a. A change in the use or character of the Planned Development;
- b. An increase in overall coverage of structures;
- c. An increase in the intensity of use;
- d. An increase in the problems of traffic circulation and public utilities;
- e. A reduction in required open spaces; and
- f. A reduction of off-street parking and loading spaces.

4. Transfer of ownership. No land within an approved planned development may be transferred in ownership or in any other way removed from unified control without a written agreement between the city and the parties to which such transfer is made stipulating their understanding and agreement to a condition that such transferred land shall continue, under the full terms and provisions of the planned development approval.

(Ord. O-92-08, passed 2-5-92; Am. Ord. O-94-14, passed 4-6-94; Am. Ord. O-2001-16, passed 5-16-2001; Am. Ord. O-2007-34, passed 12-18-2007; Am. Ord. O-2009-21, passed 7-15-2009; Am. Ord. O-2011-14, passed 5-4-11; Am. Ord. O-2013-01, passed 1-9-13)

ORDINANCE NO. 0-2000-31

AN ORDINANCE OF THE CITY OF HOLLYWOOD, FLORIDA, AMENDING THE APPROVED PLANNED DEVELOPMENT (PD) MASTER DEVELOPMENT PLAN FOR THE PROPERTY LOCATED AT 3514 AND 3515 SOUTH OCEAN DRIVE (ORIGINALLY APPROVED BY ORDINANCE NO. 0-92-31 AND AMENDED BY ORDINANCE NO. 0-96-13 AND RESOLUTION NO. R-97-212 AND AS AMENDED BY ORDINANCE NOS. 0-98-13 AND 0-99-23); APPROVING THE REDUCTION OF REQUIRED LOADING DOCK SPACES FROM 14 TO 12; AND ACCEPTING A DECLARATION IN LIEU OF THE UNITY TITLE WHICH WAS ORIGINALLY REQUIRED PURSUANT TO ORDINANCE 0-98-13 AND RECORDED IN THE PUBLIC RECORDS BROWARD COUNTY, FLORIDA, IN ORDER FOR THE DEVELOPER TO FACILITATE THE SALE OF THE "CONDOMINIUM PARCEL" WITHIN THE PLANNED DEVELOPMENT; MODIFYING EXHIBIT "G" CONDITIONS TO THE PD MATER PLAN TO PROVIDE FOR THE POSSIBILITY OF THE CREATION OF A COMMUNITY DEVELOPMENT DISTRICT CONTINGENT UPON FUTURE CITY COMMISSION APPROVAL; PROVIDING FOR A SEVERABILITY CLAUSE, A REPEALER CLAUSE AND AN EFFECTIVE DATE.

WHEREAS, the property legally described in Exhibit "A" hereto (the "Property" was rezoned to PD (Planned Development) by Ordinance No. ~~0-92-13~~; and

WHEREAS, Ordinance No. <sup>0-92-31</sup>~~0-92-13~~ was amended by Ordinance No. 0-96-13 and Resolution No. R-97-212 (Ordinance No. ~~0-92-13~~; as amended, is hereinafter referred to as the "Rezoning Ordinance"); and <sup>0-92-31</sup>

WHEREAS, the "Rezoning Ordinance" was amended in part by Ordinance 0-98-13 and 0-99-23; and

(Coding: Words in underscoring type are additions to existing text, and words in ~~struckthrough~~ type are deletions)

Section 2: That Ordinance No. 0-98-13 which Amended the PD Master Plan for the property located at 3514 and 3515 South Ocean Drive, (originally approved by Ordinance 0-92-31 and amended by Ordinance 0-96-13 and Resolution No. R-97-212 and 0-99-23) shall be further amended to provide as follows:

That the Loading Dock Distribution for the subject property shall be:

<u>Use</u>	<u># Loading Spaces</u>
Hotel/Convention Facilities	7
Retail (Intracoastal)	3
Condominium	<u>2</u>
Total	12

The PD Master Plan for the subject property is hereby amended as described in Attachment "D" hereto.

Section 3: That the City Commission hereby accepts the Declaration in Lieu of Unity of Title, in substantially the form attached hereto as Exhibit "A", and said Declaration shall be recorded in the Official Public Records of Broward County, Florida, against the Property legally described in Attachment "1" hereto prior to the Release of the Unity of Title described in Section 4 below.

Section 4: That upon the City receiving the requisite Declaration of Restrictions and easement documents as set forth in the Declaration in Lieu of Unity of Title the City shall release the Unity of Title which is recorded in Official Records Book 24819, Page 0990 of the Public Records of Broward County, Florida.

Section 5: That it hereby approves the modification to Exhibit "G" of the PD Master Plan relating to the possible creation of a Community Development District as more specifically set forth in the attached Exhibit "G" which is incorporated herein by reference.

Section 6: That those provisions of Ordinance No. <sup>0-92-31</sup>~~0-92-13~~ and as amended by Ordinance No. 0-96-13, Resolution Nos. R-97-212 and as amended by Ordinance No. 0-98-13 and Ordinance No. 0-99-23 which are not amended by this Ordinance shall remain in full force and effect along with all other conditions set forth in Exhibit "G".

Section 7: That all sections or parts of sections of the Code of Ordinances, all ordinances or parts of ordinances, and all resolutions or parts of resolutions in conflict herewith be and the same are hereby repealed to the extent of such conflict.

EXHIBIT "A"

LAND DESCRIPTION  
DIPLOMAT RESORT AND COUNTRY CLUB PLAT  
CONDOMINIUM PARCEL - PLAT BOUNDARY  
PARCEL B-1

A portion of Parcel B, DIPLOMAT RESORT AND COUNTRY CLUB PLAT, according to the plat thereof as recorded in Plat Book 158, Page 16 of the Public Records of Broward County, Florida and being more particularly described as follows:

BEGINNING at the Northwest corner of said Parcel B;

THENCE South  $84^{\circ}52'00''$  East on the North line of said Parcel B, a distance of 579.81 feet to the Northeast corner of said Parcel B;

THENCE South  $02^{\circ}12'15''$  West on the East line of said Parcel B, a distance of 117.38 feet;

THENCE South  $05^{\circ}22'00''$  West on said East line of Parcel B, a distance of 90.46 feet;

THENCE North  $84^{\circ}52'00''$  West 59.48 feet to a point on the arc of a non-tangent curve concave to the Southwest whose radius point bears North  $85^{\circ}15'39''$  West;

THENCE Northwesterly on the arc of said curve having a radius of 50.01 feet, through a central angle of  $56^{\circ}51'26''$  an arc distance of 49.63 feet to a point on the arc of a non-tangent curve concave to the Southwest whose radius point bears South  $37^{\circ}31'23''$  West;

THENCE Northwesterly on the arc of said curve having a radius of 99.90 feet, through a central angle of  $21^{\circ}12'27''$  an arc distance of 36.98 feet to a point of non-tangency;

THENCE South  $05^{\circ}08'00''$  West 14.85 feet;

THENCE South  $84^{\circ}52'00''$  East 4.00 feet;

THENCE South  $05^{\circ}08'00''$  West 10.17 feet;

THENCE North  $84^{\circ}52'00''$  West 4.00 feet;

THENCE South  $05^{\circ}08'00''$  West 34.82 feet to a point on the arc of a non-tangent curve concave to the North whose radius point bears North  $16^{\circ}04'33''$  West;

THENCE Westerly on the arc of said curve having a radius of 92.25 feet, through a central angle of  $30^{\circ}32'27''$  an arc distance of 49.17 feet to a point on the arc of a non-tangent curve concave to the South whose radius point bears South  $14^{\circ}27'32''$  West;

THENCE Westerly on the arc of said curve having a radius of 117.30 feet, through a central angle of  $07^{\circ}46'32''$  an arc distance of 15.92 feet to a point of non-tangency;

THENCE South  $05^{\circ}08'00''$  West 3.83 feet;

THENCE North  $84^{\circ}52'00''$  West 10.17 feet;

THENCE North  $05^{\circ}08'00''$  East 4.00 feet;

THENCE North  $84^{\circ}52'00''$  West 72.39 feet;

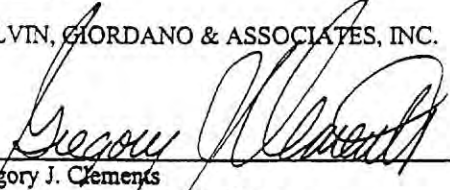
THENCE North  $39^{\circ}52'00''$  West 6.56 feet;

Prepared by:  
CALVIN, GIORDANO AND ASSOCIATES, INC.  
Two Oakwood Blvd., Suite 120  
Hollywood, Florida 33020  
September 29, 1999

P:\Projects\981890 Diplomat Hotel Engr & Svy\SURVEY\Legal Descriptions\Diplomat\_Condo-Plat.doc

4. This description and the accompanying sketch were prepared from DIPLOMAT RESORT AND COUNTRY CLUB PLAT recorded in the Public Records of Broward County, Florida and from plans prepared by Nichols, Brosch, Sandoval & Associates, Inc. of the Diplomat Resort and Country Club Condominium and dated 9-21-99 and does not represent a Boundary Survey.

CALVIN, GIORDANO & ASSOCIATES, INC.

  
\_\_\_\_\_  
Gregory J. Clements  
Professional Surveyor and Mapper  
Florida Registration Number 4479

Date: 9-30-99

Prepared by:  
CALVIN, GIORDANO AND ASSOCIATES, INC.  
Two Oakwood Blvd., Suite 120  
Hollywood, Florida 33020  
September 29, 1999

P:\Projects\981890 Diplomat Hotel Engr & Svy\SURVEY\Legal Descriptions\Diplomat\_Condo-Plat.doc



LAND DESCRIPTION  
DIPLOMAT CONDOMINIUM  
RECREATION PARCEL

A portion of Parcel B, DIPLOMAT RESORT AND COUNTRY CLUB PLAT, according to the plat thereof as recorded in Plat Book 158, Page 16 of the Public Records of Broward County, Florida, being more particularly described as follows:

COMMENCE at the Northwest corner of said Parcel B;

THENCE South 84°52'00" East on the North line of said Parcel B, a distance of 540.33 feet;

THENCE South 05°08'00" West 1.00 feet to the POINT OF BEGINNING;

THENCE South 05°08'16" West 206.68 feet;

THENCE North 84°52'00" West 14.00 feet to a point on the arc of a non-tangent curve concave to the Southwest whose radius point bears North 85°15'30" West;

THENCE Northwesterly on the arc of said curve having a radius of 50.01 feet, through a central angle of 56°51'44" an arc distance of 49.63 feet to a point on the arc of a non-tangent curve concave to the Southwest whose radius point bears South 37°31'23" West;

THENCE Northwesterly on the arc of said curve having a radius of 99.90 feet, through a central angle of 21°12'27" an arc distance of 36.98 feet to a point of non-tangency;

THENCE South 05°12'06" West 26.23 feet;

THENCE South 73°34'21" West 11.74 feet to the beginning of a tangent curve concave to the North;

THENCE Westerly on the arc of said curve having a radius of 61.00 feet, through a central angle of 31°05'20" an arc distance of 33.10 feet to a point of reverse curvature with a curve concave to the South;

THENCE Westerly on the arc of said curve having a radius of 144.00 feet, through a central angle of 12°38'46" an arc distance of 31.78 feet to a point on the arc of a non-tangent curve concave to the Southwest whose radius point bears North 77°31'09" West;

THENCE Northwesterly on the arc of said curve having a radius of 12.00 feet, through a central angle of 83°23'27" an arc distance of 17.47 feet to a point of compound curvature with a curve concave to the South;

THENCE Westerly on the arc of said curve having a radius of 100.00 feet through a central angle of 01°47'37" an arc distance of 3.13 feet to a point of non-tangency;

THENCE North 03°50'42" East 61.40 feet to a point on the arc of a non-tangent curve concave to the West whose radius point bears North 74°24'02" West;

THENCE Northerly on the arc of said curve having a radius of 92.67 feet, through a central angle of 19°21'51" an arc distance of 31.32 feet to a point of non-tangency;

THENCE South 84°52'00" East 39.39 feet to a point on the arc of a non-tangent curve concave to the West whose radius point bears North 89°58'08" West;

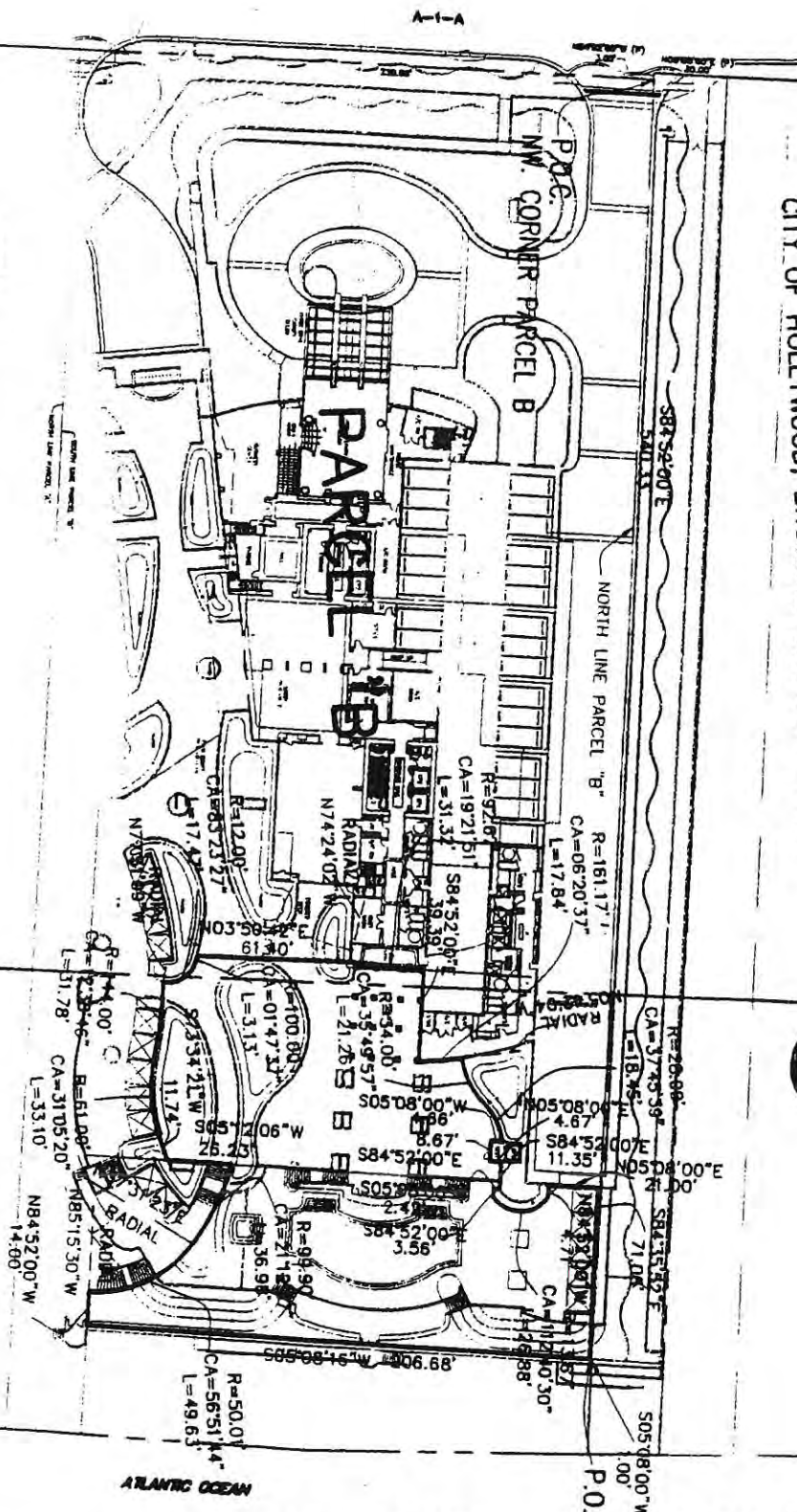
THENCE Northerly on the arc of said curve having a radius of 161.17 feet, through a central angle of 06°20'37" an arc distance of 17.84 feet to a point on the arc of a non-tangent curve concave to the Northwest whose radius point bears North 05°42'04" West;

SKETCH OF DESCRIPTION  
 DIPLOMAT CONDOMINIUM RECREATION PARCEL  
 CITY OF HOLLYWOOD, BROWARD COUNTY, FLORIDA



SCALE 1" = 60'

- LEGEND:
- ARC LENGTH
  - BROWARD COUNTY RECORDS
  - CENTRAL ANGLE
  - DRAINAGE EASEMENT
  - POINT OF BEGINNING
  - POINT OF COMMENCEMENT
  - PLAIN BOOK
  - PAGE
  - RADIUS DISTANCE
  - SQUARE FEET
  - UTILITY CASSEMENT
  - UTILITY BUSINESS
  - LP



CLIENT: DIPLOMAT PROJECT NO. 98-1890 SHEET 3 OF 3 SHEETS

REVISION	DWN	DATE	FB/PG
SKETCH	GJC	5/19/00	N/A



**Calvin, Giordano & Associates, Inc**  
 Engineers Surveyors Planners  
 1800 Eller Drive, Suite 800  
 P.O. Box 13141  
 Ft. Lauderdale, Florida 33316  
 954.921.7781 954.921.8807 fax  
 Certificate of Authorization No. 6791

(ii) For appropriate easements for parking, drainage and other shared infrastructure within the Subject Property between and among each of the uses constructed or to be constructed upon the Subject Property.

2. **Covenant Running with the Land.** This Declaration on the part of the Owner shall constitute a covenant running with the title to the Subject Property and shall remain in full force and effect and be binding upon the undersigned Owner, and its heirs, successors and assigns unless and until the same is modified or released by the City Commission of the City of Hollywood.

3. **Term.** This Declaration is to run with title to the Subject Property and shall be binding upon the Subject Property for a period of thirty (30) years from the date this Declaration is recorded in the public records of Broward County, after which time it shall be extended automatically for successive periods of ten (10) years each, unless modified, amended or released as provided for herein.

4. **Modification, Amendment, Release.** This Declaration may be modified, amended or released as to the Subject Property, or any portion thereof, by a written instrument executed by the Owner and the City of Hollywood.

5. **Enforcement.** The Owner on behalf of itself and its heirs, successors and assigns to the Subject Property, hereby acknowledges and agrees this Declaration may be enforced by the City by injunctive relief. The prevailing party in any action or suit pertaining to or arising out of this declaration shall be entitled to recover, in addition to costs and disbursements allowed by law, such attorneys' fees as the Court may adjudge to be reasonable. This enforcement provision shall be in addition to any other remedies available at law, in equity or both.

6. **Election of Remedies.** All rights, remedies and privileges granted herein shall be deemed to be cumulative and the exercise of any one or more shall neither be deemed to constitute an election of remedies, nor shall it preclude the party exercising the same from exercising such other additional rights, remedies or privileges.

7. **Recording.** This Declaration shall be filed of record in the public records of Broward County, Florida.

8. **Release of Prior Unity of Title.** The City Commission of the City of Hollywood hereby authorizes the City Attorney to provide the Owner with a written release in recordable form of that certain Unity of Title recorded at Official Records Book 28419, Page 0990 in the Public Records of Broward County, Florida, upon the Owner's providing to the City that Declaration of Restrictions and those easements described in paragraph 1.b. above in a form acceptable to the City Attorney.

9. **Restriction and Encumbrances.** Nothing contained herein is intended to prevent or inhibit the recordation of a Declaration of Condominium against a portion of the Subject Property for the proposed 135 condominium units, nor is this Declaration in Lieu of Unity of Title intended to prevent or inhibit the imposition of mortgages or other encumbrances upon all or a portion of the Subject Property.



## MODIFICATION TO EXHIBIT "G"

10. In the event that the developer desires to create a Community Development District (CDD), the developer shall petition the City Commission pursuant to Chapter 190, Florida Statutes, requesting the establishment of said CDD. Upon receiving a petition in conformance with Chapter 190, Florida Statutes, the City Commission may consider such a petition in accordance with the procedures set forth in Chapter 190, Florida Statutes. If, in the future, the City Commission approves the creation of a Community Development District (CDD) covering the Diplomat property, then the public components of the project and infrastructure may be constructed and funded through such CDD pursuant to the provisions of Chapter 190, Florida Statutes.

## LEGAL AD

NOTICE IS HEREBY GIVEN in accordance with Section 166.041 Florida Statutes that the City Commission of the City of Hollywood, Florida, at a Regular City Commission Meeting, on WEDNESDAY, July 19, 2000, in the City Commission Chambers, Room 219, General Joseph W. Watson Circle, Hollywood, Florida, proposes to consider on second and final reading the following proposed ordinance(s):

Proposed Ordinance - PO-2000-24 - beginning at: 5:30 PM, or as soon thereafter as same can be heard:

AN ORDINANCE OF THE CITY OF HOLLYWOOD, FLORIDA, CREATING CHAPTER 55 OF THE CODE OF ORDINANCES ENTITLED "RIGHTS-OF-WAY CONSTRUCTION AND ADMINISTRATION" TO ESTABLISH THE GENERAL PROCEDURES AND REQUIREMENTS FOR USE OF CITY RIGHTS-OF-WAY; PROVIDING FOR THE REGULATION OF USE AND OCCUPANCY OF RIGHTS-OF-WAY FOR THE PLACEMENT OF TELECOMMUNICATION FACILITIES; AND PROVIDING FOR AN EFFECTIVE DATE.

Proposed Ordinance - PO-2000-25 - beginning at: 5:30 PM, or as soon thereafter as same can be heard:

AN ORDINANCE OF THE CITY OF HOLLYWOOD, FLORIDA, AMENDING SECTIONS 110.50 AND 100.53 OF THE MUNICIPAL CODE OF ORDINANCES RELATED TO OCCUPATIONAL LICENSE FEES AND RATES, AMENDING SECTION 110.56 RELATED TO REFUNDS, AND AMENDING SECTION 110.83 RELATED TO THE POWERS AND DUTIES OF THE OCCUPATIONAL LICENSE INSPECTOR; AND PROVIDING FOR AN EFFECTIVE DATE.

Proposed Ordinance - PO-2000-26 - beginning at: 5:45 PM, or as soon thereafter as same can be heard:

AN ORDINANCE OF THE CITY OF HOLLYWOOD, FLORIDA, AMENDING THE APPROVED PLANNED DEVELOPMENT (PD) MASTER DEVELOPMENT PLAN FOR THE PROPERTY LOCATED AT 3514 AND 3515 SOUTH OCEAN DRIVE (ORIGINALLY APPROVED BY ORDINANCE NO. 0-92-31 AND AMENDED BY ORDINANCE NO. 0-96-13 AND RESOLUTION NO. R-97-212 AND AS AMENDED BY ORDINANCE NO. 0-98-13 AND 0-99-23); APPROVING THE REDUCTION OR REQUIRED LOADING DOCK SPACES FROM 14 TO 12; ACCEPTING A DECLARATION IN LIEU OF THE UNITY TITLE WHICH WAS ORIGINALLY REQUIRED PURSUANT TO ORDINANCE 0-98-13 AND RECORDED IN THE PUBLIC RECORDS BROWARD COUNTY, FLORIDA, IN ORDER FOR THE DEVELOPER TO FACILITATE THE SALE OF THE "CONDOMINIUM PARCEL" WITHIN THE PLANNED DEVELOPMENT; MODIFYING EXHIBIT "G" CONDITIONS TO THE PD MASTER PLAN TO PROVIDE FOR THE POSSIBILITY OF THE CREATION OF A COMMUNITY DEVELOPMENT DISTRICT CONTINGENT UPON FUTURE CITY COMMISSION APPROVAL; PROVIDING FOR A SEVERABILITY CLAUSE, A REPEALER CLAUSE AND FOR AN EFFECTIVE DATE. (PD-00-02).

The proposed ordinance(s) may be inspected by the public in the Office of the City Clerk, Room 221, General Joseph W. Watson Circle, Hollywood, Florida, between the hours of 8:00 AM and 4:45 PM on any regular working day. Interested parties may appear at the aforesaid time and place and be heard with respect to the proposed ordinance(s).

**NOTICE OF PUBLIC HEARING**  
**Second Reading**

The City of Hollywood City Commission will hold a public hearing in the City Commission Chambers, Room 219, second floor of Hollywood City Hall, located at 2600 Hollywood Boulevard on the following detailed application(s) on Wednesday, July 19, 2000.

**FILE NO:** PD-00-02, beginning at 5:45 PM or as soon thereafter as same can be heard

**APPLICANT:** Diplomat Properties, Limited Partnership

**LOCATION:** 3525, 3555, 3575, 3200, 3210-3690 and 3700 S. Ocean Drive

Amending the Approved Planned Development (PD) Master Development Plan for the Property Located at 3514 and 3515 South Ocean Drive (Originally Approved by Ordinance No. 0-92-31 and Amended by Ordinance No. 0-96-13 and Resolution No. R-97-212 and as Amended by Ordinance No. 0-98-13 and 0-99-23); Approving the Reduction or Required Loading Dock Spaces From 14 to 12; Accepting a Declaration in Lieu of the Unity Title Which was Originally Required Pursuant to Ordinance 0-98-13 and Recorded in the Public Records Broward County, Florida, in Order for the Developer to Facilitate the Sale of the "Condominium Parcel" Within the Planned Development; Modifying Exhibit "G" Conditions to the PD Master Plan to Provide for the Possibility of the Creation of a Community Development District Contingent Upon Future City Commission Approval; Providing for a Severability Clause, a Repealer Clause and for an Effective Date.

Legal description for each of the above petitions is on file in the Community Planning Division.

Comments of any interested party relative to this matter may be submitted in writing and/or presented in person at the meeting. Any person who decides to appeal any decision made by the board, agency or commission with respect to any matter considered at this meeting will need a record of the proceedings, and it will be their responsibility to ensure that a verbatim record of the proceedings is made, which record includes the testimony and evidence upon which the appeal is based. Please call (954) 921-3471 for any questions regarding the above matters.

Two or more members of any other city board, commission, or committee, who are not members of this board may attend this meeting and may, at that time, discuss matters on which foreseeable action may later be taken by their board, commission, or committee.

Persons with disabilities who require reasonable accommodation to participate in city programs and/or services may call the Office of Human Resources three business days in advance at (954) 921-3073 (voice). If an individual is hearing or speech impaired, please call (954) 921-3239 (V-TDD).

Dated this 3<sup>rd</sup> day of July, 2000.

**NOTICE OF PUBLIC HEARING**  
**First Reading**

The City of Hollywood City Commission will hold a public hearing in the City Commission Chambers, Room 219, second floor of Hollywood City Hall, located at 2600 Hollywood Boulevard on the following detailed application(s) on Wednesday, July 5, 2000.

**1. FILE NO:** Z-00-01, beginning at 5:45 PM or as soon thereafter as same can be heard.

**APPLICANT:** Contract Connection, Inc.

**LOCATION:** 2851 Polk Street

**REQUEST:** Zoning change from RM-18 to O-1 and Application of 5% Flexibility Rule

**2. FILE NO:** PD-00-02, beginning at 5:45 PM or as soon thereafter as same can be heard

**APPLICANT:** Diplomat Properties, Limited Partnership

**LOCATION:** 3525, 3555, 3575, 3200, 3210-3690 and 3700 S. Ocean Drive

**REQUEST:** Diplomat PD Modification and Associated Site Plan Modification.

Legal description for each of the above petitions is on file in the Community Planning Division.

Comments of any interested party relative to this matter may be submitted in writing and/or presented in person at the meeting. Any person who decides to appeal any decision made by the board, agency or commission with respect to any matter considered at this meeting will need a record of the proceedings, and it will be their responsibility to ensure that a verbatim record of the proceedings is made, which record includes the testimony and evidence upon which the appeal is based. Please call (954) 921-3471 for any questions regarding the above matters.

Two or more members of any other city board, commission, or committee, who are not members of this board may attend this meeting and may, at that time, discuss matters on which foreseeable action may later be taken by their board, commission, or committee.

Persons with disabilities who require reasonable accommodation to participate in city programs and/or services may call the Office of Human Resources three business days in advance at (954) 921-3073 (voice). If an individual is hearing or speech impaired, please call (954) 921-3239 (V-TDD).

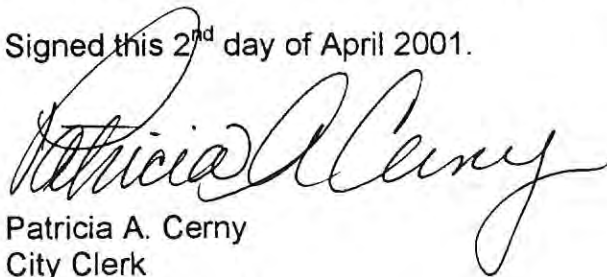


Not to File Regarding Ordinance No. O-2000-31

There was a scrivener's error regarding Ordinance No. O-2000-31. In various section of this ordinance, Ordinance No. O-92-13 was referenced. This is an incorrect ordinance number, the correct Ordinance No. is O-92-31.

Attached are copies of Ordinances O-92-13 and O-92-31 for reference.

Signed this 2<sup>nd</sup> day of April 2001.

A handwritten signature in black ink, appearing to read "Patricia A. Cerny". The signature is written in a cursive, flowing style with a large initial "P".

Patricia A. Cerny  
City Clerk  
City of Hollywood



Site Address	3555 S OCEAN DRIVE, HOLLYWOOD	ID #	5142 23 17 0010
Property Owner	DIPLOMAT PROPERTIES LTD PRTNR % CHM	Millage	0513
Mailing Address	548 CABOT ST BEVERLY MA 01845	Use	39

Abbreviated Legal Description	DIPLOMAT RESORT AND COUNTRY CLUB PLAT 158-16 B PARCEL A LESS RD R/W DESC IN OR 31014/124 & POR OF PARCEL B NOT INCLUDED IN THE DIPLOMAT CONDO SITE PARCEL(1223-17-002)
-------------------------------	--

**The just values displayed below were set in compliance with Sec. 193.011, Fla. Stat., and include a reduction for costs of sale and other adjustments required by Sec. 193.011(8).**

Property Assessment Values					
Click here to see 2013 Exemptions and Taxable Values to be reflected on the Nov. 1, 2013 tax bill.					
Year	Land	Building	Just / Market Value	Assessed / SOH Value	Tax
2014	\$43,363,130	\$167,159,150	\$210,522,280	\$210,522,280	
2013	\$43,363,130	\$165,978,990	\$209,342,120	\$205,603,860	\$4,678,310.25
2012	\$43,363,130	\$143,549,470	\$186,912,600	\$186,912,600	\$4,219,733.20

**IMPORTANT: The 2014 values currently shown are "roll over" values from 2013. These numbers will change frequently online as we make various adjustments until they are finalized on June 1. Please check back here AFTER June 1, 2014, to see the actual proposed 2014 assessments and portability values.**

2014 Exemptions and Taxable Values by Taxing Authority				
	County	School Board	Municipal	Independent
Just Value	\$210,522,280	\$210,522,280	\$210,522,280	\$210,522,280
Portability	0	0	0	0
Assessed/SOH	\$210,522,280	\$210,522,280	\$210,522,280	\$210,522,280
Homestead	0	0	0	0
Add. Homestead	0	0	0	0
Wid/Vet/Dis	0	0	0	0
Senior	0	0	0	0
Exempt Type	0	0	0	0
Taxable	\$210,522,280	\$210,522,280	\$210,522,280	\$210,522,280

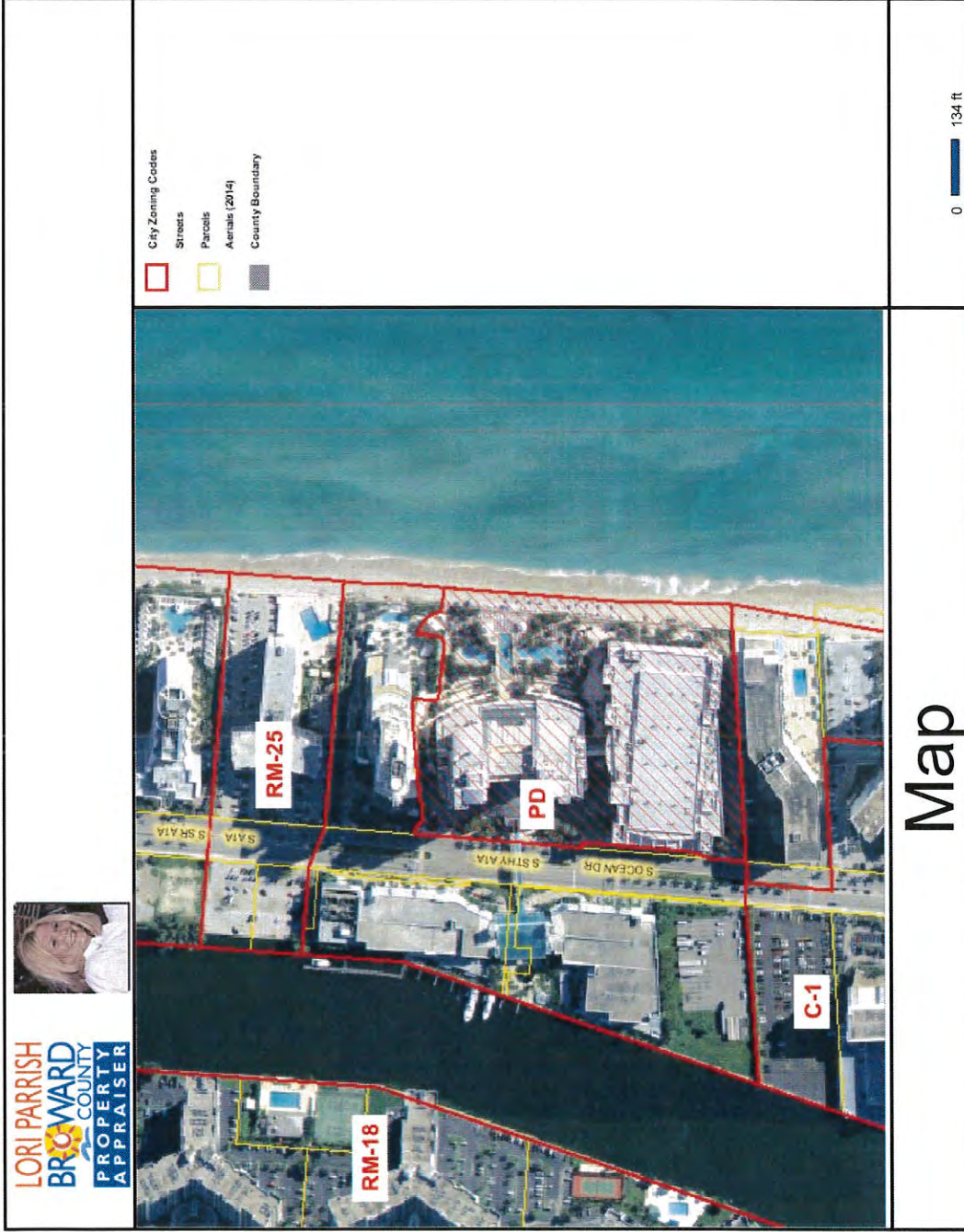
Sales History			
Date	Type	Price	Book/Page or CIN
9/30/1997	SW*	\$11,428,571	27081 / 360

Land Calculations		
Price	Factor	Type
\$100.07	433,328	SF
Adj. Bldg. S.F. (See Sketch)		709504
Units		998

\* Denotes Multi-Parcel Sale (See Deed)

Special Assessments								
Fire	Garb	Light	Drain	Impr	Safe	Storm	Clean	Misc

05								
S								
709504								



**LORI PARRISH**  
**BROWARD COUNTY**  
**PROPERTY APPRAISER**

Created on: 5/2/2014 3:05:24 PM using ArcIMS 4.0.1 - Source: Broward County Property Appraiser

# The Westin Diplomat Hotel and Convention Center



PLANNING AND  
DEVELOPMENT SERVICES

**Land Use**

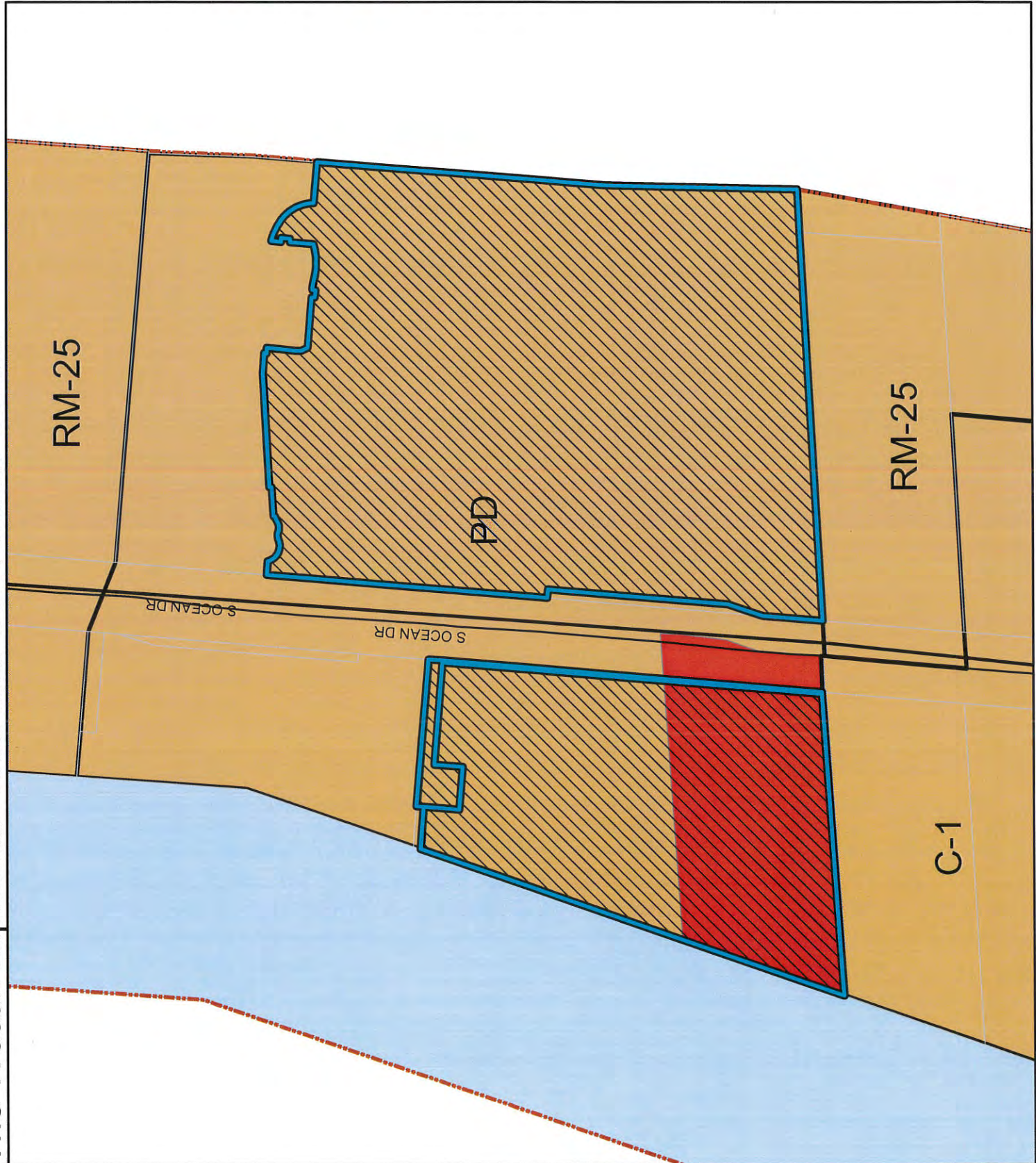
- City Boundary
- Streets
- Major Roads
- Subject Property

**LAND USE**

- MHRES
- GBUS

**ZONING**

- C-1
- PD
- RM-25



# APPENDIX B

## Parking Occupancy and Event Data



Hollywood Diplomat Resort and Spa  
 Parking Utilization Study - Support Documentation

Year	Date	Self Parked Totals	Valet Parked Totals	Employee Parking	Total	Holidays/Event	Hotel Event Banquet Covers	Local/Social Event Catering Covers	Total People
2011	Friday, July 01, 2011	148	21	184	353				
2011	Saturday, July 02, 2011	202	250	181	633				
2011	Sunday, July 03, 2011	301	370	175	846				
2011	Monday, July 04, 2011	334	320	158	812	Independence Day			
2011	Tuesday, July 05, 2011	158	393	159	710				
2011	Wednesday, July 06, 2011	92	269	150	511				
2011	Thursday, July 07, 2011	107	208	142	457				
2011	Friday, July 08, 2011	134	224	160	518				
2011	Saturday, July 09, 2011	235	305	154	694				
2011	Sunday, July 10, 2011	280	269	170	719				
2011	Monday, July 11, 2011	110	283	176	569				
2011	Tuesday, July 12, 2011	161	264	200	625				
2011	Wednesday, July 13, 2011	214	274	213	701				
2011	Thursday, July 14, 2011	300	308	216	824				
2011	Friday, July 15, 2011	247	492	241	980	LAAIA-Group	3,191	710	3,901
2011	Saturday, July 16, 2011	209	192	196	597	LAAIA-Group	1,032	111	1,143
2011	Sunday, July 17, 2011	258	642	169	1,069	Florida Airport Council			
2011	Monday, July 18, 2011	176	414	189	779				
2011	Tuesday, July 19, 2011	166	405	185	756				
2011	Wednesday, July 20, 2011	189	139	221	549				
2011	Thursday, July 21, 2011	169	348	216	733				
2011	Friday, July 22, 2011	289	424	214	927	Herbalife-Catering	1,661	1,680	3,341
2011	Saturday, July 23, 2011	295	344	192	831	Herbalife-Catering	360	1,860	2,220
2011	Sunday, July 24, 2011	508	299	172	979	Herbalife-Catering			
2011	Monday, July 25, 2011	195	269	217	681				
2011	Tuesday, July 26, 2011	164	295	209	668				
2011	Wednesday, July 27, 2011	158	295	257	710				
2011	Thursday, July 28, 2011	134	231	239	604				
2011	Friday, July 29, 2011	106	147	234	487				
2011	Saturday, July 30, 2011	142	289	198	629				
2011	Sunday, July 31, 2011	147	313	166	626				
2011	Monday, August 01, 2011	57	169	198	424				
2011	Tuesday, August 02, 2011	50	128	213	391				
2011	Wednesday, August 03, 2011	50	125	222	397				
2011	Thursday, August 04, 2011	87	147	208	442				
2011	Friday, August 05, 2011	107	173	180	460				
2011	Saturday, August 06, 2011	136	293	173	602				
2011	Sunday, August 07, 2011	152	308	188	648				
2011	Monday, August 08, 2011	142	226	182	550				
2011	Tuesday, August 09, 2011	116	230	185	531				
2011	Wednesday, August 10, 2011	142	258	222	622				
2011	Thursday, August 11, 2011	173	245	187	605				
2011	Friday, August 12, 2011	170	290	196	656				
2011	Saturday, August 13, 2011	240	416	180	836	No records found	50	-	50
2011	Sunday, August 14, 2011	268	498	175	941	No records found	838	-	838
2011	Monday, August 15, 2011	152	338	186	676				
2011	Tuesday, August 16, 2011	177	334	211	722				
2011	Wednesday, August 17, 2011	155	138	199	492				
2011	Thursday, August 18, 2011	138	231	179	548				
2011	Friday, August 19, 2011	84	143	175	402				
2011	Saturday, August 20, 2011	180	376	153	709				
2011	Sunday, August 21, 2011	166	213	118	497				
2011	Monday, August 22, 2011	75	130	127	332				
2011	Tuesday, August 23, 2011	99	133	142	374				
2011	Wednesday, August 24, 2011	88	124	160	372				
2011	Thursday, August 25, 2011	93	145	159	397				
2011	Friday, August 26, 2011	89	160	157	406				
2011	Saturday, August 27, 2011	231	488	189	908	NOVA-Catering	140	2,807	2,947
2011	Sunday, August 28, 2011	196	285	147	628				
2011	Monday, August 29, 2011	192	234	159	585				
2011	Tuesday, August 30, 2011	218	208	179	605				
2011	Wednesday, August 31, 2011	213	219	182	614				
2011	Thursday, September 01, 2011	213	189	183	585				
2011	Friday, September 02, 2011	153	267	178	598				
2011	Saturday, September 03, 2011	268	479	182	929	Broward County AFL-CIO	-	675	675
2011	Sunday, September 04, 2011	209	372	154	735				
2011	Monday, September 05, 2011	151	262	138	551	Labor Day			
2011	Tuesday, September 06, 2011	74	105	148	327				
2011	Wednesday, September 07, 2011	61	171	167	399				
2011	Thursday, September 08, 2011	115	195	175	485				
2011	Friday, September 09, 2011	128	194	173	495				
2011	Saturday, September 10, 2011	120	168	151	439				
2011	Sunday, September 11, 2011	88	230	124	442				
2011	Monday, September 12, 2011	46	150	136	332				



Hollywood Diplomat Resort and Spa  
 Parking Utilization Study - Support Documentation

Year	Date	Self Parked Totals	Valet Parked Totals	Employee Parking	Total	Holidays/Event	Hotel Event Banquet Covers	Local/Social Event Catering Covers	Total People
2011	Tuesday, September 13, 2011	67	111	148	326				
2011	Wednesday, September 14, 2011	44	86	144	274				
2011	Thursday, September 15, 2011	41	134	148	323				
2011	Friday, September 16, 2011	74	144	156	374				
2011	Saturday, September 17, 2011	109	196	154	459				
2011	Sunday, September 18, 2011	75	186	160	421				
2011	Monday, September 19, 2011	26	56	227	309				
2011	Tuesday, September 20, 2011	39	72	233	344				
2011	Wednesday, September 21, 2011	41	65	245	351				
2011	Thursday, September 22, 2011	56	63	204	323				
2011	Friday, September 23, 2011	119	58	190	367				
2011	Saturday, September 24, 2011	203	363	194	760				
2011	Sunday, September 25, 2011	368	414	199	981	Visit Florida Gov. Con.	1,055	200	1,255
2011	Monday, September 26, 2011	158	376	220	754				
2011	Tuesday, September 27, 2011	77	211	216	504				
2011	Wednesday, September 28, 2011	33	446	247	726				
2011	Thursday, September 29, 2011	28	504	287	819				
2011	Friday, September 30, 2011	42	635	286	963	Kabbalah	8,305		8,305
2011	Saturday, October 01, 2011	353	328	260	941	Kabbalah/Siemens	4,832		4,832
2011	Sunday, October 02, 2011	342	300	195	837				
2011	Monday, October 03, 2011	246	202	212	660				
2011	Tuesday, October 04, 2011	176	181	221	578				
2011	Wednesday, October 05, 2011	119	161	243	523				
2011	Thursday, October 06, 2011	79	81	253	413				
2011	Friday, October 07, 2011	112	124	217	453				
2011	Saturday, October 08, 2011	128	178	201	507				
2011	Sunday, October 09, 2011	134	136	162	432				
2011	Monday, October 10, 2011	119	129	189	437	Columbus Day			
2011	Tuesday, October 11, 2011	141	153	196	490				
2011	Wednesday, October 12, 2011	104	126	193	423				
2011	Thursday, October 13, 2011	75	121	210	406				
2011	Friday, October 14, 2011	84	351	218	653				
2011	Saturday, October 15, 2011	229	327	165	721				
2011	Sunday, October 16, 2011	132	188	157	477				
2011	Monday, October 17, 2011	107	168	195	470				
2011	Tuesday, October 18, 2011	63	111	216	390				
2011	Wednesday, October 19, 2011	70	377	215	662				
2011	Thursday, October 20, 2011	122	316	227	665				
2011	Friday, October 21, 2011	168	398	228	794				
2011	Saturday, October 22, 2011	218	416	208	842				
2011	Sunday, October 23, 2011	241	417	166	824				
2011	Monday, October 24, 2011	187	340	207	734				
2011	Tuesday, October 25, 2011	168	294	221	683				
2011	Wednesday, October 26, 2011	162	356	226	744				
2011	Thursday, October 27, 2011	277	386	226	889	Southeast	2,415	232	2,647
2011	Friday, October 28, 2011	316	205	215	736				
2011	Saturday, October 29, 2011	202	367	178	747				
2011	Sunday, October 30, 2011	204	214	138	556				
2011	Monday, October 31, 2011	106	302	165	573	Halloween			
2011	Tuesday, November 01, 2011	171	159	206	536				
2011	Wednesday, November 02, 2011	238	146	225	609				
2011	Thursday, November 03, 2011	216	224	223	663				
2011	Friday, November 04, 2011	287	367	249	903				
2011	Saturday, November 05, 2011	198	361	215	774				
2011	Sunday, November 06, 2011	258	175	173	606				
2011	Monday, November 07, 2011	147	156	216	519				
2011	Tuesday, November 08, 2011	154	624	228	1,006	AAGL Group	6,010	6	6,016
2011	Wednesday, November 09, 2011	453	372	219	1,044	AAGL Group	5,638	181	5,819
2011	Thursday, November 10, 2011	249	189	204	642				
2011	Friday, November 11, 2011	230	273	212	715				
2011	Saturday, November 12, 2011	182	319	210	711				
2011	Sunday, November 13, 2011	240	240	177	657				
2011	Monday, November 14, 2011	206	264	201	671				
2011	Tuesday, November 15, 2011	265	354	221	840				
2011	Wednesday, November 16, 2011	438	327	193	958	Phocuswright	6,113	60	6,173
2011	Thursday, November 17, 2011	400	370	237	1,007	Diamond AAA	4,569	512	5,081
2011	Friday, November 18, 2011	372	412	215	999	Everst	1,568	504	2,072
2011	Saturday, November 19, 2011	249	498	209	956		1,035	889	1,924
2011	Sunday, November 20, 2011	220	248	149	617				
2011	Monday, November 21, 2011	138	171	142	451				
2011	Tuesday, November 22, 2011	99	237	152	488				
2011	Wednesday, November 23, 2011	108	225	158	491				
2011	Thursday, November 24, 2011	150	345	144	639	Thanksgiving Day			
2011	Friday, November 25, 2011	203	349	161	713				

Hollywood Diplomat Resort and Spa  
 Parking Utilization Study - Support Documentation

Year	Date	Self Parked Totals	Valet Parked Totals	Employee Parking	Total	Holidays/Event	Hotel Event Banquet Covers	Local/Social Event Catering Covers	Total People
2011	Saturday, November 26, 2011	189	275	176	640				
2011	Sunday, November 27, 2011	159	245	136	540				
2011	Monday, November 28, 2011	181	226	164	571				
2011	Tuesday, November 29, 2011	144	287	183	614				
2011	Wednesday, November 30, 2011	150	309	219	678				
2011	Thursday, December 01, 2011	376	327	225	928	Imedex	2,408	56	2,464
2011	Friday, December 02, 2011	408	357	227	992	Imedex	3,769	505	4,274
2011	Saturday, December 03, 2011	285	362	204	851				
2011	Sunday, December 04, 2011	264	196	167	627				
2011	Monday, December 05, 2011	93	112	202	407				
2011	Tuesday, December 06, 2011	77	138	209	424				
2011	Wednesday, December 07, 2011	66	147	215	428				
2011	Thursday, December 08, 2011	72	206	195	473				
2011	Friday, December 09, 2011	155	290	222	667				
2011	Saturday, December 10, 2011	197	365	206	768				
2011	Sunday, December 11, 2011	195	339	147	681				
2011	Monday, December 12, 2011	225	117	195	537				
2011	Tuesday, December 13, 2011	227	91	216	534				
2011	Wednesday, December 14, 2011	129	195	186	510				
2011	Thursday, December 15, 2011	160	159	168	487				
2011	Friday, December 16, 2011	148	216	185	549				
2011	Saturday, December 17, 2011	164	474	204	842				
2011	Sunday, December 18, 2011	130	307	159	596				
2011	Monday, December 19, 2011	123	229	140	492				
2011	Tuesday, December 20, 2011	141	247	141	529				
2011	Wednesday, December 21, 2011	111	188	164	463				
2011	Thursday, December 22, 2011	134	236	163	533				
2011	Friday, December 23, 2011	133	275	167	575				
2011	Saturday, December 24, 2011	161	441	158	760	Christmas Day Eve			
2011	Sunday, December 25, 2011	190	424	144	758	Christmas Day Day			
2011	Monday, December 26, 2011	221	442	141	804				
2011	Tuesday, December 27, 2011	223	132	172	527				
2011	Wednesday, December 28, 2011	188	87	186	461				
2011	Thursday, December 29, 2011	171	693	202	1,066	Orange Bowl	145		145
2011	Friday, December 30, 2011	201	350	206	757				
2011	Saturday, December 31, 2011	279	373	217	869	New Years Eve	190	705	895
2012	Sunday, January 01, 2012	278	378	157	813	New Years	150	460	610
2012	Monday, January 02, 2012	210	333	173	716				
2012	Tuesday, January 03, 2012	288	145	193	626				
2012	Wednesday, January 04, 2012	267	442	221	930	Orange Bowl	615		615
2012	Thursday, January 05, 2012	325	334	191	850				
2012	Friday, January 06, 2012	256	238	170	664				
2012	Saturday, January 07, 2012	129	356	175	660				
2012	Sunday, January 08, 2012	270	282	126	678				
2012	Monday, January 09, 2012	120	195	145	460				
2012	Tuesday, January 10, 2012	144	181	162	487				
2012	Wednesday, January 11, 2012	94	149	167	410				
2012	Thursday, January 12, 2012	100	166	177	443				
2012	Friday, January 13, 2012	146	376	177	699				
2012	Saturday, January 14, 2012	225	379	180	784				
2012	Sunday, January 15, 2012	165	306	157	628				
2012	Monday, January 16, 2012	132	260	206	598	Martin Luther King Day			
2012	Tuesday, January 17, 2012	179	227	206	612				
2012	Wednesday, January 18, 2012	105	225	211	541				
2012	Thursday, January 19, 2012	126	316	214	656				
2012	Friday, January 20, 2012	170	340	236	746				
2012	Saturday, January 21, 2012	133	432	228	793				
2012	Sunday, January 22, 2012	146	359	198	703				
2012	Monday, January 23, 2012	145	92	211	448				
2012	Tuesday, January 24, 2012	153	511	228	892	Index-Group Depart	5,133	95	5,228
2012	Wednesday, January 25, 2012	151	191	213	555	Arrival-Group			
2012	Thursday, January 26, 2012	62	115	229	406				
2012	Friday, January 27, 2012	48	97	241	386				
2012	Saturday, January 28, 2012	115	106	256	477				
2012	Sunday, January 29, 2012	92	146	161	399				
2012	Monday, January 30, 2012	72	144	200	416				
2012	Tuesday, January 31, 2012	81	110	234	425				
2012	Wednesday, February 01, 2012	76	223	214	513				
2012	Thursday, February 02, 2012	103	142	241	486				
2012	Friday, February 03, 2012	99	129	231	459				
2012	Saturday, February 04, 2012	79	104	215	398				
2012	Sunday, February 05, 2012	71	71	215	357				
2012	Monday, February 06, 2012	115	72	243	430				
2012	Tuesday, February 07, 2012	52	74	224	350				

Hollywood Diplomat Resort and Spa  
 Parking Utilization Study - Support Documentation

Year	Date	Self Parked Totals	Valet Parked Totals	Employee Parking	Total	Holidays/Event	Hotel Event Banquet Covers	Local/Social Event Catering Covers	Total People
2012	Wednesday, February 08, 2012	102	196	228	526				
2012	Thursday, February 09, 2012	133	241	212	586				
2012	Friday, February 10, 2012	168	141	222	531				
2012	Saturday, February 11, 2012	225	441	198	864				
2012	Sunday, February 12, 2012	253	280	170	703				
2012	Monday, February 13, 2012	107	254	185	546				
2012	Tuesday, February 14, 2012	138	243	210	591	Valentines Day			
2012	Wednesday, February 15, 2012	176	267	235	678				
2012	Thursday, February 16, 2012	194	367	241	802				
2012	Friday, February 17, 2012	456	371	230	1,057	No records found	2,410	60	2,470
2012	Saturday, February 18, 2012	242	591	231	1,064	Love & Hope-Catering	830	1,626	2,456
2012	Sunday, February 19, 2012	178	470	166	814				
2012	Monday, February 20, 2012	185	428	180	793	President's Day			
2012	Tuesday, February 21, 2012	167	316	210	693				
2012	Wednesday, February 22, 2012	121	265	220	606				
2012	Thursday, February 23, 2012	155	220	230	605				
2012	Friday, February 24, 2012	161	83	254	498				
2012	Saturday, February 25, 2012	146	292	225	663				
2012	Sunday, February 26, 2012	95	250	216	561				
2012	Monday, February 27, 2012	53	104	250	407				
2012	Tuesday, February 28, 2012	67	165	253	485				
2012	Wednesday, February 29, 2012	103	143	239	485				
2012	Thursday, March 01, 2012	134	206	232	572				
2012	Friday, March 02, 2012	172	350	262	784				
2012	Saturday, March 03, 2012	178	324	228	730				
2012	Sunday, March 04, 2012	173	288	187	648				
2012	Monday, March 05, 2012	128	217	220	565				
2012	Tuesday, March 06, 2012	145	169	247	561				
2012	Wednesday, March 07, 2012	339	162	246	747				
2012	Thursday, March 08, 2012	91	234	232	557				
2012	Friday, March 09, 2012	182	235	263	680				
2012	Saturday, March 10, 2012	169	269	215	653				
2012	Sunday, March 11, 2012	210	321	173	704				
2012	Monday, March 12, 2012	194	460	194	848	No records found	1,148	42	1,190
2012	Tuesday, March 13, 2012	188	251	208	647				
2012	Wednesday, March 14, 2012	209	261	223	693				
2012	Thursday, March 15, 2012	214	332	211	757				
2012	Friday, March 16, 2012	260	306	235	801				
2012	Saturday, March 17, 2012	220	300	207	727				
2012	Sunday, March 18, 2012	209	363	182	754				
2012	Monday, March 19, 2012	277	232	236	745				
2012	Tuesday, March 20, 2012	230	218	225	673				
2012	Wednesday, March 21, 2012	151	228	225	604				
2012	Thursday, March 22, 2012	138	243	251	632				
2012	Friday, March 23, 2012	201	336	218	755				
2012	Saturday, March 24, 2012	217	459	198	874	No records found	140	464	604
2012	Sunday, March 25, 2012	155	356	158	669				
2012	Monday, March 26, 2012	63	165	121	349				
2012	Tuesday, March 27, 2012	57	139	140	336				
2012	Wednesday, March 28, 2012	113	195	153	461				
2012	Thursday, March 29, 2012	136	160	177	473				
2012	Friday, March 30, 2012	176	518	207	901	No records found	646	11	657
2012	Saturday, March 31, 2012	223	429	220	872	NOVA Dinner-Catering	792	1,462	2,254
2012	Sunday, April 01, 2012	227	369	180	776				
2012	Monday, April 02, 2012	199	361	191	751				
2012	Tuesday, April 03, 2012	306	357	203	866	ACEDS-Group	1,352		1,352
2012	Wednesday, April 04, 2012	207	339	161	707				
2012	Thursday, April 05, 2012	185	354	201	740				
2012	Friday, April 06, 2012	207	361	201	769				
2012	Saturday, April 07, 2012	221	412	160	793				
2012	Sunday, April 08, 2012	230	349	175	754	Easter Sunday			
2012	Monday, April 09, 2012	189	350	183	722				
2012	Tuesday, April 10, 2012	181	354	211	746				
2012	Wednesday, April 11, 2012	178	330	193	701				
2012	Thursday, April 12, 2012	190	343	203	736				
2012	Friday, April 13, 2012	211	364	215	790				
2012	Saturday, April 14, 2012	212	356	214	782				
2012	Sunday, April 15, 2012	121	178	255	554				
2012	Monday, April 16, 2012	65	64	237	366				
2012	Tuesday, April 17, 2012	56	54	282	392				
2012	Wednesday, April 18, 2012	123	151	253	527				
2012	Thursday, April 19, 2012	186	300	224	710				
2012	Friday, April 20, 2012	117	198	238	553				
2012	Saturday, April 21, 2012	169	299	238	706				

Hollywood Diplomat Resort and Spa  
 Parking Utilization Study - Support Documentation

Year	Date	Self Parked Totals	Valet Parked Totals	Employee Parking	Total	Holidays/Event	Hotel Event Banquet Covers	Local/Social Event Catering Covers	Total People
2012	Sunday, April 22, 2012	228	322	196	746				
2012	Monday, April 23, 2012	147	214	225	586				
2012	Tuesday, April 24, 2012	152	211	234	597				
2012	Wednesday, April 25, 2012	155	243	163	561				
2012	Thursday, April 26, 2012	143	246	216	605				
2012	Friday, April 27, 2012	171	245	229	645				
2012	Saturday, April 28, 2012	215	277	233	725				
2012	Sunday, April 29, 2012	289	251	176	716				
2012	Monday, April 30, 2012	147	261	198	606				
2012	Tuesday, May 01, 2012	153	209	225	587				
2012	Wednesday, May 02, 2012	95	255	228	578				
2012	Thursday, May 03, 2012	280	334	223	837				
2012	Friday, May 04, 2012	204	361	225	790				
2012	Saturday, May 05, 2012	227	285	240	752				
2012	Sunday, May 06, 2012	200	307	181	688				
2012	Monday, May 07, 2012	145	220	200	565				
2012	Tuesday, May 08, 2012	146	181	222	549				
2012	Wednesday, May 09, 2012	140	214	235	589				
2012	Thursday, May 10, 2012	152	181	210	543				
2012	Friday, May 11, 2012	129	281	225	635				
2012	Saturday, May 12, 2012	153	185	222	560				
2012	Sunday, May 13, 2012	188	330	163	681	Mother's Day			
2012	Monday, May 14, 2012	142	73	199	414				
2012	Tuesday, May 15, 2012	167	185	230	582				
2012	Wednesday, May 16, 2012	145	290	227	662				
2012	Thursday, May 17, 2012	135	207	222	564				
2012	Friday, May 18, 2012	201	413	230	844				
2012	Saturday, May 19, 2012	227	352	232	811				
2012	Sunday, May 20, 2012	175	445	186	806				
2012	Monday, May 21, 2012	113	174	181	468				
2012	Tuesday, May 22, 2012	128	184	178	490				
2012	Wednesday, May 23, 2012	134	192	170	496				
2012	Thursday, May 24, 2012	199	353	176	728				
2012	Friday, May 25, 2012	296	236	245	777	NOVA-Catering			
2012	Saturday, May 26, 2012	332	586	224	1,142	Weddings-Catering	60	1,240	1,300
2012	Sunday, May 27, 2012	384	473	193	1,050	Memorial Day - Weekend	210	692	902
2012	Monday, May 28, 2012	225	334	170	729	Memorial Day			
2012	Tuesday, May 29, 2012	88	165	151	404				
2012	Wednesday, May 30, 2012	88	313	162	563				
2012	Thursday, May 31, 2012	127	259	194	580				
2012	Friday, June 01, 2012	213	261	213	687				
2012	Saturday, June 02, 2012	333	411	189	933	No records found	2,071	250	2,321
2012	Sunday, June 03, 2012	197	223	153	573				
2012	Monday, June 04, 2012	70	116	154	340				
2012	Tuesday, June 05, 2012	73	145	208	426				
2012	Wednesday, June 06, 2012	318	407	245	970	Pershing-Group	8,472	-	8,472
2012	Thursday, June 07, 2012	317	182	250	749				
2012	Friday, June 08, 2012	190	365	227	782				
2012	Saturday, June 09, 2012	297	346	213	856	No records found	1,150	1,782	2,932
2012	Sunday, June 10, 2012	240	383	195	818	No records found	1,092	892	1,984
2012	Monday, June 11, 2012	150	205	197	552				
2012	Tuesday, June 12, 2012	119	152	191	462				
2012	Wednesday, June 13, 2012	121	212	184	517				
2012	Thursday, June 14, 2012	111	250	211	572				
2012	Friday, June 15, 2012	168	194	196	558				
2012	Saturday, June 16, 2012	243	366	162	771				
2012	Sunday, June 17, 2012	196	359	138	693	Father's Day			
2012	Monday, June 18, 2012	146	215	176	537				
2012	Tuesday, June 19, 2012	105	183	182	470				
2012	Wednesday, June 20, 2012	110	119	202	431				
2012	Thursday, June 21, 2012	112	110	222	444				
2012	Friday, June 22, 2012	128	408	221	757				
2012	Saturday, June 23, 2012	167	294	188	649				
2012	Sunday, June 24, 2012	99	162	149	410				
2012	Monday, June 25, 2012	70	130	190	390				
2012	Tuesday, June 26, 2012	65	162	220	447				
2012	Wednesday, June 27, 2012	114	173	208	495				
2012	Thursday, June 28, 2012	156	230	162	548				
2012	Friday, June 29, 2012	146	267	167	580				
2012	Saturday, June 30, 2012	174	258	155	587				
2012	Sunday, July 01, 2012	234	354	138	726				
2012	Monday, July 02, 2012	154	239	148	541				
2012	Tuesday, July 03, 2012	216	136	170	522				
2012	Wednesday, July 04, 2012	465	427	180	1,072	Independence Day			

Hollywood Diplomat Resort and Spa  
 Parking Utilization Study - Support Documentation

Year	Date	Self Parked Totals	Valet Parked Totals	Employee Parking	Total	Holidays/Event	Hotel Event Banquet Covers	Local/Social Event Catering Covers	Total People
2012	Thursday, July 05, 2012	215	315	195	725				
2012	Friday, July 06, 2012	202	346	181	729				
2012	Saturday, July 07, 2012	237	412	179	828				
2012	Sunday, July 08, 2012	251	249	163	663				
2012	Monday, July 09, 2012	217	271	159	647				
2012	Tuesday, July 10, 2012	205	285	171	661				
2012	Wednesday, July 11, 2012	142	215	176	533				
2012	Thursday, July 12, 2012	148	300	189	637				
2012	Friday, July 13, 2012	195	382	198	775				
2012	Sunday, July 15, 2012	185	361	212	758				
2012	Monday, July 16, 2012	112	167	159	438				
2012	Tuesday, July 17, 2012	103	186	177	466				
2012	Wednesday, July 18, 2012	138	279	205	622				
2012	Thursday, July 19, 2012	148	214	201	563				
2012	Friday, July 20, 2012	206	270	218	694				
2012	Saturday, July 21, 2012	238	348	188	774				
2012	Sunday, July 22, 2012	159	376	184	719				
2012	Monday, July 23, 2012	139	279	183	601				
2012	Tuesday, July 24, 2012	145	240	207	592				
2012	Wednesday, July 25, 2012	209	136	196	541				
2012	Thursday, July 26, 2012	157	412	204	773				
2012	Friday, July 27, 2012	163	442	207	812				
2012	Saturday, July 28, 2012	213	422	190	825				
2012	Sunday, July 29, 2012	196	622	143	961	No records found	780		780
2012	Monday, July 30, 2012	144	433	144	721				
2012	Tuesday, July 31, 2012	129	144	137	410				
2012	Wednesday, August 01, 2012	123	237	144	504				
2012	Thursday, August 02, 2012	121	245	150	516				
2012	Friday, August 03, 2012	145	267	161	573				
2012	Saturday, August 04, 2012	217	345	152	714				
2012	Sunday, August 05, 2012	203	432	153	788				
2012	Monday, August 06, 2012	180	311	166	657				
2012	Tuesday, August 07, 2012	229	326	179	734				
2012	Wednesday, August 08, 2012	263	300	175	738				
2012	Thursday, August 09, 2012	153	246	166	565				
2012	Friday, August 10, 2012	147	262	170	579				
2012	Saturday, August 11, 2012	187	440	140	767				
2012	Sunday, August 12, 2012	150	236	103	489				
2012	Monday, August 13, 2012	101	307	124	532				
2012	Tuesday, August 14, 2012	100	235	124	459				
2012	Wednesday, August 15, 2012	112	224	116	452				
2012	Thursday, August 16, 2012	130	225	134	489				
2012	Friday, August 17, 2012	162	284	135	581				
2012	Saturday, August 18, 2012	248	307	131	686				
2012	Sunday, August 19, 2012	146	214	10	370				
2012	Monday, August 20, 2012	93	151	121	365				
2012	Tuesday, August 21, 2012	99	162	137	398				
2012	Wednesday, August 22, 2012	142	318	163	623				
2012	Thursday, August 23, 2012	191	372	197	760				
2012	Friday, August 24, 2012	281	577	191	1,049	Florida League-Group	6,336		6,336
2012	Saturday, August 25, 2012	278	292	159	729				
2012	Sunday, August 26, 2012	67	131	109	307				
2012	Monday, August 27, 2012	87	127	130	344				
2012	Tuesday, August 28, 2012	93	132	156	381				
2012	Wednesday, August 29, 2012	125	310	148	583				
2012	Thursday, August 30, 2012	85	216	141	442				
2012	Friday, August 31, 2012	105	220	155	480				
2012	Saturday, September 01, 2012	285	336	178	799				
2012	Sunday, September 02, 2012	308	592	150	1,050	No records found		88	88
2012	Monday, September 03, 2012	178	257	137	572	Labor Day			
2012	Tuesday, September 04, 2012	89	188	144	421				
2012	Wednesday, September 05, 2012	155	299	163	617				
2012	Thursday, September 06, 2012	195	306	176	677				
2012	Friday, September 07, 2012	149	189	171	509				
2012	Saturday, September 08, 2012	125	90	147	362				
2012	Sunday, September 09, 2012	138	192	150	480				
2012	Monday, September 10, 2012	180	288	190	658				
2012	Tuesday, September 11, 2012	171	179	195	545				
2012	Wednesday, September 12, 2012	197	104	169	470				
2012	Thursday, September 13, 2012	106	119	145	370				
2012	Friday, September 14, 2012	85	123	155	363				
2012	Saturday, September 15, 2012	142	317	164	623				
2012	Sunday, September 16, 2012	84	277	164	525				
2012	Monday, September 17, 2012	68	245	182	495				

Hollywood Diplomat Resort and Spa  
 Parking Utilization Study - Support Documentation

Year	Date	Self Parked Totals	Valet Parked Totals	Employee Parking	Total	Holidays/Event	Hotel Event Banquet Covers	Local/Social Event Catering Covers	Total People
2012	Tuesday, September 18, 2012	65	245	171	481				
2012	Wednesday, September 19, 2012	88	245	196	529				
2012	Thursday, September 20, 2012	83	205	180	468				
2012	Friday, September 21, 2012	86	217	158	461				
2012	Saturday, September 22, 2012	110	589	168	867				
2012	Sunday, September 23, 2012	92	200	139	431				
2012	Monday, September 24, 2012	84	174	167	425				
2012	Tuesday, September 25, 2012	144	154	167	465				
2012	Wednesday, September 26, 2012	202	290	163	655				
2012	Thursday, September 27, 2012	146	196	162	504				
2012	Friday, September 28, 2012	140	242	153	535				
2012	Saturday, September 29, 2012	179	375	147	701				
2012	Sunday, September 30, 2012	214	274	159	647				
2012	Monday, October 01, 2012	132	185	174	491				
2012	Tuesday, October 02, 2012	141	166	179	486				
2012	Wednesday, October 03, 2012	139	112	174	425				
2012	Thursday, October 04, 2012	77	111	157	345				
2012	Friday, October 05, 2012	122	224	163	509				
2012	Saturday, October 06, 2012	165	259	164	588				
2012	Sunday, October 07, 2012	158	157	158	473				
2012	Monday, October 08, 2012	115	204	159	478	Columbus Day			
2012	Tuesday, October 09, 2012	78	150	177	405				
2012	Wednesday, October 10, 2012	82	145	189	416				
2012	Thursday, October 11, 2012	99	155	200	454				
2012	Friday, October 12, 2012	119	165	189	473				
2012	Saturday, October 13, 2012	126	237	180	543				
2012	Sunday, October 14, 2012	126	167	177	470				
2012	Monday, October 15, 2012	175	156	195	526				
2012	Tuesday, October 16, 2012	177	170	179	526				
2012	Wednesday, October 17, 2012	158	189	208	555				
2012	Thursday, October 18, 2012	147	171	198	516				
2012	Friday, October 19, 2012	126	241	195	562				
2012	Saturday, October 20, 2012	197	266	192	655				
2012	Sunday, October 21, 2012	196	206	173	575				
2012	Monday, October 22, 2012	189	168	189	546				
2012	Tuesday, October 23, 2012	175	227	216	618				
2012	Wednesday, October 24, 2012	282	231	207	720				
2012	Thursday, October 25, 2012	306	348	195	849	Medical Tourism Group	4,024	57	4,081
2012	Friday, October 26, 2012	280	293	201	774	Medical Tourism Group			
2012	Saturday, October 27, 2012	342	279	195	816	Medical Tourism Group	408	814	1,222
2012	Sunday, October 28, 2012	134	215	173	522				
2012	Monday, October 29, 2012	180	90	203	473				
2012	Tuesday, October 30, 2012	328	152	203	683				
2012	Wednesday, October 31, 2012	153	233	201	587	Halloween			
2012	Thursday, November 01, 2012	137	212	202	551				
2012	Friday, November 02, 2012	154	235	222	611				
2012	Saturday, November 03, 2012	161	310	187	658				
2012	Sunday, November 04, 2012	141	144	162	447				
2012	Monday, November 05, 2012	128	376	189	693				
2012	Tuesday, November 06, 2012	208	263	203	674				
2012	Wednesday, November 07, 2012	251	337	212	800	Show East/ECOG-Group	2,136	427	2,563
2012	Thursday, November 08, 2012	187	281	222	690				
2012	Friday, November 09, 2012	134	199	231	564				
2012	Saturday, November 10, 2012	123	149	211	483				
2012	Sunday, November 11, 2012	105	160	175	440	Veterans Day			
2012	Monday, November 12, 2012	111	199	196	506				
2012	Tuesday, November 13, 2012	161	221	215	597				
2012	Wednesday, November 14, 2012	110	271	231	612				
2012	Thursday, November 15, 2012	177	252	218	647				
2012	Friday, November 16, 2012	171	272	205	648				
2012	Saturday, November 17, 2012	160	298	193	651				
2012	Sunday, November 18, 2012	93	168	140	401				
2012	Monday, November 19, 2012	60	135	133	328				
2012	Tuesday, November 20, 2012	101	125	145	371				
2012	Wednesday, November 21, 2012	70	137	157	364				
2012	Thursday, November 22, 2012	60	160	180	400	Thanksgiving Day			
2012	Friday, November 23, 2012	105	181	184	470				
2012	Saturday, November 24, 2012	69	177	205	451				
2012	Sunday, November 25, 2012	136	104	149	389				
2012	Monday, November 26, 2012	64	158	156	378				
2012	Tuesday, November 27, 2012	120	210	195	525				
2012	Wednesday, November 28, 2012	124	221	202	547				
2012	Thursday, November 29, 2012	117	247	203	567				
2012	Friday, November 30, 2012	118	131	194	443				

Hollywood Diplomat Resort and Spa  
 Parking Utilization Study - Support Documentation

Year	Date	Self Parked Totals	Valet Parked Totals	Employee Parking	Total	Holidays/Event	Hotel Event Banquet Covers	Local/Social Event Catering Covers	Total People
2012	Saturday, December 01, 2012	139	356	174	669				
2012	Sunday, December 02, 2012	113	195	192	500				
2012	Monday, December 03, 2012	118	109	204	431				
2012	Tuesday, December 04, 2012	141	113	208	462				
2012	Wednesday, December 05, 2012	134	123	212	469				
2012	Thursday, December 06, 2012	161	205	198	564	Various catering events			
2012	Friday, December 07, 2012	185	308	209	702	Various catering events	131	3,280	3,411
2012	Saturday, December 08, 2012	247	345	240	832				
2012	Sunday, December 09, 2012	102	260	135	497				
2012	Monday, December 10, 2012	55	85	149	289				
2012	Tuesday, December 11, 2012	40	143	185	368				
2012	Wednesday, December 12, 2012	117	111	195	423				
2012	Thursday, December 13, 2012	148	194	215	557				
2012	Friday, December 14, 2012	230	230	225	685				
2012	Saturday, December 15, 2012	232	179	197	608				
2012	Sunday, December 16, 2012	73	69	130	272				
2012	Monday, December 17, 2012	52	50	131	233				
2012	Tuesday, December 18, 2012	66	141	149	356				
2012	Wednesday, December 19, 2012	108	157	152	417				
2012	Thursday, December 20, 2012	102	163	169	434				
2012	Friday, December 21, 2012	112	275	187	574				
2012	Saturday, December 22, 2012	157	324	191	672				
2012	Sunday, December 23, 2012	212	295	167	674				
2012	Monday, December 24, 2012	138	282	157	577	Christmas Eve			
2012	Tuesday, December 25, 2012	145	362	163	670	Christmas Day			
2012	Wednesday, December 26, 2012	130	404	187	721				
2012	Thursday, December 27, 2012	154	427	152	733				
2012	Friday, December 28, 2012	167	464	193	824	Orange Bowl	197		197
2012	Saturday, December 29, 2012	139	442	175	756				
2012	Sunday, December 30, 2012	132	360	167	659				
2012	Monday, December 31, 2012	145	442	219	806	New Years Eve	912	45	957
2013	Tuesday, January 01, 2013	72	425	164	661	New Years/Orange Bowl	1,025	340	1,365
2013	Wednesday, January 02, 2013	125	267	197	589				
2013	Thursday, January 03, 2013	99	269	178	546				
2013	Friday, January 04, 2013	149	430	202	781				
2013	Saturday, January 05, 2013	204	427	199	830				
2013	Sunday, January 06, 2013	201	385	204	790				
2013	Monday, January 07, 2013	162	146	196	504				
2013	Tuesday, January 08, 2013	141	421	185	747				
2013	Wednesday, January 09, 2013	47	147	164	358				
2013	Thursday, January 10, 2013	51	142	159	352				
2013	Friday, January 11, 2013	83	182	157	422				
2013	Saturday, January 12, 2013	35	63	169	267				
2013	Sunday, January 13, 2013	79	126	143	348				
2013	Monday, January 14, 2013	98	156	195	449				
2013	Tuesday, January 15, 2013	121	156	153	430				
2013	Wednesday, January 16, 2013	107	144	232	483				
2013	Thursday, January 17, 2013	119	134	200	453				
2013	Friday, January 18, 2013	111	249	178	538				
2013	Saturday, January 19, 2013	154	251	175	580				
2013	Sunday, January 20, 2013	217	368	154	739	No records found	1,066		1,066
2013	Monday, January 21, 2013	116	279	153	548	Martin Luther King Day			
2013	Tuesday, January 22, 2013	131	261	222	614				
2013	Wednesday, January 23, 2013	84	234	216	534				
2013	Thursday, January 24, 2013	90	98	225	413				
2013	Friday, January 25, 2013	108	358	197	663				
2013	Saturday, January 26, 2013	139	454	194	787	Catholic Health	857	958	1,815
2013	Sunday, January 27, 2013	155	265	165	585				
2013	Monday, January 28, 2013	154	337	195	686				
2013	Tuesday, January 29, 2013	160	356	209	725				
2013	Wednesday, January 30, 2013	163	340	215	718				
2013	Thursday, January 31, 2013	218	322	206	746	GSK	2,563	360	2,923
2013	Friday, February 01, 2013	125	291	214	630				
2013	Saturday, February 02, 2013	216	315	206	737				
2013	Sunday, February 03, 2013	152	214	174	540				
2013	Monday, February 04, 2013	132	184	210	526				
2013	Tuesday, February 05, 2013	152	101	218	471				
2013	Wednesday, February 06, 2013	120	89	224	433				
2013	Thursday, February 07, 2013	63	282	254	599				
2013	Friday, February 08, 2013	61	145	256	462				
2013	Saturday, February 09, 2013	65	145	245	455				
2013	Sunday, February 10, 2013	67	182	191	440				
2013	Monday, February 11, 2013	149	259	209	617				
2013	Tuesday, February 12, 2013	152	287	225	664				

Hollywood Diplomat Resort and Spa  
 Parking Utilization Study - Support Documentation

Year	Date	Self Parked Totals	Valet Parked Totals	Employee Parking	Total	Holidays/Event	Hotel Event Banquet Covers	Local/Social Event Catering Covers	Total People
2013	Wednesday, February 13, 2013	122	300	219	641				
2013	Thursday, February 14, 2013	132	309	207	648	Valentines Day			
2013	Friday, February 15, 2013	144	340	195	679				
2013	Saturday, February 16, 2013	169	305	193	667				
2013	Sunday, February 17, 2013	114	318	189	621				
2013	Monday, February 18, 2013	169	408	204	781	President's Day			
2013	Tuesday, February 19, 2013	86	256	207	549				
2013	Wednesday, February 20, 2013	104	112	210	426				
2013	Thursday, February 21, 2013	72	178	229	479				
2013	Friday, February 22, 2013	108	278	217	603				
2013	Saturday, February 23, 2013	140	335	190	665				
2013	Sunday, February 24, 2013	103	135	199	437				
2013	Monday, February 25, 2013	61	105	237	403				
2013	Tuesday, February 26, 2013	72	178	223	473				
2013	Wednesday, February 27, 2013	79	273	230	582				
2013	Thursday, February 28, 2013	355	341	244	940	Friends of Defense	3,709	1,870	5,579
2013	Friday, March 01, 2013	193	243	226	662				
2013	Saturday, March 02, 2013	180	263	211	654				
2013	Sunday, March 03, 2013	105	235	178	518				
2013	Monday, March 04, 2013	75	191	195	461				
2013	Tuesday, March 05, 2013	77	99	206	382				
2013	Wednesday, March 06, 2013	107	212	235	554				
2013	Thursday, March 07, 2013	116	218	216	550				
2013	Friday, March 08, 2013	417	62	211	690				
2013	Saturday, March 09, 2013	108	124	193	425				
2013	Sunday, March 10, 2013	114	143	194	451				
2013	Monday, March 11, 2013	128	157	222	507				
2013	Tuesday, March 12, 2013	123	142	230	495				
2013	Wednesday, March 13, 2013	177	434	219	830	NCCN Group	3,543	418	3,961
2013	Thursday, March 14, 2013	340	228	200	768				
2013	Friday, March 15, 2013	213	289	206	708				
2013	Saturday, March 16, 2013	203	262	191	656				
2013	Sunday, March 17, 2013	168	268	169	605				
2013	Monday, March 18, 2013	197	274	189	660				
2013	Tuesday, March 19, 2013	182	241	208	631				
2013	Wednesday, March 20, 2013	156	216	189	561				
2013	Thursday, March 21, 2013	112	217	183	512				
2013	Friday, March 22, 2013	104	212	181	497				
2013	Saturday, March 23, 2013	79	177	182	438				
2013	Sunday, March 24, 2013	93	176	191	460				
2013	Monday, March 25, 2013	108	189	204	501				
2013	Tuesday, March 26, 2013	85	314	208	607				
2013	Wednesday, March 27, 2013	117	328	222	667				
2013	Thursday, March 28, 2013	131	418	196	745	No records found	58	121	179
2013	Friday, March 29, 2013	121	510	185	816	No records found			
2013	Saturday, March 30, 2013	141	444	169	754				
2013	Sunday, March 31, 2013	134	376	169	679	Easter Sunday			
2013	Monday, April 01, 2013	87	226	159	472				
2013	Tuesday, April 02, 2013	101	162	171	434				
2013	Wednesday, April 03, 2013	96	195	216	507				
2013	Thursday, April 04, 2013	170	177	229	576				
2013	Friday, April 05, 2013	103	217	228	548				
2013	Saturday, April 06, 2013	99	259	220	578				
2013	Sunday, April 07, 2013	126	165	195	486				
2013	Monday, April 08, 2013	284	346	244	874				
2013	Tuesday, April 09, 2013	308	522	235	1,065	Smith Bucklin	3,383	45	3,428
2013	Wednesday, April 10, 2013	269	402	242	913	Smith Bucklin	4,478	75	4,553
2013	Thursday, April 11, 2013	117	342	217	676				
2013	Friday, April 12, 2013	217	292	235	744				
2013	Saturday, April 13, 2013	212	430	223	865				
2013	Sunday, April 14, 2013	149	442	168	759				
2013	Monday, April 15, 2013	117	266	191	574				
2013	Tuesday, April 16, 2013	124	266	199	589				
2013	Wednesday, April 17, 2013	75	189	205	469				
2013	Thursday, April 18, 2013	97	239	211	547				
2013	Friday, April 19, 2013	70	122	214	406				
2013	Saturday, April 20, 2013	104	174	218	496				
2013	Sunday, April 21, 2013	79	126	164	369				
2013	Monday, April 22, 2013	74	169	184	427				
2013	Tuesday, April 23, 2013	92	187	208	487				
2013	Wednesday, April 24, 2013	111	256	208	575				
2013	Thursday, April 25, 2013	166	259	195	620				
2013	Friday, April 26, 2013	138	299	178	615				
2013	Saturday, April 27, 2013	171	317	180	668				



Hollywood Diplomat Resort and Spa  
 Parking Utilization Study - Support Documentation

Year	Date	Self Parked Totals	Valet Parked Totals	Employee Parking	Total	Holidays/Event	Hotel Event Banquet Covers	Local/Social Event Catering Covers	Total People
2013	Sunday, April 28, 2013	150	280	185	615				
2013	Monday, April 29, 2013	126	291	198	615				
2013	Tuesday, April 30, 2013	157	289	207	653				
2013	Wednesday, May 01, 2013	98	236	229	563				
2013	Thursday, May 02, 2013	121	235	214	570				
2013	Friday, May 03, 2013	139	333	21	493				
2013	Saturday, May 04, 2013	322	357	203	882				
2013	Sunday, May 05, 2013	217	348	173	738				
2013	Monday, May 06, 2013	121	277	189	587				
2013	Tuesday, May 07, 2013	139	296	206	641				
2013	Wednesday, May 08, 2013	153	236	213	602				
2013	Thursday, May 09, 2013	162	249	234	645				
2013	Friday, May 10, 2013	188	265	211	664				
2013	Saturday, May 11, 2013	421	455	156	1,032				
2013	Sunday, May 12, 2013	256	382	183	821	Mother's Day			
2013	Monday, May 13, 2013	122	287	204	613				
2013	Tuesday, May 14, 2013	110	236	221	567				
2013	Wednesday, May 15, 2013	150	229	222	601				
2013	Thursday, May 16, 2013	153	260	212	625				
2013	Friday, May 17, 2013	259	306	238	803				
2013	Saturday, May 18, 2013	270	379	216	865				
2013	Sunday, May 19, 2013	158	382	175	715				
2013	Monday, May 20, 2013	104	345	194	643				
2013	Tuesday, May 21, 2013	104	170	218	492				
2013	Wednesday, May 22, 2013	125	219	226	570				
2013	Thursday, May 23, 2013	146	206	220	572				
2013	Friday, May 24, 2013	248	329	221	798				
2013	Saturday, May 25, 2013	454	446	247	1,147	Cypress Prom & Wedding			
2013	Sunday, May 26, 2013	777	708	193	1,678	Wedding (350 Guest)	30	1,691	1,721
2013	Monday, May 27, 2013	279	352	180	811	Memorial Day			
2013	Tuesday, May 28, 2013	127	241	202	570				
2013	Wednesday, May 29, 2013	193	304	199	696				
2013	Thursday, May 30, 2013	150	345	208	703				
2013	Friday, May 31, 2013	141	240	202	583				
2013	Saturday, June 01, 2013	176	262	187	625				
2013	Sunday, June 02, 2013	136	191	151	478				
2013	Monday, June 03, 2013	34	184	182	400				
2013	Tuesday, June 04, 2013	133	159	211	503				
2013	Wednesday, June 05, 2013	311	307	235	853				
2013	Thursday, June 06, 2013	581	290	233	1,104	Pershing Drive	10,239	12	10,251
2013	Friday, June 07, 2013	321	299	222	842				
2013	Saturday, June 08, 2013	201	267	185	653				
2013	Sunday, June 09, 2013	143	205	187	535				
2013	Monday, June 10, 2013	73	146	206	425				
2013	Tuesday, June 11, 2013	132	155	196	483				
2013	Wednesday, June 12, 2013	73	138	198	409				
2013	Thursday, June 13, 2013	104	147	167	418				
2013	Friday, June 14, 2013	177	251	165	593				
2013	Saturday, June 15, 2013	423	583	192	1,198	Florida Democrat Conv.	20	1,837	1,857
2013	Sunday, June 16, 2013	269	567	145	981	Father's Day			
2013	Monday, June 17, 2013	115	252	159	526				
2013	Tuesday, June 18, 2013	113	182	175	470				
2013	Wednesday, June 19, 2013	84	213	179	476				
2013	Thursday, June 20, 2013	93	113	181	387				
2013	Friday, June 21, 2013	176	427	171	774				
2013	Saturday, June 22, 2013	243	421	160	824				
2013	Sunday, June 23, 2013	238	272	162	672				
2013	Monday, June 24, 2013	180	132	184	496				
2013	Tuesday, June 25, 2013	111	172	212	495				
2013	Wednesday, June 26, 2013	200	164	223	587				
2013	Thursday, June 27, 2013	138	229	213	580				
2013	Friday, June 28, 2013	267	364	187	818				
2013	Saturday, June 29, 2013	272	539	179	990	General Federation W.	1,301	24	1,325
2013	Sunday, June 30, 2013	377	425	164	966				
2013	Monday, July 01, 2013	137	269	171	577				
2013	Tuesday, July 02, 2013	129	209	185	523				
2013	Wednesday, July 03, 2013	146	260	172	578				
2013	Thursday, July 04, 2013	518	490	180	1,188	Holiday Traci Lynn	150		150
2013	Friday, July 05, 2013	358	495	195	1,048	Holiday Traci Lynn	1,165		1,165
2013	Saturday, July 06, 2013	263	521	188	972	Holiday Traci Lynn			
2013	Sunday, July 07, 2013	172	222	155	549				
2013	Monday, July 08, 2013	104	202	160	466				
2013	Tuesday, July 09, 2013	171	237	181	589				
2013	Wednesday, July 10, 2013	189	296	200	685				

Hollywood Diplomat Resort and Spa  
 Parking Utilization Study - Support Documentation

Year	Date	Self Parked Totals	Valet Parked Totals	Employee Parking	Total	Holidays/Event	Hotel Event Banquet Covers	Local/Social Event Catering Covers	Total People
2013	Thursday, July 11, 2013	300	301	198	799				
2013	Friday, July 12, 2013	296	354	174	824				
2013	Saturday, July 13, 2013	226	347	161	734				
2013	Sunday, July 14, 2013	113	324	131	568				
2013	Monday, July 15, 2013	106	167	148	421				
2013	Tuesday, July 16, 2013	128	178	180	486				
2013	Wednesday, July 17, 2013	194	283	207	684				
2013	Thursday, July 18, 2013	291	291	219	801				
2013	Friday, July 19, 2013	254	296	222	772				
2013	Saturday, July 20, 2013	354	362	183	899				
2013	Sunday, July 21, 2013	197	336	149	682				
2013	Monday, July 22, 2013	118	224	182	524				
2013	Tuesday, July 23, 2013	167	281	199	647				
2013	Wednesday, July 24, 2013	136	257	201	594				
2013	Thursday, July 25, 2013	172	231	205	608				
2013	Friday, July 26, 2013	254	303	177	734				
2013	Saturday, July 27, 2013	252	417	172	841				
2013	Sunday, July 28, 2013	251	336	159	746				
2013	Monday, July 29, 2013	160	238	183	581				
2013	Tuesday, July 30, 2013	155	243	198	596				
2013	Wednesday, July 31, 2013	137	161	190	488				
2013	Thursday, August 01, 2013	130	210	174	514				
2013	Friday, August 02, 2013	211	262	157	630				
2013	Saturday, August 03, 2013	100	367	148	615				
2013	Sunday, August 04, 2013	238	207	160	605				
2013	Monday, August 05, 2013	373	496	187	1,056				
2013	Tuesday, August 06, 2013	730	499	187	1,416	Florida Healthcare	950	216	1,166
2013	Wednesday, August 07, 2013	479	333	192	1,004				
2013	Thursday, August 08, 2013	210	258	174	642				
2013	Friday, August 09, 2013	171	43	161	375				
2013	Saturday, August 10, 2013	211	596	172	979				
2013	Sunday, August 11, 2013	181	443	167	791				
2013	Monday, August 12, 2013	160	363	178	701				
2013	Tuesday, August 13, 2013	179	312	190	681				
2013	Wednesday, August 14, 2013	182	268	174	624				
2013	Thursday, August 15, 2013	149	326	160	635				
2013	Friday, August 16, 2013	302	519	162	983				
2013	Saturday, August 17, 2013	351	381	157	889				
2013	Sunday, August 18, 2013	302	373	148	823				
2013	Monday, August 19, 2013	250	193	160	603				
2013	Tuesday, August 20, 2013	252	258	164	674				
2013	Wednesday, August 21, 2013	162	231	173	566				
2013	Thursday, August 22, 2013	184	252	162	598				
2013	Friday, August 23, 2013	244	268	150	662				
2013	Saturday, August 24, 2013	218	344	135	697				
2013	Sunday, August 25, 2013	159	250	123	532				
2013	Monday, August 26, 2013	104	242	134	480				
2013	Tuesday, August 27, 2013	90	204	145	439				
2013	Wednesday, August 28, 2013	149	220	162	531				
2013	Thursday, August 29, 2013	202	254	189	645				
2013	Friday, August 30, 2013	445	339	200	984				
2013	Saturday, August 31, 2013	646	436	200	1,282	Florida Marine	1,555	585	2,140
2013	Sunday, September 01, 2013	490	340	162	992	Florida Marine	808		808
2013	Monday, September 02, 2013	181	155	147	483	Labor Day			
2013	Tuesday, September 03, 2013	146	167	174	487				
2013	Wednesday, September 04, 2013	147	202	181	530				
2013	Thursday, September 05, 2013	155	224	183	562				
2013	Friday, September 06, 2013	187	290	180	657				
2013	Saturday, September 07, 2013	180	331	168	679				
2013	Sunday, September 08, 2013	97	133	109	339				
2013	Monday, September 09, 2013	50	80	106	236				
2013	Tuesday, September 10, 2013	60	81	109	250				
2013	Wednesday, September 11, 2013	59	100	116	275				
2013	Thursday, September 12, 2013	60	100	120	280				
2013	Friday, September 13, 2013	107	265	143	515				
2013	Saturday, September 14, 2013	134	199	124	457				
2013	Sunday, September 15, 2013	80	121	99	300				
2013	Monday, September 16, 2013	54	99	110	263				
2013	Tuesday, September 17, 2013	46	112	123	281				
2013	Wednesday, September 18, 2013	60	135	129	324				
2013	Thursday, September 19, 2013	58	110	134	302				
2013	Friday, September 20, 2013	93	190	145	428				
2013	Saturday, September 21, 2013	159	289	136	584				
2013	Sunday, September 22, 2013	145	195	164	504				

Hollywood Diplomat Resort and Spa  
 Parking Utilization Study - Support Documentation

Year	Date	Self Parked Totals	Valet Parked Totals	Employee Parking	Total	Holidays/Event	Hotel Event Banquet Covers	Local/Social Event Catering Covers	Total People
2013	Monday, September 23, 2013	137	176	190	503				
2013	Tuesday, September 24, 2013	136	144	204	484				
2013	Wednesday, September 25, 2013	119	175	192	486				
2013	Thursday, September 26, 2013	308	253	193	754	Quirch Food			
2013	Friday, September 27, 2013	230	443	175	848	Quirch Food			
2013	Saturday, September 28, 2013	255	380	164	799	Quirch Food			
2013	Sunday, September 29, 2013	217	308	158	683				
2013	Monday, September 30, 2013	120	210	177	507				
2013	Tuesday, October 01, 2013	102	114	195	411				
2013	Wednesday, October 02, 2013	65	225	182	472				
2013	Thursday, October 03, 2013	77	126	155	358				
2013	Friday, October 04, 2013	115	207	150	472				
2013	Saturday, October 05, 2013	151	388	138	677				
2013	Sunday, October 06, 2013	152	251	158	561				
2013	Monday, October 07, 2013	137	213	191	541				
2013	Tuesday, October 08, 2013	271	328	202	801				
2013	Wednesday, October 09, 2013	252	278	219	749				
2013	Thursday, October 10, 2013	137	217	192	546				
2013	Friday, October 11, 2013	269	225	193	687				
2013	Saturday, October 12, 2013	205	299	159	663				
2013	Sunday, October 13, 2013	156	275	139	570				
2013	Monday, October 14, 2013	84	201	173	458	Columbus Day			
2013	Tuesday, October 15, 2013	48	145	199	392				
2013	Wednesday, October 16, 2013	65	150	193	408				
2013	Thursday, October 17, 2013	87	265	193	545				
2013	Friday, October 18, 2013	113	174	188	475				
2013	Saturday, October 19, 2013	165	279	168	612				
2013	Sunday, October 20, 2013	120	268	149	537				
2013	Monday, October 21, 2013	123	250	186	559				
2013	Tuesday, October 22, 2013	152	269	209	630				
2013	Wednesday, October 23, 2013	191	284	212	687				
2013	Thursday, October 24, 2013	230	308	220	758				
2013	Friday, October 25, 2013	219	468	222	909	Show East	2,070	1,461	3,531
2013	Saturday, October 26, 2013	206	270	175	651				
2013	Sunday, October 27, 2013	301	226	128	655				
2013	Monday, October 28, 2013	110	153	141	404				
2013	Tuesday, October 29, 2013	83	213	153	449				
2013	Wednesday, October 30, 2013	124	183	143	450				
2013	Thursday, October 31, 2013	231	257	148	636	Halloween			
2013	Friday, November 01, 2013	407	329	171	907				
2013	Saturday, November 02, 2013	451	585	170	1,206	Yoga/Usana group	731	462	1,193
2013	Sunday, November 03, 2013	392	209	156	757				
2013	Monday, November 04, 2013	87	319	196	602				
2013	Tuesday, November 05, 2013	95	159	216	470				
2013	Wednesday, November 06, 2013	104	177	203	484				
2013	Thursday, November 07, 2013	103	201	214	518				
2013	Friday, November 08, 2013	162	285	209	656				
2013	Saturday, November 09, 2013	192	288	209	689				
2013	Sunday, November 10, 2013	135	189	174	498				
2013	Monday, November 11, 2013	100	430	189	719	Veterans Day			
2013	Tuesday, November 12, 2013	122	292	208	622				
2013	Wednesday, November 13, 2013	111	184	212	507				
2013	Thursday, November 14, 2013	144	172	226	542				
2013	Friday, November 15, 2013	97	196	211	504				
2013	Saturday, November 16, 2013	178	341	225	744				
2013	Sunday, November 17, 2013	124	252	170	546				
2013	Monday, November 18, 2013	144	190	184	518				
2013	Tuesday, November 19, 2013	131	263	220	614				
2013	Wednesday, November 20, 2013	210	266	222	698				
2013	Thursday, November 21, 2013	160	193	213	566				
2013	Friday, November 22, 2013	171	181	189	541				
2013	Saturday, November 23, 2013	113	243	205	561				
2013	Sunday, November 24, 2013	163	184	192	539				
2013	Monday, November 25, 2013	97	344	167	608				
2013	Tuesday, November 26, 2013	68	142	155	365				
2013	Wednesday, November 27, 2013	96	180	141	417				
2013	Thursday, November 28, 2013	110	148	131	389	Thanksgiving			
2013	Friday, November 29, 2013	157	318	137	612				
2013	Saturday, November 30, 2013	149	253	135	537				
2013	Sunday, December 01, 2013	125	267	118	510				
2013	Monday, December 02, 2013	47	201	156	404				
2013	Tuesday, December 03, 2013	77	168	176	421				
2013	Wednesday, December 04, 2013	86	194	185	465				
2013	Thursday, December 05, 2013	102	221	198	521				

Hollywood Diplomat Resort and Spa  
 Parking Utilization Study - Support Documentation

Year	Date	Self Parked Totals	Valet Parked Totals	Employee Parking	Total	Holidays/Event	Hotel Event Banquet Covers	Local/Social Event Catering Covers	Total People
2013	Friday, December 06, 2013	178	271	211	660				
2013	Saturday, December 07, 2013	272	369	185	826				
2013	Sunday, December 08, 2013	136	155	189	480				
2013	Monday, December 09, 2013	196	114	201	511				
2013	Tuesday, December 10, 2013	133	100	207	440				
2013	Wednesday, December 11, 2013	138	107	214	459				
2013	Thursday, December 12, 2013	214	198	234	646				
2013	Friday, December 13, 2013	237	233	243	713				
2013	Saturday, December 14, 2013	553	297	198	1,048	Imedex	4,654	973	5,627
2013	Sunday, December 15, 2013	94	155	152	401				
2013	Monday, December 16, 2013	90	185	150	425				
2013	Tuesday, December 17, 2013	70	164	148	382				
2013	Wednesday, December 18, 2013	149	195	143	487				
2013	Thursday, December 19, 2013	170	188	135	493				
2013	Friday, December 20, 2013	159	228	149	536				
2013	Saturday, December 21, 2013	208	317	157	682				
2013	Sunday, December 22, 2013	158	252	129	539				
2013	Monday, December 23, 2013	147	253	147	547				
2013	Tuesday, December 24, 2013	164	339	157	660	Christmas Eve			
2013	Wednesday, December 25, 2013	345	381	150	876	Christmas			
2013	Thursday, December 26, 2013	181	367	177	725				
2013	Friday, December 27, 2013	167	381	182	730				
2013	Saturday, December 28, 2013	151	360	173	684				
2013	Sunday, December 29, 2013	155	376	170	701				
2013	Monday, December 30, 2013	199	351	178	728				
2013	Tuesday, December 31, 2013	214	372	206	792	New Years Eve			
2014	Wednesday, January 01, 2014	137	313	169	619	New Years			
2014	Thursday, January 02, 2014	137	293	195	625				
2014	Friday, January 03, 2014	131	290	197	618				
2014	Saturday, January 04, 2014	161	252	169	582				
2014	Sunday, January 05, 2014	85	127	181	393				
2014	Monday, January 06, 2014	45	118	213	376				
2014	Tuesday, January 07, 2014	82	158	202	442				
2014	Wednesday, January 08, 2014	131	182	208	521				
2014	Thursday, January 09, 2014	186	232	225	643				
2014	Friday, January 10, 2014	147	212	221	580				
2014	Saturday, January 11, 2014	227	395	187	809	Zero to Three Group	1,209	1,672	2,881
2014	Sunday, January 12, 2014	111	247	148	506				
2014	Monday, January 13, 2014	163	227	186	576				
2014	Tuesday, January 14, 2014	105	243	199	547				
2014	Wednesday, January 15, 2014	153	289	217	659				
2014	Thursday, January 16, 2014	203	327	213	743	No records found	3,028		3,028
2014	Friday, January 17, 2014	197	373	206	776	No records found	2,028	222	2,250
2014	Saturday, January 18, 2014	150	337	210	697				
2014	Sunday, January 19, 2014	180	287	200	667				
2014	Monday, January 20, 2014	78	196	221	495	Martin Luther King Day			
2014	Tuesday, January 21, 2014	69	188	212	469				
2014	Wednesday, January 22, 2014	57	183	188	428				
2014	Thursday, January 23, 2014	54	118	218	390				
2014	Friday, January 24, 2014	81	168	245	494				
2014	Saturday, January 25, 2014	104	176	242	522				
2014	Sunday, January 26, 2014	325	132	199	656				
2014	Monday, January 27, 2014	186	257	233	676				
2014	Tuesday, January 28, 2014	151	174	247	572				
2014	Wednesday, January 29, 2014	120	236	224	580				
2014	Thursday, January 30, 2014	109	242	218	569				
2014	Friday, January 31, 2014	125	276	194	595				
2014	Saturday, February 01, 2014	167	338	171	676				
2014	Sunday, February 02, 2014	134	266	139	539				
2014	Monday, February 03, 2014	103	234	187	524				
2014	Tuesday, February 04, 2014	55	250	230	535				
2014	Wednesday, February 05, 2014	104	269	205	578				
2014	Thursday, February 06, 2014	57	268	208	533				
2014	Friday, February 07, 2014	104	288	210	602				
2014	Saturday, February 08, 2014	119	323	205	647				
2014	Sunday, February 09, 2014	93	243	191	527				
2014	Monday, February 10, 2014	99	219	208	526				
2014	Tuesday, February 11, 2014	103	235	216	554				
2014	Wednesday, February 12, 2014	106	253	216	575				
2014	Thursday, February 13, 2014	260	98	226	584				
2014	Friday, February 14, 2014	127	313	211	651	Valentines Day			
2014	Saturday, February 15, 2014	154	510	209	873	Love & Hope	600	1,498	2,098
2014	Sunday, February 16, 2014	136	305	158	599				
2014	Monday, February 17, 2014	105	258	195	558	President's Day			

Hollywood Diplomat Resort and Spa  
 Parking Utilization Study - Support Documentation

Year	Date	Self Parked Totals	Valet Parked Totals	Employee Parking	Total	Holidays/Event	Hotel Event Banquet Covers	Local/Social Event Catering Covers	Total People
2014	Tuesday, February 18, 2014	81	199	205	485				
2014	Wednesday, February 19, 2014	85	292	203	580				
2014	Thursday, February 20, 2014	122	266	237	625				
2014	Friday, February 21, 2014	162	313	209	684				
2014	Saturday, February 22, 2014	100	259	204	563				
2014	Sunday, February 23, 2014	92	125	215	432				
2014	Monday, February 24, 2014	79	114	243	436				
2014	Tuesday, February 25, 2014	86	141	236	463				
2014	Wednesday, February 26, 2014	114	227	236	577				
2014	Thursday, February 27, 2014	185	382	242	809				
2014	Friday, February 28, 2014	208	316	234	758				
2014	Saturday, March 01, 2014	212	460	219	891	No records found	460	456	916
2014	Sunday, March 02, 2014	132	335	192	659				
2014	Monday, March 03, 2014	70	187	214	471				
2014	Tuesday, March 04, 2014	70	176	212	458				
2014	Wednesday, March 05, 2014	154	226	224	604				
2014	Thursday, March 06, 2014	181	268	222	671				
2014	Friday, March 07, 2014	183	367	207	757				
2014	Saturday, March 08, 2014	223	290	212	725				
2014	Sunday, March 09, 2014	182	256	183	621				
2014	Monday, March 10, 2014	142	212	225	579				
2014	Tuesday, March 11, 2014	135	202	221	558				
2014	Wednesday, March 12, 2014	149	236	210	595				
2014	Thursday, March 13, 2014	158	265	206	629				
2014	Friday, March 14, 2014	175	287	207	669				
2014	Saturday, March 15, 2014	243	338	195	776				
2014	Sunday, March 16, 2014	138	279	173	590				
2014	Monday, March 17, 2014	181	210	203	594				
2014	Tuesday, March 18, 2014	204	276	218	698				
2014	Wednesday, March 19, 2014	198	275	216	689				
2014	Thursday, March 20, 2014	175	397	204	776				
2014	Friday, March 21, 2014	195	395	211	801				
2014	Saturday, March 22, 2014	208	431	193	832				
2014	Sunday, March 23, 2014	252	301	173	726				
2014	Monday, March 24, 2014	150	250	191	591				
2014	Tuesday, March 25, 2014	142	260	208	610				
2014	Wednesday, March 26, 2014	191	362	220	773				
2014	Thursday, March 27, 2014	162	557	204	923	No records found	212		212
2014	Friday, March 28, 2014	153	381	196	730				
2014	Saturday, March 29, 2014	160	485	198	843				
2014	Sunday, March 30, 2014	254	280	194	728				
2014	Monday, March 31, 2014	125	229	206	560				
2014	Tuesday, April 01, 2014	72	154	211	437				
2014	Wednesday, April 02, 2014	116	237	217	570				
2014	Thursday, April 03, 2014	160	292	212	664				
2014	Friday, April 04, 2014	167	486	234	887	Akerman	2,783	2,952	5,735
2014	Saturday, April 05, 2014	208	469	210	887	NOVA	486	1,439	1,925
2014	Sunday, April 06, 2014	214	386	168	768				
2014	Monday, April 07, 2014	126	231	199	556				
2014	Tuesday, April 08, 2014	201	236	211	648				
2014	Wednesday, April 09, 2014	208	192	223	623				
2014	Thursday, April 10, 2014	145	223	232	600				
2014	Friday, April 11, 2014	167	275	228	670				
2014	Saturday, April 12, 2014	324	278	190	792				
2014	Sunday, April 13, 2014	142	288	207	637				
2014	Monday, April 14, 2014	102	240	277	619				
2014	Tuesday, April 15, 2014	120	387	268	775				
2014	Wednesday, April 16, 2014	160	278	262	700				
2014	Thursday, April 17, 2014	157	355	265	777				
2014	Friday, April 18, 2014	127	318	262	707				
2014	Saturday, April 19, 2014	132	341	237	710				
2014	Sunday, April 20, 2014	234	321	228	783	Easter Sunday			
2014	Monday, April 21, 2014	79	243	242	564				
2014	Tuesday, April 22, 2014	76	202	251	529				
2014	Wednesday, April 23, 2014	77	172	218	467				
2014	Thursday, April 24, 2014	67	132	255	454				
2014	Friday, April 25, 2014	70	108	261	439				
2014	Saturday, April 26, 2014	95	113	238	446				
2014	Sunday, April 27, 2014	106	137	177	420				
2014	Monday, April 28, 2014	111	166	209	486				
2014	Tuesday, April 29, 2014	92	134	209	435				
2014	Wednesday, April 30, 2014	55	124	214	393				
2014	Thursday, May 01, 2014	181	283	232	696				
2014	Friday, May 02, 2014	212	340	236	788				

Hollywood Diplomat Resort and Spa  
 Parking Utilization Study - Support Documentation

Year	Date	Self Parked Totals	Valet Parked Totals	Employee Parking	Total	Holidays/Event	Hotel Event Banquet Covers	Local/Social Event Catering Covers	Total People
2014	Saturday, May 03, 2014	163	284	195	642				
2014	Sunday, May 04, 2014	125	226	149	500				
2014	Monday, May 05, 2014	90	155	200	445				
2014	Tuesday, May 06, 2014	115	163	220	498				
2014	Wednesday, May 07, 2014	124	166	205	495				
2014	Thursday, May 08, 2014	156	155	185	496				
2014	Friday, May 09, 2014	266	377	211	854	Cooper City Prom	1,941	1,140	3,081
2014	Saturday, May 10, 2014	235	856	215	1,306				
2014	Sunday, May 11, 2014	256	340	158	754	Mother's Day			
2014	Monday, May 12, 2014	93	165	188	446				
2014	Tuesday, May 13, 2014	114	160	203	477				
2014	Wednesday, May 14, 2014	125	167	209	501				
2014	Thursday, May 15, 2014	207	211	252	670				
2014	Friday, May 16, 2014	118	199	209	526				
2014	Saturday, May 17, 2014	185	246	194	625				
2014	Sunday, May 18, 2014	261	401	192	854				
2014	Monday, May 19, 2014	276	225	211	712				
2014	Tuesday, May 20, 2014	255	202	213	670				
2014	Wednesday, May 21, 2014	149	222	205	576				
2014	Thursday, May 22, 2014	102	240	185	527				
2014	Friday, May 23, 2014	184	371	190	745				
2014	Saturday, May 24, 2014	279	428	224	931				
2014	Sunday, May 25, 2014	450	445	166	1,061	No records found			
2014	Monday, May 26, 2014	265	399	155	819	Memorial Day			
2014	Tuesday, May 27, 2014	97	179	175	451				
2014	Wednesday, May 28, 2014	127	205	188	520				
2014	Thursday, May 29, 2014	111	220	198	529				
2014	Friday, May 30, 2014	97	176	188	461				
2014	Saturday, May 31, 2014	242	593	187	1,022	Catering event			
2014	Sunday, June 01, 2014	164	813	162	1,139	GT Nexus Group	692	50	742
2014	Monday, June 02, 2014	71	153	188	412				
2014	Tuesday, June 03, 2014	72	157	221	450				
2014	Wednesday, June 04, 2014	289	283	240	812				
2014	Thursday, June 05, 2014	254	272	240	766				
2014	Friday, June 06, 2014	173	269	206	648				
2014	Saturday, June 07, 2014	228	373	184	785				
2014	Sunday, June 08, 2014	185	402	182	769				
2014	Monday, June 09, 2014	127	194	223	544				
2014	Tuesday, June 10, 2014	163	194	215	572				
2014	Wednesday, June 11, 2014	116	215	200	531				
2014	Thursday, June 12, 2014	132	263	218	613				
2014	Friday, June 13, 2014	150	304	228	682				
2014	Saturday, June 14, 2014	160	272	193	625				
2014	Sunday, June 15, 2014	153	201	164	518	Father's Day			
2014	Monday, June 16, 2014	111	190	184	485				
2014	Tuesday, June 17, 2014	129	191	201	521				
2014	Wednesday, June 18, 2014	155	241	199	595				
2014	Thursday, June 19, 2014	165	292	211	668				
2014	Friday, June 20, 2014	297	314	204	815				
2014	Saturday, June 21, 2014	329	531	184	1,044				
2014	Sunday, June 22, 2014	205	272	170	647				
2014	Monday, June 23, 2014	119	182	191	492				
2014	Tuesday, June 24, 2014	159	225	205	589				
2014	Wednesday, June 25, 2014	148	254	203	605				
2014	Thursday, June 26, 2014	148	251	189	588				
2014	Friday, June 27, 2014	230	354	179	763				
2014	Saturday, June 28, 2014	472	408	207	1,087	No records found	287	2,378	2,665
2014	Sunday, June 29, 2014	210	355	140	705				
2014	Monday, June 30, 2014	103	208	146	457				
2014	Tuesday, July 01, 2014	129	256	158	543				
2014	Wednesday, July 02, 2014	132	220	161	513				
2014	Thursday, July 03, 2014	161	348	173	682				
2014	Friday, July 04, 2014	378	519	170	1,067	Independence Day	98		98
2014	Saturday, July 05, 2014	288	558	167	1,013	No records found			
2014	Sunday, July 06, 2014	221	251	143	615				
2014	Monday, July 07, 2014	112	233	149	494				
2014	Tuesday, July 08, 2014	91	151	155	397				
2014	Wednesday, July 09, 2014	109	227	165	501				
2014	Thursday, July 10, 2014	163	264	198	625				
2014	Friday, July 11, 2014	235	327	188	750				
2014	Saturday, July 12, 2014	275	420	167	862				
2014	Sunday, July 13, 2014	223	297	161	681				
2014	Monday, July 14, 2014	103	271	206	580				
2014	Tuesday, July 15, 2014	138	209	215	562				

Hollywood Diplomat Resort and Spa  
 Parking Utilization Study - Support Documentation

Year	Date	Self Parked Totals	Valet Parked Totals	Employee Parking	Total	Holidays/Event	Hotel Event Banquet Covers	Local/Social Event Catering Covers	Total People
2014	Wednesday, July 16, 2014	103	247	207	557				
2014	Thursday, July 17, 2014	144	251	211	606				
2014	Friday, July 18, 2014	190	284	189	663				
2014	Saturday, July 19, 2014	286	355	178	819				
2014	Sunday, July 20, 2014	186	302	157	645				
2014	Monday, July 21, 2014	129	234	179	542				
2014	Tuesday, July 22, 2014	120	250	197	567				
2014	Wednesday, July 23, 2014	146	248	187	581				
2014	Thursday, July 24, 2014	105	240	195	540				
2014	Friday, July 25, 2014	132	230	200	562				
2014	Saturday, July 26, 2014	168	268	191	627				
2014	Sunday, July 27, 2014	215	373	181	769				
2014	Monday, July 28, 2014	122	272	183	577				
2014	Tuesday, July 29, 2014	105	239	174	518				
2014	Wednesday, July 30, 2014	173	265	185	623				
2014	Thursday, July 31, 2014	307	389	206	902				
2014	Friday, August 01, 2014	581	556	199	1,336	Dwayne Wade	2,657	20	2,677
2014	Saturday, August 02, 2014	289	506	169	964				
2014	Sunday, August 03, 2014	200	297	151	648				
2014	Monday, August 04, 2014	134	286	161	581				
2014	Tuesday, August 05, 2014	147	269	165	581				
2014	Wednesday, August 06, 2014	217	314	174	705				
2014	Thursday, August 07, 2014	187	480	177	844				
2014	Friday, August 08, 2014	299	331	190	820				
2014	Saturday, August 09, 2014	368	512	178	1,058				
2014	Sunday, August 10, 2014	192	299	134	625				
2014	Monday, August 11, 2014	98	227	144	469				
2014	Tuesday, August 12, 2014	100	210	146	456				
2014	Wednesday, August 13, 2014	296	186	170	652				
2014	Thursday, August 14, 2014	587	225	203	1,015				
2014	Friday, August 15, 2014	384	462	209	1,055				
2014	Saturday, August 16, 2014	387	379	198	964				
2014	Sunday, August 17, 2014	171	301	156	628				
2014	Monday, August 18, 2014	88	172	185	445				
2014	Tuesday, August 19, 2014	92	176	211	479				
2014	Wednesday, August 20, 2014	121	237	214	572				
2014	Thursday, August 21, 2014	105	253	200	558				
2014	Friday, August 22, 2014	96	264	200	560				
2014	Saturday, August 23, 2014	117	251	200	568				
2014	Sunday, August 24, 2014	98	169	191	458				
2014	Monday, August 25, 2014	79	163	186	428				
2014	Tuesday, August 26, 2014	78	159	201	438				
2014	Wednesday, August 27, 2014	106	151	202	459				
2014	Thursday, August 28, 2014	135	230	189	554				
2014	Friday, August 29, 2014	182	403	171	756				
2014	Saturday, August 30, 2014	312	485	187	984				
2014	Sunday, August 31, 2014	293	457	157	907				
2014	Monday, September 01, 2014	193	301	147	641	Labor Day			
2014	Tuesday, September 02, 2014	106	209	160	475				
2014	Wednesday, September 03, 2014	115	210	163	488				
2014	Thursday, September 04, 2014	202	249	157	608				
2014	Friday, September 05, 2014	223	233	157	613				
2014	Saturday, September 06, 2014	148	278	162	588				
2014	Sunday, September 07, 2014	149	201	154	504				
2014	Monday, September 08, 2014	104	183	188	475				
2014	Tuesday, September 09, 2014	100	207	194	501				
2014	Wednesday, September 10, 2014	122	143	192	457				
2014	Thursday, September 11, 2014	139	189	192	520				
2014	Friday, September 12, 2014	109	186	163	458				
2014	Saturday, September 13, 2014	151	211	140	502				
2014	Sunday, September 14, 2014	103	137	116	356				
2014	Monday, September 15, 2014	38	89	131	258				
2014	Tuesday, September 16, 2014	43	110	158	311				
2014	Wednesday, September 17, 2014	100	199	192	491				
2014	Thursday, September 18, 2014	115	215	206	536				
2014	Friday, September 19, 2014	159	303	188	650				
2014	Saturday, September 20, 2014	200	378	178	756				
2014	Sunday, September 21, 2014	130	269	141	540				
2014	Monday, September 22, 2014	89	188	158	435				
2014	Tuesday, September 23, 2014	76	158	165	399				
2014	Wednesday, September 24, 2014	56	159	175	390				
2014	Thursday, September 25, 2014	62	241	175	478				
2014	Friday, September 26, 2014	144	319	169	632				
2014	Saturday, September 27, 2014	163	303	156	622				

Hollywood Diplomat Resort and Spa  
 Parking Utilization Study - Support Documentation

Year	Date	Self Parked Totals	Valet Parked Totals	Employee Parking	Total	Holidays/Event	Hotel Event Banquet Covers	Local/Social Event Catering Covers	Total People
2014	Sunday, September 28, 2014	171	196	132	499				
2014	Monday, September 29, 2014	147	173	189	509				
2014	Tuesday, September 30, 2014	107	148	201	456				
2014	Wednesday, October 01, 2014	48	83	191	322				
2014	Thursday, October 02, 2014	50	61	163	274				
2014	Friday, October 03, 2014	90	124	136	350				
2014	Saturday, October 04, 2014	140	175	122	437				
2014	Sunday, October 05, 2014	94	146	121	361				
2014	Monday, October 06, 2014	222	249	156	627				
2014	Tuesday, October 07, 2014	320	311	190	821	Mike Ferry			
2014	Wednesday, October 08, 2014	64	585	203	852	Mike Ferry			
2014	Thursday, October 09, 2014	83	538	210	831	Mike Ferry			
2014	Friday, October 10, 2014	115	683	184	982	C/O Day fro Mike	2,575	120	2,695
2014	Saturday, October 11, 2014	242	383	143	768				
2014	Sunday, October 12, 2014	202	286	146	634				
2014	Monday, October 13, 2014	103	152	175	430	Columbus Day			
2014	Tuesday, October 14, 2014	77	111	182	370				
2014	Wednesday, October 15, 2014	86	140	191	417				
2014	Thursday, October 16, 2014	79	142	199	420				
2014	Friday, October 17, 2014	134	191	195	520				
2014	Saturday, October 18, 2014	169	216	168	553				
2014	Sunday, October 19, 2014	142	160	176	478				
2014	Monday, October 20, 2014	56	128	200	384				
2014	Tuesday, October 21, 2014	92	144	207	443				
2014	Wednesday, October 22, 2014	108	95	202	405				
2014	Thursday, October 23, 2014	90	158	191	439				
2014	Friday, October 24, 2014	122	333	213	668				
2014	Saturday, October 25, 2014	127	517	170	814				
2014	Sunday, October 26, 2014	112	208	157	477				
2014	Monday, October 27, 2014	125	218	198	541				
2014	Tuesday, October 28, 2014	139	204	213	556				
2014	Wednesday, October 29, 2014	153	243	203	599				
2014	Thursday, October 30, 2014	65	201	228	494				
2014	Friday, October 31, 2014	29	220	200	449	Halloween			
2014	Saturday, November 01, 2014	33	232	185	450				
2014	Sunday, November 02, 2014	23	205	138	366				
2014	Monday, November 03, 2014	37	138	183	358				
2014	Tuesday, November 04, 2014	76	175	213	464				
2014	Wednesday, November 05, 2014	102	175	207	484				
2014	Thursday, November 06, 2014	118	325	226	669				
2014	Friday, November 07, 2014	63	193	213	469				
2014	Saturday, November 08, 2014	58	237	184	479				
2014	Sunday, November 09, 2014	35	162	116	313				
2014	Monday, November 10, 2014	29	135	166	330				
2014	Tuesday, November 11, 2014	43	155	170	368	Veterans Day			
2014	Wednesday, November 12, 2014	68	241	187	496				
2014	Thursday, November 13, 2014	120	277	189	586				
2014	Friday, November 14, 2014	341	458	188	987	Yoga Journal	1,739	292	2,031
2014	Saturday, November 15, 2014	365	325	158	848				
2014	Sunday, November 16, 2014	339	317	127	783				
2014	Monday, November 17, 2014	69	186	172	427				
2014	Tuesday, November 18, 2014	11	192	206	409				
2014	Wednesday, November 19, 2014	7	217	226	450				
2014	Thursday, November 20, 2014	43	212	231	486				
2014	Friday, November 21, 2014	70	149	201	420				
2014	Saturday, November 22, 2014	46	156	125	327				
2014	Sunday, November 23, 2014	36	131	116	283				
2014	Monday, November 24, 2014	24	27	146	197				
2014	Tuesday, November 25, 2014	16	35	150	201				
2014	Wednesday, November 26, 2014	28	202	143	373				
2014	Thursday, November 27, 2014	47	213	313	573	Thanksgiving Day			
2014	Friday, November 28, 2014	-	251	293	544				
2014	Saturday, November 29, 2014	6	323	132	461				
2014	Sunday, November 30, 2014	-	153	103	256				
2014	Monday, December 01, 2014	39	157	238	434				
2014	Tuesday, December 02, 2014	26	190	283	499				
2014	Wednesday, December 03, 2014	48	196	256	500				
2014	Thursday, December 04, 2014	43	250	272	565				
2014	Friday, December 05, 2014	484	242	191	917				
2014	Saturday, December 06, 2014	195	458	223	876				
2014	Sunday, December 07, 2014	77	118	103	298				
2014	Monday, December 08, 2014	120	143	118	381				
2014	Tuesday, December 09, 2014	104	110	162	376				
2014	Wednesday, December 10, 2014	115	119	153	387				



Hollywood Diplomat Resort and Spa  
 Parking Utilization Study - Support Documentation

Year	Date	Self Parked Totals	Valet Parked Totals	Employee Parking	Total	Holidays/Event	Hotel Event Banquet Covers	Local/Social Event Catering Covers	Total People
2014	Thursday, December 11, 2014	371	151	144	666				
2014	Friday, December 12, 2014	511	286	157	954				
2014	Saturday, December 13, 2014	410	845	162	1,417	Zero to Three Group	50	5,180	5,230
2014	Sunday, December 14, 2014	156	160	79	395				
2014	Monday, December 15, 2014	22	154	130	306				
2014	Tuesday, December 16, 2014	105	104	142	351				
2014	Wednesday, December 17, 2014	126	133	85	344				
2014	Thursday, December 18, 2014	265	126	130	521				
2014	Friday, December 19, 2014	178	99	98	375				
2014	Saturday, December 20, 2014	409	305	145	859				
2014	Sunday, December 21, 2014	128	161	90	379				
2014	Monday, December 22, 2014	145	147	112	404				
2014	Tuesday, December 23, 2014	148	151	115	414				
2014	Wednesday, December 24, 2014	116	192	119	427	Christmas Eve			
2014	Thursday, December 25, 2014	170	269	108	547	Christmas			
2014	Friday, December 26, 2014	119	297	128	544				
2014	Saturday, December 27, 2014	204	383	150	737				
2014	Sunday, December 28, 2014	209	358	134	701				
2014	Monday, December 29, 2014	394	346	179	919				
2014	Tuesday, December 30, 2014	330	333	222	885				
2014	Wednesday, December 31, 2014	381	350	207	938	New Years Eve			
2015	Thursday, January 01, 2015	129	367	169	665	New Years			
2015	Friday, January 02, 2015	116	270	171	557				
2015	Saturday, January 03, 2015	197	224	140	561				
2015	Sunday, January 04, 2015	209	188	99	496				
2015	Monday, January 05, 2015	172	148	158	478				
2015	Tuesday, January 06, 2015	150	183	189	522				
2015	Wednesday, January 07, 2015	296	251	193	740				
2015	Thursday, January 08, 2015	338	286	226	850				
2015	Friday, January 09, 2015	379	322	208	909				
2015	Saturday, January 10, 2015	226	179	151	556				
2015	Sunday, January 11, 2015	163	101	111	375				
2015	Monday, January 12, 2015	247	153	209	609				
2015	Tuesday, January 13, 2015	133	166	217	516				
2015	Wednesday, January 14, 2015	114	162	218	494				
2015	Thursday, January 15, 2015	345	515	233	1,093	American Icon	3,699	877	4,576
2015	Friday, January 16, 2015	74	260	236	570				
2015	Saturday, January 17, 2015	82	296	150	528				
2015	Sunday, January 18, 2015	103	255	148	506				
2015	Monday, January 19, 2015	96	298	215	609	Martin Luther King Day			
2015	Tuesday, January 20, 2015	123	216	243	582				
2015	Wednesday, January 21, 2015	160	189	242	591				
2015	Thursday, January 22, 2015	223	212	242	677				
2015	Friday, January 23, 2015	169	213	222	604				
2015	Saturday, January 24, 2015	144	178	161	483				
2015	Sunday, January 25, 2015	145	370	180	695				
2015	Monday, January 26, 2015	294	460	270	1,024	Index	8,215		8,215
2015	Tuesday, January 27, 2015	392	395	327	1,114	Index	7,969		7,969
2015	Wednesday, January 28, 2015	456	372	210	1,038	Index	2,644		2,644
2015	Thursday, January 29, 2015	346	474	210	1,030	ISET/Florida	2,383		2,383
2015	Friday, January 30, 2015	315	332	159	806	ISET/Florida			
2015	Saturday, January 31, 2015	321	381	179	881	ISET/Florida			
2015	Sunday, February 01, 2015	276	345	120	740				
2015	Monday, February 02, 2015	258	352	207	817				
2015	Tuesday, February 03, 2015	266	366	215	847				
2015	Wednesday, February 04, 2015	275	338	233	847				
2015	Thursday, February 05, 2015	173	346	211	730				
2015	Friday, February 06, 2015	170	201	234	605				
2015	Saturday, February 07, 2015	156	165	166	487				
2015	Sunday, February 08, 2015	127	164	143	434				
2015	Monday, February 09, 2015	234	225	209	668				
2015	Tuesday, February 10, 2015	243	209	237	689				
2015	Wednesday, February 11, 2015	179	262	198	639				
2015	Thursday, February 12, 2015	161	533	208	902				
2015	Friday, February 13, 2015	195	648	219	1,062				
2015	Saturday, February 14, 2015	200	667	147	1,014	Valentines Day			
2015	Sunday, February 15, 2015	241	386	134	761				
2015	Monday, February 16, 2015	253	369	201	823	President's Day			
2015	Tuesday, February 17, 2015	259	347	197	803				
2015	Wednesday, February 18, 2015	219	311	219	749				
2015	Thursday, February 19, 2015	216	320	207	743				
2015	Friday, February 20, 2015	210	347	198	755				
2015	Saturday, February 21, 2015	220	344	109	673				
2015	Sunday, February 22, 2015	164	220	174	558				

Hollywood Diplomat Resort and Spa  
 Parking Utilization Study - Support Documentation

Year	Date	Self Parked Totals	Valet Parked Totals	Employee Parking	Total	Holidays/Event	Hotel Event Banquet Covers	Local/Social Event Catering Covers	Total People
2015	Monday, February 23, 2015	158	220	246	624				
2015	Tuesday, February 24, 2015	155	189	240	584				
2015	Wednesday, February 25, 2015	194	207	244	645				
2015	Thursday, February 26, 2015	214	778	241	1,233	Friends of the IDF	1,393	2,070	3,463
2015	Friday, February 27, 2015	371	426	218	1,015	Master Halco			
2015	Saturday, February 28, 2015	115	272	398	785				
2015	Sunday, March 01, 2015	217	250	230	697				
2015	Monday, March 02, 2015	157	201	269	627				
2015	Tuesday, March 03, 2015	196	194	254	644				
2015	Wednesday, March 04, 2015	228	243	218	689				
2015	Thursday, March 05, 2015	208	292	225	725				
2015	Friday, March 06, 2015	216	338	189	743				
2015	Saturday, March 07, 2015	208	450	112	770				
2015	Sunday, March 08, 2015	239	247	106	592				
2015	Monday, March 09, 2015	424	723	259	1,406	FSR & Memorial			
2015	Tuesday, March 10, 2015	335	545	205	1,085	Wizo			
2015	Wednesday, March 11, 2015	226	316	202	745				
2015	Thursday, March 12, 2015	303	240	252	795				
2015	Friday, March 13, 2015	320	334	236	890				
2015	Saturday, March 14, 2015	394	452	188	1,034	NCCN			
2015	Sunday, March 15, 2015	393	318	390	1,101	Anti-Money			
2015	Monday, March 16, 2015	559	432	473	1,463	Anti-Money	4,733		4,733
2015	Tuesday, March 17, 2015	541	342	460	1,344	Anti-Money	4,432		4,432
2015	Wednesday, March 18, 2015	368	273	255	896				
2015	Thursday, March 19, 2015	163	230	356	749				
2015	Friday, March 20, 2015	126	216	486	828				
2015	Saturday, March 21, 2015	185	234	440	859				
2015	Sunday, March 22, 2015	229	217	430	876				
2015	Monday, March 23, 2015	113	212	541	866				
2015	Tuesday, March 24, 2015	177	353	484	1,014	No records found			
2015	Wednesday, March 25, 2015	196	266	484	946				
2015	Thursday, March 26, 2015	117	243	471	831				
2015	Friday, March 27, 2015	347	380	456	1,183	Publix			
2015	Saturday, March 28, 2015	285	399	357	1,041				
2015	Sunday, March 29, 2015	257	277	356	890				
2015	Monday, March 30, 2015	177	288	450	915				
2015	Tuesday, March 31, 2015	130	273	472	875				
2015	Wednesday, April 01, 2015	250	350	444	1,044				
2015	Thursday, April 02, 2015	275	402	417	1,094				
2015	Friday, April 03, 2015	324	416	409	1,149				
2015	Saturday, April 04, 2015	377	466	353	1,196				
2015	Sunday, April 05, 2015	360	406	314	1,080	Easter Sunday			
2015	Monday, April 06, 2015	298	377	382	1,057				
2015	Tuesday, April 07, 2015	293	382	387	1,062				
2015	Wednesday, April 08, 2015	376	550	435	1,361	FRLA Gala	108	511	619
2015	Thursday, April 09, 2015	262	448	439	1,149				
2015	Friday, April 10, 2015	288	362	444	1,094				
2015	Saturday, April 11, 2015	285	360	359	1,004				
2015	Sunday, April 12, 2015	306	271	360	937				
2015	Monday, April 13, 2015	234	177	421	832				
2015	Tuesday, April 14, 2015	257	188	465	910				
2015	Wednesday, April 15, 2015	264	180	472	916				
2015	Thursday, April 16, 2015	282	188	444	914				
2015	Friday, April 17, 2015	335	182	349	866				
2015	Saturday, April 18, 2015	360	332	360	1,052				
2015	Sunday, April 19, 2015	236	156	421	813				
2015	Monday, April 20, 2015	99	124	466	689				
2015	Tuesday, April 21, 2015	62	104	472	638				
2015	Wednesday, April 22, 2015	86	106	444	636				
2015	Thursday, April 23, 2015	109	118	395	622				
2015	Friday, April 24, 2015	175	293	222	690				
2015	Saturday, April 25, 2015	273	395	189	857				
2015	Sunday, April 26, 2015	302	273	169	744				
2015	Monday, April 27, 2015	343	334	276	953				
2015	Tuesday, April 28, 2015	659	428	277	1,364	PCIAA	3,091	30	3,121
2015	Wednesday, April 29, 2015	598	434	399	1,431	PCIAA	4,199	12	4,211
2015	Thursday, April 30, 2015	207	243	453	903				
2015	Friday, May 01, 2015	423	323	332	1,078				
2015	Saturday, May 02, 2015	591	812	335	1,738	Segadores & Legacy	2,107	1,618	3,725
2015	Sunday, May 03, 2015	374	317	425	1,116	NISH			
2015	Monday, May 04, 2015	234	187	489	910				
2015	Tuesday, May 05, 2015	190	161	468	819				
2015	Wednesday, May 06, 2015	184	144	439	767				
2015	Thursday, May 07, 2015	434	534	392	1,360				

Hollywood Diplomat Resort and Spa  
 Parking Utilization Study - Support Documentation

Year	Date	Self Parked Totals	Valet Parked Totals	Employee Parking	Total	Holidays/Event	Hotel Event Banquet Covers	Local/Social Event Catering Covers	Total People
2015	Friday, May 08, 2015	326	499	292	1,117				
2015	Saturday, May 09, 2015	578	740	318	1,636	Anti-Aging Alrea	2,770		2,770
2015	Sunday, May 10, 2015	374	406	464	1,244	Mother's Day			
2015	Monday, May 11, 2015	157	136	436	729				
2015	Tuesday, May 12, 2015	167	147	459	773				
2015	Wednesday, May 13, 2015	222	288	457	967				
2015	Thursday, May 14, 2015	203	160	447	810				
2015	Friday, May 15, 2015	195	176	344	715				
2015	Saturday, May 16, 2015	202	192	321	715				
2015	Sunday, May 17, 2015	146	123	328	597				
2015	Monday, May 18, 2015	108	90	318	516				
2015	Tuesday, May 19, 2015	100	109	382	591				
2015	Wednesday, May 20, 2015	142	153	419	714				
2015	Thursday, May 21, 2015	233	155	461	849				
2015	Friday, May 22, 2015	338	295	409	1,042				
2015	Saturday, May 23, 2015	427	592	386	1,405				
2015	Sunday, May 24, 2015	538	541	470	1,549	Holiday & Weddings	1,100	600	1,700
2015	Monday, May 25, 2015	298	265	540	1,103	Memorial Day			
2015	Tuesday, May 26, 2015	175	134	509	818				
2015	Wednesday, May 27, 2015	276	275	545	1,096				
2015	Thursday, May 28, 2015	324	331	529	1,184				
2015	Friday, May 29, 2015	354	325	459	1,138				
2015	Saturday, May 30, 2015	399	336	371	1,106				
2015	Sunday, May 31, 2015	223	210	313	746				
2015	Monday, June 01, 2015	81	95	320	496				
2015	Tuesday, June 02, 2015	91	98	398	587				
2015	Wednesday, June 03, 2015	85	103	467	655				
2015	Thursday, June 04, 2015	173	220	498	891				
2015	Friday, June 05, 2015	218	340	390	948				
2015	Saturday, June 06, 2015	355	466	235	1,056				
2015	Sunday, June 07, 2015	240	266	302	808				
2015	Monday, June 08, 2015	133	204	278	615				
2015	Tuesday, June 09, 2015	121	184	275	580				
2015	Wednesday, June 10, 2015	122	158	302	582				
2015	Thursday, June 11, 2015	122	185	298	605				
2015	Friday, June 12, 2015	263	376	220	859				
2015	Saturday, June 13, 2015	545	749	278	1,572	Florida Gov	830	1,365	2,195
2015	Sunday, June 14, 2015	668	466	396	1,530	Florida Gov	1,030	1,030	2,060
2015	Monday, June 15, 2015	366	417	298	1,081	Florida Gov			
2015	Tuesday, June 16, 2015	663	286	484	1,433	Florida Gov	3,146	32	3,178
2015	Wednesday, June 17, 2015	265	148	467	880				
2015	Thursday, June 18, 2015	123	161	434	718				
2015	Friday, June 19, 2015	205	355	355	915				
2015	Saturday, June 20, 2015	263	386	374	1,023				
2015	Sunday, June 21, 2015	153	200	233	586	Father's Day			
2015	Monday, June 22, 2015	281	163	440	884				
2015	Tuesday, June 23, 2015	347	178	480	1,005	Oracle Development	1,311		1,311
2015	Wednesday, June 24, 2015	295	164	343	802	Oracle Development	1,311		1,311
2015	Thursday, June 25, 2015	291	260	355	906				
2015	Friday, June 26, 2015	341	477	301	1,119				
2015	Saturday, June 27, 2015	272	551	286	1,109				
2015	Sunday, June 28, 2015	147	292	380	819				
2015	Monday, June 29, 2015	226	284	449	959				
2015	Tuesday, June 30, 2015	257	337	453	1,047				
2015	Wednesday, July 01, 2015	194	212	451	857				
2015	Thursday, July 02, 2015	220	282	352	854				
2015	Friday, July 03, 2015	347	488	316	1,151	American Dance	145		145
2015	Saturday, July 04, 2015	489	465	213	1,167	Independence Day			
2015	Sunday, July 05, 2015	312	252	413	977				
2015	Monday, July 06, 2015	251	187	426	864				
2015	Tuesday, July 07, 2015	241	195	374	810				
2015	Wednesday, July 08, 2015	264	210	233	707				
2015	Thursday, July 09, 2015	270	222	440	932				
2015	Friday, July 10, 2015	307	315	480	1,102	American Dance	153		153
2015	Saturday, July 11, 2015	339	444	343	1,126	American Dance	479	88	567
2015	Sunday, July 12, 2015	205	230	355	790				
2015	Monday, July 13, 2015	136	150	301	587				
2015	Tuesday, July 14, 2015	116	142	286	544				
2015	Wednesday, July 15, 2015	131	126	380	637				
2015	Thursday, July 16, 2015	162	183	374	719				
2015	Friday, July 17, 2015	244	351	233	828				
2015	Saturday, July 18, 2015	285	384	440	1,109	Traci Lynn Group	2,506		2,506
2015	Sunday, July 19, 2015	242	235	480	957				