



Broward County Radio System



Twenty-nine (29) Municipalities and the Broward Municipal Services District are hosted on the Broward County Radio System

FLOW OF A 911 CALL

BROWARD COUNTY REGIONAL DISPATCH SYSTEM

29 MUNICIPALITIES AND THE BROWARD MUNICIPAL SERVICES DISTRICT



Caller calls 911; the call is answered by a call taker at one of the three Public Safety Answering Points (PSAP)

Using the computer-aided (CAD) system, call taker asks the caller questions about the nature of the emergency

Dispatcher uses CAD to assign unit(s) for emergency response, then contacts the responder via radio

Emergency responder is dispatched and goes en route

Emergency responder arrives at the scene



Public Safety Radio Equipment Locations

Broward County Hollywood West Lake Park Site

Broward County Water and Waste Water Site



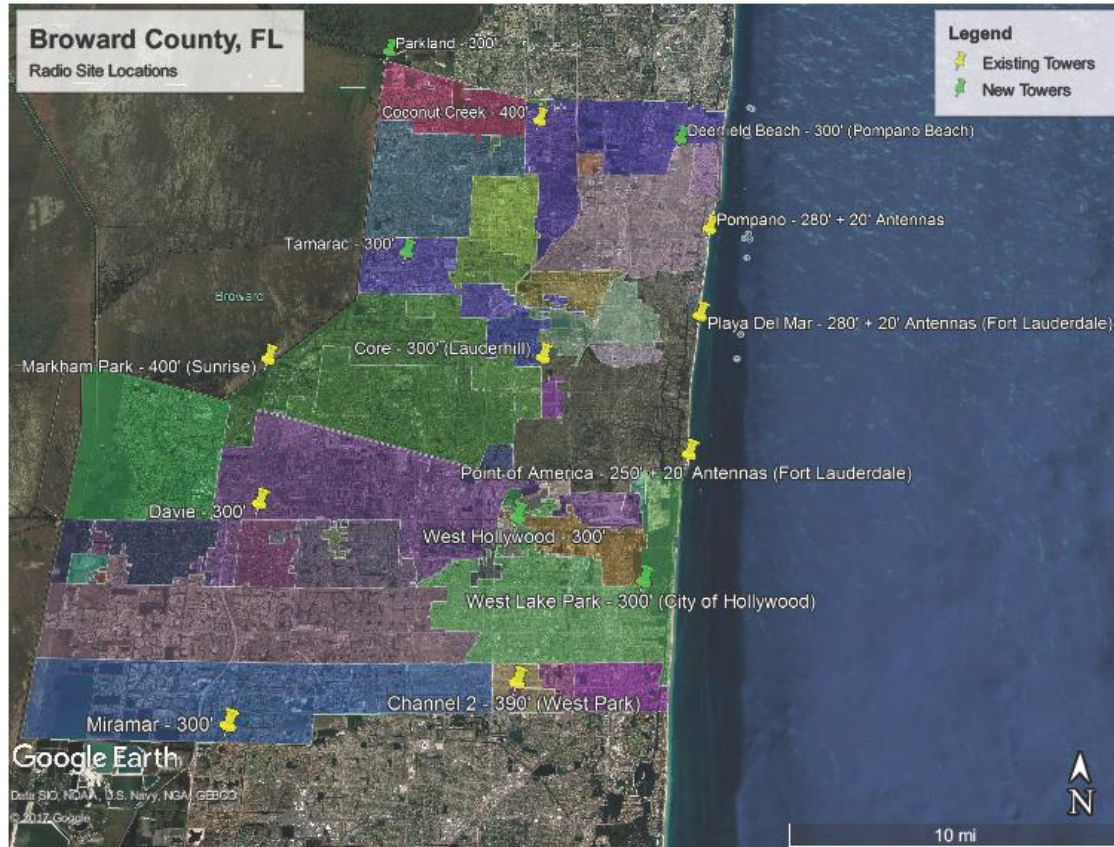
Public Safety Radio Towers

- The P25 Radio System will require 2 locations in Hollywood:
 - West Lake Park, and the Water and Waste Water plant
- Both towers are needed:
 - **To properly cover emergency first responders in the City of Hollywood**
 - To eliminate current dead spots along the oceanfront, high rise buildings and western parts of the County.
- Towers will also provide space for City's Public Safety Equipment
- 300 ft high towers are required for optimal Regional system performance for Hollywood and surrounding users
 - Top mounted candelabra for multiple antennas
 - 325 ft total height with antennas
 - Lattice self supporting tower (no guy wires)
 - Equipment shelter at tower base

Public Safety Communication Consultants



Tower Site Locations



Public Safety Communication Consultants



Tower Requirements

- Must be high enough to properly cover Hollywood and the neighboring jurisdictions
- Must be tall enough to accommodate the required number of antennas
 - 6 radio system antennas
 - 2 microwave dish antennas
- Must be tall enough to provide radio signal into buildings (e.g. schools, stores and high rises)
- Must be tall enough to cover areas otherwise blocked by buildings



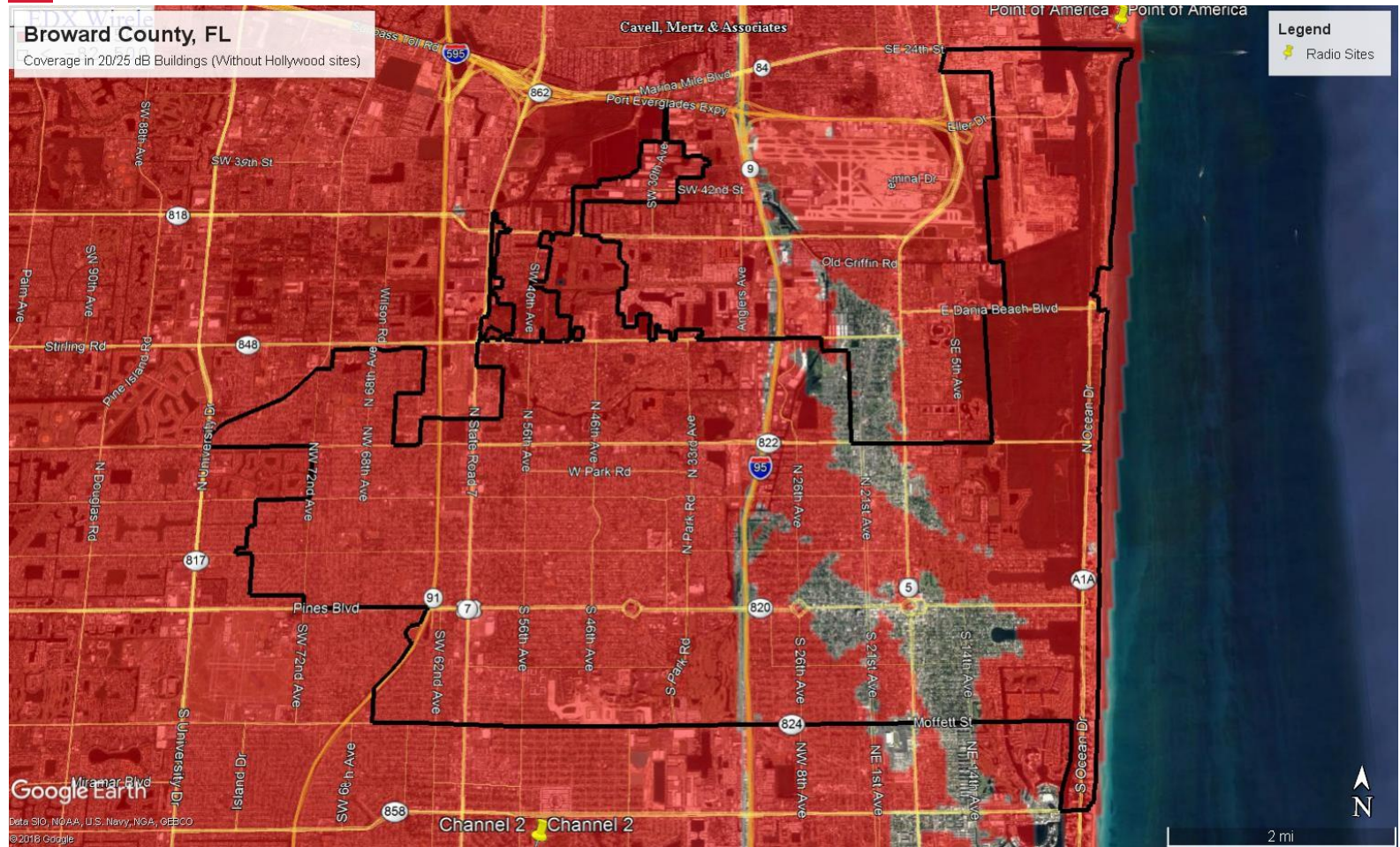
Benefits of New Tower in Hollywood

- **Significantly improves radio coverage gaps**
- Improved coverage for the entire system
- Increased room for additional public safety radio emergency services (i.e. FirstNet)
- Improved overlapping coverage with surrounding sites, providing improved performance in the event of system interruptions
- Increased additional view of area from obstructions

Public Safety Communication Consultants

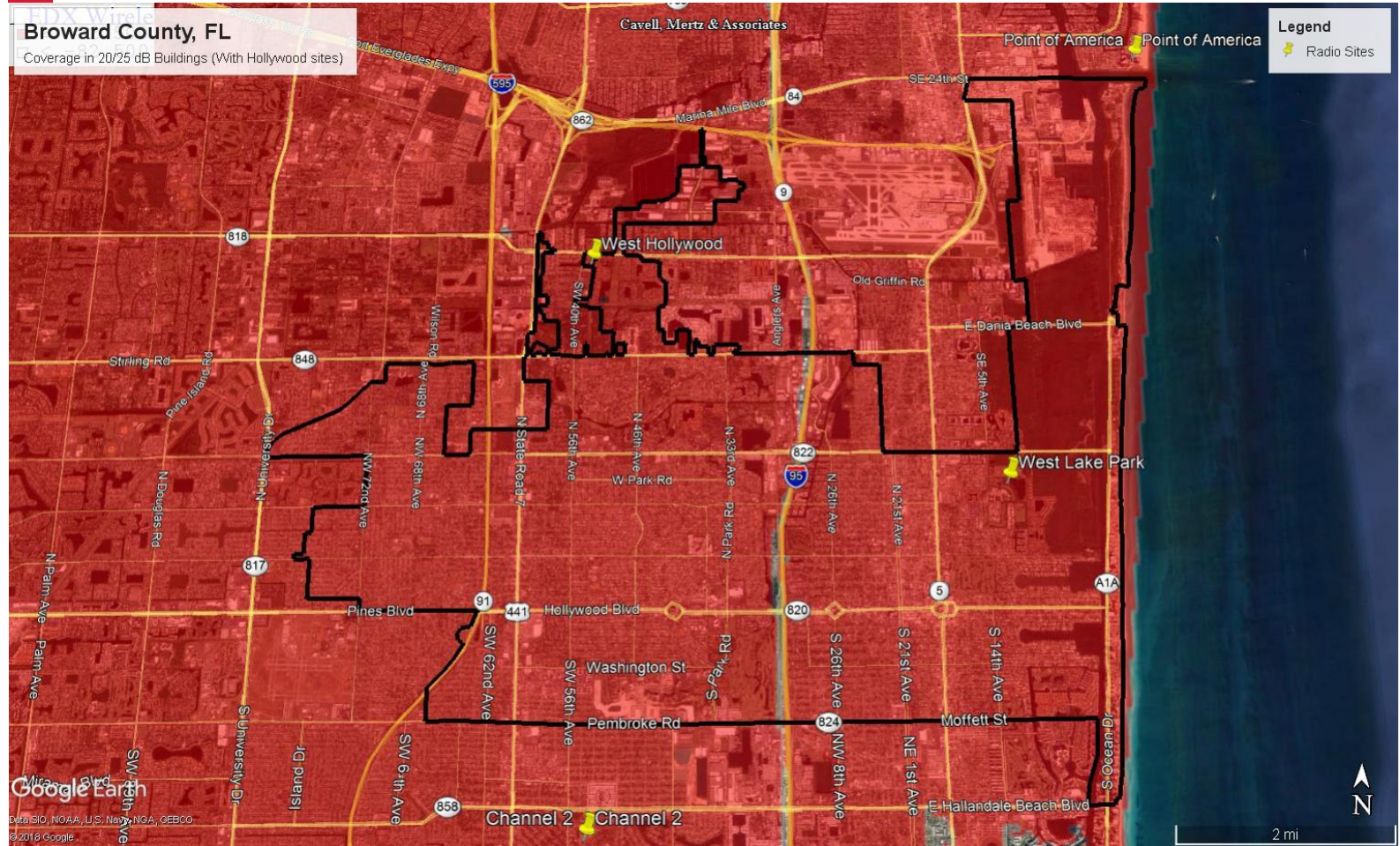


Coverage without Hollywood Sites





Coverage with Hollywood Sites





West Lake Park Site Location



Public Safety Communication Consultants

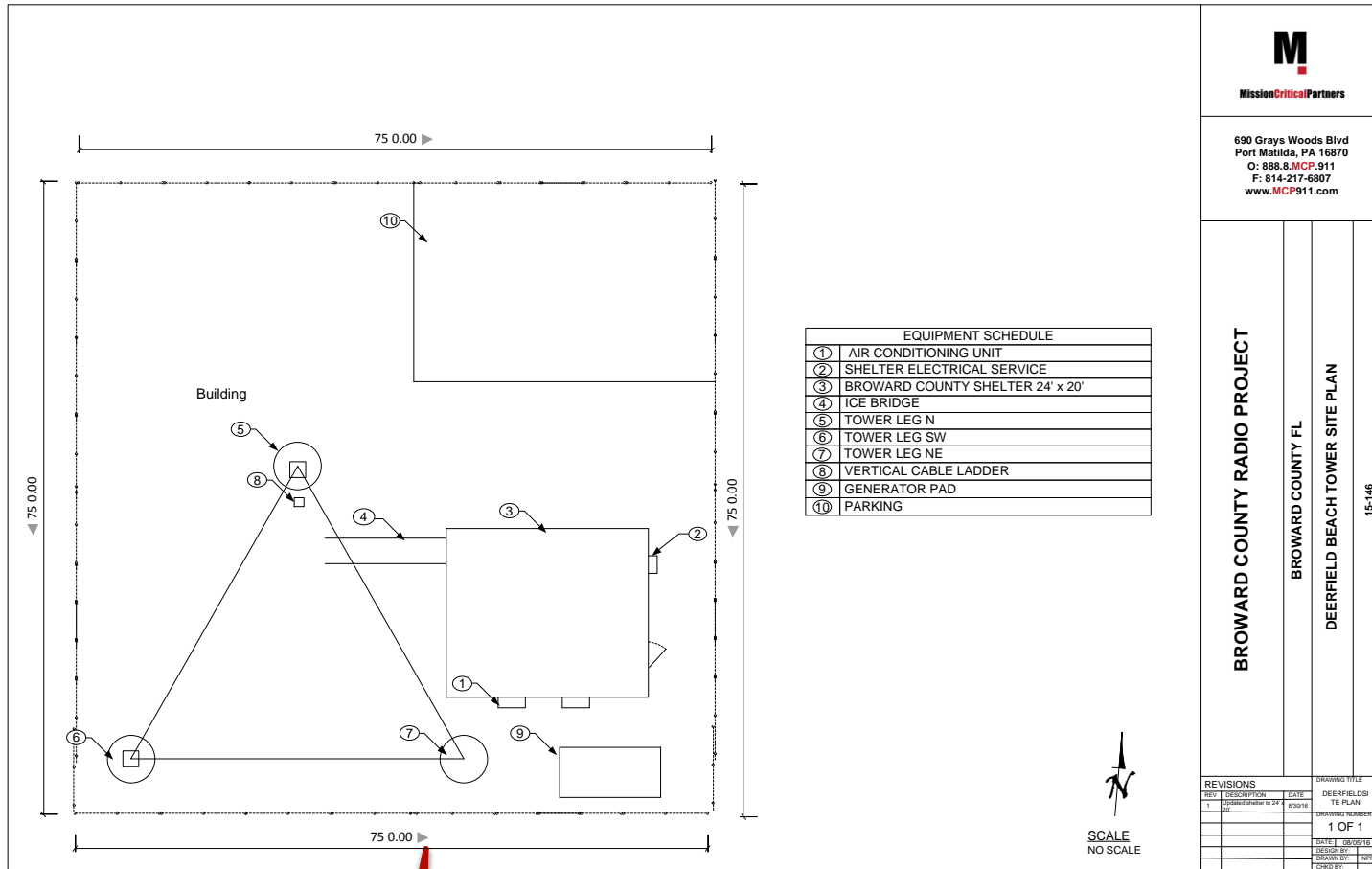


Tower Site Details

- 75' x 75' Fenced Compound
- 300 ft Self-Supporting Tower
- 32' x 24 ' Prefabricated Shelter
- Generator
- Parking Area
- Compound Totally Fenced
- Pervious Stone and Weed Barrier



Site Layout



MissionCriticalPartners

690 Grays Woods Blvd
Port Matilda, PA 16870
O: 888.8.MCP.911
F: 814-217-6807
www.MCP911.com

BROWARD COUNTY RADIO PROJECT

BROWARD COUNTY FL

DEERFIELD BEACH TOWER SITE PLAN

15-146

REVISIONS			DRAWING TITLE	
REV	DESCRIPTION	DATE	DEERFIELD SITE PLAN	
1	Issued under 24	8/30/16	DRAWING NUMBER	
			1 OF 1	
			DATE	OBJECTS
			DESIGN BY	DATE
			CHECK BY	DATE

Public Safety Communication Consultants



Typical Tower



Public Safety Communication Consultants



West Lake Tower Rendering View From Restroom Inside Park



Public Safety Communication Consultants



West Lake Tower Rendering View From Coolidge Street

West Lake Park

From Coolidge St and N 14 Av

Legend



Google earth

Public Safety Communication Consultants

Your Life Safety Mission Is Our Passion

16 **MCP911.com**



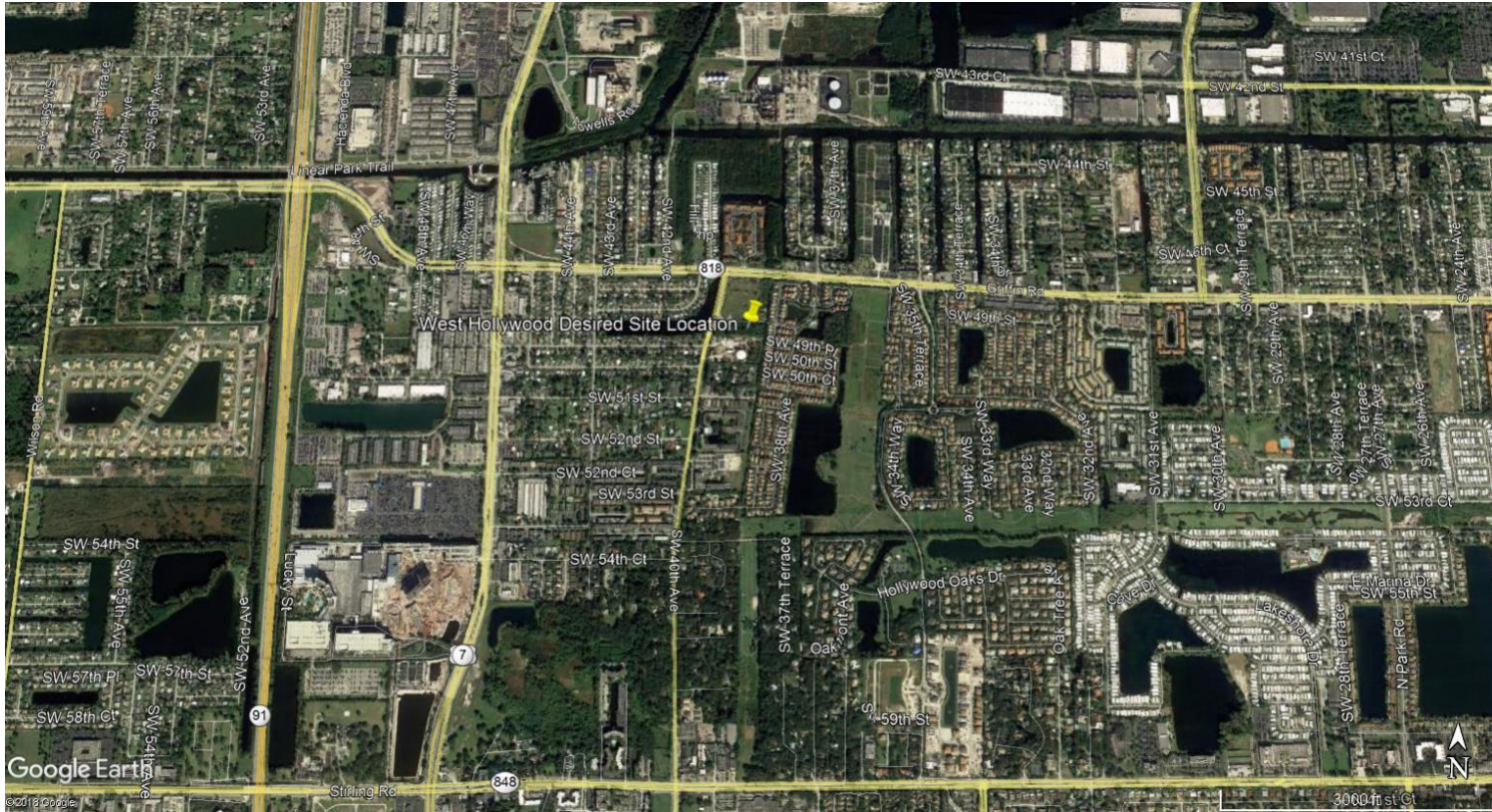
West Lake Tower Rendering View From Homes on East Side of the Lake



Public Safety Communication Consultants



Waste Water Plant Site Location



Public Safety Communication Consultants



Waste Water Tower from Homes to the East



on Consultants



Questions & Discussion

Public Safety Communication Consultants