

**ATTACHMENT II**  
Supplemental Application Package



# Broward County Radio System



**Twenty-nine (29) Municipalities and the Broward Municipal Services District are hosted on the Broward County Radio System**



# FLOW OF A 911 CALL

## BROWARD COUNTY REGIONAL DISPATCH SYSTEM

## 29 MUNICIPALITIES AND THE BROWARD MUNICIPAL SERVICES DISTRICT



Caller calls 911; the call is answered by a call taker at one of the three Public Safety Answering Points (PSAP)

Using the computer-aided (CAD) system, call taker asks the caller questions about the nature of the emergency

Dispatcher uses CAD to assign unit(s) for emergency response, then contacts the responder via radio

Emergency responder is dispatched and goes en route

Emergency responder arrives at the scene



# **Public Safety Radio Equipment Locations**

Broward County Hollywood West Lake Park Site

Broward County Water and Waste Water Site

---



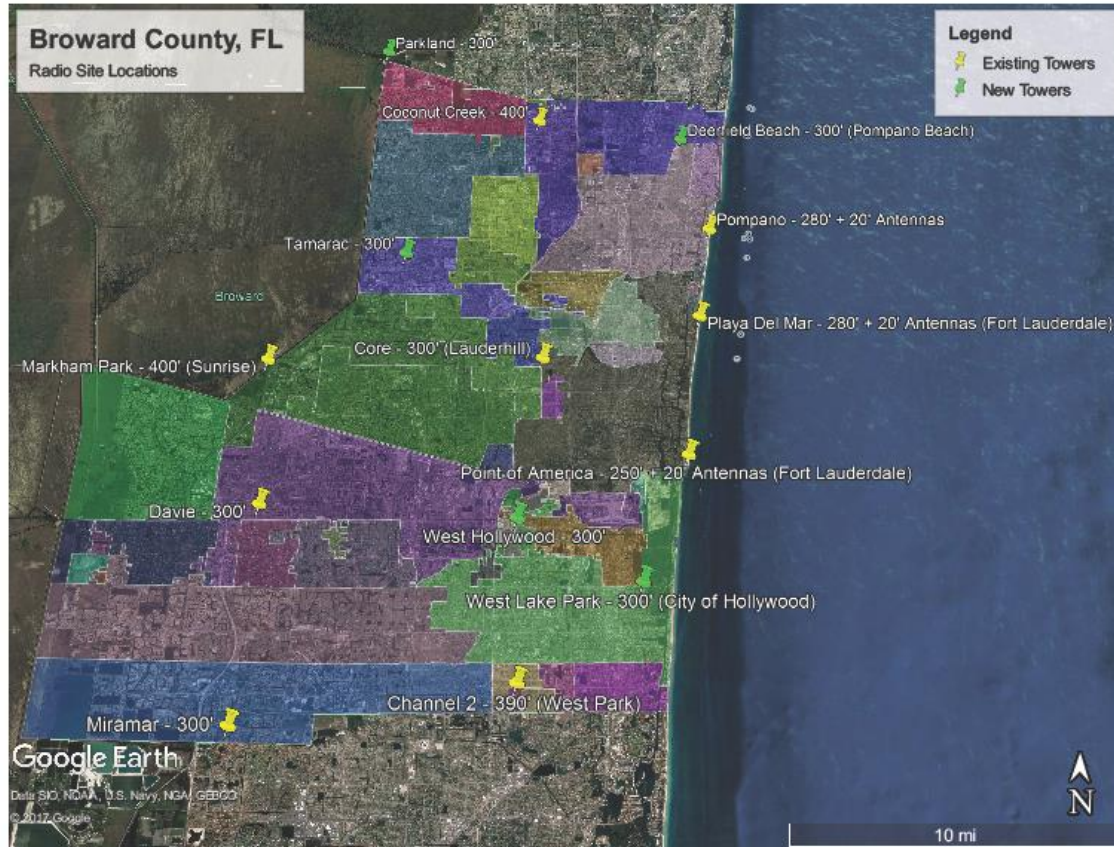
# Public Safety Radio Towers

- The P25 Radio System will require 2 locations in Hollywood:
  - West Lake Park, and the Water and Waste Water plant
- Both towers are needed:
  - **To properly cover emergency first responders in the City of Hollywood**
  - To eliminate current dead spots along the oceanfront, high rise buildings and western parts of the County.
- Towers will also provide space for City's Public Safety Equipment
- 300 ft high towers are required for optimal Regional system performance for Hollywood and surrounding users
  - Top mounted candelabra for multiple antennas
  - 325 ft total height with antennas
  - Lattice self supporting tower (no guy wires)
  - Equipment shelter at tower base

*Public Safety Communication Consultants*



# Tower Site Locations



Public Safety Communication Consultants



# Tower Requirements

- Must be high enough to properly cover Hollywood and the neighboring jurisdictions
- Must be tall enough to accommodate the required number of antennas
  - 6 radio system antennas
  - 2 microwave dish antennas
- Must be tall enough to provide radio signal into buildings (e.g. schools, stores and high rises)
- Must be tall enough to cover areas otherwise blocked by buildings





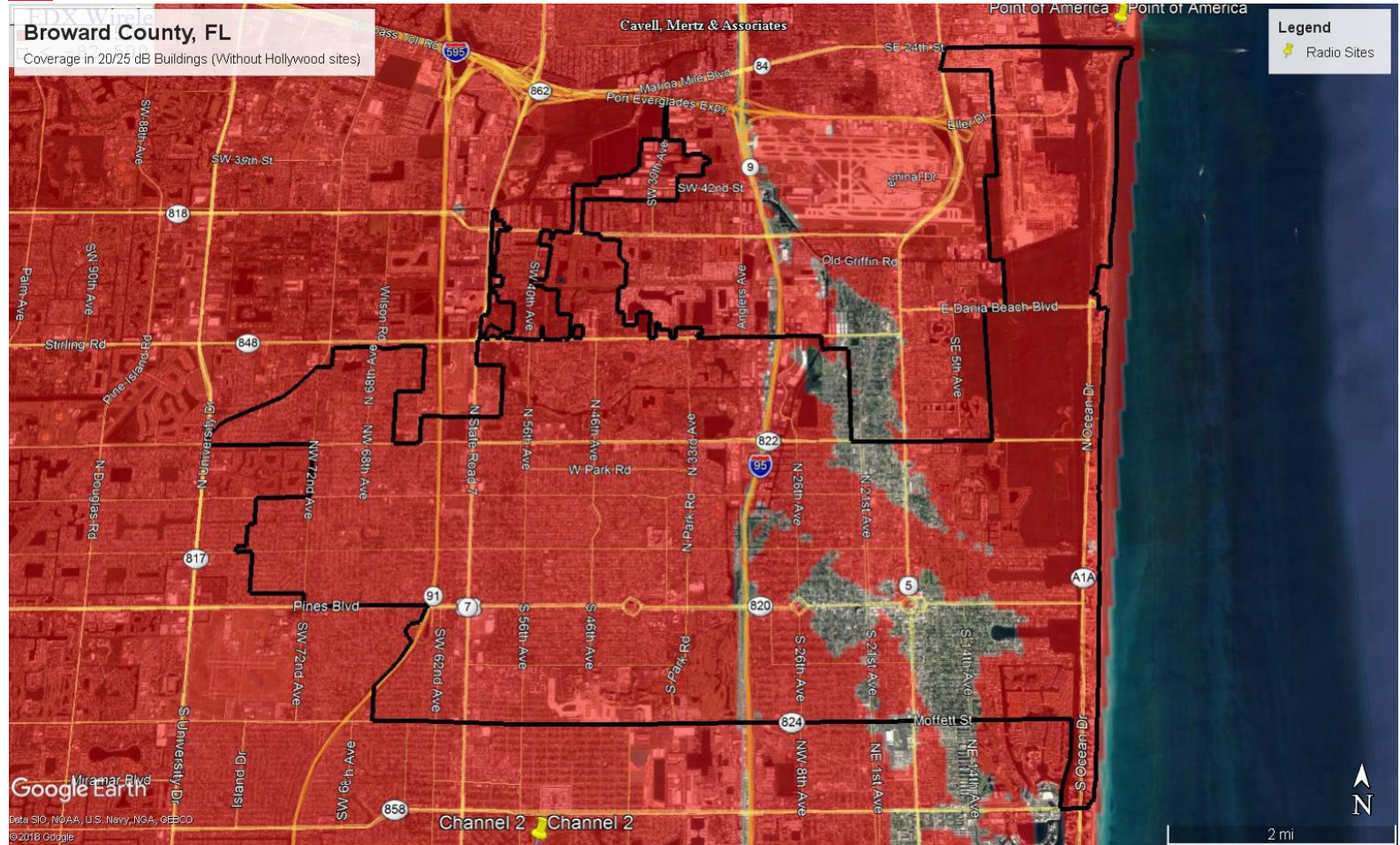
# Benefits of New Tower in Hollywood

- **Significantly improves radio coverage gaps**
- Improved coverage for the entire system
- Increased room for additional public safety radio emergency services (i.e. FirstNet)
- Improved overlapping coverage with surrounding sites, providing improved performance in the event of system interruptions
- Increased additional view of area from obstructions

*Public Safety Communication Consultants*



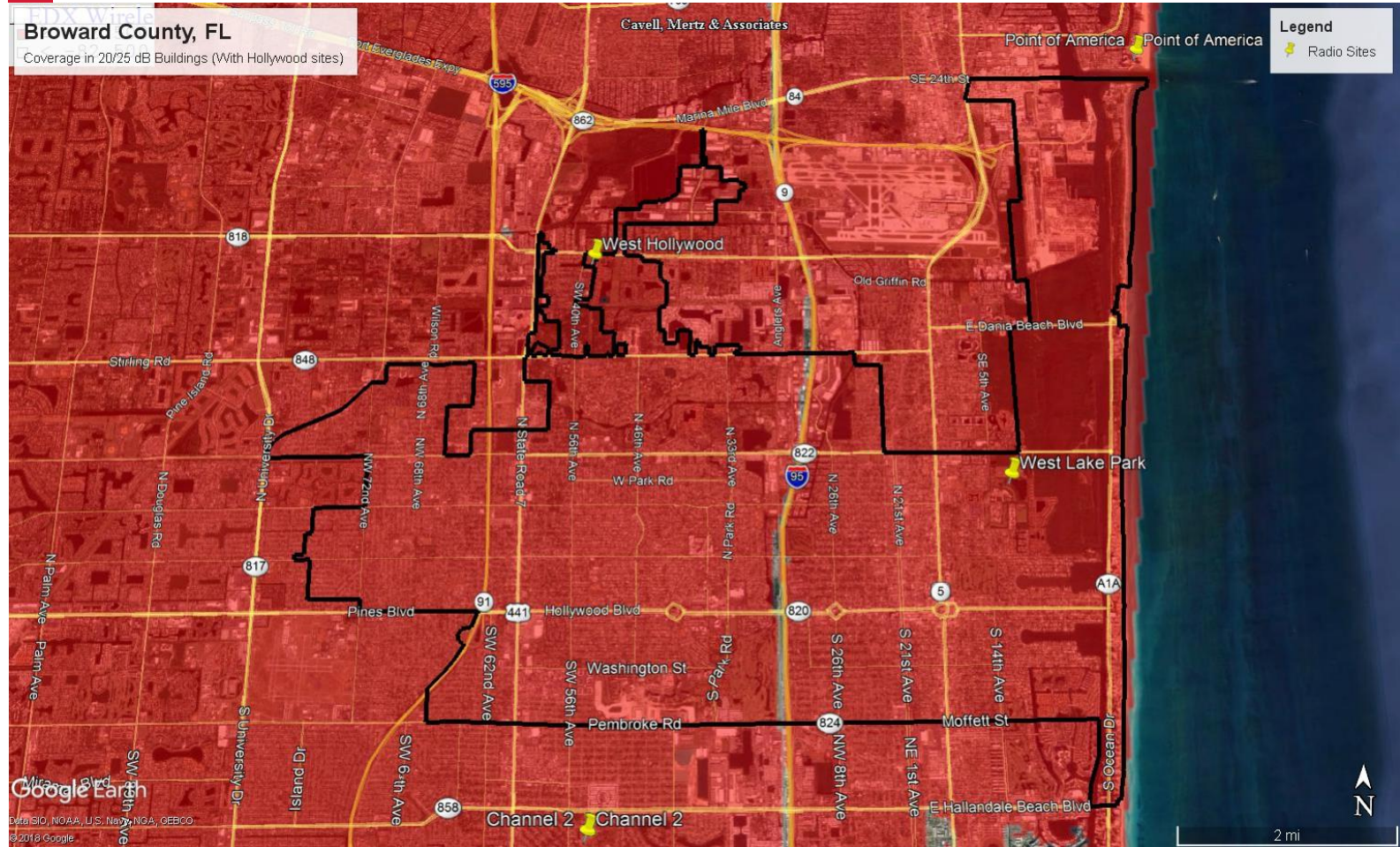
# Coverage without Hollywood Sites







# Coverage with Hollywood Sites



Public Safety Communication Consultants





# West Lake Park Site Location



Public Safety Communication Consultants





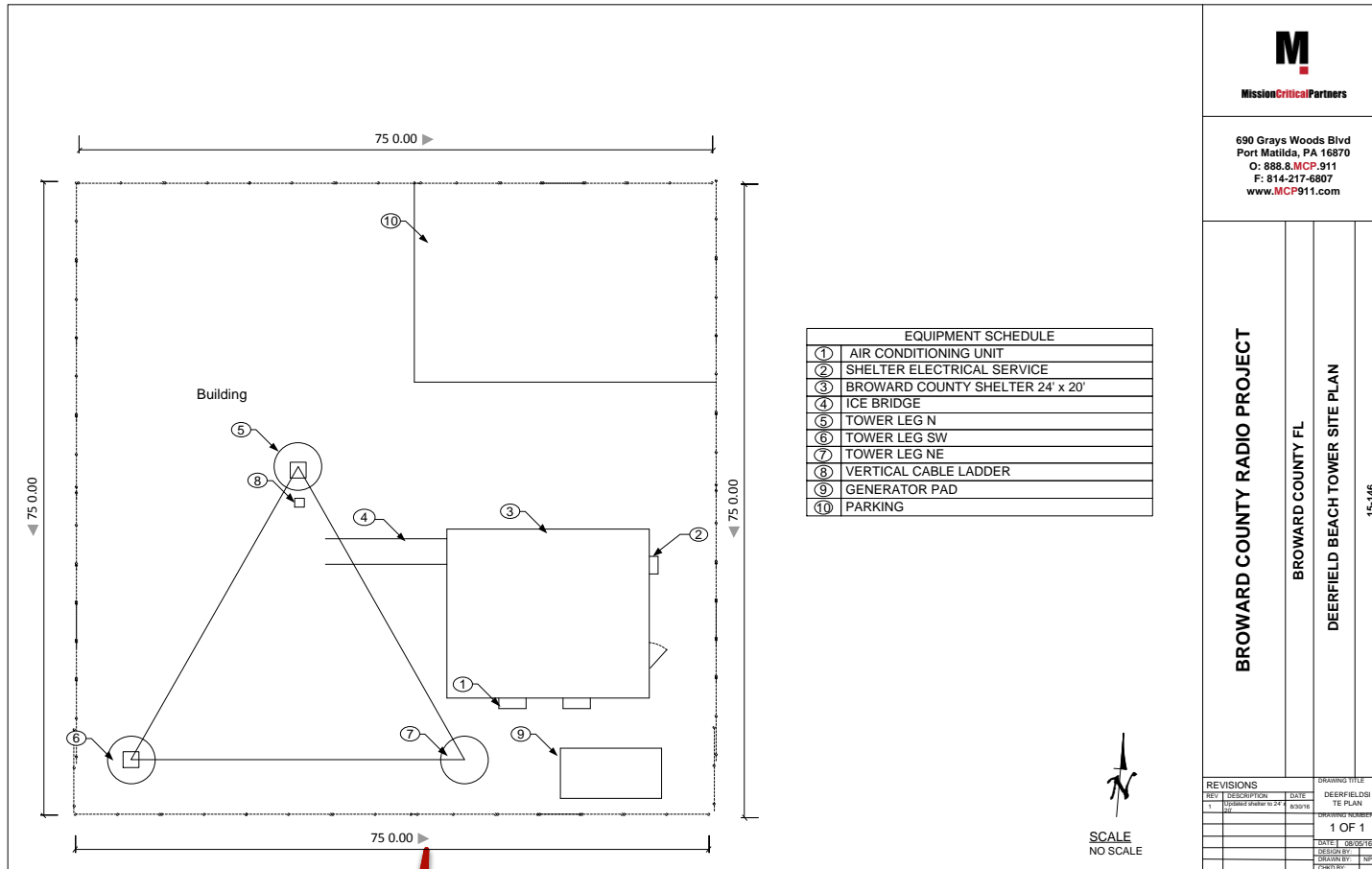
# Tower Site Details

- 75' x 75' Fenced Compound
- 300 ft Self-Supporting Tower
- 32' x 24 ' Prefabricated Shelter
- Generator
- Parking Area
- Compound Totally Fenced
- Pervious Stone and Weed Barrier

*Public Safety Communication Consultants*



# Site Layout



690 Grays Woods Blvd  
Port Matilda, PA 16870  
O: 888.8.MCP.911  
F: 814-217-6807  
www.MCP911.com

BROWARD COUNTY RADIO PROJECT

BROWARD COUNTY FL

DEERFIELD BEACH TOWER SITE PLAN

15-146

REVISIONS			DRAWING TITLE	
REV	DESCRIPTION	DATE	DEERFIELD SITE PLAN	
1	Issued under 24	8/30/16	DRAWN BY: [ ]	
			1 OF 1	
			DATE: 08/30/16	DESIGN BY: [ ]
			CHECK BY: [ ]	APP'D BY: [ ]

Public Safety Communication Consultants



# Typical Tower



*Public Safety Communication Consultants*



# West Lake Tower Rendering View From Restroom Inside Park



*Public Safety Communication Consultants*





# West Lake Tower Rendering View From Coolidge Street

West Lake Park

From Coolidge St and N 14 Av

Legend





# West Lake Tower Rendering View From Homes on East Side of the Lake

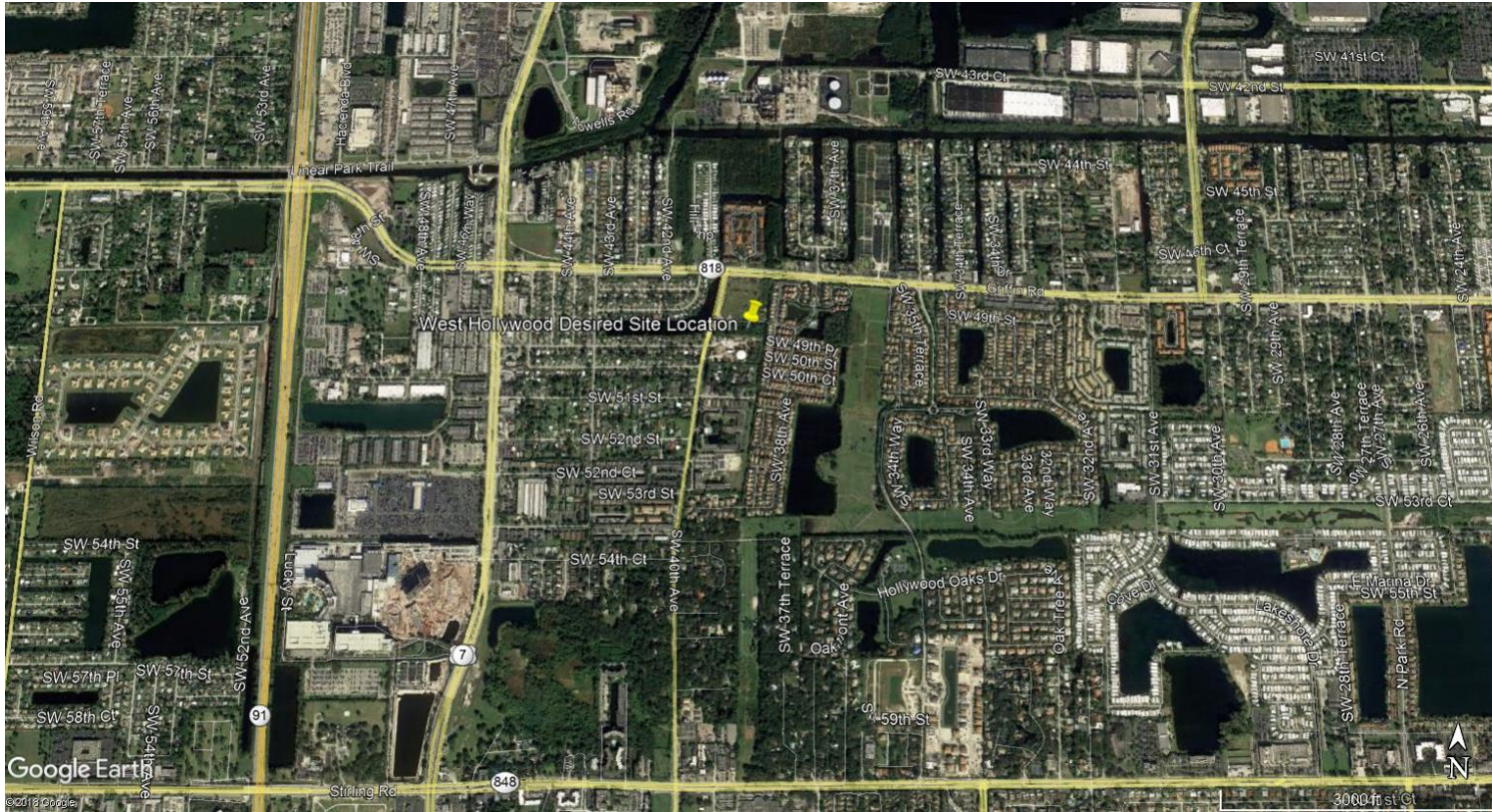


*Public Safety Communication Consultants*





# Waste Water Plant Site Location

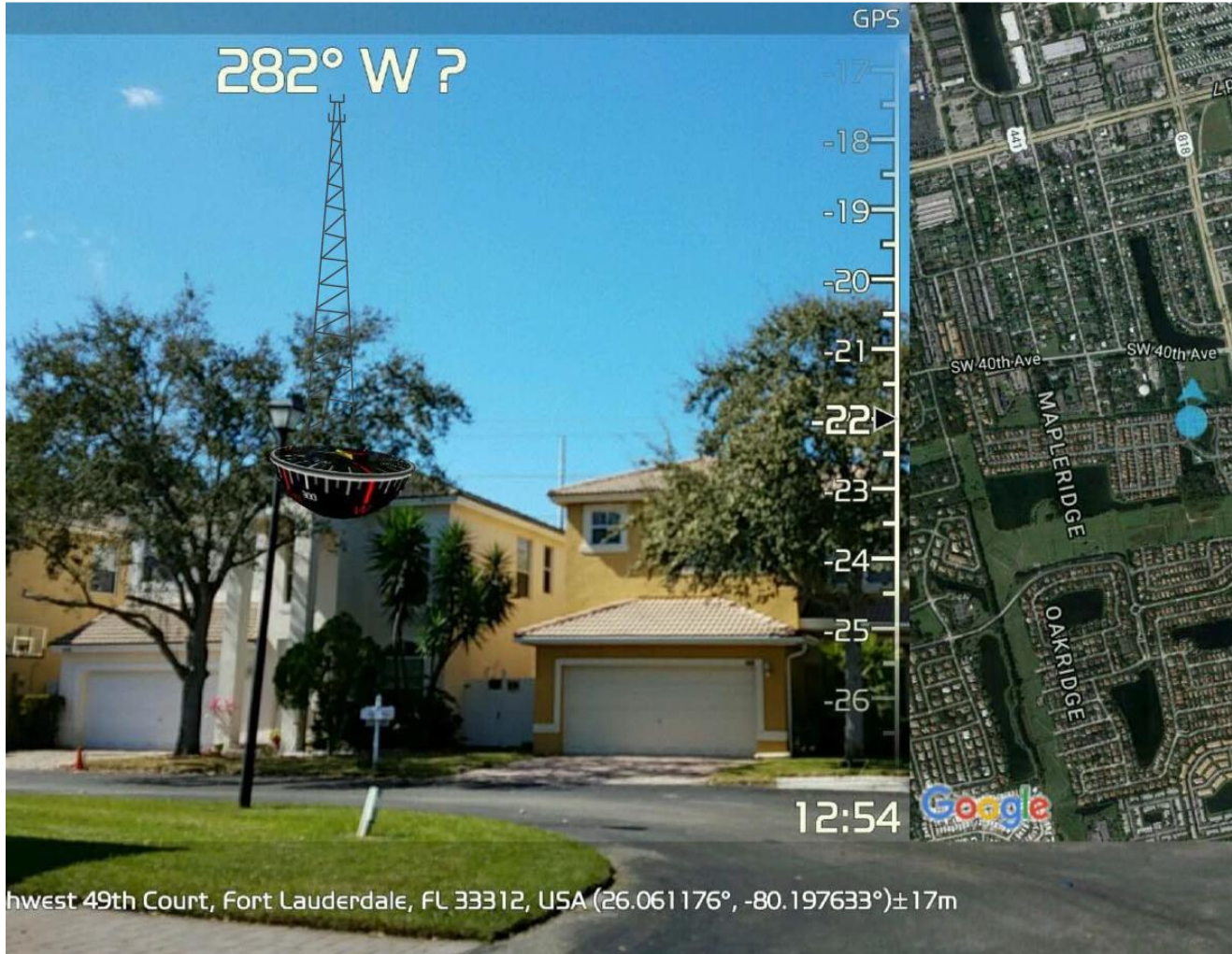


Public Safety Communication Consultants





# Waste Water Tower from Homes to the East



on Consultants





## Questions & Discussion

*Public Safety Communication Consultants*