

DOUGLAS WOOD

ASSOCIATES, INC. ■ STRUCTURAL ENGINEERS

City of Hollywood, Florida

Request for Qualifications:
Continuing Contract for Structural
Engineering Services (PW 14-009)
RFQ No.: 4421-14-RD

Douglas Wood Associates, Inc.
2100 Ponce de Leon Boulevard, Suite 1020
Coral Gables, Florida 33134

Telephone: (305) 461-3450 ext. 302

Fax: (305) 461-3650

Email: inbox@douglaswood.biz

Contact Person:
Douglas Wood, P.E., SECB, President

ORIGINAL

INNOVATIVE SOLUTIONS, TECHNICAL EXCELLENCE, RESPONSIVE SERVICE

DOUGLAS WOOD ASSOCIATES
Structural Engineers**TABLE OF CONTENTS**

Section	Page
I. Letter of Transmittal	1
II. SF 330	2
III. Profile of Consultant	22
IV. Resumes	29
V. Corporate Certificates	32
Sample Insurance Certificates	34
Proposer Acknowledgement	36
Addendum No. 1 Acknowledgement	37
Hold Harmless Statement	38
RFQ Checklist	39

ARCHITECT – ENGINEER QUALIFICATIONS

Standard Form 330

PART I – CONTRACT-SPECIFIC QUALIFICATIONS

A. CONTRACT INFORMATION

1. TITLE AND LOCATION *(City and State)*

Continuing Contract for Structural Engineering Services (PW 14-009)

2. PUBLIC NOTICE DATE

May 8, 2014

3. SOLICITATION OR PROJECT NUMBER

RFQ No.: 4421-14-RD

B. ARCHITECT-ENGINEER POINT OF CONTACT

4. NAME AND TITLE

Douglas Wood, P.E., SECB, President

5. NAME OF FIRM

Douglas Wood Associates

6. TELEPHONE NUMBER

305-461-3450

7. FAX NUMBER

305-461-3650

8. E-MAIL ADDRESS

inbox@douglaswood.biz

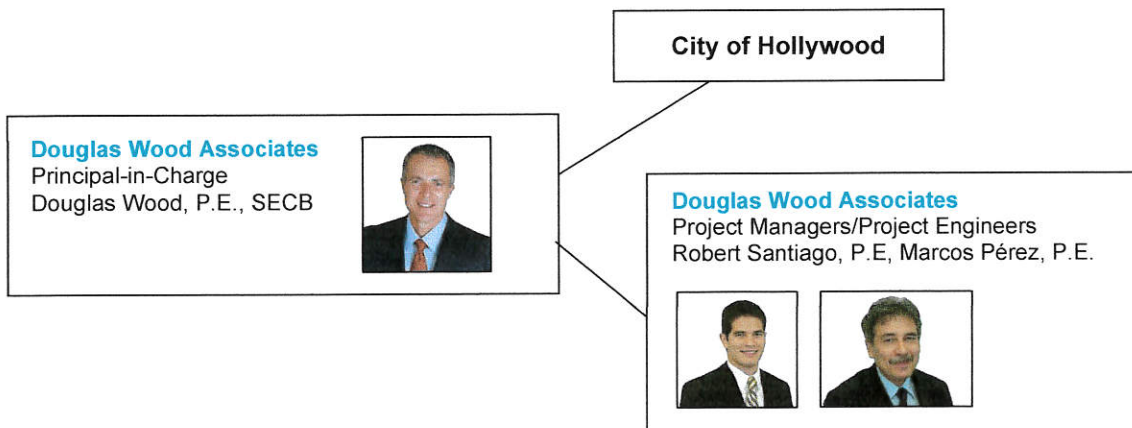
C. PROPOSED TEAM

(Complete this section for the prime contractor and all key subcontractors.)

(Check)				9. FIRM NAME	10. ADDRESS	11. ROLE IN THIS CONTRACT
PRIME	J.V.	PARTNER	SUBCON - TRACTOR			
a	<input checked="" type="checkbox"/>	<input type="checkbox"/>	<input type="checkbox"/>	Douglas Wood Associates, Inc.	2100 Ponce de Leon Boulevard Suite 1020 Coral Gables, FL 33134	Structural Engineering
				<input type="checkbox"/> CHECK IF BRANCH OFFICE		
b	<input type="checkbox"/>	<input type="checkbox"/>	<input type="checkbox"/>			
				<input type="checkbox"/> CHECK IF BRANCH OFFICE		
c	<input type="checkbox"/>	<input type="checkbox"/>	<input type="checkbox"/>			
				<input type="checkbox"/> CHECK IF BRANCH OFFICE		
d	<input type="checkbox"/>	<input type="checkbox"/>	<input type="checkbox"/>			
				<input type="checkbox"/> CHECK IF BRANCH OFFICE		

D. ORGANIZATIONAL CHART OF PROPOSED TEAM

☒ (Below)



E. RESUMES OF KEY PERSONNEL PROPOSED FOR THIS CONTRACT*(Complete one Section E for each key person)*

12. NAME	13. ROLE IN THIS CONTRACT	14. YEARS OF EXPERIENCE	
Douglas Wood, P.E., SECB	Principal-in-Charge – Structural Engineering	a. TOTAL	b. WITH CURRENT FIRM
		34	21

15. FIRM NAME AND LOCATION (City and State)

Douglas Wood Associates, Inc. Coral Gables, FL

16. EDUCATION (DEGREE AND SPECIALIZATION)

Bachelor of Science in Civil Engineering (*Graduated with Honors*)
 Bachelor of Architecture (*Graduated with Honors*)
 Associate in Arts (*Graduated with Honors*)

17. CURRENT PROFESSIONAL REGISTRATION (STATE AND DISCIPLINE)

Florida Professional Engineer / PE32092
 Florida Special Inspector / SI417
 Florida Architect / AR12111

18. OTHER PROFESSIONAL QUALIFICATIONS (*Publications, Organizations, Training, Awards, etc.*)**Certifications and Specialized Training:**

Certified by the Structural Engineering Certification Board
 ATC 20 and ATC 45 Post-Disaster Building Evaluation

LEED Green Associate

Professional Memberships:

American Concrete Institute, National Council of Structural Engineers Association, Florida Structural Engineers Association (South Florida Chapter Board of Directors, Past President, Past Treasurer), Florida Engineering Society, American Institute of Steel Construction, National Trust for Historic Preservation, Dade Heritage Trust

Awards:

- 2014 AIA Florida Honor Award of Excellence for Historic Preservation, University of Miami Art Building
- 2014 AIA Florida Honor Award of Excellence for Historic Preservation, Trinity Cathedral
- 2014 AIA Florida Honor Award of Merit for Historic Preservation, Vizcaya East and West Gate Lodges
- 2014 Florida Trust for Historic Preservation Outstanding Achievement Award, University of Miami Art Building
- 2013 ICRI Award of Merit (High-Rise Category), Soho Beach House, Miami Beach
- 2013 Florida Trust for Historic Preservation Outstanding Achievement Award, Vizcaya East and West Gate Lodges
- 2012 NCSEA Excellence in Structural Engineering Award, Miami Beach Soundscape Park
- 2012 Florida Trust for Historic Preservation, Statewide Preservation Award, Vizcaya Museum & Gardens East & West Gate Lodges (R.J. Heisenbottle Architects)
- 2012 Florida Trust for Historic Preservation, Statewide Preservation Award, Villa Serena Restoration (R.J. Heisenbottle Architects)
- 2012 City Beautiful Award for Outstanding Historic Preservation, Miracle Theater, presented by Coral Gables Chamber of Commerce
- 2012 Dade Heritage Trust Award, Vizcaya Museum & Gardens East & West Gate Lodges (R.J. Heisenbottle Architects)
- 2012 Dade Heritage Trust Award, Villa Serena Restoration (R.J. Heisenbottle Architects)
- 2011 Urban Land Institute Vision/Award Finalist, Soho Beach House (Shulman + Associates)
- 2011 Dade Heritage Trust Award, Soho Beach House (Shulman + Associates)
- 2010 Florida Trust for Historic Preservation Outstanding Achievement, Pinecrest Gardens Entrance Building Restoration (R.J. Heisenbottle Architects)
- 2010 Florida Trust for Historic Preservation Outstanding Achievement, Greynolds Park Boathouse Restoration (R.J. Heisenbottle Architects)
- 2009 AIA Miami Award of Excellence, Soho Beach House (Shulman + Associates)
- 2007 AIA Florida Merit Award of Excellence, Colony Theater Renovation (R.J. Heisenbottle Architects)
- 2007 Florida Trust for Historic Preservation, Temple Court Apartments (R.J. Heisenbottle Architects)
- 2007 AIA Florida Unbuilt Honor Award, Soho Beach House (Shulman + Associates)
- 2007 Florida Trust for Historic Preservation, Colony Theater Adaptive Re-Use (R.J. Heisenbottle Architects)
- 2007 Dade Heritage Trust Outstanding Renovation of an Historic Site, Temple Court Apartments (R.J. Heisenbottle Architects)
- 2007 Miami Design Preservation League Barbara Capitan Award, Colony Theater Renovation
- 2006 AIA Honor Award, RBK Headquarters (Rene Gonzalez Architect)
- 2006 Dade Heritage Trust Outstanding Preservation Project Award, Colony Theater (R.J. Heisenbottle Architects)
- 2004 Florida Trust for Historic Preservation Award, City of Miami City Hall (R.J. Heisenbottle Architects)
- 2003 Dade Heritage Trust Outstanding Contribution to Historic Preservation, Pan American Airways Terminal, Miami City Hall (R.J. Heisenbottle Architects)
- 2003 AIA Miami, Award of Merit for Design, Pan American Airways Terminal, Miami City Hall (R.J. Heisenbottle Architects)

19. RELEVANT PROJECTS

(1) TITLE AND LOCATION (City and State)		(2) YEAR COMPLETED	
		PROFESSIONAL SERVICES	CONSTRUCTION (If applicable)
a.	South Side School Restoration/Renovation Fort Lauderdale, Florida	2012	2012
(3) BRIEF DESCRIPTION (Brief scope, size, cost, etc.) AND SPECIFIC ROLE Douglas Wood Associates provided the structural engineering services for the investigation, historical restoration, renovation and complete structural enhancement to current Building Code requirements for this 13,300 square foot building. This building is a historical school which is being restored and adapted for reuse as a community center. Spaces include multi-purpose rooms, social rooms, dance studio, recital studio, ceramics studio, art studio, computer lab, fitness studio, kitchen classroom, restrooms, offices and an open-air performing space. Estimated construction cost: \$2 million Role: Structural Engineering			
<input checked="" type="checkbox"/> Check if project performed with current firm			
b.	Miami International Airport Building 3094 & 3095 Miami, FL	2010	2010
(3) BRIEF DESCRIPTION (Brief scope, size, cost, etc.) AND SPECIFIC ROLE This project consisted of the repair, restoration and renovation of two buildings: the seven-level post-tensioned and reinforced concrete parking garage and the large aircraft hangar (steel-framed with metal siding) and attached office tower (reinforced concrete). The project included concrete repairs, steel siding repairs and replacement, refurbishment of stairwells, door replacements, lighting repairs and improvements, expansion joint replacements, drainage repairs, other miscellaneous repairs and restoration, concrete coatings throughout and repainting of the hangar exterior. Role: Structural Engineering			
<input checked="" type="checkbox"/> Check if project performed with current firm			
c.	International Studies School (LLL-1) Coral Gables, Florida	2012	2012
(3) BRIEF DESCRIPTION (Brief scope, size, cost, etc.) AND SPECIFIC ROLE Douglas Wood Associates provided the complete structural engineering services for the conversion of the existing five-story commercial office building to a high school. This project included the addition of approximately 1,300 square feet of enclosed space on the fifth floor, addition of windows to the exterior walls, addition of two new stair towers with exterior access corridors, enhancement of existing structural systems for assembly areas and corridors and enhancement of structural systems for wind loads. Estimated construction cost: \$9.2 million. Role: Structural Engineering			
<input checked="" type="checkbox"/> Check if project performed with current firm			
d.	Florida International University - Misc. Services Agreement Miami, Florida	2010	2010
(4) BRIEF DESCRIPTION (Brief scope, size, cost, etc.) AND SPECIFIC ROLE Under a miscellaneous services agreement, Douglas Wood Associates provided the structural engineering for several projects for Florida International University, including: the 40-Year Recertification investigation and report (structural) for the FIU-Wolfsonian; the structural steel sub framing of the roof access ladders for the FIU-Pharmed Arena; and the new steel framing for the replacement of three existing curtain walls of the stair tower of the FIU Labor Building. Role: Structural Engineering			
<input checked="" type="checkbox"/> Check if project performed with current firm			
e.	Vizcaya Museum & Gardens Miami, Florida	2013	2013
(5) BRIEF DESCRIPTION (Brief scope, size, cost, etc.) AND SPECIFIC ROLE Douglas Wood Associates, Inc. provided the structural engineering services for the historic investigation, evaluation and restoration for the various systems in the main house, basement, casino mound, east gate lodge, west gate lodge, gardens, farm village, garage and blacksmith shop, along with restroom additions, structural roof enhancements and reroofing of several other buildings, completed and on-going in multiple phases. Estimate Construction Cost \$6 Million. Role: Structural Engineering			
<input checked="" type="checkbox"/> Check if project performed with current firm			

E. RESUMES OF KEY PERSONNEL PROPOSED FOR THIS CONTRACT

(Complete one Section E for each key person.)

12. NAME	13. ROLE IN THIS CONTRACT	14. YEARS OF EXPERIENCE	
Robert Santiago, P.E.	Project Manager – Structural Engineering	a. TOTAL	b. WITH CURRENT FIRM
		30	9

15. FIRM NAME AND LOCATION (City and State)

Douglas Wood Associates, Inc. Coral Gables, FL

16. EDUCATION (DEGREE AND SPECIALIZATION)

Bachelor of Structural Engineering (*Graduated with Honors*)
 Bachelor of Science in Civil Engineering (*Graduated with Honors*)

17. CURRENT PROFESSIONAL REGISTRATION (STATE AND DISCIPLINE)

Florida Professional Engineer / PE63248

18. OTHER PROFESSIONAL QUALIFICATIONS (Publications, Organizations, Training, Awards, etc.)

Certifications and Specialized Training:

ATC 20 and ATC 45 Post-Disaster Building Evaluation

Professional Memberships:

Florida Structural Engineers Association (South Florida Chapter)

American Institute of Steel Construction

Awards:

- 2014 AIA Florida Honor Award of Excellence for Historic Preservation, University of Miami Art Building
- 2014 AIA Florida Honor Award of Excellence for Historic Preservation, Trinity Cathedral
- 2014 AIA Florida Honor Award of Merit for Historic Preservation, Vizcaya East and West Gate Lodges
- 2014 Florida Trust for Historic Preservation Outstanding Achievement Award, University of Miami Art Building
- 2013 ICRI Award of Merit (High-Rise Category), Soho Beach House, Miami Beach
- 2013 Florida Trust for Historic Preservation Outstanding Achievement Award, Vizcaya East and West Gate Lodges
- 2012 NCSEA Excellence in Structural Engineering Award, Miami Beach Soundscape Park
- 2012 Florida Trust for Historic Preservation, Statewide Preservation Award, Vizcaya Museum & Gardens East & West Gate Lodges (R.J. Heisenbottle Architects)
- 2012 Florida Trust for Historic Preservation, Statewide Preservation Award, Villa Serena Restoration (R.J. Heisenbottle Architects)
- 2012 City Beautiful Award for Outstanding Historic Preservation, Miracle Theater, presented by Coral Gables Chamber of Commerce
- 2012 Dade Heritage Trust Award, Vizcaya Museum & Gardens East & West Gate Lodges (R.J. Heisenbottle Architects)
- 2012 Dade Heritage Trust Award, Villa Serena Restoration (R.J. Heisenbottle Architects)
- 2011 Urban Land Institute Vision/Award Finalist, Soho Beach House (Shulman + Associates)
- 2011 Dade Heritage Trust Award, Soho Beach House (Shulman + Associates)
- 2010 Florida Trust for Historic Preservation Outstanding Achievement, Pinecrest Gardens Entrance Building Restoration (R.J. Heisenbottle Architects)
- 2010 Florida Trust for Historic Preservation Outstanding Achievement, Greynolds Park Boathouse Restoration (R.J. Heisenbottle Architects)
- 2009 AIA Miami Award of Excellence, Soho Beach House (Shulman + Associates)
- 2007 AIA Florida Merit Award of Excellence, Colony Theater Renovation (R.J. Heisenbottle Architects)
- 2007 Florida Trust for Historic Preservation, Temple Court Apartments (R.J. Heisenbottle Architects)
- 2007 AIA Florida Unbuilt Honor Award, Soho Beach House (Shulman + Associates)
- 2007 Florida Trust for Historic Preservation, Colony Theater Adaptive Re-Use (R.J. Heisenbottle Architects)
- 2007 Dade Heritage Trust Outstanding Renovation of an Historic Site, Temple Court Apartments (R.J. Heisenbottle Architects)
- 2007 Miami Design Preservation League Barbara Capitman Award, Colony Theater Renovation
- 2006 AIA Honor Award, RBK Headquarters (Rene Gonzalez Architect)
- 2006 Dade Heritage Trust Outstanding Preservation Project Award, Colony Theater (R.J. Heisenbottle Architects)
- 2004 Florida Trust for Historic Preservation Award, City of Miami City Hall (R.J. Heisenbottle Architects)
- 2003 Dade Heritage Trust Outstanding Contribution to Historic Preservation, Pan American Airways Terminal, Miami City Hall (R.J. Heisenbottle Architects)
- 2003 AIA Miami, Award of Merit for Design, Pan American Airways Terminal, Miami City Hall (R.J. Heisenbottle Architects)

19. RELEVANT PROJECTS

	(1) TITLE AND LOCATION (City and State)	(2) YEAR COMPLETED	
		PROFESSIONAL SERVICES	CONSTRUCTION (If applicable)
a.	Miami International Airport Building 3094 & 3095 Miami, FL	2010	2010
(3) BRIEF DESCRIPTION (Brief scope, size, cost, etc.) AND SPECIFIC ROLE <p>This project consisted of the repair, restoration and renovation of two buildings: the seven-level post-tensioned and reinforced concrete parking garage and the large aircraft hangar (steel-framed with metal siding) and attached office tower (reinforced concrete). The project included concrete repairs, steel siding repairs and replacement, refurbishment of stairwells, door replacements, lighting repairs and improvements, expansion joint replacements, drainage repairs, other miscellaneous repairs and restoration, concrete coatings throughout and repainting of the hangar exterior.</p> <p>Role: Structural Engineering</p> <p><input checked="" type="checkbox"/> Check if project performed with current firm</p>			
b.	Miami-Dade Fire Rescue Training Facility Miami-Dade County, Florida	2010	2010
(3) BRIEF DESCRIPTION (Brief scope, size, cost, etc.) AND SPECIFIC ROLE <p>New fire rescue training complex, consisting of multiple buildings with the largest building at 52,000 square feet and total project building area of 115,000 square feet. The main building includes classrooms, adjustable meeting rooms, gymnasium, locker rooms, offices, library, training pool and a working fire station. Other buildings provide venues for various training activities and simulations (including multiple burn rooms). These buildings included a multi-story apartment, two-story residence and commercial/industrial building. Other training venues included hazardous materials, confined spaces, extraction and even a mock ship.</p> <p>Role: Structural Engineering</p> <p><input checked="" type="checkbox"/> Check if project performed with current firm</p>			
c.	International Studies School (LLL-1) Coral Gables, Florida	2012	2012
(3) BRIEF DESCRIPTION (Brief scope, size, cost, etc.) AND SPECIFIC ROLE <p>Douglas Wood Associates, Inc. provided the complete structural engineering services for the conversion of the existing five-story commercial office building to a high school. This project included the addition of approximately 1,300 square feet of enclosed space on the fifth floor, addition of windows to the exterior walls, addition of two new stair towers with exterior access corridors, enhancement of existing structural systems for assembly areas and corridors and enhancement of structural systems for wind loads.</p> <p>Role: Structural Engineering</p> <p><input checked="" type="checkbox"/> Check if project performed with current firm</p>			
d.	Hampton House Restoration Miami, FL	2014	2014
(4) BRIEF DESCRIPTION (Brief scope, size, cost, etc.) AND SPECIFIC ROLE <p>Few historic places in South Florida can boast of its legacy, which drew people from all over the nation, including the weekly meetings of the Congress of Racial Equality (CORE) and frequent guests Martin Luther King, Jr., Malcom X and Muhammad Ali. This project includes extensive repair, renovation and rehabilitation for use as a museum, archive, entertainment venue and community center.</p> <p>Role: Structural Engineering</p> <p><input checked="" type="checkbox"/> Check if project performed with current firm</p>			
e.	Vizcaya Museum & Gardens Miami, Florida	2013	2013
(5) BRIEF DESCRIPTION (Brief scope, size, cost, etc.) AND SPECIFIC ROLE <p>Douglas Wood Associates, Inc. provided the structural engineering services for the historic investigation, evaluation and restoration for the various systems in the main house, basement, casino mound, east gate lodge, west gate lodge, gardens, farm village, garage and blacksmith shop, along with restroom additions, structural roof enhancements and reroofing of several other buildings, completed and on-going in multiple phases. Estimate Construction Cost \$6 Million.</p> <p>Role: Structural Engineering</p> <p><input checked="" type="checkbox"/> Check if project performed with current firm</p>			

E. RESUMES OF KEY PERSONNEL PROPOSED FOR THIS CONTRACT

(Complete one Section E for each key person)

12. NAME	13. ROLE IN THIS CONTRACT	14. YEARS OF EXPERIENCE	
		a. TOTAL	b. WITH CURRENT FIRM
Marcos Perez, P.E.	Project Engineer – Structural Engineering	12	6

15. FIRM NAME AND LOCATION (City and State)

Douglas Wood Associates, Inc. Coral Gables, FL

16. EDUCATION (DEGREE AND SPECIALIZATION)

Master of Civil Engineering (*Graduated with Honors*)
Bachelor of Science in Civil Engineering (*Graduated with Honors*)
Associate in Arts (*Graduated with Honors*)

17. CURRENT PROFESSIONAL REGISTRATION (STATE AND DISCIPLINE)

Florida Professional Engineer / PE67422

18. OTHER PROFESSIONAL QUALIFICATIONS (*Publications, Organizations, Training, Awards, etc.*)

Professional Memberships:

Florida Structural Engineers Association (South Florida Chapter)
American Institute of Steel Construction

Awards:

- 2014 AIA Florida Honor Award of Excellence for Historic Preservation, University of Miami Art Building
- 2014 AIA Florida Honor Award of Excellence for Historic Preservation, Trinity Cathedral
- 2014 AIA Florida Honor Award of Merit for Historic Preservation, Vizcaya East and West Gate Lodges
- 2014 Florida Trust for Historic Preservation Outstanding Achievement Award, University of Miami Art Building
- 2013 ICRI Award of Merit (High-Rise Category), Soho Beach House, Miami Beach
- 2013 Florida Trust for Historic Preservation Outstanding Achievement Award, Vizcaya East and West Gate Lodges
- 2012 NCSEA Excellence in Structural Engineering Award, Miami Beach Soundscape Park
- 2012 Florida Trust for Historic Preservation, Statewide Preservation Award, Vizcaya Museum & Gardens East & West Gate Lodges (R.J. Heisenbottle Architects)
- 2012 Florida Trust for Historic Preservation, Statewide Preservation Award, Villa Serena Restoration (R.J. Heisenbottle Architects)
- 2012 City Beautiful Award for Outstanding Historic Preservation, Miracle Theater, presented by Coral Gables Chamber of Commerce
- 2012 Dade Heritage Trust Award, Vizcaya Museum & Gardens East & West Gate Lodges (R.J. Heisenbottle Architects)
- 2012 Dade Heritage Trust Award, Villa Serena Restoration (R.J. Heisenbottle Architects)
- 2011 Urban Land Institute Vision/Award Finalist, Soho Beach House (Shulman + Associates)
- 2011 Dade Heritage Trust Award, Soho Beach House (Shulman + Associates)
- 2010 Florida Trust for Historic Preservation Outstanding Achievement, Pinecrest Gardens Entrance Building Restoration (R.J. Heisenbottle Architects)
- 2010 Florida Trust for Historic Preservation Outstanding Achievement, Greynolds Park Boathouse Restoration (R.J. Heisenbottle Architects)
- 2009 AIA Miami Award of Excellence, Soho Beach House (Shulman + Associates)
- 2007 AIA Florida Merit Award of Excellence, Colony Theater Renovation (R.J. Heisenbottle Architects)
- 2007 Florida Trust for Historic Preservation, Temple Court Apartments (R.J. Heisenbottle Architects)
- 2007 AIA Florida Unbuilt Honor Award, Soho Beach House (Shulman + Associates)
- 2007 Florida Trust for Historic Preservation, Colony Theater Adaptive Re-Use (R.J. Heisenbottle Architects)
- 2007 Dade Heritage Trust Outstanding Renovation of an Historic Site, Temple Court Apartments (R.J. Heisenbottle Architects)
- 2007 Miami Design Preservation League Barbara Capitman Award, Colony Theater Renovation
- 2006 AIA Honor Award, RBK Headquarters (Rene Gonzalez Architect)
- 2006 Dade Heritage Trust Outstanding Preservation Project Award, Colony Theater (R.J. Heisenbottle Architects)
- 2004 Florida Trust for Historic Preservation Award, City of Miami City Hall (R.J. Heisenbottle Architects)
- 2003 Dade Heritage Trust Outstanding Contribution to Historic Preservation, Pan American Airways Terminal, Miami City Hall (R.J. Heisenbottle Architects)
- 2003 AIA Miami, Award of Merit for Design, Pan American Airways Terminal, Miami City Hall (R.J. Heisenbottle Architects)

19. RELEVANT PROJECTS

	(1) TITLE AND LOCATION (City and State)	(2) YEAR COMPLETED	
		PROFESSIONAL SERVICES	CONSTRUCTION (If applicable)
a.	Vizcaya Museum & Gardens Miami, Florida	2009	2009
(3) BRIEF DESCRIPTION (Brief scope, size, cost, etc.) AND SPECIFIC ROLE Douglas Wood Associates, Inc. provided the structural engineering services for the historic investigation, evaluation and restoration for the various systems in the main house, basement, casino mound, east gate lodge, west gate lodge, gardens, farm village, garage and blacksmith shop, along with restroom additions, structural roof enhancements and reroofing of several other buildings, completed and on-going in multiple phases. Estimate Construction Cost \$6 Million. Role: Structural Engineering			
<input checked="" type="checkbox"/> Check if project performed with current firm			
b.	Miami International Airport Building 3094 & 3095 Miami, FL	2010	2010
(3) BRIEF DESCRIPTION (Brief scope, size, cost, etc.) AND SPECIFIC ROLE This project consisted of the repair, restoration and renovation of two buildings: the seven-level post-tensioned and reinforced concrete parking garage and the large aircraft hangar (steel-framed with metal siding) and attached office tower (reinforced concrete). The project included concrete repairs, steel siding repairs and replacement, refurbishment of stairwells, door replacements, lighting repairs and improvements, expansion joint replacements, drainage repairs, other miscellaneous repairs and restoration, concrete coatings throughout and repainting of the hangar exterior. Role: Structural Engineering			
<input checked="" type="checkbox"/> Check if project performed with current firm			
c.	International Studies School (LLL-1) Coral Gables, Florida	2012	2012
(3) BRIEF DESCRIPTION (Brief scope, size, cost, etc.) AND SPECIFIC ROLE Douglas Wood Associates provided the complete structural engineering services for the conversion of the existing five-story commercial office building to a high school. This project included the addition of approximately 1,300 square feet of enclosed space on the fifth floor, addition of windows to the exterior walls, addition of two new stair towers with exterior access corridors, enhancement of existing structural systems for assembly areas and corridors and enhancement of structural systems for wind loads. Estimated construction cost: \$9.2 million. Role: Structural Engineering			
<input checked="" type="checkbox"/> Check if project performed with current firm			
d.	Miami-Dade Fire Rescue Training Facility Miami-Dade County, Florida	2010	2010
(4) BRIEF DESCRIPTION (Brief scope, size, cost, etc.) AND SPECIFIC ROLE New fire rescue training complex, consisting of multiple buildings with the largest building at 52,000 square feet and total project building area of 115,000 square feet. The main building includes classrooms, adjustable meeting rooms, gymnasium, locker rooms, offices, library, training pool and a working fire station. Other buildings provide venues for various training activities and simulations (including multiple burn rooms). These buildings included a multi-story apartment, two-story residence and commercial/industrial building. Other training venues included hazardous materials, confined spaces, extraction and even a mock ship. Role: Structural Engineering			
<input checked="" type="checkbox"/> Check if project performed with current firm			
e.	Hampton House Restoration Miami, FL	2014	2014
(5) BRIEF DESCRIPTION (Brief scope, size, cost, etc.) AND SPECIFIC ROLE Few historic places in South Florida can boast of its legacy, which drew people from all over the nation, including the weekly meetings of the Congress of Racial Equality (CORE) and frequent guests Martin Luther King, Jr., Malcom X and Muhammad Ali. This project includes extensive repair, renovation and rehabilitation for use as a museum, archive, entertainment venue and community center. Role: Structural Engineering			
<input checked="" type="checkbox"/> Check if project performed with current firm			

F. EXAMPLE PROJECTS WHICH BEST ILLUSTRATE PROPOSED TEAM'S QUALIFICATIONS FOR THIS CONTRACT
 (Present as many projects as requested by the agency, or 10 projects, if not specified.
 Complete one Section F for each project)

20. EXAMPLE PROJECT KEY NUMBER
 1

22. YEAR COMPLETED

21. TITLE AND LOCATION (City and State)

Soundscape Park and ExoStage
 Miami Beach, Florida

PROFESSIONAL SERVICES
 2011

CONSTRUCTION (if applicable)
 2011

23. PROJECT OWNER'S INFORMATION

a. PROJECT OWNER

City of Miami Beach

b. POINT OF CONTACT NAME

Prime Consultant & Lead Designer
Ms. Jamie Maslyn Larson
West 8 New York

c. POINT OF CONTACT TELEPHONE NUMBER

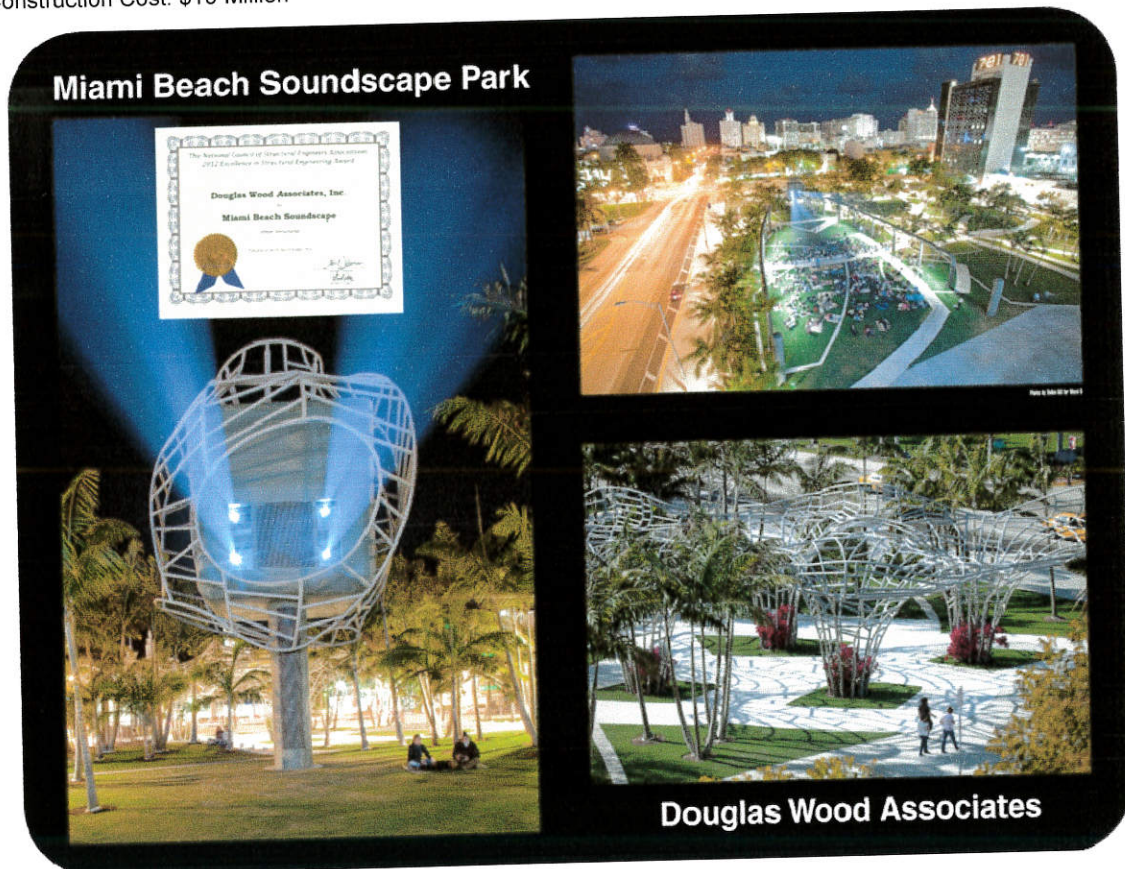
Tel. 212-285-0088
j.maslyn@west8.com

24. BRIEF DESCRIPTION OF PROJECT AND RELEVANCE TO THIS CONTRACT (Include scope, size, and cost)

Scope/Description; Three acre urban park adjacent to the Frank Gehry-designed New World Center (symphony hall). This park supports a multitude of day and night uses, including a state of the art sound and projection system which projects live concerts and other artistic programming on to the 7,000 square foot wall of the symphony hall. The park is complemented by a mosaic of white concrete sidewalks, seating walls and iconic aluminum pergolas (sculptural abstractions of cumulus clouds rising to a height of up to 22.5 feet) supporting flowering bougainvillea vines.

Douglas Wood Associates, Inc. provided the complete structural engineering services, including schematic design and design development consultation, analysis, design, preparation of construction documents, assistance with bidding and permitting, construction administration and construction inspection.

Estimated Construction Cost: \$10 Million



25. FIRMS FROM SECTION C INVOLVED WITH THIS PROJECT

(1) FIRM NAME
 a. **Douglas Wood Associates, Inc.**

(2) FIRM LOCATION (City and State)
Coral Gables, Florida

(3) ROLE
Structural Engineering

F. EXAMPLE PROJECTS WHICH BEST ILLUSTRATE PROPOSED TEAM'S QUALIFICATIONS FOR THIS CONTRACT
(Present as many projects as requested by the agency, or 10 projects, if not specified. Complete one Section F for each project)

20. EXAMPLE PROJECT KEY NUMBER

2

21. TITLE AND LOCATION (City and State)

Pérez Art Museum Miami
 Miami, Florida

22. YEAR COMPLETED

PROFESSIONAL SERVICES
 2014

CONSTRUCTION (if applicable)
 2014

23. PROJECT OWNER'S INFORMATION

a. PROJECT OWNER

Miami-Dade County

b. POINT OF CONTACT NAME

Mr. Robert Portnoff
 Paratus Group

c. POINT OF CONTACT TELEPHONE NUMBER

Tel. 212-334-7700

rportnoff@paratusgroup.com

24. BRIEF DESCRIPTION OF PROJECT AND RELEVANCE TO THIS CONTRACT (Include scope, size, and cost)

Scope/Description:

This exciting new, world-class art museum is presently under construction in Museum Park on waterfront site facing the Seaport of Miami. This building will be a Miami landmark designed by world-famous architects Herzog and deMeuron and engineers Arup USA. Its three stories will provide 2000,000 square feet of exhibition and program space plus work shops, storage, offices, parking and other support spaces.

Douglas Wood Associates, Inc. provided consultation services to the project team throughout the project, foundation design, construction administration services and Special Inspection.



25. FIRMS FROM SECTION C INVOLVED WITH THIS PROJECT

(1) FIRM NAME

a. **Douglas Wood Associates, Inc.**

(2) FIRM LOCATION (City and State)

Coral Gables, Florida

(3) ROLE

Structural Engineering

F. EXAMPLE PROJECTS WHICH BEST ILLUSTRATE PROPOSED TEAM'S QUALIFICATIONS FOR THIS CONTRACT

(Present as many projects as requested by the agency, or 10 projects, if not specified. Complete one Section F for each project)

20. EXAMPLE PROJECT KEY NUMBER

3

21. TITLE AND LOCATION (City and State)

Miami-Dade County Fire Rescue Training Facility
Miami-Dade County, Florida

22. YEAR COMPLETED

PROFESSIONAL SERVICES
2010

CONSTRUCTION (if applicable)
2010

23. PROJECT OWNER'S INFORMATION

a. PROJECT OWNER

Miami-Dade County

b. POINT OF CONTACT NAME

Anthony Valino
AECOM

c. POINT OF CONTACT TELEPHONE NUMBER

Tel. (305) 444-4691 ext. 358
Anthony.Valino@aecom.com

24. BRIEF DESCRIPTION OF PROJECT AND RELEVANCE TO THIS CONTRACT (Include scope, size, and cost)

Scope/Description;

New fire rescue training complex, consisting of multiple buildings with the largest building at 52,000 square feet and total project building area of 115,000 square feet. The main building includes classrooms, adjustable meeting rooms, gymnasium, locker rooms, offices, library, training pool and a working fire station. Other buildings provide venues for various training activities and simulations (including multiple burn rooms). These buildings included a multi-story apartment, two-story residence and commercial/industrial building. Other training venues included hazardous materials, confined spaces, extraction and even a mock ship.

Scope of Services Provided: Full structural engineering services for investigation, assessment, evaluation, preparation of construction documents, bidding assistance, permitting, construction administration and construction inspection.

Estimated Construction
Cost: \$25 Million



25. FIRMS FROM SECTION C INVOLVED WITH THIS PROJECT

a. (1) FIRM NAME
Douglas Wood Associates, Inc.

(2) FIRM LOCATION (City and State)
Coral Gables, Florida

(3) ROLE
Structural Engineering

F. EXAMPLE PROJECTS WHICH BEST ILLUSTRATE PROPOSED TEAM'S QUALIFICATIONS FOR THIS CONTRACT

(Present as many projects as requested by the agency, or 10 projects, if not specified. Complete one Section F for each project)

20. EXAMPLE PROJECT KEY NUMBER

4

21. TITLE AND LOCATION (City and State)

Vizcaya Museum & Gardens
Coral Gables, Florida

22. YEAR COMPLETED

PROFESSIONAL SERVICES
2011

CONSTRUCTION (if applicable)
2011

23. PROJECT OWNER'S INFORMATION

a. PROJECT OWNER

Miami-Dade County

b. POINT OF CONTACT NAME

Dr. Joel Hoffman
Vizcaya Museum & Gardens

c. POINT OF CONTACT TELEPHONE NUMBER

Tel. 305-860-8422

joel.hoffman@vizcayamuseum.org

24. BRIEF DESCRIPTION OF PROJECT AND RELEVANCE TO THIS CONTRACT (Include scope, size, and cost)

Scope/Description;

Douglas Wood Associates, Inc. provided the structural engineering services for the historic investigation, evaluation and restoration for the various systems in the main house, basement, casino mound, east gate lodge, west gate lodge, gardens, farm village, garage and blacksmith shop, along with restroom additions, structural roof enhancements and reroofing of several other buildings, completed and on-going in multiple phases.

Estimated Construction Cost: \$6,000,000.00

Structural engineering services included investigation, evaluation, analysis, design, preparation of construction documents, construction administration and Special Inspection services.



25. FIRMS FROM SECTION C INVOLVED WITH THIS PROJECT

(1) FIRM NAME
a. **Douglas Wood Associates, Inc.**

(2) FIRM LOCATION (City and State)
Coral Gables, Florida

(3) ROLE
Structural Engineering

F. EXAMPLE PROJECTS WHICH BEST ILLUSTRATE PROPOSED TEAM'S QUALIFICATIONS FOR THIS CONTRACT

(Present as many projects as requested by the agency, or 10 projects, if not specified. Complete one Section F for each project)

20. EXAMPLE PROJECT KEY NUMBER

5

21. TITLE AND LOCATION (City and State)

Miami International Airport Building 3094 & 3095
Miami, Florida

22. YEAR COMPLETED

PROFESSIONAL SERVICES
2010

CONSTRUCTION (if applicable)
2010

23. PROJECT OWNER'S INFORMATION

a. PROJECT OWNER

Miami-Dade County

b. POINT OF CONTACT NAME

Paul Tolles
Merkury Development

c. POINT OF CONTACT TELEPHONE NUMBER

Tel. (305) 758-9888
paul@merkurydevelopment.com

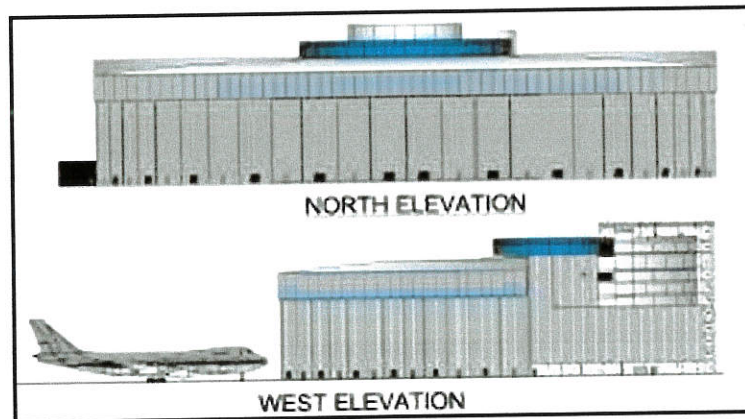
24. BRIEF DESCRIPTION OF PROJECT AND RELEVANCE TO THIS CONTRACT (Include scope, size, and cost)

Scope/Description;

This project consisted of the repair, restoration and renovation of two buildings: the seven-level post-tensioned and reinforced concrete parking garage and the large aircraft hangar (steel-framed with metal siding) and attached office tower (reinforced concrete). The project included concrete repairs, steel siding repairs and replacement, refurbishment of stairwells, door replacements, lighting repairs and improvements, expansion joint replacements, drainage repairs, other miscellaneous repairs and restoration, concrete coatings throughout and repainting of the hangar exterior.

Scope of Services Provided: Full structural engineering services and prime consultant services for investigation, assessment, evaluation, design, preparation of construction documents, bidding assistance, permitting, construction administration and construction inspection.

Estimated Construction
Cost: \$5.8 Million



25. FIRMS FROM SECTION C INVOLVED WITH THIS PROJECT

(1) FIRM NAME
a. **Douglas Wood Associates**

(2) FIRM LOCATION (City and State)
Coral Gables, Florida

(3) ROLE
Structural Engineering

F. EXAMPLE PROJECTS WHICH BEST ILLUSTRATE PROPOSED TEAM'S QUALIFICATIONS FOR THIS CONTRACT

(Present as many projects as requested by the agency, or 10 projects, if not specified. Complete one Section F for each project)

20. EXAMPLE PROJECT KEY NUMBER

6

21. TITLE AND LOCATION *(City and State)*

Greynold Park
Miami, Florida

22. YEAR COMPLETED

PROFESSIONAL SERVICES
2009

CONSTRUCTION (if applicable)
2009

23. PROJECT OWNER'S INFORMATION

a. PROJECT OWNER

Miami-Dade Park & Recreation Department

b. POINT OF CONTACT NAME

Mr. Richard Heisenbottle, FAIA
R.J. Heisenbottle Architects, P.A.

c. POINT OF CONTACT TELEPHONE NUMBER

Tel. 305-446-7799
richard@rjha.net

24. BRIEF DESCRIPTION OF PROJECT AND RELEVANCE TO THIS CONTRACT *(Include scope, size, and cost)*

Scope/Description;

Douglas Wood Associates, Inc. provided the complete structural engineering services for the historical W.P.A. park buildings including four limerock and wood-framed buildings (boat house, lagoon overlook and picnic shelter, restroom and park office). This was a phased effort beginning with investigations and evaluations followed by multiple projects for the repair, restoration and enhancement of the various historical and non-historical buildings in the park.

Estimated Construction Cost: \$4 Million



25. FIRMS FROM SECTION C INVOLVED WITH THIS PROJECT

(1) FIRM NAME

a. **Douglas Wood Associates, Inc.**

(2) FIRM LOCATION *(City and State)*

Coral Gables, Florida

(3) ROLE

Structural Engineering

F. EXAMPLE PROJECTS WHICH BEST ILLUSTRATE PROPOSED TEAM'S QUALIFICATIONS FOR THIS CONTRACT
(Present as many projects as requested by the agency, or 10 projects, if not specified. Complete one Section F for each project)

20. EXAMPLE PROJECT KEY NUMBER

7

21. TITLE AND LOCATION (City and State)

Haulover Beach Park
Miami-Dade County, Florida

22. YEAR COMPLETED

PROFESSIONAL SERVICES
2013

CONSTRUCTION (if applicable)
2013

23. PROJECT OWNER'S INFORMATION

a. PROJECT OWNER

Miami-Dade County

b. POINT OF CONTACT NAME

Mr. Richard Heisenbottle
R.J. Heisenbottle Architects, P.A.

c. POINT OF CONTACT TELEPHONE NUMBER

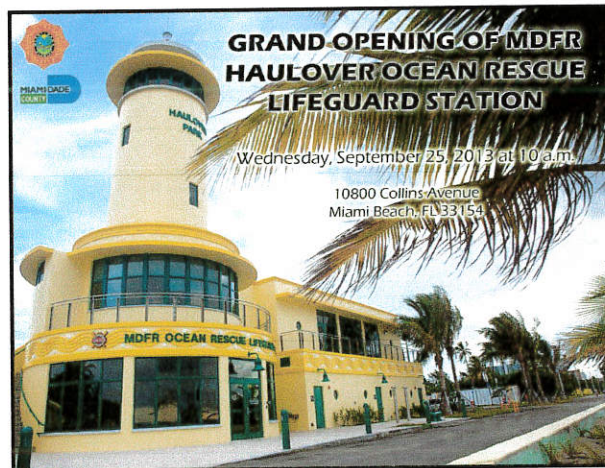
Tel. 305-446-7799 ext. 14
Richard@rjha.net

24. BRIEF DESCRIPTION OF PROJECT AND RELEVANCE TO THIS CONTRACT (Include scope, size, and cost)

Scope/Description;

Multiple buildings with a total area of 22,000 square feet, at different phases of completion, under construction and bidding, our recent work at Miami-Dade County's Haulover Park consists of the Beach & Marine Safety Facility (currently in bidding and a joint project of the Park & Recreation Department and the Fire Rescue Department), the Marina Dock Master Building (under construction) and four comfort stations (completed). The Beach & Marine Safety Facility features a nearly 80 ft. tall observation tower ("lighthouse") and includes a training room, lounge, offices, locker rooms, exercise room, conference room, storage and vehicle storage. The Dock Master Building also features a smaller "lighthouse", and the building includes a multi-purpose room, restrooms, offices, conference room and other support spaces.

Estimated Construction Cost: \$7 Million



25. FIRMS FROM SECTION C INVOLVED WITH THIS PROJECT

(1) FIRM NAME
a. Douglas Wood Associates, Inc.

(2) FIRM LOCATION (City and State)
Coral Gables, Florida

(3) ROLE
Structural Engineering

F. EXAMPLE PROJECTS WHICH BEST ILLUSTRATE PROPOSED TEAM'S QUALIFICATIONS FOR THIS CONTRACT

(Present as many projects as requested by the agency, or 10 projects, if not specified. Complete one Section F for each project)

20. EXAMPLE PROJECT KEY NUMBER

8

22. YEAR COMPLETED

21. TITLE AND LOCATION (City and State)

South Side School Restoration/Renovation
Fort Lauderdale, Florida

PROFESSIONAL SERVICES
2012

CONSTRUCTION (if applicable)
2012

23. PROJECT OWNER'S INFORMATION

a. PROJECT OWNER

City of Fort Lauderdale

b. PROJECT MANAGER CONTACT NAME

Mr. Richard J. Heisenbottle, FAIA
R.J. Heisenbottle Architects, P.A.

c. POINT OF CONTACT TELEPHONE NUMBER

Tel. 305-446-7799
richard@rjha.net

24. BRIEF DESCRIPTION OF PROJECT AND RELEVANCE TO THIS CONTRACT (Include scope, size, and cost)

Scope/Description;

Douglas Wood Associates provided the structural engineering services for the investigation, historical restoration, renovation and **complete structural enhancement to current Building Code requirements** for this 13,300 square foot building. This building is a historical school which is being restored and **adapted for reuse** as a community center. Spaces include multi-purpose rooms, social rooms, dance studio, recital studio, ceramics studio, art studio, computer lab, fitness studio, kitchen classroom, restrooms, offices and an open-air performing space.

Structural engineering services include complete investigation, analysis, design, assistance with bidding and permitting, and construction administration.

Estimated Construction Cost: \$2 Million



BEFORE



AFTER

25. FIRMS FROM SECTION C INVOLVED WITH THIS PROJECT

(1) FIRM NAME

a. **Douglas Wood Associates**

(2) FIRM LOCATION (City and State)

Coral Gables, FL

(3) ROLE

Structural Engineering

F. EXAMPLE PROJECTS WHICH BEST ILLUSTRATE PROPOSED TEAM'S QUALIFICATIONS FOR THIS CONTRACT

(Present as many projects as requested by the agency, or 10 projects, if not specified. Complete one Section F for each project)

20. EXAMPLE PROJECT KEY NUMBER

9

21. TITLE AND LOCATION (City and State)

Hampton House Restoration
Miami, Florida

22. YEAR COMPLETED

PROFESSIONAL SERVICES
2014

CONSTRUCTION (if applicable)
2014 (estimated)

23. PROJECT OWNER'S INFORMATION

a. PROJECT OWNER
Miami-Dade County

b. POINT OF CONTACT NAME
Daphne Gurri
Gurri Matute, PA

c. POINT OF CONTACT TELEPHONE NUMBER
Tel. (305) 661-0069
dgurri@gurrimatute.com

24. BRIEF DESCRIPTION OF PROJECT AND RELEVANCE TO THIS CONTRACT (Include scope, size, and cost)

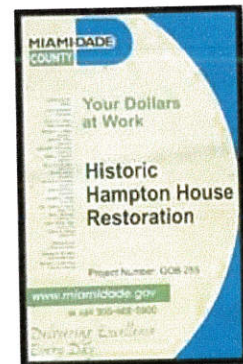
Scope/Description;

Douglas Wood Associates provided the structural engineering services for the renovation and restoration of the historic Hampton House. Few historic places in South Florida can boast of its legacy, which drew people from all over the nation, including the weekly meetings of the Congress of Racial Equality (CORE) and frequent guests Martin Luther King, Jr., Malcom X and Muhammad Ali.

This project includes extensive repair, renovation and rehabilitation for use as a museum, archive, entertainment venue and community center.

Douglas Wood Associates provided full structural engineering services, including investigation, evaluation, analysis, design, and preparation of construction documents. Construction on this project is expected to commence in the near future, and Douglas Wood Associates is also contracted to perform the upcoming construction administration and Special Inspection services.

Estimated Construction
Cost: \$8 Million



25. FIRMS FROM SECTION C INVOLVED WITH THIS PROJECT

(1) FIRM NAME
a. **Douglas Wood Associates, Inc.**

(2) FIRM LOCATION (City and State)
Coral Gables, Florida

(3) ROLE
Structural Engineering

F. EXAMPLE PROJECTS WHICH BEST ILLUSTRATE PROPOSED TEAM'S QUALIFICATIONS FOR THIS CONTRACT

(Present as many projects as requested by the agency, or 10 projects, if not specified. Complete one Section F for each project)

20. EXAMPLE PROJECT KEY NUMBER

10

21. TITLE AND LOCATION (City and State)

International Studies School (LLL-1)
Coral Gables, Florida

22. YEAR COMPLETED

PROFESSIONAL SERVICES
2012

CONSTRUCTION (if applicable)
2012

23. PROJECT OWNER'S INFORMATION

a. PROJECT OWNER

Miami-Dade County Public Schools

b. PROJECT MANAGER CONTACT NAME

Mr. Richard J. Heisenbottle, FAIA
R.J. Heisenbottle Architects, P.A.
2199 Ponce de Leon Blvd, #400
Coral Gables, FL 33134

c. POINT OF CONTACT TELEPHONE NUMBER

Tel. 305-446-7799 ext. 14
richard@rjha.net

24. BRIEF DESCRIPTION OF PROJECT AND RELEVANCE TO THIS CONTRACT (Include scope, size, and cost)

Scope/Description;

Douglas Wood Associates provided the complete structural engineering services for the conversion of the existing five-story commercial office building to a high school. This project included the addition of approximately 1,300 square feet of enclosed space on the fifth floor, addition of windows to the exterior walls, addition of two new stair towers with exterior access corridors, enhancement of existing structural systems for assembly areas and corridors and enhancement of structural systems for wind loads.

In conjunction with the architect, Douglas Wood Associates prepared a shell permit package, a permit was obtained and structural construction had begun prior to obtaining the permit for interior construction.

Estimated Construction
Cost: \$9.2 million



25. FIRMS FROM SECTION C INVOLVED WITH THIS PROJECT

(1) FIRM NAME

a. **Douglas Wood Associates**

(2) FIRM LOCATION (City and State)

Coral Gables, FL

(3) ROLE

Structural Engineering

G. KEY PERSONNEL PARTICIPATION IN EXAMPLE PROJECTS

[illegible]

29. EXAMPLE PROJECTS KEY

NO.	TITLE OF EXAMPLE PROJECT (FROM SECTION F)	NO.	TITLE OF EXAMPLE PROJECT (FROM SECTION F)
1	Soundscape Park & ExoStage	6	Greynolds Park
2	Pérez Art Museum Miami	7	Haulover Beach Park
3	Miami-Dade Fire Rescue Training Facility	8	Southside School
4	Vizcaya Museum & Gardens	9	Historic Hampton House
5	MIA Buildings 3094 & 3095	10	School LLL-1

H. ADDITIONAL INFORMATION

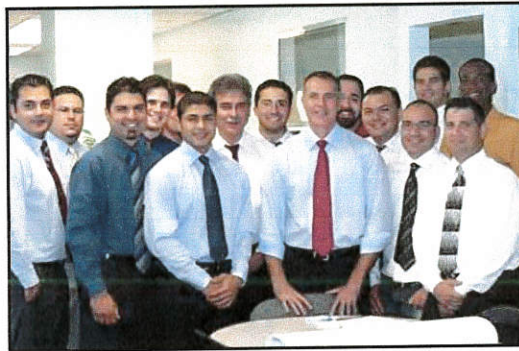
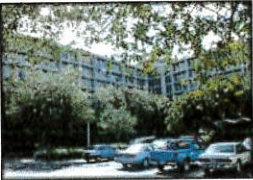
30. PROVIDE ANY ADDITIONAL INFORMATION REQUESTED BY THE AGENCY. ATTACH ADDITIONAL SHEETS AS NEEDED.



Douglas Wood Associates, Inc. is an award winning, Miami-based, structural engineering firm founded in 1992 with a commitment to provide the highest quality and most creative structural engineering for buildings and other structures. All of our professionals, para-professionals, support staff and resources are dedicated to this pursuit.



All of our efforts are aimed at providing our clients with the outstanding service needed to successfully achieve their project goals, and we are committed to providing our services in a timely manner and to being responsive to our clients and to other project team members. Our commitment to our work, and more importantly, to the achievement of our **clients' goals** are evidenced by the steady growth of the firm and its reputation.



Douglas Wood Associates, Inc. enjoys an unsurpassed reputation for **innovative solutions**, **technical excellence** and **responsive service**.



I. AUTHORIZED REPRESENTATIVE

The foregoing is a statement of facts.

31. SIGNATURE

32. DATE

May 27, 2014

33. NAME AND TITLE

Douglas Wood, P.E., SECB, President

DOUGLAS WOOD ASSOCIATES
Structural Engineers

PROFILE OF CONSULTANT

- a. **Douglas Wood Associates** is a local South Florida firm.
- b. **Douglas Wood Associates'** office is in Coral Gables, Florida.
- c. **Douglas Wood Associates** has a staff of sixteen full-time associates with four Professional Engineers (two of whom are also Special Inspectors) and seven Engineer Interns.

Douglas Wood Associates provides structural engineering for:

- 1) All types and sizes of buildings,
- 2) Unusual buildings and other structures,
- 3) Historical buildings, and
- 4) Building components (cladding, railings, stairs, screenwalls, curtainwalls, windows and doors)

Douglas Wood Associates provides the full range of structural engineering services, including:

- 1) Investigation and evaluation/assessment of existing structures,
- 2) 40-Year recertifications,
- 3) Conceptual and schematic design,
- 4) Analysis,
- 5) Design and construction documents,
- 6) Specifications,
- 7) Value engineering,
- 8) Bidding,
- 9) Permitting,
- 10) Construction administration, and
- 11) Special Inspection.

- d. For its entire **21-year** existence, **Douglas Wood Associates** has been providing high-quality, service and technical excellence for South Florida's municipal governments. Featured projects are:



DOUGLAS WOOD ASSOCIATES
Structural Engineers

- 1) **Soundscape Park and ExoStage**
This project was completed to rave reviews and includes an outdoor venue which projects live performance in the adjacent New World Symphony concert hall. For this project, **Douglas Wood Associates** was awarded the 2012 *Excellence in Structural Engineering Award* from the National Council of Structural Engineers Association.



Reference:

Jaime Maslyn Larson, West8

Telephone: (212) 285-0088

- 2) **Pérez Art Museum Miami**
This building is Miami-Dade County's most exciting new building project. **Douglas Wood Associates** was proud to be part of the world-class team of architects and engineers for this project. **Douglas Wood Associates** provided consultation, foundation design, Threshold Building Inspection, temporary foundation design and engineering for numerous components and sculpture installations.



Reference:

Robert Portnoff, Paratus Group

Telephone: (212) 334-7700 xt 109

- 3) **Repairs to Multi-Purpose Parking Facility**
This project consisted of an investigation of reported construction defects for this new multi-leveled municipal parking garage, followed by a corresponding repair project.

Reference:

Humberto Cabanas, City of Miami Beach

Telephone: (305) 673-7071 xt 4105



DOUGLAS WOOD ASSOCIATES
Structural Engineers

- 4) **Vizcaya Museum and Gardens**
Douglas Wood Associates has provided the structural engineering for many projects at this National Historic Landmark for more than two decades. Recent projects have included repairs to the main house, site improvements, restoration and enhancement of the East and West Gate Lodges, renovation of the café, restoration of the Sutri fountain and more.



Reference:

Dr. Joel Hoffman, Vizcaya Museum & Gardens
Telephone: (305) 860-8422

- 5) **48th Street Pedestrian Bridges**
This project consisted of the construction of two new bicycle/pedestrian bridges over a canal. These bridges were constructed of galvanized steel and span approximately 60 feet,



Reference:

Marcos Redondo, Miami-Dade County, Public Works Dept.
Telephone: (305) 375-3848

The following is a partial list of **Douglas Wood Associates'** municipal government projects over just the past seven years:

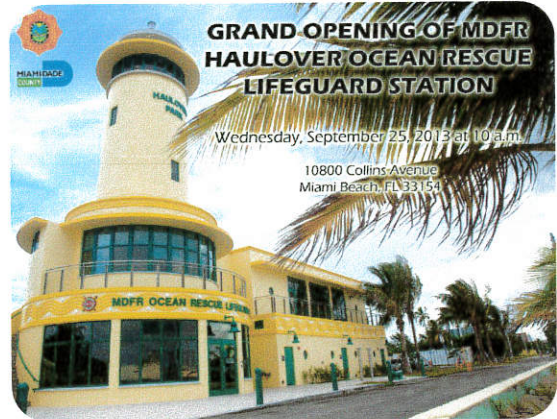
Miami-Dade County

- Historic Hampton House (Community Center)
- Wynwood Neighborhood Center
- Greynolds Park (Numerous projects including pedestrian bridges, numerous building renovations, shade shelters, new sitewalls and fences, historic restoration, and new entrance booths)
- Miami-Dade Fire Rescue Training Facility
- Haulover Beach Park Lifeguard Facility
- Haulover Beach Park Restrooms
- Haulover Beach Park Dockmaster Facility
- Crandon Park Restrooms
- 48th Street Bicycle/Pedestrian Bridges

DOUGLAS WOOD ASSOCIATES
Structural Engineers

Miami-Dade County (cont.)

- Pérez Art Museum Miami
- Military Museum (Richmond Naval Air Station)
- Fire-Rescue Monument Improvements
- Datran Center Parking Garage Evaluation
- Ward Tower Concrete Repairs
- Miami International Airport Booms & Skimmers
- Miami International Airport Repair and renovation to Buildings 3094 and 3095
- Miami International Airport Reroofing of Building 3095
- Vizcaya Museum and Gardens (Numerous projects over more than two decades)



City of Miami

- Bryan Park Community Center
- West End Park Community Center
- Antonio Maceo Community Center
- Coconut Grove Convention Center Demolition
- West End Park Building Evaluation



City of Coral Gables

- Historic City Hall Emergency Repairs
- Restoration of Historic Entrances
- Fire Station #2 Renovation
- Fire Station #3 Renovation
- Public Safety Building Emergency Repairs
- Public Safety Building Evaluation
- Historic City Hall Evaluation
- Historic Alhambra Water Tower Restoration
- War Memorial Youth Center Door Replacements
- Granada ProShop Door Replacements
- Salvadore Park Trellis & Shade Shelter Renovation
- Country Club of Coral Gables Multiple Renovations
- Granada ProShop 40-Year Recertification
- Venetian Pool Pump House Roof Replacement



DOUGLAS WOOD ASSOCIATES
Structural Engineers

City of Miami Beach

- Soundscape Park & Exostage
- Wave Maze Sculpture Anchorage
- Historical Normandy Isles Fountain Restoration
- Multi-Purpose Parking Facility Investigation and Repairs
- 7th Street Parking Garage Repairs
- Historical Rod & Reel Club Evaluation
- Eleven City Monuments Evaluation



Village of Biscayne Park

- Historical City Hall Evaluation

City of Doral

- Downtown Doral Park Pavilion

City of North Miami

- Pioneer Blvd. Streetscape Improvements

Village of Bal Harbour

- Lanai Wall Evaluation

Village of Key Biscayne

- Civic Center Park



City of Fort Lauderdale

- Southside School Historic Restoration and Structural Enhancement
- Hardy Park

e. **Douglas Wood Associates** has not been involved in any litigation.

f. **Douglas Wood Associates** has always provided structural engineering services for municipal government projects in South Florida. Work assignments have ranged from the smallest of efforts to the largest of projects. **Douglas Wood Associates** has held a number of "Continuing Contracts" as a prime and has participated as a subconsultant on numerous others. The firm has also been hired as a prime and as a subconsultant on many projects outside of its "continuing contracts." Mr. Wood and his associates are very experienced in assisting municipal staff in developing a project scope, developing a scope of services and in executing those services.

For these services, **Mr. Wood** will be the principal-in-charge and **Mr. Santiago** and **Mr. Pérez** will be project managers/project engineers. Please review their resumes in the following section of this proposal.

DOUGLAS WOOD ASSOCIATES
Structural Engineers

- g. **Douglas Wood Associates** has **sixteen** full-time associates, all of whom are dedicated to providing high-quality service and technical excellence to our clients. All sixteen of our associates have experience in providing structural engineering services to municipal governments. As principal-in-charge, Mr. Wood will assure that the appropriate level of staffing is provided for each of your projects and he will assure implementation of the firm's quality management program. As project managers/project engineers, Mr. Santiago and Mr. Pérez will assure the progress, quality and timely delivery of our services. Other associates will participate as appropriate to each specific assignment.
- h. Support from City of Hollywood staff will be as desired by the City. The City may provide services as it is qualified and staffed to do. **Douglas Wood Associates** will compliment the City staff.



In our work with many other municipalities, we've found that they often provide:

- Project management,
- Preparation of bid documents and bidding services,
- Project review,
- Coordination with various City agencies and staff,
- City staff and equipment for investigative work, such as laborers, trades people, power tools, boom trucks, etc., as may be appropriate.

Where a project may require services beyond our combined capabilities, the City may turn to other City vendors, or we may hire subconsultants (as approved by the City).

DOUGLAS WOOD ASSOCIATES
Structural Engineers

i. Project Approach

Each assignment under this contract will be unique, our general approach to each, however, will likely be as follows:

- 1) Work with City staff to define the scope of project.
- 2) Work with City staff to establish the project schedule.
- 3) Work with City staff to determine the required services.
- 4) Prepare and submit proposal to City staff for review and approval.
- 5) Conduct investigations and research, such as site observations, material sampling and testing, geotechnical exploration, non-destructive testing, product research and Code research.
- 6) Prepare preliminary designs (conceptual, schematic and design development).
- 7) Review project with City staff at appropriate stages.
- 8) Prepare final design.
- 9) Prepare construction drawings and specifications.
- 10) Estimate probable construction costs.
- 11) Assist City staff with bidding.
- 12) Assist staff and contractor with permitting.
- 13) Provide construction administration services (participation in pre-bid meeting and other construction phase conferences as appropriate, review submittals, respond to RFI's and other contractor issues, monitor project progress, review pay applications, monitor project quality, etc.).
- 14) Observe or inspect structural construction, including Special Inspection and Threshold Building Inspection, as appropriate.
- 15) Prepare punchlists.
- 16) Assist staff with project closeout (including preparation of "as-built" drawings).



DOUGLAS WOOD, P.E., SECB

PRINCIPAL-IN-CHARGE: STRUCTURAL ENGINEERING
AIA MIAMI'S 2011 CONSULTING ENGINEER OF THE YEAR

EXPERIENCE

Mr. Wood has over *thirty-four years of experience* providing structural engineering in South Florida. Mr. Wood's reputation for thoughtful consideration, creative solutions, thorough analysis, detailed design and client-responsive service is unsurpassed.

For his entire thirty-four year career, Mr. Wood has been engineering buildings and facilities for municipalities in South Florida. Mr. Wood's work includes some of South Florida's most complex buildings, including numerous projects at the historic County-owned Vizcaya Museum & Gardens and the new Miami-Dade Fire Rescue Training Facility.

Representative Municipal Projects

- Miami-Dade Fire Rescue Training Facility (County-owned)
- Miami Beach Soundscape Park (City-owned)
- City of Miami Commission Chambers Restoration & Renovations (City-owned)
- Police & Fire Headquarters Repairs, Coral Gables (City-owned)
- West End Park Community Center, Miami (City-owned)
- Wynwood Community Service Center, Miami (County-owned)
- Bryan Park Community Center, Miami (City-owned)
- Haulover Beach Park – Lifeguard Facility, Miami (County-owned)
- Haulover Beach Park – Dockmaster Building, Miami (County-owned)
- MetroZoo Giraffe Feeding Station, Miami (County-owned)
- 911 Regional Data Processing Center Repairs, Miami (County-owned)
- Country Club of Coral Gables Renovations and Additions (City-owned)
- Coral Gables Library, HVAC and Miscellaneous Renovations (City-owned)
- Plantation Parks Department Storage & Maintenance Building (City-owned)
- Alhambra Water Tower Renovation, Coral Gables (City-owned)
- Coral Gables City Hall Emergency Repairs (City-owned)
- Lake Park Town Hall Restoration (City-owned)
- Hampton House Restoration, Miami (County-owned)
- Miracle Theater Restoration, Coral Gables (City-owned)
- Biltmore Hotel Repairs & Renovations, Coral Gables (City-owned)
- Biltmore Hotel Country Club Building Renovation (City-owned)
- Vizcaya Main Building Renovation, Miami (County-owned)
- Vizcaya East & West Gate Lodge Renovation (County-owned)
- Vizcaya Café & Casino Mound Renovation (County-owned)
- Curtiss Mansion Restoration, Miami Springs (City-owned)
- Venetian Pool Deck Renovation, Coral Gables (City-owned)
- Renovations, Multiple Buildings, Greynolds Park (County-owned)
- South Side School Restoration, Fort Lauderdale (City-owned)
- Old Miami High School, Renovation/Relocation, Miami (City-owned)

PROFESSIONAL ASSOCIATIONS

National Council of Structural Engineers Associations	American Concrete Institute
National Society of Professional Engineers	Florida Structural Engineers Association
Florida Engineering Society	(South Florida Chapter Treasurer)
American Institute of Steel Construction	National Trust for Historic Preservation
Dade Heritage Trust	American Institute of Architects (Allied Member)

DOUGLAS WOOD
ASSOCIATES, INC.

STRUCTURAL ENGINEERS



34 Years of Local Experience

Education:

University of Wyoming, BSCE,
with Honors
Peter Kiewit Sons' Company Scholarship

University of Miami B. Arch,
with Honors

Professional Registrations & Certifications:

P.E. in Florida
Special Inspector in Florida
Registered Architect in Florida
Certified by the Structural Engineering
Certification Board
ATC 20|ATC45 Post-Disaster Building
Evaluation
LEED Green Associate

Recent Interviews & Publications:

"Feeling the Squeeze" – *Structural Engineering & Design* magazine,
February, 2011

"Unleashing Intrinsic Motivation and Creativity" – *Florida Engineering Society Journal*, January, 2011

"Prospering Through the Hard Times"
(Interview), *The Zweig Letter*,
October, 2011

ROBERT SANTIAGO, P.E.

PROJECT MANAGER – STRUCTURAL ENGINEERING

EXPERIENCE

Mr. Santiago has over *thirty years of experience* providing structural engineering services. Mr. Santiago's background includes extensive municipal work in the New York City area, one of the most exciting and challenging environments for structural engineering anywhere, where he engineered projects in Manhattan's cast iron district, as well as an award-winning addition below Carnegie Hall and at the Yale Divinity School.

Mr. Santiago's many complex municipal projects include the replacement for the Manhattan terminal for the Staten Island Ferry. ***On a typical weekday, this ferry terminal handles 60,000 passengers.*** In his more than eight years with Douglas Wood Associates, Mr. Santiago has continued to engineer numerous municipal projects, including:

Representative Municipal Projects

- Pérez Art Museum Miami (*County-owned*)
- Marathon Terminal, Staten Island Ferry, New York (*City-owned*)
- Police & Fire Headquarters Repairs, Coral Gables (*City-owned*)
- Miami-Dade Fire Rescue Training Facility (*County-owned*)
- West End Park Community Center, Miami (*City-owned*)
- Wynwood Community Service Center, Miami (*County-owned*)
- Bryan Park Community Center, Miami (*City-owned*)
- Salvadore Park Shade Shelter Renovation, Coral Gables (*City-owned*)
- Country Club of Coral Gables Renovations and Additions (*City-owned*)
- Miami Beach Soundscape Park (*City-owned*)
- Haulover Beach Park – Lifeguard Facility, Miami (*County-owned*)
- Haulover Beach Park – Dockmaster Building, Miami (*County-owned*)
- MetroZoo Giraffe Feeding Station, Miami (*County-owned*)
- 911 Regional Data Processing Center Repairs, Miami (*County-owned*)
- Carnegie Hall Self-Transforming Auditorium, New York (*City-owned*)
- Lake Park Town Hall Restoration (*City-owned*)
- Ward Rooming House Restoration, Miami (*City-owned*)
- Colony Theater Restoration, Miami Beach (*City-owned*)
- Dice House Restoration, Miami (*City-owned*)
- Alhambra Water Tower Renovation, Coral Gables (*City-owned*)
- Coral Gables City Hall Emergency Repairs (*City-owned*)
- Hampton House Restoration, Miami (*County-owned*)
- Miracle Theater Restoration, Coral Gables (*City-owned*)
- Old Miami High School, Renovation/Relocation, Miami (*City-owned*)
- Vizcaya Main Building Renovation, Miami (*County-owned*)
- Vizcaya East & West Gate Lodge Renovation (*County-owned*)
- Curtiss Mansion Restoration, Miami Springs (*City-owned*)
- Venetian Pool Deck Renovation, Coral Gables (*City-owned*)
- Renovations, Multiple Buildings, Greynolds Park (*County-owned*)
- South Side School Restoration, Fort Lauderdale (*City-owned*)

PROFESSIONAL ASSOCIATIONS

National Council of Structural Engineers Associations
American Institute of Steel Construction

American Concrete Institute
Florida Structural Engineers Association

DOUGLAS WOOD
ASSOCIATES, INC.
STRUCTURAL ENGINEERS



30 Years of Experience

Education:

City College of New York, BSCE,
with Honors
Engineering Alumni Award

City College of New York,
Master of Structural
with Honors

Professional Registrations & Certifications:

P.E. in Florida
ATC 20|ATC45 Post-Disaster Building
Evaluation

Recent Firm & Project Awards:

2014 Honor Award of Excellence for Historic
Preservation (UM Art Building), AIA Florida

2014 Honor Award of Excellence for Historic
Preservation (Trinity Cathedral), AIA Florida

2014 Honor Award of Merit for Historic
Preservation (Vizcaya), AIA Florida

2012 Excellence in Structural Engineering
(Soundscape Park), NCSEA

2012 ENR Southeast Top 100 Design
Firms, Engineering News-Record

2011 Consulting Engineer of the Year, AIA
Miami

2012, 2011, 2010 & 2009 Best Structural
Engineering Firm to Work For, Structural
Engineer magazine

WWW.DOUGLASWOOD.BIZ

Page 30 of 39

2100 PONCE DE LEON BOULEVARD, SUITE 1020, CORAL GABLES, FLORIDA 33134, T: (305) 461 – 3450 F: (305) 461 – 3650

AFFIRMATIVE ACTION / EQUAL OPPORTUNITY EMPLOYER

EB 6353

MARCOS PEREZ, P.E.

PROJECT MANAGER/ENGINEER | VICE PRESIDENT

EXPERIENCE

Mr. Pérez has *twelve years of experience* providing structural engineering in South Florida. In his time at Douglas Wood Associates, Mr. Pérez has worked on numerous complex projects, including the award winning Soundscape and Exostage Park in Miami Beach, the proposed sculpture-pavilion for Downtown Doral Park, and the Pérez Art Museum Miami.

Representative Municipal Projects

- Pérez Art Museum Miami (*County-owned*)
- Miami-Dade Fire Rescue Training Facility (*County-owned*)
- Soundscape Park & ExoStage (*City-owned*)
- West End Park Community Center, Miami (*City-owned*)
- Wynwood Community Service Center, Miami (*County-owned*)
- Bryan Park Community Center, Miami (*City-owned*)
- Haulover Beach Park – Lifeguard Facility, Miami (*County-owned*)
- Hampton House Restoration, Miami (*County-owned*)
- Vizcaya Main Building Renovation, Miami (*County-owned*)
- Vizcaya East & West Gate Lodge Renovation (*County-owned*)
- Vizcaya Café & Casino Mound Renovation (*County-owned*)
- Curtiss Mansion Restoration, Miami Springs (*City-owned*)
- Venetian Pool Deck Renovation, Coral Gables (*City-owned*)
- Renovations, Multiple Buildings, Greynolds Park (*County-owned*)
- South Side School Restoration, Fort Lauderdale (*City-owned*)



Mr. Pérez also excels in computer applications for structural engineering, and he is expertly adept in the use of complex finite element analysis programs, such as ETABS and SAFE. He has even written a number of structural design programs which have proved to be accurate, reliable and efficient design tools for the firm.

Mr. Pérez has successfully performed project duties from conceptual design and feasibility studies through analysis and design, preparation of construction documents, construction administration and –inspection.

Mr. Pérez also possesses the ability to communicate clearly, coordinate and organize. These qualities have serviced him in his successful project management efforts.

DOUGLAS WOOD
ASSOCIATES, INC.
STRUCTURAL ENGINEERS

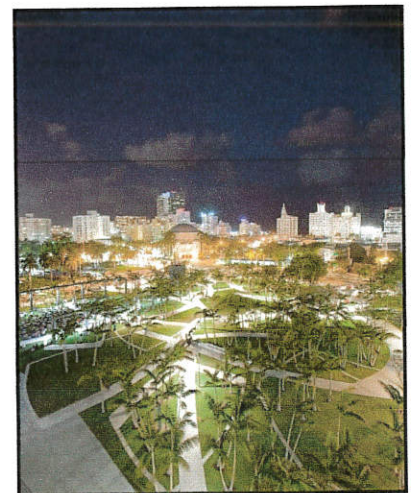


12 Years of *Local* Experience

University of Florida, MSCE, with Honors

University of Miami BSCE, with Honors,
Honors Transfer Program Scholarship

P.E. in Florida



DOUGLAS WOOD ASSOCIATES, INC.
Structural Engineers

State of Florida
Board of Professional Engineers
Attests that
Douglas Scott Wood

Is licensed as a Professional Engineer under Chapter 471, Florida Statutes
Expiration: 2/28/2015
Audit No: 228201520613

Special Inspector

P.E. Lic. No: 32092
SI Lic. No: 417

State of Florida
Board of Professional Engineers
Attests that
Roberto Santiago, P.E.

Is licensed as a Professional Engineer under Chapter 471, Florida Statutes
Expiration: 2/28/2015
Audit No: 228201523286

P.E. Lic. No: 63248

State of Florida
Board of Professional Engineers
Attests that
Marcos R. Perez, P.E.

Is licensed as a Professional Engineer under Chapter 471, Florida Statutes
Expiration: 2/28/2015
Audit No: 228201529141

P.E. Lic. No: 67422

State of Florida
Board of Professional Engineers
Attests that
Douglas Wood & Associates, Inc.

is authorized under the provisions of Section 471.023, Florida Statutes, to offer engineering services to the public through a Professional Engineer, duly licensed under Chapter 471, Florida Statutes.
Expiration: 2/28/2015
Audit No: 228201501171

Certificate of Authorization

CA Lic. No: 6353

DOUGLAS WOOD ASSOCIATES, INC.
Structural Engineers

***State of Florida
Department of State***

I certify from the records of this office that DOUGLAS WOOD ASSOCIATES, INC. is a corporation organized under the laws of the State of Florida, filed on July 13, 1992, effective July 10, 1992.

The document number of this corporation is V50137.

I further certify that said corporation has paid all fees due this office through December 31, 2014, that its most recent annual report/uniform business report was filed on March 11, 2014, and its status is active.

I further certify that said corporation has not filed Articles of Dissolution.

*Given under my hand and the
Great Seal of the State of Florida
at Tallahassee, the Capital, this
the Eleventh day of March, 2014*



Ken Detjen
Secretary of State

Authentication ID: CC0741107702

To authenticate this certificate, visit the following site, enter this ID, and then follow the instructions displayed.

<https://efile.sunbiz.org/certauthver.html>

DOUGLAS WOOD ASSOCIATES, INC.
Structural Engineers

Client#: 1055483

DOUGLW001

ACORD™

CERTIFICATE OF LIABILITY INSURANCE

DATE (MM/DD/YYYY)

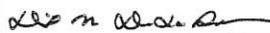
5/15/2014

THIS CERTIFICATE IS ISSUED AS A MATTER OF INFORMATION ONLY AND CONFERS NO RIGHTS UPON THE CERTIFICATE HOLDER. THIS CERTIFICATE DOES NOT AFFIRMATIVELY OR NEGATIVELY AMEND, EXTEND OR ALTER THE COVERAGE AFFORDED BY THE POLICIES BELOW. THIS CERTIFICATE OF INSURANCE DOES NOT CONSTITUTE A CONTRACT BETWEEN THE ISSUING INSURER(S), AUTHORIZED REPRESENTATIVE OR PRODUCER, AND THE CERTIFICATE HOLDER.

IMPORTANT: If the certificate holder is an ADDITIONAL INSURED, the policy(ies) must be endorsed. If SUBROGATION IS WAIVED, subject to the terms and conditions of the policy, certain policies may require an endorsement. A statement on this certificate does not confer rights to the certificate holder in lieu of such endorsement(s).

PRODUCER USI Insurance Services, LLC 1715 N. Westshore Blvd. Suite 700 Tampa, FL 33607	CONTACT NAME: PHONE (A/C, No, Ext): 813 321-7500 FAX (A/C, No): 813 321-7525 E-MAIL ADDRESS: INSURER(S) AFFORDING COVERAGE INSURER A : Travelers Casualty & Surety Co 19038 INSURER B : Liberty Insurance Underwriters 19917 INSURER C : INSURER D : INSURER E : INSURER F :
INSURED Douglas Wood Associates, Inc. 2100 Ponce de Leon Boulevard Ste 1020 Coral Gables, FL 33134	NAIC #

COVERAGES		CERTIFICATE NUMBER:		REVISION NUMBER:		
THIS IS TO CERTIFY THAT THE POLICIES OF INSURANCE LISTED BELOW HAVE BEEN ISSUED TO THE INSURED NAMED ABOVE FOR THE POLICY PERIOD INDICATED. NOTWITHSTANDING ANY REQUIREMENT, TERM OR CONDITION OF ANY CONTRACT OR OTHER DOCUMENT WITH RESPECT TO WHICH THIS CERTIFICATE MAY BE ISSUED OR MAY PERTAIN. THE INSURANCE AFFORDED BY THE POLICIES DESCRIBED HEREIN IS SUBJECT TO ALL THE TERMS, EXCLUSIONS AND CONDITIONS OF SUCH POLICIES. LIMITS SHOWN MAY HAVE BEEN REDUCED BY PAID CLAIMS.						
INSR LTR	TYPE OF INSURANCE	ADDL SUBR INSR WVD	POLICY NUMBER	POLICY EFF (MM/DD/YYYY)	POLICY EXP (MM/DD/YYYY)	LIMITS
	GENERAL LIABILITY					EACH OCCURRENCE \$
	COMMERCIAL GENERAL LIABILITY					DAMAGE TO RENTED PREMISES (Ea occurrence) \$
	CLAIMS-MADE <input type="checkbox"/> OCCUR <input type="checkbox"/>					MED EXP (Any one person) \$
						PERSONAL & ADV INJURY \$
						GENERAL AGGREGATE \$
						PRODUCTS - COM/OP AGG \$
	GEN'L AGGREGATE LIMIT APPLIES PER:					\$
	POLICY <input type="checkbox"/> PRO- JECOT <input type="checkbox"/> LOC <input type="checkbox"/>					\$
	AUTOMOBILE LIABILITY					COMBINED SINGLE LIMIT (Ea accident) \$
	ANY AUTO					BODILY INJURY (Per person) \$
	ALL OWNED AUTOS					BODILY INJURY (Per accident) \$
	SCHEDULED AUTOS					PROPERTY DAMAGE (Per accident) \$
	HIRED AUTOS					\$
	UMBRELLA LIAB					EACH OCCURRENCE \$
	EXCESS LIAB					AGGREGATE \$
	DED <input type="checkbox"/> RETENTION \$					\$
A	WORKERS COMPENSATION AND EMPLOYERS' LIABILITY	X	UB4116T652	08/15/2013	08/15/2014	WC STATU- TORY LIMITS <input checked="" type="checkbox"/> OTH- ER <input type="checkbox"/>
	ANY PROPRIETOR/PARTNER/EXECUTIVE/OFFICER/MEMBER EXCLUDED? (Mandatory in NH)	Y <input type="checkbox"/> N <input checked="" type="checkbox"/> A				E.L. EACH ACCIDENT \$500,000
	If yes, describe under DESCRIPTION OF OPERATIONS below					E.L. DISEASE - EA EMPLOYEE \$500,000
B	Professional Liability		AEA1008810002	08/23/2013	08/23/2014	E.L. DISEASE - POLICY LIMIT \$500,000
						\$2,000,000 per claim
						\$2,000,000 annl aggr.
DESCRIPTION OF OPERATIONS / LOCATIONS / VEHICLES (Attach ACORD 101, Additional Remarks Schedule, if more space is required)						
Professional Liability coverage is written on a claims-made basis.						
Workers Compensation includes a Waiver of Subrogation in favor of Mesquite Productions Inc. as required by written contract.						

CERTIFICATE HOLDER	CANCELLATION
SAMPLE	SHOULD ANY OF THE ABOVE DESCRIBED POLICIES BE CANCELLED BEFORE THE EXPIRATION DATE THEREOF, NOTICE WILL BE DELIVERED IN ACCORDANCE WITH THE POLICY PROVISIONS.
	AUTHORIZED REPRESENTATIVE 

© 1988-2010 ACORD CORPORATION. All rights reserved.

ACORD 25 (2010/05) 1 of 1
#S12489535/M11884838

The ACORD name and logo are registered marks of ACORD

KEBEW

DOUGLAS WOOD ASSOCIATES, INC.
Structural Engineers

CERTIFICATE OF INSURANCE

This certifies that ☒ STATE FARM FIRE AND CASUALTY COMPANY, Bloomington, Illinois
☐ STATE FARM GENERAL INSURANCE COMPANY, Bloomington, Illinois
☐ STATE FARM FIRE AND CASUALTY COMPANY, Scarborough, Ontario
☐ STATE FARM FLORIDA INSURANCE COMPANY, Winter Haven, Florida
☐ STATE FARM LLOYDS, Dallas, Texas

insures the following policyholder for the coverages indicated below:

Policyholder DOUGLAS WOOD Associates, Inc.
Address of policyholder 2100 PONCE DE LEON BOULEVARD SUITE 1020
Location of operations CORAL GABLES, FL 33134
Description of operations

The policies listed below have been issued to the policyholder for the policy periods shown. The insurance described in these policies is subject to all the terms exclusions, and conditions of those policies. The limits of liability shown may have been reduced by any paid claims.

POLICY NUMBER	TYPE OF INSURANCE	POLICY PERIOD		LIMITS OF LIABILITY (at beginning of policy period)
		Effective Date	Expiration Date	
98-BE-W298-9 B	Comprehensive Business Liability	12-21-13	12/21/14	BODILY INJURY AND PROPERTY DAMAGE
This insurance includes:		<input type="checkbox"/> Products - Completed Operations <input checked="" type="checkbox"/> Contractual Liability <input checked="" type="checkbox"/> Underground Hazard Coverage <input checked="" type="checkbox"/> Personal Injury <input checked="" type="checkbox"/> Advertising Injury <input checked="" type="checkbox"/> Explosion Hazard Coverage <input checked="" type="checkbox"/> Collapse Hazard Coverage <input checked="" type="checkbox"/> NON-OWNED/HIRED AUTO LIABILITY <input type="checkbox"/>		Each Occurrence \$ 1000000 General Aggregate \$ 2000000 Products - Completed Operations Aggregate \$ 2000000
98-BE-W691-3 B	EXCESS LIABILITY	POLICY PERIOD		BODILY INJURY AND PROPERTY DAMAGE (Combined Single Limit)
	<input checked="" type="checkbox"/> Umbrella <input type="checkbox"/> Other	Effective Date	Expiration Date	
		07/11/13	07/11/14	Each Occurrence \$ 5000000 Aggregate \$
	Workers' Compensation and Employers Liability			Part 1 STATUTORY Part 2 BODILY INJURY Each Accident \$ Disease - Each Employee \$ Disease - Policy Limit \$
POLICY NUMBER	TYPE OF INSURANCE	POLICY PERIOD		LIMITS OF LIABILITY (at beginning of policy period)
		Effective Date	Expiration Date	

THE CERTIFICATE OF INSURANCE IS NOT A CONTRACT OF INSURANCE AND NEITHER AFFIRMATIVELY NOR NEGATIVELY AMENDS, EXTENDS OR ALTERS THE COVERAGE APPROVED BY ANY POLICY DESCRIBED HEREIN.

If any of the described policies are canceled before its expiration date, State Farm will try to mail a written notice to the certificate holder 30 days before cancellation. If however, we fail to mail such notice, no obligation or liability will be imposed on State Farm or its agents or representatives.

Name and Address of Certificate Holder

SAMPLE

558-994 a.4 11-12-2002 Printed in U.S.A.

Signature of Authorized Representative
PEDRO GARCES CSR .05/09/2014
Title Date
Agent's Code Stamp
AFO Code 6590



Submit Proposals To:
City of Hollywood
2600 Hollywood Boulevard
Hollywood, Florida 33020
Office of City Clerk, Room 221

CITY OF HOLLYWOOD, FLORIDA

REQUEST FOR QUALIFICATIONS

PROPOSER ACKNOWLEDGMENT

RFQ Title: Continuing Contract for Structural Engineering Services (PW 14-009)

RFQ No.: 4421-14-RD

Service Required: as above

Proposals must be received prior to 3:00 P.M. May 30, 2014 and may not be withdrawn within 90 calendar days after such date and time. Proposals received by the date and time specified will be opened in Room 303. All Proposals received after the specified date and time will be returned unopened.

Procurement Services Contact: Ralph Dierks, or Linda Silvey, or Joel Wasserman or his designee

Telephone No.: (954) 921-3223 or (954) 921-3200 or (954) 921-3290

PROPOSER ACKNOWLEDGMENT

THIS FORM MUST BE COMPLETED AND SUBMITTED PRIOR TO THE DATE AND THE TIME OF PROPOSAL OPENING. THE PROPOSAL SUMMARY SHEET PAGES ON WHICH THE PROPOSER ACTUALLY SUBMITS A PROPOSAL AND ANY PAGES UPON WHICH INFORMATION IS REQUIRED MUST BE COMPLETED AND ATTACHED WITH THE PROPOSAL.

Proposer's Name: Douglas Wood Associates, Inc.	Fed. ID No. or SS Number 65-0343713
Complete Mailing Address: 2100 Ponce de Leon Boulevard, Suite 1020 Coral Gables, Florida 33134	Telephone No.: (305) 461-3450 ext. 302
	Fax No.: (305) 461-3650
Do You Have a Permanent Office Located in the City of Hollywood? Yes <input type="checkbox"/> No <input checked="" type="checkbox"/>	E-Mail Address: inbox@douglaswood.biz
Indicate type of organization below: Corporation <input checked="" type="checkbox"/> Partnership <input type="checkbox"/> Individual <input type="checkbox"/> Other	

ATTENTION: FAILURE TO SIGN (PREFERABLY IN BLUE INK) OR COMPLETE ALL RFP SUBMITTAL FORMS AND FAILURE TO SUBMIT ALL PAGES OF THE RFP DOCUMENT AND ANY ADDENDUMS ISSUED MAY RENDER YOUR RFP NON-RESPONSIVE.

THE PROPOSER CERTIFIES THAT THIS PROPOSAL IS BASED UPON ALL CONDITIONS AS LISTED IN THE PROPOSAL DOCUMENTS AND THAT HE/SHE HAS MADE NO CHANGES IN THE PROPOSAL DOCUMENT AS RECEIVED. HE FURTHER PROPOSES AND AGREES, IF HIS/HER PROPOSAL IS ACCEPTED, HE/SHE WILL EXECUTE AN APPROPRIATE AGREEMENT FOR THE PURPOSE OF ESTABLISHING A FORMAL CONTRACTUAL RELATIONSHIP BETWEEN HIM/HER AND THE CITY OF HOLLYWOOD, FLORIDA, FOR THE PERFORMANCE OF ALL REQUIREMENTS TO WHICH THIS PROPOSAL PERTAINS.

Douglas Wood, P.E., SECB
 Authorized Name (Type or Print)

President
 Title

May 27, 2014

Authorized Signature



City of Hollywood, Florida

PROCUREMENT SERVICES RM. 303
P. O. BOX 229045 ZIP 33022-9045

NOTICE TO PROPOSERS

NOTICE IS HEREBY GIVEN, that the City Commission of the City of Hollywood, Florida is advertising for Sealed Request for Qualifications, which will be received by the City Clerk of the City of Hollywood, Florida until **3:00 P.M., May 30, 2014**, at which time they will be opened and publicly read in the Procurement Services Division, Room 303, City Hall, 2600 Hollywood Boulevard, Hollywood, Florida. FOR: **Continuing Contract for Structural Engineering Services (PW 14-009)**

RFQ NO. 4421-14-RD
ADDENDUM NO. 1

Please make the following changes (additions, deletions or corrections) in the above named RFQ.

Questions submitted in regards to the above RFP and corresponding answers:

Q1: We have the following questions/clarifications in regards to the RFQ referenced above: Page 5 – 2nd bullet: "Perform all field tests, laboratory test and collect....
Question: what type of testing? Load tests, test pits, magnetic scanning, etc.
OR Geotechnical studies

A1: **CLARIFICATION:**

Any testing to be done would be determined on a project by project basis. If any required testing cannot be done by the Structural Consultant then the City would order the testing directly from other Testing Services".

Q2: Page 11 Top of page states "Eight (8) Copies..." however the Page 16 checklist states 1 Original and 10 copies – Please clarify.

A2: **Page 16 is correct: please submit one (1) original and ten (10) copies of entire proposal with addendums.**

All other specifications, terms & conditions remain the same.

MAILED RFQ'S

If you have already submitted your printed Request for Qualifications, it will be retained in the City Clerk's Office until the Proposal opening time and date. If you wish to pick up your RFQ that has already been submitted, you can do so by showing proper identification, in the Office of the City Clerk, 2600 Hollywood Blvd, Room 221, Hollywood, Florida 33020.

Please sign and return with your RFQ.

COMPANY NAME: Douglas Wood Associates, Inc.

PROPOSER'S SIGNATURE Douglas Wood, P.E., SECB, President

Dated this 20th day of May 2014

of this Contract, or find the Consultant in default and terminate this Contract.

- E. Said insurance shall be written by a company or companies licensed to do business in the State of Florida and rated no less than A+ in the latest edition of "Best's Key Rating Guide," published by A.M. Best Company.
- F. Recognizing that the work governed by this contract involves the furnishing of advice or services of a professional nature, the Contractor shall purchase and maintain, throughout the life of the contract, **Professional Liability Insurance** which will respond to damages resulting from any claim arising out of the performance of professional services or any error or omission of the Contractor arising out of work governed by this contract.

The minimum limits of liability shall be:
\$250,000 per occurrence/\$500,000 Aggregate

HOLD HARMLESS AND INDEMNITY CLAUSE:

Douglas Wood Associates, Inc., Douglas Wood, P.E., SECB, President

(Company Name and Authorized Signature, Print Name)

,the contractor shall indemnify, defend and hold harmless the City of Hollywood, its elected and appointed officials, employees and agents for any and all suits, actions, legal or administrative proceedings, claims, damage, liabilities, interest, attorney's fees, costs of any kind whether arising prior to the start of activities or following the completion or acceptance and in any manner directly or indirectly caused, occasioned or contributed to in whole or in part by reason of any act, error or omission, fault or negligence whether active or passive by the contractor, or anyone acting under its direction, control, or on its behalf in connection with or incident to its performance of the contract.

Douglas Wood Associates, Inc., Douglas Wood, P.E., SECB, President

(Company Name and Authorized Signature, Print Name)

further certifies that it will meet all insurance requirements of the City of Hollywood and agrees to produce valid, timely certificates of coverage.

XVII. TRUTH-IN-NEGOTIATION CERTIFICATE:

Signature of this Contract by Consultant shall act as the execution of a truth-in-negotiation certificate stating that wage rates and other unit costs supporting the compensation of this Contract are accurate, complete, and current at the time of contracting. The original contract price and any additions thereto shall be adjusted to exclude any significant sums by which the City determines the contract price was increased due to inaccurate, incomplete, or non-current wage rates and other unit costs. All such contract adjustments shall be made within one (1) year following the end of this Contract.

RFQ CHECKLIST

Please check each line item after the completion of the appropriate item.

- X I verify that the signature on page number one (1) is the signature of the person authorized to bind the agreement. (Preferably in blue ink)
- X I acknowledge reading and signing the Hold Harmless Statement.
- X I have included all information, certificates, licenses and additional documentation as required by the City in this RFQ document.
- X I have checked for any addendums to this RFQ, and will continue to check for any addendums up to the due date and time of this RFQ.
- X I have submitted one (1) original and ten (10) copies of the entire proposal with addendums.
- X I have verified that the outside address label of my RFQ package is clearly marked to include my company's name, address, RFQ number and date of RFQ opening.
- X I have read and completed (if applicable) the "Disclosure of Conflict of Interest".

NAME OF COMPANY: Douglas Wood Associates, Inc.

PROPOSER'S NAME: Douglas Wood, P.E., SECB, President

PROPOSER'S AUTHORIZED SIGNATURE: 

DATE: May 27, 2014