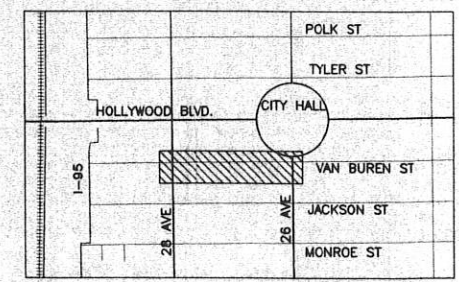


BROWARD COUNTY
Traffic Engineering Division

APPROVED

By: *John Patton*
Date: 4/22/2016
Remarks: *NO INFORMATION OF PUBLIC CONCERN IS WANTED*

Approval is for Pavement Markings and Signing only and is limited to work in public rights-of-way and driveway connections thereto.

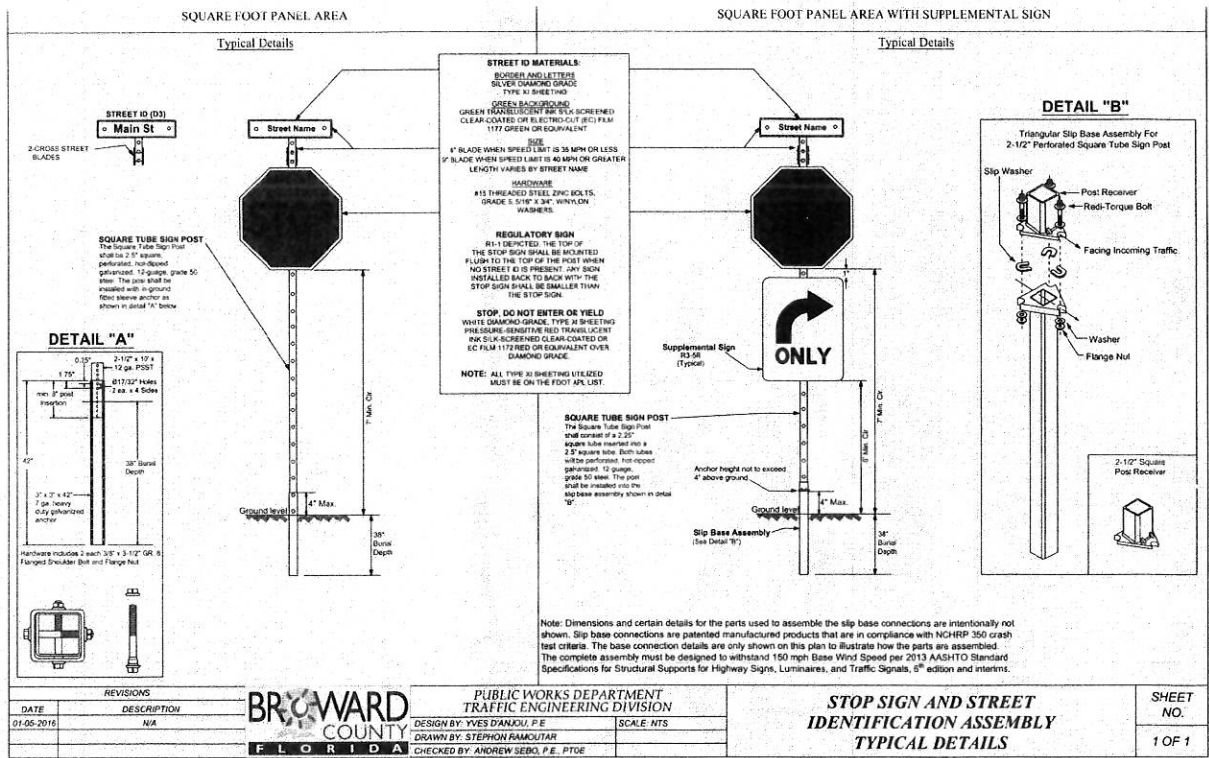


- NOTES:
- EXISTING MARKING SHALL BE REMOVED BY SAND BLASTING OR OR WATER BLASTING ONLY.
 - ALL EXISTING WESTBOUND SIGNS NOT SHOWN ON THIS PLANS SHALL BE REINSTALLED SO THEY ARE VISIBLE TO EASTBOUND TRAFFIC.
 - THE DECISION AND AUTHORITY TO CONVERT VAN BUREN STREET TO A ONE WAY EASTBOUND OPERATION IS A LOCAL PLANNING DECISION THAT IS SOLELY UNDER THE JURISDICTION, AND ENGINEERING DISCRETION OF THE CITY OF HOLLYWOOD.
 - BROWARD COUNTY'S RESPONSIBILITY IN THIS PROJECT IS LIMITED TO APPROVAL OF THE SIGNING AND PAVEMENT MARKING PLAN, ACCEPTANCE AND OPERATION OF THE APPROVED TRAFFIC CONTROL DEVICES, AND ANY SIGNAL TIMING ADJUSTMENTS REQUIRED AT THE INTERSECTION OF VAN BUREN STREET AND S 26 AVENUE TO ACCOMMODATE THE ONE WAY CONVERSION. THE COUNTY'S RESPONSIBILITIES EXCLUDE THE DECISION AND AUTHORITY TO CONVERT VAN BUREN STREET TO A ONE-WAY EASTBOUND OPERATION.

CLARENCE M. IP
No. 00726
12/16
FLORIDA
PROFESSIONAL ENGINEER
SEAL

VAN BUREN STREET FROM S 28th AVE. SCALE 1" = 20'

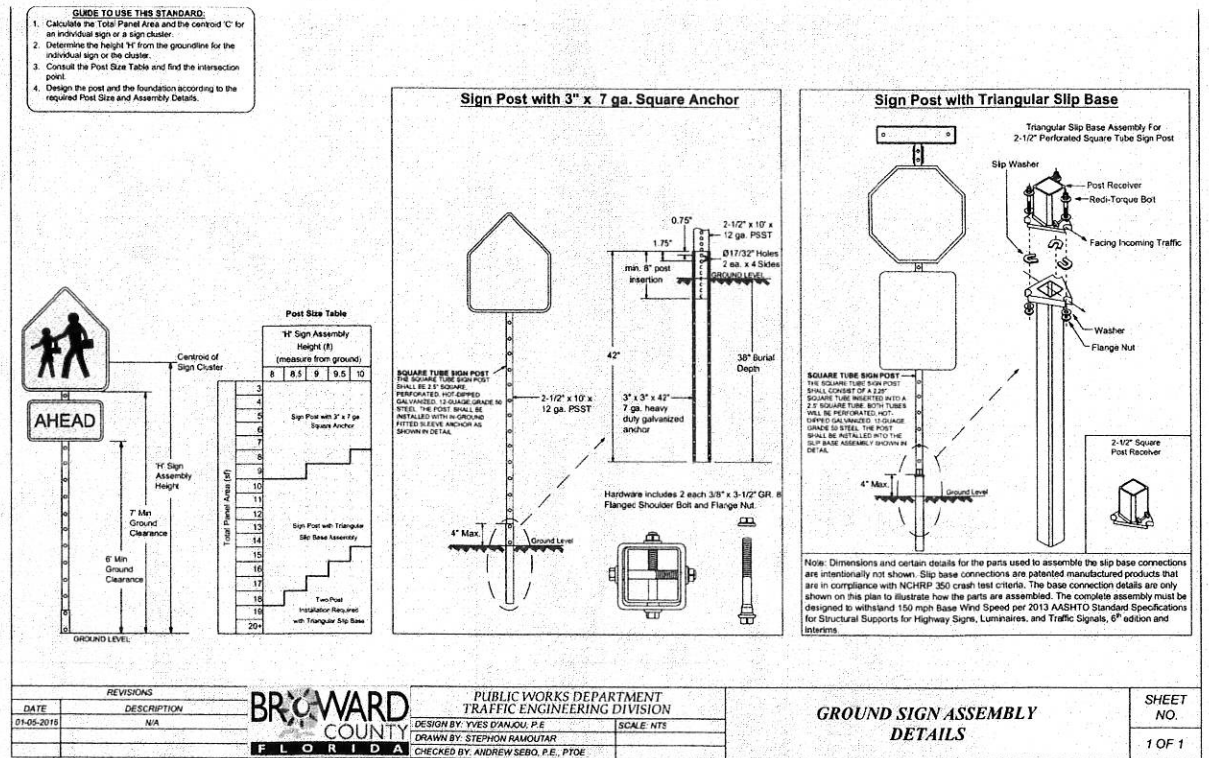
City of Hollywood, Florida



DATE	DESCRIPTION	DESIGN BY	SCALE	SHEET NO.
01-05-2016	N/A	YVES DANJOU, P.E.	N/A	1 OF 1

BROWARD COUNTY PUBLIC WORKS DEPARTMENT TRAFFIC ENGINEERING DIVISION
 DRAWN BY: STEPHON RAMOUTAR
 CHECKED BY: ANDREW SEBO, P.E., PTCE

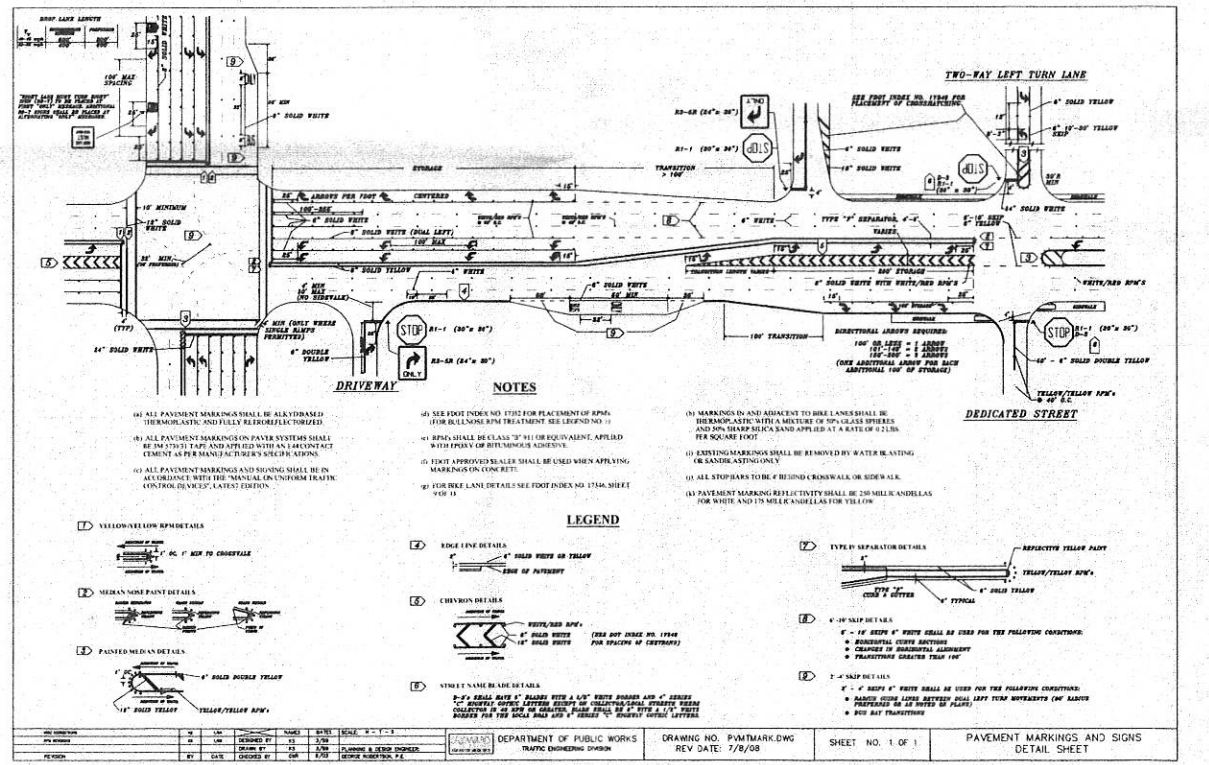
STOP SIGN AND STREET IDENTIFICATION ASSEMBLY TYPICAL DETAILS



DATE	DESCRIPTION	DESIGN BY	SCALE	SHEET NO.
01-05-2016	N/A	YVES DANJOU, P.E.	N/A	1 OF 1

BROWARD COUNTY PUBLIC WORKS DEPARTMENT TRAFFIC ENGINEERING DIVISION
 DRAWN BY: STEPHON RAMOUTAR
 CHECKED BY: ANDREW SEBO, P.E., PTCE

GROUND SIGN ASSEMBLY DETAILS



DATE	DESCRIPTION	DESIGN BY	SCALE	SHEET NO.
01-05-2016	N/A	YVES DANJOU, P.E.	N/A	1 OF 1

BROWARD COUNTY PUBLIC WORKS DEPARTMENT TRAFFIC ENGINEERING DIVISION
 DRAWING NO. PVM/TKM/DWG
 REV DATE: 7/8/08

PAVEMENT MARKINGS AND SIGNS DETAIL SHEET

BROWARD COUNTY
 PUBLIC WORKS DEPARTMENT TRAFFIC ENGINEERING DIVISION
 2300 W. Commercial Boulevard • Fort Lauderdale, Florida 33309 • 954-847-2600 • FAX 954-847-2700

Our Best
 BROWARD COUNTY
 Nothing But the Best

MAINTENANCE OF TRAFFIC - SCHOOL/PEDESTRIAN

The Maintenance of Traffic plan, provided by the Contractor, shall include provisions for pedestrian and/or school student traffic as well as vehicular traffic. The following are minimum requirements:

- The safe walk route for all school students within the vicinity of the construction zone shall be maintained during student arrival and dismissal times. If the current walking surface cannot be maintained, then a temporary walkable surface shall be created. The safe walk route shall be separated from the construction activity during the entire length of the project encompassing the entire walk route with proper pedestrian openings at designated crossings in compliance with FDOT Design Standards Index No. 800 as well as meeting all ADA requirements.
- All construction equipment activity around any designated crosswalk shall cease to operate during the student arrival and dismissal times. All construction equipment activity adjacent to a designated walk route shall cease operating unless satisfactorily barricaded from the walk route.
- In the case that a designated crossing or any portion of the designated walk route cannot be maintained, the Contractor shall notify the Special Projects Coordinator at Broward County Traffic Engineering Division, (954) 847-2600, a minimum of ten (10) working days prior to closing that route in order to establish an alternate crossing/route.
- It shall be the Contractor's responsibility to install any necessary pavement, road rock, pavement markings and signage and/or any pedestrian signalization and/or signal modification to accommodate an existing or alternate walk route throughout the entire length of the project.
- It shall be the Contractor's responsibility to provide State Certified School Crossing Guards or Off Duty Police Officers to cross students at all locations other than those previously designated. The Contractor may use Flagmen, but ONLY if they are State Certified as a School Crossing Guard.
- Thirty (30) days prior to the beginning of construction the Contractor shall notify the Special Projects Coordinator at Broward County Traffic Engineering Division, (954) 847-2600 or at browardtraffic@fla.gov to discuss all necessary safety measures.
- It shall be the Contractor's responsibility to notify the following Broward County School Board Pupil Transportation Department personnel if construction will impact any bus routes:
 - Ruth Masters Routing (754) 321-4400 Ext. # 2309 ruth.masters@browardschools.com
 - Vincent Harrell Student Transportation & Fleet Service (754) 321-4472 vincent.harrell@browardschools.com
 - Mary Tochenmann Student Transportation & Fleet Service (754) 321-4400 Ext. # 2006 mary.tochenmann@browardschools.com

Upon coordination with the aforementioned personnel, and if deemed necessary, a pre-construction meeting will be held to determine all bus routes and to make any necessary arrangements for rerouting. The Special Projects Coordinator from the Broward County Traffic Engineering Division, (954) 847-2600, will be notified and may attend the pre-construction meeting.

- The Contractor shall be responsible for obtaining an approved Maintenance of Traffic Plan (MOT), specifying the above school/pedestrian conditions, through the Broward County Traffic Engineering Division or the Local Municipality, depending on the roadway jurisdiction. The conditions outlined in the MOT are fully effective as part of the proposed improvements. The Contractor shall be responsible for ensuring that all work associated with the project is in compliance with all the requirements of the approved MOT.
- The Contractor shall ensure that there are NO speed limit signs installed within the designated reduced speed school zone at any time throughout the project.

GENERAL NOTES:

- ALL MATERIALS AND CONSTRUCTION SHALL BE IN ACCORDANCE WITH BROWARD COUNTY ENGINEERING DIVISION'S "MINIMUM STANDARDS". THE SECTIONS REFERENCED TO ARE PER FLORIDA DEPARTMENT OF TRANSPORTATION (F.D.O.T.) "STANDARD SPECIFICATIONS FOR ROAD AND BRIDGE CONSTRUCTION", LATEST EDITION AND REVISIONS THERETO.
- SIGN ASSEMBLY LOCATIONS SHOWN ON PLANS WHICH ARE IN CONFLICT WITH LIGHTING, UTILITIES, DRIVEWAYS, WHEELCHAIR RAMPS, ETC. MAY BE ADJUSTED SLIGHTLY AS DIRECTED BY THE ENGINEER. EXTREME LOCATION CHANGES MUST BE APPROVED BY THE ENGINEER.
- PAVEMENT MARKINGS SHALL BE PLACED AS SHOWN IN THE PLANS AND IN ACCORDANCE WITH SECTION 711. REFLECTIVE PAVEMENT MARKERS (RPM) SHALL BE IN ACCORDANCE WITH SECTION 706.
- ALL PAVEMENT MARKINGS SHALL BE THERMOPLASTIC UNLESS OTHERWISE SPECIFIED.
- ALL TRAFFIC DEVICES DAMAGED DURING CONSTRUCTION, SHALL BE RESTORED TO BROWARD COUNTY TRAFFIC ENGINEERING STANDARDS (CURRENT EDITION).
- CONTRACTOR TO PROVIDE TEMPORARY PAINT FOR THE 1st 3 WEEKS AFTER THE PLACEMENT OF ASPHALT.
- ALL EXISTING SIGNS NOT LABELED ON PLANS ARE TO REMAIN AND/OR TO BE ALIGNED TO NEW TRAFFIC PATTERN.
- ALL PAVEMENT MARKINGS AND SIGNS SHALL CONFORM WITH THE STANDARDS IN THE "MANUAL ON UNIFORM TRAFFIC CONTROL DEVICES" (M.U.T.C.D.), FEDERAL HIGHWAY ADMINISTRATION (F.H.W.A.) AND BROWARD COUNTY TRAFFIC ENGINEERING (B.C.T.E.) STANDARDS (MAY 1989).
- ALL PAVEMENT MARKINGS, REFLECTIVE PAVEMENT MARKERS (RPM) AND SIGNS DAMAGED DURING CONSTRUCTION SHALL BE REPLACED BY THE CONTRACTOR.
- THE CONTRACTOR SHALL REPLACE ALL MISSING REFLECTIVE PAVEMENT MARKERS (RPM) AND REFURBISH ALL MARKINGS, AS DIRECTED BY THE ENGINEER, AT THE TIME OF CONSTRUCTION.
- ALL SIGNS SHALL BE INSTALLED ON SQUARE TUBE TYPE POSTS, PER CITY OF HOLLYWOOD AND B.C.T.E. STANDARDS.
- ALL SIGN PANEL DETAILS SHALL BE IN ACCORDANCE WITH THE M.U.T.C.D.
- ALL SIGNS SHALL USE TYPE XI SHEETING.

NOTES:

- THE DECISION AND AUTHORITY TO CONVERT VAN BUREN STREET TO A ONE WAY EASTBOUND OPERATION IS A LOCAL PLANNING DECISION THAT IS SOLELY UNDER THE JURISDICTION, AND ENGINEERING DISCRETION OF THE CITY OF HOLLYWOOD.
- BROWARD COUNTY'S RESPONSIBILITY IN THIS PROJECT IS LIMITED TO APPROVAL OF THE SIGNING AND PAVEMENT MARKING PLAN, ACCEPTANCE AND OPERATION OF THE APPROVED TRAFFIC CONTROL DEVICES, AND ANY SIGNAL TIMING ADJUSTMENTS REQUIRED AT THE INTERSECTION OF VAN BUREN STREET AND S 26 AVENUE TO ACCOMMODATE THE ONE WAY CONVERSION. THE COUNTY'S RESPONSIBILITIES EXCLUDE THE DECISION AND AUTHORITY TO CONVERT VAN BUREN STREET TO A ONE-WAY EASTBOUND OPERATION.

