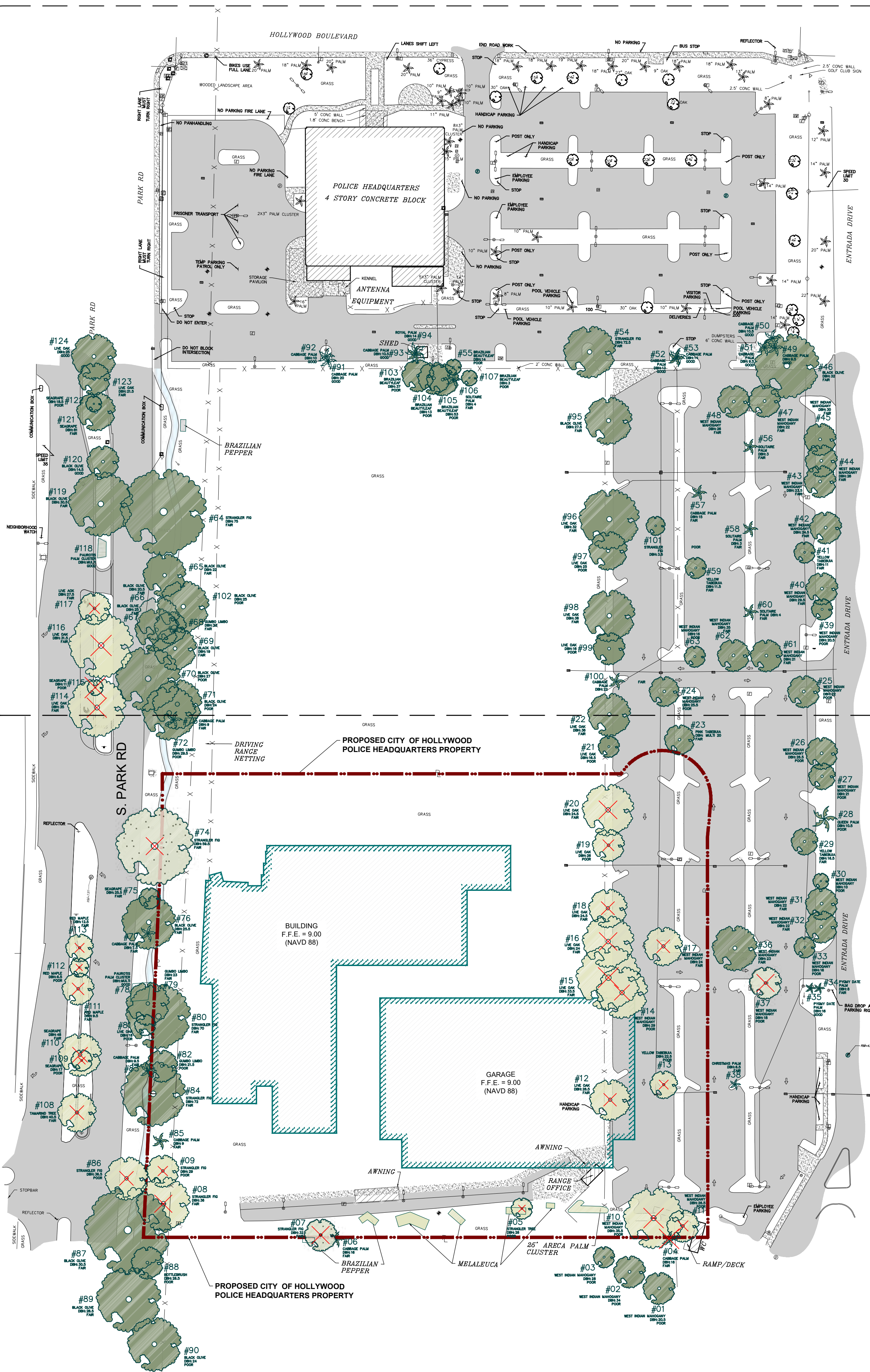


Tree #	Scientific Name	Common Name	DBH - in.	DBH - in.	Height - ft.	Canopy	Condition	Disposition	Mitigation Required
1	Swietenia mahagoni	West Indian mahogany	20.5	16.5	40	30	Poor	To remain	
2	Swietenia mahagoni	West Indian mahogany	multi (28)	10	40	30	Poor	To remain	
3	Sabal palmetto	Sabidge palm	18	19	20	20	Fair	To be removed	Yes
4	Ficus aurea	strangler fig	multi (26)	6	30	20	Poor	To be removed	No Mitigation req.
5	Sabal palmetto	Sabidge palm	18	19	20	20	Fair	To be removed	No Mitigation req.
6	Ficus aurea	strangler fig	multi (26)	17	30	30	Fair	To be removed	No Mitigation req.
7	Ficus aurea	strangler fig	multi (26)	17	30	30	Fair	To be removed	No Mitigation req.
8	Ficus aurea	strangler fig	multi (26)	17	30	30	Fair	To be removed	No Mitigation req.
9	Ficus aurea	strangler fig	multi (26)	17	30	30	Fair	To be removed	No Mitigation req.
10	Swietenia mahagoni	West Indian mahogany	20.5	16.5	40	30	Poor	To be removed	Yes
11	Swietenia mahagoni	West Indian mahogany	multi (26.5)	16.5	35	30	Poor	To be removed	Yes
12	Quercus virginiana	live oak	24	40	30	30	Fair	To be removed	Yes
13	Tabebuia caribaea	pink tabebuia	22.5	20	20	20	Poor	To be removed	Yes
14	Swietenia mahagoni	West Indian mahogany	20.5	16.5	40	30	Poor	To be removed	Yes
15	Quercus virginiana	live oak	33.5	45	60	60	Fair	To be removed	Yes
16	Quercus virginiana	live oak	26	40	30	30	Fair	To be removed	Yes
17	Swietenia mahagoni	West Indian mahogany	20.5	16.5	40	30	Poor	To be removed	Yes
18	Quercus virginiana	live oak	24	40	30	30	Fair	To be removed	Yes
19	Quercus virginiana	live oak	26	35	30	30	Poor	To be removed	Yes
20	Quercus virginiana	live oak	24.5	40	30	30	Poor	To be removed	Yes
21	Quercus virginiana	live oak	16.5	30	20	20	Poor	To remain	
22	Quercus virginiana	live oak	16.5	30	20	20	Poor	To remain	
23	Tabebuia heterophylla	pink tabebuia	multi (20)	10	20	20	Poor	To remain	
24	Swietenia mahagoni	West Indian mahogany	20.5	16.5	40	30	Poor	To remain	
25	Swietenia mahagoni	West Indian mahogany	22	30	30	30	Poor	To remain	
26	Swietenia mahagoni	West Indian mahogany	20.5	16.5	40	30	Poor	To remain	
27	Swietenia mahagoni	West Indian mahogany	21	30	25	25	Poor	To remain	
28	Syngonium podophyllum	angel palm	12.5	10	20	20	Poor	To remain	
29	Tabebuia caribaea	yellow tabebuia	16.5	28	25	25	Fair	To remain	
30	Swietenia mahagoni	West Indian mahogany	20.5	16.5	40	30	Poor	To remain	
31	Swietenia mahagoni	West Indian mahogany	22	30	30	30	Fair	To remain	
32	Swietenia mahagoni	West Indian mahogany	22	30	30	30	Fair	To remain	
33	Swietenia mahagoni	West Indian mahogany	22	30	30	30	Fair	To remain	
34	Phoenix roebelenii	pygmy date palm	8	4	20	20	Poor	To remain	
35	Phoenix roebelenii	pygmy date palm	16	4.5	20	20	Good	To remain	
36	Swietenia mahagoni	West Indian mahogany	22	30	30	30	Fair	To remain	
37	Swietenia mahagoni	West Indian mahogany	22	30	30	30	Fair	To remain	
38	Adonis aestivalis	Kardian palm	8	4	20	20	Poor	To remain	
39	Swietenia mahagoni	West Indian mahogany	20.5	16.5	40	30	Poor	To remain	
40	Swietenia mahagoni	West Indian mahogany	20.5	16.5	40	30	Poor	To remain	
41	Tabebuia caribaea	yellow tabebuia	11	20	20	20	Fair	To remain	
42	Swietenia mahagoni	West Indian mahogany	20.5	16.5	40	30	Poor	To remain	
43	Swietenia mahagoni	West Indian mahogany	21.5	30	30	30	Fair	To remain	
44	Swietenia mahagoni	West Indian mahogany	20.5	16.5	40	30	Poor	To remain	
45	Swietenia mahagoni	West Indian mahogany	30	40	30	30	Fair	To remain	
46	Terminalia bucceras	black olive	22	40	60	60	Fair	To remain	
47	Swietenia mahagoni	West Indian mahogany	22	30	30	30	Fair	To remain	
48	Swietenia mahagoni	West Indian mahogany	22	30	30	30	Fair	To remain	
49	Sabal palmetto	cabbage palm	9.5	20	20	20	Good	To remain	
50	Sabal palmetto	cabbage palm	10.5	20	20	20	Good	To remain	
51	Sabal palmetto	cabbage palm	9.5	22	20	20	Good	To remain	
52	Sabal palmetto	cabbage palm	13	19	20	20	Good	To remain	
53	Sabal palmetto	cabbage palm	14	18	20	20	Good	To remain	
54	Ficus aurea	strangler fig	multi (22.5)	29.5	45	45	Poor	To be removed	No Mitigation req.
55	Calophyllum inophyllum	Brazilian beautyleaf	multi (14)	10	25	15	Poor	To remain	
56	Psychotria elegans	solitaire palm	3	12	20	20	Fair	To remain	
57	Sabal palmetto	cabbage palm	15	5	20	20	Fair	To remain	
58	Psychotria elegans	solitaire palm	3	11	20	20	Fair	To remain	
59	Tabebuia caribaea	yellow tabebuia	11.5	28	20	20	Fair	To remain	
60	Psychotria elegans	solitaire palm	4	12	20	20	Fair	To remain	
61	Swietenia mahagoni	West Indian mahogany	21	35	30	30	Fair	To remain	
62	Swietenia mahagoni	West Indian mahogany	35	40	30	30	Fair	To remain	
63	Swietenia mahagoni	West Indian mahogany	35	40	30	30	Fair	To remain	
64	Ficus aurea	strangler fig	25	30	20	20	Poor	To remain	
65	Terminalia bucceras	black olive	22	60	40	40	Fair	To remain	
66	Terminalia bucceras	black olive	20.5	40	40	40	Fair	To remain	
67	Terminalia bucceras	black olive	25	60	40	40	Fair	To remain	
68	Bursera simaruba	jumbo limbo	23	50	20	20	Poor	To remain	
69	Terminalia bucceras	black olive	19	50	40	40	Fair	To remain	
70	Terminalia bucceras	black olive	27	45	60	60	Poor	To remain	
71	Terminalia bucceras	black olive	24	60	46	46	Poor	To remain	
72	Bursera simaruba	jumbo limbo	23.5	20	50	50	Poor	To remain	
73	Sabal palmetto	cabbage palm	9	25	20	20	Good	To remain	
74	Ficus aurea	strangler fig	59.5	70	70	70	Poor	To be removed	No Mitigation req.
75	Coccoloba uvifera	heagrape	multi (25.5)	7	30	20	Fair	To remain	
76	Terminalia bucceras	black olive	25.5	60	50	50	Fair	To remain	
77	Sabal palmetto	cabbage palm	7.5	30	30	30	Fair	To remain	
78	Acrostichum sp.	bird's nest palm	multi	3	12	20	Fair	To remain	
79	Bursera simaruba	jumbo limbo	23	50	40	40	Fair	To remain	
80	Ficus aurea	strangler fig	30	60	60	60	Fair	To remain	
81	Quercus virginiana	live oak	18	25	20	20	Poor	To remain	
82	Bursera simaruba	jumbo limbo	21.5	50	30	30	Poor	To remain	
83	Sabal palmetto	cabbage palm	9.5	20	20	20	Good	To remain	
84	Ficus aurea	strangler fig	36.5	70	60	60	Fair	To remain	
85	Sabal palmetto	cabbage palm	9	30	30	30	Fair	To remain	
86	Ficus aurea	strangler fig	36.5	40	40	40	Poor	To be removed	No Mitigation req.
87	Terminalia bucceras	black olive	30.5	60	80	80	Fair	To remain	
88	Melaleuca virginiana	portulac	multi (26.5)	19	40	30	Poor	To remain	
89	Terminalia bucceras	black olive	26.5	50	60	60	Fair	To remain	
90	Terminalia bucceras	black olive	26	50	50	50	Poor	To remain	
91	Sabal palmetto	cabbage palm	20	18	20	20	Good	To remain	
92	Sabal palmetto	cabbage palm	19	15	20	20	Good	To remain	
93	Sabal palmetto	cabbage palm	10.5	22	20	20	Good	To remain	
94	Bostrychia regia	key palm	18	18	20	20	Fair	To remain	
95	Terminalia bucceras	black olive	27.5	40	44	44	Fair	To remain	
96	Quercus virginiana	live oak	22	50	50	50	Fair	To remain	
97	Quercus virginiana	live oak	44	30	30	30	Poor	To remain	
98	Quercus virginiana	live oak	44	30	30	30	Poor	To remain	
99	Quercus virginiana	live oak	16	30	30	30	Poor	To remain	
100	Sabal palmetto	cabbage palm	22	16	20	20	Fair	To remain	
101	Ficus aurea	strangler fig	3.5	15	18	18	Poor	To remain	
102	Terminalia bucceras	black olive	28	60	48	48	Poor	To remain	
103	Calophyllum inophyllum	Brazilian beautyleaf	multi (37)	13	30	30	Poor	To remain	
104	Calophyllum inophyllum	Brazilian beautyleaf	multi (33)	6	30	30	Poor	To remain	
105	Calophyllum inophyllum	Brazilian beautyleaf	multi (53)	9	30	30	Poor	To remain	
106	Psychotria elegans	solitaire palm	4	15	20	20	Fair	To remain	
107	Calophyllum inophyllum	Brazilian beautyleaf	multi (40.5)	25	15	15	Poor	To be removed	Yes
108	Terminalia bucceras	black olive	21.5	40	30	30	Fair	To remain	
109	Coccoloba uvifera	heagrape	multi (17)	11	30	20	Poor	To be removed	Yes
110	Coccoloba uvifera	heagrape	multi (48)	16	40	40	Fair	To be removed	Yes
111	Acer rubrum	red maple	9.5	30	30	30	Fair	To be removed	Yes
112	Acer rubrum	red maple	6.5	28	18	18	Poor	To be removed	Yes
113	Acer rubrum	red maple	12.5	30	20	20	Fair	To be removed	Yes
114	Quercus virginiana	live oak	39	50	54	54	Fair	To be removed	Yes
115	Coccoloba uvifera	heagrape	multi (11)	4.5	30	15	Poor	To be removed	Yes
116	Quercus virginiana	live oak	31.5	60	66	66	Fair	To be removed	Yes
117	Quercus virginiana	live oak	27.5	50	30	30	Fair	To be removed	Yes
118	Acrostichum sp.	bird's nest palm	multi	9	12	20	Fair	To remain	
119	Terminalia bucceras	black olive	30.5	60	60	60	Fair	To remain	
120	Terminalia bucceras	black olive	14.5	50	30	30	Fair	To remain	
121	Coccoloba uvifera	heagrape	multi (81)	17	40	36	Fair	To remain	
122	Coccoloba uvifera	heagrape	multi (84.5)	9.5	40	15	Poor	To remain	
123	Quercus virginiana	live oak	21.5	30	30	30	Fair	To remain	
124	Quercus virginiana	live oak	29	40	30	30	Good	To remain	

\* FIG TREES ARE CONSIDERED AN INVASIVE SPECIES IN THE CITY, THEREFORE THEY DO NOT REQUIRE MITIGATION.

## 1 OVERALL SITE PLAN.

1" = 60'-0"



2  
TS-100

3  
TS-101

### TREE MITIGATION CALCULATION

TOTAL TREES TO BE REMOVED: 22 TREES AND 1 PALM TREE.

TREE MITIGATION REQUIRED: 22 TREES = 485.5'

TREES TO REMAIN (CREDIT) = 286 + (102" FROM PROPOSED LIST) = 388"

485.5 - 388 = 97.5'/2 = 49 TREES + 1 PALM TREE REQUIRED.

50 TOTAL REQUIRED X \$350 = \$17,500.00

SEVENTEEN THOUSAND FIVE HUNDRED DOLLARS TO BE PAID TO THE CITY OF HOLLYWOOD TREE TRUST FUND.

### SITE PLAN LEGEND

- PROPERTY LINE
- SETBACKS
- PROPOSED INLET (REFER TO CIVIL DRAWINGS)
- PROPOSED MANHOLE (REFER TO CIVIL DRAWINGS)
- PROPOSED SIGNAGE (REFER TO CIVIL DRAWINGS)
- PROPOSED LIGHT POLES (REFER TO PHOTOMETRIC SITE LIGHTING PLAN)
- PROPOSED BUILDING FOOTPRINT
- FENCE
- CONCRETE
- EXISTING ASPHALT
- PROPOSED ASPHALT
- PROPOSED LANDSCAPE
- PROPOSED CONCRETE
- PROPOSED TREES
- TREE / HEDGE
- EXISTING DECIDUOUS TREE
- EXISTING PALM TREE
- SIGN
- CATCH BASIN
- LIGHT POLES
- UTILITY BOX / PEDESTAL (AS IDENTIFIED)

### TREE SURVEY LEGEND

- EXISTING TREES TO BE REMOVED
- EXISTING TREES TO BE PRESERVED
- PENDING ARBORIST REVIEW FOR FINAL DETERMINATION

CITY OF HOLLYWOOD  
2007 RALEIGH ST  
HOLLYWOOD, FL 33020  
T: 854.921.3435

ARCHITECT OF RECORD

O'DONNELL, DANWOLF AND PARTNERS ARCHITECTS INC.  
2432 HOLLYWOOD BLVD.  
HOLLYWOOD, FL 33020  
T: 854.518.0833

DESIGN & LANDSCAPE ARCHITECT

CANAL HOUSE, 3223 GRACE STREET NW  
WASHINGTON, DC 20007 USA  
T: 202.641.1413

STRUCTURAL ENGINEER

OSBORN ENGINEERING  
15 W. CHURCH STREET - SUITE 201  
ORLANDO, FL 32801-3300  
T: 407.630.6253

MEP/FP ENGINEER

GO ASSOCIATES, INC.  
181 MELODY LANE, SUITE 107  
FORT PIERCE, FL 34949  
T: 772.886.1165

CIVIL ENGINEER

KIRLEY + HORN  
8201 PETERS ROAD, SUITE 200  
PLANTATION, FL 33324  
T: 854.535.5100

ENVIRONMENTAL ENGINEER

LANGAN ENGINEERING AND ENVIRONMENTAL SERVICES, INC.  
110 EAST BROADWAY BOULEVARD, SUITE 107  
FORT LAUDERDALE, FL 33301  
T: 954.320.2100

LIFE SAFETY CONSULTANT

SLS CONSULTING, INC.  
260 PALERMO AVE  
CORAL GABLES, FL 33134  
T: 305.461.9852

RTCC CONSULTANT

WINBOURNE CONSULTING, LLC  
1300 HARRISON ST. SUITE 301  
HOLLYWOOD, FL 33020

FOR PERMITTING USE ONLY

06/14/2023

© 2023 O'DONNELL, DANWOLF AND PARTNERS ARCHITECTS INC. THIS DRAWING, IN BOTH PRINTED AND ELECTRONIC FORM, MAY NOT BE USED, DUPLICATED, MODIFIED OR CHANGED IN ANY MANNER WITHOUT THE WRITTEN CONSENT OF O'DONNELL, DANWOLF AND PARTNERS ARCHITECTS INC. ANY USE, DUPLICATION, MODIFICATION OR CHANGE WILL SUBJECT THE USER AND ITS AGENTS TO LIABILITY OF SUCH ACTS.

ARCHITECTURE AND DESIGN

2432 HOLLYWOOD BLVD., HOLLYWOOD, FL 33020  
T: 854.518.0833 | F: 854.518.0131  
www.odpartners.com

PROJECT

CITY OF HOLLYWOOD  
NEW POLICE HEADQUARTERS

ADDRESS: HOLLYWOOD, FL 33021

REVISIONS

NO	DATE	ISSUANCE DESCRIPTION
1	01/03/2023	PRELIMINARY TAC
2	02/23/2023	FINAL TAC
3	03/23/2023	FINAL TAC
4	06/14/2023	FINAL TAC Revision 1

SCALE: As Indicated  
SHEET SIZE: ARCH D (24"X36") DO NOT SCALE DRAWINGS.  
DATE: 06/14/2023  
STARTED BY: ODP  
DRAWING TITLE:

OVERALL SITE PLAN  
TREE SKETCH

SHEET NO.  
TS-101







