

Exhibit "A"

# ALTA/ACSM LAND TITLE SURVEY

**DESCRIPTION:**

LOTS 10, 11, 12, 13, 14 AND 15, LESS THE WEST 12.81 FEET OF LOTS 11 THROUGH 14, BLOCK 11 OF "HOLLYWOOD BEACH FIRST ADDITION" ACCORDING TO PLAT THEREOF, AS RECORDED IN PLAT BOOK 1, PAGE 31, OF THE PUBLIC RECORDS OF BROWARD COUNTY, FLORIDA.

SAID LAND SITUATED IN THE CITY OF HOLLYWOOD, FLORIDA.

**TITLE SEARCH REPORT:**

ATTORNEYS TITLE FUND SERVICES, LLC  
FUND FILE NO. 10-2014-130472

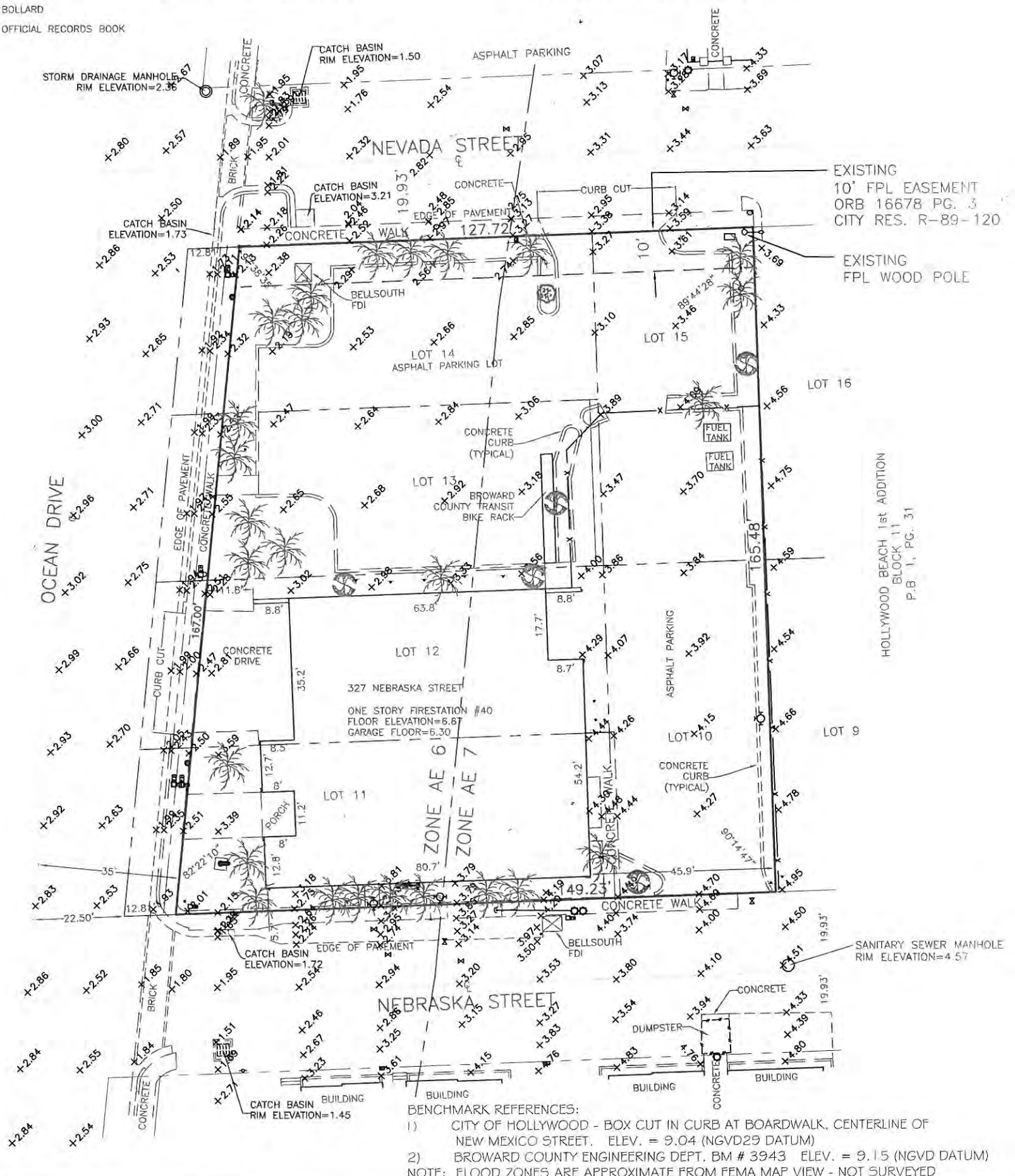
PROPERTY ZONING: R-6A PER O.R.B. 7489 PG. 390,  
O.R.B. 14022 PG. 900,  
O.R.B. 14066 PG. 956

**LEGEND**

- |   |  |
|---|--|
| <ul style="list-style-type: none"> <li>• GATE VALVE</li> <li>○ WATER METER</li> <li>⊕ FIRE HYDRANT ASSEMBLY</li> <li>○ MANHOLE - SEE SURVEY</li> <li>⊙ CB</li> <li>⊙ WOOD POWER POLE</li> <li>⊙ CONCRETE POWER POLE</li> <li>⊙ ANCHOR/GUY WIRE</li> <li>⊙ CONCRETE LIGHT POLE</li> <li>□ EB</li> <li>□ ELECTRIC BOX</li> <li>□ PULL BOX</li> <li>⊙ TRAFFIC SIGN POST</li> <li>⊙ CLEANOUT</li> <li>• ELEVATION</li> <li>• BOLLARD</li> <li>• O.R.B.</li> </ul> | <ul style="list-style-type: none"> <li>○ TREE - SPECIES VARIES - SEE SURVEY</li> <li>○ PALM TREE - SPECIES VARIES - SEE SURVEY</li> <li>⊙ FLAG POLE</li> <li>⊙ METAL LIGHT POLE</li> <li>⊙ SIGNAL POLE</li> <li>⊙ BUSH</li> <li>— RIGHT-OF-WAY LINE</li> <li>— CENTERLINE WITH STATIONS</li> <li>— CHAIN LINK FENCE</li> <li>— WOOD FENCE</li> <li>— BUILDING LINE</li> <li>— CONCRETE WALL</li> </ul> |
|---|--|

**SUMMARY OF EXCEPTIONS, RESTRICTIONS & EASEMENTS:**

1. ALL MATTERS CONTAINED ON THE PLAT OF HOLLYWOOD BEACH FIRST ADDITION - SHOWN HEREON
2. F.P.L. EASEMENT O.R.B. 16678, PG. 3 - SHOWN HEREON
3. O.R.B. 32599, PG. 1510 - DOES NOT AFFECT THIS PROPERTY
4. O.R.B. 7489, PG. 390 - ZONING CHANGE;  
O.R.B. 14022, PG. 900 - LAND USE CHANGE  
O.R.B. 14066, PG. 956 - DOES NOT AFFECT THIS PROPERTY
5. UNRECORDED LEASE RIGHTS



**BENCHMARK REFERENCES:**  
1) CITY OF HOLLYWOOD - BOX CUT IN CURB AT BOARDWALK, CENTERLINE OF NEW MEXICO STREET. ELEV. = 9.04 (NGVD29 DATUM)  
2) BROWARD COUNTY ENGINEERING DEPT. BM # 3943 ELEV. = 9.15 (NGVD DATUM)  
NOTE: FLOOD ZONES ARE APPROXIMATE FROM FEMA MAP VIEW - NOT SURVEYED

FEMA FLOOD INSURANCE RATE MAP		COMMUNITY NO.		NOTES			NOT VALID WITHOUT THE SIGNATURE AND ORIGINAL RAISED SEAL OF THE FLORIDA LICENSED SURVEYOR AND MAPPER
CITY OF HOLLYWOOD BROWARD COUNTY, FLORIDA		125113					
PANEL NO.	SUFFIX	ZONE	FIRM DATE	BASE ELEV.	LOWEST FLR. ELEV.	AVG. GRD.	
0588	H		8-18-14				
REVISION		DATE	BY	BOUNDARY AND TOPOGRAPHIC SURVEY		GIBBS LAND SURVEYORS 2131 HOLLYWOOD BOULEVARD, SUITE 204 HOLLYWOOD, FL 33020 (954) 923-7666 LICENSED BUSINESS NO. 7018	
				SCALE: 1"=30'	FILE No.:		
				DRAWN BY: CM	CHECKED BY: SKS		