

Figure 11
 Rotary Park Boat Ramp Improvements
 Hollywood Waterways Master Plan
 Hollywood, Florida

Hollywood Options.dwg Rotary Park 3/28/14

Rotary Park Boat Ramp Improvements

Description: The City of Hollywood has an opportunity to improve access to the water at Rotary Park by making improvements to the existing boat ramp and surrounding area. Presently the boat ramp is in poor condition with dense vegetation, limited parking and an unstable floating dock.

This project, as seen in Figure 11, would include the expansion of the boat ramp to include docks on both sides of the ramp to improve safety when accessing boats. A floating day-use dock should be constructed to the adjacent to the boat ramp to allow for staging of vessels just entering the water or waiting to pull out of the boat ramp. It also provides a nice walkway along the water with the potential for a gazebo over the water on the eastern end of the dock. The addition of a kayak launch away from the motorized boat ramp would alleviate any safety concerns of both activities being launched from the same space. It was also suggested that a temporary-use kayak rack may be useful for weekend users.

Further upland improvements should also include there-configuring the parking for increased trailer parking, general park like landscaping with removal of non-native species, and the overall improvement of the view of the water.

Justification: access and revitalization

Works: retrofit Boat Ramp to include stable dockage without utilities (day use dockage) along the shoreline, vegetation removal/trimming

Related Works: Upland public access, waterfront park, landscaping, etc.

Management Issues: operation regulations and control, City of Hollywood

Cost / Funding: relatively low cost. FIND and Broward County Improvement funding available for boating infrastructure

City Decision-Making Control: High (permitting and construction on City-Owned properties)

Complexity: Intermediate

Importance: Intermediate

Priority: Low

**This project was shared with the Stan Goldman Master Planning Team for consideration.
(See pg. 98-99 for concept)*

Stan Goldman Memorial Park Waterways Improvements

Description: There is already a Master Plan project being formulated at Stan Goldman Memorial Park. However, our assessment sees more opportunity pertaining to the potential uses of its waterfront (Figure 12).

Currently, the dense vegetation along the water provides privacy for the park but this privacy also leads to illegal activities within the park.

Seeing as it is the terminus of the C-10 canal it is thought to be a good opportunity for passive waterfront usage such as non-motorized (kayak and canoe) boats, Stand-Up Paddleboards (SUP) and limited fishing. Such ideas as a kayak launch and a fishing pier should be considered as part of the current Master Plan.

Potential access by motor boats may also be added to the existing master plan. A small day-use dock could be constructed alongside the concrete walkway near the location of the current restroom facilities, in order to provide access to the park from the waterways.

Justification: Beautification and Security for park.

Works: Trimming/removing vegetation to allow view of the water (Does not include already existing Master Plan tasks).

Related Works: City Master Plan for the Park, Landscaping, etc.

Management Issues: operation regulations and control, City of Hollywood

Cost / Funding: relatively low cost to trim/remove vegetation and conduct assessment of shoreline.

City Decision-Making Control: High (permitting and construction on City-Owned properties)

Complexity: intermediate (if coordination of permits required) does not include master plan.

Importance: High

Priority: Intermediate

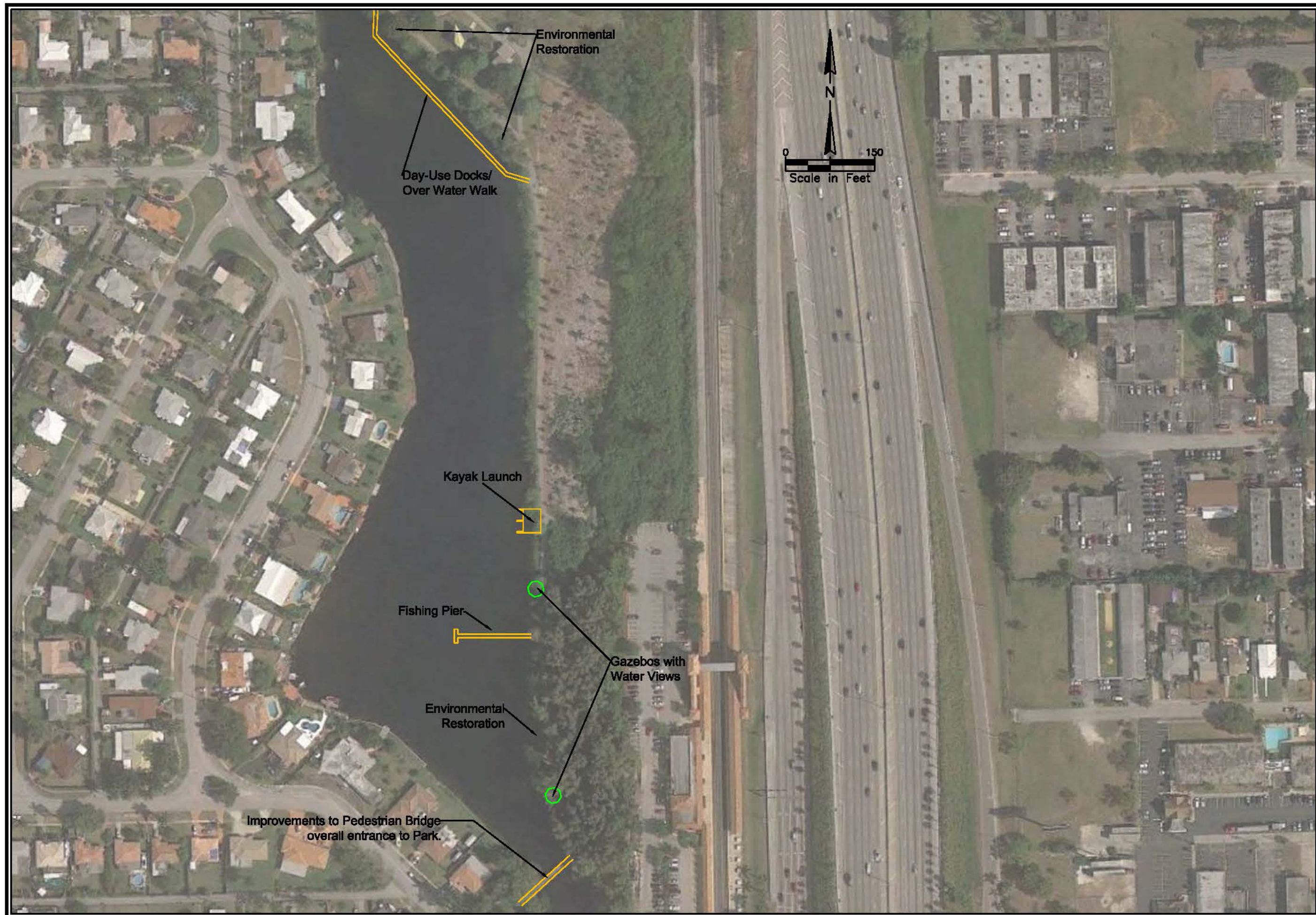


Figure 12
Stan Goldman Memorial Park
Hollywood Waterways Master Plan
Hollywood, Florida



Figure 13
 C-10 Maintenance
 Hollywood Waterways Master Plan
 Hollywood, Florida

C-10 Canal Maintenance

Description: There are many residents within the City of Hollywood that live on and use the C-10 canal for boating, kayaking, and other recreational activities. An assessment of the canal system including the finger canals should be conducted to identify issues which can hinder navigation. The residents have identified several areas where maintenance should be considered. Dredging of the finger canals, trimming of vegetation, and the removal of sunken vessels are key items that will enhance the waterways and make them safer for recreational use. A large portion of the residential waterfront along the C-10 canal is depicted in Figure 13.

Coordination and partnership with the South Florida Water Management District (SFWMD) will be necessary to facilitate this action.

Funding for this project will require further investigation but the Florida Inland Navigation District (F.I.N.D.) and other organizations should be able to provide partial funding through various programs.

Justification: Aid to navigation

Works: Maintenance dredging and tree pruning

Related Works: Potential for upland public access, waterfront park / landscaping, etc.

Management Issues: operation regulations and control in coordination with SFWMD

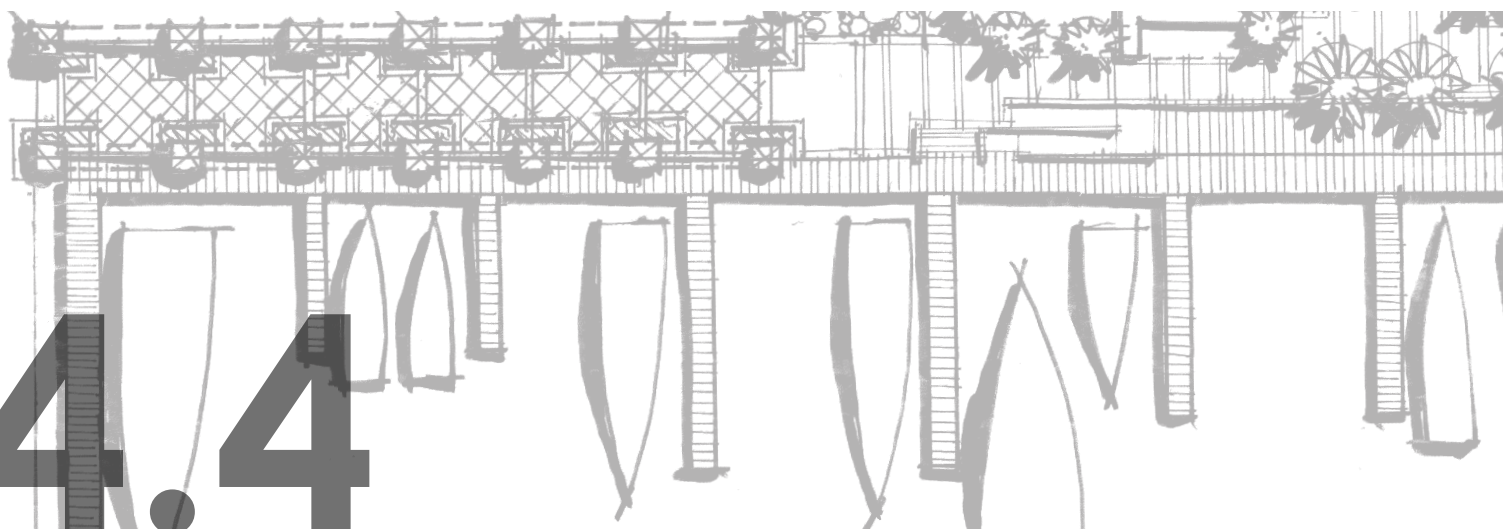
Cost / Funding: relatively low cost. FIND funding may be available

City Decision-Making Control: Low (coordination with SFWMD)

Complexity: Intermediate (coordination with SFWMD)

Importance: High

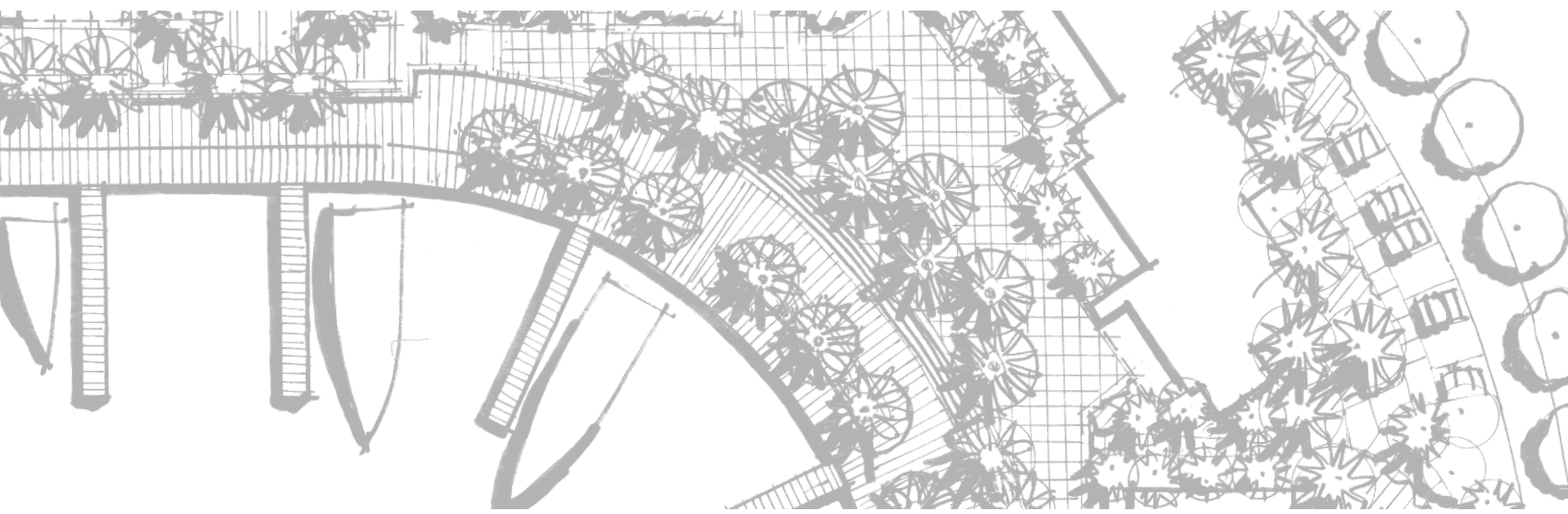
Priority: High



4.4

Alternative Design Concepts

**The projects as described in the technical analysis represent all ideas and concepts as put forth to the public and City Commission. Several projects were not approved by the public or the City Commission. However, the team felt it necessary to document the planning effort in the appendix in the event that conditions change and they could be considered in the future.*





neighborhood paths option A.2

Description: Option B adds a walkable overlook structure to Option A, allowing users to gain closer proximity to the water.

Justification: Further increased ability of neighborhood users to approach the water.

Works: Composite wood/concrete structures spanning the seawall.

Related Works: Seawall survey to assess conditions of existing edge. If seawall replacement is recommended there is potential to combine projects.

Management: City public works, parks and recreation.

Cost / Funding: City funding with opportunity for FIND Grant

City Decision-Making Control: intermediate- possibly subject to ACOE And SFWMD.

Complexity: Intermediate to high, depending on condition of existing seawall.

Importance: Intermediate

Priority: Overall project-high. Option A.2- intermediate.



neighborhood paths option A.3

Recommendations: Similar to previous plans but incorporate low height wetland filters for stormwater runoff and aquatic life habitat restoration

Justification: further extends users ability to approach water in a passive way, incorporates environmental restoration

Works: over water structures, lake bottom contouring, aquatic planting, possible seawall repairs

Related works: seawalls and storm outfalls

Management: city engineering and public works in coordination with A.C.O.E. And S.F.W.M.D.

Cost / funding: intermediate to high cost, dependent in part on exclusion of seawalls. Like other options, potential for FIND Grant

City decision-making control: intermediate to low- several factors involving permitting structures and lake bottom contouring/planting

Complexity: intermediate

Importance: overall project-high, option A.3-intermediate

Priority: overall project-high, option A.3-intermediate

Stanley Goldman Memorial Park

**This project was shared with the Stan Goldman Master Planning Team for consideration.*

Description: The City provided Master Plan addresses access to water through boardwalks, piers, or docks. These are important enhancements to the park to connect it to the water. In addition to this, opening “windows” to the water through the dense vegetation will help to open the park up visually. Shoreline stabilization measures may need to be taken and this issue should be assessed.

Justification: Beautification and Security for park

Works: Trimming/removing vegetation to allow view of the water (Does not include already existing Master Plan tasks

Related Works: City Master Plan for the Park, Landscaping, etc.

Management Issues: operation regulations and control, City of Hollywood

Cost / Funding: relatively low

City Decision-Making Control: High (permitting and construction on City-Owned properties)

Complexity: intermediate (if coordination of permits required) does not include master plan

Importance: High

Priority: Intermediate







E-mail: info@edsaplan.com
visit: www.edsaplan.com

OFFICE LOCATION

FORT LAUDERDALE

1512 East Broward Boulevard, Suite 110
Fort Lauderdale, Florida 33301
Phone: 954.524.3330