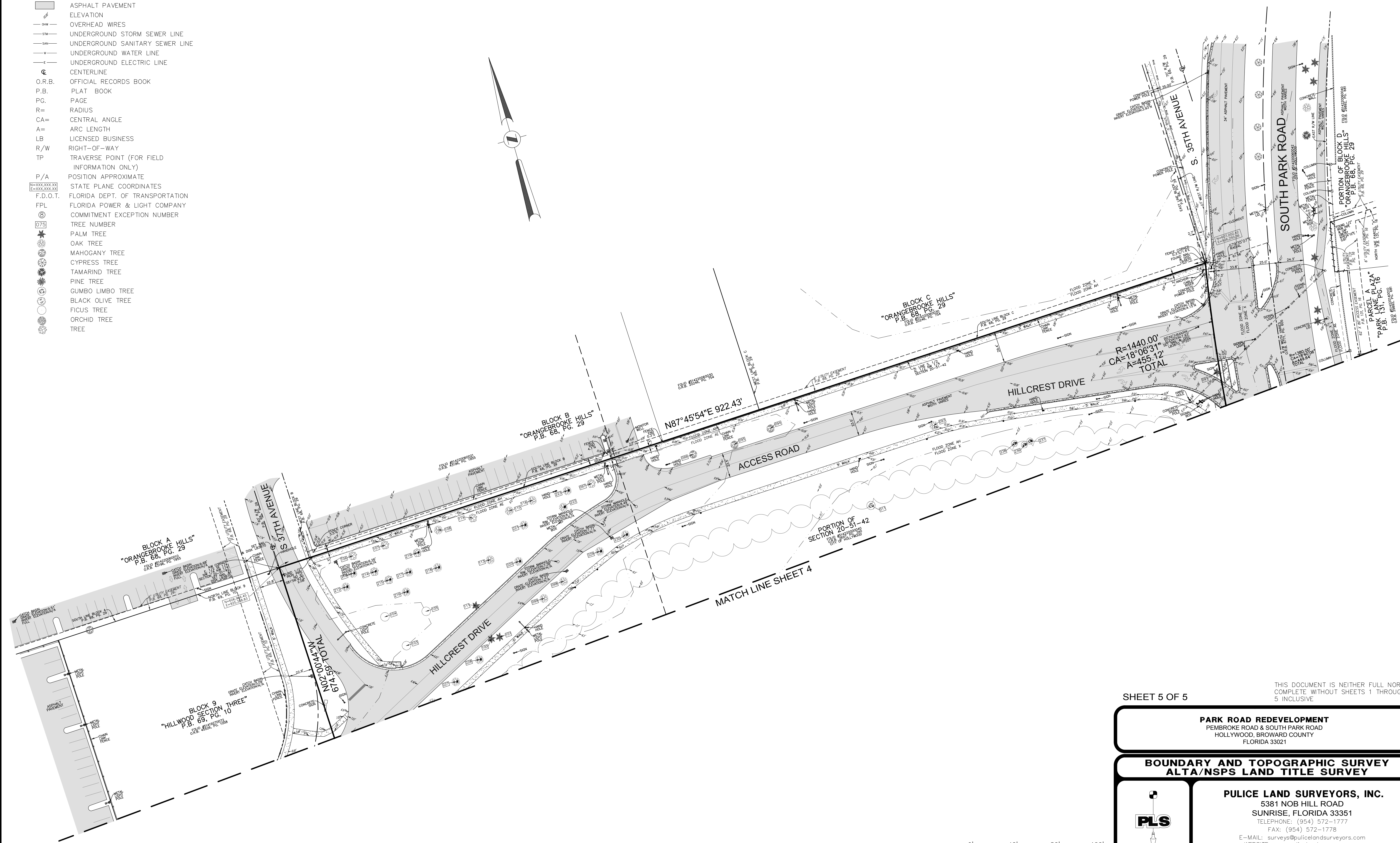
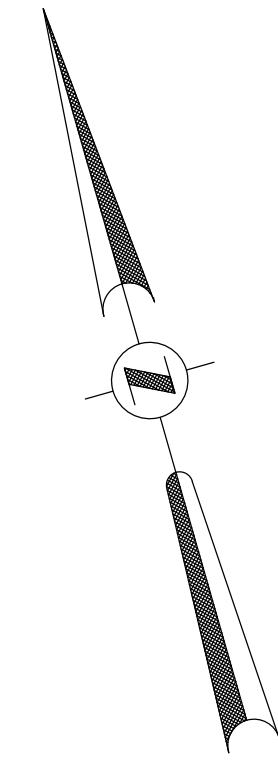


- LEGEND**
- CONCRETE
 - ASPHALT PAVEMENT
 - ELEVATION
 - OVERHEAD WIRES
 - UNDERGROUND STORM SEWER LINE
 - UNDERGROUND SANITARY SEWER LINE
 - UNDERGROUND WATER LINE
 - UNDERGROUND ELECTRIC LINE
 - CENTERLINE
 - O.R.B. OFFICIAL RECORDS BOOK
 - P.B. PLAT BOOK
 - P.G. PAGE
 - R= RADIUS
 - CA= CENTRAL ANGLE
 - A= ARC LENGTH
 - LB LICENSED BUSINESS
 - R/W RIGHT-OF-WAY
 - TP TRAVERSE POINT (FOR FIELD INFORMATION ONLY)
 - P/A POSITION APPROXIMATE
 - STATE PLANE COORDINATES
 - F.D.O.T. FLORIDA DEPT. OF TRANSPORTATION
 - FPL FLORIDA POWER & LIGHT COMPANY
 - COMMITMENT EXCEPTION NUMBER
 - TREE NUMBER
 - PALM TREE
 - OAK TREE
 - MAHOGANY TREE
 - CYPRESS TREE
 - TAMARIND TREE
 - PINE TREE
 - GUMBO LIMBO TREE
 - BLACK OLIVE TREE
 - FICUS TREE
 - ORCHID TREE
 - TREE

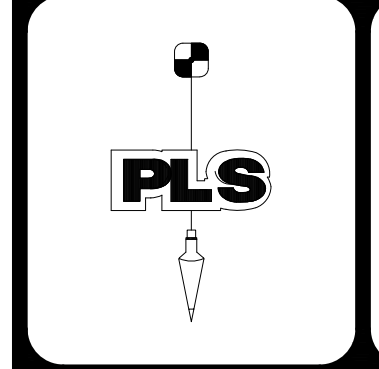


SHEET 5 OF 5

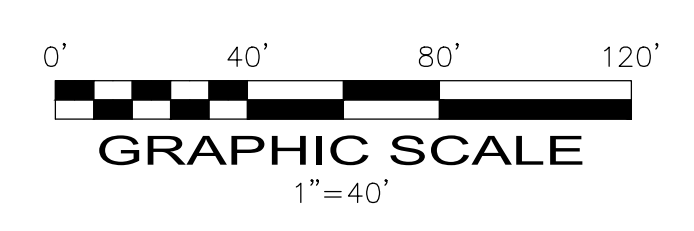
THIS DOCUMENT IS NEITHER FULL NOR COMPLETE WITHOUT SHEETS 1 THROUGH 5 INCLUSIVE

PARK ROAD REDEVELOPMENT
 PEMBROKE ROAD & SOUTH PARK ROAD
 HOLLYWOOD, BROWARD COUNTY
 FLORIDA 33021

**BOUNDARY AND TOPOGRAPHIC SURVEY
 ALTA/NSPS LAND TITLE SURVEY**



POLICE LAND SURVEYORS, INC.
 5381 NOB HILL ROAD
 SUNRISE, FLORIDA 33351
 TELEPHONE: (954) 572-1777
 FAX: (954) 572-1778
 E-MAIL: surveys@policeandsurveyors.com
 WEBSITE: www.policeandsurveyors.com
 CERTIFICATE OF AUTHORIZATION LB#3870



DRAWN BY: B.E.
 CHECKED BY: J.F.P.

SCALE: 1" = 40'
 SURVEY DATE: 3/20/24

FILE: PARK ROAD DEVELOPMENT, LLC
 ORDER NO.: 73096