

KNOW ALL MEN BY THESE PRESENTS:  
That the Commercial Bank & Trust Co., a corporation of Florida, as trustee, has caused to be made the attached plat of "AMENDED PLAT OF HOLLYWOOD PINE-5" the same being an amended plat of "HOLLYWOOD PINE-5" as recorded in Book No. \_\_\_\_\_ of Plats at Page No. \_\_\_\_\_ Public Records of Broward County, Florida.  
Said tract of land being subdivided into Blocks and Lots, the Street, Drives, Road, Avenues, Alleys, Playgrounds and Park as shown thereon are hereby dedicated to the perpetual use of the public for proper purposes, reserving however to the said Commercial Bank & Trust Co., as trustee, its successors or assigns all reversion and reversions thereof whenever closed or vacated in accordance with law.  
In Witness Whereof the Commercial Bank & Trust Co., as trustee, has caused these presents to be properly executed and its seal affixed thereto with full authority to do so this \_\_\_\_\_ day of \_\_\_\_\_ AD 1925.

COMMERCIAL BANK & TRUST CO.

Attest \_\_\_\_\_  
Secretary

By \_\_\_\_\_  
Vice President

STATE OF FLORIDA } ss.  
COUNTY OF DADE }

I Herby Certify that on this day personally appeared before me, an officer duly authorized to administer oaths and take acknowledgements, \_\_\_\_\_ and \_\_\_\_\_ respectively \_\_\_\_\_ president and \_\_\_\_\_ secretary of the Commercial Bank & Trust Co., a corporation duly organized and existing under the laws of the State of Florida, to me known to be the persons described in and who executed the foregoing instrument, and they acknowledged the execution thereof to be their free act and deed as such officers for the uses and purposes therein mentioned and that they affixed thereto the official seal of said corporation, and the said instrument is the act and deed of said corporation, as trustee.  
Witness my hand and official seal of Miami, Dade County, Florida, this \_\_\_\_\_ day of \_\_\_\_\_ AD 1925.

Notary Public, State of Florida at large.  
My Commission Expires \_\_\_\_\_ 1929

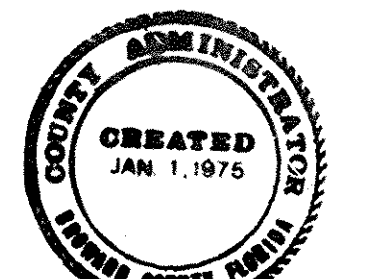
Approved for record \_\_\_\_\_  
County Engineer, Broward County, Fla.

We Herby Certify that the attached plat of "AMENDED PLAT OF HOLLYWOOD PINE-5" is a true and correct map of such property as recently surveyed, monumented and platted under our direction.

BISCAYNE ENGINEERING CO.  
By \_\_\_\_\_  
Registered Engineer No. \_\_\_\_\_

Filed this \_\_\_\_\_ day of \_\_\_\_\_ AD 1925, at \_\_\_\_\_ M in Book No. \_\_\_\_\_ of Plats, at Page No. \_\_\_\_\_ Public Records of Broward County, Florida.

F. A. Bryan - Clerk of Circuit Court  
By \_\_\_\_\_  
deputy Clerk.



STATE OF FLORIDA  
COUNTY OF BROWARD  
I HERBY CERTIFY that this is a true and correct copy of a map or plat as the same appears of record in Plat Book \_\_\_\_\_ at Page \_\_\_\_\_ of the public record of Broward County Florida. WITNESS my hand and official seal in the City of Fort Lauderdale, FL this \_\_\_\_\_ day of \_\_\_\_\_ AD 1925.

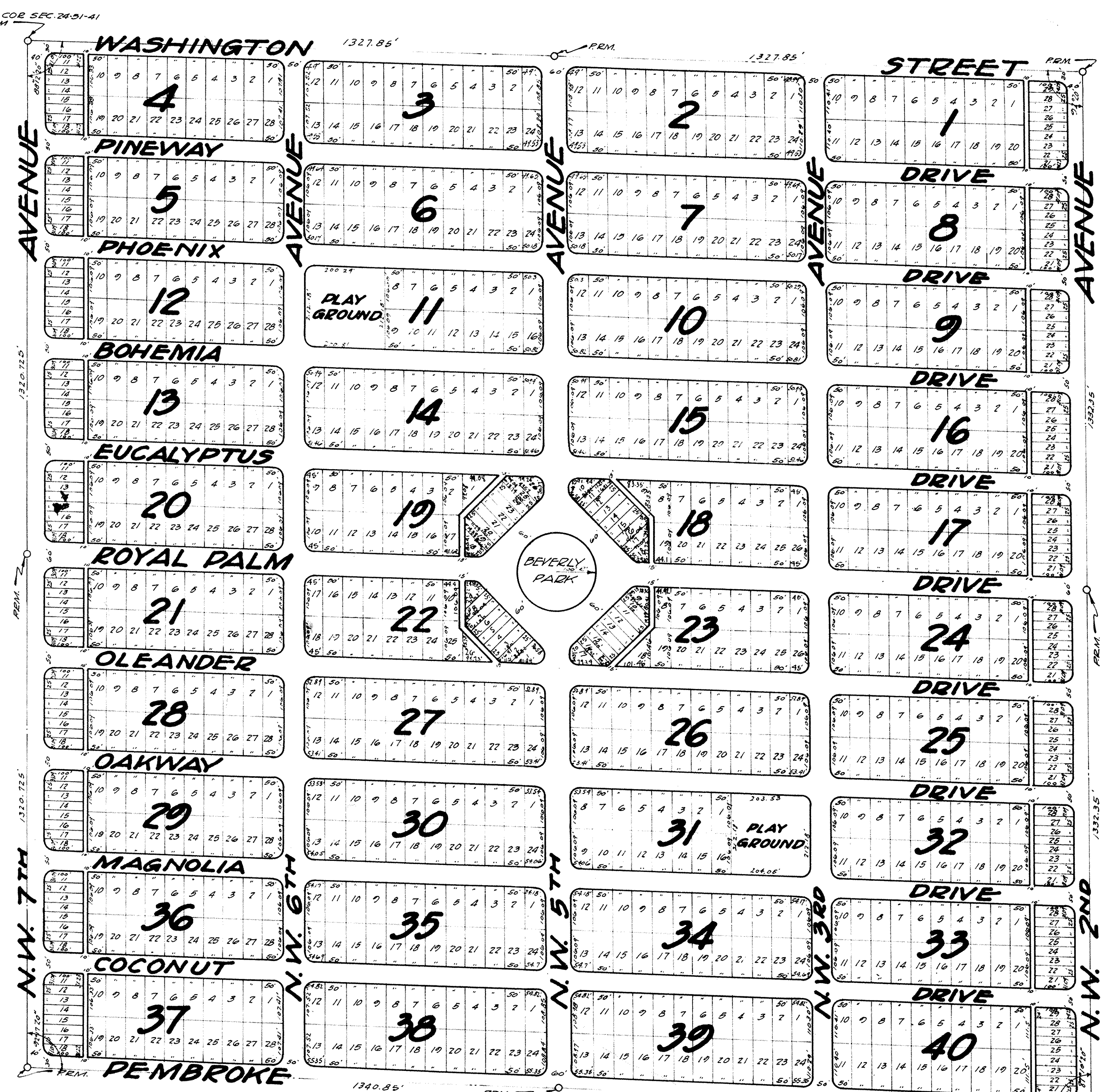
A. HESTER, County Administrator  
By \_\_\_\_\_ D.C.

STATE OF FLORIDA  
COUNTY OF BROWARD  
This instrument filed for record \_\_\_\_\_ 1925, and recorded in Book \_\_\_\_\_ of Public Records, on page \_\_\_\_\_  
RECORD VERIFIED.

STATE OF FLORIDA  
COUNTY OF BROWARD  
I hereby certify that the within plat complies with plat law of 1925 General Acts.  
FRANK A. BRYAN,  
Clerk Circuit Court.

FRANK A. BRYAN,  
Clerk of Circuit Court.  
By \_\_\_\_\_  
Deputy Clerk.

By \_\_\_\_\_ D.C.



AMENDED PLAT OF  
**HOLLYWOOD PINES**  
A SUBDIVISION IN SEC. 24-TWP. 51 S., RGE. 41 E.  
BROWARD COUNTY, FLORIDA

COMMERCIAL BANK & TRUST CO. - TRUSTEE

SCALE - 1" = 160'  
DISCAYNE ENGINEERING CO. MIAMI, FLORIDA. NOV. 1925  
05476 FB207

Note: Dimensions on corner lots are to intersection of block lines as indicated. Radii are 25' unless otherwise noted.