

**GARFIELD STREET**

**EXISTING MULTI-STORY PARKING GARAGE**

**HOSPITAL DRIVE**

**PROPOSED BED TOWER (8 STORY)**

**PROPOSED SURGERY PLATFORM & LEVEL 03 CONNECTOR**

**FIRE FLOW CALCULATIONS  
O.R. EXPANSION PROJECT  
3501 JOHNSON ST, HOLLYWOOD**

THESE CALCULATIONS ARE FOR THE O.R. EXPANSION PROJECT WITH A TOTAL GROUND FLOOR SQUARE FOOTAGE OF X SF. THE ENTIRE BUILDING IS NON-COMBUSTIBLE CONSTRUCTION.

**FIRE FLOW**

BASED ON TYPE I (322) CONSTRUCTION, PER NFPA 18.4.4.1 - FIRE FLOW AREA, THE FIRE FLOW AREA IS BASED ON THE TOTAL SQUARE FOOTAGE OF THE THREE LARGEST FLOORS WHICH IS GREATER THAN 295,900 SQUARE FEET.

PER TABLE 18.4.5.2.1, THE FIRE FLOW REQUIREMENT IS 6,000 GPM FOR 4 HOURS.

NFPA 18.4.5.3.2 STATES THAT THE REQUIRED FIRE FLOW CAN BE REDUCED BY 75% IF THE BUILDING HAS AUTOMATIC SPRINKLERS.

6,000 GPM x 75% = 4,500 GPM (FIRE FLOW CREDIT)

6,000 GPM - 4,500 GPM = 1,500 GPM

PROVIDED FIRE FLOW - ON DATE 09/13/23 A FIRE FLOW TEST WAS CONDUCTED BY THE CITY OF HOLLYWOOD RESULTING IN A STATIC PRESSURE OF 55 PSI, AND A RESIDUAL PRESSURE OF 54 PSI WITH BOTH HYDRANTS FLOWING SIMULTANEOUSLY. THE LOWEST FLOW WAS 1,090 GPM. THIS EQUATES TO 7,434 GPM AT 20 PSI.

**NOTES:**

WATER SUPPLY SHALL MEET THE REQUIREMENTS OF NFPA 1 (2021 ED.), SECTION 18.3.1.

ALL UNDERGROUND FIRE MAIN WORK MUST BE COMPLETED BY FIRE PROTECTION CONTRACTOR HOLDING A CLASS I, II, OR V LICENSE PER FS 633.102.

WATER SUPPLY AND ANY NEW HYDRANTS SHALL BE IN PLACE PRIOR TO ACCUMULATION OF COMBUSTIBLE MATERIALS PER NFPA 1 (2021 ED.) SECTION 18.

WATER AND SEWER DEMANDS FOR THIS PROJECT HAVE BEEN CALCULATED BY THE MEP ENGINEER TO BE 500 GPM.

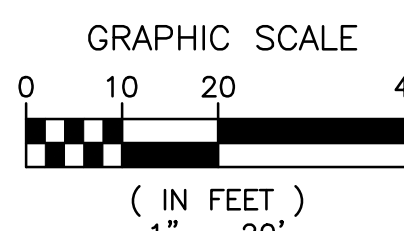
FINAL TAC  
ELEVATIONS ARE IN NAVD88

**C06 UTILITY PLAN**  
1" = 20'-0"

UTILITY CROSSINGS TABLE with columns for ID, DESCRIPTION, NO., and utility details for various pipe types and materials.

HATCHING LEGEND with symbols for PROPOSED BUILDING, PROPOSED DETECTABLE WARNING SURFACES, PROPOSED FULL DEPTH RECONSTRUCTION, PROPOSED CONCRETE SIDEWALK, PROPOSED FIRE DEPARTMENT ACCESS ROUTE, and PROPOSED TEMPORARY FIRE DEPARTMENT ACCESS ROUTE (DURING CONSTRUCTION).

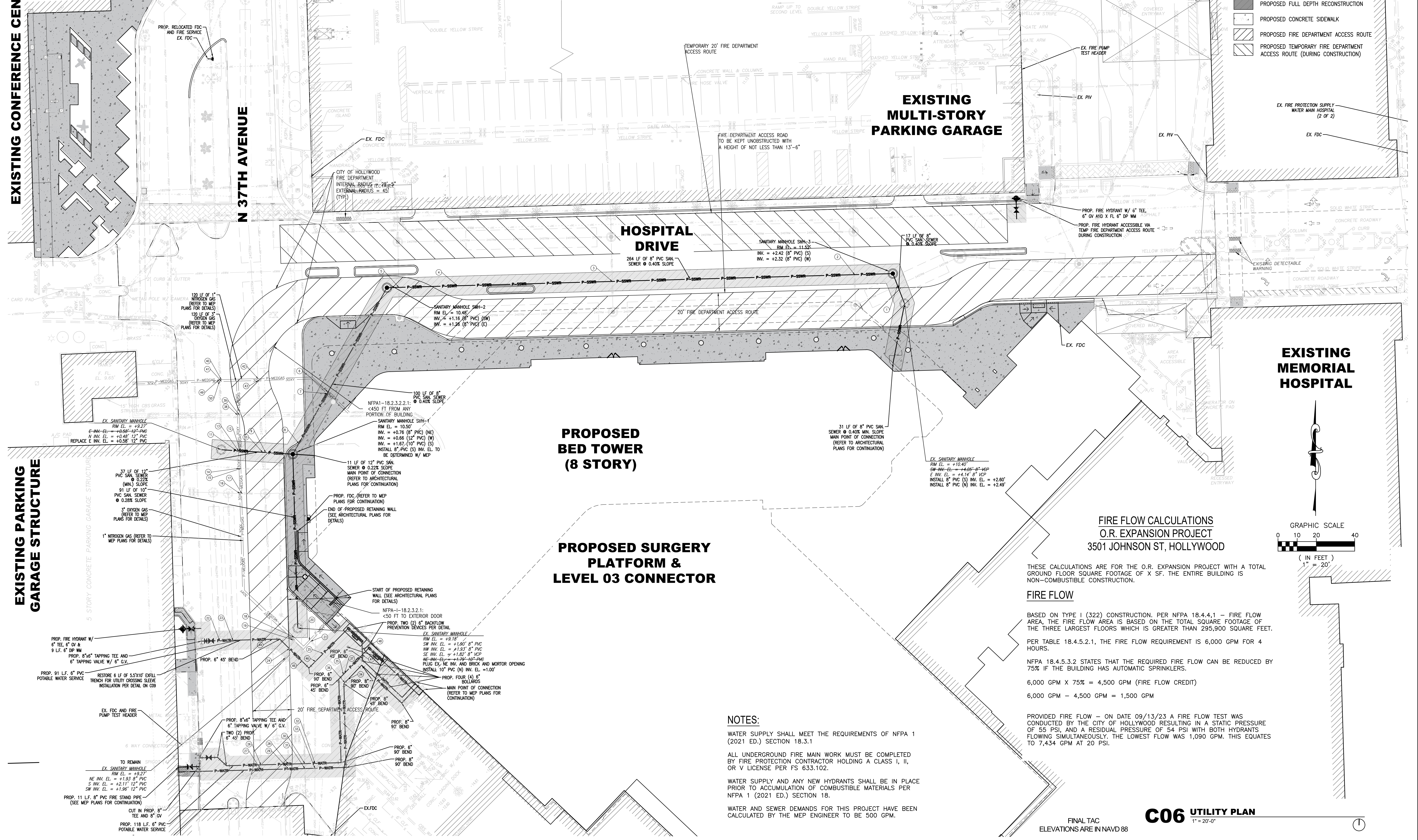
**EXISTING MEMORIAL HOSPITAL**



EXISTING CONFERENCE CENTER

EXISTING PARKING GARAGE STRUCTURE

N 37TH AVENUE





**BROWARD COUNTY PUBLIC WORKS DEPARTMENT** WATER & WASTEWATER SERVICES ENGINEERING DIVISION 3355 WEST COVINGS ROAD FORT LAUDERDALE, FL 33309 PHONE NO. 954-631-0745 FAX NO. 954-631-0924

### STANDARD DETAIL

**DUCTILE IRON PIPE**

Diameter	HORIZONTAL, L (FEET)					45° VERTICAL OFFSET (FEET)	
	11 1/2"	22 1/2"	45"	90"	Tee or Cross	UPPER	LOWER
4	1	2	4	10	7	20	9
6	2	3	6	14	15	28	12
8	2	4	8	17	23	37	16
10	2	5	9	21	30	44	19
12	3	5	10	24	38	52	22

**PVC PIPE**

Diameter	HORIZONTAL, L (FEET)					45° VERTICAL OFFSET (FEET)	
	11 1/2"	22 1/2"	45"	90"	Tee or Cross	UPPER	LOWER
4	2	3	5	12	11	32	14
6	2	4	7	16	23	45	19
8	3	5	9	21	37	59	25
10	3	5	11	25	48	71	30
12	3	6	12	29	61	83	35

THE NOTED REQUIREMENTS WERE CALCULATED IN ACCORDANCE WITH THRUST RESTRAINT CALCULATOR V7.2 BY EBAA IRON WITH THE FOLLOWING ASSUMPTIONS:  
SOIL CONDITIONS: SW OR GW; NOMINAL SIZE EQUALS BRANCH SIZE; LENGTH ALONG RUN EQUALS 4 FEET  
LAYING CONDITION: 4. SAND BEDDING, BACKFILL COMPACTED > 90%; VERTICAL LOW SIDE DEPTH EQUALS 3.5 FEET  
MINIMUM COVER: 3.0 FT SAFETY FACTOR: 1.5 BARE PIPE (NO POLY WRAP)  
IF FIELD CONDITIONS DIFFER FROM THE ABOVE, CONTRACTOR SHALL NOTIFY HWS. FOR PIPE LARGER THAN INCLUDED IN THE ABOVE TABLES, ENGINEER OF RECORD SHALL SUBMIT CALCULATIONS FOR EACH JOINT REQUIRING RESTRAINT.

**SINGLE FITTING RESTRAINED JOINT 150 PSI TEST PRESSURE**

REPLACES FORMER DWG NO. 109  
REVISED 5/14/2018

**RESTRAINED JOINT REQUIREMENTS SINGLE FITTING**

**FIGURE 109**

**TYPICAL VALVE BOX SETTING**

ISSUED: 03/01/1994 DEPARTMENT OF PUBLIC UTILITIES STANDARD DETAIL REVISED: 06/08/2014  
DRAWN: EAM DRAWING NO. G-05  
APPROVED: XXX

**TYPICAL TAPPING SLEEVE AND VALVE SETTING**

ISSUED: 03/01/1994 DEPARTMENT OF PUBLIC UTILITIES STANDARD DETAIL REVISED: 06/08/2014  
DRAWN: EAM DRAWING NO. G-06  
APPROVED: XXX

**UTILITY CROSSING USING FITTINGS**

ISSUED: 03/01/1994 DEPARTMENT OF PUBLIC UTILITIES STANDARD DETAIL REVISED: 06/08/2014  
DRAWN: EAM DRAWING NO. G-04  
APPROVED: XXX

**TYPICAL VALVE BOX SETTING**

ISSUED: 03/01/1994 DEPARTMENT OF PUBLIC UTILITIES STANDARD DETAIL REVISED: 06/08/2014  
DRAWN: EAM DRAWING NO. G-05  
APPROVED: XXX

**UTILITY CROSSING USING FITTINGS**

ISSUED: 03/01/1994 DEPARTMENT OF PUBLIC UTILITIES STANDARD DETAIL REVISED: 06/08/2014  
DRAWN: EAM DRAWING NO. G-04  
APPROVED: XXX

**TYPICAL VALVE BOX SETTING**

ISSUED: 03/01/1994 DEPARTMENT OF PUBLIC UTILITIES STANDARD DETAIL REVISED: 06/08/2014  
DRAWN: EAM DRAWING NO. G-05  
APPROVED: XXX

**BROWARD COUNTY PUBLIC WORKS DEPARTMENT** WATER & WASTEWATER SERVICES ENGINEERING DIVISION 3355 WEST COVINGS ROAD FORT LAUDERDALE, FL 33309 PHONE NO. 954-631-0745 FAX NO. 954-631-0924

### STANDARD DETAIL

**RESTRAINED REDUCING FITTING 150 PSI TEST PRESSURE**

REPLACES FORMER DWG NO. 112  
REVISED 5/14/2018

**RESTRAINED JOINT REQUIREMENTS REDUCING FITTINGS**

**FIGURE 112**

**BROWARD COUNTY PUBLIC WORKS DEPARTMENT** WATER & WASTEWATER SERVICES ENGINEERING DIVISION 3355 WEST COVINGS ROAD FORT LAUDERDALE, FL 33309 PHONE NO. 954-631-0745 FAX NO. 954-631-0924

### STANDARD DETAIL

**FLEXIBLE PAVEMENT RESTORATION NOTES**

ISSUED: 03/01/1994 DEPARTMENT OF PUBLIC UTILITIES STANDARD DETAIL REVISED: 11/06/2017  
DRAWN: EAM DRAWING NO. G-12  
APPROVED: XXX

**BROWARD COUNTY PUBLIC WORKS DEPARTMENT** WATER & WASTEWATER SERVICES ENGINEERING DIVISION 3355 WEST COVINGS ROAD FORT LAUDERDALE, FL 33309 PHONE NO. 954-631-0745 FAX NO. 954-631-0924

### STANDARD DETAIL

**FLEXIBLE PAVEMENT RESTORATION NOTES**

ISSUED: 03/01/1994 DEPARTMENT OF PUBLIC UTILITIES STANDARD DETAIL REVISED: 11/06/2017  
DRAWN: EAM DRAWING NO. G-12  
APPROVED: XXX

**BROWARD COUNTY PUBLIC WORKS DEPARTMENT** WATER & WASTEWATER SERVICES ENGINEERING DIVISION 3355 WEST COVINGS ROAD FORT LAUDERDALE, FL 33309 PHONE NO. 954-631-0745 FAX NO. 954-631-0924

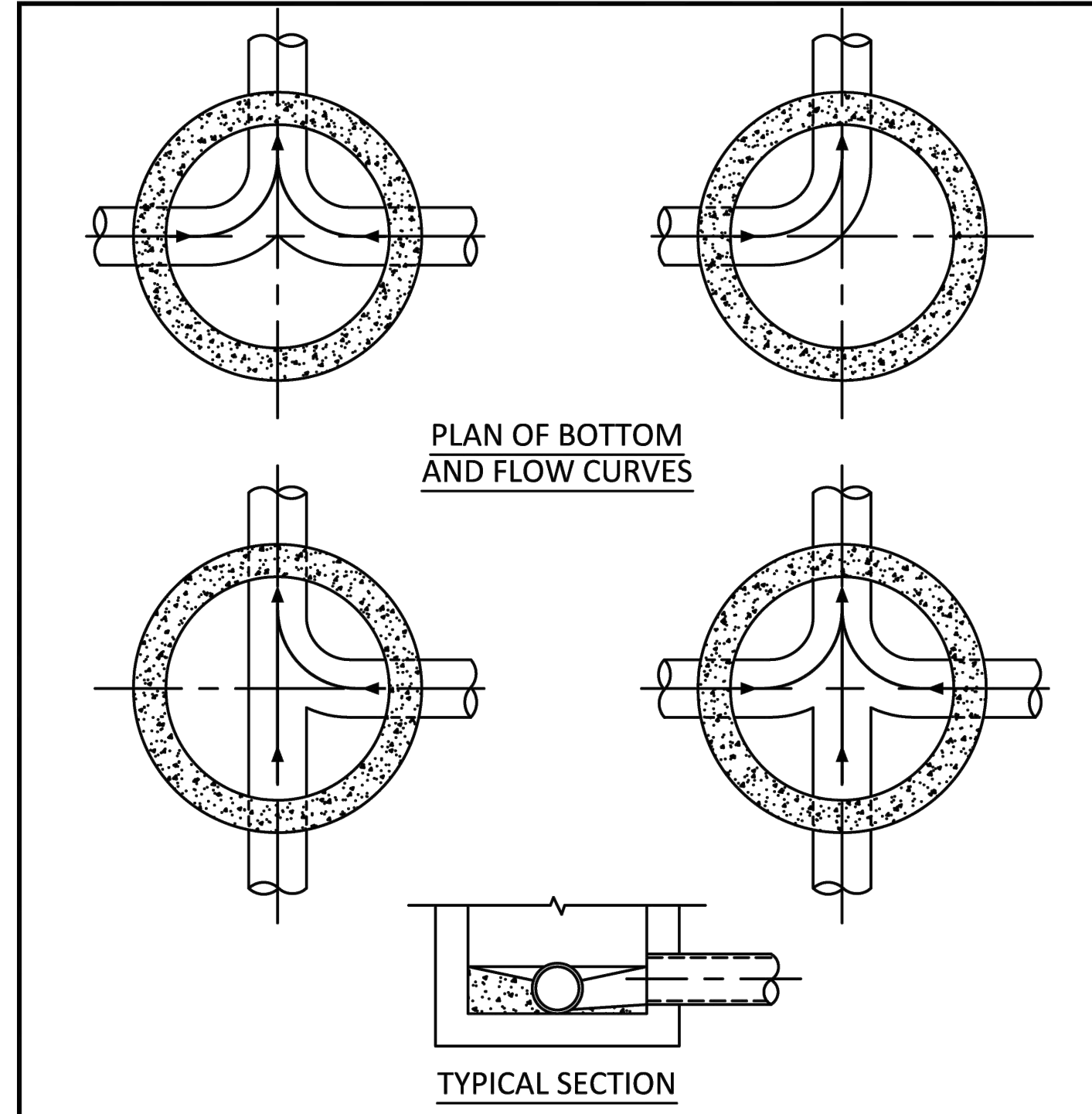
### STANDARD DETAIL

**FLEXIBLE PAVEMENT RESTORATION NOTES**

ISSUED: 03/01/1994 DEPARTMENT OF PUBLIC UTILITIES STANDARD DETAIL REVISED: 11/06/2017  
DRAWN: EAM DRAWING NO. G-12  
APPROVED: XXX

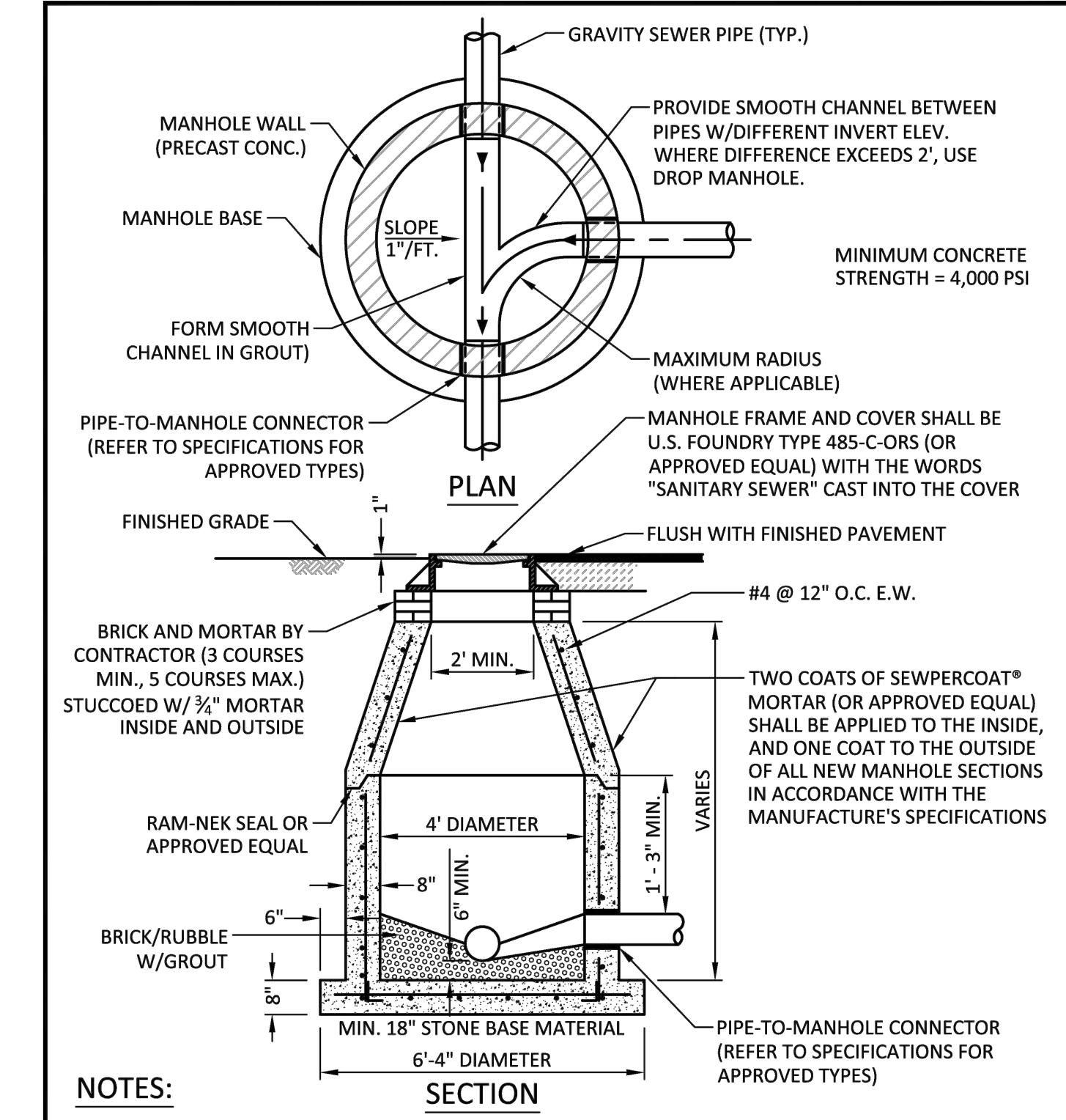


TITLE BLOCK VERSION: 2018/08/01  
 MODEL: P:\PROJECTS\2021\17-5580 (RIR) OR EXPANSION\CADD FILES\DRAWINGS\2116590-C-DETL  
 PRINT DATE: 05/20/2024 10:53:59 AM  
 TEMPLATE VERSION: 21.03.2020/08/01



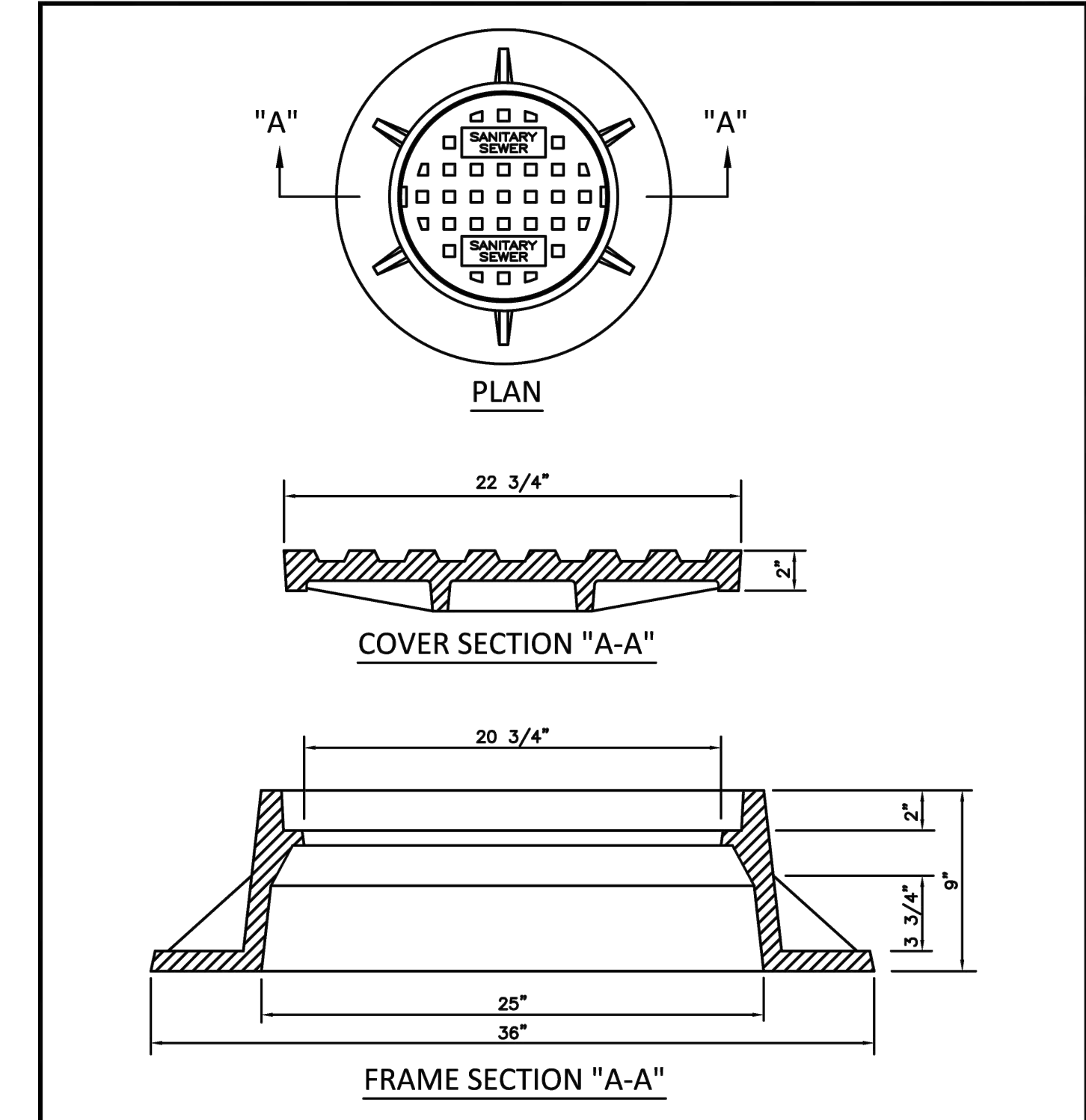
- NOTES:**
1. INVERT CHANNELS TO BE CONSTRUCTED FOR SMOOTH FLOW WITH NO OBSTRUCTIONS.
  2. SPILLWAYS SHALL BE CONSTRUCTED BETWEEN PIPES WITH DIFFERENT INVERT ELEVATIONS PROVIDING SMOOTH FLOWS.
  3. CHANNELS FOR FUTURE CONNECTIONS (STUBS) SHALL BE CONSTRUCTED FILLED WITH SAND & COVERED WITH 1" OF MORTAR.
  4. WHEN FLOW LINE DEFLECTS MORE THAN 45°, A DROP OF 0.10' IS REQUIRED.

ISSUED: 03/01/1994	DEPARTMENT OF PUBLIC UTILITIES STANDARD DETAIL	REVISED: 06/08/2014
DRAWN: EAM	MANHOLE FLOW PATTERNS	DRAWING NO. S-02
APPROVED: XXX		



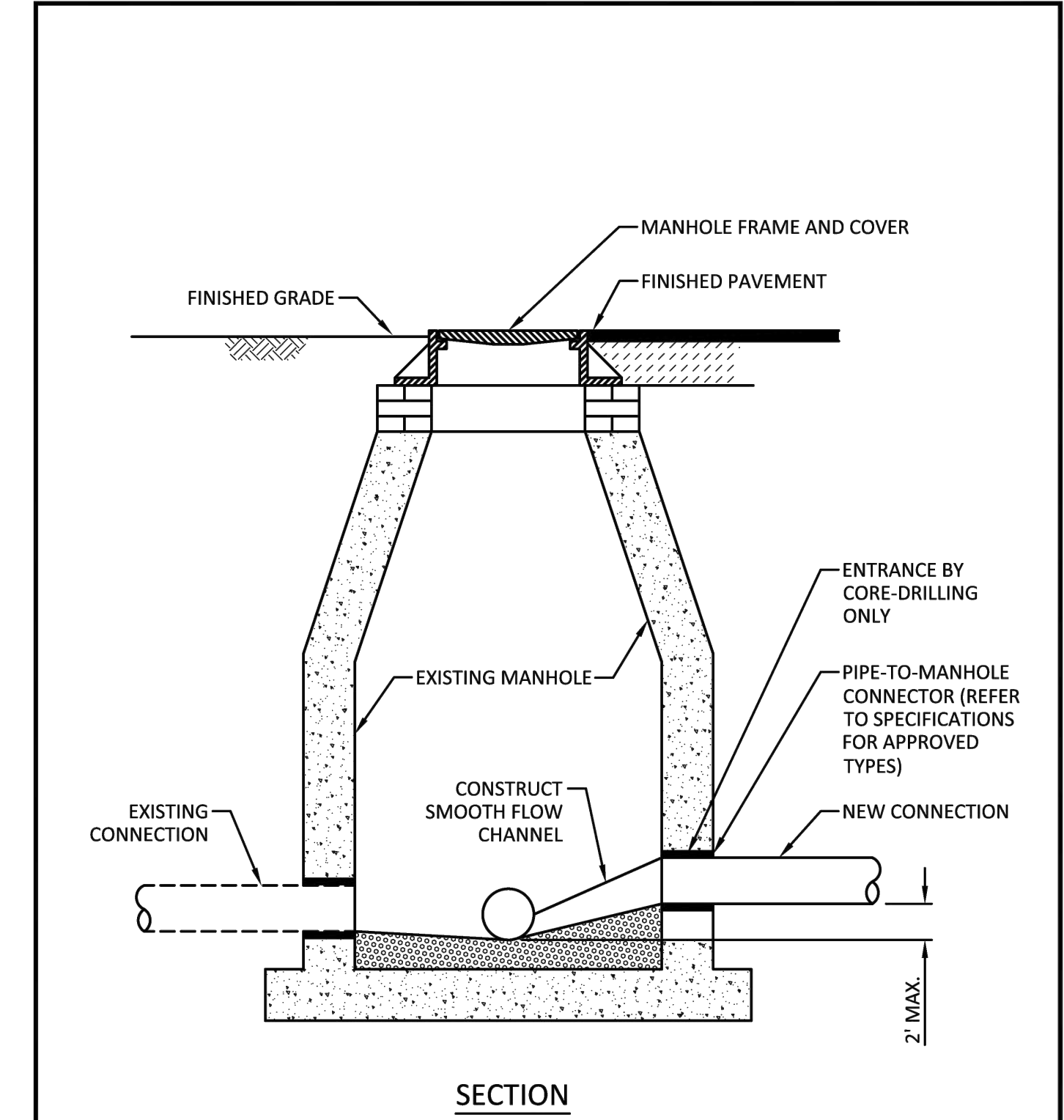
- NOTES:**
1. SHOP DRAWINGS SHOWING ALL DIMENSIONS, INCLUDING CONCRETE REINFORCEMENT AND BUOYANCY, SHALL BE SUBMITTED TO THE CITY PRIOR TO INSTALLATION.
  2. THE BOTTOM SLAB SHALL BE CAST MONOLITHICALLY WITH THE LOWER WALL SECTION TO A MINIMUM OF 3" ABOVE SLAB BASE.
  3. NO CONSTRUCTION JOINTS ARE ALLOWED BELOW ELEVATION +2.00 NAVD. ABOVE ELEVATION +2.00 NAVD CONSTRUCTION JOINTS ARE ALLOWED, IF ADEQUATE JOINTS WITH KEY-WAYS AND WATER STOPS ARE PROVIDED. SUBMIT SHOP DRAWINGS OF JOINT DETAILS TO THE ENGINEER FOR APPROVAL.

ISSUED: 03/01/1994	DEPARTMENT OF PUBLIC UTILITIES STANDARD DETAIL	REVISED: 07/18/2018
DRAWN: EAM	STANDARD PRECAST MANHOLE	DRAWING NO. S-03
APPROVED: XXX		



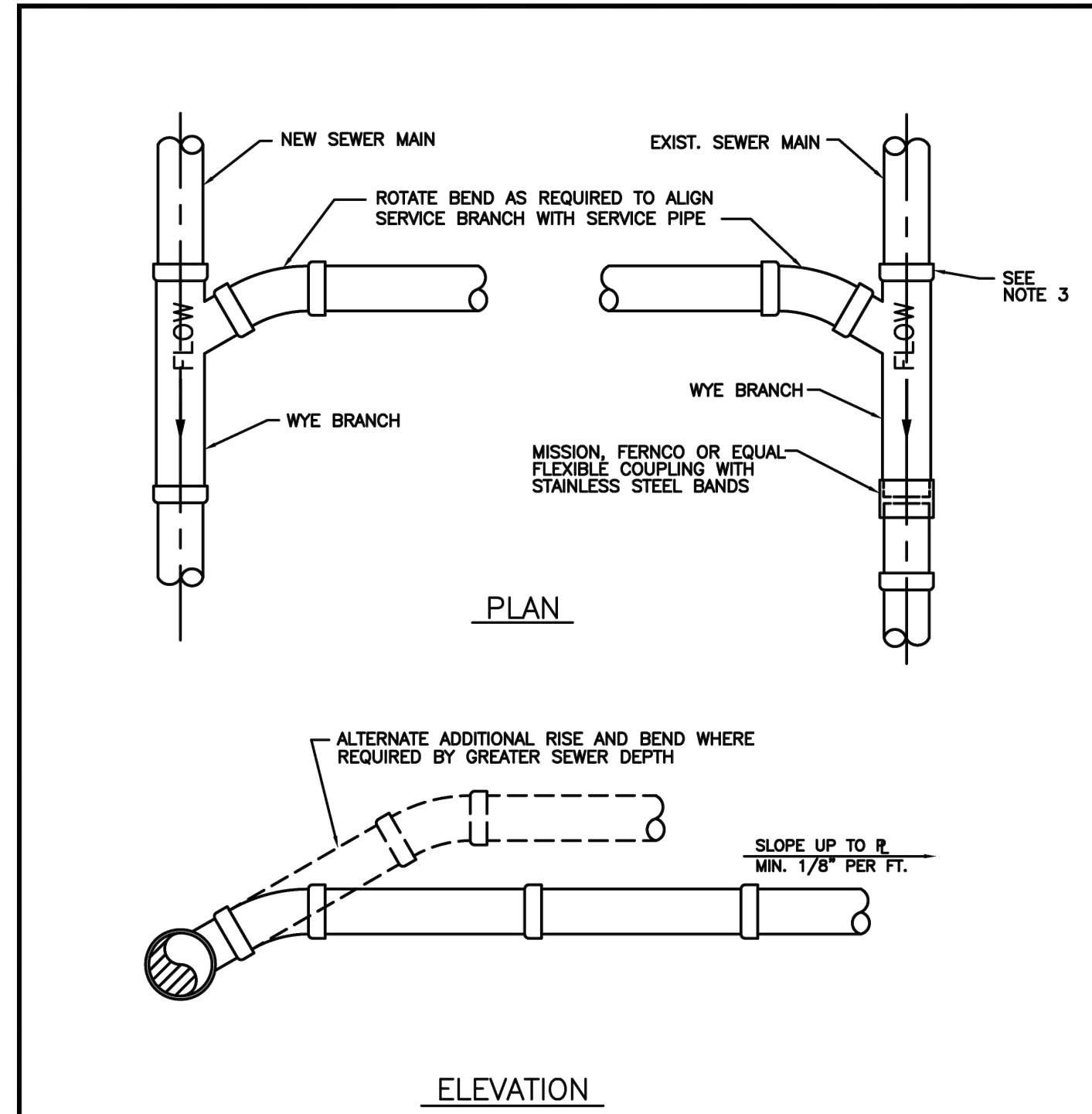
- NOTES:**
1. LETTERS ON COVER TO BE 3/8" HIGH, 1/4" TO 5/16" THICK AND FLUSH WITH TOP OF COVER.
  2. ALL BEARING SURFACES TO BE MACHINED.
  3. MINIMUM WEIGHTS: COVER - 160 LBS., TOTAL - 400 LBS.
  4. MANHOLE FRAME AND COVER SHALL BE U.S. FOUNDRY 485-C-ORS WITH THE WORDS "SANITARY SEWER" CAST INTO THE COVER.

ISSUED: 03/01/1994	DEPARTMENT OF PUBLIC UTILITIES STANDARD DETAIL	REVISED: 06/08/2014
DRAWN: EAM	MANHOLE FRAME AND COVER	DRAWING NO. S-06
APPROVED: XXX		



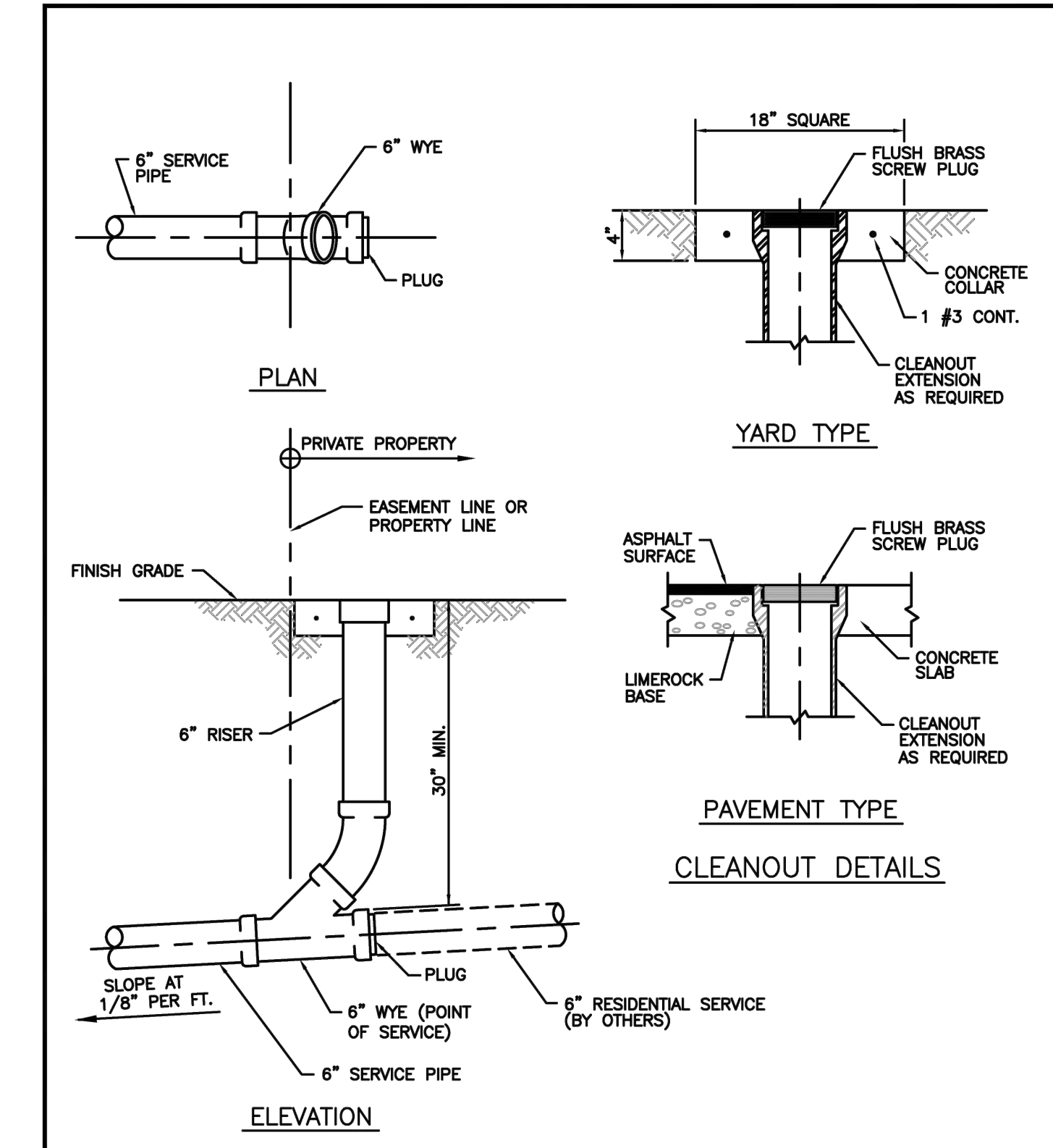
- NOTES:**
1. LETTERS ON COVER TO BE 3/8" HIGH, 1/4" TO 5/16" THICK AND FLUSH WITH TOP OF COVER.
  2. ALL BEARING SURFACES TO BE MACHINED.
  3. MINIMUM WEIGHTS: COVER - 160 LBS., TOTAL - 400 LBS.
  4. MANHOLE FRAME AND COVER SHALL BE U.S. FOUNDRY 485-C-ORS WITH THE WORDS "SANITARY SEWER" CAST INTO THE COVER.

ISSUED: 03/01/1994	DEPARTMENT OF PUBLIC UTILITIES STANDARD DETAIL	REVISED: 06/08/2014
DRAWN: EAM	NEW CONNECTION TO EXISTING MANHOLE	DRAWING NO. S-07
APPROVED: XXX		



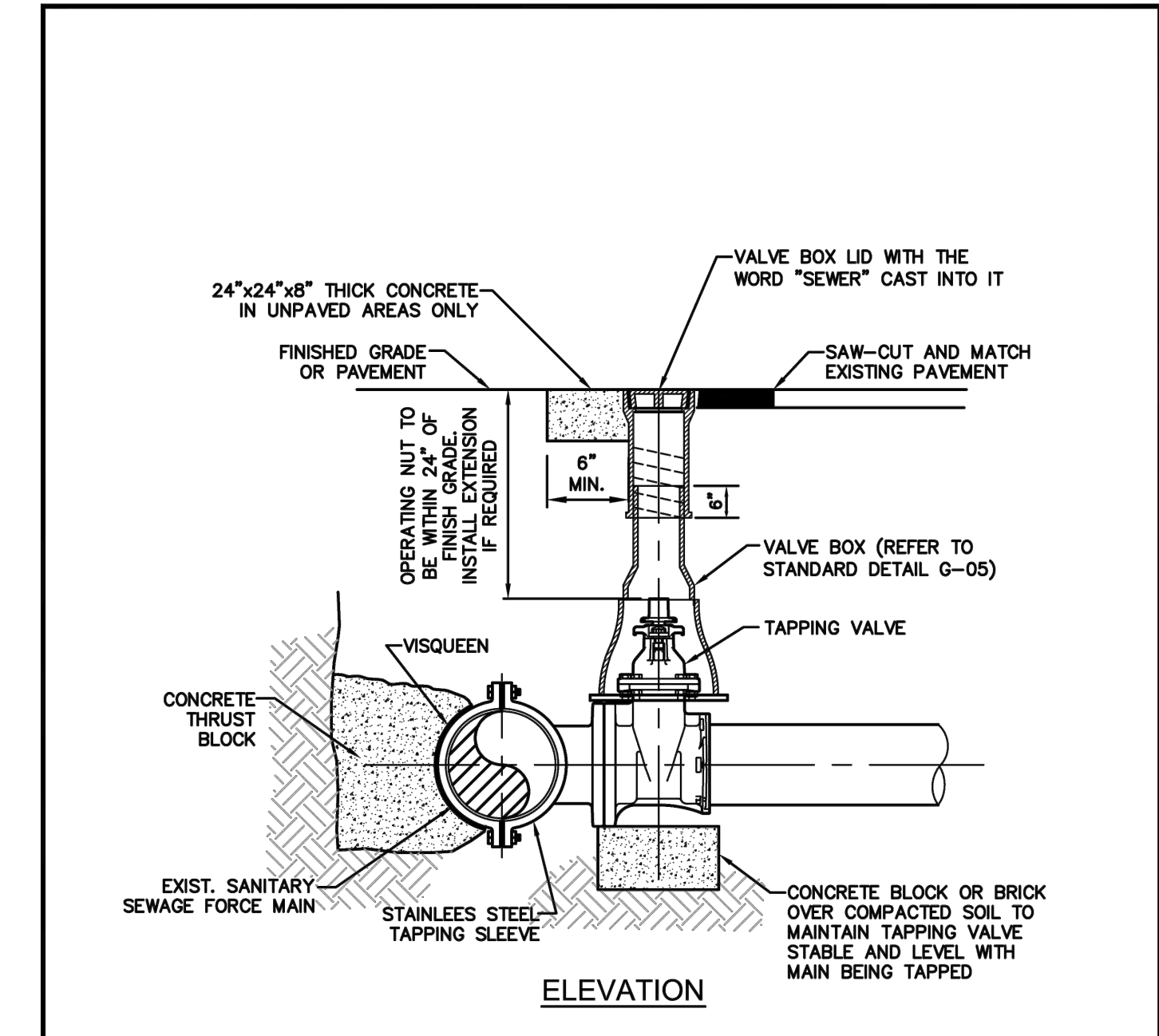
- NOTES:**
1. SINGLE SERVICE CONNECTIONS SHALL USE 6" PIPE AND FITTINGS.
  2. USE RISER CONNECTIONS WHERE INVERT OF SEWER IS GREATER THAN 7'-0" DEEP.
  3. WHERE BELL OF WYE AND SPIGOT OF EXISTING MAIN ARE NOT COMPATIBLE, USE A SECOND FLEXIBLE COUPLING.

ISSUED: 03/01/1994	DEPARTMENT OF PUBLIC UTILITIES STANDARD DETAIL	REVISED: 06/08/2014
DRAWN: EAM	WYE BRANCH CONNECTION	DRAWING NO. S-09
APPROVED: XXX		



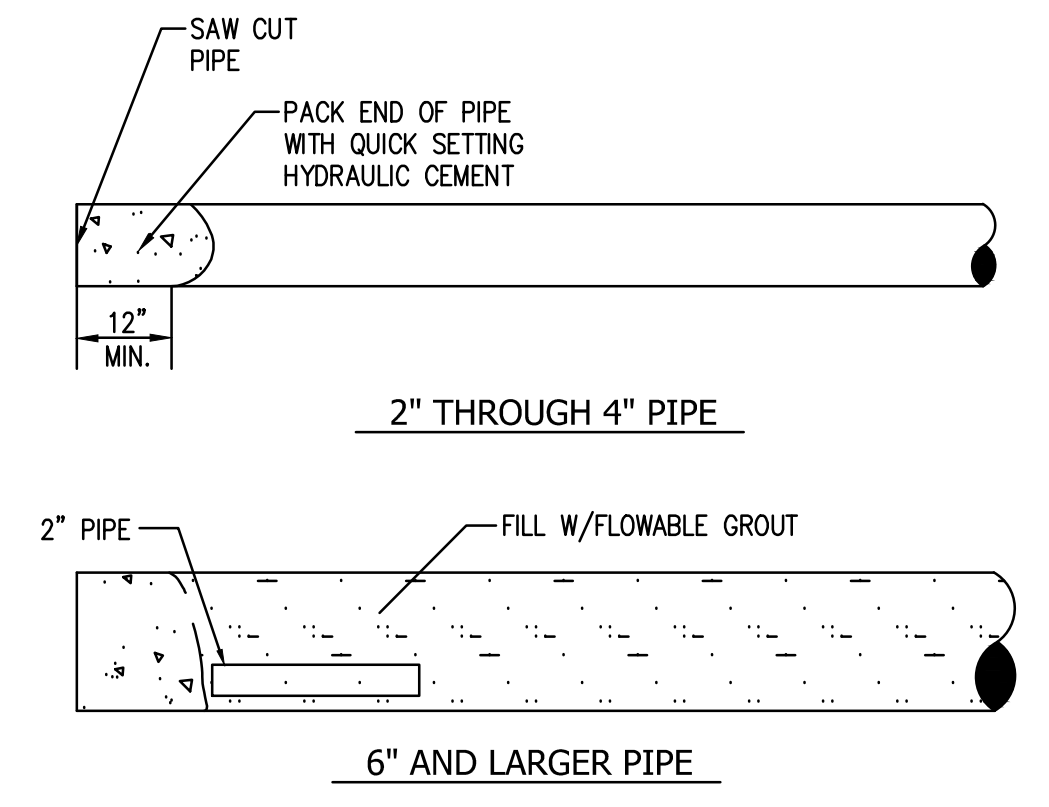
- NOTES:**
1. REFER TO STANDARD DETAIL 05-06, "TYPICAL TAPPING SLEEVE AND VALVE SETTING"
  2. REFER TO STANDARD DETAIL S-14, "PRIVATE FORCE MAIN TIE-IN AT PROPERTY LINE."

ISSUED: 03/01/1994	DEPARTMENT OF PUBLIC UTILITIES STANDARD DETAIL	REVISED: 06/08/2014
DRAWN: EAM	SEWER SERVICE CONNECTION AND CLEANOUT AT PROPERTY LINE	DRAWING NO. S-12
APPROVED: XXX		



- NOTES:**
1. REFER TO STANDARD DETAIL 05-06, "TYPICAL TAPPING SLEEVE AND VALVE SETTING"
  2. REFER TO STANDARD DETAIL S-14, "PRIVATE FORCE MAIN TIE-IN AT PROPERTY LINE."

ISSUED: 03/01/1994	DEPARTMENT OF PUBLIC UTILITIES STANDARD DETAIL	REVISED: 06/08/2014
DRAWN: EAM	FORCE MAIN CONNECTION	DRAWING NO. S-13
APPROVED: XXX		



- NOTES:**
1. INSTALL 2" PIPE AT BOTH ENDS OF LINE TO BE ABANDONED. GROUT IN PLACE WITH QUICK SETTING HYDRAULIC CEMENT.
  2. PUMP FLOWABLE GROUT FROM ONE END, OR INTERMEDIATE POINTS ALONG THE PIPELINE, UNTIL PIPE IS FILLED AS WITNESSED BY THE DISCHARGE FROM 2" PIPE(S).

**ABANDONED PIPE DETAIL**  
Scale: NTS

FINAL TAC  
ELEVATIONS ARE IN NAVD 88

**C08 UTILITY DETAILS**  
NOT TO SCALE

**HKS**

**ARCHITECT**  
HKS ARCHITECTS, INC.  
2020 SALZEDO STREET, 4TH FLOOR  
CORAL GABLES, FL 33154

**INTERIOR DESIGNER**  
HKS ARCHITECTS  
225 EAST ROBINSON ST, SUITE #405  
ORLANDO, FL 32801

**CIVIL & LANDSCAPE**  
CALVIN GUERINO & ASSOCIATES  
1800 ELLER DRIVE, SUITE 600  
FORT LAUDERDALE, FL 33316

**STRUCTURAL ENGINEER**  
GMS STRUCTURAL ENGINEERS  
14335 COMMERCE WAY  
MIAMI LAKES, FL 33016

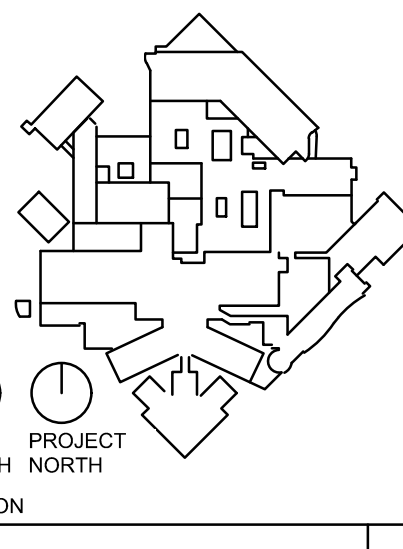
**MEP & FIRE PROTECTION**  
TLC ENGINEERING SOLUTIONS, INC.  
800 FAIRWAY DRIVE  
DEERFIELD BEACH, FL 33441

**TELECOM & EQUIPMENT**  
SMITH SECHMAN REID, INC.  
2995 SISCO DRIVE  
NASHVILLE, TN 37204

**OWNER**  
MEMORIAL HEALTHCARE SYSTEM  
3501 JOHNSON STREET  
HOLLYWOOD, FL 33021

**Memorial Regional Hospital**  
SURGICAL & CRITICAL CARE TOWER EXPANSION  
3501 JOHNSON STREET, HOLLYWOOD, FL 33021

**INTERIM REVIEW ONLY**  
These documents are incomplete, and are not intended for regulatory approval, permit, or construction purposes.  
Engineer: James D. Messick  
P.E. License No.: 70570  
Date: 07/03/2024



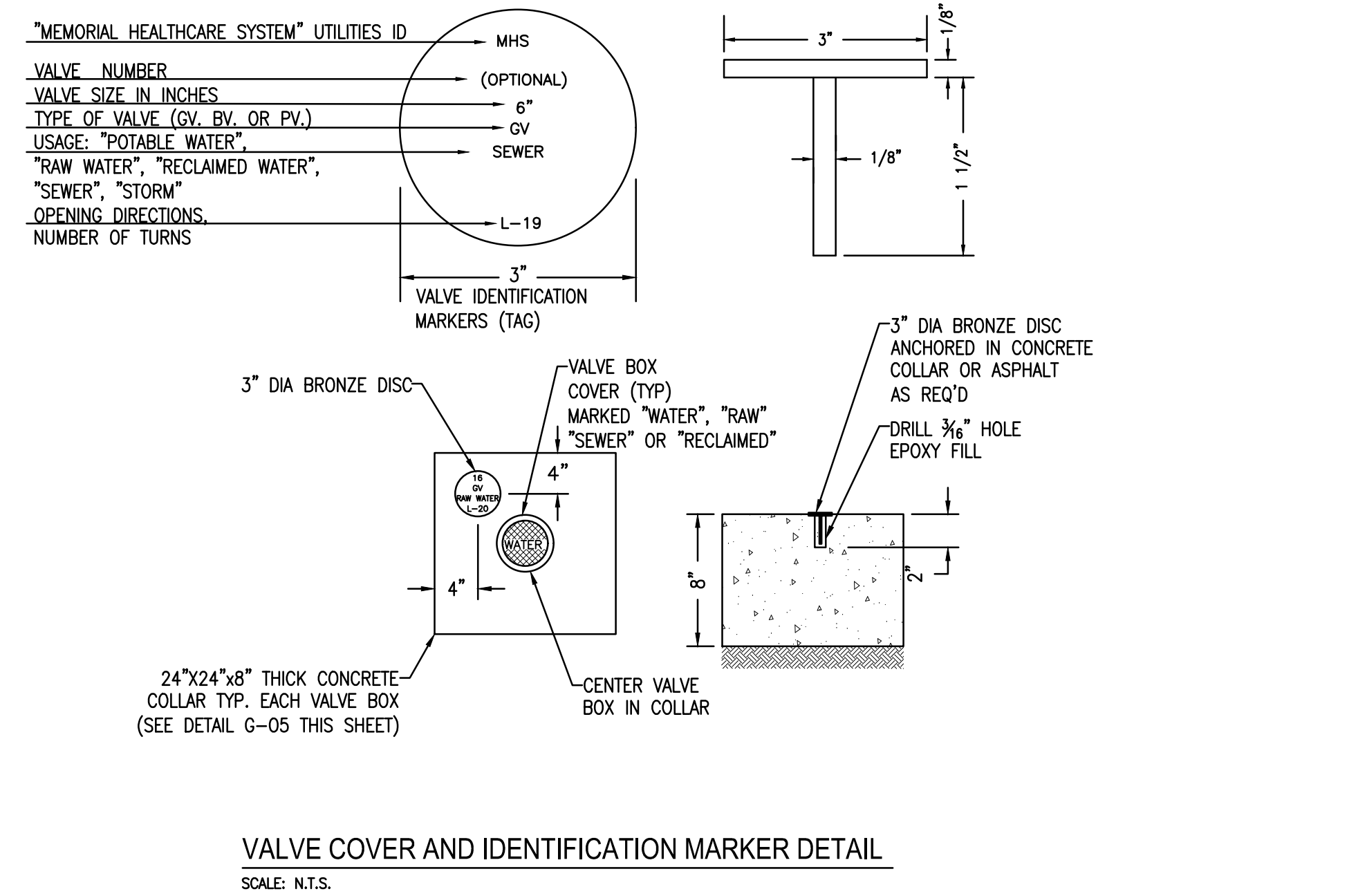
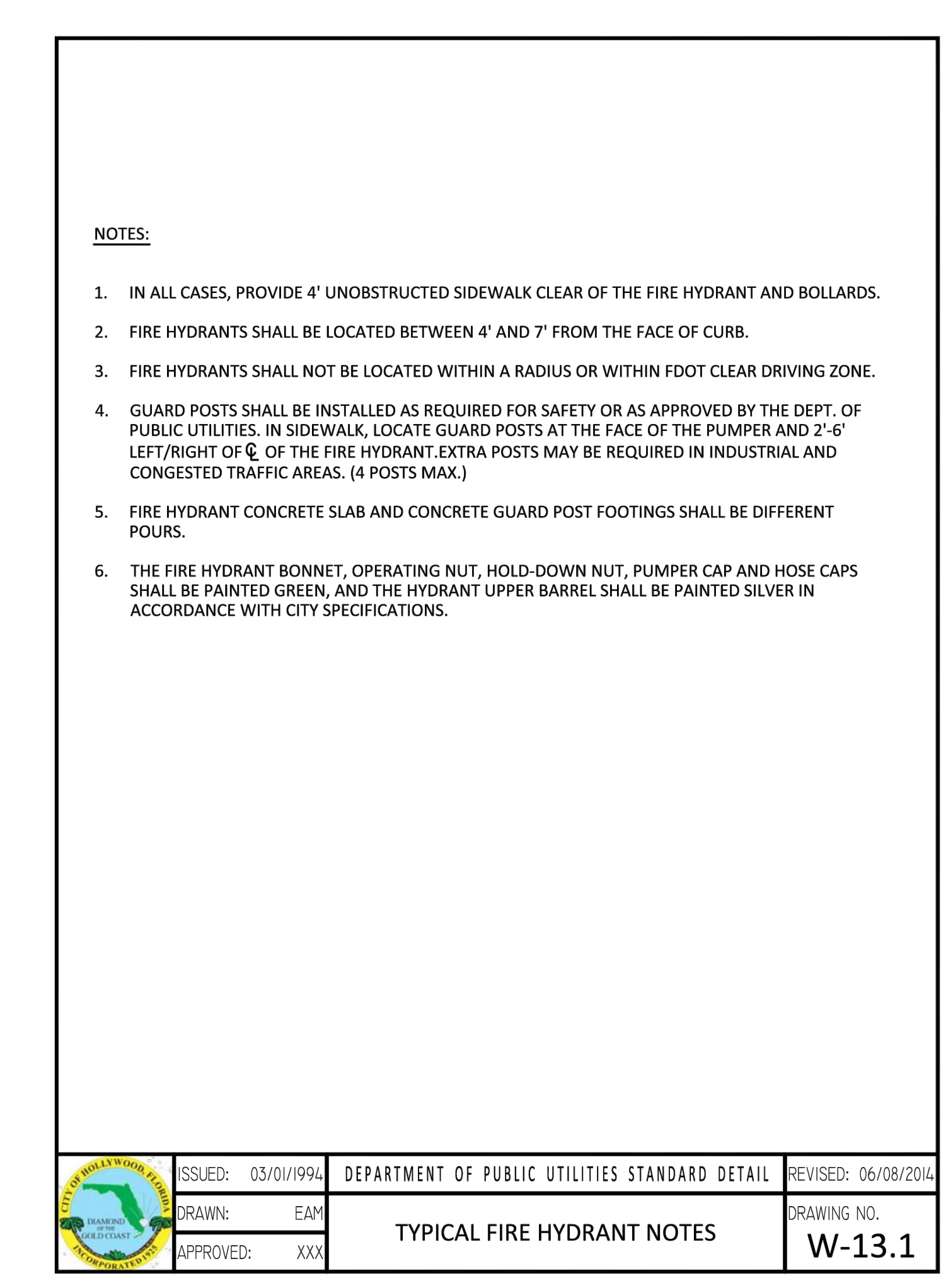
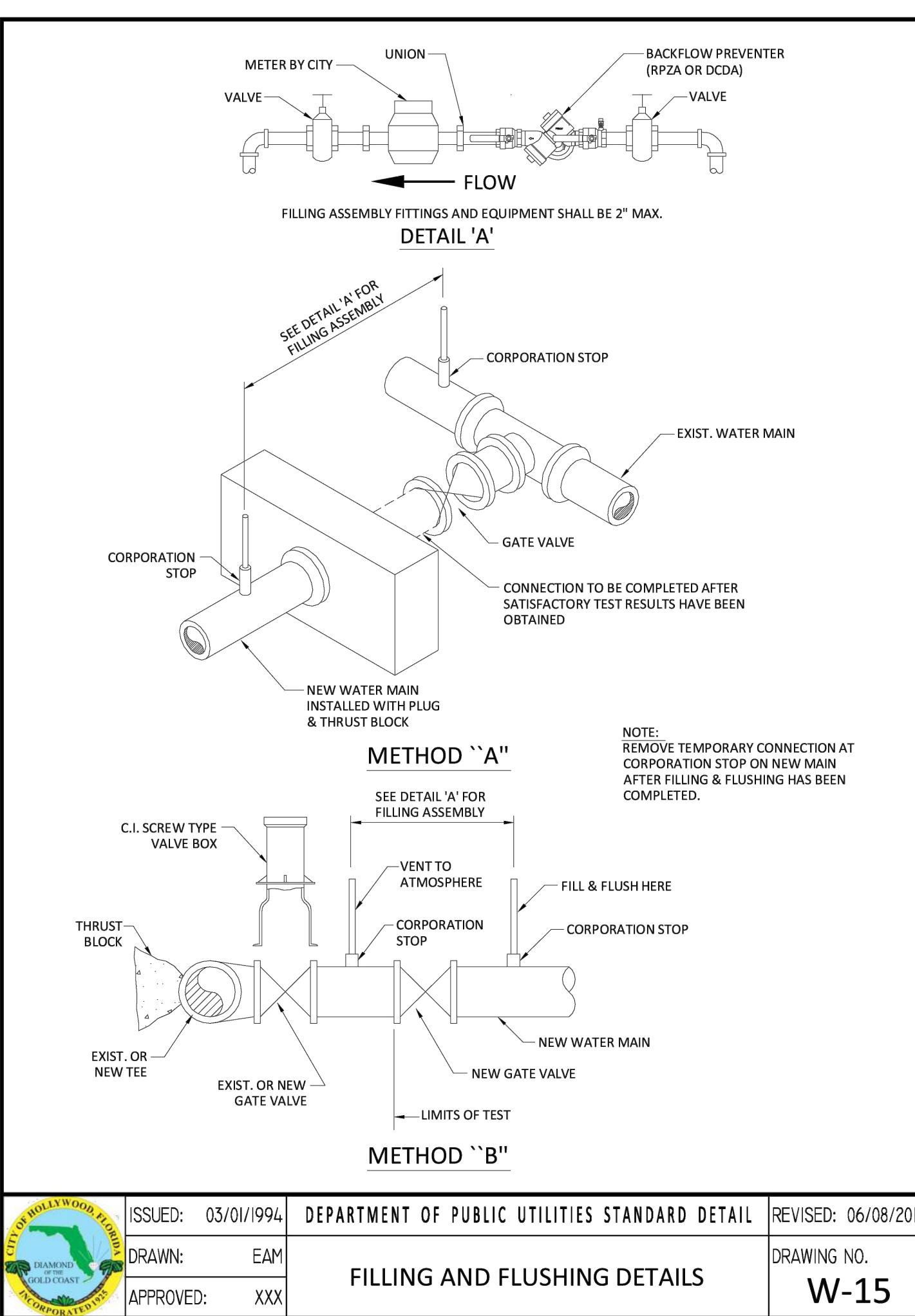
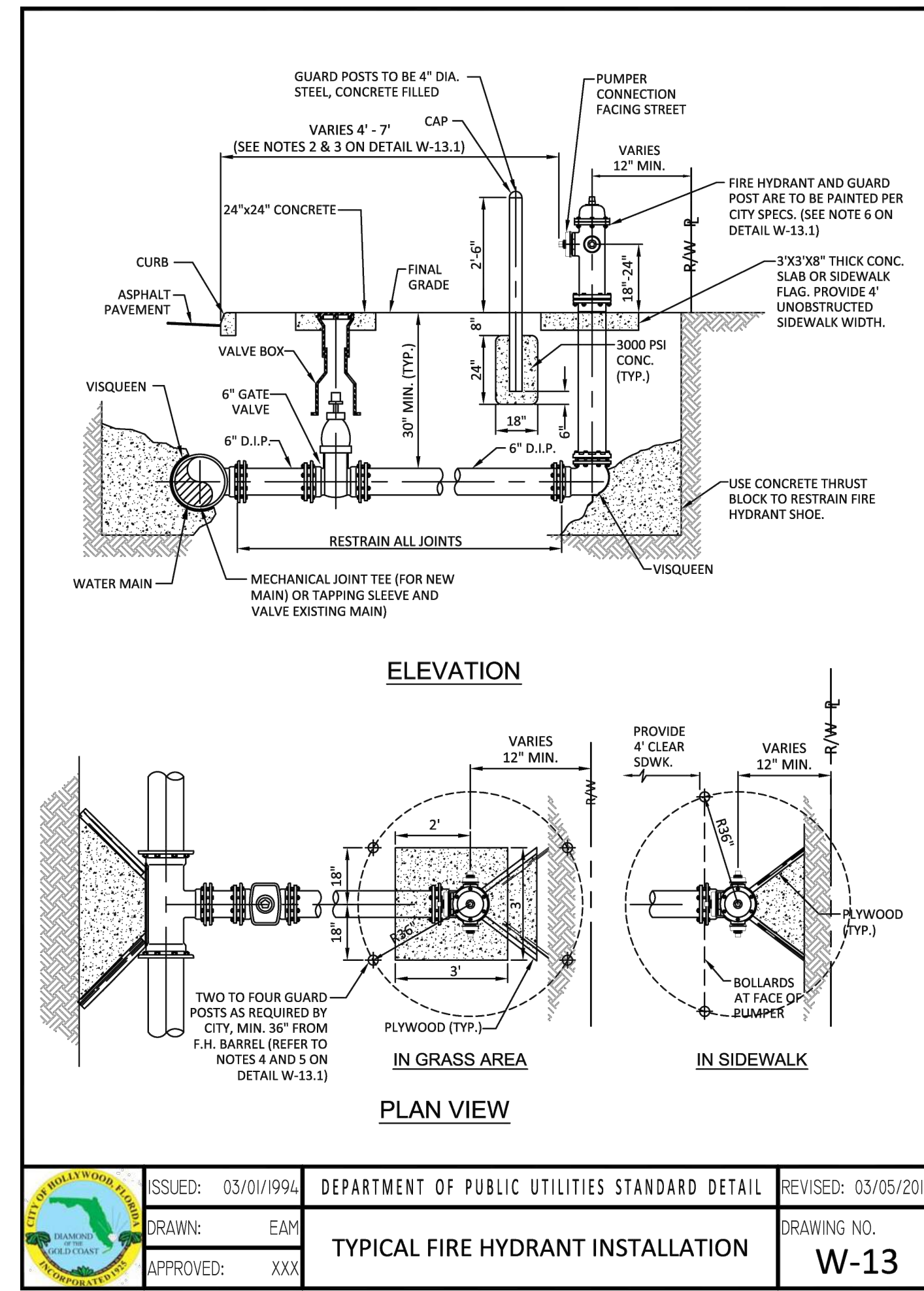
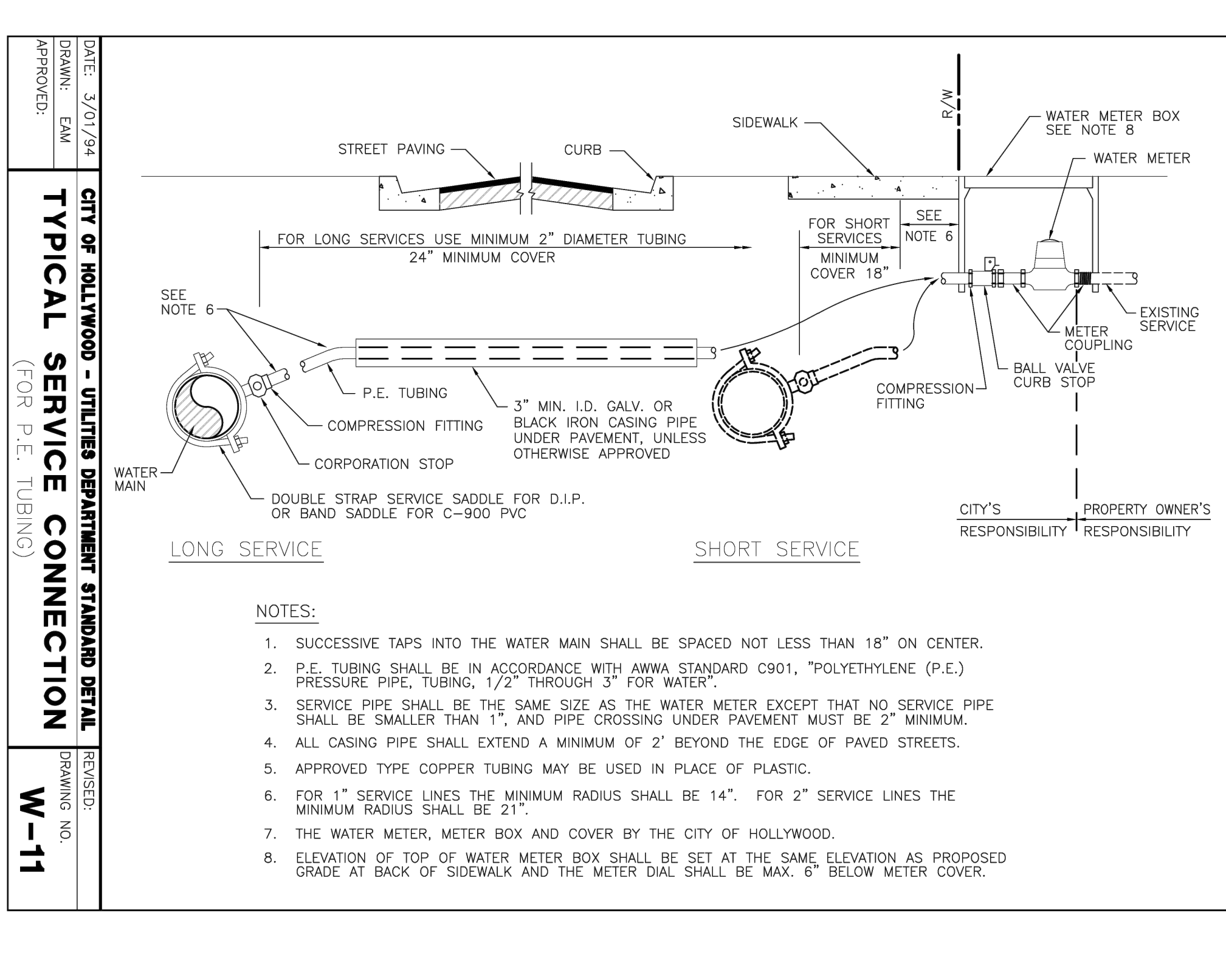
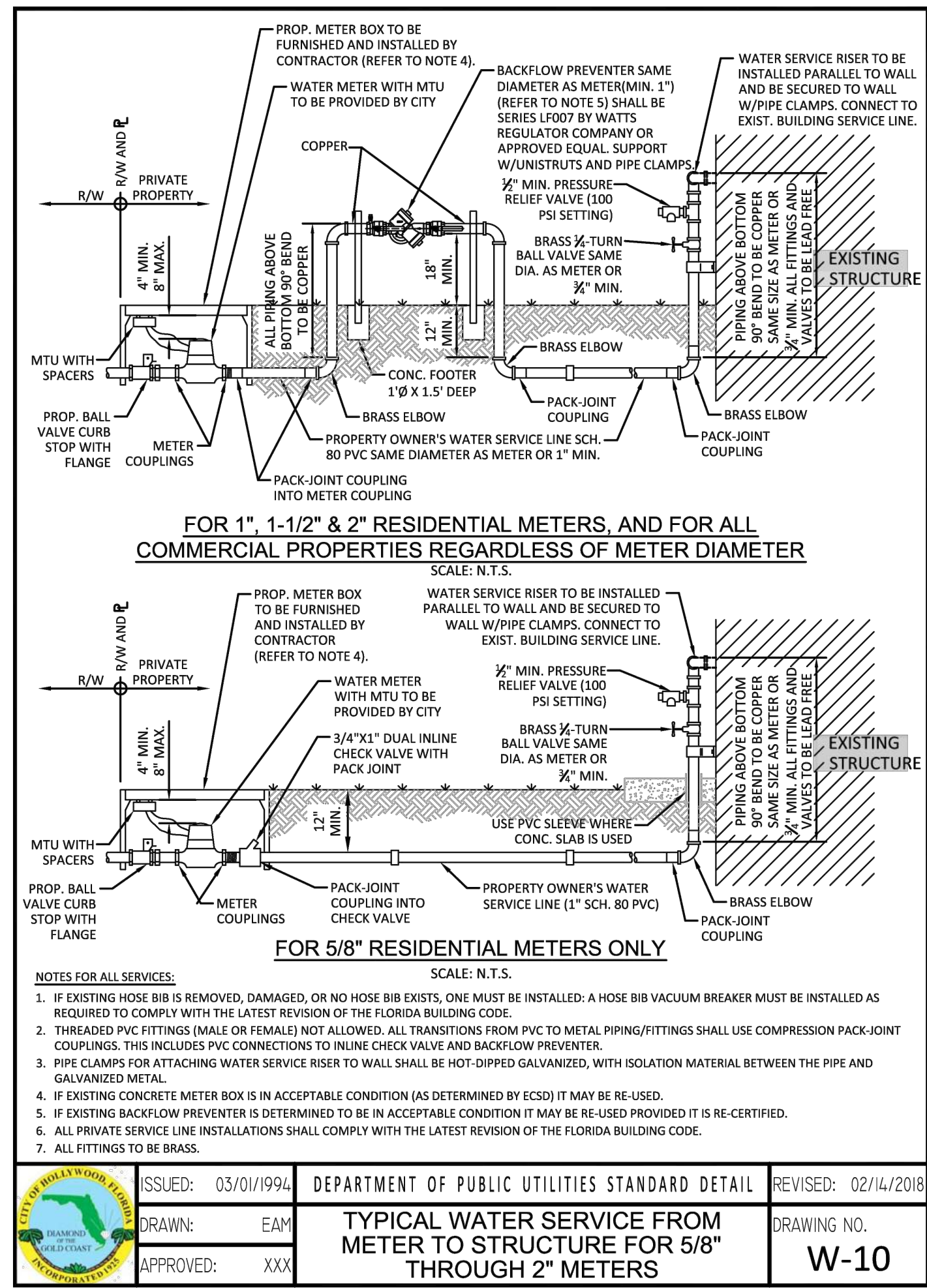
JAMES D. MESSICK, STATE OF FLORIDA, PROFESSIONAL ENGINEER, LICENSE NO. 70870.  
THIS ITEM HAS BEEN DIGITALLY SIGNED AND SEALED BY JAMES D. MESSICK ON THE DATE INDICATED HERE.  
PRINTED COPIES OF THIS DOCUMENT ARE NOT CONSIDERED SIGNED AND SEALED AND THE SIGNATURE MUST BE VERIFIED ON ANY ELECTRONIC COPIES.

HKS PROJECT NUMBER  
**23459.000**  
DATE  
**AUGUST 19, 2024**  
ISSUE  
**FINAL TAC**

SHEET TITLE  
**UTILITY DETAILS**

SHEET NO.  
**C08**





**ARCHITECT**  
HKS ARCHITECTS, INC.  
2020 SALZEDO STREET, 4TH FLOOR  
CORAL GABLES, FL 33154

**INTERIOR DESIGNER**  
HKS ARCHITECTS  
225 EAST ROBINSON ST, SUITE #405  
ORLANDO, FL 32801

**CIVIL & LANDSCAPE**  
CALVIN GUERDANO & ASSOCIATES  
1800 ELLER DRIVE, SUITE 600  
FORT LAUDERDALE, FL 33316

**STRUCTURAL ENGINEER**  
GMS STRUCTURAL ENGINEERS  
14335 COMMERCE WAY  
MIAMI LAKES, FL 33016

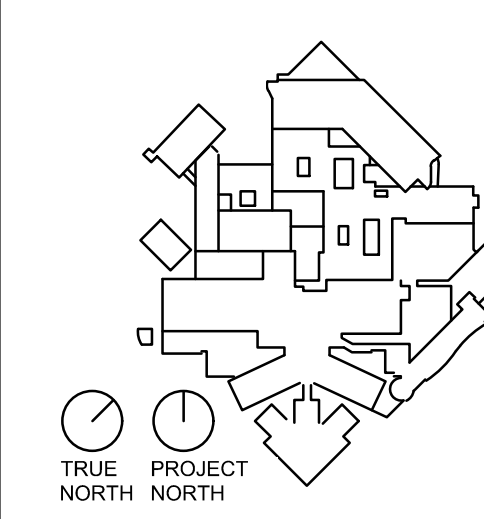
**MEP & FIRE PROTECTION**  
TLC ENGINEERING SOLUTIONS, INC.  
800 FAIRWAY DRIVE  
DEERFIELD BEACH, FL 33441

**TELECOM & EQUIPMENT**  
SMITH SECKMAN REED, INC.  
2995 SISCO DRIVE  
NASHVILLE, TN 37204

**OWNER**  
MEMORIAL HEALTHCARE SYSTEM  
3501 JOHNSON STREET  
HOLLYWOOD, FL 33021

**Memorial Regional Hospital**  
SURGICAL & CRITICAL CARE TOWER EXPANSION  
3501 JOHNSON STREET, HOLLYWOOD, FL 33021

**INTERIM REVIEW ONLY**  
These documents are incomplete, and are not intended for regulatory approval, permit, or construction purposes.  
Engineer: James D. Messick  
P.E. License No.: 70670  
Date: 07/03/2024

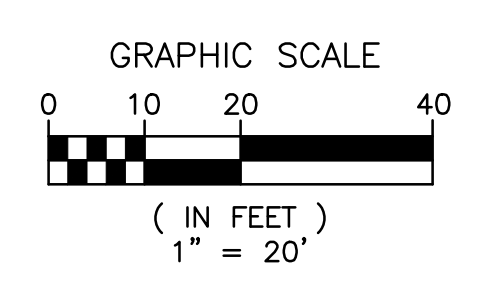
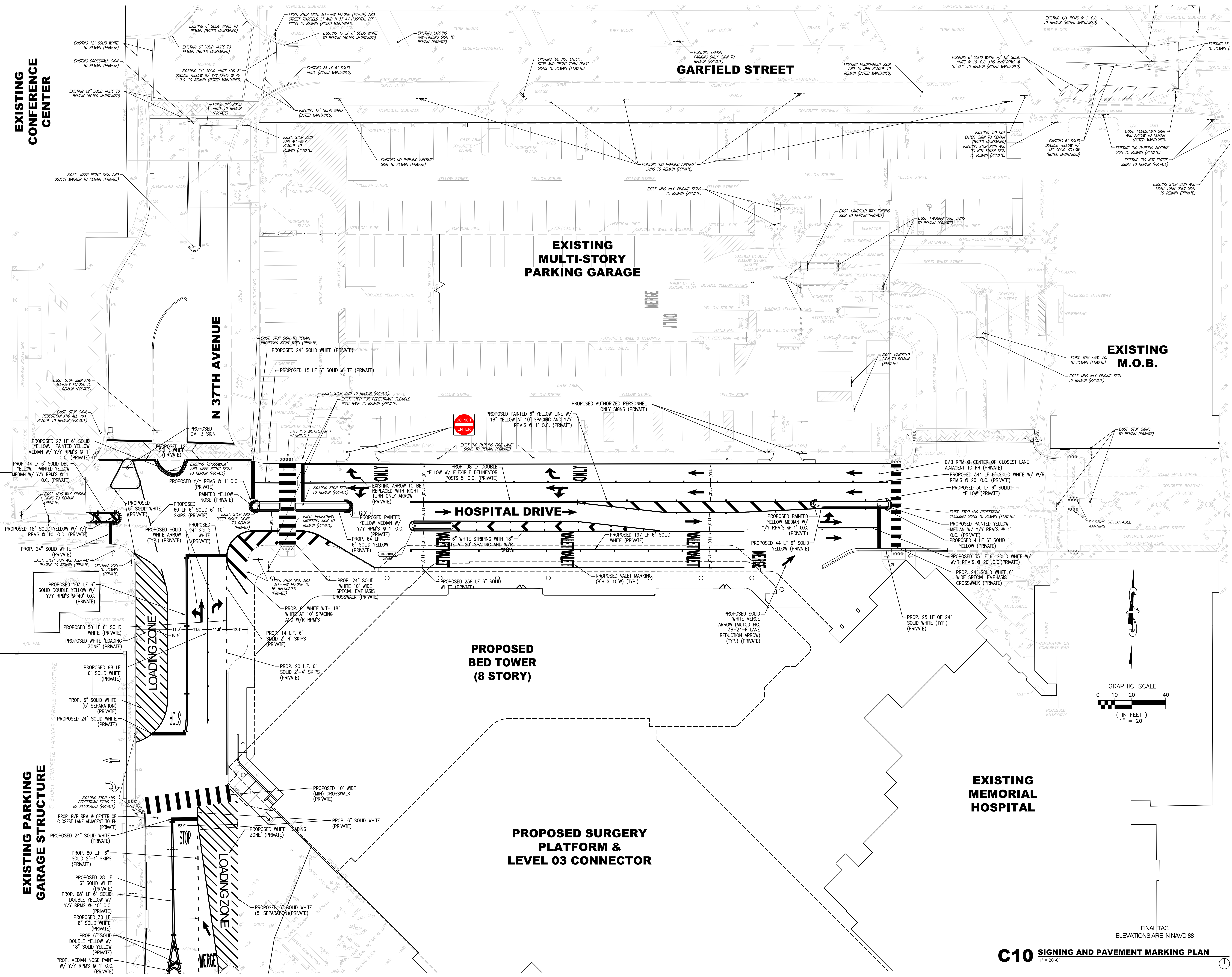


JAMES D. MESSICK, STATE OF FLORIDA, PROFESSIONAL ENGINEER, LICENSE NO. 70670.  
THIS ITEM HAS BEEN DIGITALLY SIGNED AND SEALED BY JAMES D. MESSICK ON THE DATE INDICATED HERE.  
PRINTED COPIES OF THIS DOCUMENT ARE NOT CONSIDERED SIGNED AND SEALED AND THE SIGNATURE MUST BE VERIFIED ON ANY ELECTRONIC COPIES.

HKS PROJECT NUMBER  
**23459.000**  
DATE  
**AUGUST 19, 2024**  
ISSUE  
**FINAL TAC**

SHEET TITLE  
**UTILITY DETAILS**  
SHEET NO.  
**C09**





C10 SIGNING AND PAVEMENT MARKING PLAN  
1" = 20'-0"

MODEL: P:\PROJECTS\2024\17-5580 (HRI) (OR EXPANSION)\CADD\FILESDRAWINGS\216560-C-SPM  
PRINT DATE: 10/23/2024 10:52:59 AM TEMPLATE VERSION: 21.03.2020(81)



Broward County Traffic Engineering Division Communications Notes

To be placed within plan set (Revised: 10/13/2015)

The agency responsible for maintenance of the traffic signals and related equipment is Broward County Traffic Engineering Division (BCTED). All system communications equipment, cabling and related material shall comply with Broward County's latest edition of the minimum standards as expressed in the "Standards and Specifications - Communication Infrastructure" document. Please refer to BCTED's Communications Policies and Procedures for additional information. Broward County Traffic Engineering Division will not accept any projects that do not meet these standards and specifications. If fiber optic pull boxes already exist at an intersection, no additional fiber optic pull boxes will need to be installed. For a copy of these standards refer to the Broward County web site at [www.broward.org/traffic](http://www.broward.org/traffic) under publications.

If there are Copper Interconnect Cables within your project limits or within 1500 feet of your project limits, contact the Communications Manager at [tccommunications@broward.org](mailto:tccommunications@broward.org) or 954-847-2745.

If there are Fiber Optic Cables within your project limits or within 1500 feet of your project limits contact the Communications Manager at [tccommunications@broward.org](mailto:tccommunications@broward.org) or 954-847-2745.

If there are cellular communications within your project limits, contact the Communications Manager at [tccommunications@broward.org](mailto:tccommunications@broward.org) or 954-847-2745.

All BCTED communications cables/conduit shall be located a minimum of 48 hours in advance.

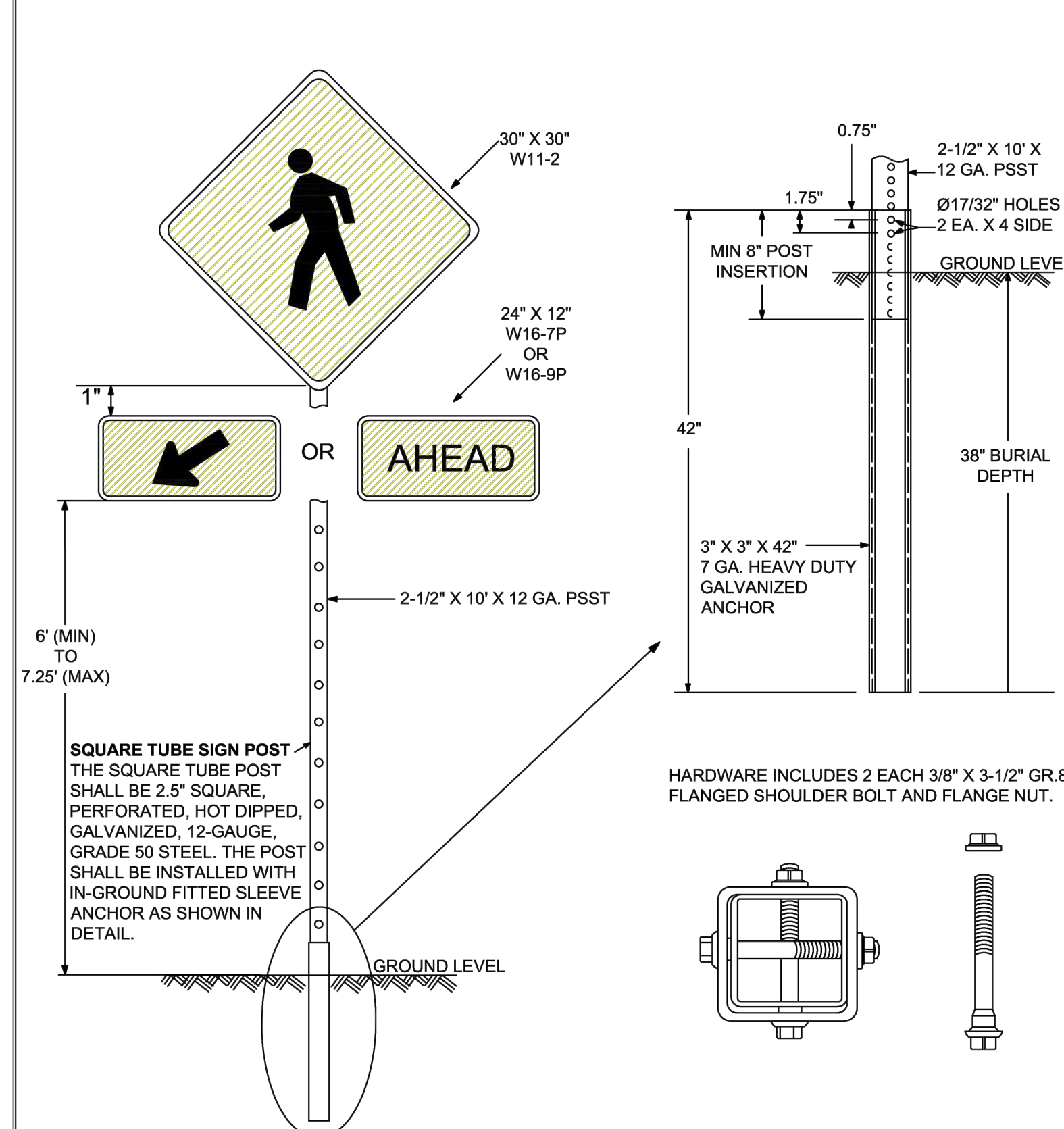
Broward County Traffic Engineering Division  
Procedure for Notification of Communication Disruption

**Copper Interconnect Cable Notification Contact Person**  
When communications to an intersection must be disrupted by a Contractor to perform work, the Contractor shall provide two day advance notice in writing to the Broward County Traffic Engineering Division. This notification shall be conveyed via electronic mail (email) to the Traffic Signal Technician III at [tccommunications@broward.org](mailto:tccommunications@broward.org). Notification shall include contact person, telephone number, purpose, location and duration. The disruption shall last for no more than 3 consecutive business days. Where possible, the disruption shall be during off peak hours beginning at 9:00am and ending at 3:00pm.

**Fiber Optic Cable Notification Contact Person**  
When communications to an intersection must be disrupted by a Contractor to perform work, the Contractor shall provide two day advance notice in writing to the Communications Manager at [tccommunications@broward.org](mailto:tccommunications@broward.org). Notification shall be conveyed via electronic mail (email) to the Communications Manager at [tccommunications@broward.org](mailto:tccommunications@broward.org). Notification shall include contact person, telephone number, purpose, location and duration. The disruption shall last for no more than 3 consecutive business days. Where possible, the disruption shall be during off peak hours beginning at 9:00am and ending at 3:00pm.

Include the following in any notice of utility ownership or within a "Utility Owners/Contact Person" table:  
Interconnect Communications Cables - (Robert Blount) Broward County Traffic Engineering Division (BCTED) 954-847-2745

W11-2 (30"x 30") & SUPPLEMENTAL (24"x12") SIGN ASSEMBLY



1. SCHOOL ZONE AND PEDESTRIAN SIGNS SHALL BE COMPRISED OF REFLECTIVE FLUORESCENT YELLOW-GREEN SHEETING. (SEE BCTED TECHNICAL POLICY MEMO #TPM-16-001 ON BCTED WEBSITE)  
2. NOT FOR USE WITH RECTANGULAR RAPID FLASHING BEACONS

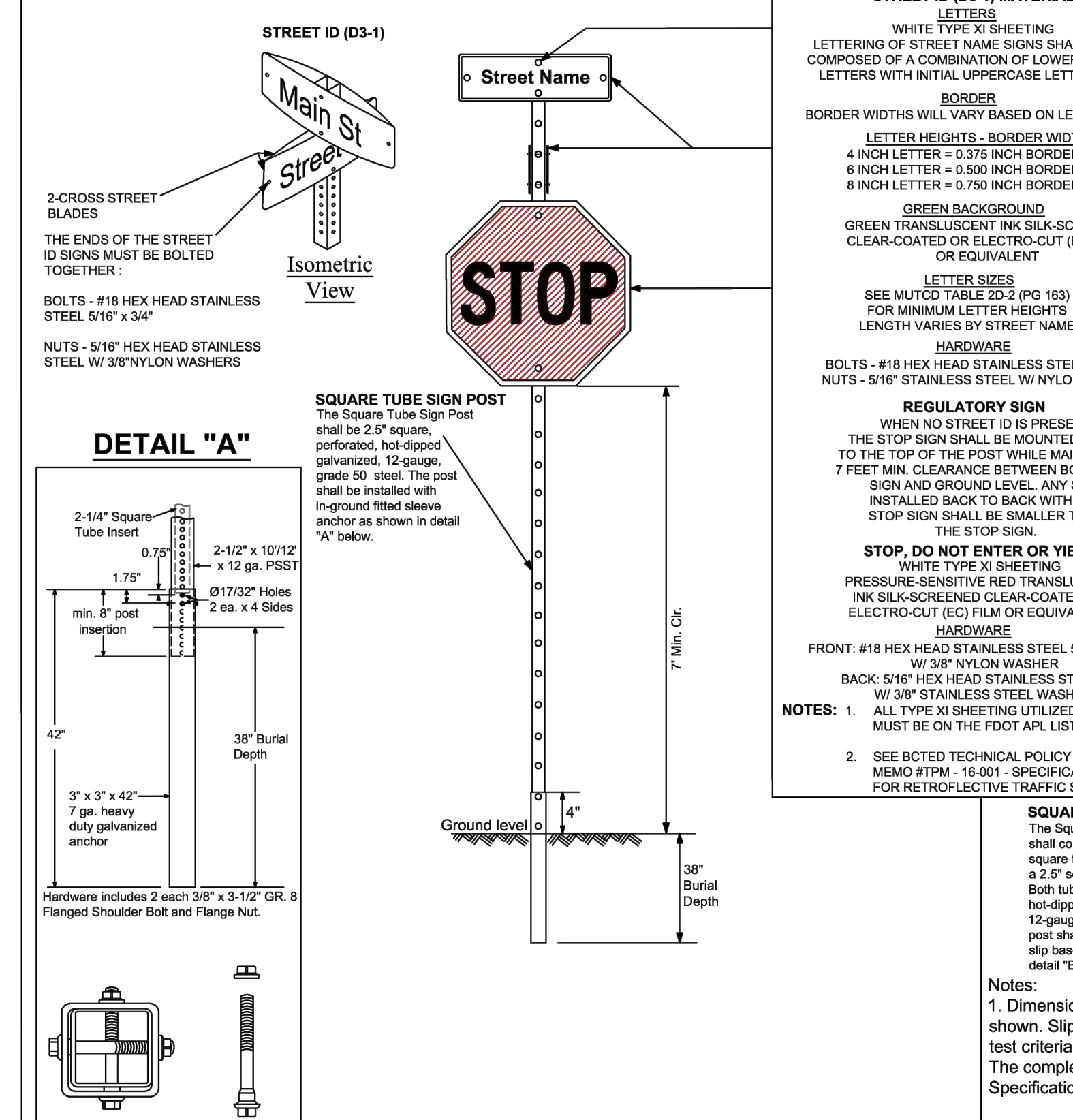
REVISIONS table with columns for DATE, DESCRIPTION, and UPDATED POST SIZE.

PUBLIC WORKS DEPARTMENT TRAFFIC ENGINEERING DIVISION  
DESIGN BY: YVES DANJOU, P.E.  
DRAWN BY: STEPHON RAMOUTAR  
CHECKED BY: ANDREW SEBO, P.E., PTOE

GROUND SIGN ASSEMBLY DETAILS  
SHEET NO. 1 OF 1

FOR SIGN ASSEMBLIES WITH MAXIMUM 8.75 SQUARE FOOT PANEL AREA

FOR SIGN ASSEMBLIES WITH GREATER THAN 8.75 SQUARE FOOT PANEL AREA WITH SUPPLEMENTAL SIGN



REVISIONS table with columns for DATE, DESCRIPTION, and UPDATED POST SIZE.

PUBLIC WORKS DEPARTMENT TRAFFIC ENGINEERING DIVISION  
DESIGN BY: CARMELO CARATTOZZOLO, P.E.  
DRAWN BY: STEPHON RAMOUTAR  
CHECKED BY: CARMELO CARATTOZZOLO, P.E.

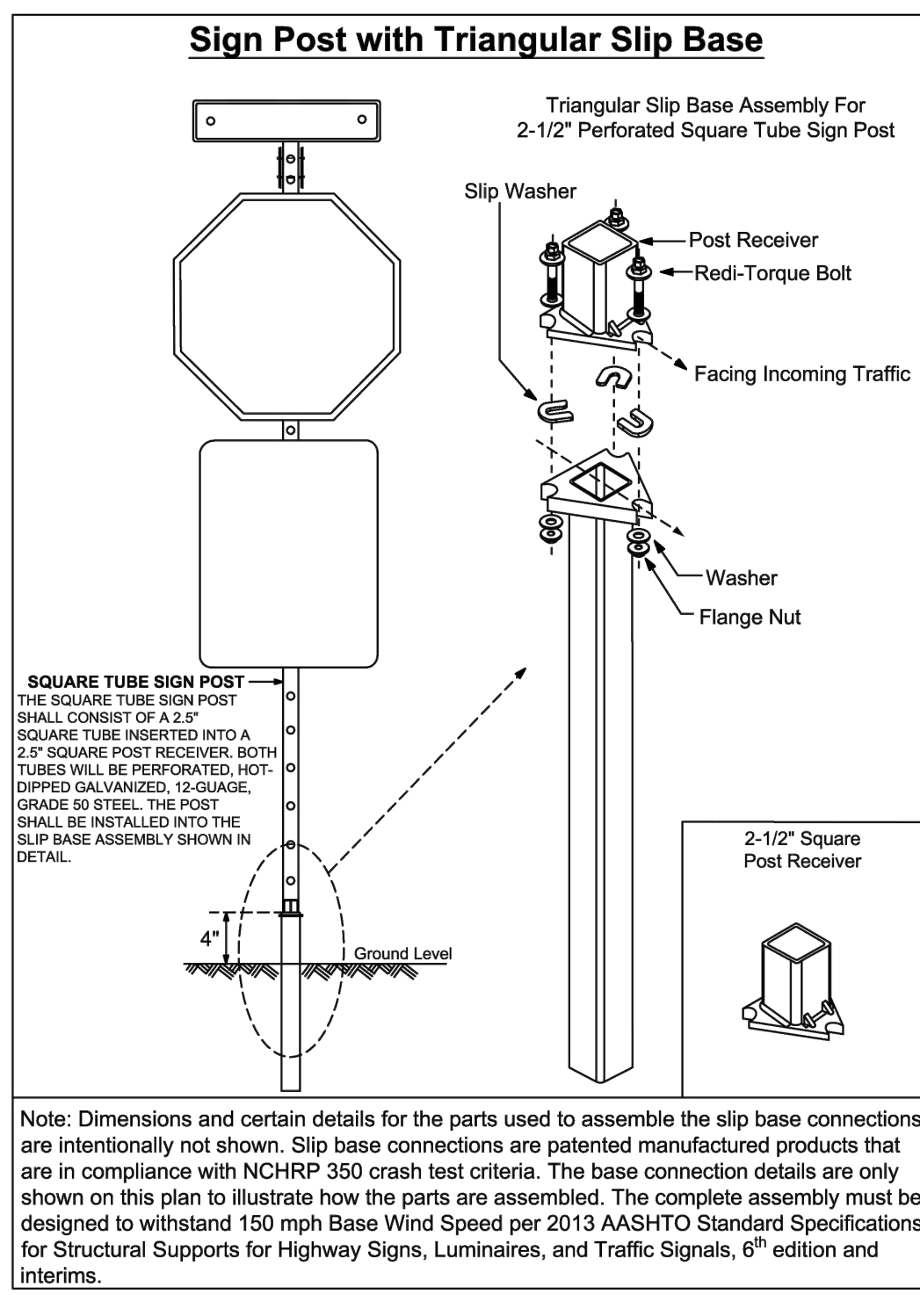
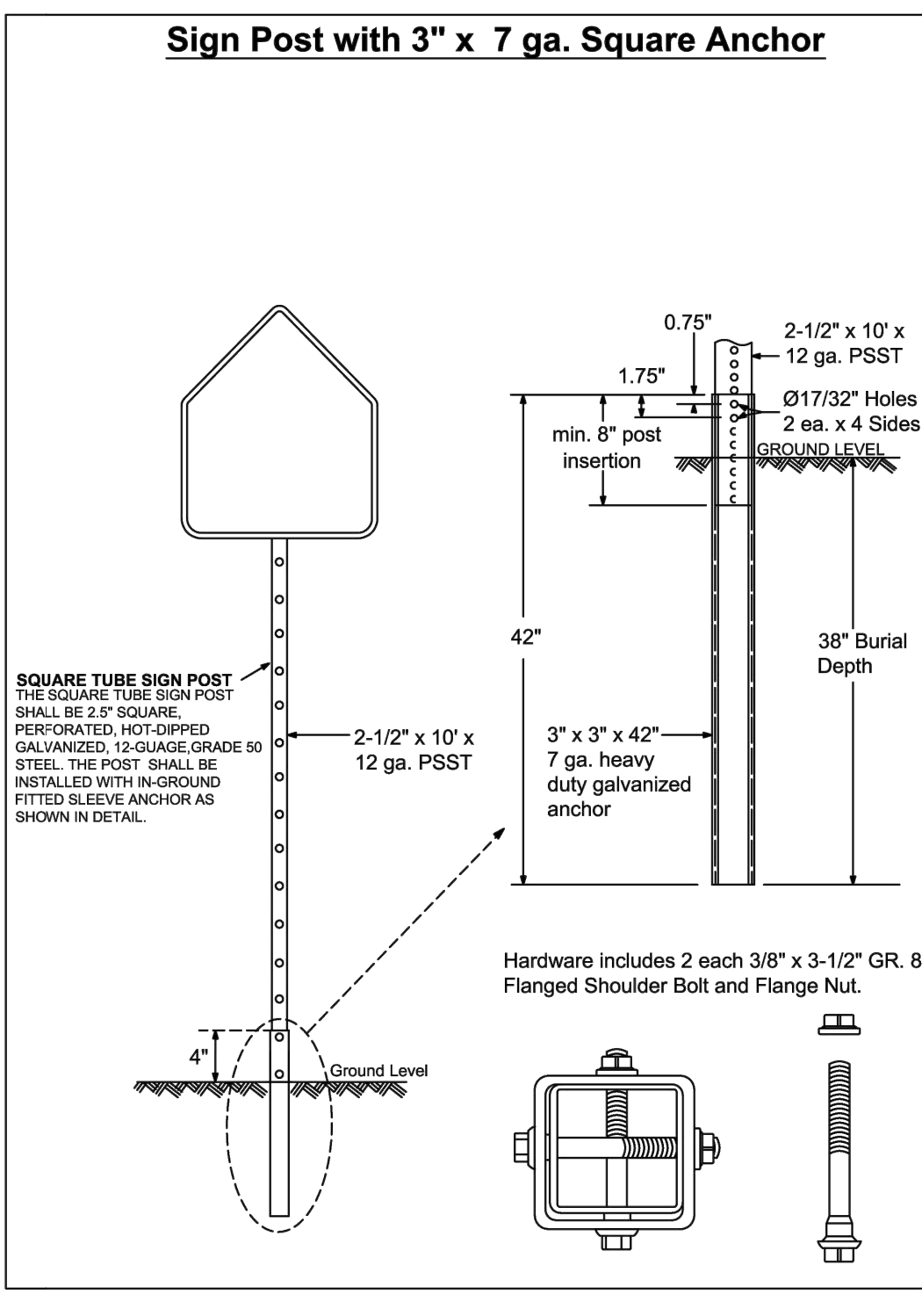
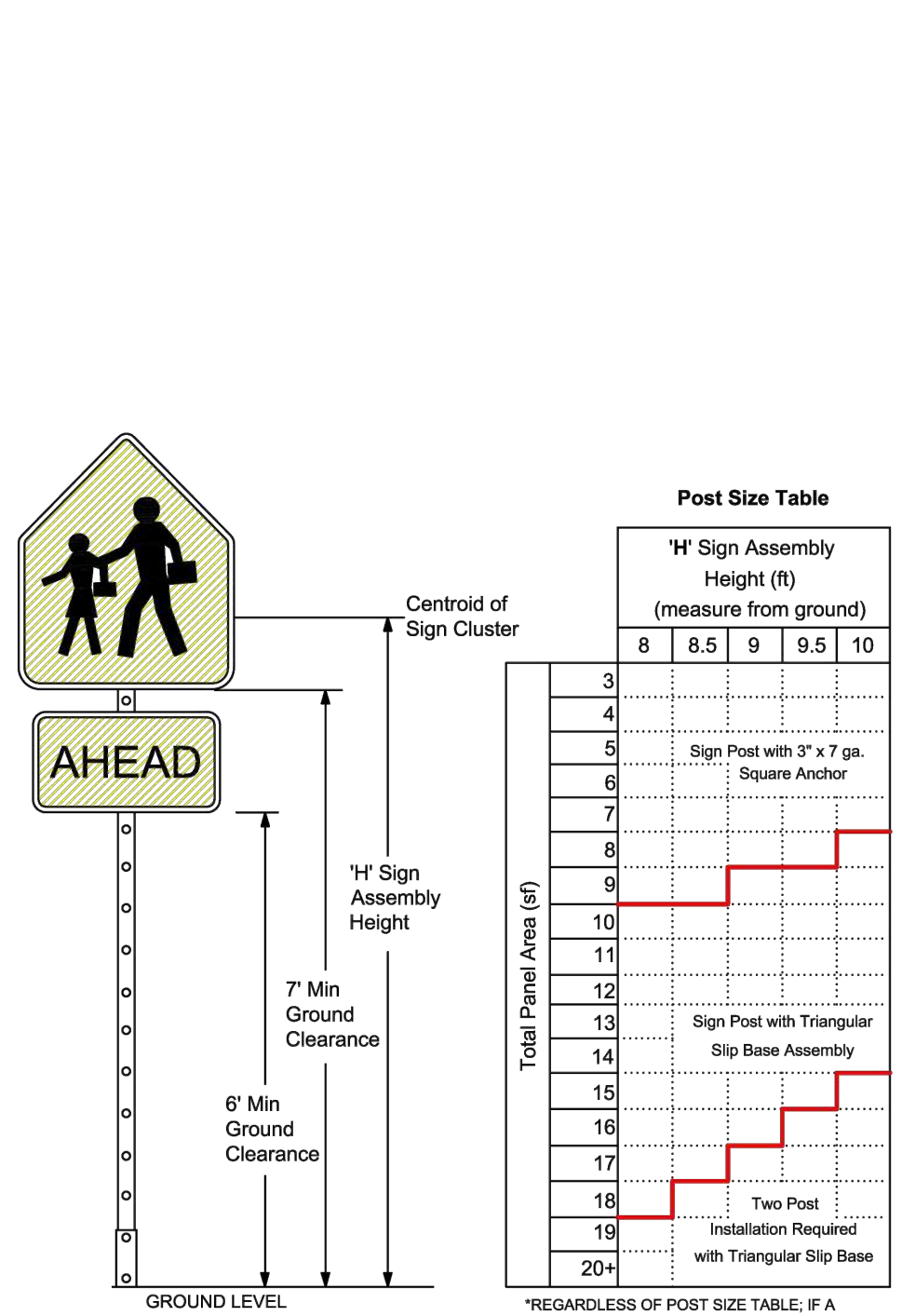
STOP SIGN AND STREET IDENTIFICATION ASSEMBLY TYPICAL DETAILS  
SHEET NO. 1 OF 1

STOP SIGN AND STREET IDENTIFICATION ASSEMBLY TYPICAL DETAILS  
SHEET NO. 1 OF 1

PUBLIC WORKS DEPARTMENT TRAFFIC ENGINEERING DIVISION  
DESIGN BY: CARMELO CARATTOZZOLO, P.E.  
DRAWN BY: STEPHON RAMOUTAR  
CHECKED BY: CARMELO CARATTOZZOLO, P.E.

STOP SIGN AND STREET IDENTIFICATION ASSEMBLY TYPICAL DETAILS  
SHEET NO. 1 OF 1

GUIDE TO USE THIS STANDARD:  
1. Calculate the Total Panel Area and the centroid 'C' for an individual sign or a sign cluster.  
2. Determine the height 'H' from the groundline for the individual sign or the cluster.  
3. Consult the Post Size Table and find the intersection point.  
4. Design the post and the foundation according to the required Post Size and Assembly Details.



REVISIONS table with columns for DATE, DESCRIPTION, and UPDATED POST SIZE.

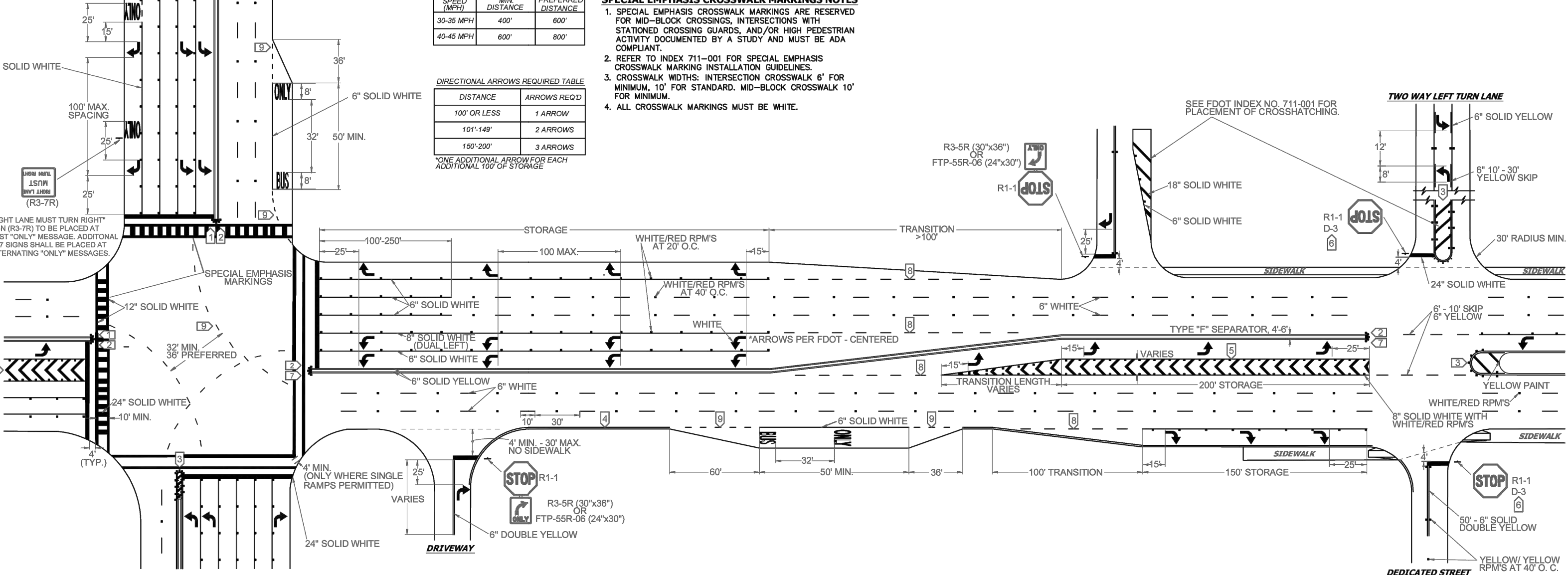
PUBLIC WORKS DEPARTMENT TRAFFIC ENGINEERING DIVISION  
DESIGN BY: YVES DANJOU, P.E.  
DRAWN BY: STEPHON RAMOUTAR  
CHECKED BY: ANDREW SEBO, P.E., PTOE

GROUND SIGN ASSEMBLY DETAILS  
SHEET NO. 1 OF 1

REVISIONS table with columns for DATE, DESCRIPTION, and UPDATED POST SIZE.

PUBLIC WORKS DEPARTMENT TRAFFIC ENGINEERING DIVISION  
DESIGN BY: YVES DANJOU, P.E.  
DRAWN BY: STEPHON RAMOUTAR  
CHECKED BY: ANDREW SEBO, P.E., PTOE

GROUND SIGN ASSEMBLY DETAILS  
SHEET NO. 1 OF 1



NOTES, LEGEND, and EDGE LINE DETAILS sections for pavement markings and signs.

REVISIONS table with columns for DATE, DESCRIPTION, and UPDATED POST SIZE.

PUBLIC WORKS DEPARTMENT TRAFFIC ENGINEERING DIVISION  
DESIGN BY: CARMELO CARATTOZZOLO, P.E.  
DRAWN BY: STEPHON RAMOUTAR  
CHECKED BY: CARMELO CARATTOZZOLO, P.E.

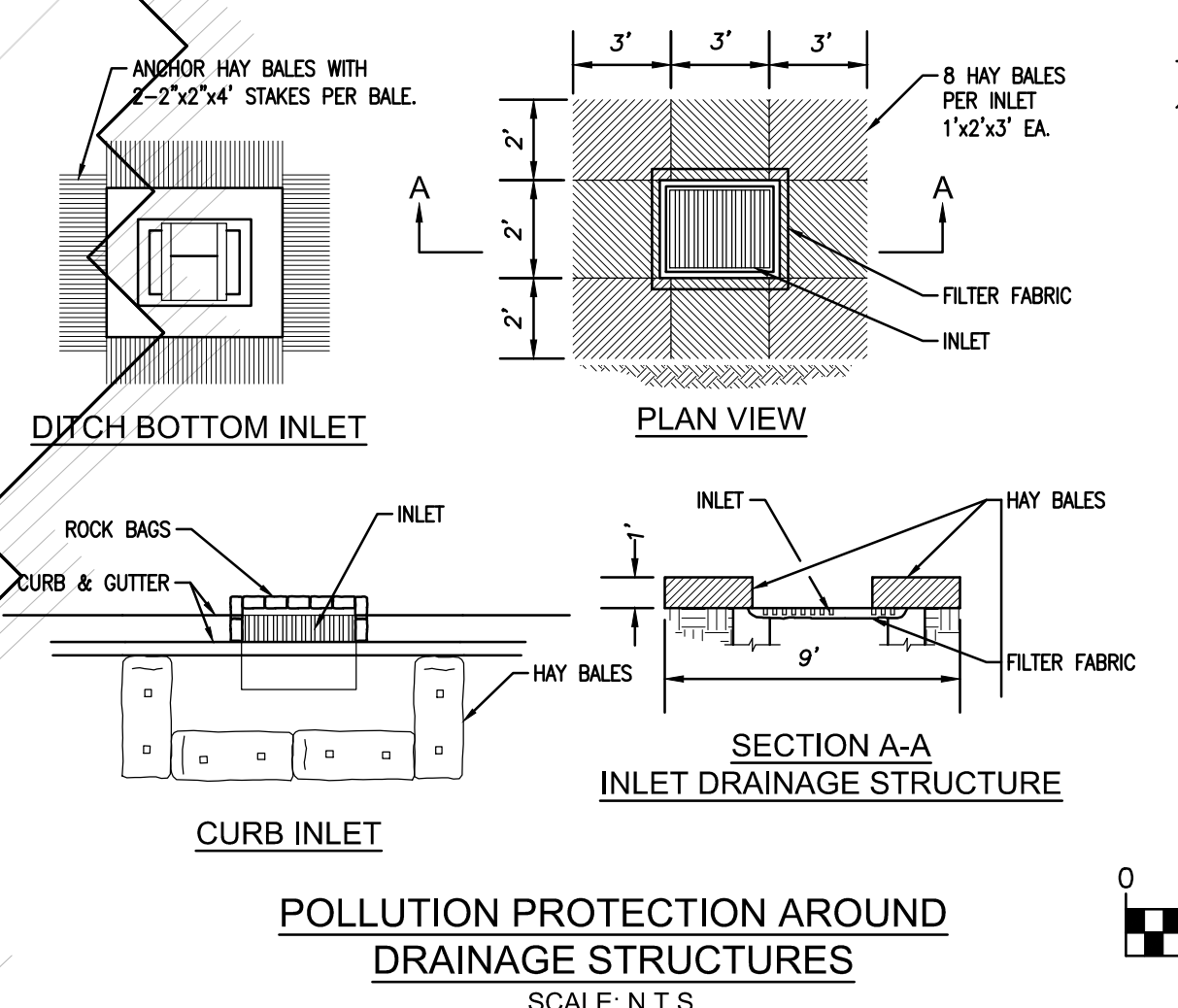
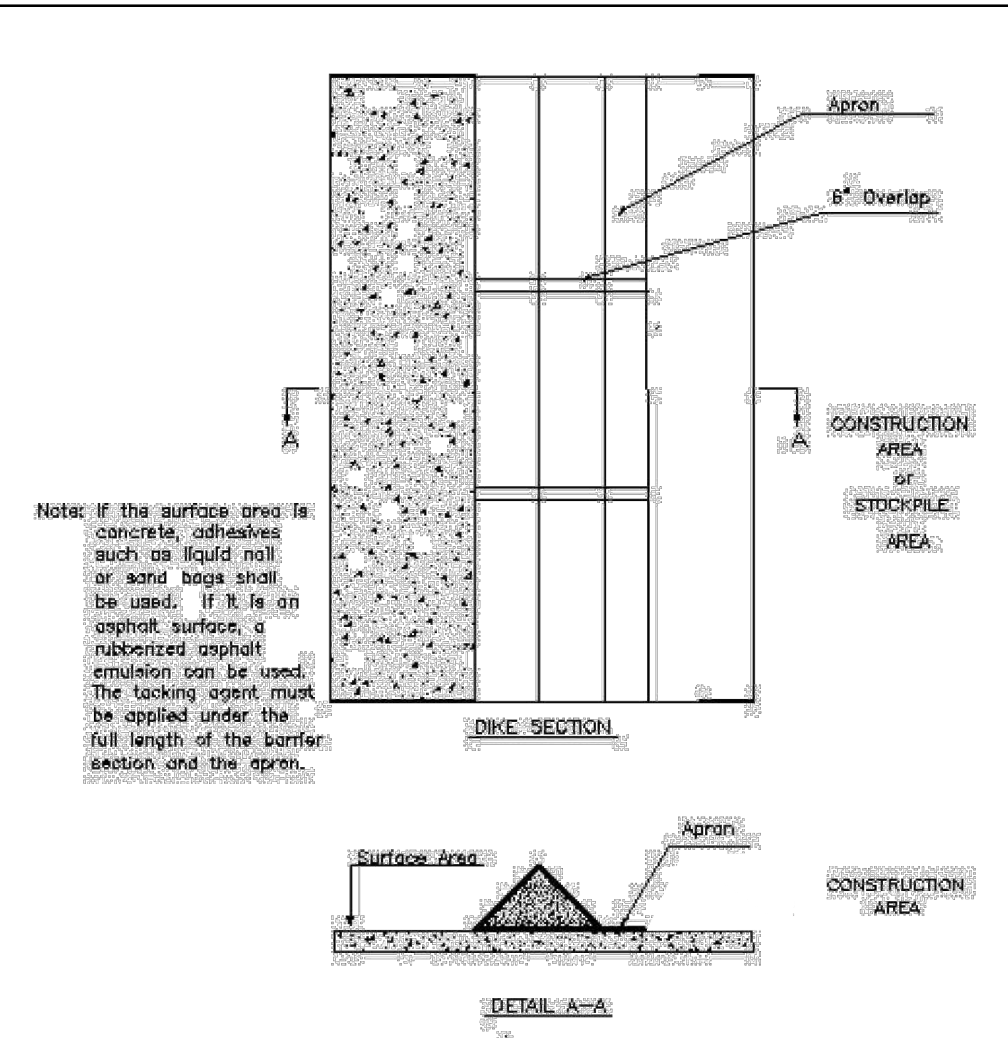
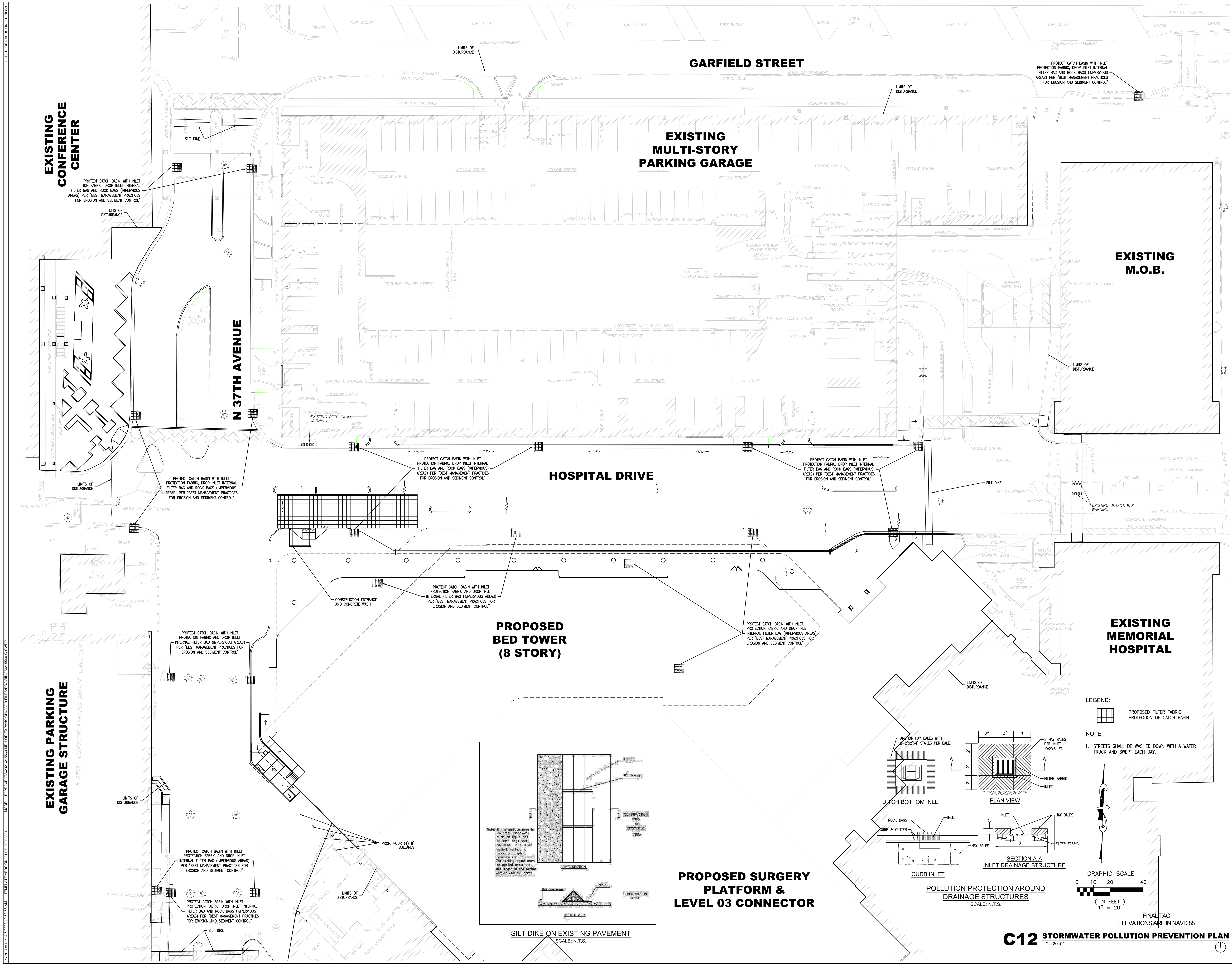
PAVEMENT MARKINGS AND SIGNS DETAILS  
SHEET NO. 1 OF 1

REVISIONS table with columns for DATE, DESCRIPTION, and UPDATED POST SIZE.

PUBLIC WORKS DEPARTMENT TRAFFIC ENGINEERING DIVISION  
DESIGN BY: CARMELO CARATTOZZOLO, P.E.  
DRAWN BY: STEPHON RAMOUTAR  
CHECKED BY: CARMELO CARATTOZZOLO, P.E.

PAVEMENT MARKINGS AND SIGNS DETAILS  
SHEET NO. 1 OF 1



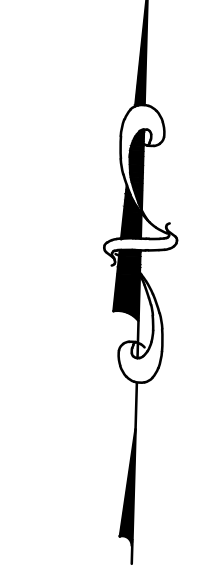


**LEGEND:**

- [Symbol] PROPOSED FILTER FABRIC PROTECTION OF CATCH BASIN

**NOTE:**

- STREETS SHALL BE WASHED DOWN WITH A WATER TRUCK AND SWEEP EACH DAY.



FINAL TAC  
ELEVATIONS ARE IN NAVD 88

**C12 STORMWATER POLLUTION PREVENTION PLAN**  
1" = 20'-0"

TITLE BLOCK VERSION: 20180820  
 MODEL: P:\PROJECTS\2024\17-5980-IRRI-OR EXPANSION\CADD\FILESDRAWINGS\216590-C-33PWP  
 PRINT DATE: 08/20/24 03:52:59 AM  
 TEMPLATE VERSION: 21.03.20201801



FILE: C:\WORK\VERSION\_20180820... MODEL: P:\PROJECTS\2017\1590\IRIN\EXPANSION\CADD\FILESDRAWINGS\210500-C-000P02... PRINT DATE: 05/20/2019 10:53:59 AM TEMPLATE VERSION: 21.03.2020#01

STORMWATER POLLUTION PREVENTION PLAN

Form containing site description, general information, sequence of major activities, controls, and various tables for runoff curves, hazardous products, and inventory for pollution prevention.

FINAL TAC ELEVATIONS ARE IN NAVD 88

C13 STORMWATER POLLUTION PREVENTION PLAN NOTES & SPECIFICATIONS



ARCHITECT HKS ARCHITECTS, INC. 2020 SALZEDO STREET, 4TH FLOOR CORAL GABLES, FL 33154

INTERIOR DESIGNER HKS ARCHITECTS 225 EAST ROBINSON ST, SUITE #405 ORLANDO, FL 32801

CIVIL & LANDSCAPE CALVIN GUERANO & ASSOCIATES 1800 ELLER DRIVE, SUITE 600 FORT LAUDERDALE, FL 33316

STRUCTURAL ENGINEER GMS STRUCTURAL ENGINEERS 14335 COMMERCE WAY MIAMI LAKES, FL 33016

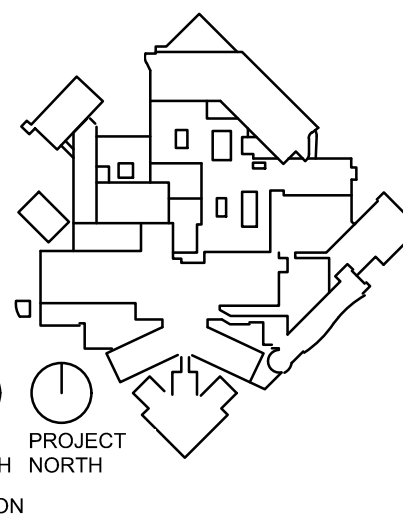
MEP & FIRE PROTECTION TLC ENGINEERING SOLUTIONS, INC. 800 FAIRWAY DRIVE DEERFIELD BEACH, FL 33441

TELECOM & EQUIPMENT SMITH SECHMAN REID, INC. 2995 SISCO DRIVE NASHVILLE, TN 37204

OWNER MEMORIAL HEALTHCARE SYSTEM 3501 JOHNSON STREET HOLLYWOOD, FL 33021



INTERIM REVIEW ONLY These documents are incomplete, and are not intended for regulatory approval, permit, or construction purposes.



JAMES D. MESSICK, STATE OF FLORIDA, PROFESSIONAL ENGINEER, LICENSE NO. 70870. THIS ITEM HAS BEEN DIGITALLY SIGNED AND SEALED BY JAMES D. MESSICK ON THE DATE INDICATED HERE.

HKS PROJECT NUMBER 23459.000 DATE AUGUST 19, 2024 ISSUE FINAL TAC

SHEET TITLE STORMWATER POLLUTION PREVENTION PLAN NOTES & SPECIFICATIONS SHEET NO.





PROJECT: SURGICAL & CRITICAL CARE TOWER EXPANSION

STORMWATER POLLUTION PREVENTION PLAN  
INSPECTION AND MAINTENANCE REPORT FORM

STRUCTURAL CONTROLS

DATE: \_\_\_\_\_ EARTH DIKES/SWALES

DIKE OR SWALE	FROM	TO	IS DIKE/SWALE STABILIZED ?	IS THERE EVIDENCE OF WASHOUT OR OVERTOPPING

MAINTENANCE REQUIRED FOR EARTH DIKE/SWALE:

TO BE PERFORMED BY: \_\_\_\_\_ ON OR BEFORE: \_\_\_\_\_

CATCH BASIN/CURB INLET/OUTFALL TURBIDITY CONTROLS

STRUCTURE/OUTFALL	ARE TURBIDITY CONTROLS IN PLACE	ANY EVIDENCE OF CLOGGING/WASHOUT OR BYPASSING ?	ARE TURBIDITY CONTROLS IN NEED OF REPLACING	DOES SILT NEED TO BE REMOVED FROM AROUND CONTROL

MAINTENANCE REQUIRED FOR CATCH BASIN/CURB INLETS/OUTFALLS TURBIDITY CONTROLS:

TO BE PERFORMED BY: \_\_\_\_\_ ON OR BEFORE: \_\_\_\_\_

PAGE 2 OF 4

PROJECT: SURGICAL & CRITICAL CARE TOWER EXPANSION

STORMWATER POLLUTION PREVENTION PLAN  
INSPECTION AND MAINTENANCE REPORT FORM

CHANGES REQUIRED TO THE POLLUTION PREVENTION PLAN:

REASONS FOR CHANGES:

I CERTIFY UNDER PENALTY OF LAW THAT THIS DOCUMENT AND ALL ATTACHMENTS WERE PREPARED UNDER MY DIRECTION OR SUPERVISION IN ACCORDANCE WITH THE REQUIREMENTS OF THE NATIONAL POLLUTION DISCHARGE ELIMINATION ACT AND THE NATIONAL POLLUTION DISCHARGE ELIMINATION SYSTEM. I HAVE PERSONALLY COMBINED AND EVALUATED THE INFORMATION SUBMITTED, BASED ON MY INQUIRY OF THE PERSON OR PERSONS WHO MANAGE THE SYSTEM, OR THOSE PERSONS DIRECTLY RESPONSIBLE FOR GATHERING THE INFORMATION. THE INFORMATION GATHERED IS, TO THE BEST OF MY KNOWLEDGE AND BELIEF, TRUE, ACCURATE, AND COMPLETE. I AM AWARE THAT THERE ARE SIGNIFICANT PENALTIES FOR SUBMITTING FALSE INFORMATION, INCLUDING THE POSSIBILITY OF FINE AND IMPRISONMENT FOR KNOWING VIOLATIONS.

DATE: \_\_\_\_\_

SIGNATURE: \_\_\_\_\_

PAGE 4 OF 4

PROJECT: SURGICAL & CRITICAL CARE TOWER EXPANSION

INSPECTOR: \_\_\_\_\_ DATE: \_\_\_\_\_

DAYS SINCE LAST RAINFALL: \_\_\_\_\_ AMOUNT OF LAST RAINFALL: \_\_\_\_\_ INCHES

CONDITION

TO BE PERFORMED BY: \_\_\_\_\_ ON OR BEFORE: \_\_\_\_\_

PROJECT: SURGICAL & CRITICAL CARE TOWER EXPANSION

STORMWATER POLLUTION PREVENTION PLAN  
INSPECTION AND MAINTENANCE REPORT FORM

SEDIMENT BASIN

DEPTH OF SEDIMENT IN BASIN	DEPTH OF SEDIMENT SIDE BASIN	ANY EVIDENCE OF OVERTOPPING OR ENTRAPMENT ?	CONDITION OF OUTFALL FROM SEDIMENT BASIN

MAINTENANCE REQUIRED FOR SEDIMENT BASIN:

TO BE PERFORMED BY: \_\_\_\_\_ ON OR BEFORE: \_\_\_\_\_

OTHER CONTROLS

STABILIZED CONSTRUCTION ENTRANCE

DOES MUCH SEDIMENT GET TRACKED ON TO ROAD ?	IS THE GRAVEL CLEAN OR IS IT FILLED WITH SEDIMENT?	DOES ALL TRAFFIC USE THE STABILIZED CONSTRUCTION ENTRANCE TO LEAVE THE SITE ?	IS THE CULVERT BENEATH THE WORKING (IF APPLICABLE)

MAINTENANCE REQUIRED FOR STABILIZED CONSTRUCTION ENTRANCE:

TO BE PERFORMED BY: \_\_\_\_\_ ON OR BEFORE: \_\_\_\_\_

PAGE 3 OF 4

**NOTE TO CONTRACTOR:**  
THIS IS THE CONTRACTOR'S CERTIFICATION REQUIRED BY THE EPA'S NATIONAL POLLUTION DISCHARGE ELIMINATION SYSTEM (NPDES), STORMWATER POLLUTION PREVENTION PLAN FOR CONSTRUCTION SITES OVER 1 ACRES. THIS CERTIFICATION MUST BE COMPLETED WEEKLY AND AFTER EVERY RAINFALL EVENT OVER 0.25 INCHES. IT IS SUGGESTED THAT THIS SHEET BE REMOVED FROM THE PLAN SET AND DUPLICATED AS NEEDED BY THE CONTRACTOR.