



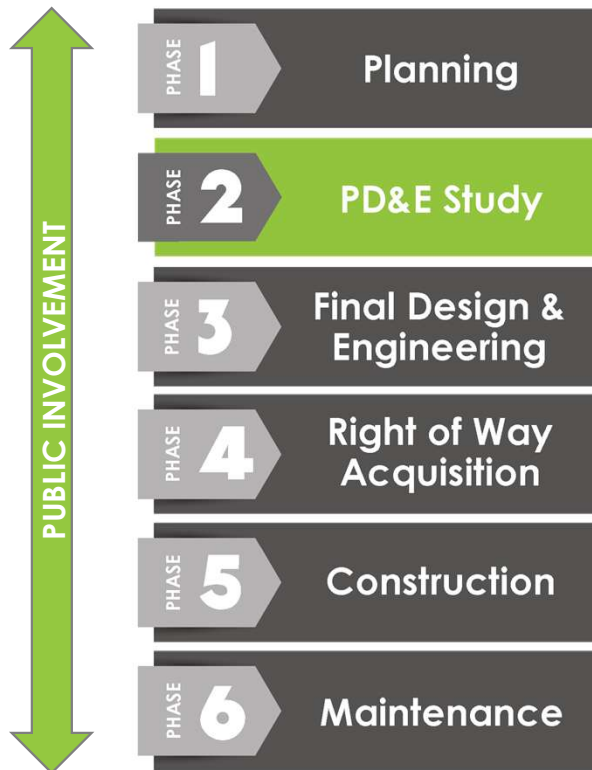
PROJECT DEVELOPMENT & ENVIRONMENT (PD&E) STUDY

Interstate 95 (I-95/SR 9) • From South of Hallandale Beach Boulevard (SR 858) to North of Hollywood Boulevard (SR 820)
Broward County, FL • FPID No.: 436903-I-22-02 • ETDM No.: 14254

PROJECT LIMITS/STUDY AREA



TRANSPORTATION DEVELOPMENT PROCESS

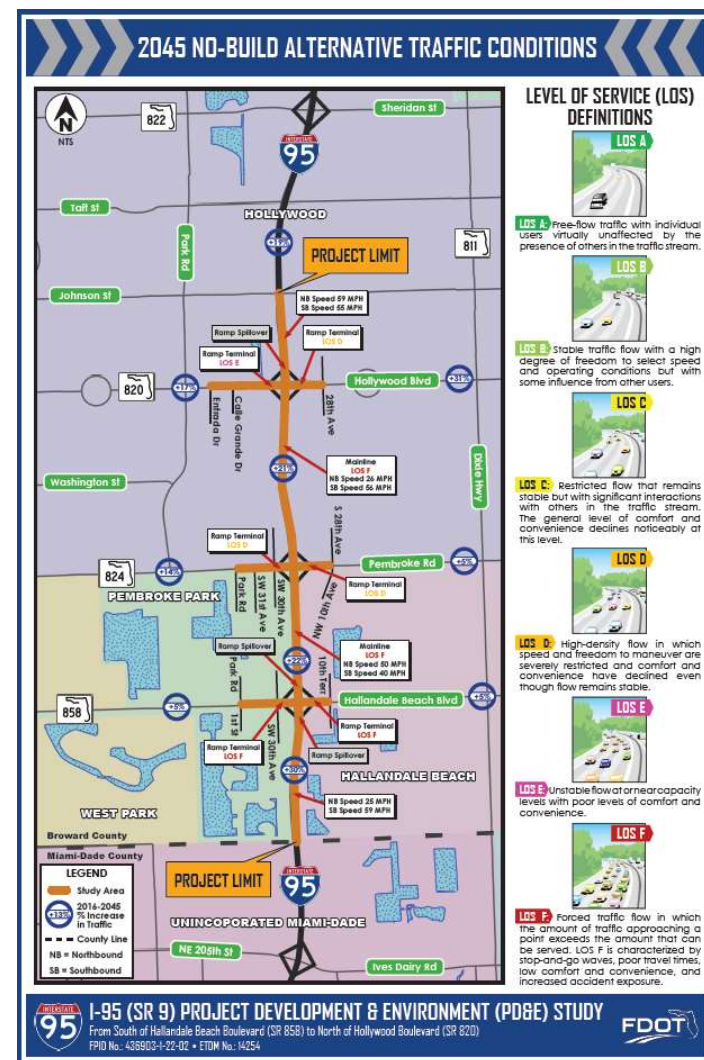


The purpose and need for a project provide the basis for developing, considering, evaluating, and eliminating project alternatives.

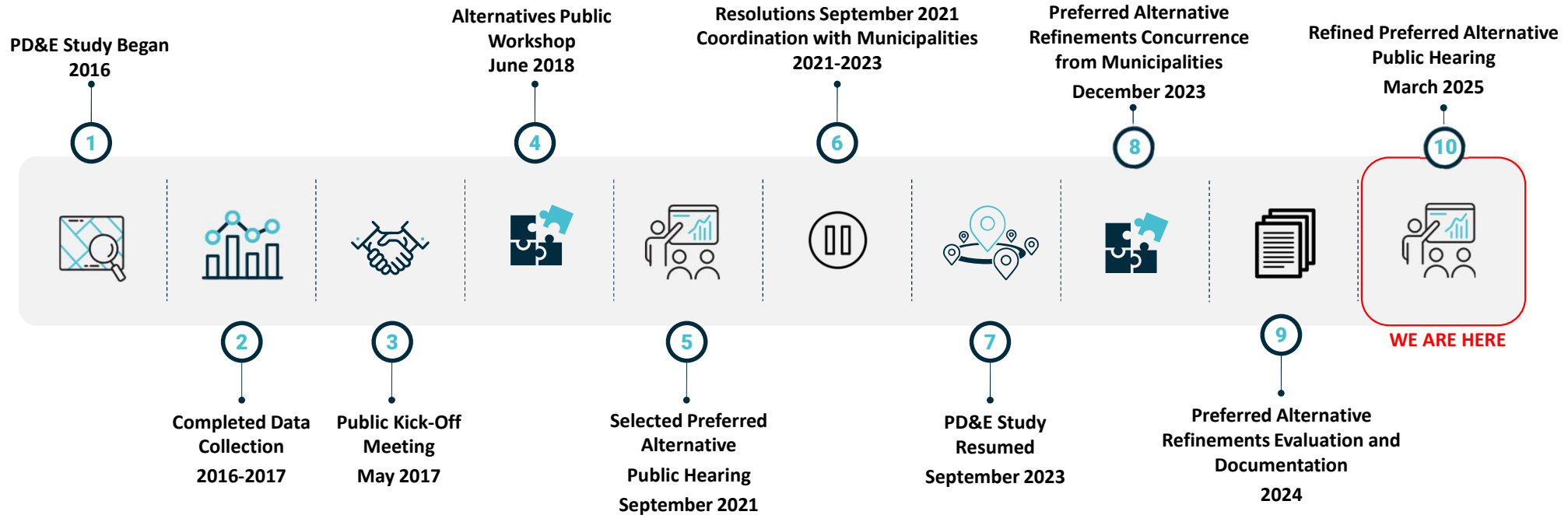


PD&E Study - Scope of Project

- ❑ Evaluate interchange improvements to improve operations and safety
- ❑ Identify ramp terminal intersection improvements
- ❑ Evaluate the social, economic, physical, and environmental impacts associated with the potential improvements
- ❑ Evaluate traffic operations
 - Year 2030
 - Year 2045
- ❑ Identify a preferred alternative

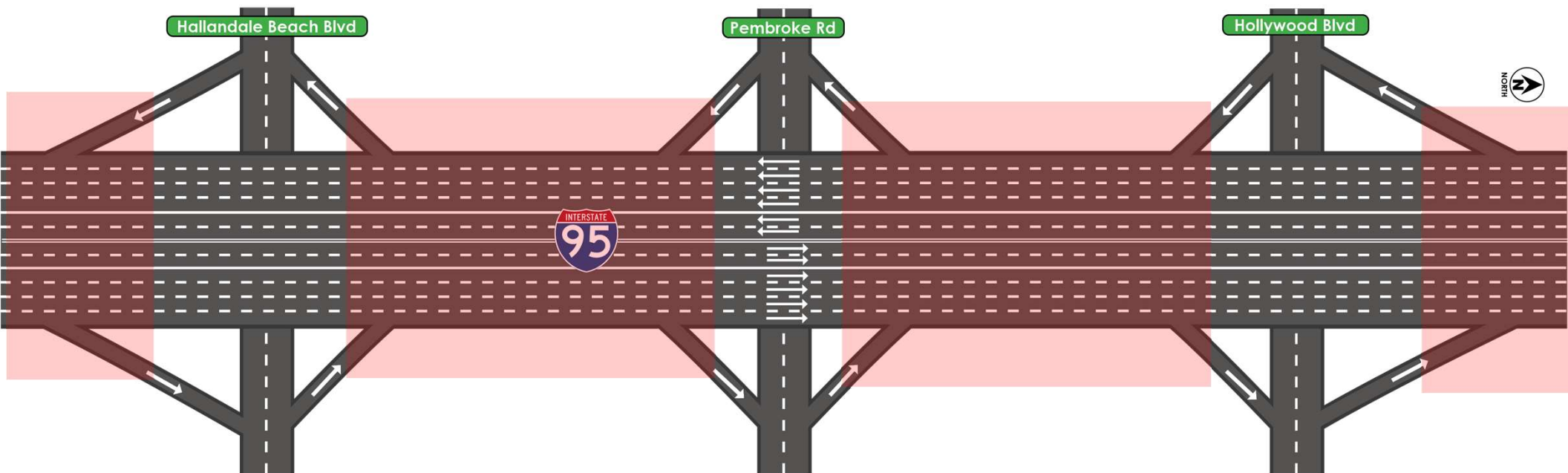


PD&E Study – Project History and Community Involvement



Two resolutions were submitted against the proposed improvements:
City of Hollywood – Local Interchange Access and Drainage Impacts
Town of Pembroke Park – Right of Way Impacts

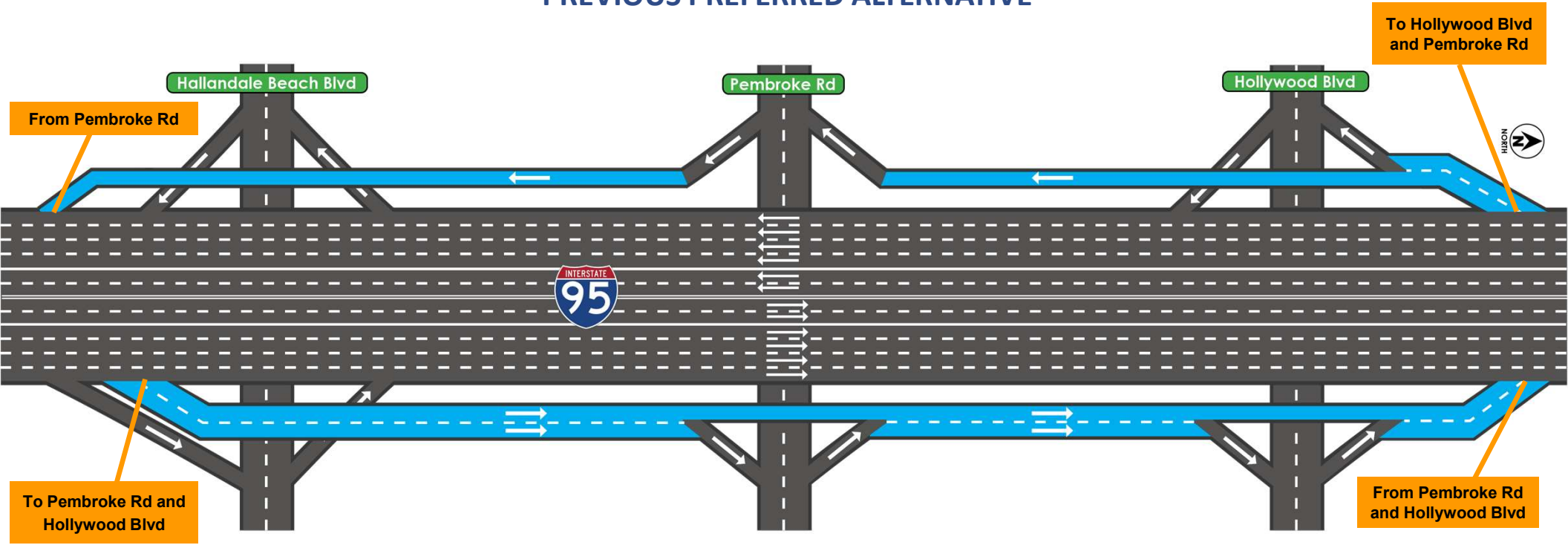
EXISTING CONDITIONS



Congestion

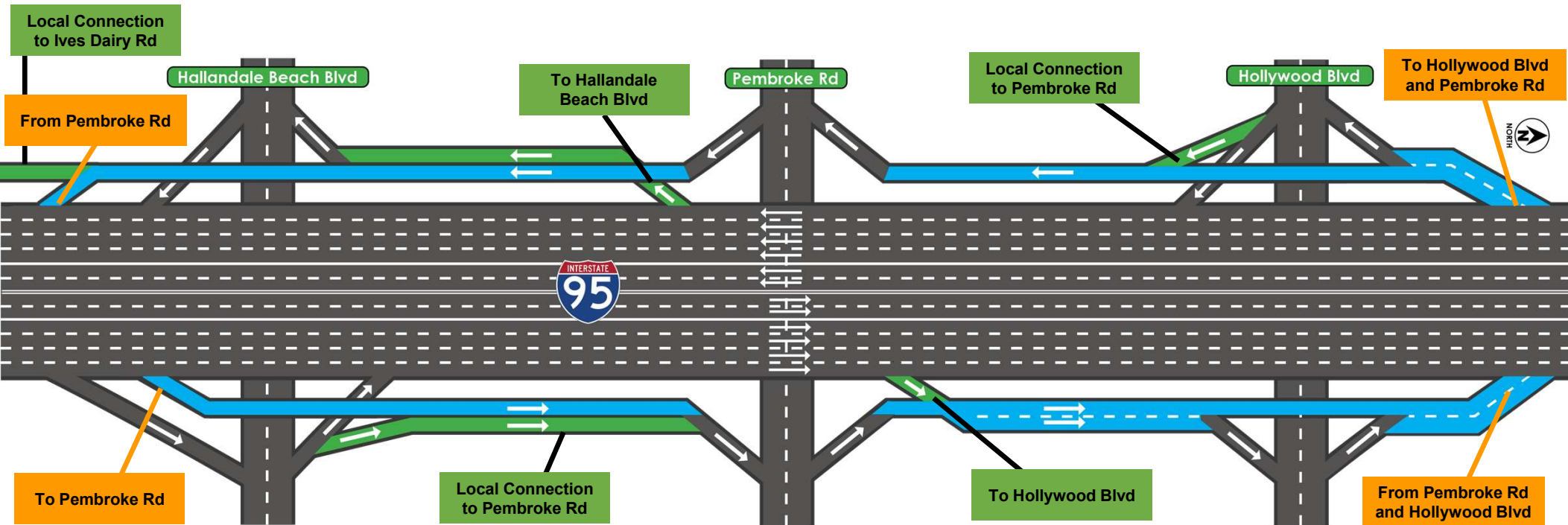
Previous PD&E Preferred Alternative – Collector Distributor Roadway

PREVIOUS PREFERRED ALTERNATIVE



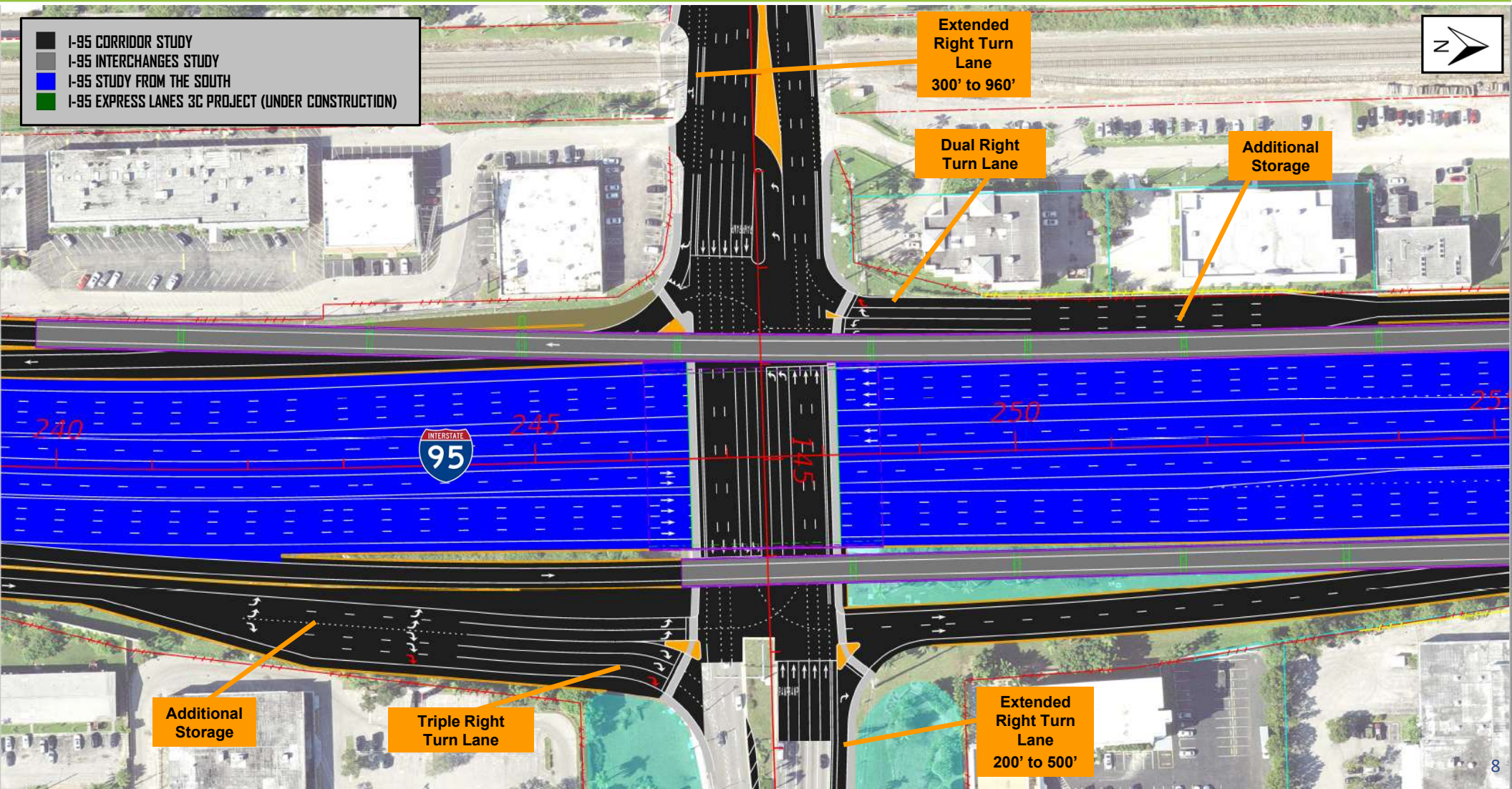
Refined Preferred Alternative – I-95 Corridor (New Ramps Configuration)

REFINED PREFERRED ALTERNATIVE



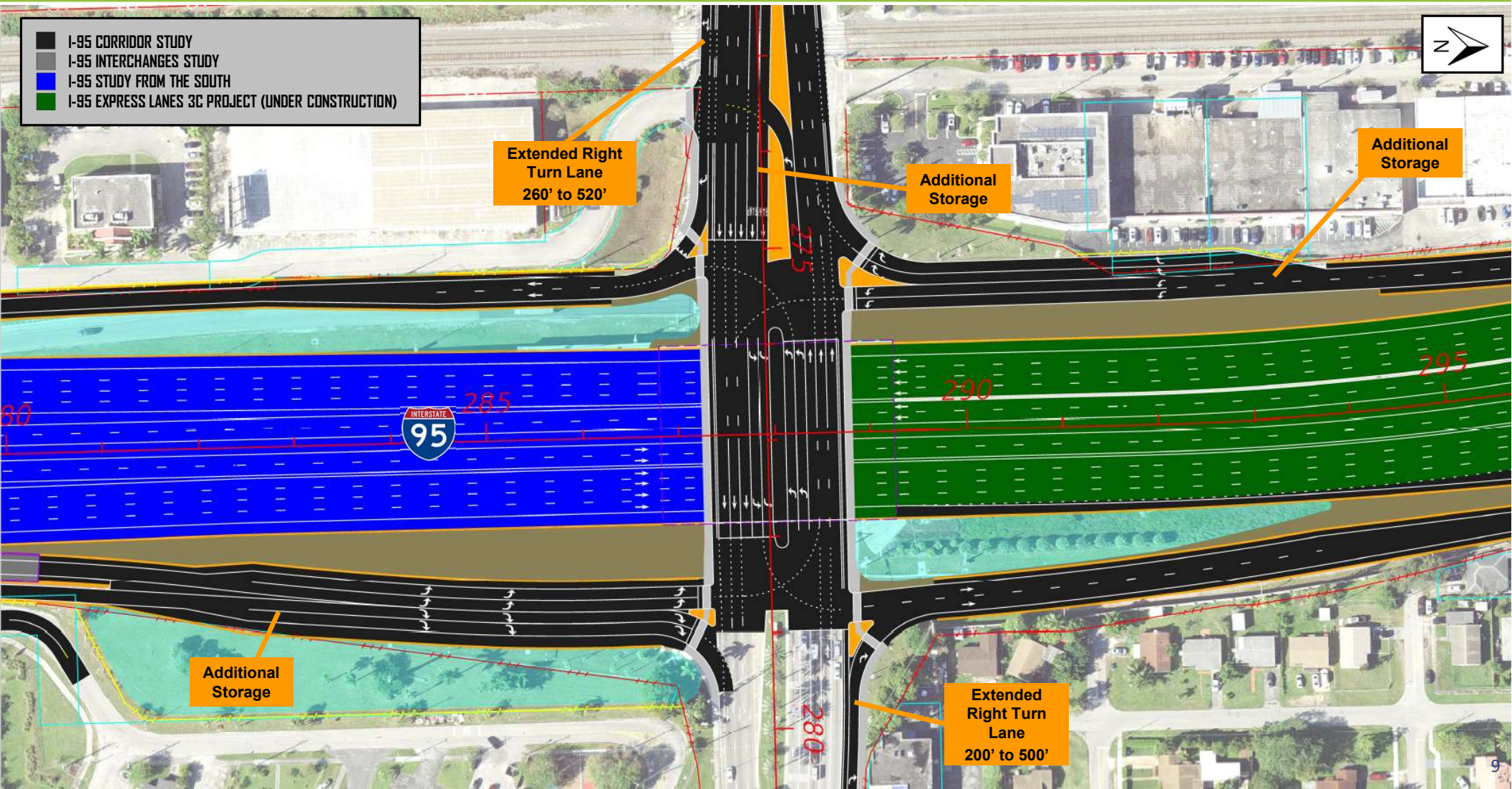
Refined Preferred Alternative – Hallandale Beach Boulevard Interchange

- I-95 CORRIDOR STUDY
- I-95 INTERCHANGES STUDY
- I-95 STUDY FROM THE SOUTH
- I-95 EXPRESS LANES 3C PROJECT (UNDER CONSTRUCTION)



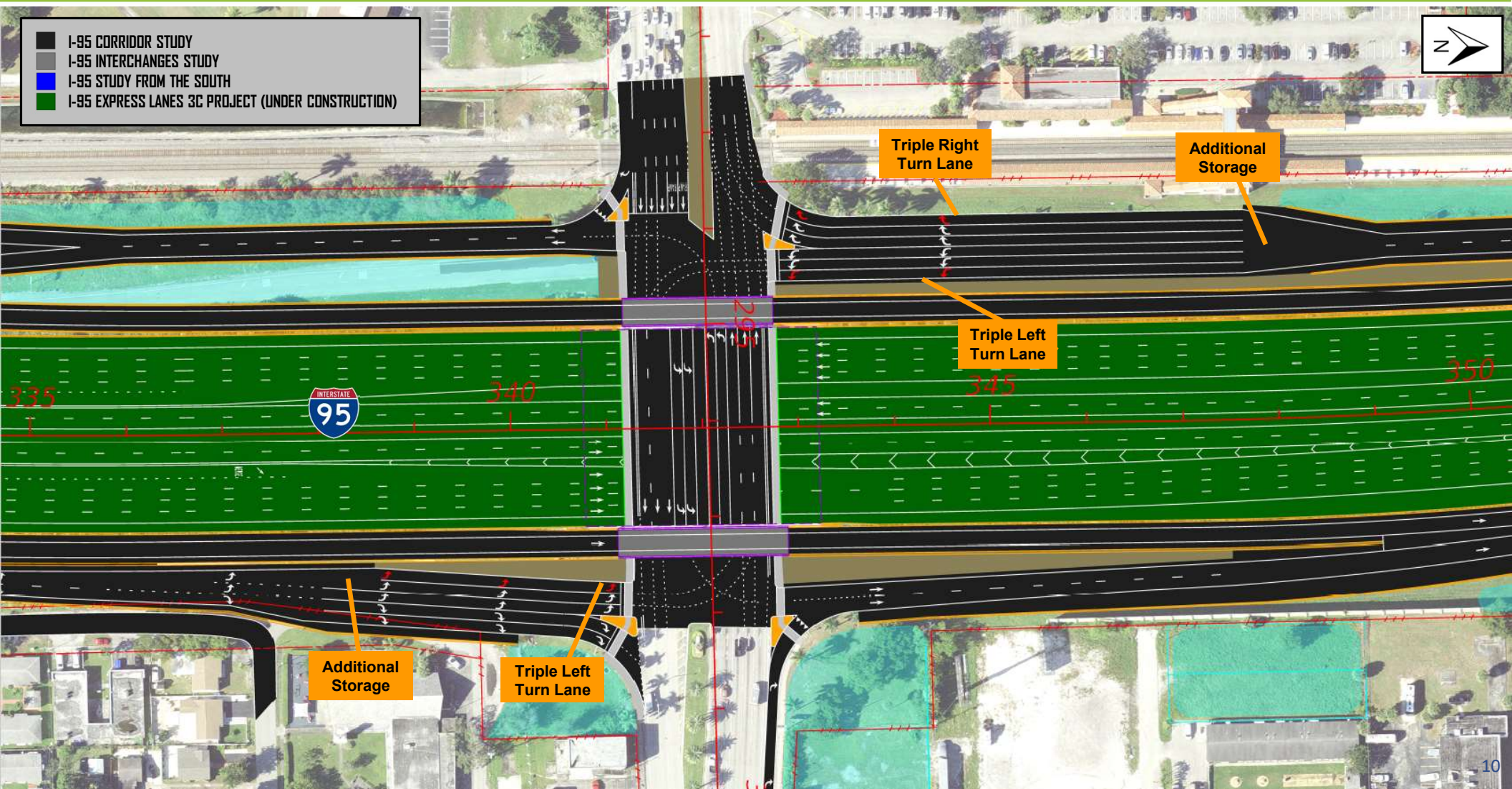
Refined Preferred Alternative – Pembroke Road

- I-95 CORRIDOR STUDY
- I-95 INTERCHANGES STUDY
- I-95 STUDY FROM THE SOUTH
- I-95 EXPRESS LANES 3C PROJECT (UNDER CONSTRUCTION)



Refined Preferred Alternative – Hollywood Boulevard Interchange

- I-95 CORRIDOR STUDY
- I-95 INTERCHANGES STUDY
- I-95 STUDY FROM THE SOUTH
- I-95 EXPRESS LANES 3C PROJECT (UNDER CONSTRUCTION)



PROJECT COST ESTIMATE

PREFERRED ALTERNATIVE	
Construction Cost	\$223 M
Utilities	\$4.3 M
Design Cost (9%)	\$20 M
Right of Way Cost	\$33 M
Construction Engineering and Inspection (16%)	\$36 M
Total Estimated Project Cost	\$316.3 M



FUNDING

- Design – Funded
- Right of Way – Unfunded
- Construction – Unfunded

RIGHT OF WAY IMPACTS

PARCEL TYPE	IMPACT
Commercial	18
Residential	10
Vacant	3
Governmental	15
Total Parcels Impacted	46
Potential Relocations	15

SCHEDULE

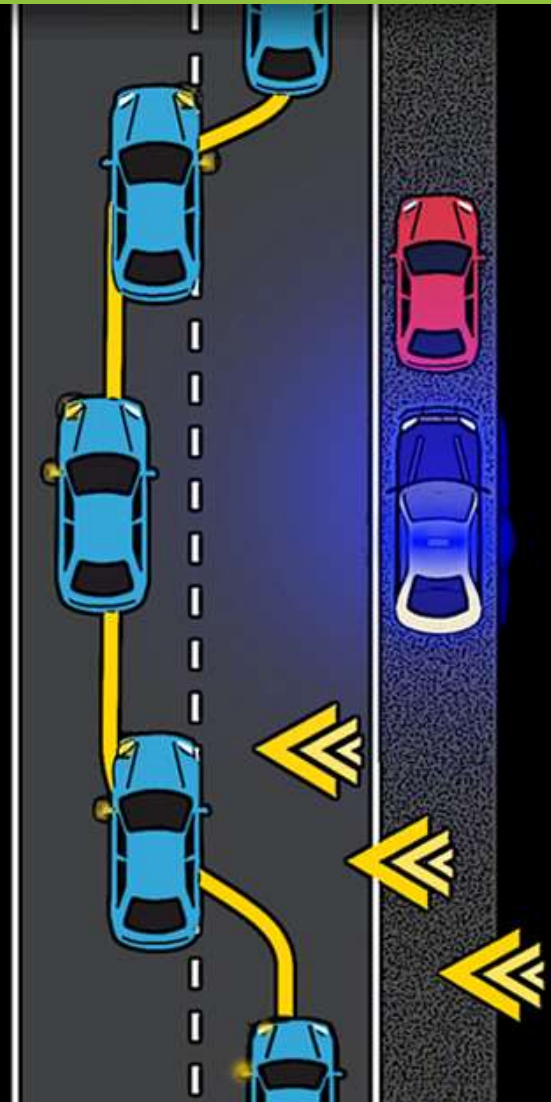
- Public Hearing
 - **March 25, 2025 – Virtual**
 - **March 27, 2025 – In-Person**
Holiday Inn
Fort Lauderdale-Airport Hotel
2905 Sheridan Street, Hollywood
Florida, 33020
- Location Design Concept Acceptance (Study Completed) – October 2025
- Design Phase – 2025-2026

PD&E Study - Next Steps





flhsmv.gov/moveover





www.fdot.gov/projects/sefl/future/95/858-820/