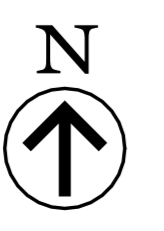
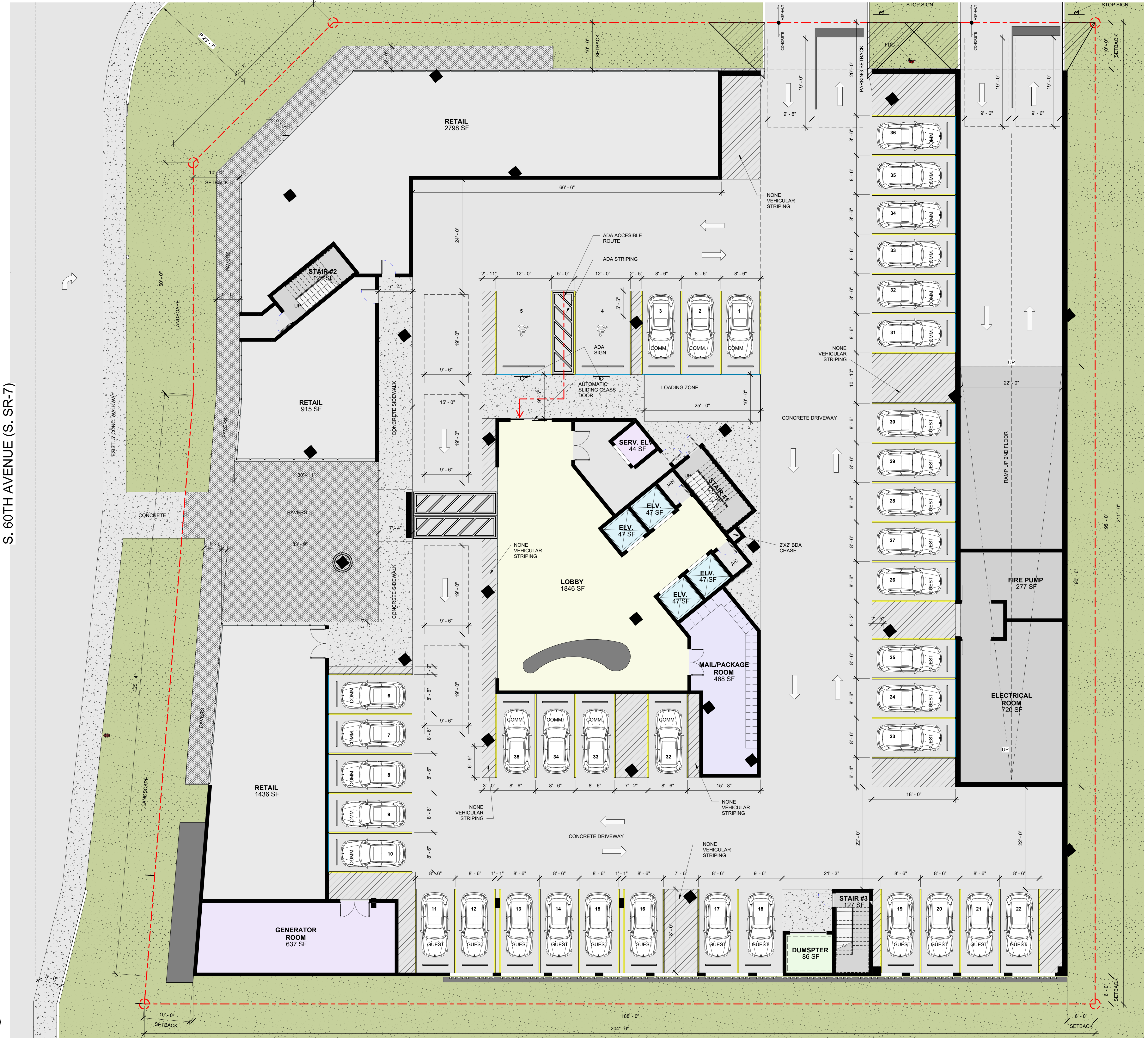


REVISION	BY

PROPOSED 198 UNIT MULTIFAMILY DEVELOPMENT FOR
GUITAR VIEW LLC
 5200 S STATE ROAD 7, HOLLYWOOD, FL, 33314

SEAL AR 0017852
 LUIS LA ROSA

DRAWN: A.G.
 CHECKED: L.L.R.
 DATE: 3/13/2024
 SCALE: AS NOTED
 JOB NO.: 024-005
 SHEET:
A 1.1
 OF: SHEETS



1 1ST FLOOR PLAN
 1/8" = 1'-0"

REVISION	BY

PROPOSED 198 UNIT MULTIFAMILY DEVELOPMENT FOR
 GUITAR VIEW LLC
 5200 S STATE ROAD 7, HOLLYWOOD, FL, 33314

SEAL AR 0017852
 LUIS LA ROSA

DRAWN:	A.G.
CHECKED:	LLR
DATE:	3/13/2024
SCALE:	AS NOTED
JOB NO.:	024-005
SHEET:	A 1.2
OF:	SHEETS:



1 2ND FLOOR PLAN
 1/8" = 1'-0"

REVISION	BY

PROPOSED 198 UNIT MULTIFAMILY DEVELOPMENT FOR
GUITAR VIEW LLC
5200 S STATE ROAD 7, HOLLYWOOD, FL, 33314

SEAL AR 0017852
 LUIS LA ROSA

DRAWN:	A.G.
CHECKED:	L.L.R.
DATE:	3/13/2024
SCALE:	AS NOTED
JOB NO.:	024-005
SHEET:	A 1.3
OF:	SHEETS



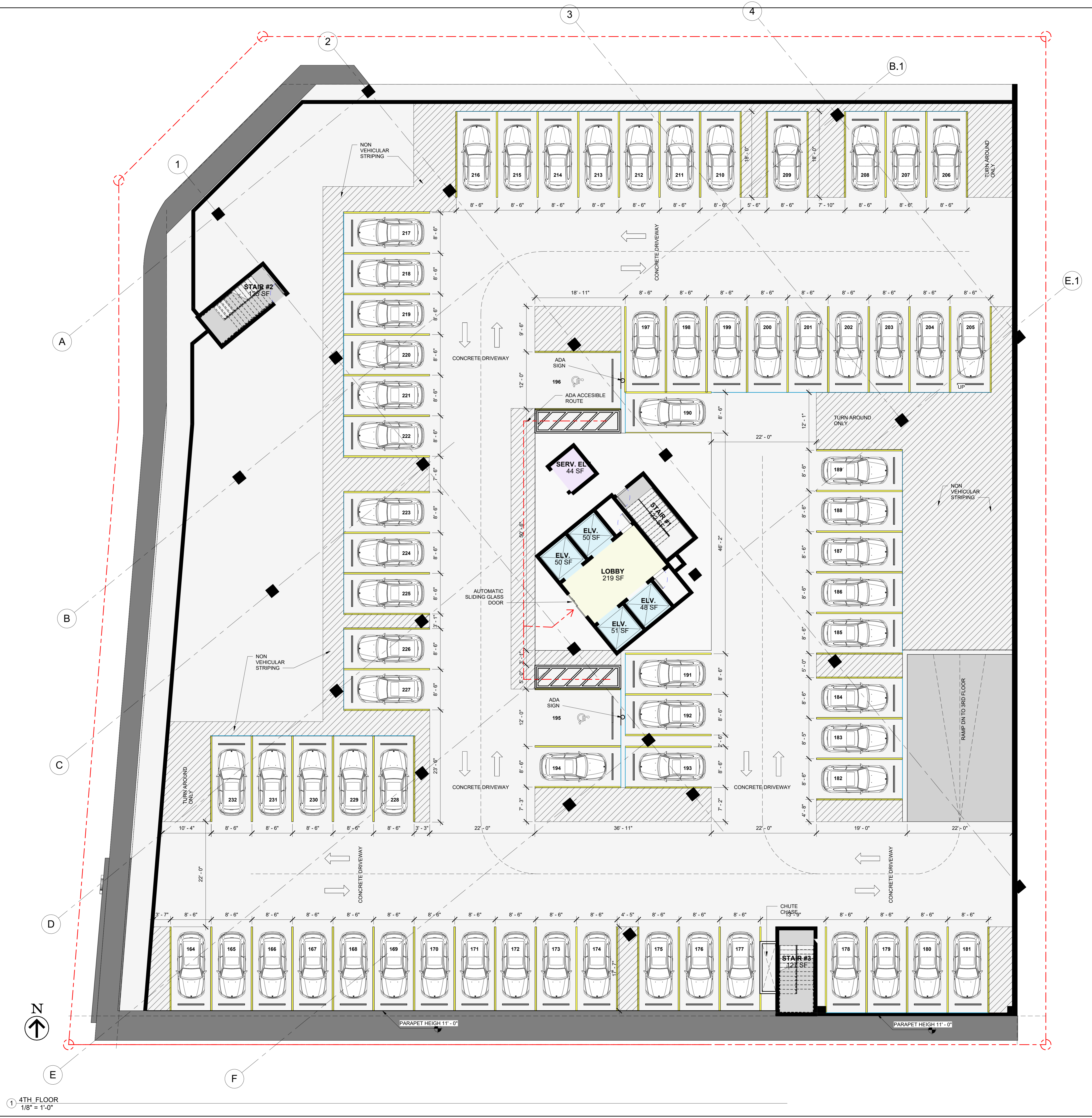
1 3RD FLOOR PLAN
 1/8" = 1'-0"

REVISION	BY

PROPOSED 198 UNIT MULTIFAMILY DEVELOPMENT FOR
GUITAR VIEW LLC
 5200 S STATE ROAD 7, HOLLYWOOD, FL, 33314

SEAL AR 0017852
 LUIS LA ROSA

DRAWN: A.G.
 CHECKED: L.L.R.
 DATE: 3/13/2024
 SCALE: AS NOTED
 JOB NO.: 024-005
 SHEET:
A 1.4
 OF: SHEETS:



① 4TH FLOOR
 1/8" = 1'-0"

REVISION	BY

PROPOSED 198 UNIT MULTIFAMILY DEVELOPMENT FOR
 GUITAR VIEW LLC
 5200 S STATE ROAD 7, HOLLYWOOD, FL, 33314

SEAL AR 0017852
 LUIS LA ROSA

DRAWN: A.G.
 CHECKED: L.L.R.
 DATE: 3/13/2024
 SCALE: AS NOTED
 JOB NO.: 024-005
 SHEET:

A 1.5
 OF: SHEETS:



UNIT'S MODELS

- ONE BEDROOM
- STUDIO
- TWO BEDROOM

14 UNITS
3 UNITS
5 UNITS
22 UNITS PER FLOOR
198 UNITS TOTAL

REVISION	BY

PROPOSED 198 UNIT MULTIFAMILY DEVELOPMENT FOR
 GUITAR VIEW LLC
 5200 S STATE ROAD 7, HOLLYWOOD, FL, 33314

SEAL: AR 0017852
 LUIS LA ROSA

DRAWN: Author
 CHECKED: Checker
 DATE: 3/13/2024
 SCALE: AS NOTED
 JOB NO.: 024-005
 SHEET:

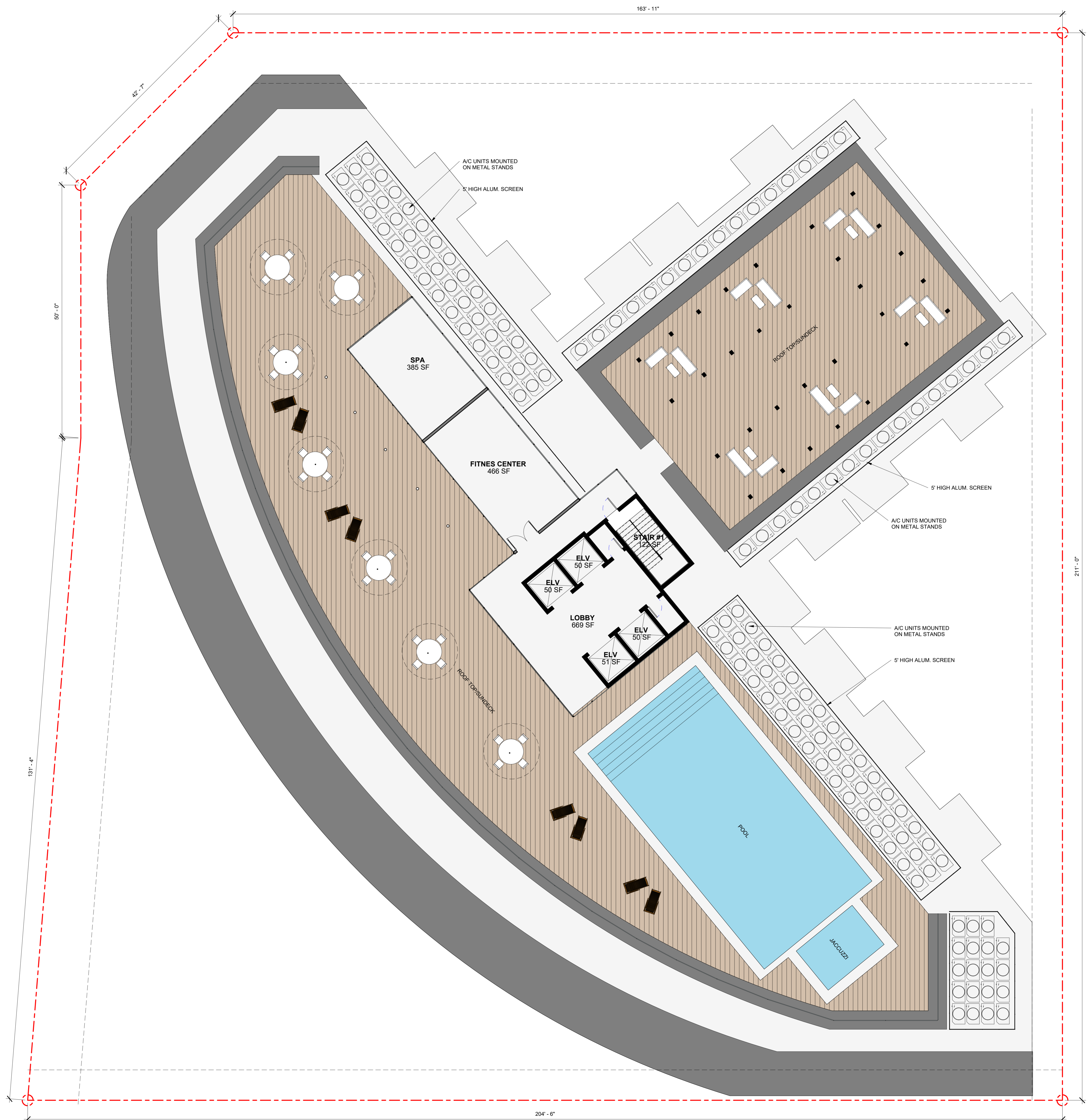
A 1.6
 OF: SHEETS:



UNIT'S MODELS

ONE BEDROOM	14 UNITS
STUDIO	3 UNITS
TWO BEDROOM	5 UNITS
22 UNITS PER FLOOR	
198 UNITS TOTAL	

1 TYP FLOOR PLAN (6TH TO 13TH)
 1/8" = 1'-0"



1 TOP OF ROOF
1/8" = 1'-0"

LLR Architects, Inc.
ARCHITECTURE & PLANNING
9000 SHERIDAN STREET ST. 158
PENSACOLA PINES, FL 33024
(OFF.) 352-403-7920
(CELL.) 798-543-0851
E-MAIL: LLR@LLRARCHITECTS.COM
Registered Architect
No. 2017852

REVISION	BY

PROPOSED 198 UNIT MULTIFAMILY DEVELOPMENT FOR
GUITAR VIEW LLC
5200 S STATE ROAD 7, HOLLYWOOD, FL, 33314

SEAL: AR 0017852
LUIS LA ROSA

DRAWN: Author
CHECKED: Checker
DATE: 3/13/2024
SCALE: AS NOTED
JOB NO.: 024-005
SHEET:

A 1.7
OF: SHEETS:

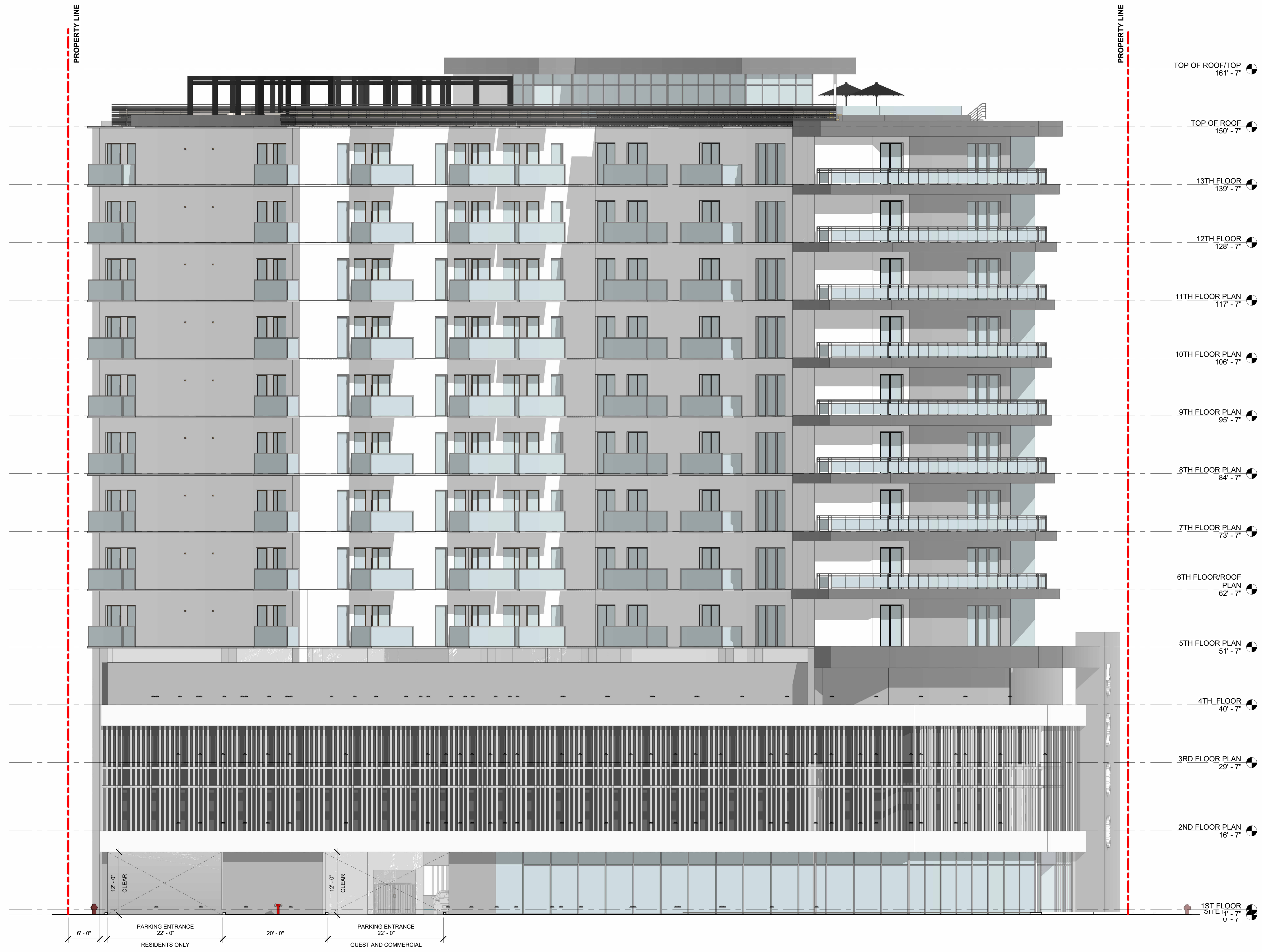
REVISION	BY

PROPOSED 198 UNIT MULTIFAMILY DEVELOPMENT FOR
 GUITAR VIEW LLC
 5200 S STATE ROAD 7, HOLLYWOOD, FL, 33314

SEAL AR 0017852
 LUIS LA ROSA

DRAWN: Author
 CHECKED: Checker
 DATE: 3/13/2024
 SCALE: AS NOTED
 JOB NO.: 024-005
 SHEET:

A 2.1
 OF: SHEETS:



① NORTH ELEVATION
 1/8" = 1'-0"

REVISION	BY

PROPOSED 198 UNIT MULTIFAMILY DEVELOPMENT FOR
 GUITAR VIEW LLC
 5200 S STATE ROAD 7, HOLLYWOOD, FL, 33314

SEAL: AR 0017852
 LUIS LA ROSA

DRAWN:	Author
CHECKED:	Checker
DATE:	3/13/2024
SCALE:	AS NOTED
JOB NO.:	024-005
SHEET:	A 2.2
OF:	SHEETS



① EAST ELEVATION
 1/8" = 1'-0"

REVISION	BY

PROPOSED 198 UNIT MULTIFAMILY DEVELOPMENT FOR
 GUITAR VIEW LLC
 5200 S STATE ROAD 7, HOLLYWOOD, FL, 33314

SEAL: AR 0017852
 LUIS LA ROSA

DRAWN:	Author
CHECKED:	Checker
DATE:	3/13/2024
SCALE:	AS NOTED
JOB. NO.:	024-005
SHEET:	A 2.3
OF:	SHEETS



① WEST ELEVATION
 1/8" = 1'-0"

REVISION	BY

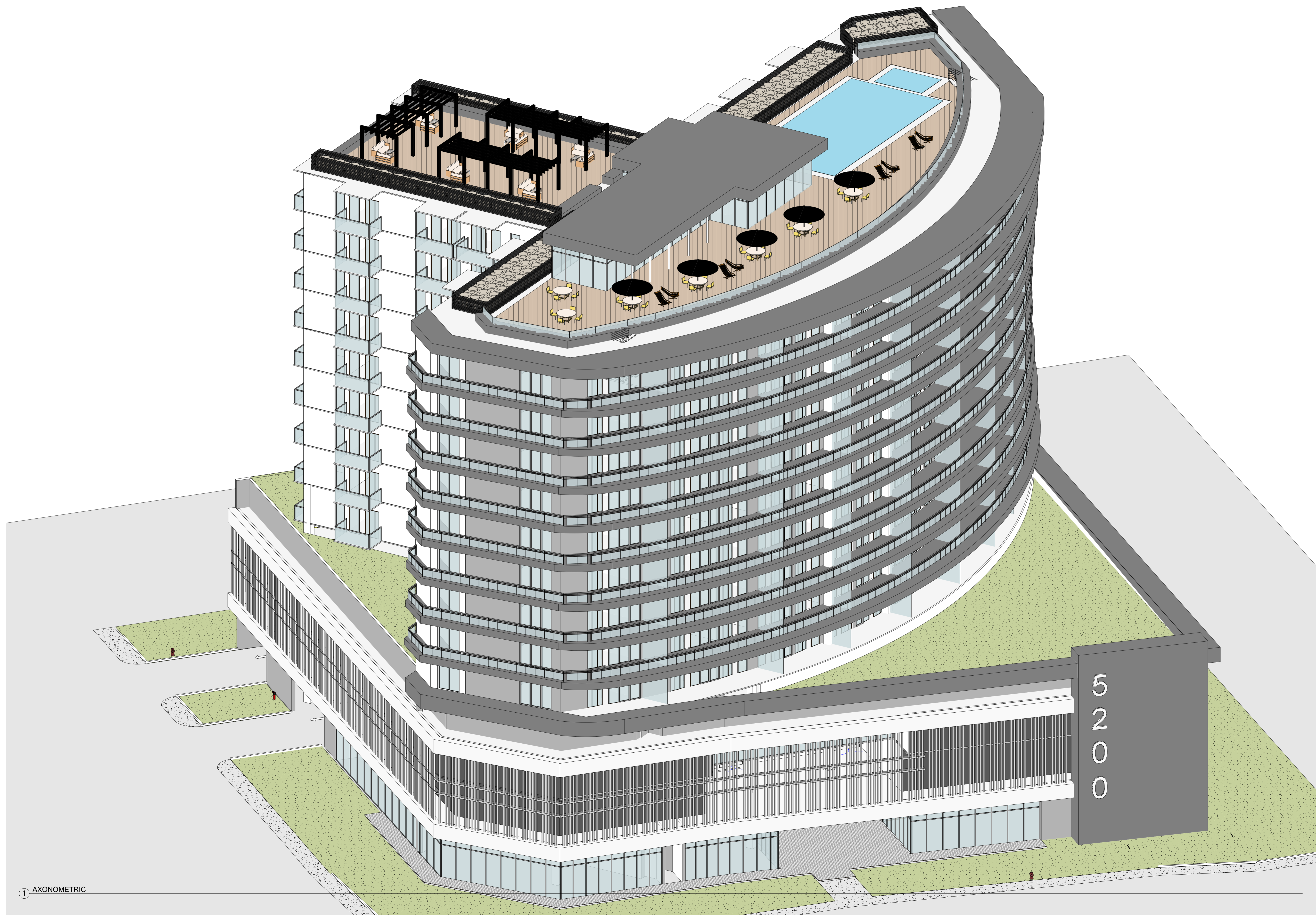
PROPOSED 198 UNIT MULTIFAMILY DEVELOPMENT FOR
 GUITAR VIEW LLC
 5200 S STATE ROAD 7, HOLLYWOOD, FL, 33314

SEAL: AR 0017852
 LUIS LA ROSA

DRAWN: Author
 CHECKED: Checker
 DATE: 3/13/2024
 SCALE: AS NOTED
 JOB. NO.: 024-005
 SHEET:
A 2.4
 OF: SHEETS:



① SOUTH ELEVATION
 1/8" = 1'-0"



1 AXONOMETRIC


LLR Architects, Inc.
 ARCHITECTURE & PLANNING
 9000 SHERIDAN STREET ST. 158
 PEMBROKE PINES, FL 33024
 (OFF.) 352-403-7020
 (CELL) 798-543-0851
 E-MAIL: LLR@LLRARCHITECTS.COM
 Registered Architect
 No. 0017852

REVISION	BY

PROPOSED 198 UNIT MULTIFAMILY DEVELOPMENT FOR
 GUITAR VIEW LLC
 5200 S STATE ROAD 7, HOLLYWOOD, FL, 33314

SEAL: AR 0017852
 LUIS LA ROSA

DRAWN: Author
 CHECKED: Checker
 DATE: 3/13/2024
 SCALE: AS NOTED
 JOB. NO.: 024-005
 SHEET:

A 2.5
 OF: SHEETS:




LLA Architects, Inc.
 ARCHITECTURE & PLANNING
 9000 SHERIDAN STREET ST. 158
 PEMBROKE PINES, FL 33024
 (OFF.) 305-403-7026
 (CELL) 798-543-0851
 E-MAIL: LLAS@LLAARCHITECTS.COM
 LUIS LA ROSA - Registered Architect
 No. 2017852

REVISION	BY

PROPOSED 198 UNIT MULTIFAMILY DEVELOPMENT FOR
 GUITAR VIEW LLC
 5200 S STATE ROAD 7, HOLLYWOOD, FL, 33314

SEAL: AR 0017852
 LUIS LA ROSA

DRAWN: Author
 CHECKED: Checker
 DATE: 3/13/2024
 SCALE: AS NOTED
 JOB. NO.: 024-005
 SHEET:

A 2.6
 OF: SHEETS:



LLA Architects, Inc.
 ARCHITECTURE & PLANNING
 9000 SHERIDAN STREET ST. 158
 PEMBROKE PINES, FL 33024
 (OFF.) 352-403-7026
 (CELL.) 798-543-0851
 E-MAIL: LLA@LLAARCHITECTS.COM
 LUIS LA ROSA - Registered Architect
 No. 2017852

REVISION	BY

PROPOSED 198 UNIT MULTIFAMILY DEVELOPMENT FOR
 GUITAR VIEW LLC
 5200 S STATE ROAD 7, HOLLYWOOD, FL, 33314

SEAL: AR 0017852
 LUIS LA ROSA

DRAWN: Author
 CHECKED: Checker
 DATE: 3/13/2024
 SCALE: AS NOTED
 JOB. NO.: 024-005
 SHEET:

A 2.7
 OF: SHEETS:



LLR Architects, Inc.
 ARCHITECTURE & PLANNING
 9000 SHERIDAN STREET ST. 158
 PEMBROKE PINES, FL 33024
 (OFF.) 305-403-7020
 (CELL) 798-543-0851
 E-MAIL: LLR@LLRARCHITECTS.COM
 Registered Architect
 No. 2017852

REVISION	BY

PROPOSED 198 UNIT MULTIFAMILY DEVELOPMENT FOR
 GUITAR VIEW LLC
 5200 S STATE ROAD 7, HOLLYWOOD, FL, 33314

SEAL: AR 0017852
 LUIS LA ROSA

DRAWN: Author
 CHECKED: Checker
 DATE: 3/13/2024
 SCALE: AS NOTED
 JOB NO.: 024-005
 SHEET:

A 2.8

OF: SHEETS: