



CRA BOARD MEETING

Item 11 - Keating Park TOTLOT Update

May 6, 2026

FINDINGS

- The CRA Board directed staff to explore the possibility of a piece of playground equipment at the new dog park .
- Staff presented 4 small pieces of playground equipment along with fencing, and a play surfacing.
- Staff also presented the current conditions of the proposed area noting several conflicts that would need to be resolved prior to moving forward with the playground equipment installation.

DIRECTION

CRA Board directed staff to look into the following items:

- Additional information on the conflicts that would need to be resolved in this area and a preliminary cost.
- Alternate playground equipment options
- Splashpad feasibility
- Wall mounted play equipment

Site Plan Prior To Renovation



The Quadomain

Approximately 1,800 sqft*
With several conflicts throughout area

+/- 1,800 sqft

Beach




Keating Park

Magnolia Terr.

The Wave Condo

SR A1A South Ocean Dr.



-  Crown Castle electrical line for underwater camera
-  Water line
-  Proposed Tot Lot Location

Keating Park Existing Conditions Photos



From Parking Lot Looking East



From Plumbing Chase Looking West



From Walkway Looking North

Option 1 Playground – Proposed Layout & Equipment



A **KOMPAN:** Trouper with Roof Small play structure



B **KOMPAN:** 8' two bay swing set



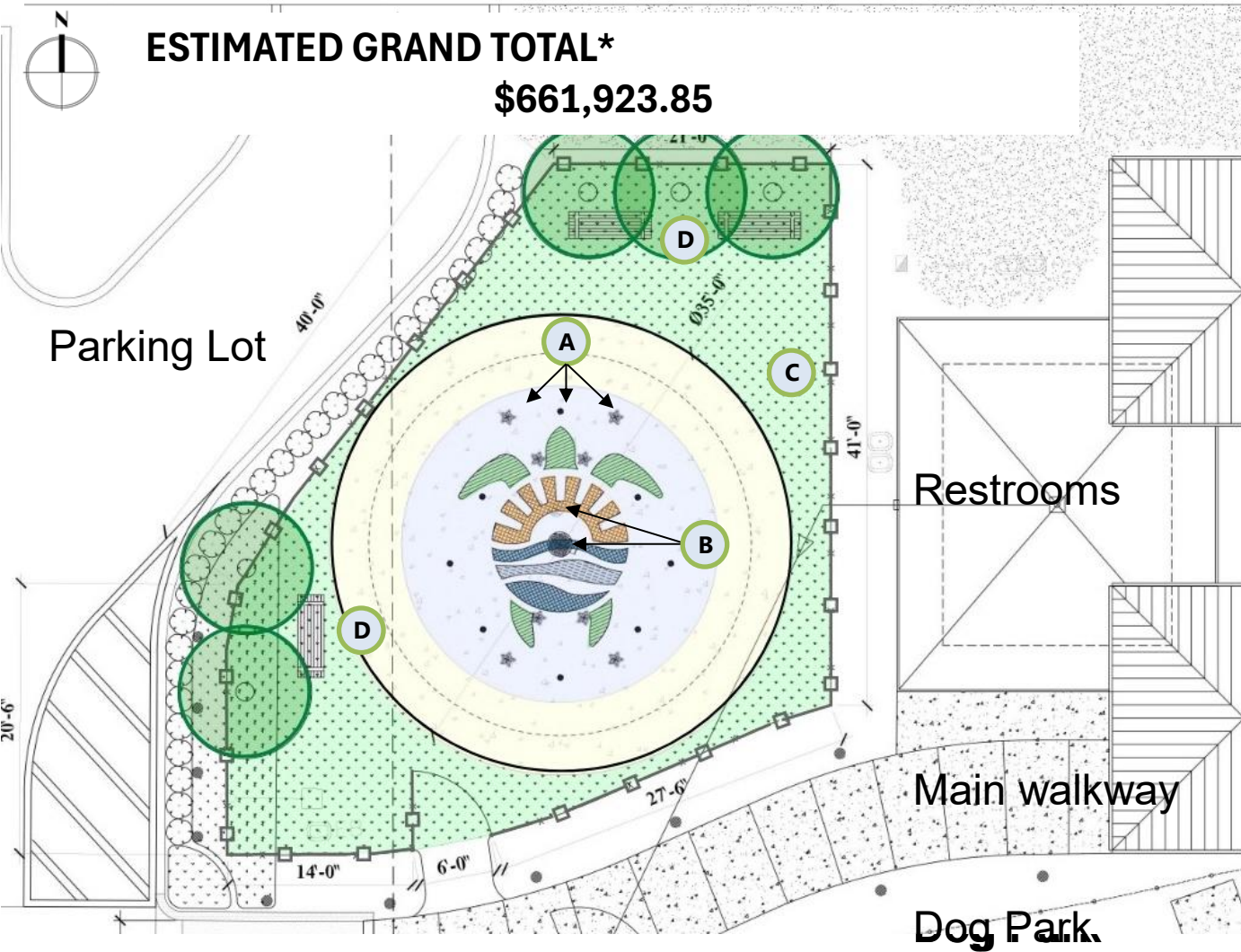
C **MDF:** ADA Accessible Chilled Drinking fountain



D **Ipe:** standard Bench with Back - Alum. Frame

Option 1 Estimated Project Cost: \$510,000

Option 2 Splashpad – Proposed Layout & Equipment





A **VORTEX: sprayers**



B **VORTEX: Drain system & Activator**



C **MDF: ADA Accessible Chilled Drinking fountain**



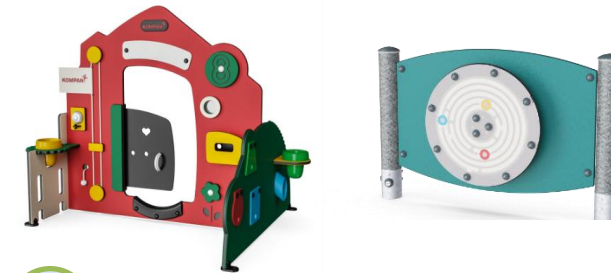
D **Ipe: standard Bench with Back - Alum. Frame**

Option 2 Estimated Project Cost: \$ 711,000

Option 4 Playground – Proposed Layout & Equipment



A **KOMPAN:** Trouper with Roof
Small play structure



B **KOMPAN:** Sensory Play



C **Ipe:** standard Bench with Back - Alum. Frame

Option 3 Estimated Project Cost: \$146,000 + \$15,000

Keating Park Tot Lot – Summary of Preliminary Costs



Keating Park Tot Lot Design Options

DESIGN OPTION	TOTAL PROJECT COST WITH SITE PREP (Material, Installation, Permits, Shop Drawings)	ANNUAL MAINTENANCE
OPTION 1 <i>Playground - West</i>	\$510,000	\$10,000
OPTION 2 <i>Splashpad</i>	\$711,000	\$15,000
OPTION 3 <i>Playground - East</i>	\$146,000	\$10,000
OPTION 3b ADD ALT <i>Sensory units</i>	\$15,000	\$1,500

Thank You For Your Time & Consideration