



PURCHASE ORDER ITEMS FOR ACCOUNTS PAYABLE

01/15/16  
PO NUMBER P214633

DESCRIPTION: 2 EXTERIOR REAR VIEW MIRRORS  
OPTION: 9920

6 R236567 293900012907 N 1.0000 9599.00000 42.4000.90718.536.006452  
Y 011316 EA 9599.00

DESCRIPTION: ENCLOSED CAB WITH AIR CONDITIONING  
OPTION: 2035

7 R236567 293900012908 N 1.0000 372.00000 42.4000.90718.536.006452  
Y 011316 EA 372.00

DESCRIPTION: STROBE LIGHT  
OPTION: 9905

8 R236567 293900012909 N 1.0000 801.00000 42.4000.90718.536.006452  
Y 011316 EA 801.00

DESCRIPTION: REAR BUCKET MANUAL QUICK COUPLER  
OPTION: 5410

9 R236567 293900012910 N 1.0000 15000.00000- 42.4000.90718.536.006452  
N 011316 EA 15000.00-

DESCRIPTION: TRADE-IN ALLOWANCE FOR UNIT 8157,  
A CASE 590 SUPER L #285105.

TOTAL PRICE WITH DISCOUNT IS:  
\$79,422.00

ADVERTISING: NO EMBLEM, LOGO, TAG  
OR OTHER DEVICE OR DESIGN  
PROMOTING THE DEALER MAY BE  
AFFIXED IN ANY MANNER TO ANY  
VEHICLE DELIVERED UNDER THIS  
CONTRACT, EXCEPT FOR EMBLEMS  
INSTALLED BY MANUFACTURER  
IDENTIFYING MANUFACTURE & MODEL.

FLORIDA SHERIFFS ASSOCIATION,  
FLORIDA ASSOCIATION OF COUNTIES

FSA BID NUMBER'S 15-13-0904

CONTACT PERSON AT NORTRAX  
GOVERNMENTAL SALES MANAGER IS:  
GREG DUDEK  
W) 239-470-0822  
FAX) 561-848-7099  
EMAIL: greg.dudek@nortrax.com

CONTACT PERSON AT CITY OF  
HOLLYWOOD: JOEL WALL

PURCHASE ORDER ITEMS FOR ACCOUNTS PAYABLE

01/15/16  
PO NUMBER P214633

954-967-4555

EMAIL: jwall@hollywoodfl.org

\*\*PRIOR TO FINAL PAYMENT BY THE  
CITY, THE VENDOR SHALL PROVIDE THE  
CITY WITH THE MANUFACTURER'S  
STATEMENT OR CERTIFICATE OF ORIGIN  
LISTING THE CITY OF HOLLYWOOD,  
FLORIDA\*\*

CONFIRMATION OF ORDER MUST BE  
RECEIVED BY AGENCY WITHIN 14  
CALENDAR DAYS AFTER RECEIPT OF  
PURCHASE ORDER.

\*\*DELIVERY DATE WILL BE  
APPROXIMATELY WITHIN 60 DAYS OF  
RECEIPT OF PURCHASE ORDER.\*\*

RESOLUTION #R-2016-XXX  
DATED: JANUARY 20, 2016



# CITY OF HOLLYWOOD, FLORIDA

## PROCUREMENT SERVICES DIVISION

### Piggybacking Request Form

(Use for purchase(s) over \$15,000, when piggybacking off other contracts)

Date: January 6, 2016

Department/Office: Public Works

Division/Area: Fleet Maintenance

Contact Person: Joel Wall / Sylvia Glazer

Title: Fleet Coordinator / Public Works Director

Phone: 954.967.4555 / 954.967.4526

Email: [jwall@hollywoodfl.org](mailto:jwall@hollywoodfl.org) /  
[sglazer@hollywoodfl.org](mailto:sglazer@hollywoodfl.org)

1. Requested Vendor: Nortrax, Inc.

Vendor Number: ~~20270~~ 35745  
R0115116

Address: 3933 Martin Luther King Jr. Blvd., West Palm Beach, FL 33404

Contact Person: Greg Dudek

Title: Governmental Sales Manager

Phone: 561-848-6618

Email: [greg.dudek@nortrax.com](mailto:greg.dudek@nortrax.com)

2. Contract title requesting to piggyback?

Awarding Agency: Florida Sheriffs Association Contract Bid Award (15-13-0904).

Contract Expiration Date: September 30, 2016

Copy of Contract and Awarding Agency documentation is attached.

Yes  No

3. Product/Service being requested (be specific). (1) 2016 John Deere 410L 4x4 Backhoe Loader, Specification #23.

4. Detailed description of the products/services function and purpose. Public Utilities is requesting a 2016 John Deere 410L 4x4 Backhoe Loader for the operations of underground maintenance and repairs. The existing vehicle, 2000 Case 590L Backhoe has reached and surpassed its life expectancy due to age and mechanical wear, and can no longer perform at its required operational levels, and will be traded in with \$15,000.00 credit towards the new unit. The Underground Utilities Division performs numerous repairs throughout the City of

*Procurement Service Division use only*

Requisition # R \_\_\_\_\_  
BPO \_\_\_\_\_  
(As Applicable)

Purchase Order # P 214633  
(As Applicable)

Blanket Purchase Order # \_\_\_\_\_  
(As Applicable)

Hollywood's infrastructure, and this backhoe needs to be available for scheduled and emergency requests throughout the City of Hollywood utility service areas. The 2016 John Deere 410L 4x4 Backhoe Loader model was tested to best perform for the needed requirements in the daily services and operations of the Public Utilities Department.

5. Please explain what process the Department/Office took to verify and/or identify this contract. Recommended by the Public Utilities and Public Works Departments.

6. Were alternative contracts evaluated to determine that the City is obtaining the most advantageous contract pricing for the required product/service?

Yes  No

Please explain This is the best price going for this vehicle and pricing is based on the Florida Sheriff's Association Contract. The State of Florida Contract did not bid on this model vehicle for this year's contract.

7. Total cost of the requested product/service. \$79,422.00

8. Total estimated annual (fiscal year) cost of requested product/service. (1) vehicle = \$79,422.00  
Account Number # 42.4000.90718.536.006452

9. Is this product/service covered by a warranty?  Yes  No

If yes, please attach a copy of the warranty details.

10. Would this purchase(s) result in the potential of future purchases for related products/services being restricted to a particular vendor or create a specific vendor as sole source provider for related items?

Yes  No

If yes, please describe the related products/services and estimated cost(s.) \_\_\_\_\_

11. Would this purchase(s) result in any future maintenance costs which are not included in the initial purchase?

Yes  No

If yes, please attach a draft maintenance plan which includes cost estimates and funding source(s.)  
\_\_\_\_\_

12. Is this a grant related purchase?  Yes  No

If yes, please provide details (timeline, expiration dates, milestones, special procurement requirements, etc.)

Will this require matching funds?  Yes  No

What is the grant source? N/A

What is the grant (dollar) amount? N/A

13. Please complete an advanced search of the vendor recommended for award on the Federal Government's Excluded Parties List System at [www.epls.gov](http://www.epls.gov).

*Procurement Service Division use only*

Requisition # R \_\_\_\_\_  
BPO \_\_\_\_\_  
(As Applicable)

Purchase Order # P 214633  
(As Applicable)

Blanket Purchase Order # \_\_\_\_\_  
(As Applicable)

Date of Advanced Search 1/13/16

Company Name(s) Searched  
NORTRAX INC.

Search Results  
N/A

\_\_\_\_\_  
\_\_\_\_\_  
\_\_\_\_\_

\_\_\_\_\_  
\_\_\_\_\_  
\_\_\_\_\_

**REQUESTING DEPARTMENT RECOMMENDATION**

**Note: By signing and returning this form, you are verifying and acknowledging that you have reviewed all portions (scope, terms, conditions, pricing, etc.) of the requested contract and recommend its approval based on the contract complying with the City of Hollywood's scope and pricing requirements and to the best of you knowledge the contract does not violate any applicable policy, statute, governing rule or regulation.**

Joel J. Wall  
Contact Person's Signature  
Mark Dierck  
Supervisor's Signature  
John Gray  
Director's Signature

1/6/16  
Date  
1/6/16  
Date  
1-6-16  
Date

APPROVAL (Procurement Service Division Use Only)			
Verified By:	<u>Mark Dierck</u>	Date	<u>1/15/16</u>
Approved By:	<u>John</u>	Date	<u>1/15/16</u>

Procurement Service Division use only

Requisition # R \_\_\_\_\_  
BPO \_\_\_\_\_  
(As Applicable)

Purchase Order # P 214623  
(As Applicable)

Blanket Purchase Order # \_\_\_\_\_  
(As Applicable)



CITY OF HOLLYWOOD  
INTER-OFFICE MEMORANDUM  
**Underground Utilities Division**  
**Department of Public Utilities**

**DATE:** December 9, 2015 **FILE:** UU-16-006

**TO:** Sylvia Glazer, Director, Public Works

**VIA:** Steve Joseph, P.E., Director, Public Utilities

**VIA:** Francois Domond, P.E., Deputy Director Operations, Public Utilities

**FROM:** *for* Joshua McDermott, Public Utilities Manager, Underground Utilities

**SUBJECT:** Replacement of Backhoe/Case Loader Asset# 93013/**Vehicle 8157**

*12/10/15*  
*12/9/15*  
*(W)*

**ISSUE:**

Request to purchase a replacement for the 2000 Case Loader/Backhoe 590L to be utilized by the Department of Public Utilities/ Underground Utilities Division.

**EXPLANATION:**

The Department of Public Utilities/ Underground Utilities Division is requesting to purchase a new Backhoe/Loader to replace the 2000 Case Loader/Backhoe 590L. The 2000 Case Loader/Backhoe 590L has passed its longevity of usefulness. The engine and transmission continuously fails, and the bucket cylinder constantly leaks and becomes jammed while being used.

Department of Public Works/ Fleet Management Division, records going back to 2007, indicate a total amount of cost for repairs and maintenance to be just under \$30,000.00. Department of Public Works/ Fleet Management Division notes repairs are still needed which estimate between \$15,000.00 and \$20,000.00; not including possible additional cost once the unit is taken apart and evaluated. Based on the information and evaluation provided by Department of Public Works/ Fleet Management Division, the life to date maintenance cost for the 2000 Case Loader/Backhoe 590L is 76% of the original purchase cost of \$65,625.30.

The Department of Public Works/ Fleet Management Division has advised the trade-in value for the 2000 Case Loader/Backhoe 590L in the amount of \$15,000.00 is a fair value. The total cost for the new unit is \$94,422.00 minus (\$15,000.00) trade-in value, totaling \$79,422.00 (see attached quote from Nortrax).

Funding for the purchase of the Replacement of Backhoe/Case Loader is available in account number 42.4000.90718.536.006452, as noted in the Department of Public Utilities, 5-Year Water, Sewer & Stormwater CIP (2016 to 2020), Project Name: Backhoe/Case Loader 410J Replacement, Project# F0079.

**RECOMMENDATION:**

The Department of Public Utilities/ Underground Utilities Division recommends the approval of the purchase of a new Backhoe/ Loader to replace the 2000 Case Loader/ Backhoe 590L.



A JOHN DEERE COMPANY

FLORIDA SHERIFFS ASSOCIATION  
FLORIDA ASSOCIATION OF COUNTIES  
2015-16 Contract for Vehicles and Equipment  
Contract Number 15-13-0904  
Spec#23 4x4 Loader Backhoe  
John Deere 410L Backhoe

November 20, 2015

Quote For: City of Hollywood

**Base Unit:**

One (1) Deere 310SL Backhoe Loader, 4X4, Canopy \$64,690.00  
24" Backhoe Bucket, Deere Two Lever Controls, 1.3 Yd Loader  
Bucket, Standard Backhoe

**Stated Options From Contract:**

JD410L	Model Upgrade to 410L 4X4 1.5 yard loader	12,190.00
6020	Extendable Dipper Stick	5,292.00
9110	Ride Control	1,260.00
9920	2 Exterior Rear View Mirrors	218.00
2035	Enclosed Cab with Air Conditioning	9,599.00
9905	Strobe Light	372.00
5410	Rear Bucket Manual Quick Coupler	801.00

Total Price FOB City of Hollywood \$ 94,422.00

Trade In: Case 590 Super L #285105 (15,000.00)

Total Price less Trade In: \$79,422.00

**Greg Dudek, Governmental Sales Manager**  
3933 Martin Luther King Jr. Blvd West Palm Beach, FL 33404  
Phone (239) 470-0822 Fax (561) 848-7099



# ***BID AWARD ANNOUNCEMENT***

# **15-13-0904**

***Effective Dates:***  
*October 1, 2015– September 30, 2016*

**Cab & Chassis Trucks  
& Other Fleet Equipment**

***Participating Sheriffs Offices & Local Governmental  
Agencies of the State of Florida***

*Coordinated By*

**The  
Florida Sheriffs Association  
& Florida Association of Counties**





## FLORIDA SHERIFFS ASSOCIATION & FLORIDA ASSOCIATION OF COUNTIES

### 4X4 LOADER BACKHOE WITH CANOPY (STANDARD STICK) SPECIFICATION #23

2016 Caterpillar 416  
2016 John Deere 310SL  
2016 New Holland B95C  
2016 Case 580 N

**ALL ITEMS FACTORY INSTALLED UNLESS OTHERWISE INDICATED**

**INSTRUCTIONS:** Listed above, you will find the model numbers of the vehicles that will be included in this year's contract.

ALL ITEMS FACTORY INSTALLED UNLESS OTHERWISE INDICATED

1. ENGINE:

- a. Minimum 87 HP Diesel engine
- b. Dry type, radial seal air cleaner and pre-cleaner unit
- c. Spin on type engine oil filter

2. TRANSMISSION:

- a. Four speed power shift or power shuttle transmission

3. OPERATOR ENVIRONMENT:

- a. OSHA approved ROPS canopy shall be integral
- b. Two front and two rear work and driving lights
- c. Stop and turn signals with flashing hazard lamps
- d. Instrument panel with a complete set of gauges or an electronic monitoring device
- e. Standard horn and audible back-up alarm

4. BRAKES:

- a. Brakes shall be oil immersed, hydraulically actuated, multiple disc on final drive input shaft
- b. Brakes shall be completely enclosed and sealed, fully self-adjusting

5. LOADER (SINGLE TILT CYLINDER):

- a. Loader shall be equipped with a return to dig mechanism
- b. Loader shall have positive down pressure sufficient to lift the tractor front end off level ground
- c. Loader bucket SAE heaped capacity of minimum 1.3 yards with replaceable bolt on edge

6. BACKHOE:

- a. Fixed length dipper stick digging depth approximately 14'
- b. Reach from swing center, approximately 18'
- c. Dump height, approximately 11'3"
- d. Digging force approximately 8,000 lbs.
- e. Bucket dig force, approximately 11,990 lbs.
- f. 24" general purpose bucket with replaceable teeth



## FLORIDA SHERIFFS ASSOCIATION & FLORIDA ASSOCIATION OF COUNTIES

Name of Dealership	Type of Vehicle	Zone	Base Unit Price
<u>4X4 LOADER BACKHOE WITH CANOPY (STANDARD STICK) (Specification #23)</u>			
Ring Power Corporation	2016 Caterpillar 416	Western	\$65,829.00
Ring Power Corporation	2016 Caterpillar 416	Northern	\$65,829.00
Ring Power Corporation	2016 Caterpillar 416	Central	\$65,829.00
Kelly Tractor	2016 Caterpillar 416	Southern	\$66,315.00
Nortrax, Inc.	2016 John Deere 310SL	★ Western	\$64,690.00
Nortrax, Inc.	2016 John Deere 310SL	★ Northern	\$64,690.00
Nortrax, Inc.	2016 John Deere 310SL	★ Central	\$64,690.00
Nortrax, Inc.	2016 John Deere 310SL	★ Southern	\$64,690.00
Growers Equipment	2016 New Holland B95C	Western	\$68,797.00
Growers Equipment	2016 New Holland B95C	Northern	\$68,397.00
Growers Equipment	2016 New Holland B95C	Central	\$67,997.00
Growers Equipment	2016 New Holland B95C	Southern	\$67,597.00
	2016 Case 580 N	Western	-- NB --
Trekker Tractor, LLC	2016 Case 580 N	Northern	\$68,000.00
Trekker Tractor, LLC	2016 Case 580 N	Central	\$68,000.00
Trekker Tractor, LLC	2016 Case 580 N	Southern	\$68,000.00



# FLORIDA SHERIFFS ASSOCIATION & FLORIDA ASSOCIATION OF COUNTIES

## 4X4 LOADER BACKHOE WITH CANOPY (STANDARD STICK) SPECIFICATION #23

### 2016 John Deere 310SL

The John Deere 310SL purchased through this contract comes with all the standard equipment as specified by the manufacturer for this model and FSA's base vehicle specification(s) requirements which are included and made a part of this contract's vehicle base price as awarded by specification by zone.

ZONE:	★ Western	★ Northern	★ Central	★ Southern
BASE PRICE:	\$64,690.00	\$64,690.00	\$64,690.00	\$64,690.00

While the Florida Sheriffs Association and Florida Association of Counties have attempted to identify and include those equipment items most often requested by participating agencies for full size vehicles, we realize equipment needs and preferences are going to vary from agency to agency. In an effort to incorporate flexibility into our program, we have created specific add/delete options which allow the purchaser to tailor the vehicle to their particular wants or needs.

The following equipment delete and add options and their related cost are provided here to assist you in approximating the total cost of the type vehicle(s) you wish to order through this program. Simply deduct the cost of any of the following equipment items you wish deleted from the base unit cost and/or add the cost of any equipment items you wish added to the base unit cost to determine the approximate cost of the type vehicle(s) you wish to order.

NOTE: An official listing of all add/delete options and their prices should be obtained from the appropriate dealer in your zone when preparing your order. Additional add/delete options other than those listed here may be available through the dealers, however, those listed here must be honored by the dealers in your zone at the stated prices.



<b>VEHICLE:</b>	310SL			
<b>DEALER:</b>	Nortrax, Inc.	Nortrax, Inc.	Nortrax, Inc.	Nortrax, Inc.
<b>ZONE:</b>	★Western	★Northern	★Central	★Southern
<b>BASE PRICE:</b>	\$64,690.00	\$64,690.00	\$64,690.00	\$64,690.00

9110 <sup>1</sup>	Optional equipment - specify <i>Ride control</i> <sup>1</sup>	\$1,260.00 <sup>1</sup>
9920 <sup>1</sup>	Optional equipment - specify <i>Exterior rear view mirrors</i> <sup>1</sup>	\$218.00 <sup>1</sup>
9917 <sup>1</sup>	Optional equipment - specify <i>Radio AM/FM/WB</i> <sup>1</sup>	\$552.00 <sup>1</sup>
9905 <sup>1</sup>	Optional equipment - specify <i>Strobe light</i> <sup>1</sup>	\$372.00 <sup>1</sup>
3095 <sup>1</sup>	Optional equipment - specify <i>Auto-shift transmission</i> <sup>1</sup>	\$1,870.00 <sup>1</sup>
2010 <sup>1</sup>	Optional equipment - specify <i>Quarter cab, with front windshield only. Not available on John Deere 410L or 710K backhoes.</i> <sup>1</sup>	\$778.00 <sup>1</sup>
2035 <sup>1</sup>	Optional equipment - specify <i>Enclosed cab with heater and air conditioning</i> <sup>1</sup>	\$9,599.00 <sup>1</sup>
6020 <sup>1</sup>	Optional equipment - specify <i>Extendable dipper stick</i> <sup>1</sup>	\$5,292.00 <sup>1</sup>
6230 <sup>1</sup>	Optional equipment - specify <i>Auxiliary hydraulics, 2-way flow</i> <sup>1</sup>	\$2,338.00 <sup>1</sup>
6220 <sup>1</sup>	Optional equipment - specify <i>Auxiliary hydraulics, 1-way flow</i> <sup>1</sup>	\$1,695.00 <sup>1</sup>
5285 <sup>1</sup>	Optional equipment - specify <i>Pilot control joysticks</i> <sup>1</sup>	\$1,686.00 <sup>1</sup>
7080 <sup>1</sup>	Optional equipment - specify <i>3-Function loader hydraulics</i> <sup>1</sup>	\$2,067.00 <sup>1</sup>
7085 <sup>1</sup>	Optional equipment - specify <i>Loader coupler, 3rd function hydraulics on front, and ride control</i> <sup>1</sup>	\$6,310.00 <sup>1</sup>
7685 <sup>1</sup>	Optional equipment - specify <i>Multi purpose bucket, 1.32 cu. yd. capacity</i> <sup>1</sup>	\$4,491.00 <sup>1</sup>
5410 <sup>1</sup>	Optional equipment - specify <i>Rear bucket manual quick coupler</i> <sup>1</sup>	\$801.00 <sup>1</sup>
PT-07 <sup>1</sup>	Optional equipment - specify <i>Rear mounted swinger / coupler for backhoe bucket</i> <sup>1</sup>	\$6,892.00 <sup>1</sup>
	Temporary tag	NA
	Transfer existing registration (must provide tag number)	NA
	New state tag (specify state, county, city, sheriff, etc.)	NA
	Maintenance Plan - specify <i>Please call for quote</i> <sup>1</sup>	NA <sup>1</sup>
	Maintenance Plan - specify <i>Please call for quote</i> <sup>1</sup>	NA <sup>1</sup>
	Extended Warrant Plan – specify <i>Please call for quote</i> <sup>1</sup>	NA <sup>1</sup>

<b>VEHICLE:</b>	310SL			
<b>DEALER:</b>	Nortrax, Inc.	Nortrax, Inc.	Nortrax, Inc.	Nortrax, Inc.
<b>ZONE:</b>	★Western	★Northern	★Central	★Southern
<b>BASE PRICE:</b>	\$64,690.00	\$64,690.00	\$64,690.00	\$64,690.00

	Extended Warrant Plan – specify <i>Please call for quote</i> <sup>1</sup>	NA <sup>1</sup>
25% <sup>1</sup>	Discount percentage off manufacturer's current published retail prices for non-specified options and any optional models bid. This discount ONLY APPLIES to a downgrade or an upgrade to the model listed in this specification. It does not apply to a completely different make or model. (The discount is applied to the manufacturer's current published retail prices.) <i>Discount 25%</i> <sup>1</sup>	\$25.00 <sup>1</sup>

# Extended Coverage



This literature has been compiled for worldwide circulation. While general information, pictures, and descriptions are provided, some illustrations and text may include finance, credit, insurance, product options, and accessories NOT AVAILABLE in all regions. PLEASE CONTACT YOUR LOCAL DEALER FOR DETAILS. John Deere reserves the right to change specification and design of all products described in this literature without notice.



DKE6828 Litho in U.S.A. (14-06)

[JohnDeere.com](http://JohnDeere.com)



[JohnDeere.com](http://JohnDeere.com)



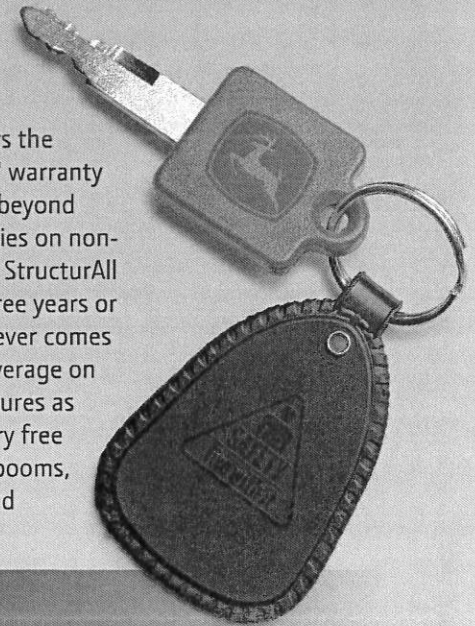
# Building peace of mind

Standard warranty promises that, for construction, forestry,\* and commercial worksite machines, we'll fix all failures due to defect in material or workmanship for the first 12 months after delivery, free of charge.

But these days, many machine owners feel they need more protection. Extended warranties are an excellent way to protect your cash flow and minimize the risk of doing business. Whether you're a contractor or logger we're standing behind our products.



*\*See your local dealer for complete details.*



John Deere also offers the exclusive StructurAll™ warranty that goes above and beyond the standard warranties on non-CWP equipment. The StructurAll warranty provides three years or 10,000 hours (whichever comes first) of “no-fear” coverage on major machine structures as installed at the factory free of charge, including booms, articulation joints, and mainframes.

## Extended Coverage is an additional manufacturer-backed warranty program that makes good business sense:

- It's backed by John Deere Construction & Forestry Company — and honored by all Construction and Forestry dealers.
- Machines covered by an extended warranty can be taken to any North American Construction and Forestry dealer for service.
- There is no deductible during the Standard Warranty and a \$200 deductible on non-powertrain repairs during Full-Machine Extended Coverage.
- Standard or Extended Coverage warranty can be transferred when you sell or trade your machine.<sup>†</sup>
- Financing is available through John Deere Finance programs.

<sup>†</sup>Some restrictions apply.

# Why it pays to extend your coverage

Extended warranties provide additional protection that shields you from risk and stress. They are a valuable management tool because they give you fixed costs for covered, qualified machine repairs over a given period of time.

## Certified Used equipment

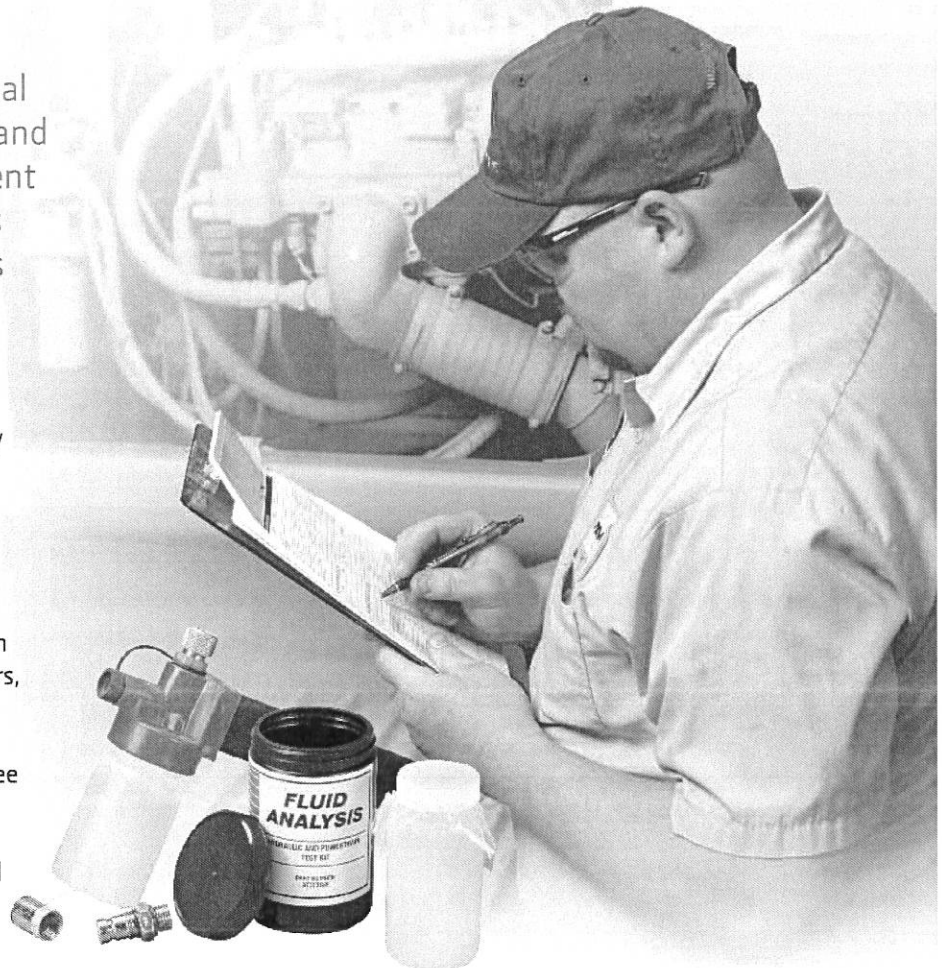
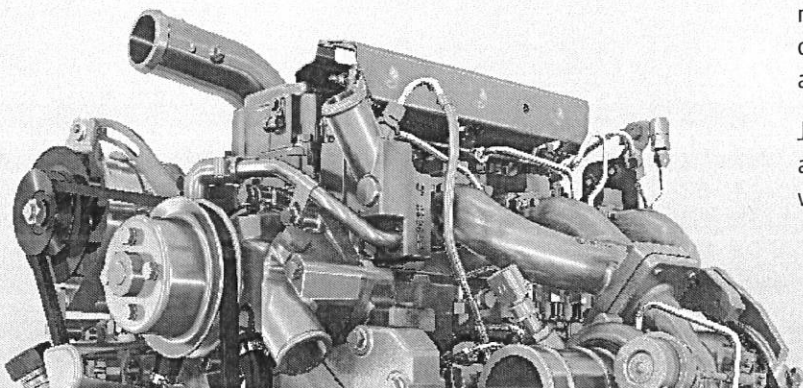
You can purchase Certified Used equipment warranty from participating dealers on qualifying machines. Here are some details:

- Requires completed machine evaluation.
- For construction equipment newer than five years old with less than 5,000 hours.
- For skidders less than five years old with fewer than 5,000 hours, plus tracked feller bunchers/harvesters, wheeled harvesters, and foresters newer than five years old with less than 10,000 hours.
- For Commercial Worksite Products newer than three years old with less than 3,000 hours.
- Covers powertrain only.\*
- Six- or 12-month coverage available with unlimited machine hours.\*

*\*Additional coverage may be available; check with your participating dealer.*

## Owner responsibility

All you have to do is perform scheduled maintenance as outlined in the operator's manual and Extended Coverage warranty contract, and keep accurate maintenance records. Ask your dealer about an Ultimate Uptime program to optimize your machine's availability and productivity.



## Make fluid analysis part of your maintenance program

Fluid analysis helps you reduce downtime, lower repair costs, increase drain intervals, and save money. It keeps you up-to-date on the condition of all your machine's major components and helps you make smart decisions on machine maintenance before and after your Standard and Extended Coverage expires.

John Deere requires fluid analysis on most construction and forestry machines with new Extended Coverage warranty contracts or extensions.

# Expanded range of coverage for new equipment

Support offers may include everything from PM notifications to total repair and maintenance agreements to best fit your needs. Want full coverage on the machine, or just the engine? Need 3,000 hours of coverage, or would 5,000 make more sense for the work you do?

## Items not covered by Extended Coverage warranty:

- Ground-engaging tools such as cutting edges and bucket teeth.
- Hydraulic hoses, lines, and fittings.
- Maintenance items and consumables such as oil, filters, diesel exhaust fluid (DEF), and fuel.
- Hydraulic pressure checks and adjustments.
- Aftermarket attachments such as sweepers, drills, hammers, saws, delimiters, feller bunchers, etc.
- Wear items.
- Miscellaneous items.\*
- Damage to machine from abuse or misuse.
- Collateral damage.
- Hauling expenses, travel time, mileage, overtime, or second-shift premiums.

\*Batteries, tires, and radios come with a Direct Supplier Warranty that covers failure due to defective material and workmanship.



## Choose one of these four options:

1) Engine Only; 2) Powertrain; 3) Powertrain Plus Hydraulics; 4) Full Machine, or combination of Full Machine and one Powertrain option. Coverage ends when date or hour limit expires. *(Items in red indicate coverage added to preceding option.)*

### Engine-Only Coverage

#### ENGINE:

Engine and all components within  
Cylinder head and gasket  
ECU  
Electronic engine-speed-control system  
Engine block  
Engine oil cooler and aftercooler  
Flywheel housing and gasket  
Front and rear engine seals  
Front damper  
Hydraulic actuator  
Injection nozzles  
Injection pump and gasket  
Manifolds and gaskets  
Oil pan and gasket  
Pressure/temperature sensors and sending units  
Pressure/temperature sensors and sending units — EGR system manifold  
Ring gear and flywheel  
Rocker arm cover and gasket  
Thermostats  
Timing gear cover  
Turbocharger and gaskets  
Water pump and gasket

Timing gear cover

Turbocharger and gaskets  
Water pump and gasket  
Engine speed controls and linkages — excavators

#### TRANSMISSION/DIFFERENTIAL:

Axle(s) and differential(s)  
Clutch housing (except dry clutch disk)  
Driveshaft with universal joints  
Electronic and/or hydraulic control valves  
Excavator rotary manifold  
Final drive  
Front-wheel-drive sensors (not wire harness)  
Hydraulic-front-wheel-drive axle and wheel assembly (including drive pump and motor, electronic control, solenoid control valve, and divider valve)  
Hydrostatic system components (including propel motor, hydrostatic/hydraulic pump, and related control valves powering propel and/or swing function [not dig function])  
Mechanical-front-wheel-drive differential/axle assembly with driveshaft, universal joint, and control  
Pump and valve controller  
Reverser with control valve  
Splitter drive  
Swing gearbox and bearings  
Swing motor and brake  
Torque converter  
Tracked feller buncher rotary manifold  
Transfer drive  
Transmission

### Powertrain Coverage

#### ENGINE:

Engine and all components within  
Cylinder head and gasket  
ECU  
Electronic engine-speed-control system  
Engine block  
Engine oil cooler and aftercooler  
Flywheel housing and gasket  
Front and rear engine seals  
Front damper  
Hydraulic actuator  
Injection nozzles  
Injection pump and gasket  
Manifolds and gaskets  
Oil pan and gasket  
Pressure/temperature sensors and sending units  
Pressure/temperature sensors and sending units — EGR system manifold  
Ring gear and flywheel  
Rocker arm cover and gasket  
Thermostats

#### HYBRID-ELECTRIC COMPONENTS:

Brake resistor  
Brake resistor cable assembly  
Electric motor  
Generator  
Generator cable assembly  
Motor cable assembly  
Power electronics inverter (DLR)

#### ELECTRICAL:

Sensors — rotary

#### BRAKES:

Wet park brake pinion shaft, bearing, and bearing quill (motor graders only)  
Wet service brakes

## Powertrain Plus Hydraulics Coverage

### ENGINE:

Engine and all components within  
Cylinder head and gasket  
ECU  
Electronic engine-speed-control system  
Engine block  
Engine oil cooler and aftercooler  
Engine speed controls and linkages — excavators  
Flywheel housing and gasket  
Front and rear engine seals  
Front damper  
Hydraulic actuator  
Injection nozzles  
Injection pump and gasket  
Manifolds and gaskets  
Oil pan and gasket  
Pressure/temperature sensors and sending units  
Pressure/temperature sensors and sending units — EGR system manifold  
Ring gear and flywheel  
Rocker arm cover and gasket  
Thermostats  
Timing gear cover  
Turbocharger and gaskets  
Water pump and gasket

### TRANSMISSION/DIFFERENTIAL:

Axle(s) and differential(s)  
Clutch housing (except dry clutch disk)  
Driveshaft with universal joints  
Electronic and/or hydraulic control valves  
Excavator rotary manifold  
Final drive  
Front-wheel-drive sensors (not wire harness)  
Hydraulic-front-wheel-drive axle and wheel assembly (including drive pump and motor, electronic control, solenoid control valve, and divider valve)  
Hydrostatic system components (including propel motor, hydrostatic/hydraulic pump, and related control valves powering propel and/or swing function [not dig function])  
Mechanical-front-wheel-drive differential/axle assembly with driveshaft, universal joint, and control

Pump and valve controller  
Reverser with control valve  
Splitter drive  
Swing gearbox and bearings  
Swing motor and brake  
Torque converter  
Tracked feller buncher rotary manifold  
Transfer drive  
Transmission  
Accumulator and related relief valves (transmission)  
Hydraulic differential lock valve and associated parts

### HYDRAULIC COMPONENTS:

Control and load-holding valves  
Cylinder packing kits  
Hydraulic cylinders  
Hydraulic oil cooler  
Hydraulic pumps, motors, and related control valves  
Hydraulic reservoir  
Locking pin cylinder  
Pilot controls

### HYBRID-ELECTRIC COMPONENTS:

Brake resistor  
Brake resistor cable assembly  
Electric motor  
Generator  
Generator cable assembly  
Motor cable assembly  
Power electronics inverter (DLR)

### ELECTRICAL:

Sensors — rotary

### BRAKES:

Wet park brake pinion shaft, bearing, and bearing quill (motor graders only)  
Wet service brakes  
Wet steering brakes and clutches  
Brake accumulator (ADT only)

### STEERING:

Crossover relief valve  
Priority valve  
Steering pump  
Steering valves and cylinders

## Full-Machine Coverage

### ENGINE:

Engine and all components within  
Cylinder head and gasket  
ECU  
Electronic engine-speed-control system  
Engine block  
Engine oil cooler and aftercooler  
Engine speed controls and linkages — excavators  
Flywheel housing and gasket  
Front and rear engine seals  
Front damper  
Hydraulic actuator  
Injection nozzles  
Injection pump and gasket  
Manifolds and gaskets  
Oil pan and gasket  
Pressure/temperature sensors and sending units  
Pressure/temperature sensors and sending units — EGR system manifold  
Ring gear and flywheel  
Rocker arm cover and gasket  
Thermostats  
Timing gear cover  
Turbocharger and gaskets  
Water pump and gasket  
Engine mounts and supports  
Engine oil lines  
Engine speed controls and linkages  
Filter mount  
Fuel lines  
Fuel tank and associated parts  
Fuel transfer pump and gasket  
Oil filler tube  
Pulleys  
Radiator and hoses  
Water piping

### TRANSMISSION/DIFFERENTIAL:

Accumulator and related relief valves (transmission)  
Axle(s) and differential(s)  
Clutch housing (except dry clutch disk)  
Driveshaft with universal joints  
Electronic and/or hydraulic control valves  
Excavator rotary manifold  
Final drive  
Front-wheel-drive sensors (not wire harness)

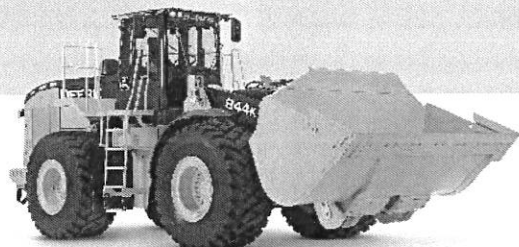
Hydraulic differential lock valve and associated parts  
Hydraulic-front-wheel-drive axle and wheel assembly (including drive pump and motor, electronic control, solenoid control valve, and divider valve)  
Hydrostatic system components (including propel motor, hydrostatic/hydraulic pump, and related control valves powering propel and/or swing function [not dig function])  
Mechanical-front-wheel-drive differential/axle assembly with driveshaft, universal joint, and control  
Pump and valve controller  
Reverser with control valve  
Splitter drive  
Swing gearbox and bearings  
Swing motor and brake  
Torque converter  
Tracked feller buncher rotary manifold  
Transfer drive  
Transmission  
Control rods  
Differential lock valve and associated parts  
External oil lines  
Filler tubes (transmission)  
Filter screens  
Oil cooler  
Sending units and sensors  
Shift-control linkage

### HYBRID-ELECTRIC COMPONENTS:

Brake resistor  
Brake resistor cable assembly  
Electric motor  
Generator  
Generator cable assembly  
Motor cable assembly  
Power electronics inverter (DLR)

### HYDRAULIC COMPONENTS:

Control and load-holding valves  
Cylinder packing kits  
Hydraulic cylinders  
Hydraulic oil cooler  
Hydraulic pumps, motors, and related control valves  
Hydraulic reservoir  
Locking pin cylinder  
Pilot controls



## Full-Machine Coverage *(continued)*

### **BRAKES:**

Brake accumulator (ADT only)  
Wet park brake pinion shaft, bearing, and bearing quill (motor graders only)  
Wet service brakes  
Wet steering brakes and clutches  
Brake accumulator (non-ADT)  
Brake pump  
Brake valve  
Pressure-reducing valve  
Unloading valve

### **ELECTRICAL:**

Sensors — rotary  
Alternator  
Gauges  
Indicators  
Instruments  
Sensors  
Starter  
Starter drive  
Starter solenoid  
Switches  
Voltage regulator  
Wiper motors  
Wiring harnesses

### **FACTORY-INSTALLED AIR CONDITIONING:**

Accumulator  
Clutch  
Compressor  
Condenser  
Dryer  
Evaporator  
Expansion valve  
Heater hose  
Pulley  
Seals and gaskets  
Temperature-control programmer

### **OTHER:**

Bucket linkages  
Circle drive gearbox  
Fan and fan drive  
Motor grader circle  
Scarifier and ripper linkages  
Undercarriage components — undercarriage wear items not covered (except by special contract)  
Winch — factory installed only

### **STEERING:**

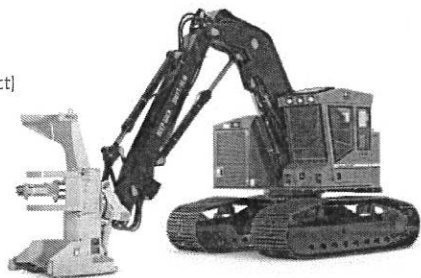
Crossover relief valve  
Priority valve  
Steering pump  
Steering valves and cylinders  
Axles  
Secondary steering system components  
Spindles and supports  
Steering linkage  
Tie rods and tie-rod ends

### **STRUCTURES:**

Arm  
Articulation joint (including pins and bushings)  
Bin frame  
Boom  
Carbody  
C-frame  
Circle frame  
Dipperstick  
Draft frame  
Engine frame  
Equipment frame  
Forklift mast and frame  
Grapple arch and grapple boom  
Loader arm  
Loader frame  
Mainframe  
Moldboard lift arm  
Rollover protection structure (ROPS)  
Side frame  
Swing frame  
Track frame  
X-frame  
Z-bar

### **PNEUMATIC COMPONENTS (ARTICULATED DUMP TRUCK ONLY):**

Airline hoses, lines, and fittings  
Brake system air components  
Dump body  
Four-way protection valve  
Unloading valve



There's enough day-to-day stress in the construction and forestry business without worrying about unpredictable machine-repair expenses. That's why you owe it to yourself — and your bottom line — to find out about Extended Coverage warranty.

Extended Coverage is a factory-backed extended warranty that's flexible enough to meet the needs of any business or government agency. Call your John Deere dealer for all the details today.

This brochure does not include all the information you need to know about Extended Coverage warranties. For complete details, read a copy of the Extended Coverage warranty contract.

**FLORIDA DEPARTMENT OF STATE  
DIVISION OF CORPORATIONS****Detail by Entity Name****Foreign Profit Corporation**

NORTRAX, INC.

**Filing Information****Document Number** F08000001996**FEI/EIN Number** 36-4485436**Date Filed** 05/02/2008**State** DE**Status** ACTIVE**Principal Address**4042 PARK OAKS BLVD  
SUITE 200  
TAMPA, FL 33610

Changed: 11/01/2010

**Mailing Address**4042 PARK OAKS BLVD  
SUITE 200  
TAMPA, FL 33610

Changed: 11/01/2010

**Registered Agent Name & Address**C T CORPORATION SYSTEM  
1200 SOUTH PINE ISLAND ROAD  
PLANTATION, FL 33324**Officer/Director Detail****Name & Address**

Title D

RUCCOLO, DOMENIC G  
1515 5TH AVE  
MOLINE, IL 61265

Title P

MURPHY, TIMOTHY J  
4042 PARK OAKS BLVD, SUITE 200  
TAMPA, FL 33610

Title VP

RICHMOND, BEN  
 4042 PARK OAKS BLVD. SUITE 200  
 TAMPA, FL 33610

Title AT

MACK, MICHAEL J  
 ONE JOHN DEERE PLACE  
 MOLINE, IL 61265

Title AS

JARRETT, THOMAS K  
 ONE JOHN DEERE PLACE  
 MOLINE, IL 61265

Title VP

McGuigan, Scott  
 4042 PARK OAKS BLVD  
 SUITE 200  
 TAMPA, FL 33610

**Annual Reports**

Report Year	Filed Date
2013	03/07/2013
2014	02/07/2014
2015	03/03/2015

**Document Images**

<a href="#">03/03/2015 -- ANNUAL REPORT</a>	<a href="#">View image in PDF format</a>
<a href="#">02/07/2014 -- ANNUAL REPORT</a>	<a href="#">View image in PDF format</a>
<a href="#">03/07/2013 -- ANNUAL REPORT</a>	<a href="#">View image in PDF format</a>
<a href="#">01/23/2012 -- ANNUAL REPORT</a>	<a href="#">View image in PDF format</a>
<a href="#">01/05/2011 -- ANNUAL REPORT</a>	<a href="#">View image in PDF format</a>
<a href="#">11/01/2010 -- ANNUAL REPORT</a>	<a href="#">View image in PDF format</a>
<a href="#">04/27/2010 -- ANNUAL REPORT</a>	<a href="#">View image in PDF format</a>
<a href="#">04/22/2009 -- ANNUAL REPORT</a>	<a href="#">View image in PDF format</a>
<a href="#">05/02/2008 -- Foreign Profit</a>	<a href="#">View image in PDF format</a>