

Amended City of Hollywood, FL.

"Citywide CCTV & ALPR Security Solution"

January 27, 2016

(All Pricing Subject to Change on February 17, 2016)

Proposal number # 967547A

Presented by:



with





PROPOSAL INDEX:

SECTION 1: Introduction Letter.

SECTION 2: Financial Summary Page.

SECTION 3: Statement of Work.



January 27, 2016

From:

Mr. Peter Van Kirk
Safeware, Inc.
Director, Government Security
4403 Forbes Blvd.,
Lanhan, MD 20706

To:

Mr. Joel Wasserman
City of Hollywood
Director, Procurement Services
Hollywood | Florida | 33022

Dear Mr. Wasserman,

Safeware is pleased to provide to the City of Hollywood, Florida a multiple location security solution with an expandable high bandwidth video surveillance system which includes Closed Circuit TV Cameras, wired & wireless connectivity, and ALPR to support this Citywide CCTV and ALPR Solution. This Safeware Security Solution is being provided by the partnership team consisting of Safeware, Inc. with ATCi as Safeware's sub-contractor and Accordant Communication as Safeware's sub-contractor. This solution is being procured under the Safeware US Communities government contract vehicle and all Safeware US Communities contract pricing, terms and conditions are applicable and compliant under the US Communities government contract titled: "Homeland Security & Public Safety/Emergency Preparedness" contract #: 4400001839. The attached amended proposal number # 967547A is from Safeware and Safeware is wholly responsible for the actions of and payment to the Safeware subcontractors.

The U.S. Communities contract aggregates the purchasing power of more than 90,000 public agencies nationwide by offering Participating Public Agencies the ability to make purchases through existing, competitively solicited contracts between a supplier and a lead public agency. Currently there are more than 55,000 participating State & Local government agencies utilizing the US Communities contract. Utilizing this contract saves agencies time & money. Since the contract was already competed there is no need for your city to replicate the RFP process plus with the aggregate nationwide purchasing power, this contract provides your city a 41% or greater discount off of the Safeware list price. With project timeframe's being compressed this contract vehicle grants your city the ability to meet critical project deadlines. Lastly by utilizing this contract your city is not publically exposing your security vulnerabilities.

This is a complete security solution and is being provided at a "firm fixed price" totaling \$1,311,481 as defined in our line item pricing. The payment schedule is per the U.S. Communities contract and the agreed upon milestone payment schedule.

In closing, Safeware appreciates the trust the City of Hollywood, FL has extended in our team and we feel this security solution will best serve the security and public safety needs of the City of Hollywood, Florida.

Sincerely,

A handwritten signature in black ink that reads "Peter Van Kirk". The signature is written in a cursive, flowing style.

Peter Van Kirk
Safeware Director, Government Security Solutions

City of Hollywood Milestone and Payment Schedule

	Accordant - Wireless	Duration in Days	ATCi - CCTV/ALPR Milestones	Duration in Days
Phase 0 Total				
1. RF and Network Engineering & Permit Submission	\$29,741	3	1. Permitting	\$20,400 30
1a. RF Engineering and Permit Data Submission for Radius, Water Tower, Renaissance and North Beach Condo Assoc.	\$13,218		2. Server Upgrades	\$17,432 30
1b. Engineering and Permitting for Northbeach and Renaissance Condo Assoc.	\$14,051		3. Fusion Center Programming	\$96,360 30
2. Police Station Microwave Backhaul	\$30,794	3		
3. Radius Backhaul	\$31,064	3		
4. Water Tower Backhaul	\$31,003	3		
5. Renaissance Backhaul	\$15,789	3		
6. North Beach Condo Assoc. Backhaul	\$15,910	3		
7. Radius to Downtown Van Buren Parking	\$15,477			
7b. Firewalled Network Access Design	\$14,551			
CHANGE				
Total	\$211,599		Total	\$134,192
Safeware Payment	\$345,791			
Total Duration Running Concurrently		62		
Phase 0 Total				
	\$345,791			
Difference from contract		\$55,864		
Phase 1 North Beach				
8. North of Green St. Poles	\$14,142	4	4. Fusion Center Programming	\$22,492 4
9. South of Green St. Poles	\$14,612	4	5. North Beach Poles 1-4 CCTV	\$69,769 8
			6. North Beach Poles 5-9 CCTV	\$87,212 8
			7. North Beach LPR's	\$53,444 8
Total	\$28,753		Total	\$232,917
Safeware Payment	\$261,670			
Total Duration Running Concurrently		36		
Phase 1 North Beach Total				
	\$261,670			
Difference from contract		(\$32,650)		
Phase 2 Downtown				
10. Downtown Poles	\$18,379	6	8. Fusion Center Programming	\$17,358 4
			9. Downtown CCTV	\$69,792 14
Total	\$18,379		Total	\$87,150
Safeware Payment	\$105,529			
Total Duration Running Concurrently		18		
Phase 2 Downtown Total				
	\$105,529			
Difference from contract		\$8,455		
Phase 3 Federal Hwy				
11. Federal Hwy South Radius	\$14,134	5	10. S. Fed. Rodman to Fletcher/FS 105 CCTV	\$52,344 10
12. Federal Hwy South Poles	\$44,509	5	11. Van Buren to Dewey CCTV	\$52,344 10
13. Young Circle Backhaul	\$19,335	5	12. Young Circle CCTV	\$61,469 10
14. Young Circle Poles	\$7,751	5	13. Fed Hwy North Radius to Hayes CCTV	\$69,792 10
15. Federal Hwy North Radius	\$17,611	5	14. Fed Hwy N. Roosevelt - Sheridan CCTV	\$52,344 12
16. Federal Hwy North Poles	\$28,918	5	15. Young Circle LPR's	\$100,849 12
			16. FS 105 LPR's	\$50,425 8
			17. Sheridan/North Federal Hwy LPR's	\$50,425 8
Total Duration Running Concurrently		43		
Total	\$105,173		Total	\$489,992
Safeware Payment	\$595,164			
Phase 3 Federal Hwy Total				
	\$595,164			
Difference from contract		(\$31,996)		

*CCTV acceptance is defined by viewing 20 frames per second in the Fusion Center, access recorded video and ability to create a DVD of video with date and time stamp.

*LPR acceptance is defined by the Vigilant Raptor 3 cameras are capable of maintaining a capture rate and read accuracy of at least 85% for one lane of traffic, when installed per recommended specifications. Machine readable plates will need to be IR reflective not oxidized or damaged, be unobstructed, and be readable by the client's eye in the images captured. Due to FDOT issues LPR cameras will have to be mounted on different pole locations, the Safeware team and manufacturer field engineering staff will provide a report after Notice to Proceed of the new camera locations as a replacement to previous design that meet camera specifications.

Grand Total (incl. Change Order 1)	\$1,308,154
Contract Grand Total	\$1,311,481
*Total Change	(\$3,327)

*This additional amount will still result in a net zero change in the overall contract price due to modifications and reconfiguration of phase 3.

Statement of Work:

The Safeware Team consisting of Safeware, ATCi Communications, and Accordant Communications herein known as The Safeware Team will provide a surveillance and ALPR Solution for the following phases: Federal Highway, North Beach, and Downtown. The details of each of the phases along with its components are outlined on individual breakdowns. The City of Hollywood PD and IT department have determined critical locations that will have License Plate capture equipment and surveillance cameras; locations have been placed on a map to provide a visual identification of the area and coverage (this is displayed on the drawings section of the proposal). The surveillance and capture cameras will be viewed and controlled at the new FUSION CENTER under construction by the City of Hollywood in the 4th floor of the Police Department.

Over the past several months The City has conducted extensive testing and research through independent consultants and manufacturers on ALPR technology, surveillance camera equipment, and video management systems for the deployment. The combination chosen by the City for this upgrade is as follows:

Video Management Solution: ONSSI

Surveillance Cameras: Samsung PTZ SNP6200 and Sony SNC-HM662.

License Plate Capture Equipment: Vigilant Solution; Raptor 3.

The Safeware Team, Inc. will provide a complete installation of all edge devices (surveillance and ALPR equipment), load the software and program all the components at the FUSION CENTER on servers provided by the Safeware Team, and workstations provided by the City, to match the minimum requirements of the manufacturer.

It is hereby understood the locations for the equipment/poles are tentative and are subject to change as the viability of such locations due to ownership, structural integrity issues or budgetary constraints. In the event locations are unattainable, the city shall determine whether alternative locations or equipment will be assigned or removed.

SYSTEM PARAMETERS: The surveillance system is to achieve 20FPS live viewing and recording, 24/7, for 30 days of storage at High Definition 1080P resolution. The License plate recognition system will be mounted and installed per manufacturer requirements, and certified by Vigilant (ALPR manufacturer) prior to a hand over to the City of Hollywood. Safeware Team will guarantee the Vigilant Raptor 3 cameras are capable of maintaining a capture rate and read accuracy of at least 85% for one lane of traffic, when installed per recommended specifications. Machine readable plates will need to be IR reflective not oxidized or damaged, be unobstructed, and be readable by the client's eye in the images captured. NOTE: The camera locations will be verified to meet manufacture specifications by the City of Hollywood and Safeware Teams prior to the commencement of each phase.

For the Video and Data transmission of the edge devices, The Safeware Team will be engineering a dedicated Wireless network on Federal Highway Corridor from Fletcher to Sheridan, North Beach from Balboa to Forrest on A1A, and Downtown covering both Hollywood Blvd. and Harrison on three intersections. The intersections chosen for the Downtown wireless phase will be 21st Ave, 20th Ave, and 19th Ave.

The RF System consists of three layers of RF. The main layer being the high throughput licensed links. These links will not receive any interference and have the ability to be expanded as well as placed in a ring

with future phases for redundancy. The second layer of the RF network is a high speed point to point set of links to distribute the network to locations that will feed the camera locations. These locations will then have the final layer that aggregates all of the camera locations for backhaul. The distribution and aggregation layers of the network will use unlicensed point to point and point to multi-point to focus the signal in a manner that will mitigate interference as well as extract the highest throughput available. The use of point to point and point to multi-point radios ensures that throughput and latency will not affect the video transmission. The wireless design will allow the City future growth at each pole (edge device). All wireless location must have power and rooftop access where needed, provided by the City.

The radios selected for this system are industrial/carrier grade radios from Cerragon. These radios have many carrier grade features not seen in commercial grade off the shelf radios. They are designed for harsh

environments and to carrier standards. Please see the enclosed specification sheets for further information. The radio is purchased with a license of 350mbps for each core. Meaning, that the radio is capable of 350mbps in each direction. Since this is a download centric install, up to 80% of the uplink throughput can then be tuned to the download speed making the download to far exceed the requirement at over 500mbps. The license used for this link is actually the 350mbps license for each core; 2 cores = 350mbps symmetrical. 80% tuning of uplink and downlink, gives us 630mbps

TEAM:

Safeware: Prime Contractor

Subcontractor to Safeware: ATCi Communications, Inc. – To provide a complete, CCTV Surveillance, and ALPR system integrated to ONSSI including programming of the head end, workstations at the FUSION CENTER.

Subcontractor to Safeware: Accordant Communications - Supply Wireless infrastructure for the CCTV and ALPR solution.

“Safeware will not assign this agreement to any other person, firm or corporation without written consent by the customer and may not subcontract any activities which may be performed under this agreement, either voluntarily or by operation of law, without the written consent of the customer.”

ROLES AND RESPONSIBILITIES:

The Safeware team: Mount and install all security hardware at camera (pole location), create a wireless infrastructure from Edge to FUSION CENTER on the 4th Floor PD Building for recording. Load all software and licenses for IP cameras and ALPR equipment to be viewed on client workstation displays on monitors located at PD FUSION CENTER provide and install the video server required to provide 30 days of recording, 24/7, at 20FPS. NOTE: New locations (establishments) have been secured by PD for camera mounting and installation. It will be the Cities responsibility to provide 110V constant power to the camera location.

HPD IT: Provide all major switch gear from fiber junction points identified on the Wireless Design into FUSION CENTER PD. Build out new FUSION CENTER along with all hardware needed. 110V constant AC power at the Pole locations or wireless antenna locations. Roof top access needs to be provided for any buildings or structures for radio aggregation points.

Poles:

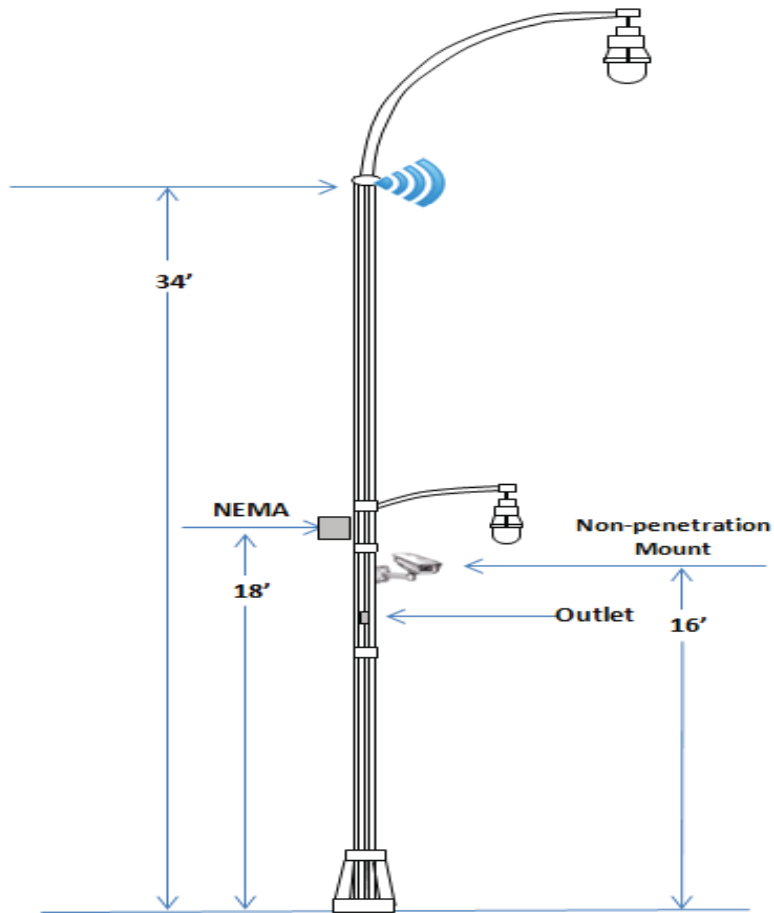
City owned Poles along Federal Highway currently have one 110V outlets installed on all the pole at an acceptable height which will be used for the deployment. Downtown decorative poles and Young Circle Poles will need to be retrofitted to receive power at the Poles by a city electrician. (Locations are identified on the overall map and further identified on the individual site diagrams).



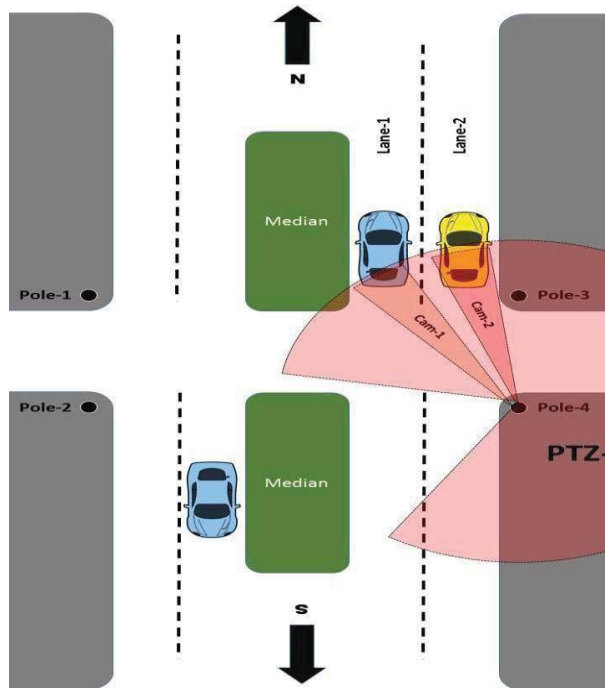
HPD IT: will be responsible for ensuring the outlet has power 24/7 for the deployment. The outlets appear to have been installed to support lighted holiday decorations, and are on the same photocell or timer as the Ave lights. The introduction of CCTV cameras on these poles may dictate that installation of these types of decoration be discontinued on poles with CCTV cameras, as they may affect the FOV, and camera iris. The same is required in Downtown, while in North Beach the City will be responsible for providing all poles, if needed, from the Public Works Department. Poles at North Beach will be installed by the City Electrician. Power must be present at all pole locations, and will need to be constant for the ALPR, Surveillance equipment, and Wireless communication radios to function. The Vendor will coordinate with City Electrician to ensure that local power is in place at the pole before mounting devices. **NOTE:** The City light poles also have banner rods installed on them, the banners will not necessarily obstruct the cameras FOV however and may cause the poles to sway during windy days thus affecting the camera views and wireless links.

The Safeware Team: Will be responsible for installing Stainless Steel key Lockable NEMA box eighteen (18) feet Above Ground Level (AGL), above the top banner pole, below the first light arm. The box will be installed in accordance with the City of Hollywood’s building department guidelines, and industry standards and best practices.

EQUIPMENT MOUNTING HEIGHTS:



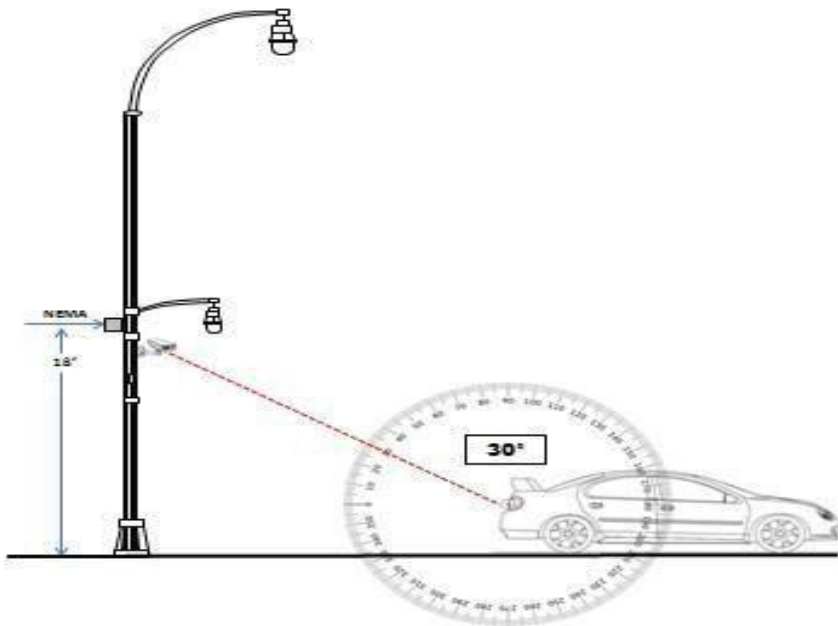
CONFIGURATION WITH ALPR AND PTZ AT POLE COVERING TWO TRAFFIC LANES



CAPTURE ANGLES FOR ALPR EQUIPMENT

City of Hollywood PD
City Wide Fixed LPR

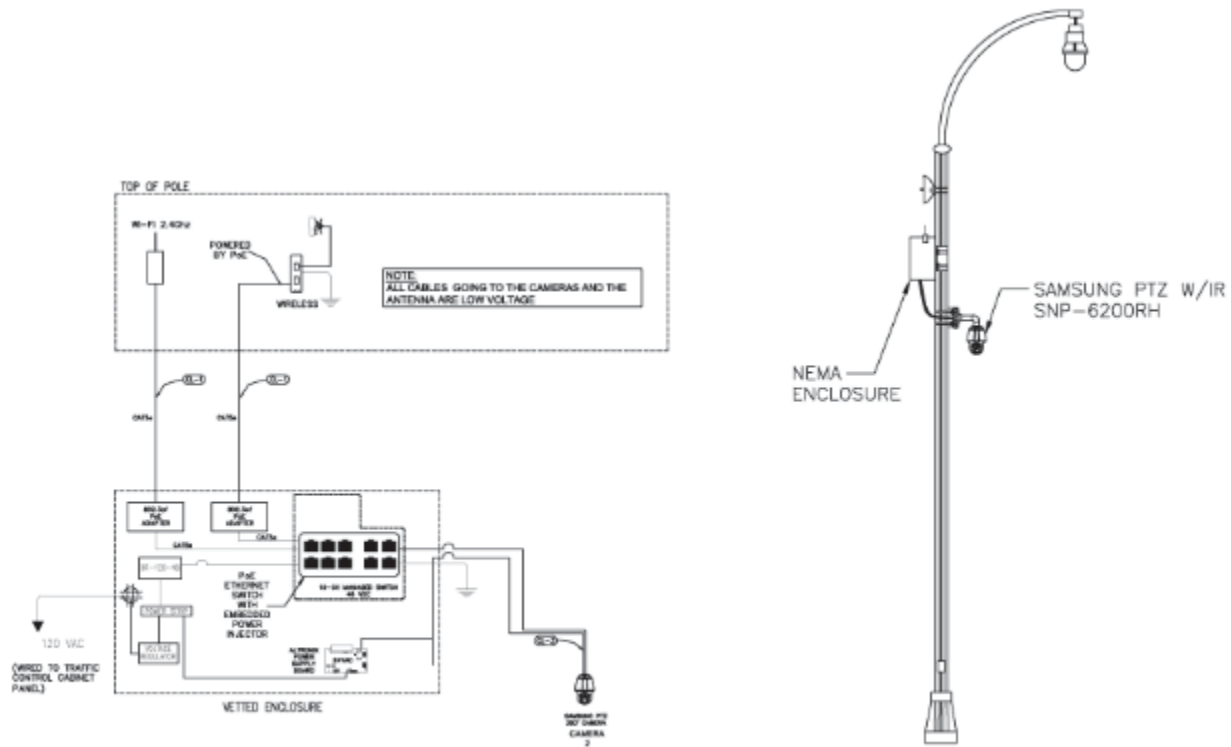
Standard City controlled light pole



For Representation only

Phase 1 NORTH BEACH OVERVIEW:

The system at North Beach includes the installation and operation of: (9) Samsung PTZ cameras, model SNP- 6200RH day/ night vandal resistant cameras, all pole mounting hardware and mounting brackets, power supplies, and Nema enclosures. In addition, (4) four Vigilant Car Detector fixed LPR cameras and all required components. The Safeware team will provide training and certification of the system. The Surveillance cameras and LPR cameras will be installed on the new Video Management Solution by ONSSI. The North Beach phase will also transmit video and data using a wireless solution engineered and designed by the Safeware Team. All cameras to be used are as specified in the bill of materials and drawings provided. Mounting hardware will meet or exceed South Florida building code and all strapping hardware will be Stainless Steel. This area will be fed from the Sheridan St Water tower using point to point radios to obtain connectivity at the beach and then point to multi-point at the beach to cover the multiple locations sited.



SOLUTION

The Safeware Team shall provide a complete surveillance/ ALPR solution across North Beach Parking zones as detailed on the walkthroughs and shown on the plans provided. The system shall consist of adding surveillance CCTV cameras and ALPR equipment to strategic City owned poles. The Safeware Team will work with City Electrician to point out exact location where constant power is needed. The Safeware Team will utilize existing poles at a strategic location to be designated for the wireless aggregation point.

Special Note for North Beach Poles: Installation of new poles have been removed with the assumption that the parking lot can be covered to the City's satisfaction with existing pole mounting options. Please note foliage (Sea Grapes) are an RF inhibitor. It is the cities responsibility to monitor and manage growth.

EQUIPMENT

1. CCTV SYSTEM

9 Poles broken out with the following equipment:

- **(9) Samsung 6200RH** Pan Tilt Zoom cameras with adaptive IR illumination Technology. Each surveillance camera will receive its respective license and Support for the Video Management recording system ONSSI.

Phase 1 Northbeach Overview



- Full HD(1080p) image 30fps streaming.
- Built-in 20x (4.45~89mm) optical zoom lens
- Min. Illumination 0Lux (IR distance 100m)
- H.264/MJPEG dual codec
- 360° Endless Pan, Tilt/ Zoom
- WDR, UPnP supports
- IP66, IK10 Grade
- Video privacy management supports

Each of the **(9) Pole** location will receive the following

- **(1) NEMA** Enclosure with termination equipment for Active communication to ruggedized recorder within NEMA enclosure.



- **(1) Ruggedized** 10 Port High Temperature rated Switch by Antaira Model LNP-1002-GN including the GBIC module for communication via wireless Backhaul.



- 5.6 Gbps Back-Plane (Switching Fabric)
- Supports Port Based VLAN and IEEE802.1Q Tag VLAN
- IEEE802.1p Class of Service Support
- Quality of Service Supports Port Based, Tag Based, and IPv4 Type of Service
- Xtreme Ring Redundancy Function (<20 ms Recovery Time)
- Supports Rapid Spanning Tree/Spanning Tree
- Supports IGMP v1 and Query Mode. Up to 256 Groups.
- SNMP, Web Management, RMON
- System Event Log
- Management IP Security
- Power Redundancy

The surveillance system will communicate using a wireless infrastructure which has been designed by The Safeware Team engineering staff. The use of a licensed link to the water tower will ensure high bandwidth from that location to any location on the beachfront. The use of point-to-point unlicensed radios to distribute the network from the water tower to the beach will ensure higher bandwidth than other systems and mitigate interference. Once the network is at the beach, lower propagation point to multi-point radios are used as the interference to throughput levels are acceptable. The system will record at FUSION CENTER on new servers by the Safeware Team and switches provided by the City to be able to sustain 30 days of storage at 20FPS, 24/7. Bandwidth and storage requirements for the system have been provided for each individual site to reflect the solution requirements. The system will then be transmitted back to the newly developed FUSION CENTER and broken out on to client workstations and monitors also provided by the City.

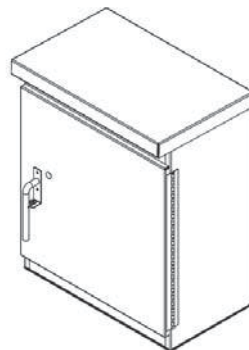
2. ALPR SYSTEM

ALPR solution to be mounted on the entry/ exit point of North Beach between Sheridan and Dania on Beach Blvd, in order to follow vehicles entering/ exiting the area using AIA as shown on plans.

(4) ALPR Vigilant Raptor 3 cameras will be mounted on four City owned poles with power to cover North and South bound traffic lanes on AIA. All cameras will be at the ideal heights per manufacturer specification, using power from the poles. It is noted that power at these four ALPR locations must be constant. This ALPR system will transmit information using wireless transmission. **Total ALPR equipment = 4**



- **(4) ALPR NEMA ENCLOSURES**

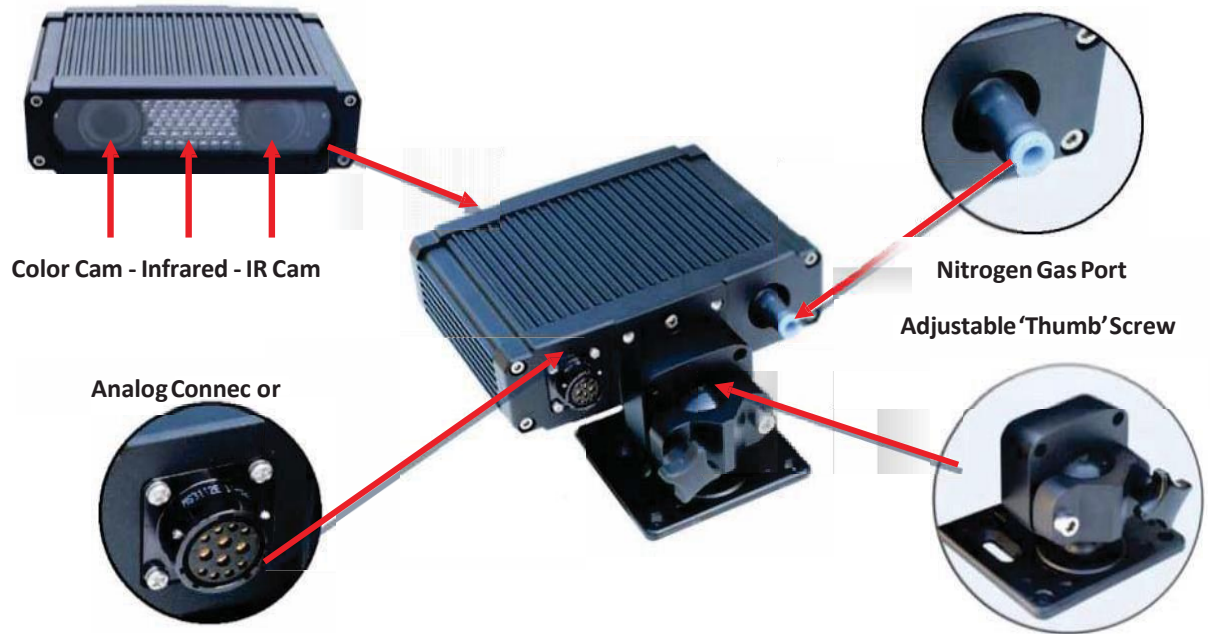


- Hardened Weatherproof Aluminum Enclosure with internal vented thermostat controlled fans
- Cellular or Line of Sight Radio Connectivity Options
- Real Time Hit Alerts via
- Vigilant’s TAS Client
- Made in USA construction

Phase 1 Northbeach Overview

Vigilant Fixed LPR Image Capture Technology

Vigilant's Fixed LPR Image Capture Technology includes a ruggedized camera and digital signal processing (DSP) unit using analog inputs, for non-proprietary video-feed. The camera is Nitrogen purged to protect internal components from outside atmospheric conditions and prevent condensation inside the camera housing. The camera also includes infrared (IR) light emitting diodes (LED's) for plate illumination thereby eliminating the need for external illumination, as well as a dual-lens camera (IR and color) for both plate and vehicle overview imaging.



With successful LPR camera deployments throughout the United States, Canada and Mexico, Vigilant's camera is ruggedized to meet the variety of climates and environmental conditions seen along the northern and southern borders. Vigilant's LPR cameras are made available with the following operating specifications:

Capture speed maximum	120mph (190kph)
Dimensions	6.9" (W) x 5.2" (L) x 2" (H)
Mounting – Mobile or Fixed	3-axis (Aim Precision) / Lock in place - Low profile / Solid mount
Color	Black Anodized
Weight	2.8 lbs
Watertight	Designed to be IP67 / NEMA4 compliant
Operational temperature	-40°C to 60°C -40°F to 140°F
Power consumption	Less than 3.7 W nominal; 6W MAX
Input voltage	6V-16V DC

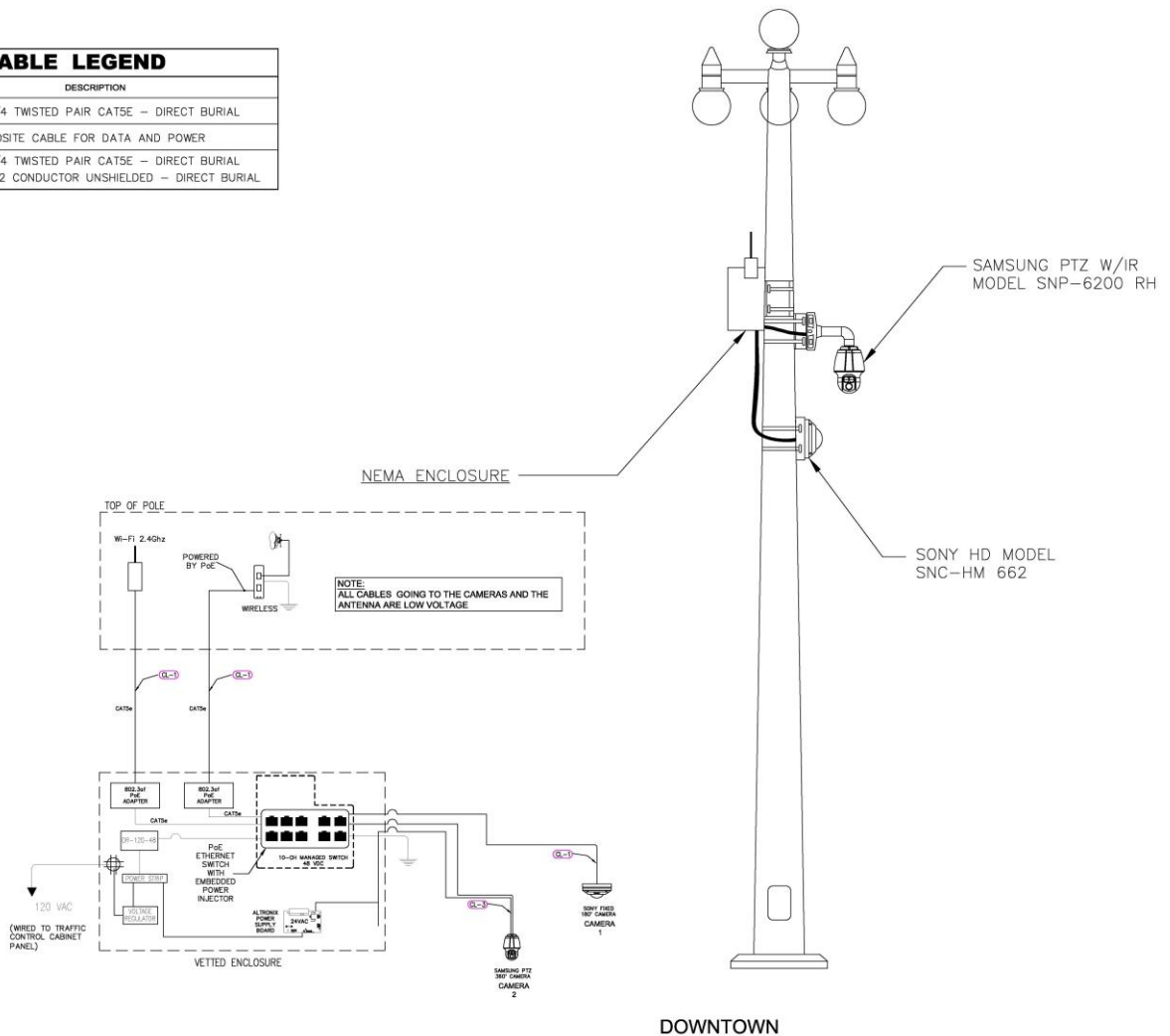
Phase 2 Downtown Overview

The solution includes the installation of: (4) four Samsung PTZ cameras, model SNP-6200RH and (4) four Sony SNC- HM662 360/180 HD day/night vandal resistant cameras for the Downtown Area. The Safeware Team provide and install all cameras including pole mounting hardware, brackets, power supplies, and

Phase 2 Downtown Overview

enclosures at strategic locations chosen by the Police department. The locations can be found on the site map and plans provided. All cameras to be used are as specified in the bill of materials and drawings provided. Mounting hardware will meet or exceed South Florida building code and all strapping hardware will be Stainless Steel. The wireless system will be fed from the Radius building to Young circle and Van Buren Parking to allow distribution to camera locations on 19th and 20th which will in turn feed via point to point radios to 21st Ave.

CABLE LEGEND	
KEY	DESCRIPTION
CL-1	1-22/4 TWISTED PAIR CAT5E - DIRECT BURIAL
CL-2	COMPOSITE CABLE FOR DATA AND POWER
CL-3	1-22/4 TWISTED PAIR CAT5E - DIRECT BURIAL 1-18/2 CONDUCTOR UNSHIELDED - DIRECT BURIAL



SOLUTION

The Safeware Team shall provide a complete surveillance solution the Downtown area as detailed on the walkthroughs and shown on the plans provided. The system shall consist of adding surveillance CCTV cameras to strategic City owned poles, where power is constant. The system will have (1) Pan-tilt zoom and (1) 5 megapixel 180 degree camera at each pole location on the following intersections:

Hollywood Blvd./ 20th Ave-
Hollywood Blvd./ 21st Ave –
Harrison / 19th Ave –
Harrison / 20th Ave

CCTV SYSTEM

(4) Poles broken out with the following equipment:

- **(4) Samsung 6200RH** Pan-Tilt Zoom cameras with adaptive IR illumination Technology. Each surveillance camera will receive its respective license and Support for the Video Management recording system ONSSI.



- Full HD (1080p) image 30fps streaming.
- Built-in 20x (4.45~89mm) optical zoom lens
- Min. Illumination 0Lux (IR distance 100m)
- H.264/MJPEG dual codec
- 360° Endless Pan, Tilt/ Zoom
- WDR, UPnP supports
- IP66, IK10 Grade
- Video privacy management supports

- **(4) Sony 360/180 degree cameras.** Each surveillance camera will receive its respective license and Support for the Video Management recording system ONSSI.



- High resolution 5 megapixel images with 360-degree hemispheric view
- Advanced de-warping technology for immersive monitoring
- Day or night

Phase 2 Downtown Overview

- Automatic edge recording to memory card
- IK10-rated anti-vandal resistance
- IP66-rated water-resistant and dust-tight
- Wide operating temperature range
- Built-in microphone and audio output
- Multiple video and audio codecs
- ONVIF (Open Network Video Interface Forum) compliance

Each of the (4) Pole location will receive the following

- **(1) NEMA** Enclosure with termination equipment for Active communication to ruggedized recorder within NEMA enclosure.



- **(1) Ruggedized** 10 Port High Temperature rated Switch by Antaira Model LNP-1002-GN including the GBIC module for communication via wireless Backhaul.



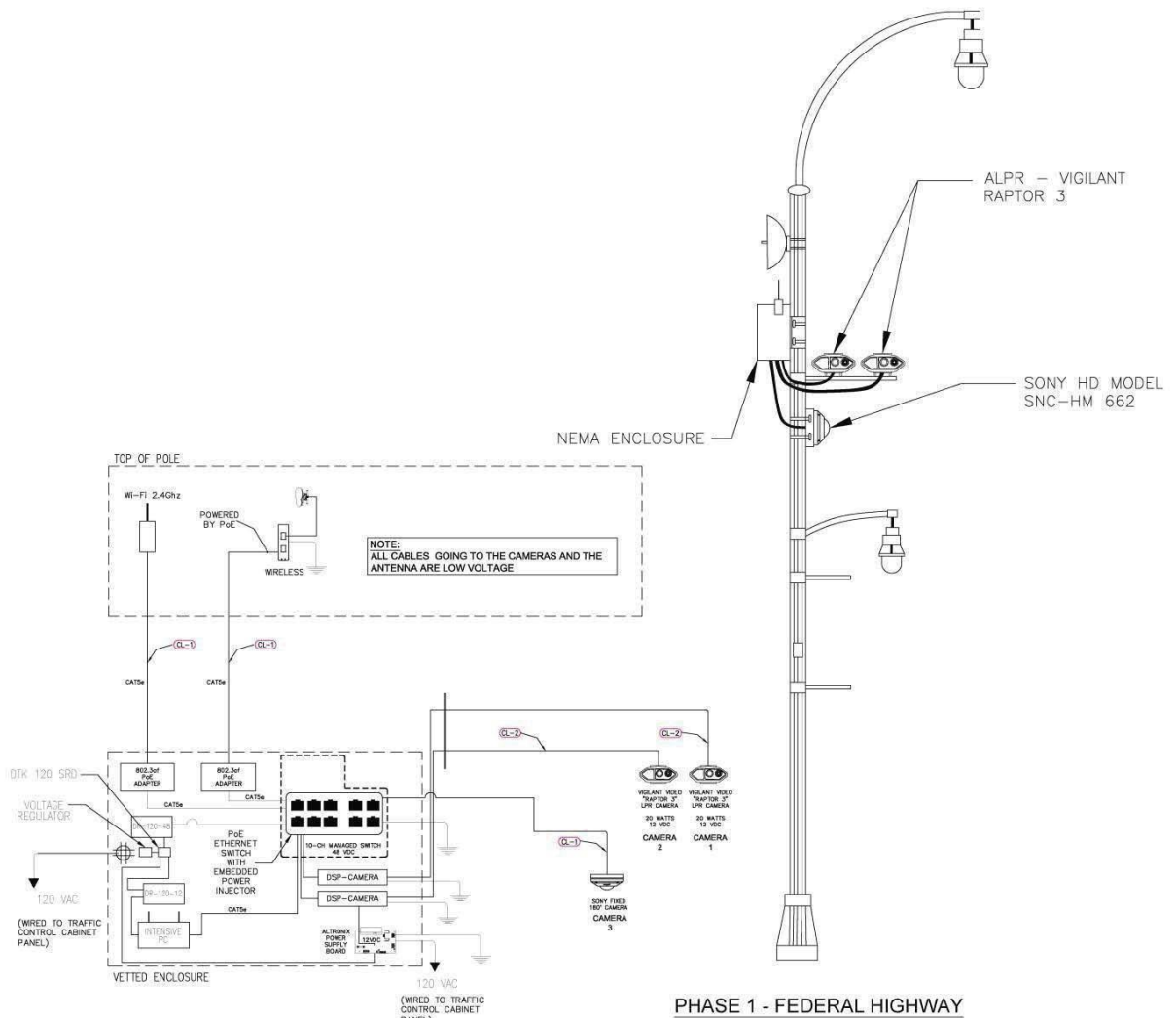
- 5.6 Gbps Back-Plane (Switching Fabric)
- Supports Port Based VLAN and IEEE802.1Q Tag VLAN
- IEEE802.1p Class of Service Support
- Quality of Service Supports Port Based, Tag Based, and IPv4 Type of Service
- Xtreme Ring Redundancy Function (<20 ms Recovery Time)
- Supports Rapid Spanning Tree/Spanning Tree
- Supports IGMP v1 and Query Mode. Up to 256 Groups.
- SNMP, Web Management, RMON
- System Event Log

Phase 2 Downtown Overview

- Management IP Security
- Power Redundancy

The surveillance system will communicate using a wireless infrastructure which has been designed by The Safeware Team engineering staff. This design follows the methodology in the prior phases and will allow expansion if required. The system will record at FUSION CENTER on new servers provided by the Safeware Team and switches provided by the City to be able to sustain 30 days of storage at 20FPS, 24/7. Bandwidth and storage requirements for the system have been provided for each individual site to reflect the solution requirements. The system will then be transmitted to the newly developed FUSION CENTER and broken out onto client workstations and monitors also provided by the city.

FEDERAL HIGHWAY POLE CONFIGURATION



PHASE 1 - FEDERAL HIGHWAY

OVERVIEW:

The system at Federal Highway will include: The installation of fifteen (15) Surveillance cameras by Samsung, model SNP-6200RH day/night vandal resistant cameras with IR illuminators, and (5) five Sony 180 degree cameras model SNC-HM662, five Megapixel, day/night, vandal resistant, with Digital zoom. THE SAFEWARE TEAM shall include all pole mounting hardware, brackets, power supplies, and NEMA enclosure to complete installation. Automatic License plate recognition cameras will also be installed as part of this phase. The Safeware Team will provide sixteen (16) Vigilant Car Detector ALPRs for this phase. The Safeware Team will provide the wireless infrastructure for the transmission of video and data back to the new PD FUSION CENTER for evidence collection and active alerting. All systems recording will be done at FUSION CENTER on a new Storage server provided by Safeware located on a secured IDF room chosen by IT (workstations to be provided by City). All poles are existing or will be provided and installed by the City of Hollywood with the required power at the pole. This section will be covered with unlicensed point to point radios to distribute the network to the Radius building. From the Radius building, a combination of point to point and point to multi-point Cerragon radios will be used to backhaul each location.

SOLUTION:

The Safeware Team is providing a complete surveillance and ALPR solution across Federal highway as detailed on the walkthroughs and shown on the plans provided.

EQUIPMENT

1. CCTV SYSTEM

(20) Poles broken out with the following equipment:

- **(15) Samsung 6200RH** Pan Tilt Zoom cameras with adaptive IR illumination Technology. Each surveillance camera will receive its respective license and Support for the Video Management recording system ONSSI.



- Full HD(1080p) image 30fps streaming.
- Built-in 20x (4.45~89mm) optical zoom lens
- Min. Illumination 0Lux (IR distance 100m)
- H.264/MJPEG dual codec
- 360° Endless Pan, Tilt/ Zoom
- WDR, UPnP supports
- IP66, IK10 Grade
- Video privacy management supports

- **(5) Sony 360/180 degree cameras.** Each surveillance camera will receive its respective license and Support for the Video Management recording system ONSSI.



- High resolution 5 megapixel images with 360-degree hemispheric view
- Advanced de-warping technology for immersive monitoring
- Day or night
- Automatic edge recording to memory card
- IK10-rated anti-vandal resistance
- IP66-rated water-resistant and dust-tight
- Wide operating temperature range
- Built-in microphone and audio output
- Multiple video and audio codecs
- ONVIF (Open Network Video Interface Forum) compliance

Each of the **(20) Poles** location will receive the following:

- **(1) NEMA Enclosure** with termination equipment for Active communication to ruggedized recorder within NEMA enclosure.



- **(1) Ruggedized 10 Port High Temperature rated Switch** by Antaira Model LNP-1002-GN including the GBIC module for communication via wireless Backhaul.



- 5.6 Gbps Back-Plane (Switching Fabric)
- Supports Port Based VLAN and IEEE802.1Q Tag VLAN
- IEEE802.1p Class of Service Support
- Quality of Service Supports Port Based, Tag Based, and Ipv4 Type of Service
- Xtreme Ring Redundancy Function (<20 ms Recovery Time)
- Supports Rapid Spanning Tree/Spanning Tree
- Supports IGMP v1 and Query Mode. Up to 256 Groups.
- SNMP, Web Management, RMON
- System Event Log
- Management IP Security
- Power Redundancy

The surveillance system will communicate using a wireless infrastructure which has been designed by The Safeware Team engineering staff. The design includes a combination of long haul and short haul radios and will tie in to Hollywood's existing network at FUSION CENTER from pre-determined aggregation points. A "site survey" has been conducted to determine the frequency's utilized for the deployment to create a stable transmission environment, and at time of deployment a reconfirming site survey will be performed. The system will record at FUSION CENTER on new servers provided by the Safeware Team and switches provided by the City to be able to sustain 30 days of storage at 20FPS, 24/7. Bandwidth and storage requirements for the system have been provided for each individual site to reflect the solution requirements . The system will then be transmitted back to the newly developed FUSION CENTER and broken out on to client workstations and monitors also

provided by the City. The Links will be 350mbps symmetrical to allow full expansion and growth exceeding the requirements for camera use.

2. ALPR SYSTEM

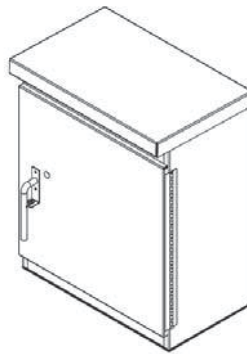
ALPR solution to be mounted on the entry/ exit points of strategic intersections, in order to follow vehicles entering the City limits through designated locations. The plans denote the individual locations.

The plans denote the individual locations as follows below:

1. Federal Highway and Pembroke Road South bound lanes and North bound lanes will be covered using two South bound (2) and two North bound (2) Vigilant Raptor 3 ALPR cameras. All cameras will be mounted using existing City owned poles at the ideal heights per manufacturer specification using power from the poles. Power is to be constant 24/7 provided by the City.
Total ALPR equipment = 4
2. Young Circle will be covered at strategic locations on the 4 corners of the entry/exit into the circle using eight (8) Vigilant Raptor 3 ALPR cameras broken out to two Vigilant Raptor 3 ALPR cameras at each pole location (four poles). All cameras will be mounted using existing City owned poles at the ideal heights per manufacturer specification using power from the poles. Power is to be constant 24/7 provided by the City. **Total ALPR equipment = 8**
3. Federal Highway and Sheridan South and North bound lanes will be covered using two South bound (2) and two North bound (2) totaling four (4) Vigilant Raptor 3 ALPR cameras. All cameras will be mounted using existing City owned poles at the ideal heights per manufacturer specification using power from the poles. Power is to be constant 24/7 provided by the City. **Total ALPR equipment = 4**



- (15) ALRP NEMA ENCLOSURES



- Hardened Weatherproof Aluminum Enclosure with internal vented thermostat controlled fans
- Cellular or Line of Sight Radio Connectivity Options
- Real Time Hit Alerts via
- Vigilant's TAS Client
- Made in USA construction

Features - License Plate Query

LEARN allows the user to leverage Vigilant's LPR data in a number of ways, including advanced vehicle location query capabilities. Whether using a known license plate number, full or partial, date/time, and/or a geographical location as input criteria, the user-friendly interface simply and quickly conducts historical and real time queries against the search parameters. Filters can be applied to include or exclude variables such as the source of the LPR data, systems, users, and more. Search criteria may also be saved for later review against incoming (refreshed) data to further enhance the success of any investigation.



License Plate Query Search Page – Basic Search

Geo-zoning allows the user to actively search an area of interest with or without a license plate number. A simple map interface allows the user to draw polygonal shapes to define a region of interest. These user-created geo-zones may be saved for quick reference in a library of target geographical zones, therefore eliminating repetitive re-creation of target maps.



License Plate Query – Sample Geographic Search

Query results include a color overview image of the vehicle, a picture of the license plate, the system’s interpretation of the license plate, date and time of the scan, latitude and longitude, as well as the user and system that created the scan. The system also provides a feature that resolves the geographic coordinates to a nearest physical address and nearest intersection which is helpful for situations requiring immediate dispatch.



License Plate Query - Search Results

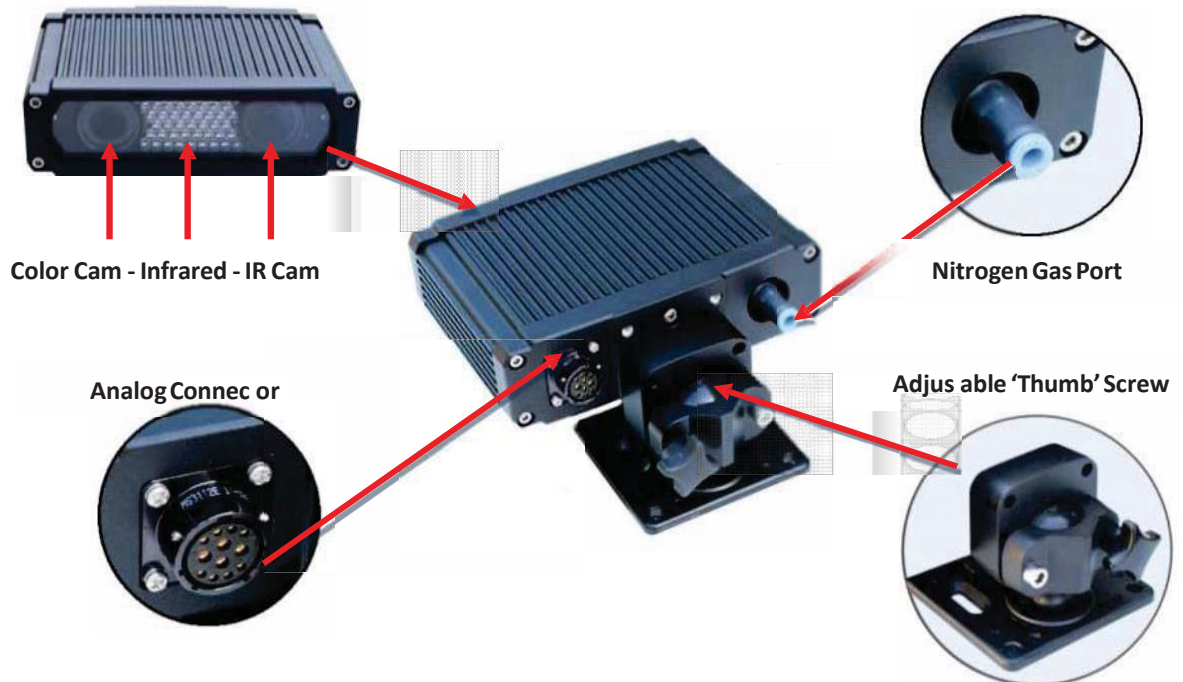
A filmstrip appears at the top of the return page, allowing the user to scroll through the list of color overview photos, and hovering on a photo produces a large image for more thorough inspection of the photograph. Individual or multiple license plate scans may be viewed for further analysis, exported to a PDF or Excel document for inclusion in a case file, or plotted on a map for location and clustering analysis.



Vehicle Detection Report in PDF Format

Vigilant Fixed LPR Image Capture Technology

Vigilant's Fixed LPR Image Capture Technology includes a ruggedized camera and digital signal processing (DSP) unit using analog inputs, for non-proprietary video-feed. The camera is Nitrogen purged to protect internal components from outside atmospheric conditions and prevent condensation inside the camera housing. The camera also includes infrared (IR) light emitting diodes (LED's) for plate illumination thereby eliminating the need for external illumination, as well as a dual-lens camera (IR and color) for both plate and vehicle overview imaging.



With successful LPR camera deployments throughout the United States, Canada and Mexico, Vigilant's camera is ruggedized to meet the variety of climates and environmental conditions seen along the northern and southern borders. Vigilant's LPR cameras are made available with the following operating specifications:

Phase 3 Federal Hwy Overview

Capture speed maximum	120mph (190kph)
Dimensions	6.9" (W) x 5.2" (L) x 2" (H)
Mounting – Mobile or Fixed	3-axis (Aim Precision) / Lock in place - Low profile / Solid mount
Color	Black Anodized
Weight	2.8 lbs
Watertight	Designed to be IP67 / NEMA4 compliant
Operational temperature	-40°C to 60°C -40°F to 140°F
Power consumption	Less than 3.7 W nominal; 6W MAX
Input voltage	6V-16V DC

PHASE - 0

Remove map.



QUOTATION

Phase 0, Permits - CCTV & LPR (ATCi #1)

5641 S Laburnum Ave
 Richmond VA 23231
 www.safewareinc.com

Name: City of Hollywood

Attn: _____

Phone: _____

Fax: _____

Email: _____

Cust ID: _____

Freight Terms: USC PPD

Date: 1.13.15

Expiration Date: _____ Valid till Feb 28th

Prepared By: Peter Van Kirk

Phone: 561-400-1029

Fax: 804-236-0429

Email: pvankirk@safewareinc.com

Sales Rep: Peter Van Kirk

Customer Project: _____

Payment Terms: Per US Communities Contract

LINE	DESCRIPTION
1	COMPLETE PROJECT PERMIT FEES
2	DRAWINGS AND ENGINEERING

QTY	DESCRIPTION	UNIT PRICE	EXTENDED PRICE	SAFWARE LIST PRICE	USC DISCOUNT	YOUR DISCOUNT
1	Internal Permit preparation requiring; third party engineering(signed and sealed plans), Wireless survey, FCC submission and approvals, internal shop drawings, blueprint preparation, outside expeditors for submission and approvals <i>(The City of Hollywood permit fee of \$36,354 will be paid internally within the city.)</i>	\$ 20,399.72	\$20,399.72	\$61,057.33	41%	67%
	TOTAL	\$ 20,399.72	\$20,399.72	\$61,057.33	41%	67%

Special Notes: US Communities Contract Information - Contract number: 4400001839
 Standard freight charges for shipments within the continental US are paid. Any Hazardous material charges or expedited freight will be billed.
 *Agency must be registered with US Communities at www.uscommunities.org

Authorized Signature: *Peter Van Kirk*



QUOTATION

5641 S Laburnum Ave

Phase 0, Federal Highway PD/FUSION CENTER-SERVER UPGRADES (ATCi #2)

Richmond VA 23231
www.safewareinc.com

Name: City of Hollywood
 Attn: _____
 Phone: _____
 Fax: _____
 Email: _____
 Cust ID: _____
 Freight Terms: USC PPD

Date: 1.13.15
 Expiration Date: _____ Valid till Feb 28th
 Prepared By: Peter Van Kirk
 Phone: 561-400-1029
 Fax: 804-236-0429
 Email: pvankirk@safewareinc.com
 Sales Rep: Peter Van Kirk
 Customer Project: Server Upgrades CCTV and ALPR
 Payment Terms: Per US Communities Contract

LINE	QTY	DESCRIPTION	UNIT PRICE	EXTENDED PRICE	SAFWARE LIST PRICE	USC DISCOUNT	YOUR DISCOUNT
		V46W8CS26R16R24DLA60TB - Server upgrades for City of Hollywood from V36 series. Additional storage upgrade for City Surveillance expansion from 40TB to 60TB per unit. HDD upgrades to SAS drives, RAID 6 configuration upgrade from RAID 5 controller.	\$ 8,715.91	\$ 17,431.82	\$ 18,365.24	41%	53%
PROPOSAL TOTAL				\$ 17,431.82			

* This proposal must be simultaneously approved with the City wide project prior to procurement of servers.
 ** This is an add on quote for the City Wide ALPR and CCTV servers
 Additional ONSSI licenses will be required per IP channel using encoders. The license cost for ea Base video channel is \$325.40

Special Notes: US Communities Contract Information - Contract number: 4400001839
 Standard freight charges for shipments within the continental US are paid. Any Hazardous material charges or expedited freight will be billed.
 *Agency must be registered with US Communities at www.uscommunities.org

Authorized Signature: *Peter Van Kirk*



QUOTATION

**Phase 0, Federal Highway PD/FUSION CENTER
(servers/ licenses - CCTV & LPR (ATCi #3))**

5641 S Laburnum Ave
Richmond VA 23231
www.safewareinc.com

Name: City of Hollywood
 Attn: _____
 Phone: _____
 Fax: _____
 Email: _____
 Cust ID: _____
 Freight Terms: USC PPD

Date: 1.13.15
 Expiration Date: _____ Valid till Feb 28th
 Prepared By: Peter Van Kirk
 Phone: 561-400-1029
 Fax: 804-236-0429
 Email: pvan Kirk@safewareinc.com
 Sales Rep: Peter Van Kirk
 Customer Project: _____
 Payment Terms: Per US Communities Contract

LINE	DESCRIPTION
1	Base License for onssi the Base Server includes 2 year base SUP SUP-OC-CS-2Y/OC-CS
2	OnSSI SUP Part Number for 1 I Video Channel. Manufacturer service and support per channel for 1 year
3	1 ONSSI Channel of Net Video. One is needed per channel of video added to the server (one time fee per channel)
4	Video Wall Application - OC-VWM-B ONSSI inclusive of 2 Year SUP
5	Video Wall license per OC-VWM-IC ONSSI with 2 year SUP SUP-OC-VWM-IC-2Y
6	ONSSI Vigilant per camera integration and server application C2P
7	(2) V36W8CS26R16R16DLA40TB_OC VVSS Video Appliance Quotation with ONSSI/Vigilant middleware
8	24 Port sPatch Panel Cat6
9	24 port LIU
10	KVM W/17" LCD MONITOR
11	JOYSTICK AXIS T8311
12	MISCELLANEOUS hardware and HD cabling requirements
13	CABLE PULL
14	COMPLETE PROJECT PERMIT FEES
15	AS BUILTS DRAWINGS AND ENGINEERING

QTY	DESCRIPTION	UNIT PRICE	EXTENDED PRICE	SAFWARE LIST PRICE	USC DISCOUNT	YOUR DISCOUNT
	City Hall to PD (Servers/Licenses)					
1	Two System Servers, ONSSI Enterprise Licenses	\$54,656.36	\$54,656.36	\$116,043.23	41%	53%
1	ONSSI Virtual Matrix	\$18,473.07	\$18,473.07	\$46,141.37	41%	60%
1	Installation, Programming, Asbuilt Drawings, Engineering	\$23,230.68	\$23,230.68	\$49,217.54	41%	53%
	TOTAL	\$96,360.11	\$96,360.11	\$211,402.14	41%	54%

Special Notes: US Communities Contract Information - Contract number: 4400001839
 Standard freight charges for shipments within the continental US are paid. Any Hazardous material charges or expedited freight will be billed.
 *Agency must be registered with US Communities at www.uscommunities.org

Authorized Signature: Peter Van Kirk



Phase 0-Engineering & Design-Wireless (ACC #1)

QUOTATION

5641 S Laburnum Ave
Richmond VA 23231
www.safewareinc.com

Name:	City of Hollywood
Attn:	
Phone:	
Fax:	
Email:	
Cust ID:	
Freight Terms:	USC PPD

Date:	1.13.15
Expiration Date:	Valid till Feb 28th
Prepared By:	Peter Van Kirk
Phone:	561-400-1029
Fax:	804-236-0429
Email:	pvankirk@safewareinc.com
Sales Rep:	Peter Van Kirk
Customer RFQ:	City of Hollywood
Payment Terms:	per US Communities contract

EQUIPMENT

LINE	QTY	DESCRIPTION	UNIT PRICE	EXTENDED PRICE	SAFEWARE LIST PRICE	USC DISCOUNT	YOUR DISCOUNT
1	208	Gathering, Networking Engineering	\$ 206.53	\$ 42,959.09	\$ 887.52	41%	77%
PROPOSAL TOTAL			\$ 206.53	\$ 42,959.09			

Special Notes: US Communities Contract Information - Contract number: 4400001839
Standard freight charges for shipments within the continental US are paid. Any Hazardous material charges or expedited freight will be billed.
*Agency must be registered with US Communities at www.uscommunities.org

Authorized Signature: *Peter Van Kirk*



QUOTATION

Phase 0-PD to Radius-Wireless (ACC #2)

5641 S Laburnum Ave
Richmond VA 23231
www.safewareinc.com

Name: City of Hollywood

Attn: _____

Phone: _____

Fax: _____

Email: _____

Cust ID: _____

Freight Terms: USC PPD

Date: 1.13.15

Expiration Date: _____ Valid till Feb 28th

Prepared By: Peter Van Kirk

Phone: 561-400-1029

Fax: 804-236-0429

Email: pvankirk@safewareinc.com

Sales Rep: Peter Van Kirk

Customer RFQ: City of Hollywood, Phase 0, Police Station to

Payment Terms: Per US Communities Contract

LINE	QTY	DESCRIPTION	UNIT PRICE	EXTENDED PRICE	SAFEWARE LIST PRICE	USC DISCOUNT	YOUR DISCOUNT
PHASE 0							
POLICE STATION TO RADIUS							
1	2	Licensed PTP	\$ 8,569.35	\$ 17,138.70	\$ 20,986.34	41%	59%
2	1	License processing	\$ 2,667.52	\$ 2,667.52	\$ 5,982.74	41%	55%
3	2	LCOM Enclosure	\$ 255.68	\$ 511.36	\$ 516.74	41%	51%
4	1	Cabling and Gear	\$ 704.55	\$ 704.55	\$ 1,534.70	41%	54%
5	1	Non Penetrating Skid	\$ 801.14	\$ 801.14	\$ 2,101.98	41%	62%
6	1	Garretcom 6kl 4p switch Managed w/fiber SFP	\$ 794.32	\$ 794.32	\$ 1,976.48	41%	60%
7	1	Crew Labor	\$ 6,818.18	\$ 6,818.18	\$ 20,987.12	41%	68%
8	10	Provisioning	\$ 92.05	\$ 920.45	\$ 348.25	41%	74%
9	10	Project Management	\$ 170.45	\$ 1,704.55	\$ 534.14	41%	68%
10	12	Construction Management	\$ 147.73	\$ 1,772.73	\$ 410.74	41%	64%
PROPOSAL TOTAL				\$ 33,833.50			

Special Notes: US Communities Contract Information - Contract number: 4400001839
Standard freight charges for shipments within the continental US are paid. Any Hazardous material charges or expedited freight will be billed.
*Agency must be registered with US Communities at www.uscommunities.org

Authorized Signature: *Peter Van Kirk*



QUOTATION

Phase 0- Water Tower to Police Dept.-Wireless (ACC #3)

5641 S Laburnum Ave
Richmond VA 23231
www.safewareinc.com

Name: City of Hollywood

Attn: _____

Phone: _____

Fax: _____

Email: _____

Cust ID: _____

Freight Terms: USC PPD

Date: 1.13.15

Expiration Date: _____ Valid till Feb 28th

Prepared By: Peter Van Kirk

Phone: 561-400-1029

Fax: 804-236-0429

Email: pvankirk@safewareinc.com

Sales Rep: Peter Van Kirk

Customer RFQ: City of Hollywood, Phase 0, Water Tower Backhaul to Police Station

Payment Terms: Per US Communities Contract

LINE	QTY	DESCRIPTION	UNIT PRICE	EXTENDED PRICE	SAFWARE LIST PRICE	USC DISCOUNT	YOUR DISCOUNT
PHASE 0							
WATER TOWER BACKHAUL TO POLICE STATION							
1	6	Unlicensed PTP 5.8	\$ 3,532.40	\$ 21,194.39	\$ 11,657.87	41%	70%
2	1	License processing	\$ 2,667.52	\$ 2,667.52	\$ 5,982.74	41%	55%
3	2	Licensed PTP	\$ 8,569.35	\$ 17,138.70	\$ 12,764.77	41%	33%
4	2	LCOM Enclosure	\$ 255.68	\$ 511.36	\$ 516.74	41%	51%
5	1	Cabling and gear	\$ 704.55	\$ 704.55	\$ 1,534.70	41%	54%
6	1	Garretcom 6kl 4p switch Managed w/ fiber SFP	\$ 794.32	\$ 794.32	\$ 1,976.48	41%	60%
7	1	Crew Labor	\$ 6,818.18	\$ 6,818.18	\$ 20,987.12	41%	68%
8	24	Provisioning	\$ 92.05	\$ 2,209.09	\$ 348.25	41%	74%
9	21	Project Management	\$ 170.45	\$ 3,579.55	\$ 534.14	41%	68%
10	33	Construction Management	\$ 147.73	\$ 4,875.00	\$ 410.74	41%	64%
PROPOSAL TOTAL				\$ 60,492.66			

Special Notes: US Communities Contract Information - Contract number: 4400001839
Standard freight charges for shipments within the continental US are paid. Any Hazardous material charges or expedited freight will be billed.
*Agency must be registered with US Communities at www.uscommunities.org

Authorized Signature: *Peter Van Kirk*



QUOTATION

Phase 0- Van Buren to Radius-Wireless (ACC #4)

5641 S Laburnum Ave
Richmond VA 23231
www.safewareinc.com

Name: City of Hollywood

Attn: _____

Phone: _____

Fax: _____

Email: _____

Cust ID: _____

Freight Terms: USC PPD

Date: 1.13.15

Expiration Date: _____ Valid till Feb 28th

Prepared By: Peter Van Kirk

Phone: 561-400-1029

Fax: 804-236-0429

Email: pvankirk@safewareinc.com

Sales Rep: Peter Van Kirk

Customer RFQ: City of Hollywood, Phase 0, Van Buren PTP

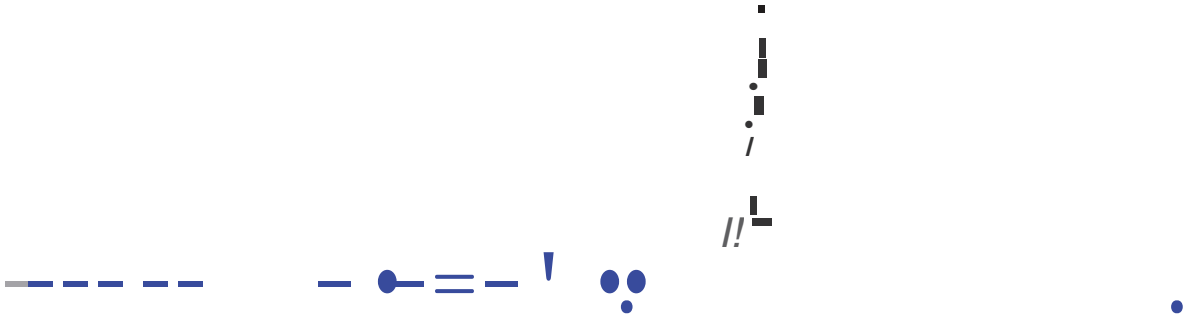
Payment Terms: Per US Communities Contract

LINE	QTY	DESCRIPTION	UNIT PRICE	EXTENDED PRICE	SAFEWARE LIST PRICE	USC DISCOUNT	YOUR DISCOUNT
PHASE 0							
VAN BUREN PTP AND BS							
1	1	Unlicensed PTP 5.8	\$ 3,532.40	\$ 3,532.40	\$ 11,657.87	41%	70%
2	1	Unlicensed PMP BS	\$ 4,594.81	\$ 4,594.81	\$ 10,998.45	41%	58%
3	2	LCOM Enclosure	\$ 255.68	\$ 511.36	\$ 516.74	41%	51%
4	1	Cabling and gear	\$ 704.55	\$ 704.55	\$ 1,534.70	41%	54%
5	1	Non Penetrating Skid	\$ 801.14	\$ 801.14	\$ 2,101.98	41%	62%
6	6	Crew Labor	\$ 681.82	\$ 4,090.91	\$ 1,499.30	41%	55%
7	8	Provisioning	\$ 92.05	\$ 736.36	\$ 348.25	41%	74%
8	10	Project Management	\$ 170.45	\$ 1,704.55	\$ 534.14	41%	68%
9	12	Construction Management	\$ 147.73	\$ 1,772.73	\$ 410.74	41%	64%
PROPOSAL TOTAL				\$	18,448.80		

Special Notes: US Communities Contract Information - Contract number: 4400001839
Standard freight charges for shipments within the continental US are paid. Any Hazardous material charges or expedited freight will be billed.
*Agency must be registered with US Communities at www.uscommunities.org

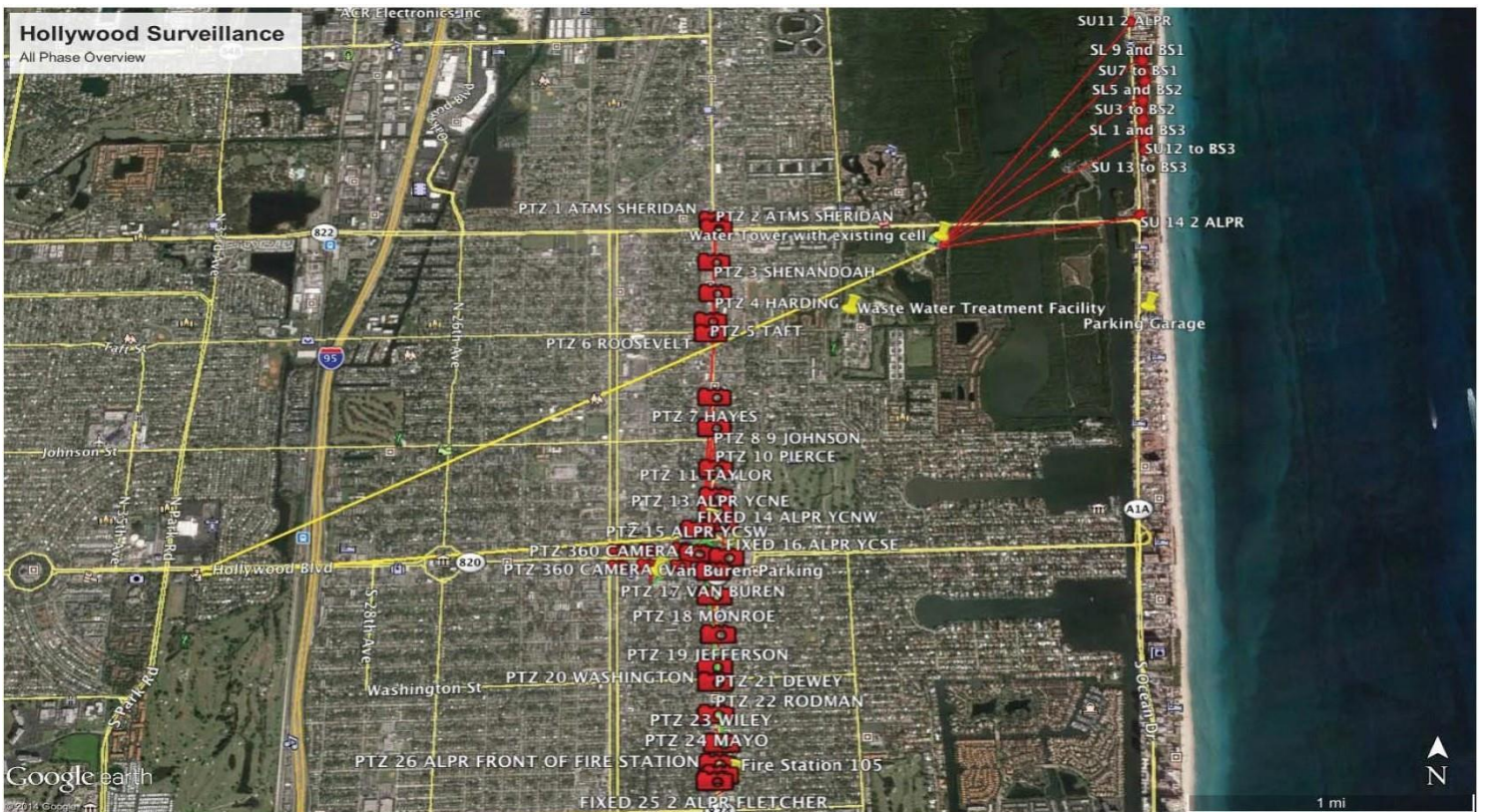
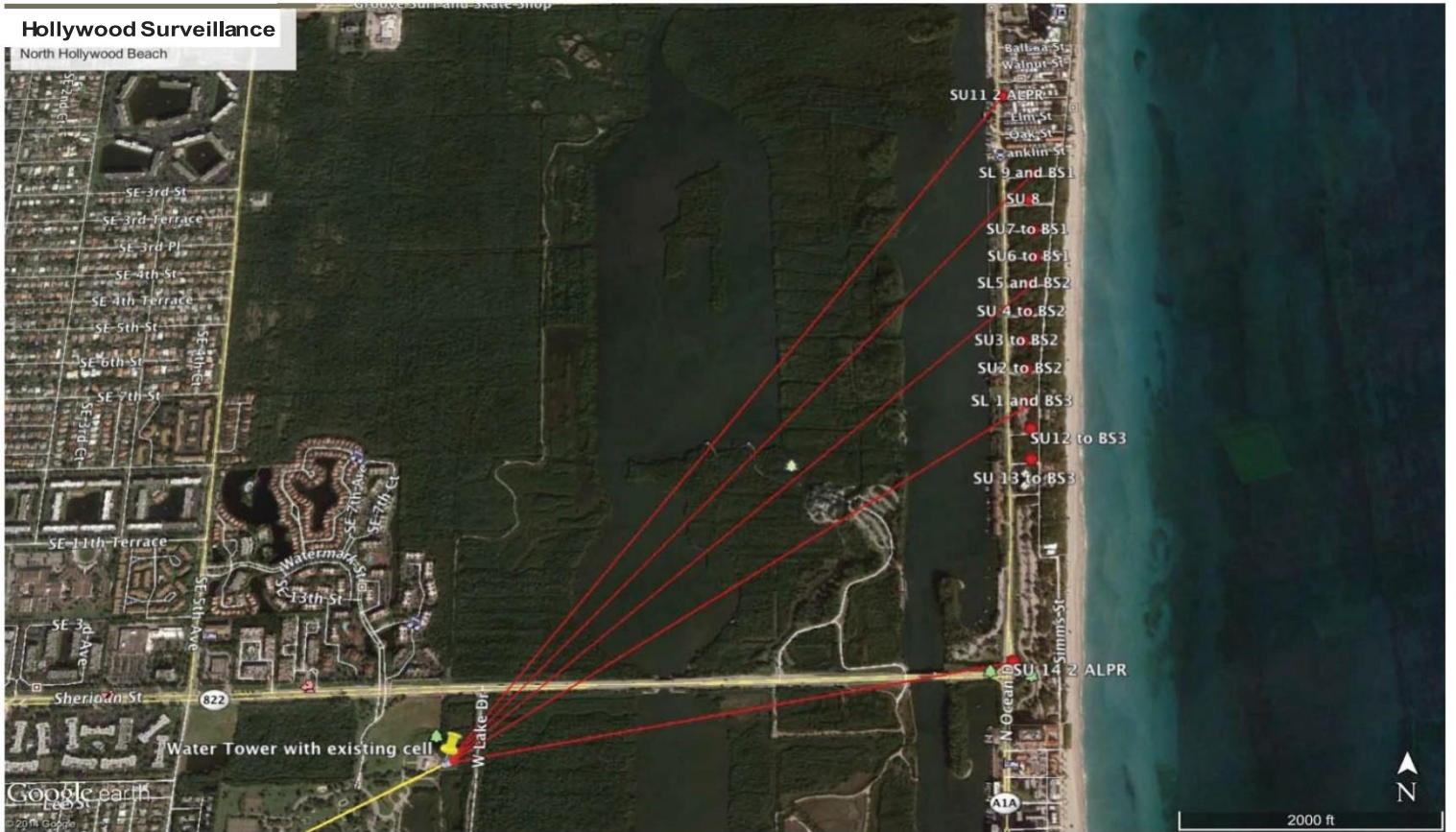
Authorized Signature: *Peter Van Kirk*

PHASE - 1 NORTHBEACH.



Remove Map

PROPOSED WIRELESS SYSTEM DESIGN NORTH BEACH



Remove Map.



QUOTATION

**Phase 1, FUSION CENTER Programming
North Beach Head End Surveillance - CCTV & LPR (ATCi #4)**

5641 S Laburnum Ave
Richmond VA 23231
www.safewareinc.com

Name: City of Hollywood
 Attn: _____
 Phone: _____
 Fax: _____
 Email: _____
 Cust ID: _____
 Freight Terms: USC PPD

Date: 1.13.15
 Expiration Date: _____ Valid till Feb 28th
 Prepared By: Peter Van Kirk
 Phone: 561-400-1029
 Fax: 804-236-0429
 Email: pvan Kirk@safewareinc.com
 Sales Rep: Peter Van Kirk
 Customer Project: _____
 Payment Terms: Per US Communities Contract

LINE	DESCRIPTION
1	1 ONSSI Channel of Net Video. One is needed per channel of video added to the server (one time fee per channel)
2	Video Wall Application - OC-VWM-B ONSSI inclusive of 2 Year SUP
3	Video Wall license per OC-VWM-1C ONSSI with 2 year SUP SUP-OC-VWM-1C-2Y
4	MISCELLANEOUS hardware and HD cabling requirements
5	CABLE PULL
6	COMPLETE PROJECT PERMIT FEES
7	AS BUILT DRAWINGS AND ENGINEERING

QTY	DESCRIPTION	UNIT PRICE	EXTENDED PRICE	SAFWARE LIST PRICE	USC DISCOUNT	YOUR DISCOUNT
	Licenses Phase 2 North Beach					
1	ONSSI Enterprise Licenses	\$3,828.64	\$3,828.64	\$8,565.19	41%	55%
1	ONSSI Virtual Matrix	\$1,704.55	\$1,704.55	\$3,813.31	41%	55%
1	Installation, Programming, Drawings	\$16,958.33	\$16,958.33	\$38,018.98	41%	55%
	TOTAL	\$22,491.52	\$22,491.52	\$50,397.48	41%	55%

Special Notes: US Communities Contract Information - Contract number: 4400001839
 Standard freight charges for shipments within the continental US are paid. Any Hazardous material charges or expedited freight will be billed.
 *Agency must be registered with US Communities at www.uscommunities.org

Authorized Signature: *Peter Van Kirk*



QUOTATION

5641 S Laburnum Ave

Phase 1, North Beach Surveillance Pole 1-4 - CCTV & LPR (ATCi #5)

Richmond VA 23231
www.safewareinc.com

Name: City of Hollywood

Attn: _____

Phone: _____

Fax: _____

Email: _____

Cust ID: _____

Freight Terms: USC PPD

Date: 1.13.15

Expiration Date: _____ Valid till Feb 28th

Prepared By: Peter Van Kirk

Phone: 561-400-1029

Fax: 804-236-0429

Email: pvan Kirk@safewareinc.com

Sales Rep: Peter Van Kirk

Customer Project: _____

Payment Terms: Per US Communities Contract

LINE	DESCRIPTION
1	Included component
2	Exterior PTX SNP-6200RH-SAMSUNG
3	POLE MOUNTING KIT-SBP-300PM-SAMSUNG + custom mount and strapping kit
4	DTKDP4P DITEK
5	ALTRONIX individually Fused Power Supply
6	SL1301BAQB Blue signal light with NTH-12VDC800R power supply
7	ENCLOSURE PACKAGE(Includes: All necessary Mounting Brackets for Enclosure, 6 Port POE Switch, Interior Fan, 485-232 Converter, 120V DITEK Surge Protector)
8	3/4" EMT (40' PER LOCATION)
9	BUCKET TRUCK
10	CABLE PULL
11	LABOR(MOUNTING) Mounting installation for Video Surveillance system including all Boxes, terminations inti system (hours include Senior technician and helper)
12	LABOR (ENERGIZING) Energizing, Focusing, Adjustments of Video Surveillance equipment. (City Staff to be present to determine ideal camera view based on camera site)
13	PROJECT MANAGEMENT
14	MISCELLANEOUS COST-CONNECTORS, Boxes

QTY	DESCRIPTION	UNIT PRICE	EXTENDED PRICE	SAFWARE LIST PRICE	USC DISCOUNT	YOUR DISCOUNT
	Poles 1-4					
1	Install and test Pole 1 camera, enclosure, and peripherals	\$17,442.25	\$17,442.25	\$45,904.41	41%	62%
1	Install and test Pole 2 camera, enclosure, and peripherals	\$17,442.25	\$17,442.25	\$45,904.41	41%	62%
1	Install and test Pole 3 camera, enclosure, and peripherals	\$17,442.25	\$17,442.25	\$45,904.41	41%	62%
1	Install and test Pole 4 camera, enclosure, and peripherals	\$17,442.25	\$17,442.25	\$45,904.41	41%	62%
	TOTAL	\$69,769.00	\$69,769.00	\$183,617.62	41%	62%

Special Notes: US Communities Contract Information - Contract number: 4400001839
Standard freight charges for shipments within the continental US are paid. Any Hazardous material charges or expedited freight will be billed.
*Agency must be registered with US Communities at www.uscommunities.org

Authorized Signature: Peter Van Kirk



QUOTATION

5641 S Laburnum Ave

Phase 1, North Beach Surveillance Pole 5-9 - CCTV & LPR (ATCi #6)

Richmond VA 23231
www.safewareinc.com

Name:	City of Hollywood
Attn:	
Phone:	
Fax:	
Email:	
Cust ID:	
Freight Terms:	USC PPD

Date:	1.13.15	Valid till Feb 28th
Expiration Date:		
Prepared By:	Peter Van Kirk	
Phone:	561-400-1029	
Fax:	804-236-0429	
Email:	pvankirk@safewareinc.com	
Sales Rep:	Peter Van Kirk	
Customer Project:	North Beach Surveillance Pole 5-9 - Milestone 13	
Payment Terms:	Per US Communities Contract	

LINE	DESCRIPTION
1	Exterior PTX SNP-6200RH-SAMSUNG
2	POLE MOUNTING KIT-SBP-300PM-SAMSUNG + custom mount and strapping kit
3	DTKDP4P DITEK
4	ALTRONIX individually Fused Power Supply
5	SL1301BAQB Blue signal light with NTH-12VDC800R power supply
6	ENCLOSURE PACKAGE(Includes: All necessary Mounting Brackets for Enclosure, 6 Port POE Switch, Interior Fan, 485-232 Converter, 120V DITEK Surge Protector)
7	3/4" EMT (40' PER LOCATION)
8	BUCKET TRUCK
9	CABLE PULL
10	LABOR(MOUNTING) Mounting installation for Video Surveillance system including all Boxes, terminations inti system (hours include Senior technician and helper)
11	LABOR (ENERGIZING) Energizing, Focusing, Adjustments of Video Surveillance equipment. (City Staff to be present to determine ideal camera view based on camera site)
12	PROJECT MANAGEMENT
13	MISCELLANEOUS COST-CONNECTORS, Boxes

QTY	DESCRIPTION	UNIT PRICE	EXTENDED PRICE	SAFWARE LIST PRICE	USC DISCOUNT	YOUR DISCOUNT
Poles 5-8						
1	Install and test Pole 5 camera, enclosure, and peripherals	\$17,442.25	\$17,442.25	\$45,904.41	41%	62%
1	Install and test Pole 6 camera, enclosure, and peripherals	\$17,442.25	\$17,442.25	\$45,904.41	41%	62%
1	Install and test Pole 7 camera, enclosure, and peripherals	\$17,442.25	\$17,442.25	\$45,904.41	41%	62%
1	Install and test Pole 8 camera, enclosure, and peripherals	\$17,442.25	\$17,442.25	\$45,904.41	41%	62%
1	Install and test Pole 9 camera, enclosure, and peripherals	\$17,442.25	\$17,442.25	\$45,904.41	41%	62%
	TOTAL	\$87,211.25	\$87,211.25	\$229,522.03	41%	62%

Special Notes: US Communities Contract Information - Contract number: 4400001839
Standard freight charges for shipments within the continental US are paid. Any Hazardous material charges or expedited freight will be billed.
*Agency must be registered with US Communities at www.uscommunities.org

Authorized Signature: Peter Van Kirk



QUOTATION

5641 S Laburnum Ave

Phase 1, North Beach A1A- North & South- CCTV & LPR (ATCi #7)

Richmond VA 23231
www.safewareinc.com

Name: City of Hollywood

Attn: _____

Phone: _____

Fax: _____

Email: _____

Cust ID: _____

Freight Terms: USC PPD

Date: 01.13.15

Expiration Date: _____ Valid till Feb 28th

Prepared By: Peter Van Kirk

Phone: 561-400-1029

Fax: 804-236-0429

Email: pvan Kirk@safewareinc.com

Sales Rep: Peter Van Kirk

Customer Project: _____

Payment Terms: Per US Communities Contract

LINE	DESCRIPTION
1	VMS NEMA ENCLOSURE PACKAGE (Includes: All necessary Mounting Brackets)
2	VIGILANT Car Detector Fixed Camera LPR System - Camera System-LPR SYS-1 model #VSFHXXXW-DL
3	VIGILANT LPR Basic Service Package - VSBSCVC-04
4	VIGILANT LPR Standard Service Package - VSPK1SVC-04
5	VIGILANT System Start Up and Commissioning - SSUPSYS-COM
6	VIGILANT END USER TRAINING FOR LPR SYSTEM-VSPTRNG
7	VIGILANT SHIPPING AND HANDLING -VS-SHP-02
8	Underground, wet location, Cable
9	ONSSI Vigilant per camera integration and server application C2P
10	LABOR (MOUNTING): Mounting installation for Vigilant ALPR system at Pole Location including all Boxes, terminations, connections into system, Aiming, programming, tag optimization

QTY	DESCRIPTION	UNIT PRICE	EXTENDED PRICE	SAFWARE LIST PRICE	USC DISCOUNT	YOUR DISCOUNT
ALPR North South A1A - North Beach						
1	East 2 LPR, Enclosure, and Peripherals (1 covering North/1 South bound lanes)	\$30,781.00	\$30,781.00	\$79,158.61	41%	61%
1	East 2 LPR, Enclosure, and Peripherals (1 covering North/1 South bound lanes)	\$30,781.00	\$30,781.00	\$79,158.61	41%	61%
TOTAL		\$61,562.00	\$61,562.00	\$158,317.22	41%	61%

Special Notes: US Communities Contract Information - Contract number: 4400001839
Standard freight charges for shipments within the continental US are paid. Any Hazardous material charges or expedited freight will be billed.
*Agency must be registered with US Communities at www.uscommunities.org

Authorized Signature: *Peter Van Kirk*



QUOTATION

Phase 1, City of Hollywood, Hollywood Beach/Wireless (a) (ACC #5)

5641 S Laburnum Ave
Richmond VA 23231
www.safewareinc.com

Name:	City of Hollywood
Attn:	
Phone:	
Fax:	
Email:	
Cust ID:	
Freight Terms:	USC PPD

Date:	1.13.15
Expiration Date:	Valid till Feb 28th
Prepared By:	Peter Van Kirk
Phone:	561-400-1029
Fax:	804-236-0429
Email:	pvankirk@safewareinc.com
Sales Rep:	Peter Van Kirk
Customer RFQ:	City of Hollywood, Phase 1, Hollywood Beach A
Payment Terms:	Per US Communities Contract

LINE	QTY	DESCRIPTION	UNIT PRICE	EXTENDED PRICE	SAFWARE LIST PRICE	USC DISCOUNT	YOUR DISCOUNT
PHASE 1							
HOLLYWOOD BEACH A							
1	1	SL11 - Unlicensed PTP 5.8 - Service	\$ 578.00	\$ 578.00	\$ 1,432.36	41%	60%
2	1	SL11 - Unlicensed PTP 5.8 - Equipment	\$ 3,532.40	\$ 3,532.40	\$ 11,657.87	41%	70%
3	2	SL9 and BS1 - Service	\$ 578.00	\$ 1,156.00	\$ 1,432.36	41%	60%
4	1	SL9 and BS1 - Unlicensed PTP 5.8 - Equipment	\$ 3,532.40	\$ 3,532.40	\$ 11,657.87	41%	70%
5	2	SL2 and BS1 Services	\$ 578.00	\$ 1,156.00	\$ 1,432.36	41%	60%
6	1	SL2 and BS1 Unlicensed PTP 5.8	\$ 3,532.40	\$ 3,532.40	\$ 11,657.87	41%	70%
7	1	SL2 and BS1 Unlicensed PMP BS	\$ 5,404.63	\$ 5,404.63	\$ 10,998.45	41%	51%
8	1	SU4 - Unlicensed PMP SU - Service	\$ 578.00	\$ 578.00	\$ 1,432.36	41%	60%
9	1	SU4 - Unlicensed PMP SU - Equipment	\$ 1,359.65	\$ 1,359.65	\$ 6,015.38	41%	77%
10	1	SU3 - Unlicensed PMP SU - Service	\$ 578.00	\$ 578.00	\$ 1,432.36	41%	60%
11	1	SU3 - Unlicensed PMP SU - Equipment	\$ 1,359.65	\$ 1,359.65	\$ 6,015.38	41%	77%
12	4	SU8 - Unlicensed PMP SU - Service	\$ 578.00	\$ 2,312.00	\$ 1,432.36	41%	60%
13	4	SU8 - Unlicensed PMP SU - Equipment	\$ 1,359.65	\$ 5,438.59	\$ 6,015.38	41%	77%
PROPOSAL TOTAL				\$	30,517.70		

Special Notes: US Communities Contract Information - Contract number: 4400001839
Standard freight charges for shipments within the continental US are paid. Any Hazardous material charges or expedited freight will be billed.
*Agency must be registered with US Communities at www.uscommunities.org

Authorized Signature: *Peter Van Kirk*



QUOTATION

Phase 1, City of Hollywood, Hollywood Beach/Wireless (b) (ACC #6)

5641 S Laburnum Ave
Richmond VA 23231
www.safewareinc.com

Name: City of Hollywood
 Attn: _____
 Phone: _____
 Fax: _____
 Email: _____
 Cust ID: _____
 Freight Terms: USC PPD

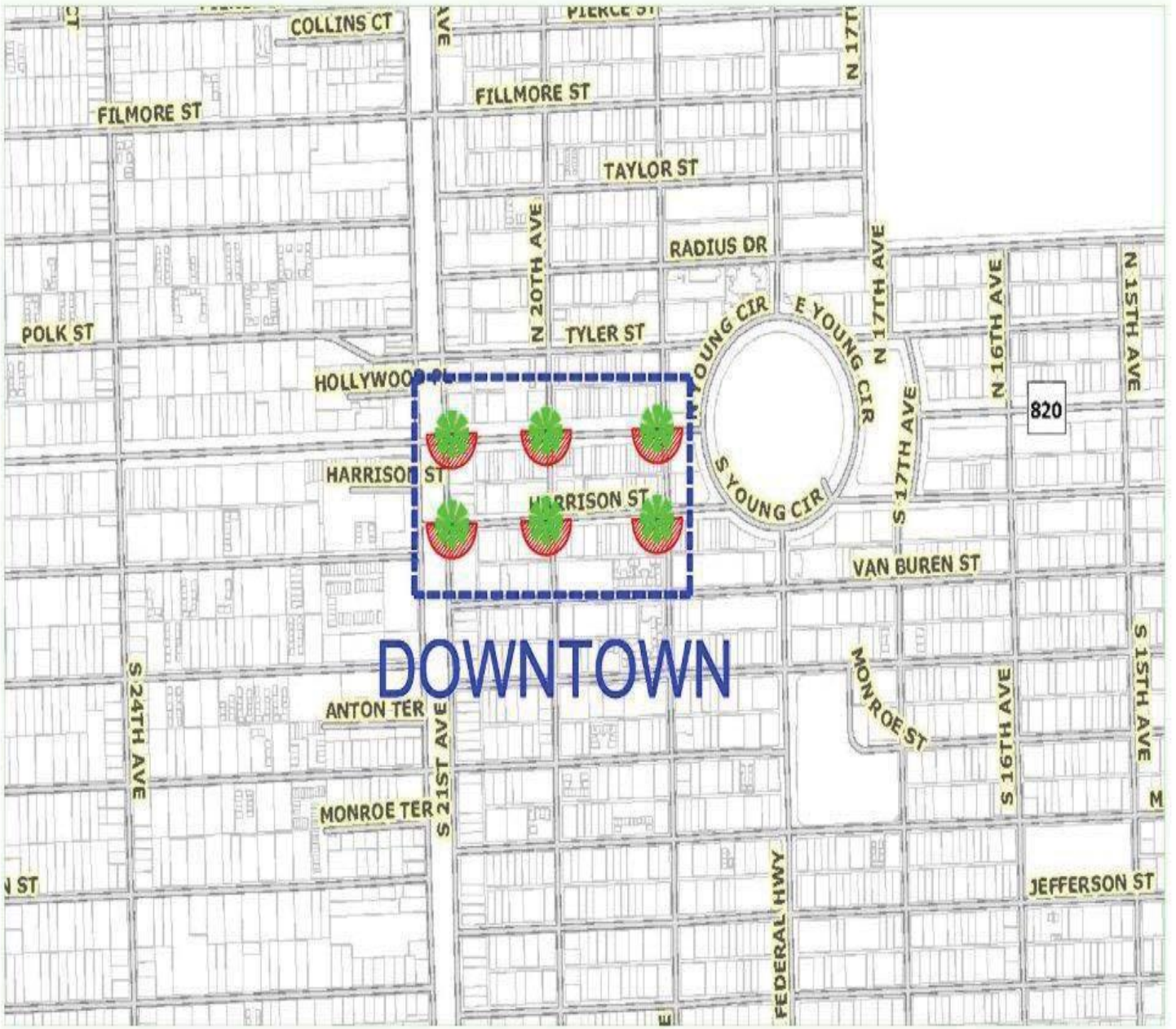
Date: 1.13.15
 Expiration Date: _____ Valid till Feb 28th
 Prepared By: Peter Van Kirk
 Phone: 561-400-1029
 Fax: 804-236-0429
 Email: pvankirk@safewareinc.com
 Sales Rep: Peter Van Kirk
 Customer RFQ: City of Hollywood, Phase 1, Hollywood Beach
 Payment Terms: Per US Communities Contract

LINE	QTY	DESCRIPTION	UNIT PRICE	EXTENDED PRICE	SAFWARE LIST PRICE	USC DISCOUNT	YOUR DISCOUNT
PHASE 2							
HOLLYWOOD BEACH b							
1	2	SL5 and BS2 - Service	\$ 578.00	\$ 1,156.00	\$ 1,432.36	41%	60%
2	1	SL5 and BS2 - Unlicensed PTP 5.8 - Equipment	\$ 3,532.40	\$ 3,532.40	\$ 11,657.87	41%	70%
3	1	SL5 and BS2 - Unlicensed PMP BS - Equipment	\$ 5,404.63	\$ 5,404.63	\$ 10,998.45	41%	51%
4	1	SU12 - Unlicnesed PMP SU - Service	\$ 578.00	\$ 578.00	\$ 1,432.36	41%	60%
5	1	SU12 - Unlicensed PMP SU - Equipment	\$ 1,359.65	\$ 1,359.65	\$ 6,015.38	41%	77%
6	1	SU13 - Unlicensed PMP SU - Service	\$ 578.00	\$ 578.00	\$ 1,432.36	41%	60%
7	1	SU13 - Unlicensed PMP SU - Equipment	\$ 1,359.65	\$ 1,359.65	\$ 6,015.38	41%	77%
8	1	SU14 - Unlicensed PTP 5.8 - Service	\$ 578.00	\$ 578.00	\$ 1,432.36	41%	60%
9	1	SU14 - Unlicensed PTP 5.8 - Equipment	\$ 3,532.40	\$ 3,532.40	\$ 11,657.87	41%	70%
10	2	SU15 - Unlicensed PTP 5.8 - Service	\$ 578.00	\$ 1,156.00	\$ 1,432.36	41%	60%
11	1	SU15 - Unlicensed PTP 5.8 - Equipment	\$ 3,532.40	\$ 3,532.40	\$ 11,657.87	41%	70%
PROPOSAL TOTAL				\$ 22,767.11			

Special Notes: US Communities Contract Information - Contract number: 4400001839
 Standard freight charges for shipments within the continental US are paid. Any Hazardous material charges or expedited freight will be billed.
 *Agency must be registered with US Communities at www.uscommunities.org

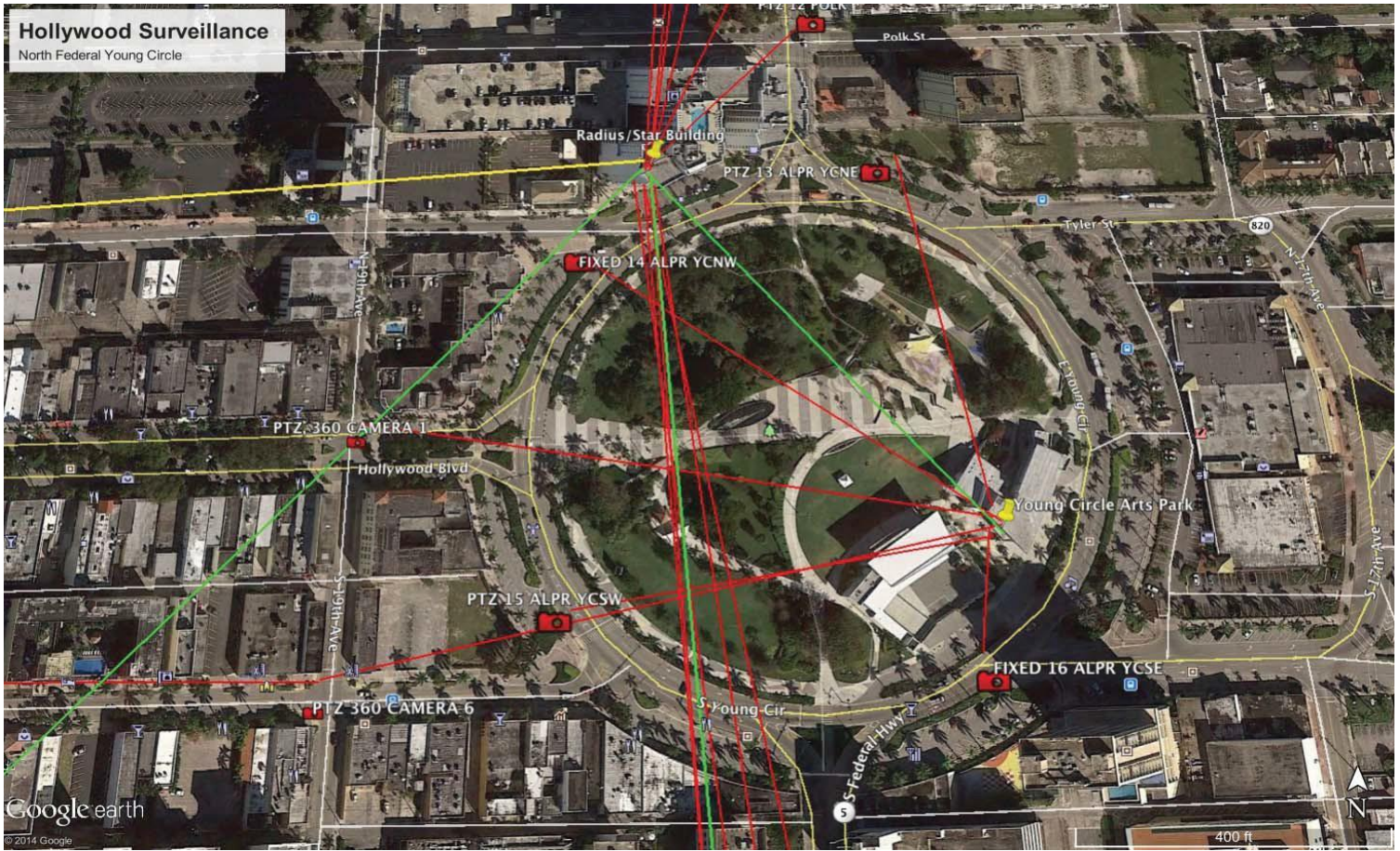
Authorized Signature: Peter Van Kirk

Phase II DOWNTOWN CCTV MAP:

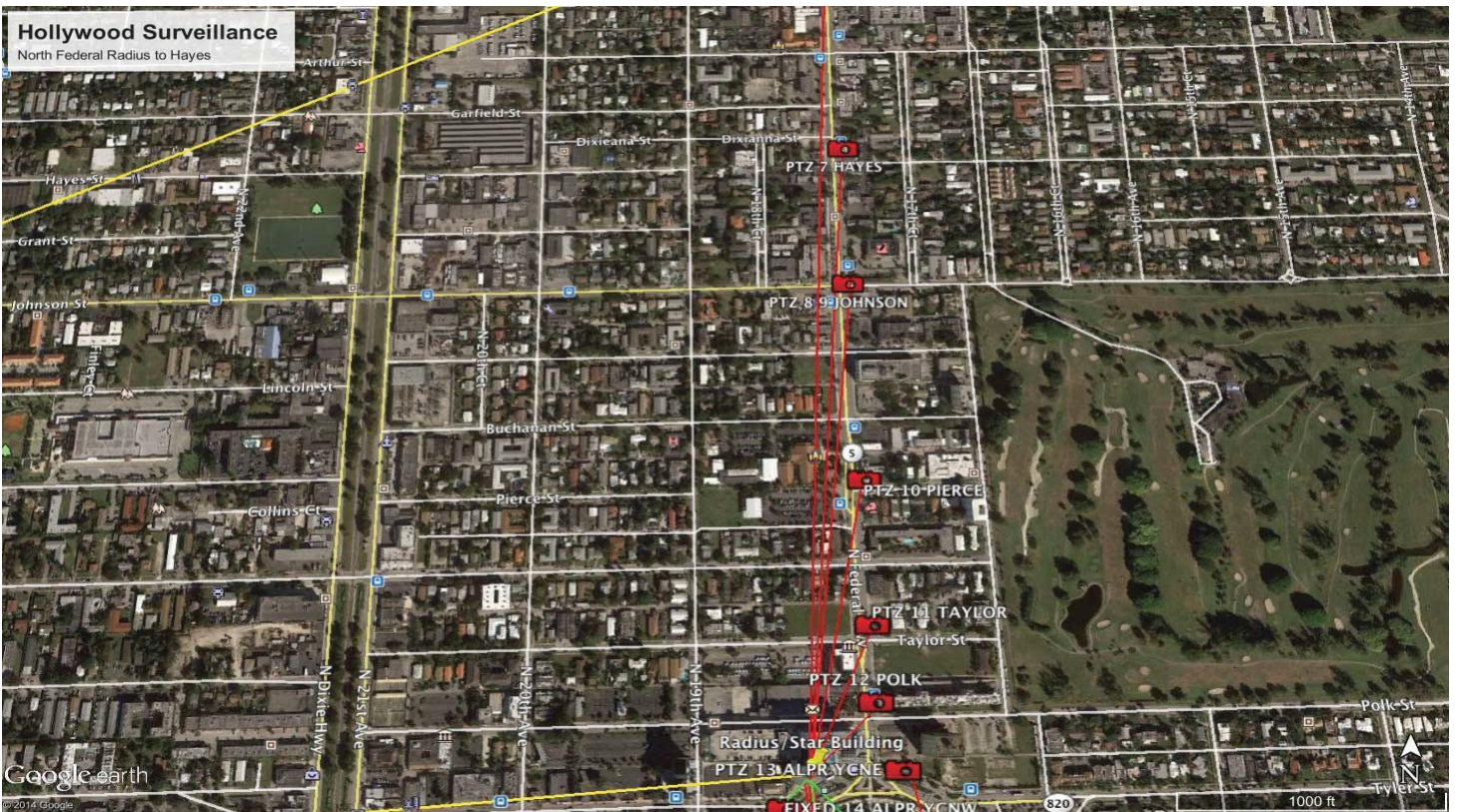


Remove Map.

Young Circle and Downtown Coverage

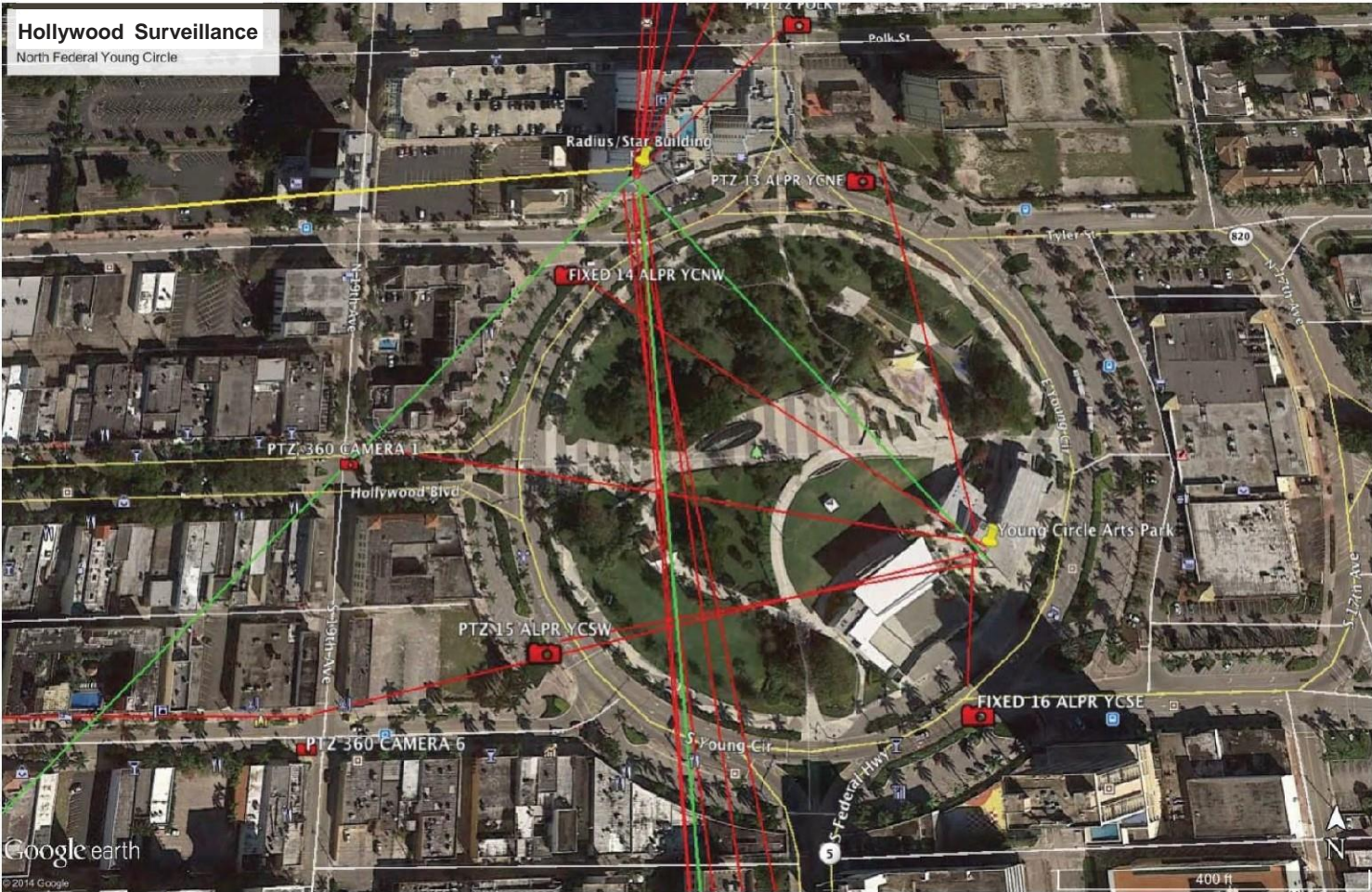


North Federal Radius to Hayes

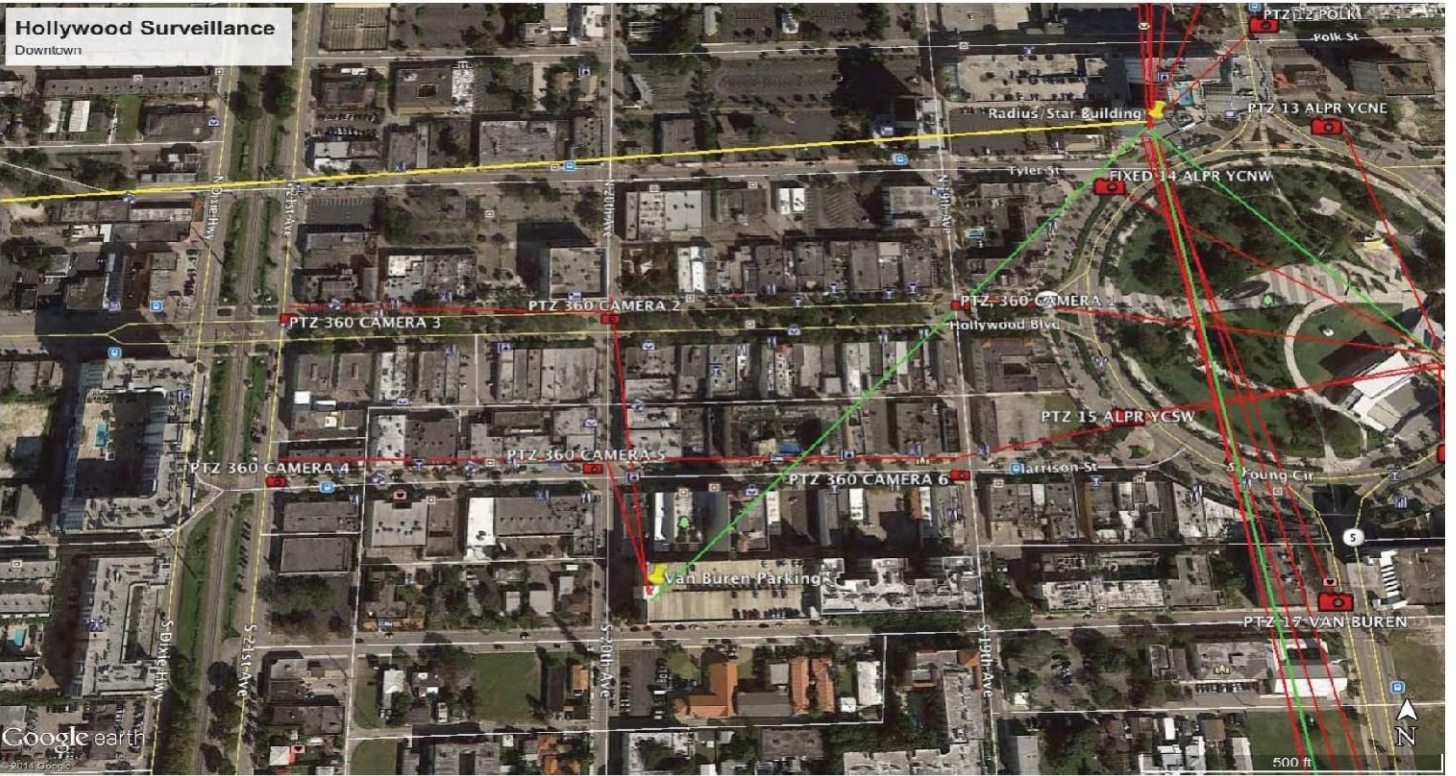


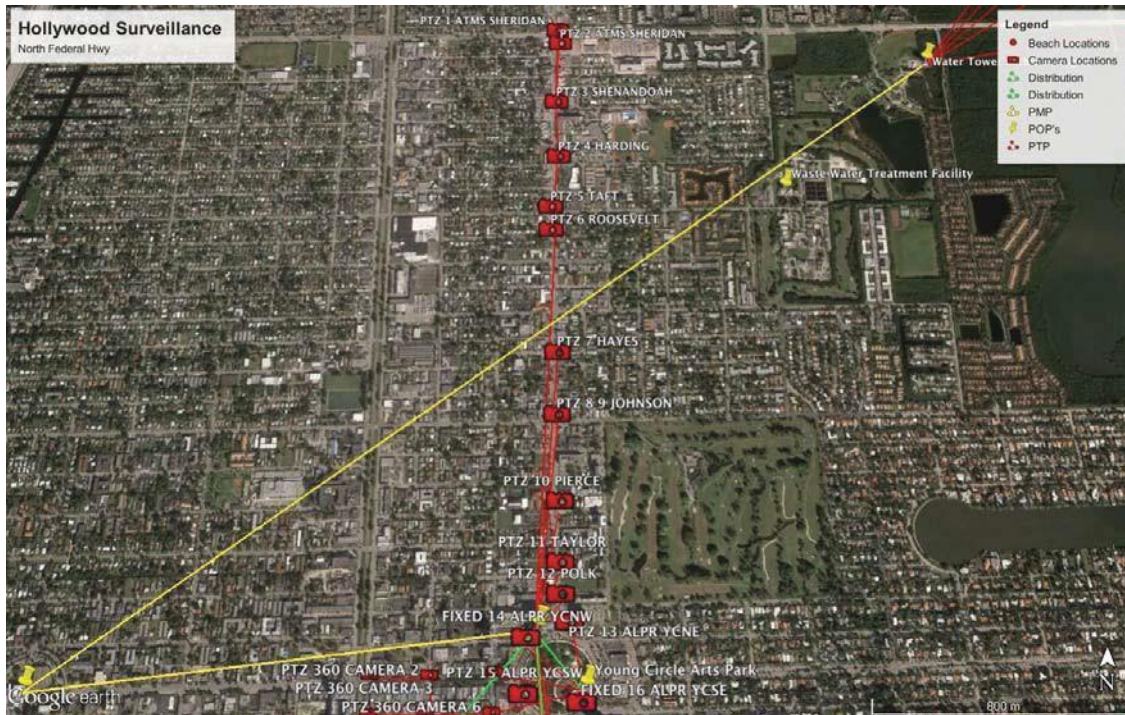
Remove Map

PROPOSED WIRELESS SYSTEM DESIGN DOWNTOWN

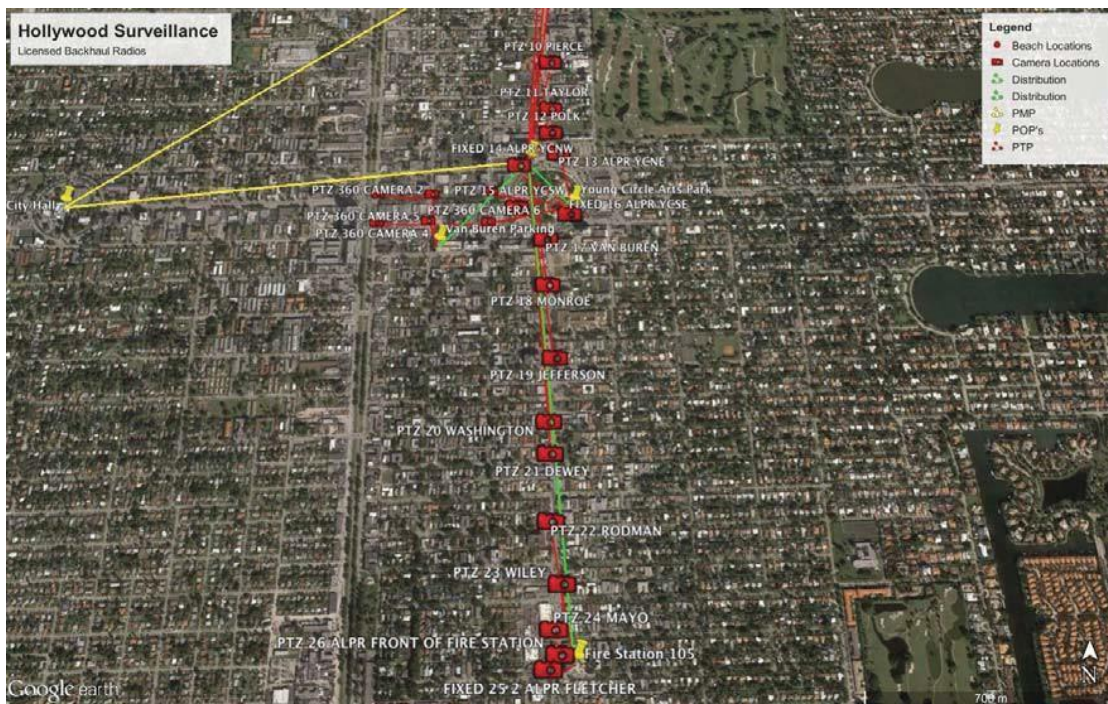


Remove Map

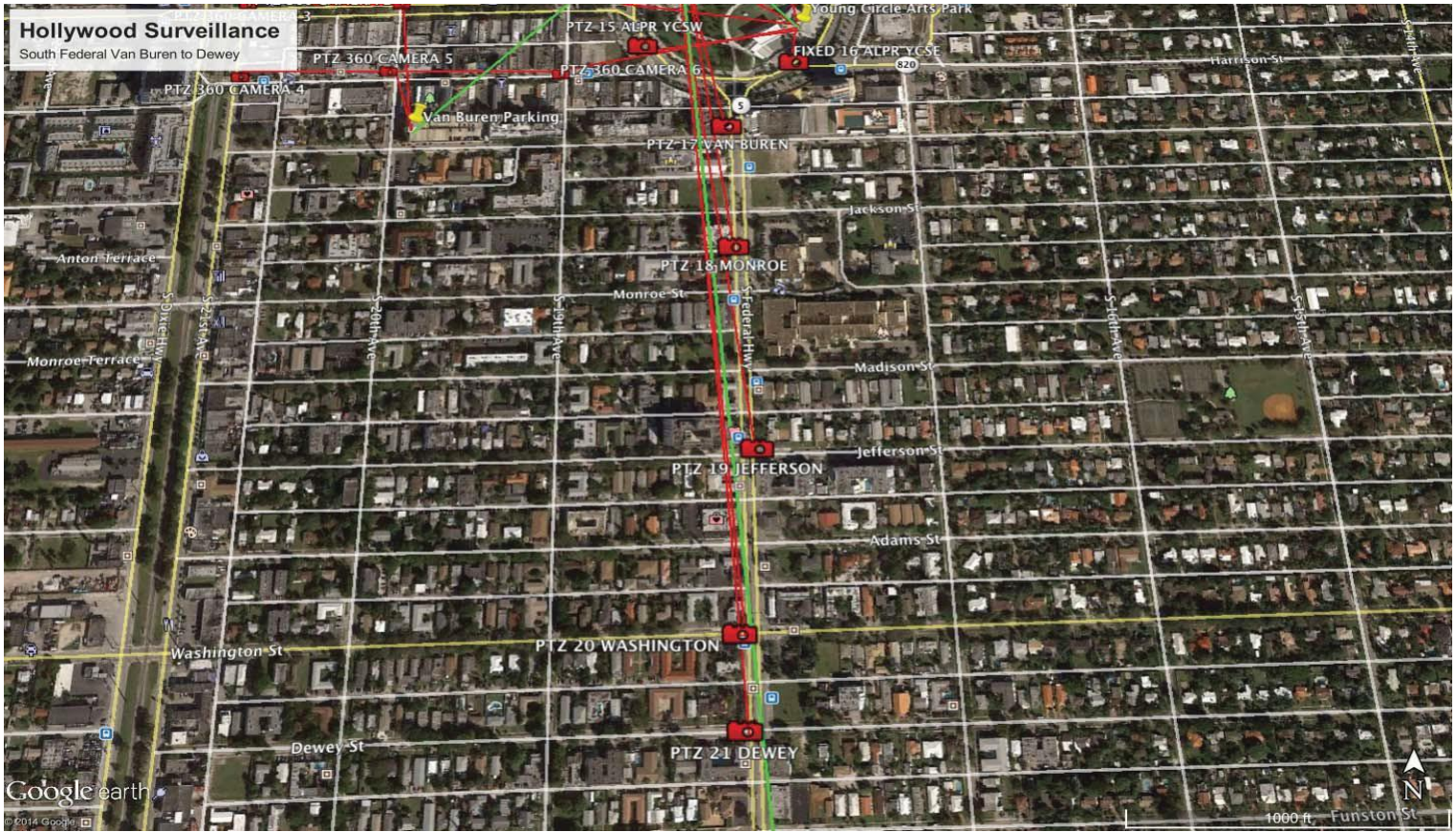




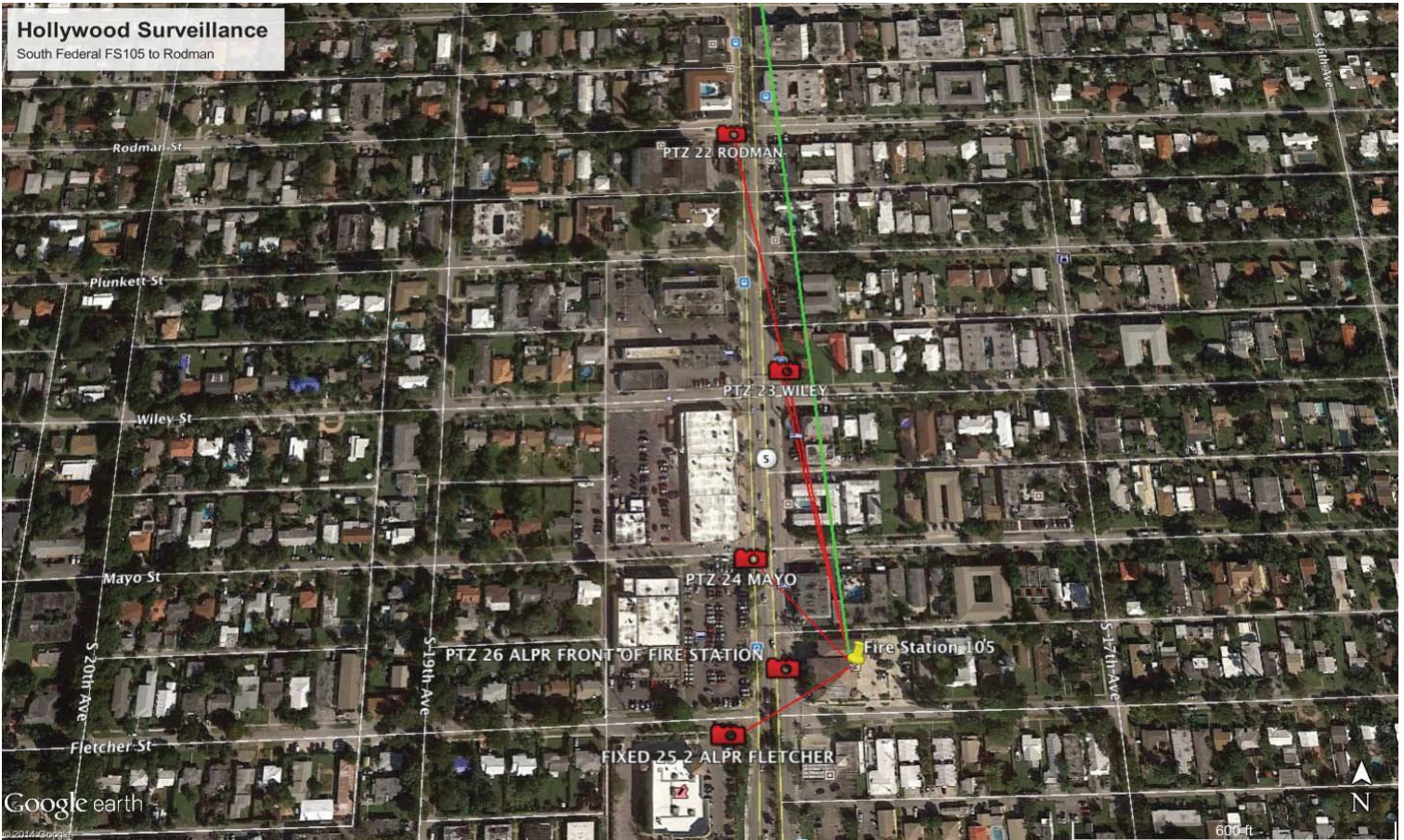
In the south side of Federal Highway, a line of sight PTP link will be used to connect to Fire Station 105 to allow it to act as an aggregation point using point to multi-point radios by Cerragon to backhaul the cameras in proximity.



South Federal Highway



Fire Station 105 Aggregation





QUOTATION

**Phase 2, Downtown FUSION CENTER Programming/
Surveillance Head End - Licensing - CCTV & LPR (ATCi #8)**

5641 S Laburnum Ave
Richmond VA 23231
www.safewareinc.com

Name: City of Hollywood

Attn:

Phone:

Fax:

Email:

Cust ID:

Freight Terms: USC PPD

Date: 1.13.15

Expiration Date: Valid till Feb 28th

Prepared By: Peter Van Kirk

Phone: 561-400-1029

Fax: 804-236-0429

Email: pvan Kirk@safewareinc.com

Sales Rep: Peter Van Kirk

Customer Project:

Payment Terms: Per US Communities Contract

LINE	DESCRIPTION
1	1 ONSSI Channel of Net Video. One is needed per channel of video added to the server (one time fee per channel)
2	Video Wall Application - OC-VWM-B ONSSI inclusive of 2 Year SUP
3	Video Wall license per OC-VWM-IC ONSSI with 2 year SUP SUP-OC-VWM-IC-2Y
4	COMPLETE PROJECT PERMIT FEES
5	AS BUILTS DRAWINGS AND ENGINEERING

QTY	DESCRIPTION	UNIT PRICE	EXTENDED PRICE	SAFWARE LIST PRICE	USC DISCOUNT	YOUR DISCOUNT
Licenses Downtown - Head end licensing and Asbuilts						
1	ONSSI Enterprise Licenses	\$3,828.64	\$3,828.64	\$17,716.98	41%	78%
1	ONSSI Virtual Matrix	\$1,704.55	\$1,704.55	\$7,887.78	41%	78%
1	Installation, Programming, Drawings	\$11,824.73	\$11,824.73	\$55,067.20	41%	78%
	TOTAL	\$17,357.92	\$17,357.92	\$80,671.97	41%	78%

Special Notes: US Communities Contract Information - Contract number: 4400001839
Standard freight charges for shipments within the continental US are paid. Any Hazardous material charges or expedited freight will be billed.
*Agency must be registered with US Communities at www.uscommunities.org

Authorized Signature: *Peter Van Kirk*



QUOTATION

Phase 2, Downtown Surveillance Hollywood Blvd and Harrison - 5641 S Laburnum Ave
CCTV & LPR (ATCi #9) Richmond VA 23231
www.safewareinc.com

Name: City of Hollywood
 Attn: _____
 Phone: _____
 Fax: _____
 Email: _____
 Cust ID: _____
 Freight Terms: USC PPD

Date: 1.13.15
 Expiration Date: _____ Valid till Feb 28th
 Prepared By: Peter Van Kirk
 Phone: 561-400-1029
 Fax: 804-236-0429
 Email: pvankirk@safewareinc.com
 Sales Rep: Peter Van Kirk
 Customer Project: _____
 Payment Terms: Per US Communities Contract

LINE	DESCRIPTION
1	Included component
2	Exterior PTX SNP-6200RH-SAMSUNG
3	POLE MOUNTING KIT-SBP-300PM-SAMSUNG + custom mount and strapping kit
4	Sony SNC-HM662 360/180 HD day night vandal camera
5	POLE MOUNTING KIT-SONY HD 360 - Custom fabricated and powder coated for Hollywood
6	DTKDP4P DITEK
7	ALTRONIX individually Fused Power Supply
8	SL1301BAQB Blue signal light with NTH-12VDC800R power supply
9	ENCLOSURE PACKAGE(Includes: All necessary Mounting Brackets for Enclosure, 6 Port POE Switch, Interior Fan, 485-232 Converter, 120V DITEK Surge Protector)
10	3/4" EMT (40' PER LOCATION)
11	BUCKET TRUCK
12	CABLE PULL
13	LABOR(MOUNTING) Mounting installation for Video Surveillance system including all Boxes, terminations inti system (hours include Senior technician and helper)
14	LABOR (ENERGIZING) Energizing, Focusing, Adjustments of Video Surveillance equipment. (City Staff to be present to determine ideal camera view based on camera site)
15	PROJECT MANAGEMENT
16	MISCELLANEOUS COST-CONNECTORS, Boxes

QTY	DESCRIPTION	UNIT PRICE	EXTENDED PRICE	SAFWARE LIST PRICE	USC DISCOUNT	YOUR DISCOUNT
Down Town Harrison Street and Hollywood Blvd						
1	Install and test Hollywood 21st camera, enclosure, and peripherals	\$17,448.00	\$17,448.00	\$40,635.91	41%	57%
1	Install and test Hollywood 20th camera, enclosure, and peripherals	\$17,448.00	\$17,448.00	\$40,635.91	41%	57%
1	Install and test Harrison 20th camera, enclosure, and peripherals	\$17,448.00	\$17,448.00	\$40,635.91	41%	57%
1	Install and test Hollywood 19th camera, enclosure, and peripherals	\$17,448.00	\$17,448.00	\$40,635.91	41%	57%
TOTAL		\$69,792.00	\$69,792.00	\$162,543.65	41%	57%

Special Notes: US Communities Contract Information - Contract number: 4400001839
 Standard freight charges for shipments within the continental US are paid. Any Hazardous material charges or expedited freight will be billed.
 *Agency must be registered with US Communities at www.uscommunities.org

Authorized Signature: *Peter Van Kirk*



QUOTATION

Phase 2-Downtown to Van Buren Parking-Wireless (ACC #7)

5641 S Laburnum Ave
Richmond VA 23231
www.safewareinc.com

Name: City of Hollywood
 Attn:
 Phone:
 Fax:
 Email:
 Cust ID:
 Freight Terms: USC PPD

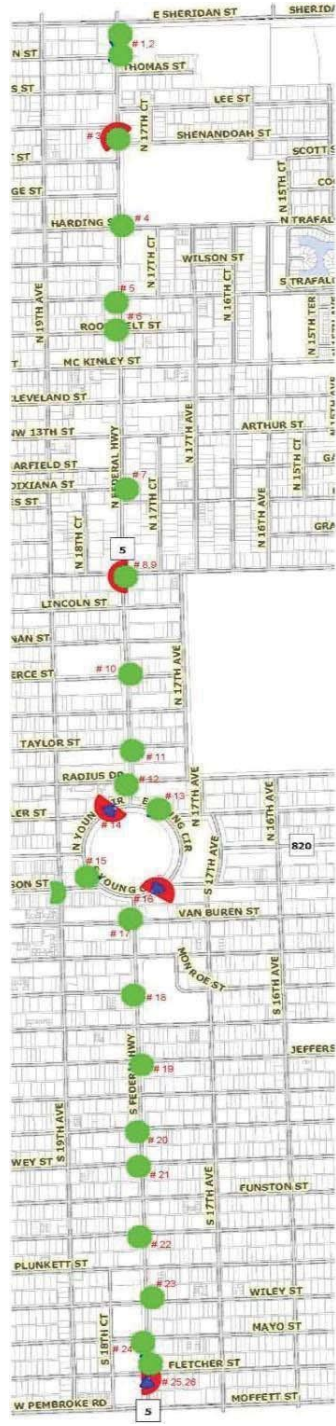
Date: 1.13.15
 Expiration Date: Valid till Feb 28th
 Prepared By: Peter Van Kirk
 Phone: 561-400-1029
 Fax: 804-236-0429
 Email: pvankirk@safewareinc.com
 Sales Rep: Peter Van Kirk
 Customer RFQ: City of Hollywood, Phase 2, Down Town
 Payment Terms: Per US Communities Contract

LINE	QTY	DESCRIPTION	UNIT PRICE	EXTENDED PRICE	SAFWARE LIST PRICE	USC DISCOUNT	YOUR DISCOUNT
PHASE 2							
DOWN TOWN							
1	1	DT2 - Unlicensed PMP SU - Service	\$ 578.00	\$ 578.00	\$ 1,432.36	41%	60%
2	1	DT2 - Unlicensed PMP SU - Equipment	\$ 1,359.65	\$ 1,359.65	\$ 6,015.38	41%	77%
3	1	DT3 - Unlicensed PMP SU - Service	\$ 578.00	\$ 578.00	\$ 1,432.36	41%	60%
4	1	DT3 - Unlicensed PMP SU - Equipment	\$ 1,359.65	\$ 1,359.65	\$ 6,015.38	41%	77%
5	1	DT4 - Unlicensed PTP SU - Service	\$ 578.00	\$ 578.00	\$ 1,432.36	41%	60%
6	1	DT4 - Unlicensed PTP SU - Equipment	\$ 3,532.40	\$ 3,532.40	\$ 11,657.87	41%	70%
7	1	DT 6 - Unlicensed PMP SU - Service	\$ 578.00	\$ 578.00	\$ 1,432.36	41%	60%
8	1	DT 6 - Unlicensed PMP SU - Equipment	\$ 1,359.65	\$ 1,359.65	\$ 6,015.38	41%	77%
PROPOSAL TOTAL				\$ 9,923.34			

Special Notes: US Communities Contract Information - Contract number: 4400001839
 Standard freight charges for shipments within the continental US are paid. Any Hazardous material charges or expedited freight will be billed.
 *Agency must be registered with US Communities at www.uscommunities.org

Authorized Signature: *Peter Van Kirk*

PHASE 3- FEDERAL HIGHWAY LPR AND SURVEILLANCE MAP:



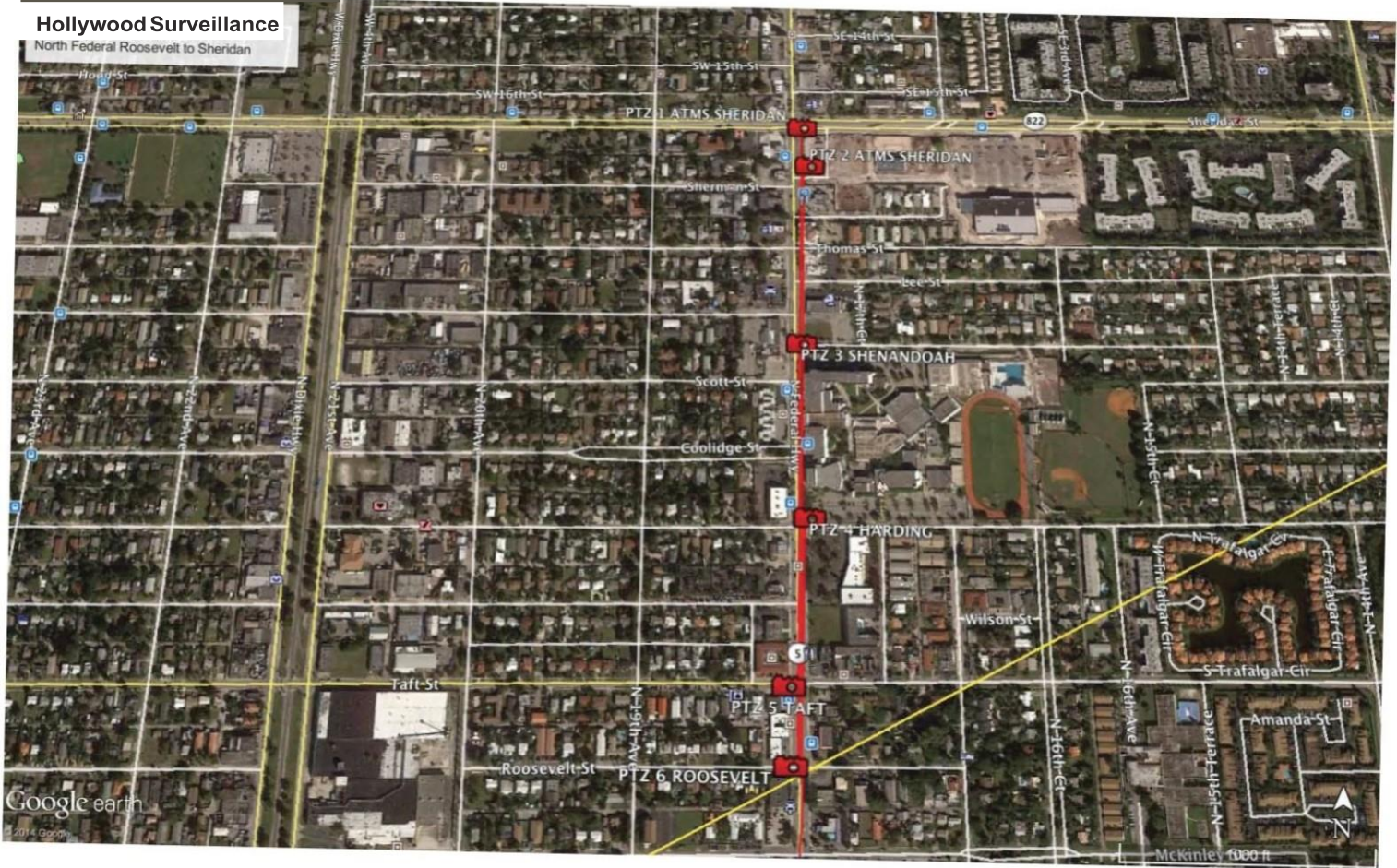
Remove Map

PHASE - 3
FEDERAL HWY.

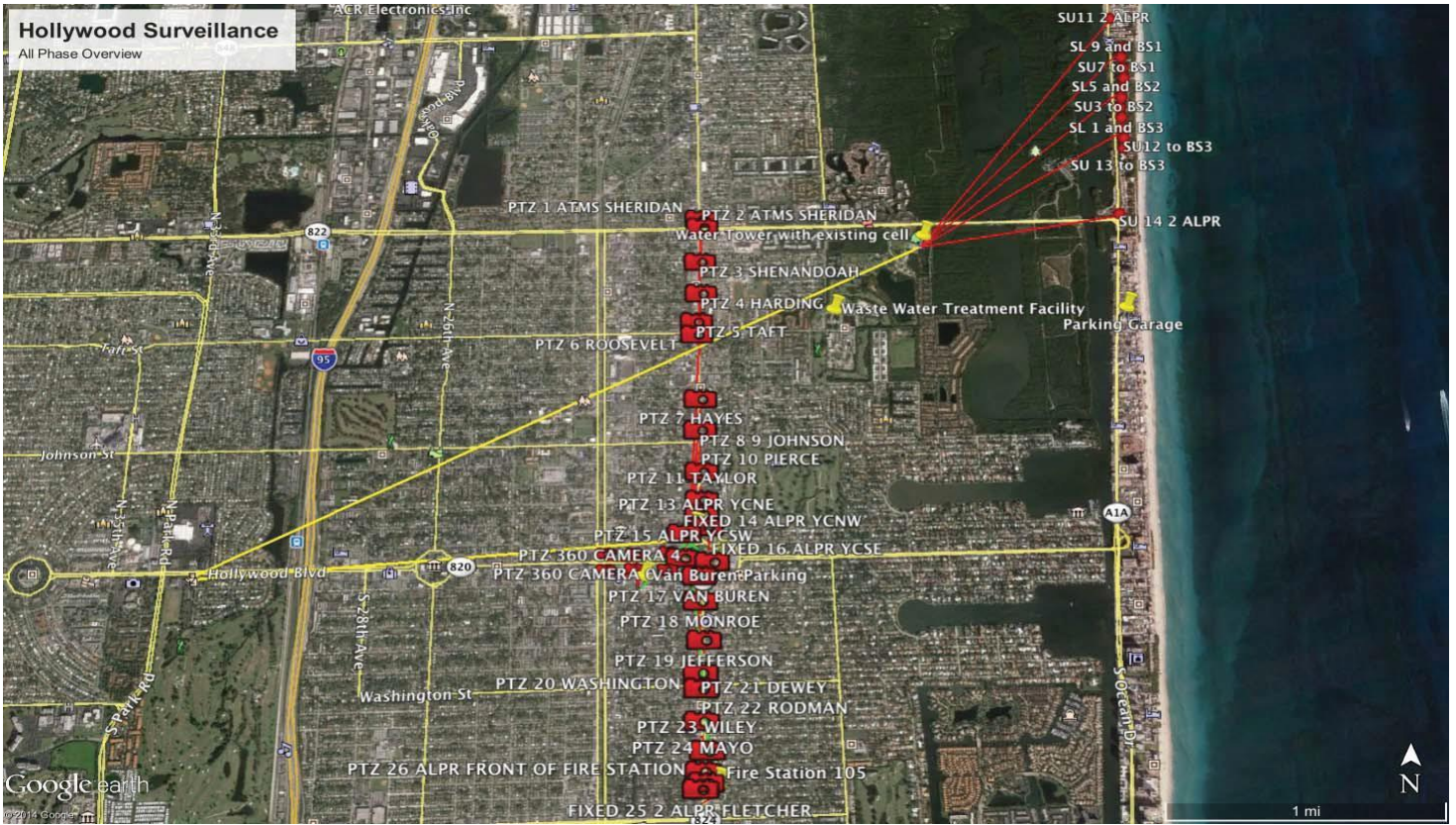
North Federal Roosevelt to Sheridan

Remove Map

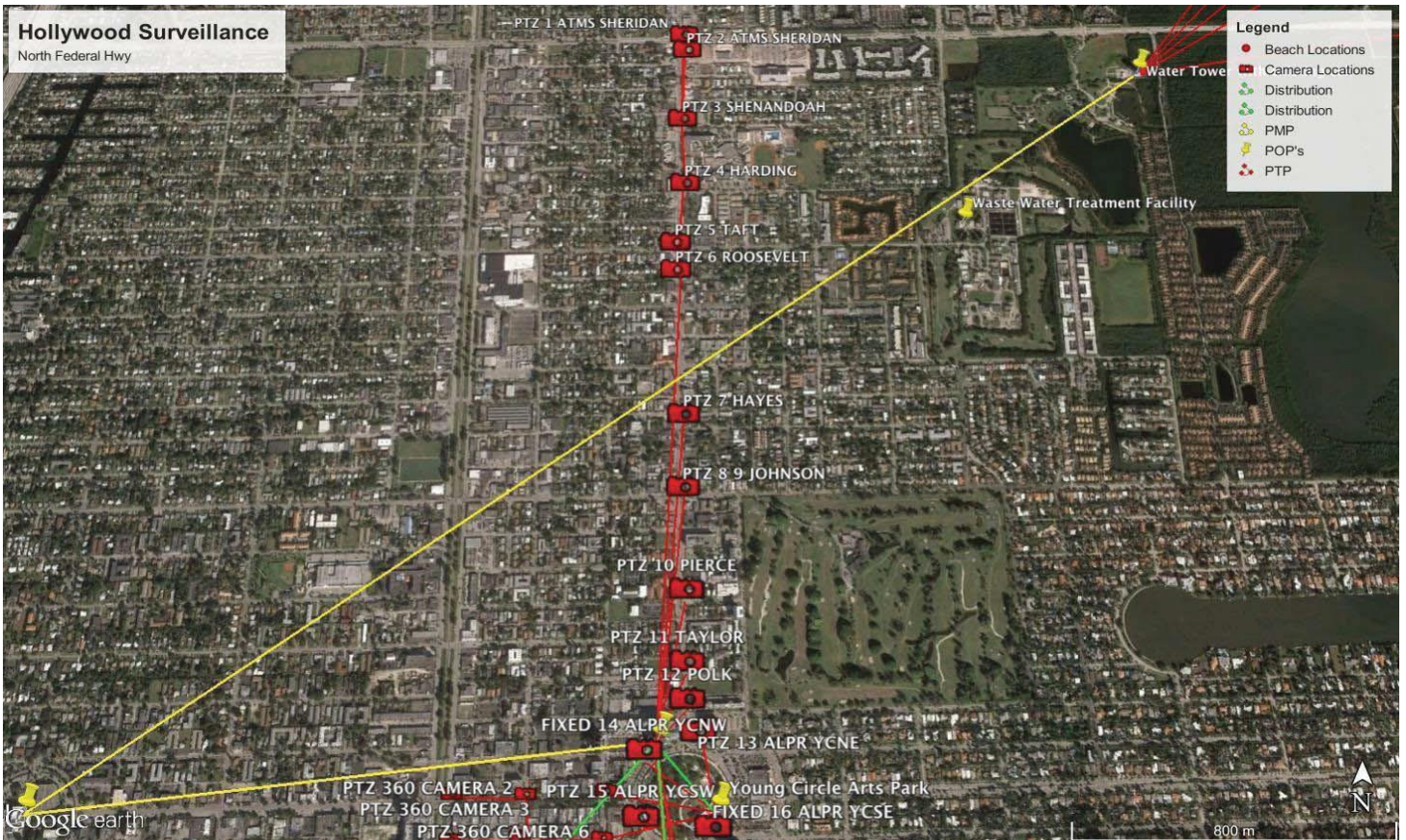
Hollywood Surveillance
North Federal Roosevelt to Sheridan



PROPOSED WIRELESS SYSTEM DESIGN FEDERAL HIGHWAY:



North Federal Highway





QUOTATION

5641 S Laburnum Ave

Richmond VA 23231

www.safewareinc.com

Phase 3, S Fed Hwy Rodman - Fletcher (Including Station 105) - CCTV & LPR (ATCi #10)

Name: City of Hollywood

Attn:

Phone:

Fax:

Email:

Cust ID:

Freight Terms: USC PPD

Date: 1.13.15

Expiration Date: Valid till Feb 28th

Prepared By: Peter Van Kirk

Phone: 561-400-1029

Fax: 804-236-0429

Email: pvan Kirk@safewareinc.com

Sales Rep: Peter Van Kirk

Customer Project:

Payment Terms: Per US Communities Contract

LINE	DESCRIPTION
1	Exterior PTX SNP-6200RH-SAMSUNG
2	POLE MOUNTING KIT-SBP-300PM-SAMSUNG + custom mount and strapping kit
3	Sony SNC-HM662 360/180 HD day night vandal camera
4	POLE MOUNTING KIT-SONY HD 360 - Custom fabricated and powder coated for Hollywood
5	DTKDP4P DITEK
6	ALTRONIX individually Fused Power Supply
7	SL1301BAQB Blue signal light with NTH-12VDC800R power supply
8	ENCLOSURE PACKAGE(Includes: All necessary Mounting Brackets for Enclosure, 6 Port POE Switch, Interior Fan, 485-232 Converter, 120V DITEK Surge Protector)
9	3/4" EMT (40' PER LOCATION)
10	BUCKET TRUCK
11	CABLE PULL
12	LABOR(MOUNTING) Mounting installation for Video Surveillance system including all Boxes, terminations inti system (hours include Senior technician and helper)
13	LABOR (ENERGIZING) Energizing, Focusing, Adjustments of Video Surveillance equipment. (City Staff to be present to determine ideal camera view based on camera site)
14	PROJECT MANAGEMENT
15	MISCELLANEOUS COST-CONNECTORS, Boxes

QTY	DESCRIPTION	UNIT PRICE	EXTENDED PRICE	SAFWARE LIST PRICE	USC DISCOUNT	YOUR DISCOUNT
Dewey - Station 105						
1	Install and test Wiley camera, enclosure, and peripherals	\$17,448.00	\$17,448.00	\$39,537.51	41%	56%
1	Install and test FS105 camera, enclosure, and peripherals	\$17,448.00	\$17,448.00	\$39,537.51	41%	56%
1	Install and test Fletcher camera, enclosure, and peripherals	\$17,448.00	\$17,448.00	\$39,537.51	41%	56%
TOTAL		\$52,344.00	\$52,344.00	\$118,612.52	41%	56%

Special Notes: US Communities Contract Information - Contract number: 4400001839
 Standard freight charges for shipments within the continental US are paid. Any Hazardous material charges or expedited freight will be billed.
 *Agency must be registered with US Communities at www.uscommunities.org

Authorized Signature: Peter Van Kirk



QUOTATION

5641 S Laburnum Ave

Phase 3, Radius South Vanburen to Dewey Surveillance - CCTV & LPR (ATCi #11)

Richmond VA 23231
www.safewareinc.com

Name: City of Hollywood

Attn: _____

Phone: _____

Fax: _____

Email: _____

Cust ID: _____

Freight Terms: USC PPD

Date: 1.13.15

Expiration Date: _____ Valid till Feb 28th

Prepared By: Peter Van Kirk

Phone: 561-400-1029

Fax: 804-236-0429

Email: pvankirk@safewareinc.com

Sales Rep: Peter Van Kirk

Customer Project: Radius South Vanburen to Dewey Surveillance - Milestone 5

Payment Terms: Per US Communities Contract

LINE	DESCRIPTION
1	Exterior PTX SNP-6200RH-SAMSUNG
2	POLE MOUNTING KIT-SBP-300PM-SAMSUNG + custom mount and strapping kit
3	DTKDP4P DITEK
4	ALTRONIX individually Fused Power Supply
5	SL1301BAQB Blue signal light with NTH-12VDC800R power supply
6	ENCLOSURE PACKAGE(Includes: All necessary Mounting Brackets for Enclosure, 6 Port POE Switch, Interior Fan, 485-232 Converter, 120V DITEK Surge Protector)
7	3/4" EMT (40' PER LOCATION)
8	BUCKET TRUCK
9	CABLE PULL
10	LABOR(MOUNTING) Mounting installation for Video Surveillance system including all Boxes, terminations inti system (hours include Senior technician and helper)
11	LABOR (ENERGIZING) Energizing, Focusing, Adjustments of Video Surveillance equipment. (City Staff to be present to determine ideal camera view based on camera site)
12	PROJECT MANAGEMENT
13	MISCELLANEOUS COST-CONNECTORS, Boxes

QTY	DESCRIPTION	UNIT PRICE	EXTENDED PRICE	SAFEWARE LIST PRICE	USC DISCOUNT	YOUR DISCOUNT
Radius South Van Buren - Dewey						
1	Install and test Van Buren camera, enclosure, and peripherals	\$17,448.00	\$17,448.00	\$39,537.51	41%	56%
1	Install and test Monroe camera, enclosure, and peripherals	\$17,448.00	\$17,448.00	\$39,537.51	41%	56%
1	Install and test Dewey camera, enclosure, and peripherals	\$17,448.00	\$17,448.00	\$39,537.51	41%	56%
	TOTAL	\$52,344.00	\$52,344.00	\$118,612.52	41%	56%

Special Notes: US Communities Contract Information - Contract number: 4400001839
Standard freight charges for shipments within the continental US are paid. Any Hazardous material charges or expedited freight will be billed.
*Agency must be registered with US Communities at www.uscommunities.org

Authorized Signature: *Peter Van Kirk*



QUOTATION

5641 S Laburnum Ave

Phase 3, Young Circle Surveillance - CCTV & LPR (ATCi #12)

Richmond VA 23231
www.safewareinc.com

Name: City of Hollywood

Attn: _____

Phone: _____

Fax: _____

Email: _____

Cust ID: _____

Freight Terms: USC PPD

Date: 1.13.15

Expiration Date: _____ Valid till Feb 28th

Prepared By: Peter Van Kirk

Phone: 561-400-1029

Fax: 804-236-0429

Email: pvan Kirk@safewareinc.com

Sales Rep: Peter Van Kirk

Customer Project: _____

Payment Terms: Per US Communities Contract

LINE	DESCRIPTION
1	Exterior PTX SNP-6200RH-SAMSUNG
2	POLE MOUNTING KIT-SBP-300PM-SAMSUNG + custom mount and strapping kit
3	Sony SNC-HM662 360/180 HD day night vandal camera
4	POLE MOUNTING KIT-SONY HD 360 - Custom fabricated and powder coated for Hollywood
5	DTKDP4P DITEK
6	ALTRONIX individually Fused Power Supply
7	SL1301BAQB Blue signal light with NTH-12VDC800R power supply
8	ENCLOSURE PACKAGE(Includes: All necessary Mounting Brackets for Enclosure, 6 Port POE Switch, Interior Fan, 485-232 Converter, 120V DITEK Surge Protector)
9	3/4" EMT (40' PER LOCATION)
10	BUCKET TRUCK
11	CABLE PULL
12	LABOR(MOUNTING) Mounting installation for Video Surveillance system including all Boxes, terminations inti system (hours include Senior technician and helper)
13	LABOR (ENERGIZING) Energizing, Focusing, Adjustments of Video Surveillance equipment. (City Staff to be present to determine ideal camera view based on camera site)
14	PROJECT MANAGEMENT
15	MISCELLANEOUS COST-CONNECTORS, Boxes

QTY	DESCRIPTION	UNIT PRICE	EXTENDED PRICE	SAFEWARE LIST PRICE	USC DISCOUNT	YOUR DISCOUNT
Young Circle Surveillance equipment including peripherals as described						
1	Install and test YC NE camera, enclosure, and peripherals	\$17,448.00	\$17,448.00	\$45,904.40	41%	62%
1	Install and test YC NW camera, enclosure, and peripherals	\$17,448.00	\$17,448.00	\$45,904.40	41%	62%
1	Install and test YC SW camera, enclosure, and peripherals	\$17,448.00	\$17,448.00	\$45,904.40	41%	62%
1	Install and test YC SE camera, enclosure, and peripherals	\$17,448.00	\$17,448.00	\$45,904.40	41%	62%
TOTAL		\$69,792.00	\$69,792.00	\$183,617.59	41%	62%

Special Notes: US Communities Contract Information - Contract number: 4400001839
Standard freight charges for shipments within the continental US are paid. Any Hazardous material charges or expedited freight will be billed.
*Agency must be registered with US Communities at www.uscommunities.org

Authorized Signature: *Peter Van Kirk*



QUOTATION

5641 S Laburnum Ave

Phase 3, Radius North Polk to Hayes Surveillance - CCTV & LPR (ATCi #13)

Richmond VA 23231
www.safewareinc.com

Name: City of Hollywood

Attn: _____

Phone: _____

Fax: _____

Email: _____

Cust ID: _____

Freight Terms: USC PPD

Date: 1.13.15

Expiration Date: _____ Valid till Feb 28th

Prepared By: Peter Van Kirk

Phone: 561-400-1029

Fax: 804-236-0429

Email: pvankirk@safewareinc.com

Sales Rep: Peter Van Kirk

Customer Project: _____

Payment Terms: Per US Communities Contract

LINE	DESCRIPTION
1	Exterior PTX SNP-6200RH-SAMSUNG
2	POLE MOUNTING KIT-SBP-300PM-SAMSUNG + custom mount and strapping kit
3	DTKDP4P DITEK
4	ALTRONIX individually Fused Power Supply
5	SL1301BAQB Blue signal light with NTH-12VDC800R power supply
6	ENCLOSURE PACKAGE(Includes: All necessary Mounting Brackets for Enclosure, 6 Port POE Switch, Interior Fan, 485-232 Converter, 120V DITEK Surge Protector)
7	3/4" EMT (40' PER LOCATION)
8	BUCKET TRUCK
9	CABLE PULL
10	LABOR(MOUNTING) Mounting installation for Video Surveillance system including all Boxes, terminations inti system (hours include Senior technician and helper)
11	LABOR (ENERGIZING) Energizing, Focusing, Adjustments of Video Surveillance equipment. (City Staff to be present to determine ideal camera view based on camera site)
12	PROJECT MANAGEMENT
13	MISCELLANEOUS COST-CONNECTORS, Boxes

QTY	DESCRIPTION	UNIT PRICE	EXTENDED PRICE	SAFEWARE LIST PRICE	USC DISCOUNT	YOUR DISCOUNT
Radius North Polk - Hayes Surveillance equipment including peripherals						
1	Install and test Polk camera, enclosure, and peripherals	\$17,448.00	\$17,448.00	\$39,537.51	41%	56%
1	Install and test Taylor camera, enclosure, and peripherals	\$17,448.00	\$17,448.00	\$39,537.51	41%	56%
1	Install and test Pierce camera, enclosure, and peripherals	\$17,448.00	\$17,448.00	\$39,537.51	41%	56%
1	Install and test Johnson camera, enclosure, and peripherals	\$17,448.00	\$17,448.00	\$39,537.51	41%	56%
1	Install and test Hayes camera, enclosure, and peripherals	\$17,448.00	\$17,448.00	\$39,537.51	41%	56%
	TOTAL	\$87,240.00	\$87,240.00	\$197,687.54	41%	56%

Special Notes: US Communities Contract Information - Contract number: 4400001839
Standard freight charges for shipments within the continental US are paid. Any Hazardous material charges or expedited freight will be billed.
*Agency must be registered with US Communities at www.uscommunities.org

Authorized Signature: Peter Van Kirk



QUOTATION

5641 S Laburnum Ave
 Richmond VA 23231
 www.safewareinc.com

Phase 3, Roosevelt To Sheridan Surveillance - CCTV & LPR (ATCi #14)

Name: City of Hollywood
 Attn:
 Phone:
 Fax:
 Email:
 Cust ID:
 Freight Terms: USC PPD

Date: 1.13.15
 Expiration Date: Valid till Feb 28th
 Prepared By: Peter Van Kirk
 Phone: 561-400-1029
 Fax: 804-236-0429
 Email: pvan Kirk@safewareinc.com
 Sales Rep: Peter Van Kirk
 Customer Project:
 Payment Terms: Per US Communities Contract

LINE	DESCRIPTION
1	Exterior PTX SNP-6200RH-SAMSUNG
2	POLE MOUNTING KIT-SBP-300PM-SAMSUNG + custom mount and strapping kit
3	DTKDP4P DITEK
4	ALTRONIX individually Fused Power Supply
5	SL1301BAQB Blue signal light with NTH-12VDC800R power supply
6	ENCLOSURE PACKAGE(Includes: All necessary Mounting Brackets for Enclosure, 6 Port POE Switch, Interior Fan, 485-232 Converter, 120V DITEK Surge Protector)
7	3/4" EMT (40' PER LOCATION)
8	BUCKET TRUCK
9	CABLE PULL
10	LABOR(MOUNTING) Mounting installation for Video Surveillance system including all Boxes, terminations inti system (hours include Senior technician and helper)
11	LABOR (ENERGIZING) Energizing, Focusing, Adjustments of Video Surveillance equipment. (City Staff to be present to determine ideal camera view based on camera site)
12	PROJECT MANAGEMENT
13	MISCELLANEOUS COST-CONNECTORS, Boxes

QTY	DESCRIPTION	UNIT PRICE	EXTENDED PRICE	SAFWARE LIST PRICE	USC DISCOUNT	YOUR DISCOUNT
Roosevelt to Sheridan Surveillance equipment including peripherals as						
1	Install and test Roosevelt camera, enclosure, and peripherals	\$17,448.00	\$17,448.00	\$39,537.51	41%	56%
1	Install and test Taft camera, enclsoure, and peripherals	\$17,448.00	\$17,448.00	\$39,537.51	41%	56%
1	Install and test Shenandoa camera, enclosure, and peripherals	\$17,448.00	\$17,448.00	\$39,537.51	41%	56%
	TOTAL	\$52,344.00	\$52,344.00	\$118,612.52	41%	56%

Special Notes: US Communities Contract Information - Contract number: 4400001839
 Standard freight charges for shipments within the continental US are paid. Any Hazardous material charges or expedited freight will be billed.
 *Agency must be registered with US Communities at www.uscommunities.org

Authorized Signature: *Peter Van Kirk*



QUOTATION

5641 S Laburnum Ave

Richmond VA 23231

www.safewareinc.com

Phase 3, ALRP Young Circle - CCTV & LPR (ATCi #15)

Name: City of Hollywood
 Attn:
 Phone:
 Fax:
 Email:
 Cust ID:
 Freight Terms: USC PPD

Date: 1.13.15
 Expiration Date: Valid til Feb 28th
 Prepared By: Peter Van Kirk
 Phone: 561-400-1029
 Fax: 804-236-0429
 Email: pvan Kirk@safewareinc.com
 Sales Rep: Peter Van Kirk
 Customer Project:
 Payment Terms: Per US Communities Contract

LINE	DESCRIPTION
1	VMS NEMA ENCLOSURE PACKAGE (Includes: All necessary Mounting Brackets)
2	VIGILANT Car Detector Fixed Camera LPR System - Camera System-LPR SYS-1 model #VSFHXXXW-DL
3	VIGILANT LPR Basic Service Package - VSBSCSVC-04
4	VIGILANT LPR Standard Service Package - VSPK1SVC-04
5	VIGILANT System Start Up and Comissioning - SSUPSYS-COM
6	VIGILANT END USER TRAINING FOR LPR SYSTEM-VSPTRNG
7	VIGILANT SHIPPING AND HANDLING -VS-SHP-02
8	Underground, wet location, Cable
9	ONSSI Vigilant per camera integration and server application C2P
10	LABOR (MOUNTING): Mounting installation for Vigilant ALPR sysetm at Pole Location including all Boxes, terminations, connections into system, Aiming, programming, tag optimization

QTY	DESCRIPTION	UNIT PRICE	EXTENDED PRICE	SAFEWARE LIST PRICE	USC DISCOUNT	YOUR DISCOUNT
ALPR Young Circle						
1	Install and test YC NE 2 LPR camera, enclosure, and peripherals	\$25,212.27	\$25,212.27	\$52,750.42	41%	52%
1	Install and test YC NW 2 LPR camera, enclosure, and peripherals	\$25,212.27	\$25,212.27	\$52,525.56	41%	52%
1	Install and test YC SW 2 LPR camera, enclosure, and peripherals	\$25,212.27	\$25,212.27	\$52,525.56	41%	52%
1	Install and test YC SW 2 LPR camera, enclosure, and peripherals	\$25,212.27	\$25,212.27	\$52,525.56	41%	52%
TOTAL		\$100,849.08	\$100,849.08	\$210,327.11	41%	52%

Special Notes: US Communities Contract Information - Contract number: 4400001839
 Standard freight charges for shipments within the continental US are paid. Any Hazardous material charges or expedited freight will be billed.
 *Agency must be registered with US Communities at www.uscommunities.org

Authorized Signature: *Peter Van Kirk*



QUOTATION

5641 S Laburnum Ave

Phase 3, FS 105 - CCTV & LPR (ATCi #16)

Richmond VA 23231

www.safewareinc.com

Name: City of Hollywood

Attn: _____

Phone: _____

Fax: _____

Email: _____

Cust ID: _____

Date: 1.13.15

Expiration Date: _____ Valid till Feb 28th

Prepared By: Peter Van Kirk

Phone: 561-400-1029

Fax: 804-236-0429

Email: pvankirk@safewareinc.com

Sales Rep: Peter Van Kirk

Customer Project: _____

Freight Terms: USC PPD

Payment Terms: Per US Communities Contract

LINE	DESCRIPTION
1	VMS NEMA ENCLOSURE PACKAGE (Includes: All necessary Mounting Brackets)
2	VIGILANT Car Detector Fixed Camera LPR System - Camera System-LPR SYS-1 model #VSFHXXXW-DL
3	VIGILANT LPR Basic Service Package - VSBSCSVC-04
4	VIGILANT LPR Standard Service Package - VSPK1SVC-04
5	VIGILANT System Start Up and Commissioning - SSUPSYS-COM
6	VIGILANT END USER TRAINING FOR LPR SYSTEM-VSPTRNG
7	VIGILANT SHIPPING AND HANDLING -VS-SHP-02
8	Underground, wet location, Cable
9	ONSSI Vigilant per camera integration and server application C2P
10	LABOR (MOUNTING): Mounting installation for Vigilant ALPR system at Pole Location including all Boxes, terminations, connections into system, Aiming, programming, tag optimization

QTY	DESCRIPTION	UNIT PRICE	EXTENDED PRICE	SAFEWARE LIST PRICE	USC DISCOUNT	YOUR DISCOUNT
	ALPR FS 105					
1	East 2 LPR, Enclosure, and Peripherals (covering North bound lanes)	\$25,212.27	\$25,212.27	\$79,158.62	41%	68%
1	West 2 LPR, Enclosure, and Peripherals (covering South bound lanes)	\$25,212.27	\$25,212.27	\$79,158.62	41%	68%
	TOTAL	\$50,424.54	\$50,424.54	\$158,317.23	41%	68%

Special Notes: US Communities Contract Information - Contract number: 4400001839
 Standard freight charges for shipments within the continental US are paid. Any Hazardous material charges or expedited freight will be billed.
 *Agency must be registered with US Communities at www.uscommunities.org

Authorized Signature: *Peter Van Kirk*



QUOTATION

5641 S Laburnum Ave
 Richmond VA 23231
 www.safewareinc.com

Phase 3, ALRP Sheridan/N Fed Hwy - CCTV & LPR (ATCi #17)

Name: City of Hollywood
 Attn:
 Phone:
 Fax:
 Email:
 Cust ID:
 Freight Terms: USC PPD

Date: 1.13.15
 Expiration Date: Valid till Feb 28th
 Prepared By: Peter Van Kirk
 Phone: 561-400-1029
 Fax: 804-236-0429
 Email: pvan Kirk@safewareinc.com
 Sales Rep: Peter Van Kirk
 Customer Project:
 Payment Terms: Per US Communities Contract

LINE	DESCRIPTION
1	NEMA ENCLOSURE PACKAGE (Includes: All necessary Mounting Brackets)
2	VIGILANT Car Detector Fixed Camera LPR System - Camera System-LPR SYS-1 model #VSFHXXXW-DL
3	VIGILANT LPR Basic Service Package - VSBSCSVC-04
4	VIGILANT LPR Standard Service Package - VSPK1SVC-04
5	VIGILANT System Start Up and Commissioning - SSUPSYS-COM
6	VIGILANT END USER TRAINING FOR LPR SYSTEM-VSPTRNG
7	VIGILANT SHIPPING AND HANDLING - VS-SHP-02
8	Underground, wet location, Cable
9	ONSSI Vigilant per camera integration and server application C2P
10	LABOR (MOUNTING): Mounting installation for Vigilant ALRP system at Pole Location including all Boxes, terminations, connections into system, Aiming, programming, tag optimization views

QTY	DESCRIPTION	UNIT PRICE	EXTENDED PRICE	SAFWARE LIST PRICE	USC DISCOUNT	YOUR DISCOUNT
	ALPR Sheridan					
1	East 2 LPR, Enclosure, and Peripherals (covering North bound lanes)	\$25,212.27	\$25,212.27	\$79,158.62	41%	68%
1	West 2 LPR, Enclosure, and Peripherals (covering South bound lanes)	\$25,212.27	\$25,212.27	\$79,158.62	41%	68%
	TOTAL	\$50,424.54	\$50,424.54	\$158,317.23	41%	68%

Special Notes: US Communities Contract Information - Contract number: 4400001839
 Standard freight charges for shipments within the continental US are paid. Any Hazardous material charges or expedited freight will be billed.
 *Agency must be registered with US Communities at www.uscommunities.org

Authorized Signature: *Peter Van Kirk*



QUOTATION

5641 S Laburnum Ave
 Richmond VA 23231
 www.safewareinc.com

Phase 3- Fire Station 105/Rodman to Fletcher-Wireless (ACC #8)

Name: City of Hollywood
 Attn: _____
 Phone: _____
 Fax: _____
 Email: _____
 Cust ID: _____
 Freight Terms: USC PPD

Date: 1.13.15
 Expiration Date: _____ Valid till Feb 28th
 Prepared By: Peter Van Kirk
 Phone: 561-400-1029
 Fax: 804-236-0429
 Email: pvankirk@safewareinc.com
 Sales Rep: Peter Van Kirk
 Customer RFQ: City of Hollywood, Phase 3, Fire Station 105 to Rodman
 Payment Terms: Per US Communities Contract

LINE	QTY	DESCRIPTION	UNIT PRICE	EXTENDED PRICE	SAFWARE LIST PRICE	USC DISCOUNT	YOUR DISCOUNT
PHASE 3							
FIRE STATION 105 TO RODMAN							
1	1	Unlicensed PTP 5.8	\$ 3,532.40	\$ 3,532.40	\$ 11,657.87	41%	70%
2	1	Unlicensed PMP BS	\$ 5,404.63	\$ 5,404.63	\$ 10,998.45	41%	51%
3	2	LCOM Enclosure	\$ 255.68	\$ 511.36	\$ 516.74	41%	51%
4	1	Cabling and gear	\$ 704.55	\$ 704.55	\$ 1,534.70	41%	54%
5	1	Non Penetrating Skid	\$ 801.14	\$ 801.14	\$ 2,101.98	41%	62%
6	1	Garretcom 6kl 4p switch Managed w/ fiber SFP	\$ 794.32	\$ 794.32	\$ 1,976.48	41%	60%
7	4	Crew Labor	\$ 681.82	\$ 2,727.27	\$ 1,499.30	41%	55%
8	8	Provisioning	\$ 92.05	\$ 736.36	\$ 348.25	41%	74%
9	8	Project Management	\$ 170.45	\$ 1,363.64	\$ 534.14	41%	68%
10	12	Construction Management	\$ 147.73	\$ 1,772.73	\$ 410.74	41%	64%
11	1	PTZ 23 - Unlicensed PMP SU - Service	\$ 578.00	\$ 578.00	\$ 1,432.36	41%	60%
12	1	PTZ 23 - Unlicensed PMP SU - Equipment	\$ 1,359.65	\$ 1,359.65	\$ 6,015.38	41%	77%
13	1	PTZ 25 - Unlicensed PMP SU - Service	\$ 578.00	\$ 578.00	\$ 1,432.36	41%	60%
14	1	PTZ 25 - Unlicensed PMP SU - Equipment	\$ 1,359.65	\$ 1,359.65	\$ 6,015.38	41%	77%
15	1	PTZ 26 - Unlicensed PMP SU - Service	\$ 578.00	\$ 578.00	\$ 1,432.36	41%	60%
16	1	PTZ 26 - Unlicensed PMP SU - Equipment	\$ 1,359.65	\$ 1,359.65	\$ 6,015.38	41%	77%
PROPOSAL TOTAL				\$ 24,161.33			

Special Notes: US Communities Contract Information - Contract number: 4400001839
 Standard freight charges for shipments within the continental US are paid. Any Hazardous material charges or expedited freight will be billed.
 *Agency must be registered with US Communities at www.uscommunities.org

Authorized Signature: *Peter Van Kirk*



QUOTATION

Phase 3- Van Buren to Dewey-Wireless (ACC #9)

5641 S Laburnum Ave
Richmond VA 23231
www.safewareinc.com

Name:	City of Hollywood
Attn:	
Phone:	
Fax:	
Email:	
Cust ID:	
Freight Terms:	USC PPD

Date:	1.13.15
Expiration Date:	Valid till Feb 28th
Prepared By:	Peter Van Kirk
Phone:	561-400-1029
Fax:	804-236-0429
Email:	pvankirk@safewareinc.com
Sales Rep:	Peter Van Kirk
Customer RFQ:	City of Hollywood, Phase 3, Federal Hwy South VanBuren to Dewey
Payment Terms:	Per US Communities Contract

LINE	QTY	DESCRIPTION	UNIT PRICE	EXTENDED PRICE	SAFWARE LIST PRICE	USC DISCOUNT	YOUR DISCOUNT
PHASE 3							
FEDERAL HWY SOUTH VANBUREN TO DEWEY							
1	2	Unlicensed PTP 5.8	\$ 3,532.40	\$ 7,064.80	\$ 11,657.87	41%	70%
2	1	Unlicensed PMP BS	\$ 5,404.63	\$ 5,404.63	\$ 10,998.45	41%	51%
3	2	LCOM Enclosure	\$ 255.68	\$ 511.36	\$ 516.74	41%	51%
4	1	Cabling and gear	\$ 704.55	\$ 704.55	\$ 1,534.70	41%	54%
5	1	Non Penetrating Skid	\$ 801.14	\$ 801.14	\$ 2,101.98	41%	62%
6	1	Garretcom 6kl 4p switch Managed w/ fiber SFP	\$ 794.32	\$ 794.32	\$ 1,976.48	41%	60%
7	4	Crew Labor	\$ 681.82	\$ 2,727.27	\$ 1,499.30	41%	55%
8	8	Provisioning	\$ 92.05	\$ 736.36	\$ 348.25	41%	74%
9	8	Project Management	\$ 170.45	\$ 1,363.64	\$ 534.14	41%	68%
10	12	Construction Management	\$ 147.73	\$ 1,772.73	\$ 410.74	41%	64%
11	1	PTZ 17 - Unlicensed PMP SU - Service	\$ 578.00	\$ 578.00	\$ 1,432.36	41%	60%
12	1	PTZ 17 - Unlicensed PMP SU - Equipment	\$ 1,359.65	\$ 1,359.65	\$ 6,015.38	41%	77%
13	1	PTZ 18 - Unlicensed PMP SU - Service	\$ 578.00	\$ 578.00	\$ 1,432.36	41%	60%
14	1	PTZ 18 - Unlicensed PMP SU - Equipment	\$ 1,359.65	\$ 1,359.65	\$ 6,015.38	41%	77%
15	1	PTZ 21 - Unlicensed PMP SU - Service	\$ 578.00	\$ 578.00	\$ 1,432.36	41%	60%
16	1	PTZ 21 - Unlicensed PMP SU - Equipment	\$ 1,359.65	\$ 1,359.65	\$ 6,015.38	41%	77%
PROPOSAL TOTAL				\$ 27,693.73			

Special Notes: US Communities Contract Information - Contract number: 4400001839
Standard freight charges for shipments within the continental US are paid. Any Hazardous material charges or expedited freight will be billed.
*Agency must be registered with US Communities at www.uscommunities.org

Authorized Signature: *Peter Van Kirk*



QUOTATION

Phase 3-Young Circle-Wireless (ACC #10)

5641 S Laburnum Ave
Richmond VA 23231
www.safewareinc.com

Name:	City of Hollywood
Attn:	
Phone:	
Fax:	
Email:	
Cust ID:	
Freight Terms:	USC PPD

Date:	1.13.15
Expiration Date:	Valid till Feb 28th
Prepared By:	Peter Van Kirk
Phone:	561-400-1029
Fax:	804-236-0429
Email:	pvankirk@safewareinc.com
Sales Rep:	Peter Van Kirk
Customer RFQ:	City of Hollywood, Phase 3, Young Circle
Payment Terms:	Per US Communities Contract

LINE	QTY	DESCRIPTION	UNIT PRICE	EXTENDED PRICE	SAFWARE LIST PRICE	USC DISCOUNT	YOUR DISCOUNT
PHASE 3							
YOUNG CIRCLE							
1	1	Unlicensed PTP 5.8	\$ 3,532.40	\$ 3,532.40	\$ 11,657.87	41%	70%
2	1	Unlicensed PMP BS	\$ 5,404.63	\$ 5,404.63	\$ 10,998.45	41%	51%
3	2	LCOM Enclosure	\$ 255.68	\$ 511.36	\$ 516.74	41%	51%
4	1	Cabling and gear	\$ 704.55	\$ 704.55	\$ 1,534.70	41%	54%
5	1	Non Penetrating Skid	\$ 801.14	\$ 801.14	\$ 1,534.70	41%	48%
6	1	Garretcom 6kl 4p switch Managed w/ fiber SFP	\$ 794.32	\$ 794.32	\$ 1,976.48	41%	60%
7	6	Crew Labor	\$ 681.82	\$ 4,090.91	\$ 1,499.30	41%	55%
8	6	Provisioning	\$ 92.05	\$ 552.27	\$ 348.25	41%	74%
9	7	Project Management	\$ 170.45	\$ 1,193.18	\$ 534.14	41%	68%
10	12	Construction Management	\$ 147.73	\$ 1,772.73	\$ 410.74	41%	64%
11	1	PTZ 13 - Unlicensed PMP SU - Service	\$ 578.00	\$ 578.00	\$ 1,432.36	41%	60%
12	1	PTZ 13 - Unlicensed PMP SU - Equipment	\$ 1,359.65	\$ 1,359.65	\$ 6,015.38	41%	77%
13	1	PTZ 14 - Unlicensed PMP SU - Service	\$ 578.00	\$ 578.00	\$ 1,432.36	41%	60%
14	1	PTZ 14 - Unlicensed PMP SU - Equipment	\$ 1,359.65	\$ 1,359.65	\$ 6,015.38	41%	77%
15	1	PTZ15 - Unlicensed PMP SU - Service	\$ 578.00	\$ 578.00	\$ 1,432.36	41%	60%
16	1	PTZ15 - Unlicensed PMP SU - Equipment	\$ 1,359.65	\$ 1,359.65	\$ 6,015.38	41%	77%
17	1	PTZ16 - Unlicensed PMP SU - Service	\$ 578.00	\$ 578.00	\$ 1,432.36	41%	60%
18	1	PTZ16 - Unlicensed PMP SU - Equipment	\$ 1,359.65	\$ 1,359.65	\$ 6,015.38	41%	77%
PROPOSAL TOTAL				\$	27,108.07		

Special Notes: US Communities Contract Information - Contract number: 4400001839
Standard freight charges for shipments within the continental US are paid. Any Hazardous material charges or expedited freight will be billed.
*Agency must be registered with US Communities at www.uscommunities.org

Authorized Signature: *Peter Van Kirk*



QUOTATION

5641 S Laburnum Ave
 Richmond VA 23231
 www.safewareinc.com

Phase 3- North Federal Hwy Radius to Hayes-Wireless (ACC #11)

Name: City of Hollywood

Attn: _____

Phone: _____

Fax: _____

Email: _____

Cust ID: _____

Freight Terms: USC PPD

Date: 1.13.15

Expiration Date: _____ Valid till Feb 28th

Prepared By: Peter Van Kirk

Phone: 561-400-1029

Fax: 804-236-0429

Email: pvankirk@safewareinc.com

Sales Rep: Peter Van Kirk

Customer RFQ: City of Hollywood, Phase 3, North Federal Highway Radius to Hayes

Payment Terms: Per US Communities Contract

LINE	QTY	DESCRIPTION	UNIT PRICE	EXTENDED PRICE	SAFWARE LIST PRICE	USC DISCOUNT	YOUR DISCOUNT
PHASE 3							
NORTH FEDERAL HIGHWAY RADIUS TO HAYES							
1	1	Unlicensed PTP 5.8	\$ 3,532.40	\$ 3,532.40	\$ 11,657.87	41%	70%
2	1	Unlicensed PMP BS	\$ 5,404.63	\$ 5,404.63	\$ 10,998.45	41%	51%
3	2	LCOM Enclosure	\$ 255.68	\$ 511.36	\$ 516.74	41%	51%
4	1	Cabling and gear	\$ 704.55	\$ 704.55	\$ 1,534.70	41%	54%
5	1	Non Penetrating Skid	\$ 801.14	\$ 801.14	\$ 2,101.98	41%	62%
6	4	Crew Labor	\$ 681.82	\$ 2,727.27	\$ 1,499.30	41%	55%
7	8	Provisioning	\$ 92.05	\$ 736.36	\$ 348.25	41%	74%
8	8	Project Management	\$ 170.45	\$ 1,363.64	\$ 534.14	41%	68%
9	17	Construction Management	\$ 147.73	\$ 2,511.36	\$ 410.74	41%	64%
10	1	PTZ 12 - Unlicensed PMP SU - Service	\$ 578.00	\$ 578.00	\$ 1,432.36	41%	60%
11	1	PTZ 12 - Unlicensed PMP SU - Equipment	\$ 1,359.65	\$ 1,359.65	\$ 6,015.38	41%	77%
12	1	PTZ 11 - Unlicensed PMP SU - Service	\$ 578.00	\$ 578.00	\$ 1,432.36	41%	60%
13	1	PTZ 11 - Unlicensed PMP SU - Equipment	\$ 1,359.65	\$ 1,359.65	\$ 6,015.38	41%	77%
14	1	PTZ 10 - Unlicensed PMP SU - Service	\$ 578.00	\$ 578.00	\$ 1,432.36	41%	60%
15	1	PTZ 10 - Unlicensed PMP SU - Equipment	\$ 1,359.65	\$ 1,359.65	\$ 6,015.38	41%	77%
16	1	PTZ 9 - Unlicensed PMP SU - Service	\$ 578.00	\$ 578.00	\$ 1,432.36	41%	60%
17	1	PTZ 9 - Unlicensed PMP SU - Equipment	\$ 1,359.65	\$ 1,359.65	\$ 6,015.38	41%	77%
18	1	PTZ 8 - Unlicensed PMP SU - Service	\$ 578.00	\$ 578.00	\$ 1,432.36	41%	60%
19	1	PTZ 8 - Unlicensed PMP SU - Equipment	\$ 1,359.65	\$ 1,359.65	\$ 6,015.38	41%	77%
20	1	PTZ 7 - Unlicensed PMP SU - Service	\$ 578.00	\$ 578.00	\$ 1,432.36	41%	60%
21	1	PTZ 7 - Unlicensed PMP SU - Equipment	\$ 1,667.60	\$ 1,667.60	\$ 6,015.38	41%	72%
PROPOSAL TOTAL				\$	30,226.55		

Special Notes: US Communities Contract Information - Contract number: 4400001839
 Standard freight charges for shipments within the continental US are paid. Any Hazardous material charges or expedited freight will be billed.
 *Agency must be registered with US Communities at www.uscommunities.org

Authorized Signature: Peter Van Kirk



QUOTATION

5641 S Laburnum Ave
 Richmond VA 23231
 www.safewareinc.com

Phase 3-North Fed Hwy Roosevelt to Sheridan-Wireless (ACC #12)

Name: City of Hollywood
 Attn:
 Phone:
 Fax:
 Email:
 Cust ID:
 Freight Terms: USC PPD

Date: 1.13.15
 Expiration Date: Valid till Feb 28th
 Prepared By: Peter Van Kirk
 Phone: 561-400-1029
 Fax: 804-236-0429
 Email: pvankirk@safewareinc.com
 Sales Rep: Peter Van Kirk
 Customer RFQ: City of Hollywood, Phase 3, North Federal Hwy Roosevelt to Sheridan
 Payment Terms: Per US Communities Contract

LINE	QTY	DESCRIPTION	UNIT PRICE	EXTENDED PRICE	SAFWARE LIST PRICE	USC DISCOUNT	YOUR DISCOUNT
PHASE 3							
NORTH FEDERAL HWY ROOSEVELT TO SHERIDAN							
1	1	Licensed PTP	\$ 3,532.40	\$ 3,532.40	\$ 12,764.77	41%	72%
2	2	LCOM Enclosure	\$ 255.68	\$ 511.36	\$ 516.74	41%	51%
3	1	Cabling and gear	\$ 704.55	\$ 704.55	\$ 1,534.70	41%	54%
4	1	Non Penetrating Skid	\$ 801.14	\$ 801.14	\$ 2,101.98	41%	62%
5	1	Garretcom 6kl 4p switch Managed w/ fiber SFP	\$ 794.32	\$ 794.32	\$ 1,976.48	41%	60%
6	4	Crew Labor	\$ 681.82	\$ 2,727.27	\$ 1,499.30	41%	55%
7	8	Provisioning	\$ 92.05	\$ 736.36	\$ 348.25	41%	74%
8	8	Project Management	\$ 170.45	\$ 1,363.64	\$ 534.14	41%	68%
9	10	Construction Management	\$ 147.73	\$ 1,477.27	\$ 410.74	41%	64%
10	1	PTZ 6 - Service	\$ 578.00	\$ 578.00	\$ 1,432.36	41%	60%
11	1	PTZ 6 - Unlicensed PTP 5.8 - Equipment	\$ 3,532.40	\$ 3,532.40	\$ 11,657.87	41%	70%
12	1	PTZ 6 - Unlicensed PMP BS - Equipment	\$ 5,404.63	\$ 5,404.63	\$ 10,998.45	41%	51%
13	1	PTZ 5 - Unlicensed PMP SU - Service	\$ 578.00	\$ 578.00	\$ 1,432.36	41%	60%
14	1	PTZ 5 - Unlicensed PMP SU - Equipment	\$ 1,359.65	\$ 1,359.65	\$ 6,015.38	41%	77%
15	1	PTZ 2 - Unlicensed PMP SU - Service	\$ 578.00	\$ 578.00	\$ 1,432.36	41%	60%
16	1	PTZ 2 - Unlicensed PMP SU - Equipment	\$ 1,359.65	\$ 1,359.65	\$ 6,015.38	41%	77%
17	1	PTZ 1 - Unlicensed PMP SU - Service	\$ 578.00	\$ 578.00	\$ 1,432.36	41%	60%
18	1	PTZ 1 - Unlicensed PMP SU - Equipment	\$ 1,359.65	\$ 1,359.65	\$ 6,015.38	41%	77%
PROPOSAL TOTAL				\$	27,976.27		

Special Notes: US Communities Contract Information - Contract number: 4400001839
 Standard freight charges for shipments within the continental US are paid. Any Hazardous material charges or expedited freight will be billed.
 *Agency must be registered with US Communities at www.uscommunities.org

Authorized Signature: *Peter Van Kirk*

Special Notes Page:

Special Notes:

Permitting must be accomplished prior to purchase of any equipment. If the project schedule incurs delays due to permitting the project will be paused until the Safeware Team resolves the permitting requirements. It is hereby understood the locations for the equipment/poles are tentative and are subject to change as the viability of such locations due to ownership, structural integrity issues or budgetary constraints. In the event locations are unattainable, the city shall determine whether alternative locations or equipment will be assigned or removed.

Electrical Work on each pole to be performed by Safeware Team. Constant 120V power to pole by City. City's responsibilities to bring constant 120V power to the camera location when mounting cameras on buildings or structures. The City is responsible to supply 120VAC electrical supply at Radius, PD, Van Buren, Fire Station 105 and the Water Tower within 2' of each RF enclosure. All Traffic Management will be supplied by the City. Building penetrations and data cross connects will be provided by the city to the installed roof enclosure. This is a complete security solution and is being provided at a "firm fixed price" totaling \$1,311,481 as defined in our quoted pricing. The payment schedule is per the U.S. Communities contract and the agreed upon milestone payment schedule. The project has been priced based on dispatch for the milestones outlined. All structures and facilities used for mounting, installation and power will be permitted by the Safeware Team. The City of Hollywood permit fee of \$36,354.00 will be paid internally within the city. Standard Manufacturer warranty is quoted. All Sparing of equipment is to be purchased separately. Any delays caused by lack of access, or right of way will incur additional fees. Prior to start of each Milestone the City will confirm all their responsibilities have been completed, or at City's request Safeware may complete at additional cost. All quotes are broken down into Milestone payments based on previously approved detailed pricing breakdown for Federal Highway, North Beach, Downtown. City will be responsible for rights of way, and access. All Sparing of equipment is to be purchased separately. Milestones will be invoiced per the US Communities contract after successful completion of bandwidth test and/or video test for each link in the agreed upon milestone payment schedule. The payment schedule is per the U.S. Communities contract and the agreed upon milestone payment schedule. The project has been priced based on dispatch for the milestones outlined.

PROJECT WARRANTY

The Safeware Team will provide the City of Hollywood a one year warranty on all equipment under manufacturer guidelines. Labor provided by ATCi, all hardware, software, to be warrantied through manufacturers for one year. Exclusion of warranty will be Acts of Nature, or vandalism. Warranty period will not begin until beneficial use, acceptance and approval of the City per task.

SERVICE CALLS

Any service calls will be handled with a 72hr response time from time of incident. Any issues not covered under the manufacturer warranty will be billed at the following rates:

A bucket truck/CDL licensed operator per day \$ 589.00 daily

Senior Certified technician: \$ 89.00 per hr.

Junior Technician: \$ 69.00 per hr.

SERVICE CALLS

Any service call will be responded to within a 72hr response time from time of notification.

Any issues not covered under the manufacturer's warranty will be billed at the following rates:

A bucket truck/CDL licensed operator per day \$589.00 daily

Senior Certified technician: \$89.00 per hr.

Junior Technician: \$69.00 per hr.

Wireless Part Number Key

Unlicensed PTP 5.8

82-7558 Fibear FA2000 ODU Mimo 100BTX Integrated Antenna
82-7565-AC FA2000/FA2500 AC PoE Device GbE
82-4902 Gigabit Outdoor PoE Surge Protector, Shielded RJ45 60VDC all pairs
82-7570 Outdoor GPS-based sync unit for inter-site synchronization
82-7689 4800 Hub Site Sync Kit
94-2159 Outdoor Cat 5e 4pr. Shielded
12-2126 Cat 5e RJ45 Plug Shielded, Solid
82-9003GND Ground Cable For IDU/ODU IP10

Unlicensed PMP BS

82-7562-200 FA2500 HBS 5200 Series, Base Station Radio
Connectorized for external antenna (2x N-type), supporting multi frequency bands at 5.x GHz, factory default 5.8 GHz FCC/IC
82-6419 2.4/5.8ghz Lightning Suppr.N F-M
C40101-6 LMR-400 N-Male to N-Male, 6ft
82-3645 4.9-6.1GHz 16dBi Dual Pol 90deg. 2x N-F w/ MNT-22
82-7565-AC FA2000/FA2500 AC PoE Device GbE
82-4902 Gigabit Outdoor PoE Surge Protector, Shielded RJ45 60VDC all pairs
94-2159 Outdoor Cat 5e 4pr. Shielded
12-2126 Cat 5e RJ45 Plug Shielded, Solid
82-9003GND Ground Cable For IDU/ODU IP10

Unlicensed PMP SU

82-7562-200 FA2500 HBS 5200 Series, Base Station Radio
Connectorized for external antenna (2x N-type), supporting multi frequency bands at 5.x GHz, factory default 5.8 GHz FCC/IC
82-6419 2.4/5.8ghz Lightning Suppr.N F-M
C40101-6 LMR-400 N-Male to N-Male, 6ft
82-3645 4.9-6.1GHz 16dBi Dual Pol 90deg. 2x N-F w/ MNT-22
FA2500-HSU-50 Subscriber Unit Radio with high gain integrated antenna, supporting multi frequency bands at 5.x GHz, factory default 5.8 GHz FCC/IC
82-7565-AC FA2000/FA2500 AC PoE Device GbE
82-4902 Gigabit Outdoor PoE Surge Protector, Shielded RJ45 60VDC all pairs
94-2159 Outdoor Cat 5e 4pr. Shielded
12-2126 Cat 5e RJ45 Plug Shielded, Solid
82-9003GND Ground Cable For IDU/ODU IP10
Licensed PTP
82-9085IXH IP20C ODU 18GHz TxH 19260-19710MHz
82-9085IXL IP20C ODU 18GHz TxL 17700-18150MHz

82-9086-18 IP-20C OMT kit 18GHz
20-O-100M-FCC-49
20-PoE-GbE-ACUS
48-HSSU-10
C2MJ8-POE-A/SE
20-GSU-AC-US
TEL8393204101
101208
25-HBS-200M-FCC-5X-EX-AN
AL-L-SXM-ME
MA-WD56-DP16B
25-HSU-20M-FCC-5X
20-PoE-GbE-ACUS
C2MJ8-POE-A/SE
P-20C-F-18w-H
82-9085-GLANDx5 IP-20C Glands 5-Pack
82-9003GND Ground Cable For IDU/ODU IP10
82-9102F18 2ft Antenna 18GHz RFS RFU-C Interface
94-2159 Outdoor Cat 5e 4pr. Shielded
12-2126 Cat 5e RJ45 Plug Shielded, Solid
License processing

VSST Storage & Server technologies optimized for Video Surveillance

Vista Video Storage & Server Technologies, Inc.
 dba WSST, INC.
 6850 Shiloh Rd. E
 Alpharetta, GA 30005

Date:
 RE: City of Hollywood Servers

To whom it may concern:

VSST is providing a custom server configuration for the City of Hollywood deployment through ATCi Communications using ONSSI loaded with ONSSI software to be able to meet the following minimum system requirements below:

City and City Property, OC_CS

Camera Name/Type	# of Cameras	Video Format	Recording Resolution	Frames Per Second	Frame Size (KB)/ Bitrate (Kbps)	Hours	Recording %	Number of Days	Storage (GB)	Bandwidth Mbps	GB/day
1080p HD	51	H.264	1080p HD	20	4096	24	100%	30	67682	209	2256
Total								Total	67.7TB	209Mbps	2256

Our solution is guaranteed to perform according to the design. If for whatever reason our solution does not meet the minimum system specifications, VSST at no additional cost to the client will upgrade the units to meet those requirements .

Sincerely,



Charles Lee
 President VSST,
 INC.
 clee@vvsst.com

6850 Shiloh Road East, Suite B, Alpharetta, GA 30005 Tel: 678.910.0733 info@vvsst.com www.vvsst.com

PROJECT WARRANTY

The Safeware Team will provide the City of Hollywood a one year warranty on all equipment under manufacturer guidelines. Labor provided by ATCi, all hardware, software, to be warrantied through manufacturers for one year. Exclusion of warranty will be Acts of Nature, or vandalism. Warranty period will not begin until, completion, acceptance, and approval of the City per milestone achievement.

SERVICE CALLS

Any service call will be responded to within a 72hr response time from time of notification.
. Any issues not covered under the manufacturer warranty will be billed at the following rates:

A bucket truck/CDL licensed operator per day Cost \$589.00 daily
Senior Certified Technician \$89 per hour
Junior Technician \$69 per hour

DOWNTIME PREVENTION PLAN

The Safeware Team utilizes a General Contractor approach in assigning a team of qualified individuals in the build out process of the project. Because of our proactive business approach, we utilize technological advances that allow for downtime prevention, this downtime prevention encompasses the allocation for spare vehicles, redundancy in staff familiar with the site, allocation of a 24/7 operation in emergency situations, etc.

1. Network Management and security:

Should the city request The Safeware Team to remote access into the system, only after the rights have been granted by the city shall The Safeware Team request remote connectivity to the wireless network interface. Part of our service procedure will be to establish a proactive maintenance of the system remotely. Both the City of Hollywood and our Service desk know when there is any issue either at the field or at storage Servers: e.g. signal loss with the wireless antennas, hard drive failure, camera video signal loss, etc.

2. Project Management:

The Safeware Team will have a designated project manager to this project, we shall also assign a backup project manager to assist in all timely deployment and emergency issues.

Our project manager will be responsible to address the following requirements:

a. Developing a project plan:

Includes defining and confirming the project goals and objectives, identifying tasks and how goals will be achieved with the approval of the City of Hollywood. The Safeware Team assigned project manager will manage the implementation of the project plan, along with operating regular 'controls' to ensure that there is accurate and objective information on 'performance' relative to the plan, and the mechanisms to implement recovery actions where necessary.

b. System Acceptance Testing Plan:

Upon substantial completion of the system build-out for each phase, the Safeware Team will request a project closeout meeting with the determined Project Management staff responsible for signing the project over, at this said meeting The Safeware Team project manager will follow protocol of showcasing the video images at each zone through a drive-through of the featured locations and further showcase the camera views at one of the new control areas for the new surveillance and ALPR system at the City's FUSION CENTER. Acceptance occurs when Police Department staff can view live video at the Fusion Center at 20 FPS, view recorded video and export video to a DVD with a date and time stamp of the video

c. End user training:

The Safeware Team will as part of this project, coordinate two full day sessions which will include a detailed overview of the systems capabilities and features such as Pan Tilt Zoom camera pattern settings, Tours, presets, video playback and retrieval along with multiple other features the system is capable of. The Safeware Team will present the trained staff members with certificates of completion after the training sessions.

d. Anticipated Ave closure requirements:

Any required Ave closures will be closely coordinated with the appropriate City of Hollywood Project manager and will be coordinated based on each individual zone when deemed necessary.