

DICK LLOYD PLAT

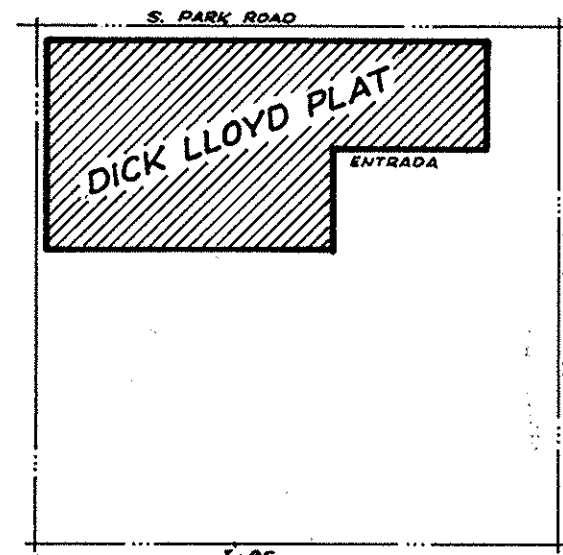
Prepared by:
CITY OF HOLLYWOOD
ENGINEERING DEPARTMENT
HOLLYWOOD, FLORIDA

A REPLAT OF A PORTION OF THE S.E. 1/4 OF SEC. 17, TWP. 51 SOUTH, RANGE 42 EAST, AND A PORTION OF "CENTRAL GOLF SECTION OF HOLLYWOOD" (9-44), HOLLYWOOD, BROWARD COUNTY, FLORIDA.

DESCRIPTION

A portion of the S.E. 1/4 of Section 17, Township 51 South, Range 42 East, Hollywood, Broward County, Florida, and a portion of "CENTRAL GOLF SECTION OF HOLLYWOOD", as recorded in Plat Book 9, Page 44, of the Public Records of Broward County, Florida, described as follows:

Commence at the N.E. corner of the S.E. 1/4 of said Section 17, Township 51 South, Range 42 East; thence N. 89°-19'-51" W. on an assumed bearing along the centerline of Hollywood Boulevard Right-of-Way, a distance of 2043.71 feet; thence S. 0°-40'-23" W. a distance of 60.00 feet to the Point of Intersection of the North line and the East line of Block 20, of said "CENTRAL GOLF SECTION OF HOLLYWOOD"; thence continue S. 0°-40'-23" W. along the East line of said Block 20, a distance of 285.00 feet to the Point of Beginning; thence N. 89°-19'-51" W. on a line 285.00 feet South of and parallel with the South Right-of-Way of said Hollywood Boulevard, a distance of 592.64 feet to the East line of Block D, "HOLLYWOOD HILLS-1968" (68-15); thence S. 0°-40'-09" W., along said East line of Block D and an extension thereof, a distance of 2315.00 feet; thence S. 89°-19'-51" E., a distance of 1100.00 feet; thence N. 0°-40'-09" E., a distance of 1514.88 feet; thence N. 89°-19'-51" W., a distance of 229.67 feet to a Point of Intersection with the South line of that 20 foot Alley lying South of and adjoining Block 24 of said "CENTRAL GOLF SECTION OF HOLLYWOOD"; thence continue N. 89°-19'-51" W. along said South line and an extension thereof, a distance of 277.74 feet; thence N. 0°-40'-23" E. along the East line of said Block 20, a distance of 800.12 feet to the Point of Beginning. Said lands containing 49.140 acres, more or less.



LOCATION MAP
S.E. 1/4 SEC. 17-51-42

BROWARD COUNTY PLANNING COUNCIL

This is to certify that the Broward County Planning Council approved this plat with regard to dedication of Rights-of-Way for trafficways by resolution, duly adopted this 23 day of APRIL, 1981

[Signature]
Chairperson

BROWARD COUNTY ENGINEERING DIVISION

This plat is approved and accepted for record.

By: *[Signature]* Date: 5-14-81
Director: Henry P. Cook
Fla. P.E. Reg. No. 12506
By: *[Signature]* Date: 5-14-81
Bruce S. Staskiewics
County Surveyor
Fla. P.L.S. Reg. No. 2942

BROWARD COUNTY CENTRAL SERVICES DEPT. ARCHIVES AND MINUTES DIVISION

This is to certify that this plat complies with the provisions of Chapter 177, Florida Statutes, and was accepted for record by the Board of County Commissioners of Broward County, Florida, this 5th day of May, 1981.

Attest: Graham Watt
County Administrator

By: *[Signature]*
Deputy

By: *[Signature]*
V-Chairperson - County Commission

BROWARD COUNTY FINANCE DEPARTMENT RECORDING DIVISION

This instrument was filed for record this 12th day of June, 1981 and recorded in Plat Book 110, at Page 8, Record Verified.

Attest: Graham Watt
County Administrator

By: *[Signature]*
Deputy

SCHOOL IMPACT FEE - ORD. 79-1

This plat is exempted from compliance with Ordinance 79-1. It is approved for non-residential use.

By: *[Signature]* Date: 5/7/81
Director of Broward County Office of Planning

SURVEYORS CERTIFICATE:

I, HARLON S. THOMPSON, hereby certify that this plat complies with all of the requirements of Chapter 177, Florida Statutes, and that it is a true and correct representation of a recent survey made under my direction.

The P.R.M.'s have been set where indicated and the P.C.P.'s will be set within one year after the recording of this plat.
All survey information shown on this plat meets the minimum requirements established by the Florida Society of Professional Land Surveyors and benchmarks are set in conformity with 3rd order accuracy.
Dated at Hollywood, Broward County, Florida, this 18th day of February, 1981.

[Signature]
HARLON S. THOMPSON
Registered Land Surveyor # 2416
State of Florida

CITY COMMISSION

This is to certify that this plat was approved and accepted by the City Commission of Hollywood, Florida, by Resolution N° R-81-46 adopted this 4th day of March, 1981, and that by said resolution all thoroughfares shown on this plat were accepted in the name of said City and all previous plats of this land are cancelled and superceded.

Approved: *[Signature]*
City Engineer

Approved: *[Signature]*
Mayor

Attest: *[Signature]*
City Clerk

DEDICATION

KNOW ALL MEN BY THESE PRESENTS: That the CITY OF HOLLYWOOD, a municipal Corporation, of the State of Florida, is the owner of the lands shown and described hereon, and has caused said lands to be platted in the manner shown hereon and to be known as "DICK LLOYD PLAT", said plat being a replat.
The easements shown are hereby dedicated to the perpetual use of the public for proper purposes.

IN WITNESS WHEREOF said City of Hollywood, has caused these presents to be signed by its Mayor, attested by its City Clerk, and its corporate seal to be affixed hereto, by and with the authority of its City Commission this 4th day of March, A.D. 1981.

Witness: *[Signature]*
As to both

CITY OF HOLLYWOOD, a municipal corporation of the State of Florida
By: *[Signature]*
Mayor

Witness: *[Signature]*
As to both

Attest: *[Signature]*
City Clerk

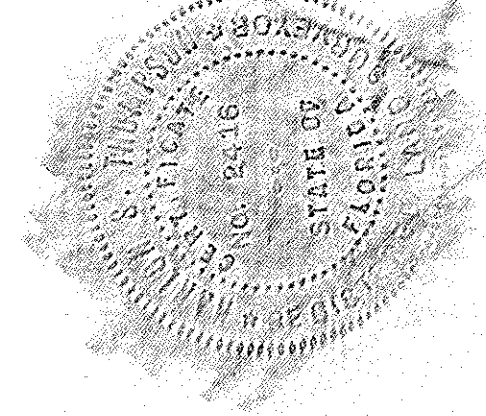
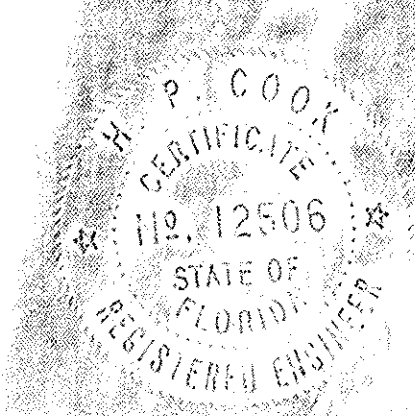
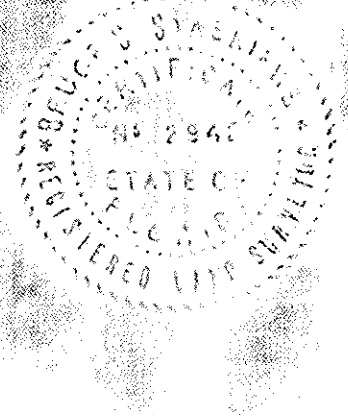
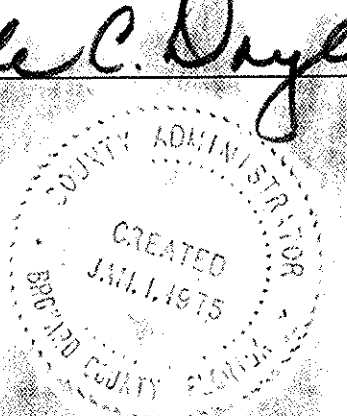
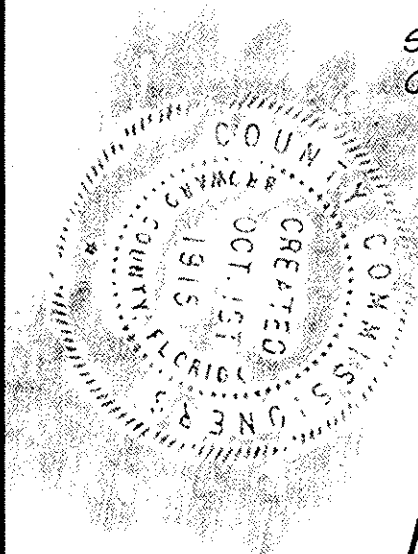
ACKNOWLEDGEMENT

STATE OF FLORIDA }
COUNTY OF BROWARD } ss. I HEREBY CERTIFY: That on this day personally appeared before me David R. Keating, Mayor, and Betty R. Derrington, City Clerk, to me well known to be the persons who executed and attested, respectively, the foregoing plat and instrument of dedication and that they executed and attested, respectively, the same freely and voluntarily for the purposes expressed herein.

Witness my signature and official seal at Hollywood, Broward County, Florida, this 9th day of March, A.D. 1981.

My Commission Expires: February 20, 1982

[Signature]
Notary Public, State of Florida

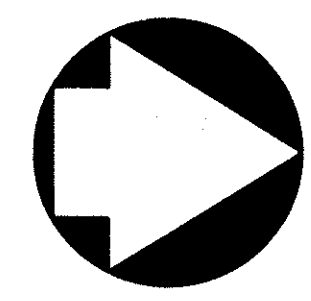
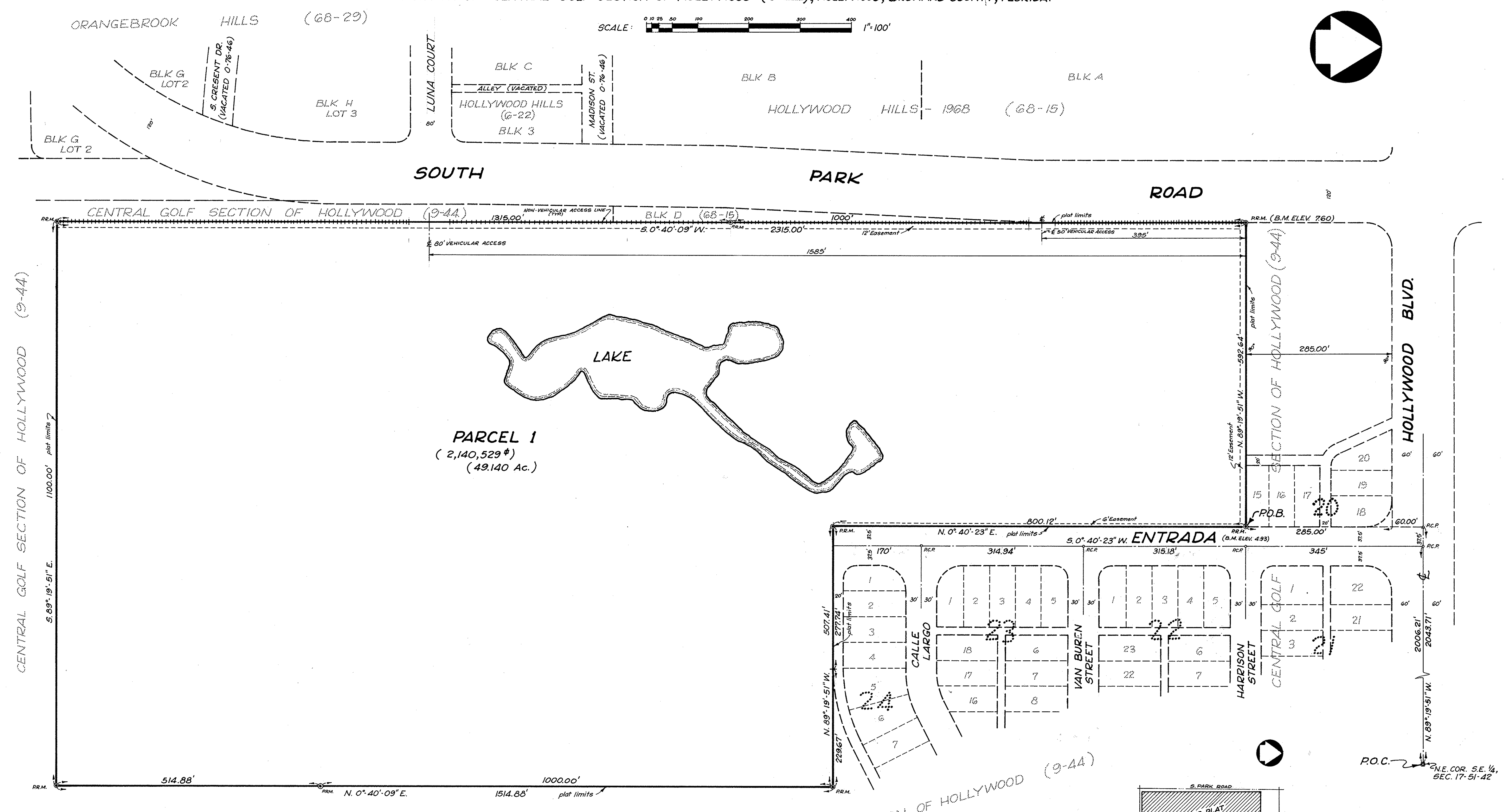


OR BK 9135 PG 602
1981 JUN 12 PM 3:33

DICK LLOYD PLAT

Prepared by:
CITY OF HOLLYWOOD
ENGINEERING DEPARTMENT
HOLLYWOOD, FLORIDA

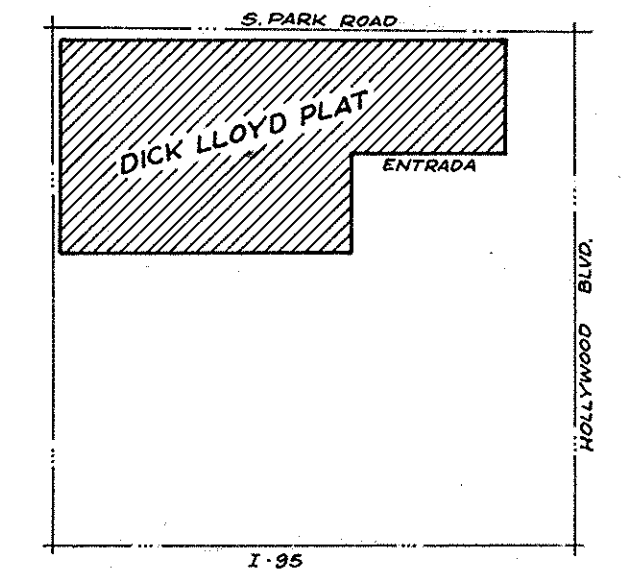
A REPLAT OF A PORTION OF THE S.E. 1/4 OF SEC. 17, TWP. 51 SOUTH, RANGE 42 EAST, AND A PORTION OF "CENTRAL GOLF SECTION OF HOLLYWOOD" (9-44), HOLLYWOOD, BROWARD COUNTY, FLORIDA.



CENTRAL GOLF SECTION OF HOLLYWOOD (9-44)

SURVEYOR'S NOTES:

- P.R.M. denotes Permanent Reference Monument.
- P.C.P. denotes Permanent Control Point.
- Bearings shown are based on an assumed meridian.
- Elevations are relative to National Geodetic Vertical Datum of 1929, and are shown thus : 8.00
- Denotes non-vehicular access



LOCATION MAP
SE 1/4 SEC. 17-51-42