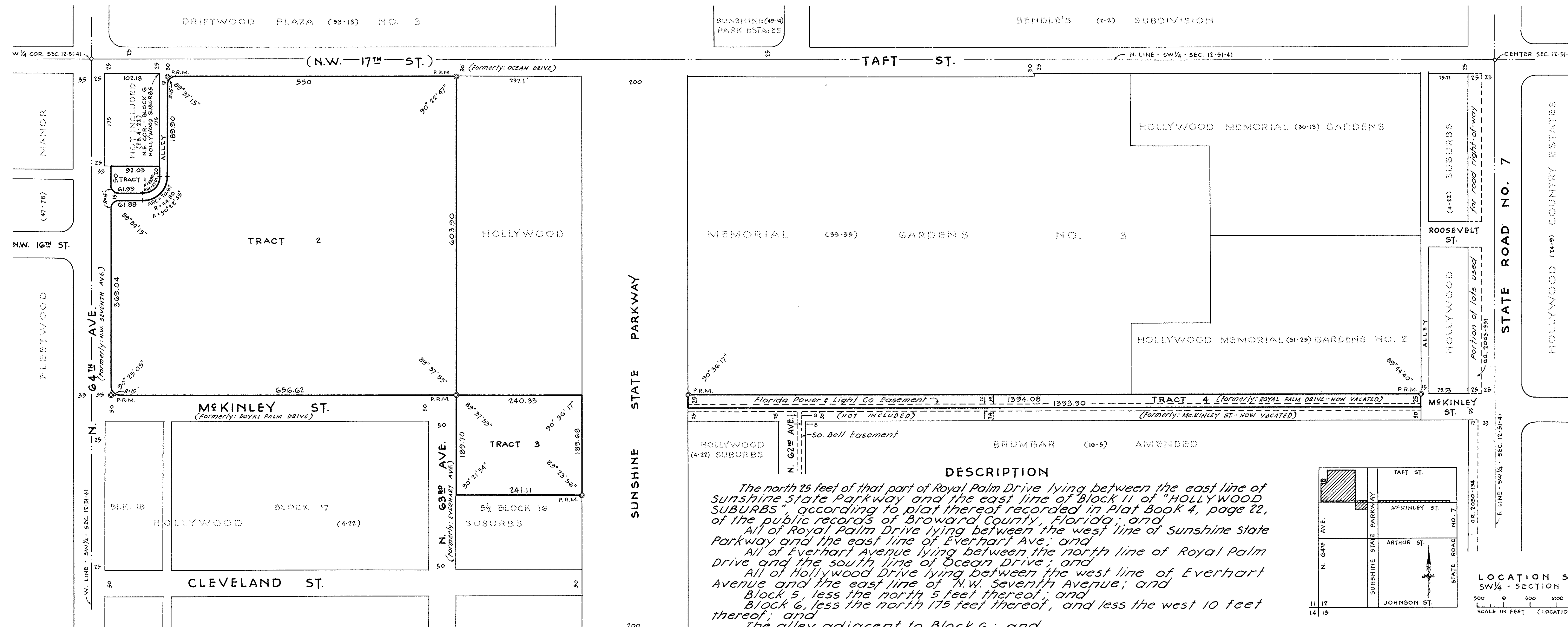


HOLLYWOOD MEMORIAL GARDENS No. 4

IN SECTION 12 - TWP. 51 S. - RGE. 41E. - BROWARD COUNTY, FLA.

M. E. BERRY & ASSOCIATES - 2613 BOULEVARD - P.O. BOX 945 - HOLLYWOOD, FLORIDA



DEDICATION

Know all men by these presents that Hollywood Memorial Gardens Cemetery, Inc., a Florida Corporation, and C. Everett Allen and Joseph W. La Croix are the owners in fee simple of the lands shown and described hereon and have caused said lands to be subdivided and platted in the manner shown hereon and to be known as "HOLLYWOOD MEMORIAL GARDENS NO. 4". All streets, alleys, and easements shown on this plat are hereby dedicated to the perpetual use of the public for proper purposes.

In Witness Whereof we hereunto set our hands and seal this 27th day of January, A.D. 1961.

HOLLYWOOD MEMORIAL GARDENS CEMETERY, INC.

JOSEPH W. LA CROIX

JOSEPH W. LA CROIX
PRESIDENTEILEEN M. ALLEN
SECRETARY

C. EVERETT ALLEN

WITNESS

WITNESS

ACKNOWLEDGMENT

STATE OF FLORIDA
COUNTY OF BROWARD

I hereby certify that on this day personally appeared before me Joseph W. LaCroix and Eileen M. Allen, president and secretary, respectively, of Hollywood Memorial Gardens Cemetery, Inc., and C. Everett Allen and Joseph W. LaCroix, the persons described in and who executed the foregoing plat and instrument of dedication and who acknowledged the execution thereof to be their free act and deed, and that said officers of said corporation affixed thereto the official seal of said corporation.

Witness my signature and official seal at Hollywood, Broward County, Florida, this 27th day of January, A.D. 1961.

S. A. BYRNE
NOTARY PUBLIC
STATE OF FLORIDAMY COMMISSION EXPIRES
NOV. 11, 1962

DESCRIPTION

The north 25 feet of that part of Royal Palm Drive lying between the east line of Sunshine State Parkway and the east line of Block 11 of "HOLLYWOOD SUBURBS", according to plat thereof recorded in Plat Book 4, page 22, of the public records of Broward County, Florida; and

All of Royal Palm Drive lying between the west line of Sunshine State Parkway and the east line of Everhart Ave.; and

All of Everhart Avenue lying between the north line of Royal Palm Drive and the south line of Ocean Drive; and

All of Hollywood Drive lying between the west line of Everhart Avenue and the east line of N.W. Seventh Avenue; and

Block 5, less the north 5 feet thereof; and

Block 6, less the north 175 feet thereof; and less the west 10 feet thereof; and

The alley adjacent to Block 6; and

Block 7, less the west 10 feet thereof; and

The alley adjacent to Block 7; and

All of Block 8; and

That portion of Lots 8, 9, 10, 11, and 12, Block 16, lying west of Sunshine State Parkway; all of the above being a part of "HOLLYWOOD SUBURBS", as recorded in Plat Book 4, page 22, of the public records of Broward County, Florida;

Excepting therefrom that part of Block 6, and the alley adjacent thereto, in said "HOLLYWOOD SUBURBS", described as follows:

Beginning at the northeast corner of said Block 6, run south along the east line of said Block 6 a distance of 195 feet to a point of curvature; thence, run southwesterly on a curve to the right with a radius of 29.80 feet and a central angle of 90° 22' 45" an arc distance of 47.01 feet to a point of tangency; thence, run westerly along a line 225 feet south of and parallel with the north line of said Block 6 a distance of 61.99 feet to a point located 10 feet east of the west line of said Block 6; thence, run southerly parallel with the west line of said Block 6 a distance of 15 feet; thence, run easterly parallel with the north line of said Block 6 a distance of 61.88 feet to a point of curvature; thence, run northeasterly along a curve to the left with a radius of 44.80 feet and a central angle of 90° 22' 45" an arc distance of 10.67 feet to a point of tangency on the east line of said alley; thence, run northerly 194.90 feet to the northwest corner of Block 5; thence, run westerly 15 feet to the point of beginning.

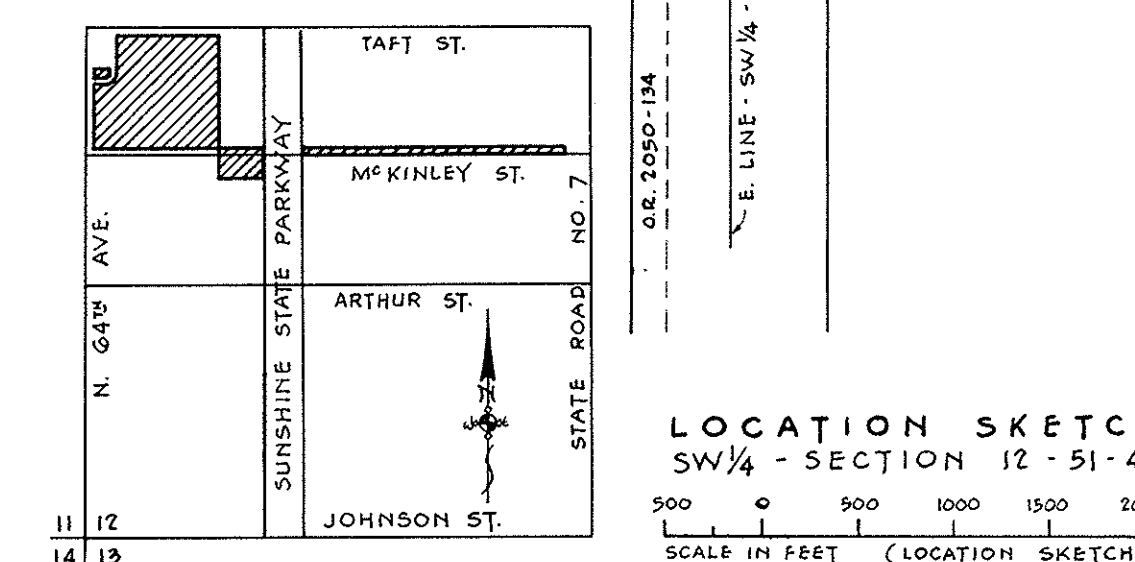
SURVEYOR'S CERTIFICATE

I hereby certify that I have made a recent survey of the above described property as indicated, that Permanent Reference Monuments (P.R.M.) were set at locations shown on this plat and that this plat is true and correct to the best of my knowledge and belief.

Dated at Hollywood, Broward County, Florida, this 6th day of January, A.D. 1961.

MAURICE E. BERRY II
REG. LAND SURVEYOR NO. 1122
STATE OF FLORIDA

SCALE IN FEET



COUNTY ZONING DEPT.

This plat was approved by the Broward County Zoning Dept.

DIRECTOR

COUNTY COMMISSION

This plat was approved and accepted for record by the Board of Commissioners of Broward County, Florida, this 9th day of February, A.D. 1961, and in accepting this plat all previous plats of said lands are hereby cancelled and superseded.

ATTEST: FRANK H. MARKS
CLERK OF CIRCUIT COURT

BY: DEPUTY CLERK

APPROVED: COUNTY ENGINEER

CIRCUIT COURT CLERK

Filed for record this 27th day of February, A.D. 1961, in Plat Book 54, page 16, of the public records of Broward County, Florida, this plat complies with the provisions of Chapter 10275 (No. 253) Laws of the State of Florida.

ATTEST: FRANK H. MARKS
CLERK OF CIRCUIT COURT

BY: DEPUTY CLERK