

BROWARD SAFETY ACTION PLAN

City of Hollywood: Commission
Presentation

James Cromar- Broward MPO PM

Christine Fanchi- WSP PM

February 5, 2025



**SAFE STREETS
4 BROWARD**

Powered by The Broward MPO & Broward County

www.safeststreets4broward.org

\$5M SAFE STREETS AND ROADS FOR ALL GRANT

**Our goal is to
prevent traffic
fatalities and
serious injuries
throughout
Broward County**



CRASH

~~ACCIDENT~~

BROWARD STATS...

- 137 Crashes Every Day
- 4 people killed every week
- 18 more seriously injured every week
- Approximately 1,000 people killed or seriously injured (KSI) every year
- 77% of KSI happening on 6% of our streets
- 2018-2022, traffic crashes cost \$22.8B to Broward

SAFETY FINDINGS...

- Approximately 200 fatalities and 775 serious injuries per year in Broward. (Approximately 13 fatal crashes per year related to rail).
- One-third of pedestrian KSI crashes happen near schools/parks!
- Pedestrian KSIs happen 42 times more on 6 lane streets vs. 2 lane streets
- 47% of KSI crashes happen at night, and 57% of those happen outside intersections

LEGEND

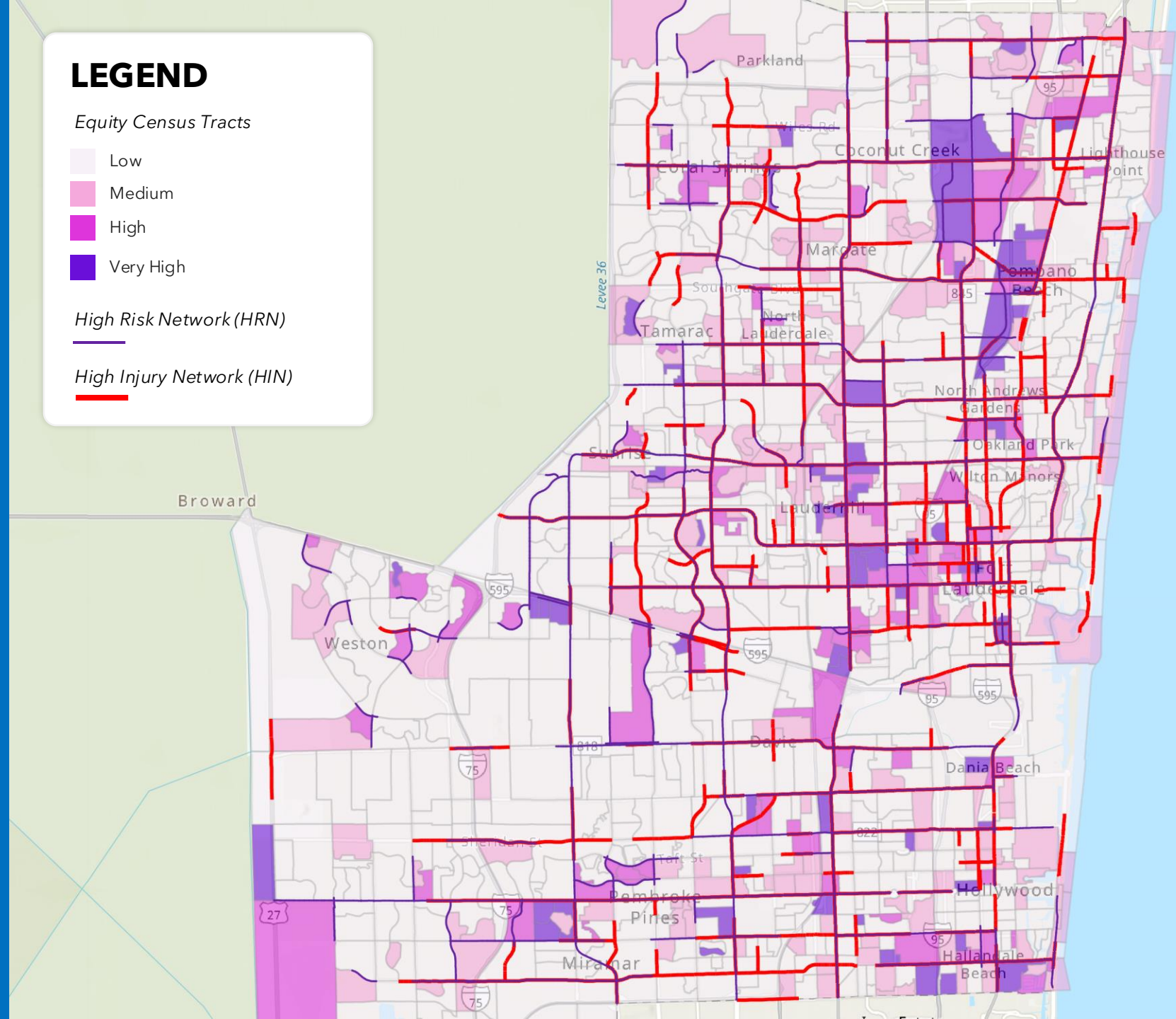
Equity Census Tracts

- Low
- Medium
- High
- Very High

High Risk Network (HRN)

High Injury Network (HIN)

DATA DRIVEN APPROACH



HOLLYWOOD FINDINGS: 2018-2022 DATA

Total
Crashes:
2ND

1. Fort Lauderdale
2. Hollywood
3. Pompano Beach
4. Pembroke Pines
5. Miramar
6. Coral Springs
7. Plantation

KSI
Crashes:
3RD

1. Fort Lauderdale
2. Plantation
3. Hollywood

Bike/Ped
Crashes:
2ND

1. Fort Lauderdale
2. Hollywood
3. Pompano Beach
4. Coral Springs
5. Pembroke Pines
6. Sunrise
7. Plantation

Bike/Ped KSI
Crashes:
3rd

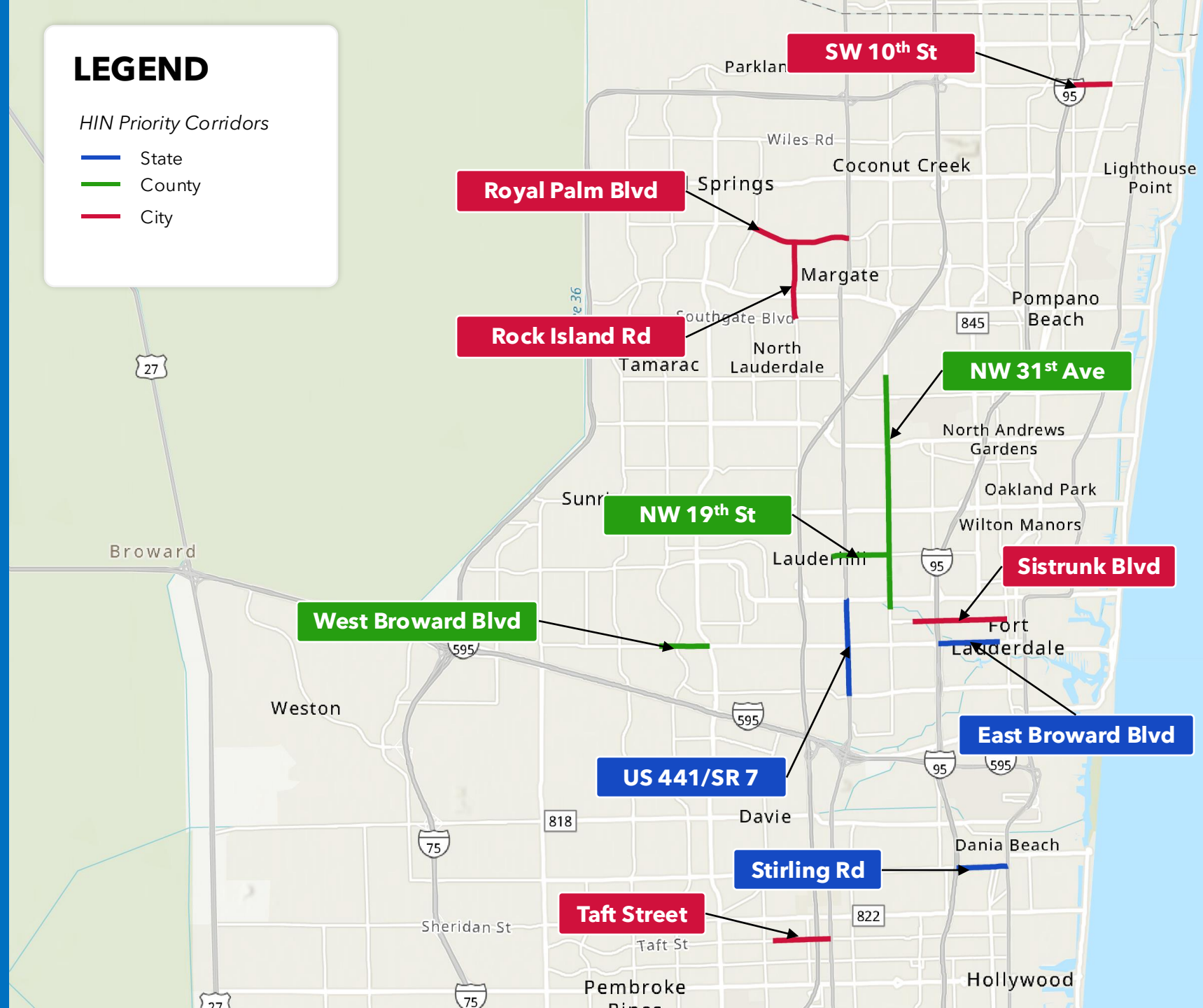
1. Fort Lauderdale
2. Pompano Beach
3. Hollywood
4. Plantation
5. Margate

11
CORRIDORS
OVER 20
TOTAL MILES

LEGEND

HIN Priority Corridors

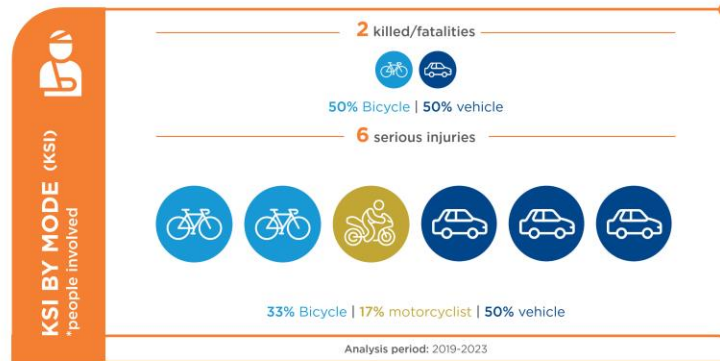
- State
- County
- City



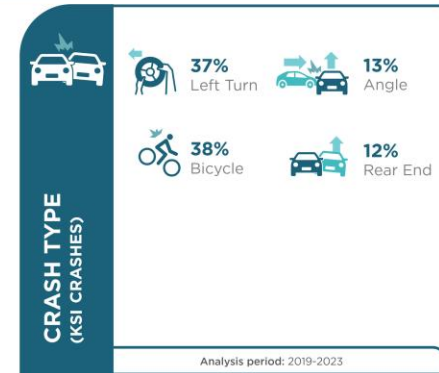
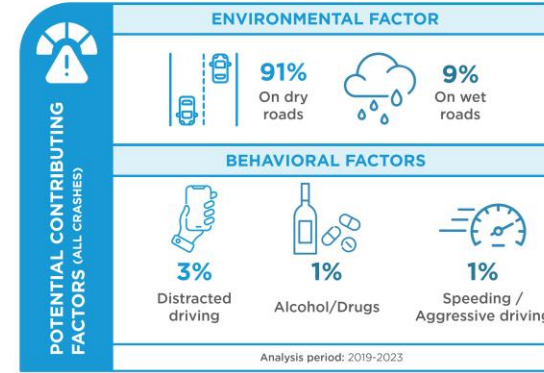
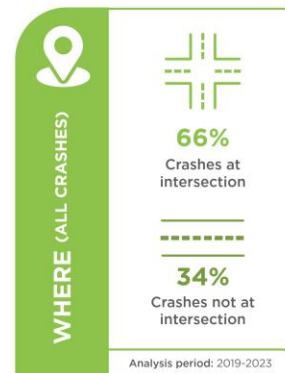
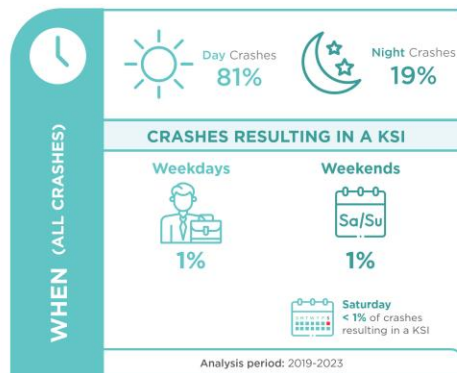
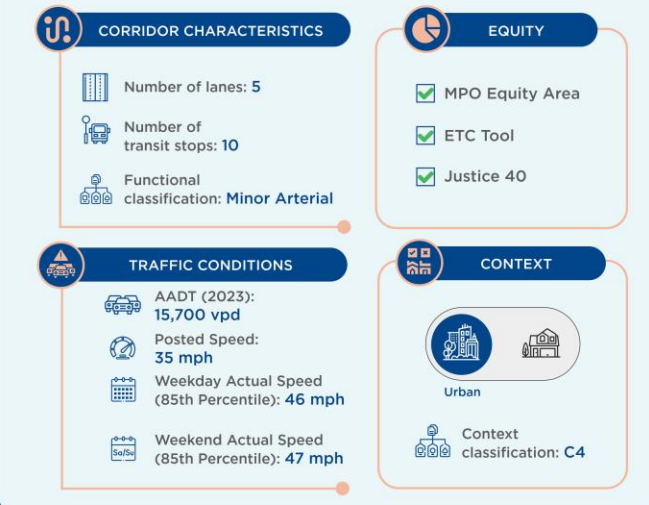


SAFETY ANALYSIS:

Taft Street: N 70th Terrace to US441/SR7



Taft Road: from N 70th Terrace to SR 7 (US 441)



* Economic costs are monetary costs associated with emergency services deployment, medical services, productivity loss due to victim injury, insurance, and legal costs, cost associated congestion impacts because of the crash, and property damage costs. Monetized pain and suffering costs are an assumption of the costs associated with lost quality-of-life (or Quality-Adjusted Life Years), accounting for reductions in life expectancy and quality of life changes because of a crash.

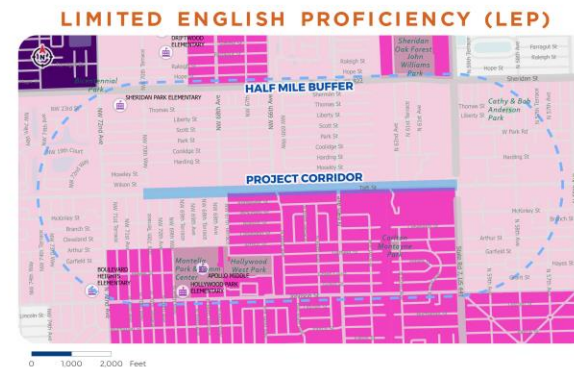
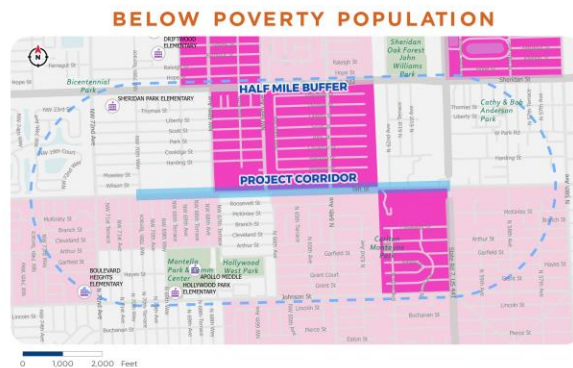
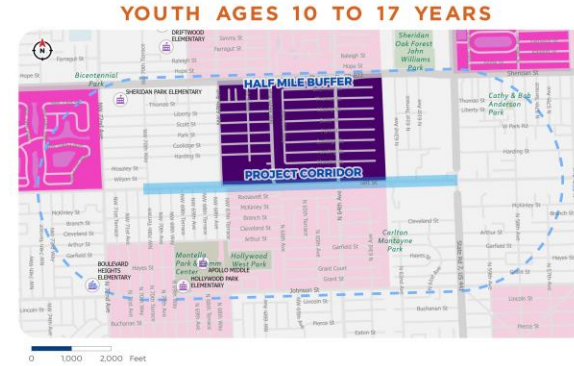
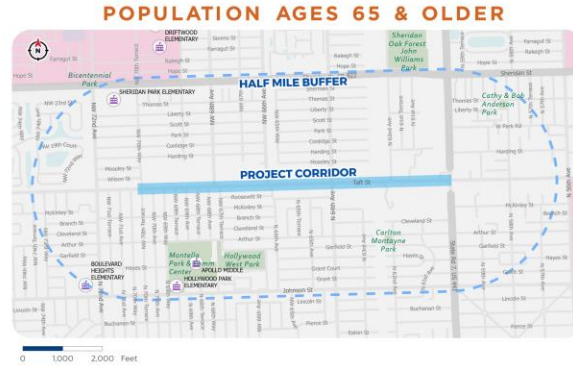
Sources: Crash data: Signal Four Analytics; Speed Data: Field Counts; Economic Data: FDOT KABCO Crash Costs; AADT: FDOT Traffic Online; Context Classification: FDOT Context Classification Map



bit.ly/Broward554A

EQUITY ANALYSIS:

Taft Street: N 70th Terrace to US441/SR7



EQUITY SCORE

- Very High
- High
- Medium
- Low

PROJECT

- Project Corridor
- Half Mile Buffer Around the Corridor

POINTS OF INTEREST

- Colleges and Universities (if any)
- Hospitals (if any)
- Public Schools (if any)

ROADWAY

- Principal Arterial
- Minor Arterial
- Major Collector
- Minor Collector
- Local

About The Maps:
The equity analysis identifies equity areas in terms of block groups with low, medium, high, and very high concentrations of populations based on the seven demographic indicators. The purpose of the equity analysis is to inform the development of recommendations addressing the needs of underserved communities, creating more equitable outcomes. Comparing a variety of indicators shows the kind and depth of needs a project corridor might have when it comes to traffic safety.

Sources: Demographic Data: US Census 2022 ACS; Context: Broward County GeoHub; BSAP Roadway Centerline Network; Council on Environmental Quality.

Read more online: BMPO Equity Assessment (bit.ly/BMPOEquity), CEJST mapping and Justice40 (bit.ly/CEJST-40)

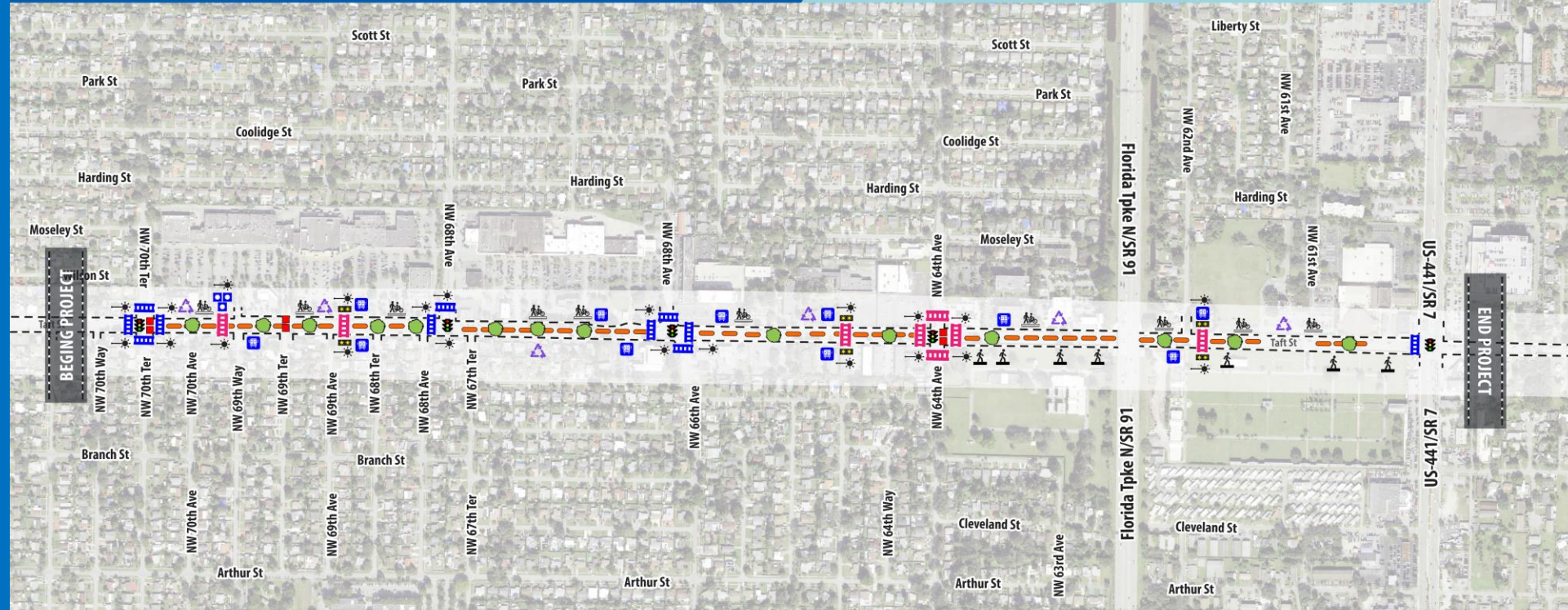
TAFT STREET

NW 70TH TERRACE TO SR 7 (US 441)



ICON MAP:

Taft Street: N
70th Terrace to
US441/SR7



DRAFT

LEGEND OF COUNTERMEASURES

- | | | | | | |
|------------------------------------|--|--|----------------------------------|-----------------------|--|
| Raised Crosswalk | Round About | No Right on Red | Speed Feedback Sign | Speed Table | Pedestrian Crossing Sign |
| School Zone Speed Camera | Upgrade Lighting to LED | Raised Intersection | Signal Timing to Reduce Speeding | Median Tips | Evaluate Turn Lane Length |
| High Visibility Crosswalk Markings | New Light Pole | Pedestrian Hybrid Beacon | Street Trees | Lane Repurposing | Delineators |
| Leading Pedestrian Interval | Green Bike Mats | Narrow Lanes | Flashing Yellow Left-turn | Relocate Bus Stop | Turning Vehicles Stop for Pedestrian Sign |
| Median/Pedestrian Refuge | Align Left Turns | In-Lane Speed Limit Markings | Extend Green Time for Bikes | Protected Bike Lane | Internally Illuminated Raised Pavement Markers |
| Signal Back Plates | Tighten Curb Returns & Add High Visibility Crosswalk | Rectangular Rapid Flashing Beacon (RRFB) | Chicane | Sidewalk | Shared Use Path |
| Protected Intersection | Speed Limit Reduction | Flashing Red Left Turn | Protected Left Turn | Dynamic Rail Envelope | Reduce Excessively Long turn lanes |

CORRIDOR WIDE IMPROVEMENTS

1. Lane Repurposing
2. Relocated Bus Stops
3. Shared Use Path
4. Speed Limit Reduction
5. Raised Crosswalks
6. High Visibility Crosswalk Markings
7. LED Lighting Upgrades
8. New Lighting Poles
9. In-Lane Speed Markings
10. Speed Feedback Signs
11. Narrow Lanes
12. Street Trees

INTERSECTION IMPROVEMENTS

1. Protected Intersection
2. Raised Intersection
3. Tighten Curb Return
4. Median Tips
5. Leading Pedestrian Interval (LPI)
6. Rectangular Rapid Flashing Beacon
7. Signal Timing to Reduce Speeding
8. Flashing Yellow Left/Right Turn
9. Protected Left Turn
10. Extend Green Time for Bikes
11. Signal Backplates
12. Green Bike Markings
13. Turning Vehicles Stop for Peds Sign
14. Restrict Right Turn on Red Sign

NEXT STEPS:

1

TAFT STREET PUBLIC MEETING

FEB 10TH @ 6PM: BOULEVARD HEIGHTS
COMMUNITY CENTER

2

BROWARD MPO BOARD TO ADOPT THE BROWARD SAFETY ACTION PLAN

APRIL 2025

3

TAFT STREET CONCEPT PACKAGE

MAY 2025

CONCEPT DESIGN, COST ESTIMATE, TRAFFIC
ANALYSIS, COST/BENEFIT ANALYSIS, AND
SUMMARY OF FINDINGS REPORT

(Future City Commission Approval prior to final design)

ADDITIONAL CITY RESOURCES:

1

www.safeststreets4broward.org

2

HIGH-INJURY NETWORK, HIGH RISK NETWORK, & EQUITY MAPPING

3

9 FOCUS PLANS: School, Neighborhood, Rail, Technology, Lighting, Mid-Block Crossing, Safe Speeds, Quick-Build, & Pedestrian/Bicycle

4

SAFE STREETS DESIGN MANUAL

1. www.SafeStreets4Broward.org

- Safety Pledge
- Point It Out Map of Safety Concerns
- Dedication

2. Follow us on social media and share:

- Speak Up Broward- Broward MPO on Facebook
- Broward Metropolitan Planning Organization on LinkedIn
- Speak Up Broward on Instagram

3. CONTACT US at SS4A@browardmpo.org



THANK YOU

Contact us at ss4a@browardmpo.org



**SAFE STREETS
4 BROWARD**

Powered by The Broward MPO & Broward County

www.safeststreets4broward.org