

EXHIBIT "2"
DESCRIPTION
NEW NON-VEHICULAR ACCESS LINE
PORT EVERGLADES INDUSTRIAL PARK SECTION ONE
PLAT BOOK 112, PAGE 43, B.C.R.
CITY OF HOLLYWOOD, BROWARD COUNTY, FLORIDA

A Non-Vehicular Access Line being a portion of Parcel A, PORT EVERGLADES INDUSTRIAL PARK SECTION ONE, according to the plat thereof, as recorded in Plat Book 112, Page 43 of the Public Records of Broward County, Florida, said Non-Vehicular Access Line being more particularly described as follows:

BEGIN at the Northwest corner of said Parcel A;

THENCE on an assumed bearing of N 88° 05' 32" E on a Non-Vehicular Access Line, along the North line of said Parcel A, a distance of 185.16 feet to the POINT OF TERMINATION of said Non-Vehicular Access Line;

THENCE continue N 88° 05' 32" E continuing along the North line of said Parcel A, a distance of 50.00 feet to the POINT OF BEGINNING of said Non-Vehicular Access Line;

THENCE continue N 88° 05' 32" E on a Non-Vehicular Access Line, continuing along the North line of said Parcel A, a distance of 150.00 feet to the POINT OF TERMINATION of said Non-Vehicular Access Line;

THENCE continue N 88° 05' 32" E continuing along the North line of said Parcel A, a distance of 50.00 feet to the POINT OF BEGINNING of said Non-Vehicular Access Line;

THENCE continue N 88° 05' 32" E on a Non-Vehicular Access Line, continuing along the North line of said Parcel A, a distance of 175.00 feet to the POINT OF TERMINATION of said Non-Vehicular Access Line;

Said Non-Vehicular Access Line lies within the City of Hollywood, Broward County, Florida.

NOTES:

1. Not valid without the signature and original embossed seal of a Florida licensed Professional Surveyor and Mapper.
2. Bearings shown hereon are assumed with the North line of Parcel A, PORT EVERGLADES INDUSTRIAL PARK SECTION ONE, Plat Book 112, Page 43, Broward County Records, having a bearing of N 88°05'32" E.
3. The description contained herein and shown on the attached sketch does not represent a field Boundary Survey.

Prepared By:
CALVIN, GIORDANO AND ASSOCIATES, INC.
1800 Eller Drive, Suite 600
Fort Lauderdale, Florida 33316
January 7, 2016

C:\Users\swatts\Documents\FPL-PortEverglades\EXHIBIT C NVAL FPI-Eller-2016.docx

CALVIN, GIORDANO AND ASSOCIATES, INC.



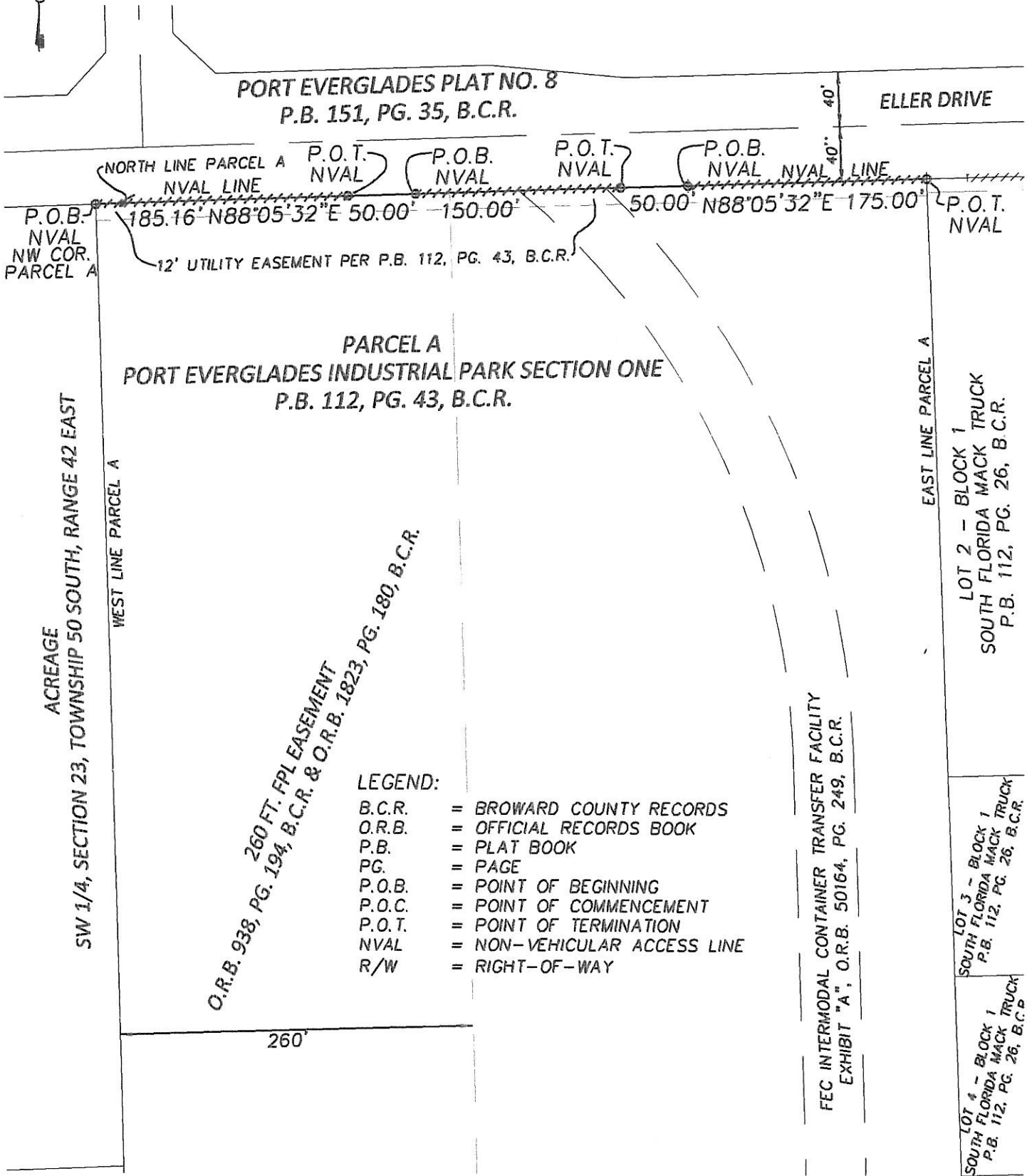
Date: 1/8/2016

Steven M. Watts
Professional Surveyor and Mapper
Florida Registration Number LS 4588

Prepared By:
CALVIN, GIORDANO AND ASSOCIATES, INC.
1800 Eller Drive, Suite 600
Fort Lauderdale, Florida 33316
January 7, 2016

C:\Users\swatts\Documents\FPL-PortEverglades\EXHIBIT C NVAL FPI-Eller-2016.docx

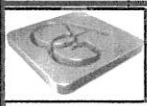
SKETCH & LEGAL DESCRIPTION
EXHIBIT "2" NEW NON-VEHICULAR ACCESS LINE
PORT EVERGLADES INDUSTRIAL PARK SECTION ONE P.B. 112, PG. 43, B.C.R.
CITY OF HOLLYWOOD, FLORIDA
FPL ELLER SUB-STATION SITE



LEGEND:

- B.C.R. = BROWARD COUNTY RECORDS
- O.R.B. = OFFICIAL RECORDS BOOK
- P.B. = PLAT BOOK
- PG. = PAGE
- P.O.B. = POINT OF BEGINNING
- P.O.C. = POINT OF COMMENCEMENT
- P.O.T. = POINT OF TERMINATION
- NVAL = NON-VEHICULAR ACCESS LINE
- R/W = RIGHT-OF-WAY

P:\Projects\2015\157986 FPL Eller Substation\Survey\SKETCH\15-7986-V-SD-FPL-Eller-Substation-NVAL-C.dwg Jan 08, 2016 - 9:21am



Calvin, Giordano & Associates, Inc.
EXCEPTIONAL SOLUTIONS™
 1800 Eller Drive, Suite 600, Fort Lauderdale, Florida 33316
 Phone: 954.921.7761 • Fax: 954.921.8807

Certificate of Authorization

FPL ELLER SUB-STATION
BROWARD COUNTY, FL

SCALE 1" = 100'	PROJECT No. 15-7736.2	SHEET 3
DATE 01-07-16	CAD FILE SEE LEFT	OF 3